

LOS MEDANOS
COLLEGE

ALL-COLLEGE MEETING: Post-Election Impact

Bob Kratochvil
President

November 7, 2012

***It takes a community to
support and nurture a
SUCCESS STORY...***

2012 Election – California

Proposition 30 – Governor’s Tax Initiative

(as of 8:03 a.m. today)

State-wide results:

YES – 4,959,206 (53.9%)

NO – 4,241,246 (46.1%)

2012 Election – California

Proposition 30 – Governor’s Tax Initiative

Contra Costa County results:

YES – 194,893 (59.46%)

NO – 132,894 (40.54%)

Proposition 30 – ***PASSED!***

Impact on Contra Costa Community College District

- **With passage of Proposition 30...**
 - ❖ **2012-13 Adopted Budget will increase by almost \$2.4M**
 - ❖ **Essentially keeps CCCCD at our base FTES and funding level from last year**

- **If Proposition 30 had failed...**
 - ❖ **About \$6.8M would have been reduced from the sites**

Proposition 30 – ***PASSED!***

Impact on Los Medanos College

- **With passage of Proposition 30...**
 - ❖ **2012-13 Adopted Budget will increase by about \$648K**
 - ❖ **Can add 41 sections to the Spring 2013 class schedule, resulting in a 4% increase from Spring 2012**

- **If Proposition 30 had failed...**
 - ❖ **About \$1.6M would have been reduced from LMC's total budget for 2012-13**

2012 Election – Contra Costa

Measure A – CCCCD Parcel Tax

(100% of precincts reporting)

YES – 199,825 (64.84%)

NO – 108,364 (35.16%)

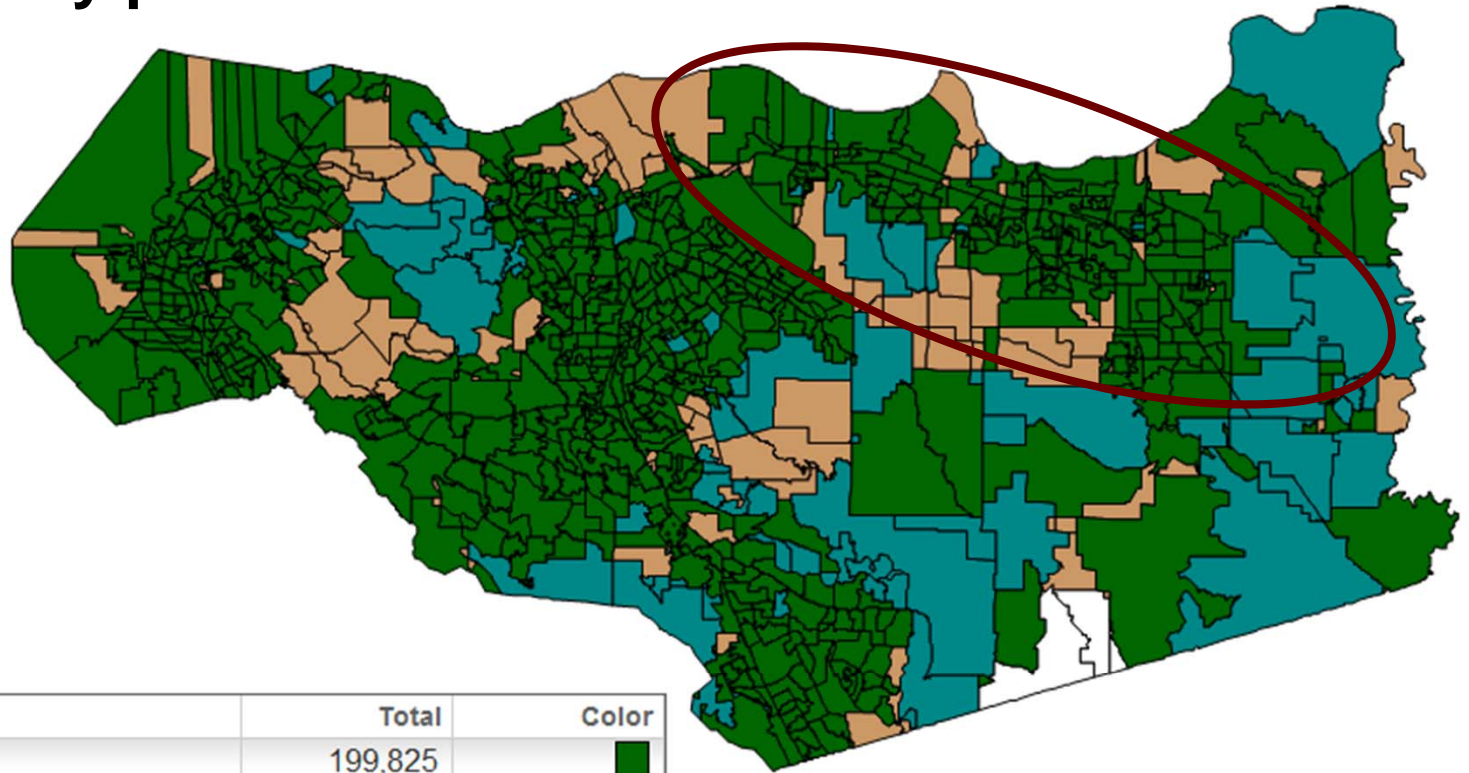
Measure A






Passage of Measure A would have meant:

- ❖ **Approximately \$3.9M generated annually for the District for 6 years, effective 2013-14**

Measure A

Voting results by precinct



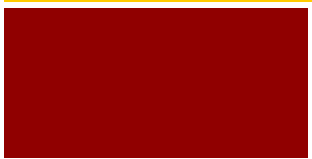
Choice	Total	Color
Yes	199,825	
No	108,364	
Tie		
Has Not Reported		
Not Participating		



***L**earning **M**atters to our **C**ommunity*

Looking Ahead: Planning for 2013-14 and Beyond

- ❖ **Grateful for passage of Proposition 30 and voter support for education**
- ❖ **Community colleges remain underfunded by the State**
- ❖ **Moving ahead, we need to be:**
 - ❖ **Fiscally prudent**
 - ❖ **Forward-thinking**
 - ❖ **Focused on effectiveness and efficiencies**



LMC Success Stories in the Making

LOS MEDANOS
COLLEGE



***Together,
we can overcome the challenges
of today and prepare for the
LMC success stories of
TOMORROW***

Charting a course...together

- ❖ **Priority on serving our diverse students**
 - ❖ **SUCCESS and COMPLETION**
- ❖ **Collectively-developed shared vision and guiding principles**
- ❖ **Focus on what's in the best interest of the institution**
- ❖ **Dialogue and engagement**
- ❖ **A managed sense of urgency – be deliberate and purposeful in our planning and decision-making**

Staying Engaged & Informed

- ❖ **College Assembly**
- ❖ **Governance committees**
- ❖ **Constituency representation**
- ❖ **Person-to-person with the President**