



Lift Up Contra Costa Demographic Analysis

September, 2019

Samir Gambhir and Eli Moore

Haas Institute for a Fair and Inclusive Society

Goals

- Comprehensive demographic analysis of Contra Costa County and local areas of interest to LUCC, creating a database, maps, and presenting key findings.
- Identify and characterize the demographics of priority areas of the county where LUCC is or could be organizing.
- Analyze civic engagement in these areas as they relate to political boundaries and power.

Methods

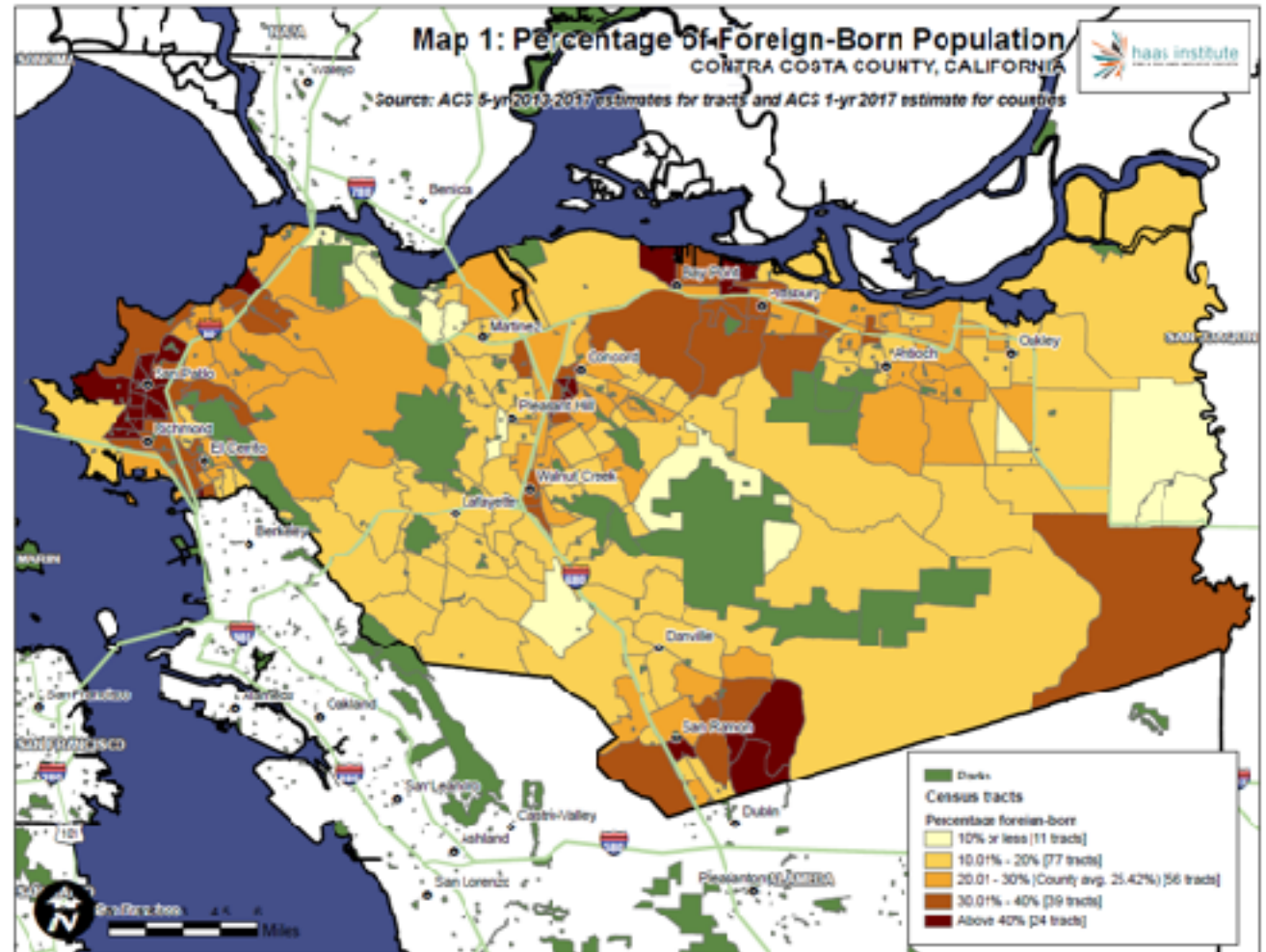
**Phase 1: Map
key communities
to identify
priority areas**

**Phase 2: Analyze
civic
engagement in
the priority
areas**

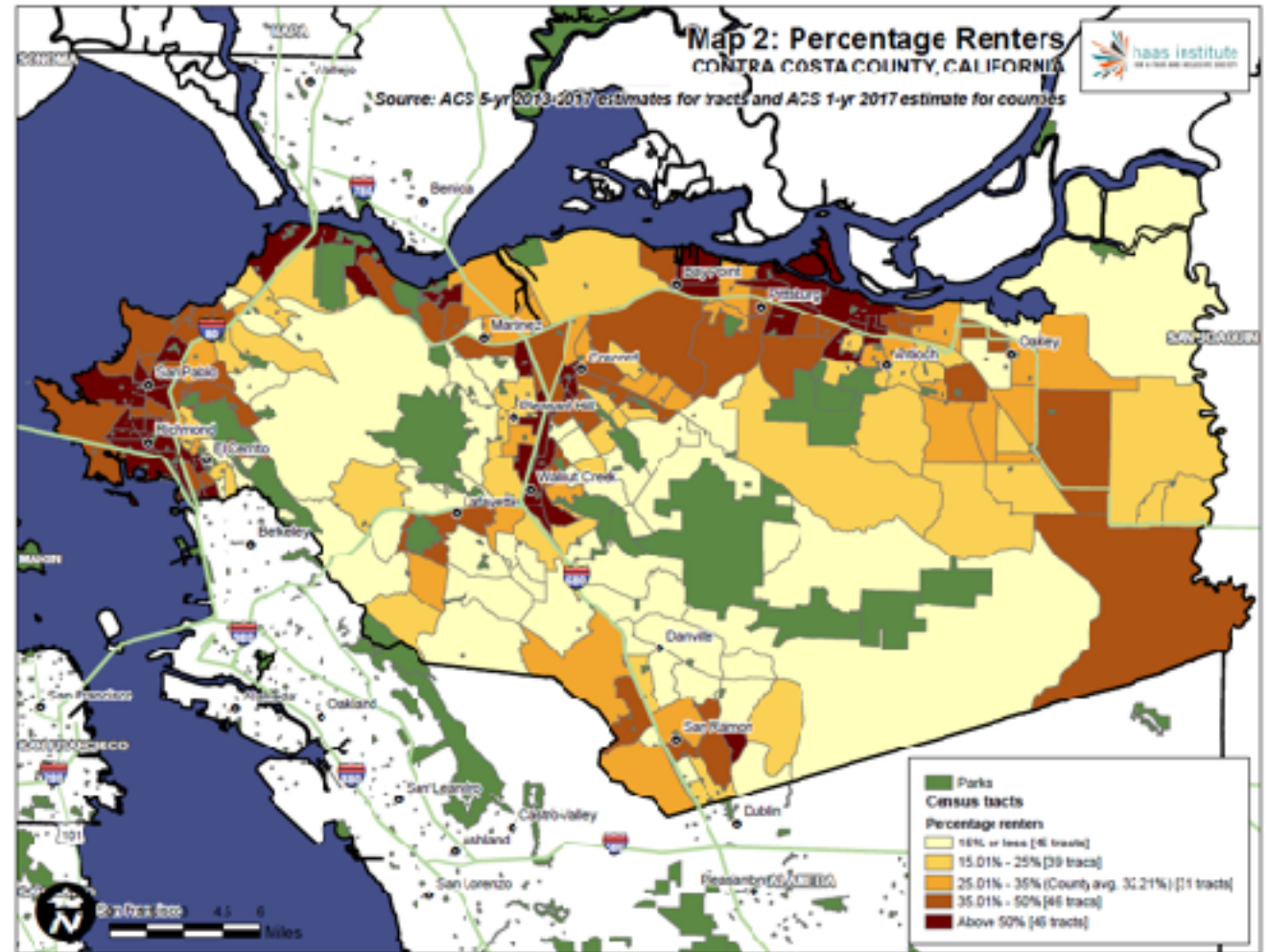
Phase 1: Mapping the LUCC “Key Communities”

- People renting their home
- African American residents
- Asian American residents
 - Filipino residents as subset of Asian Americans
- Latino residents
- Households with children
- Residents born in another country
- Low income households
- Residents without health insurance
- Residents with less than a college degree education
- People on probation

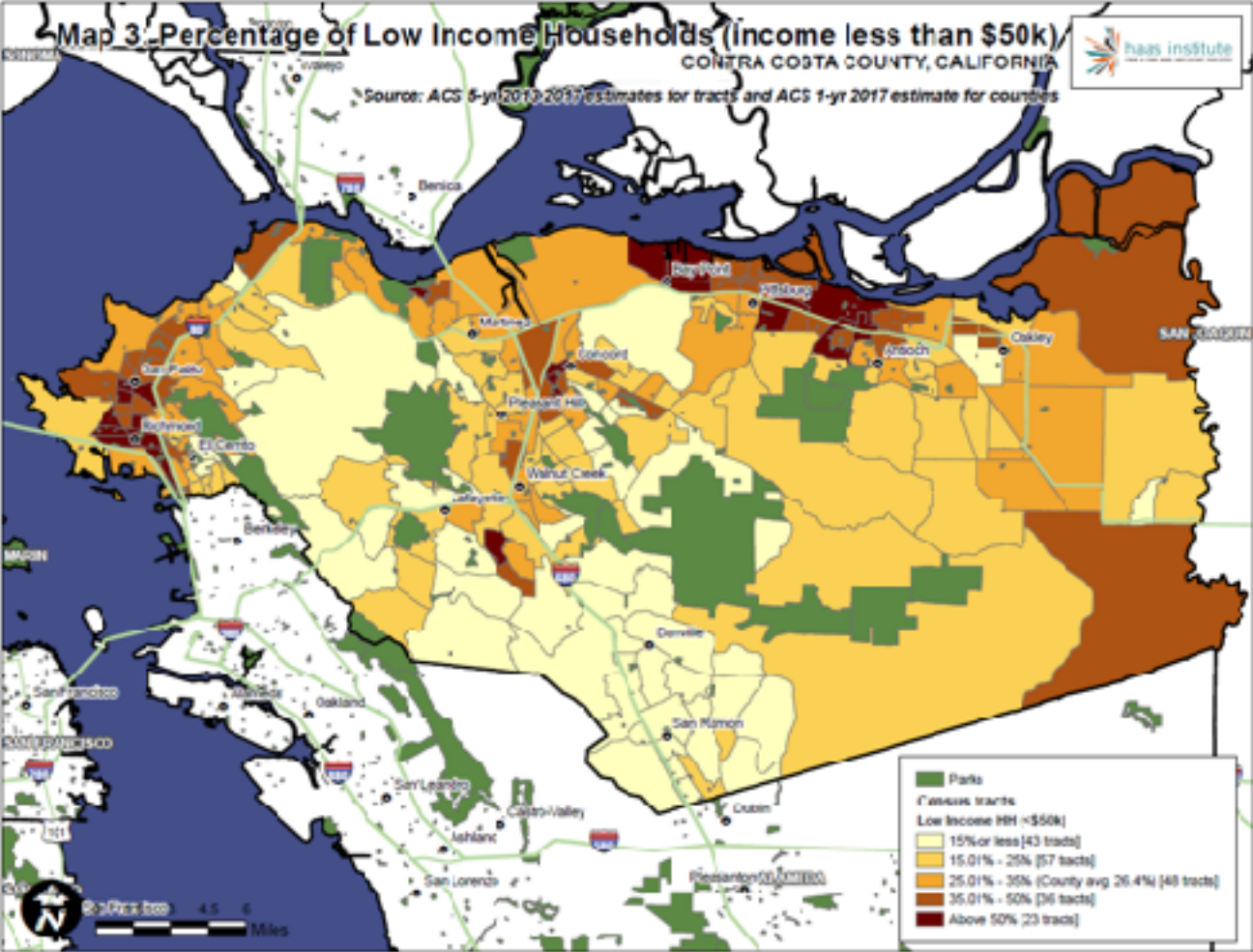
Percentage Foreign-born Population



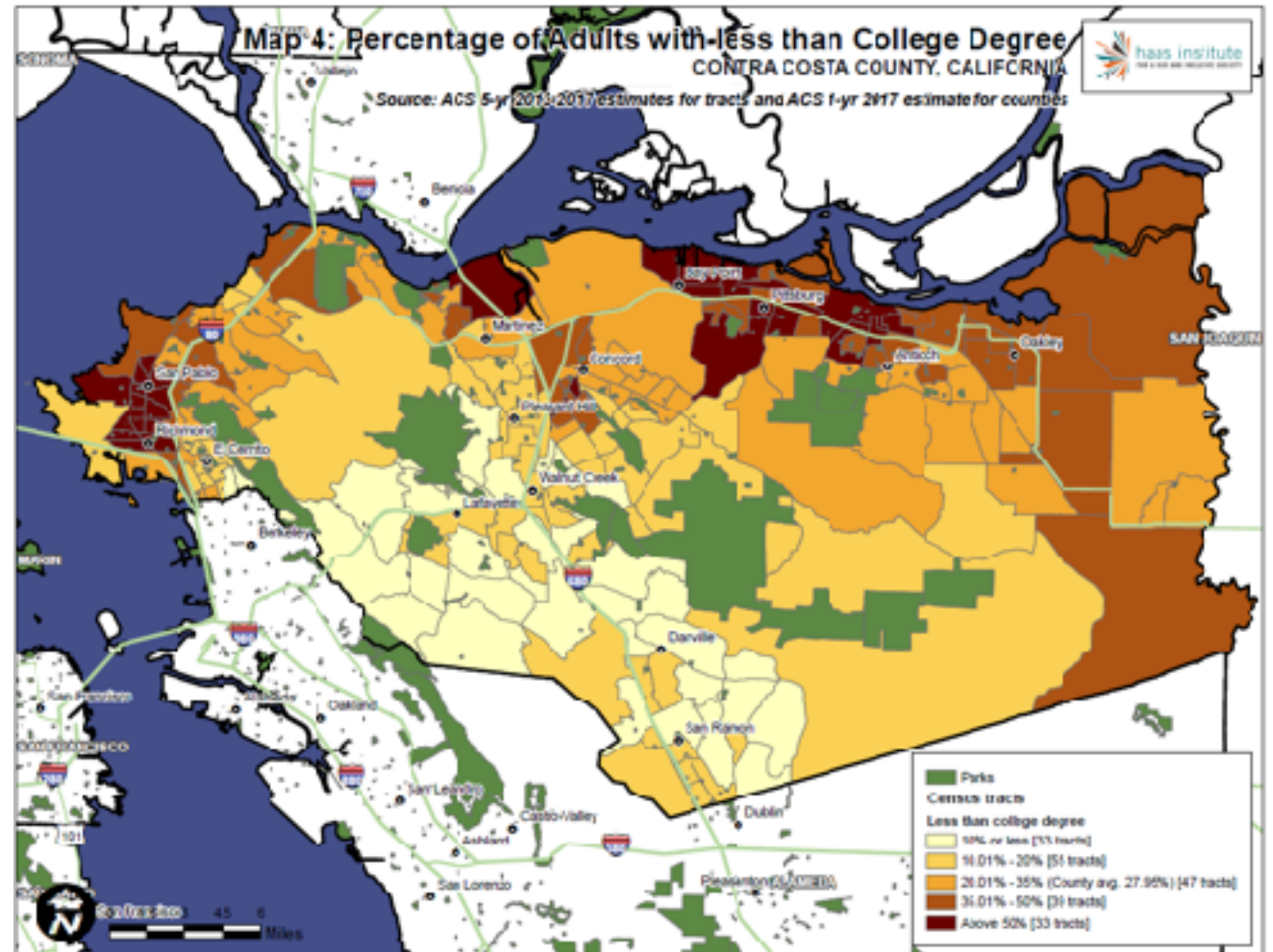
Percentage Renters



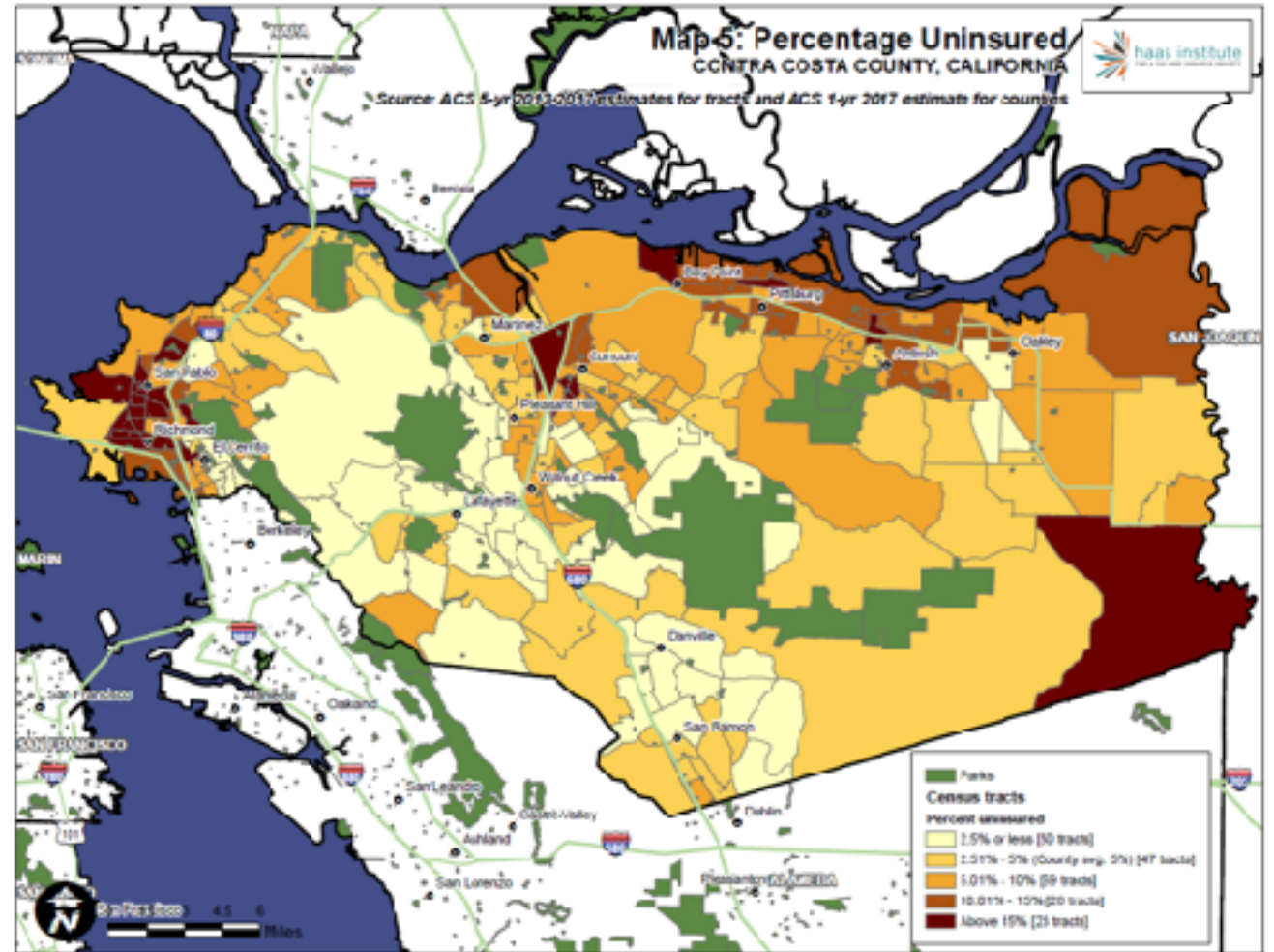
Percentage Low Income



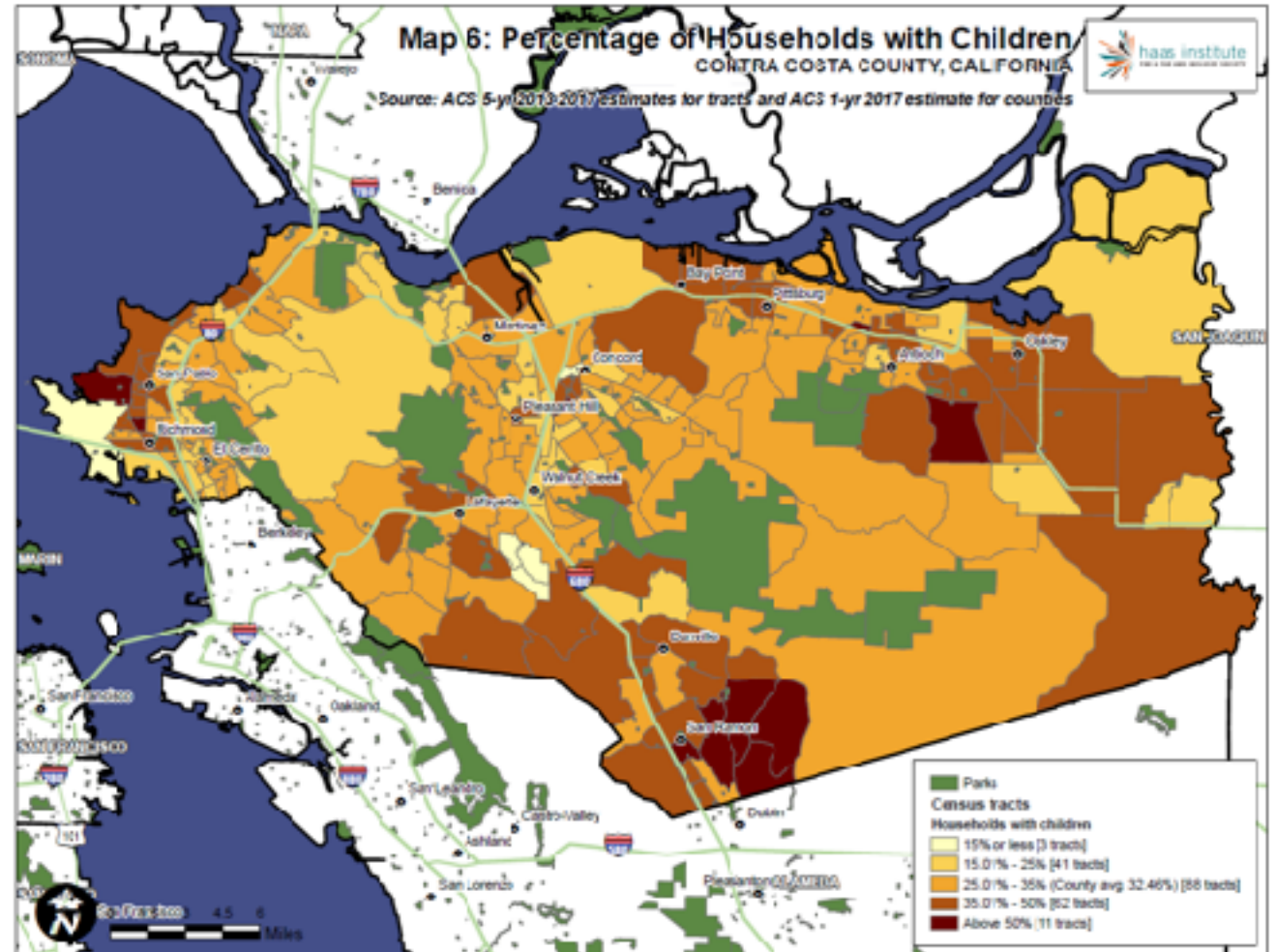
Percentage without College Degree



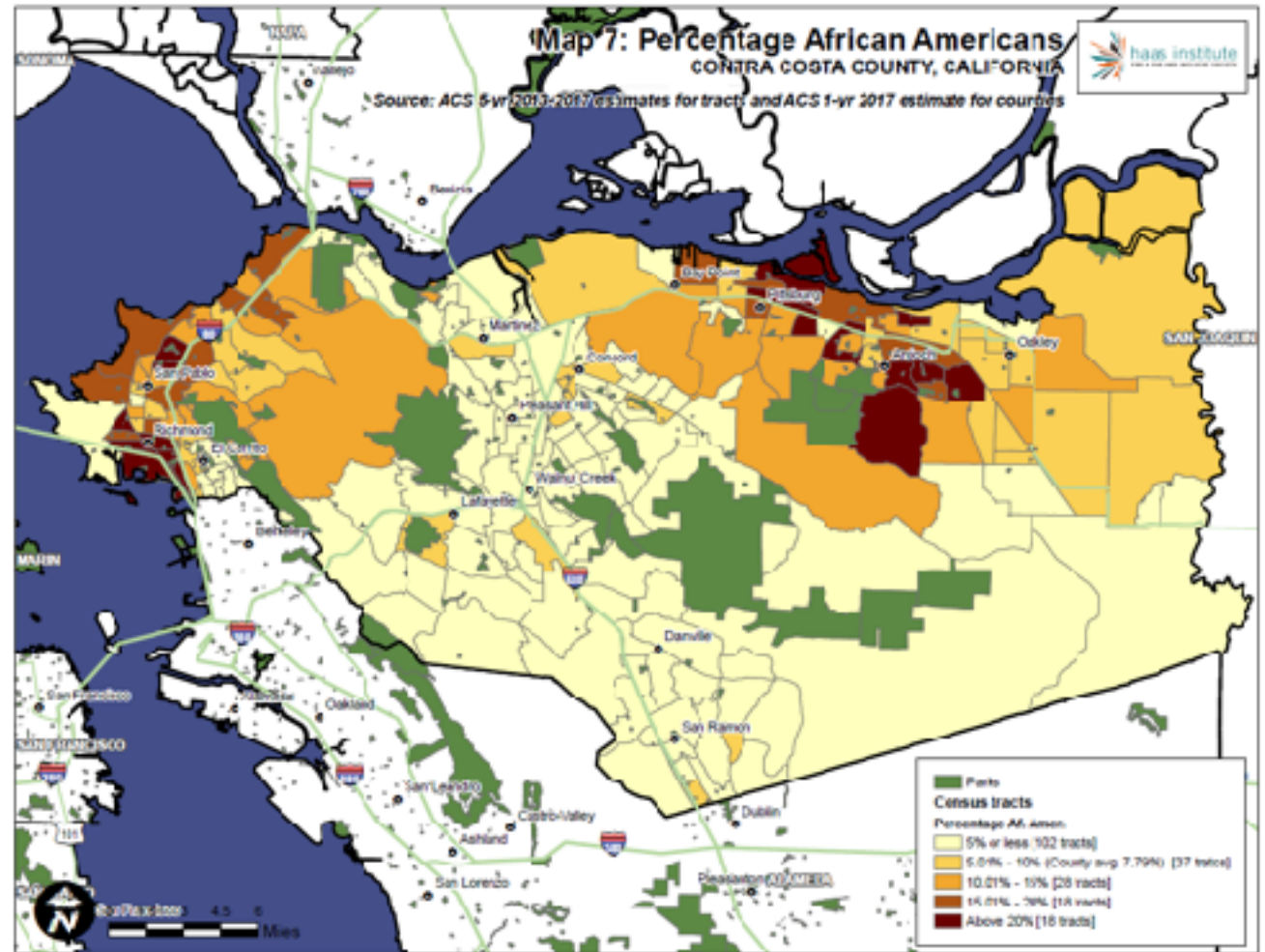
Percentage without Health Insurance



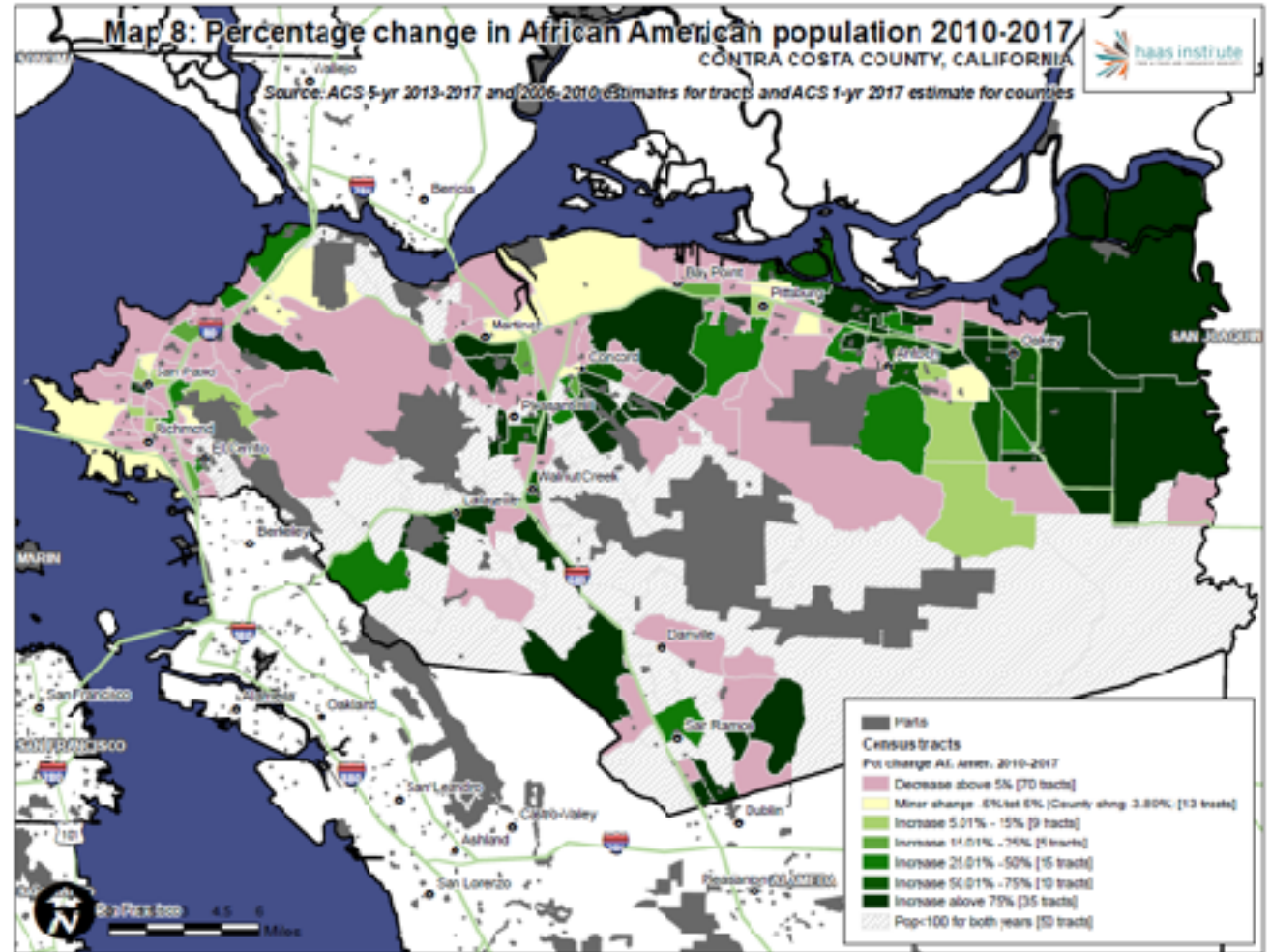
Percentage with Children



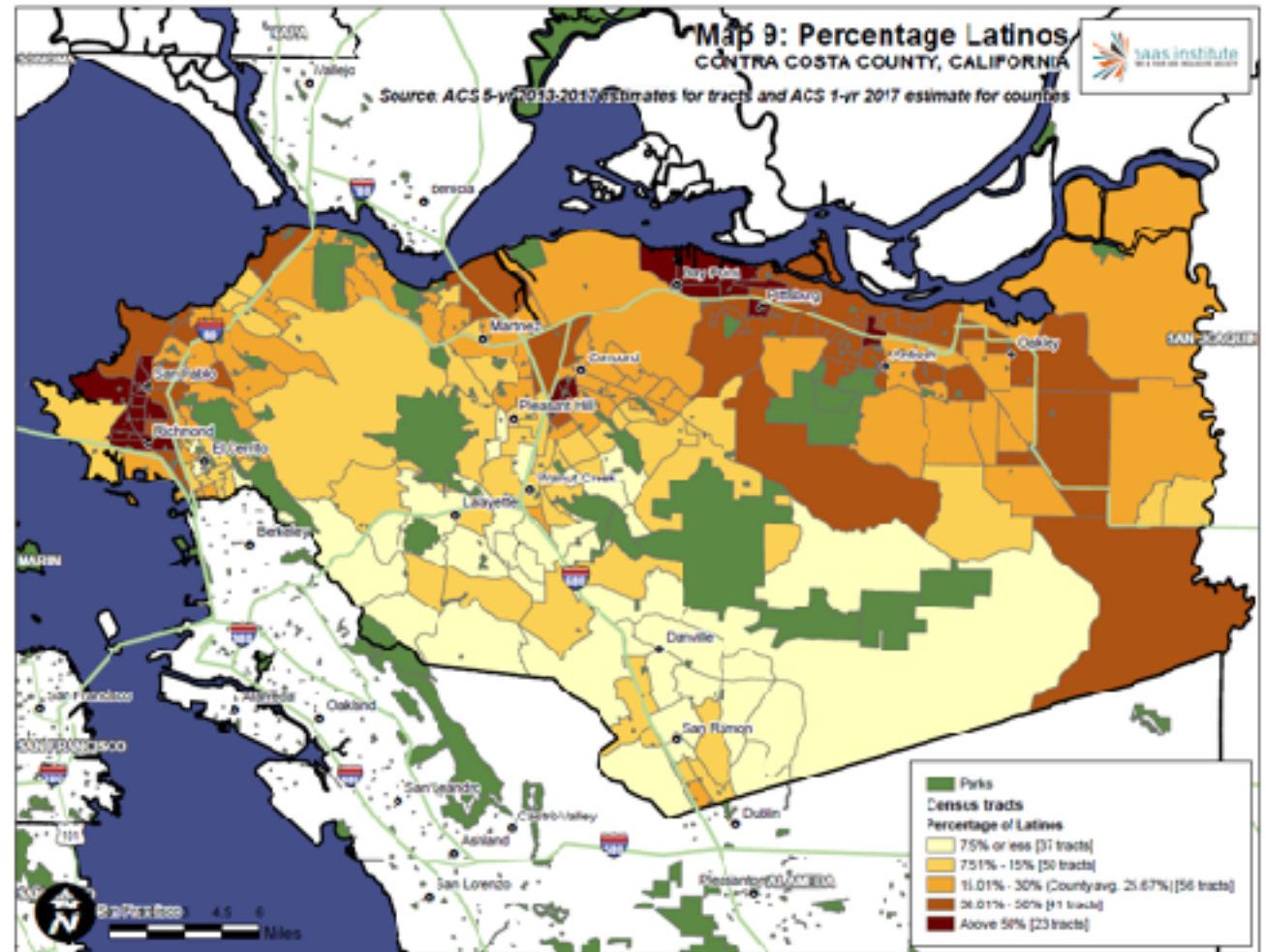
Percentage African American



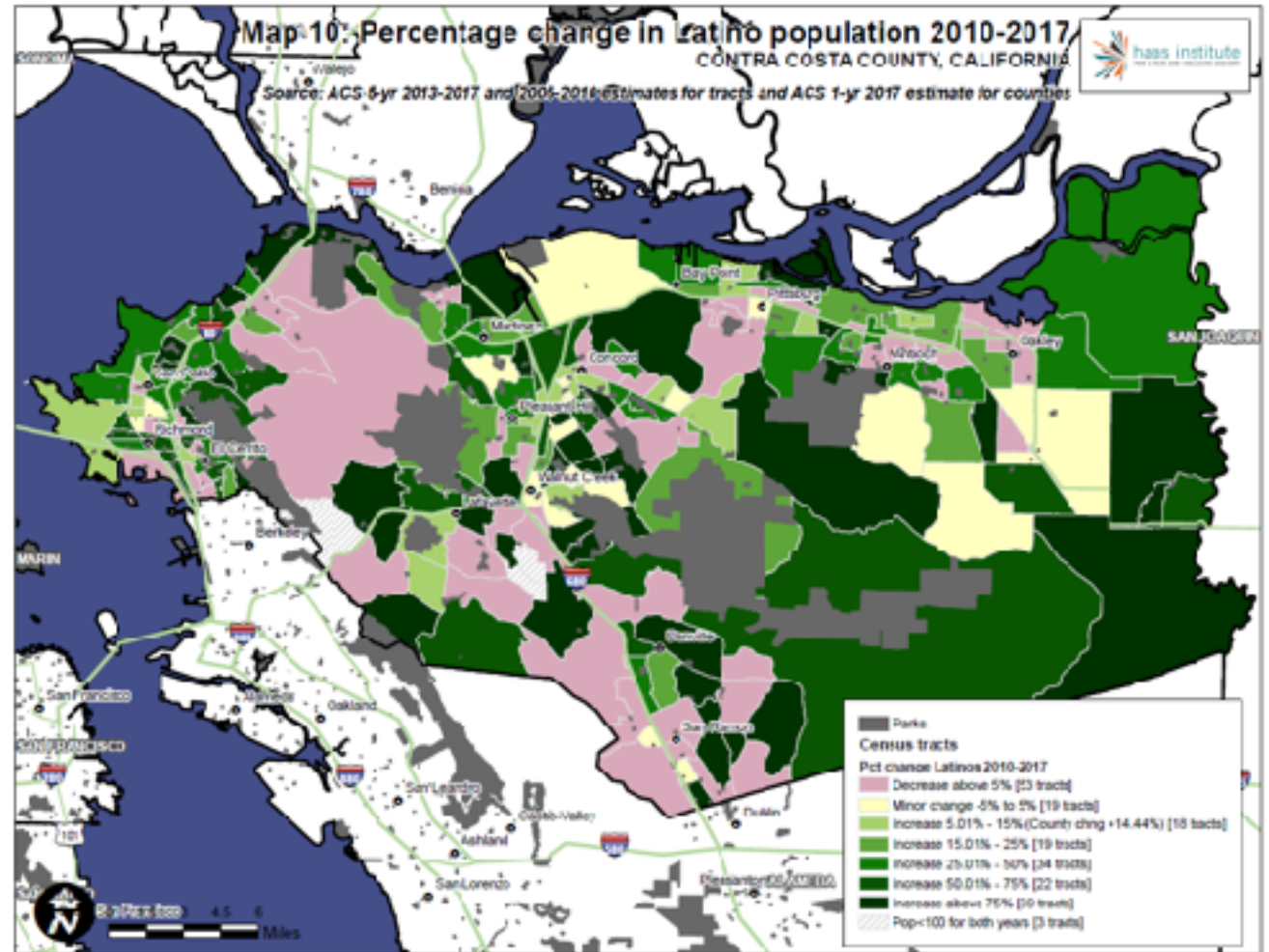
Change in Percentage African American Since 2010



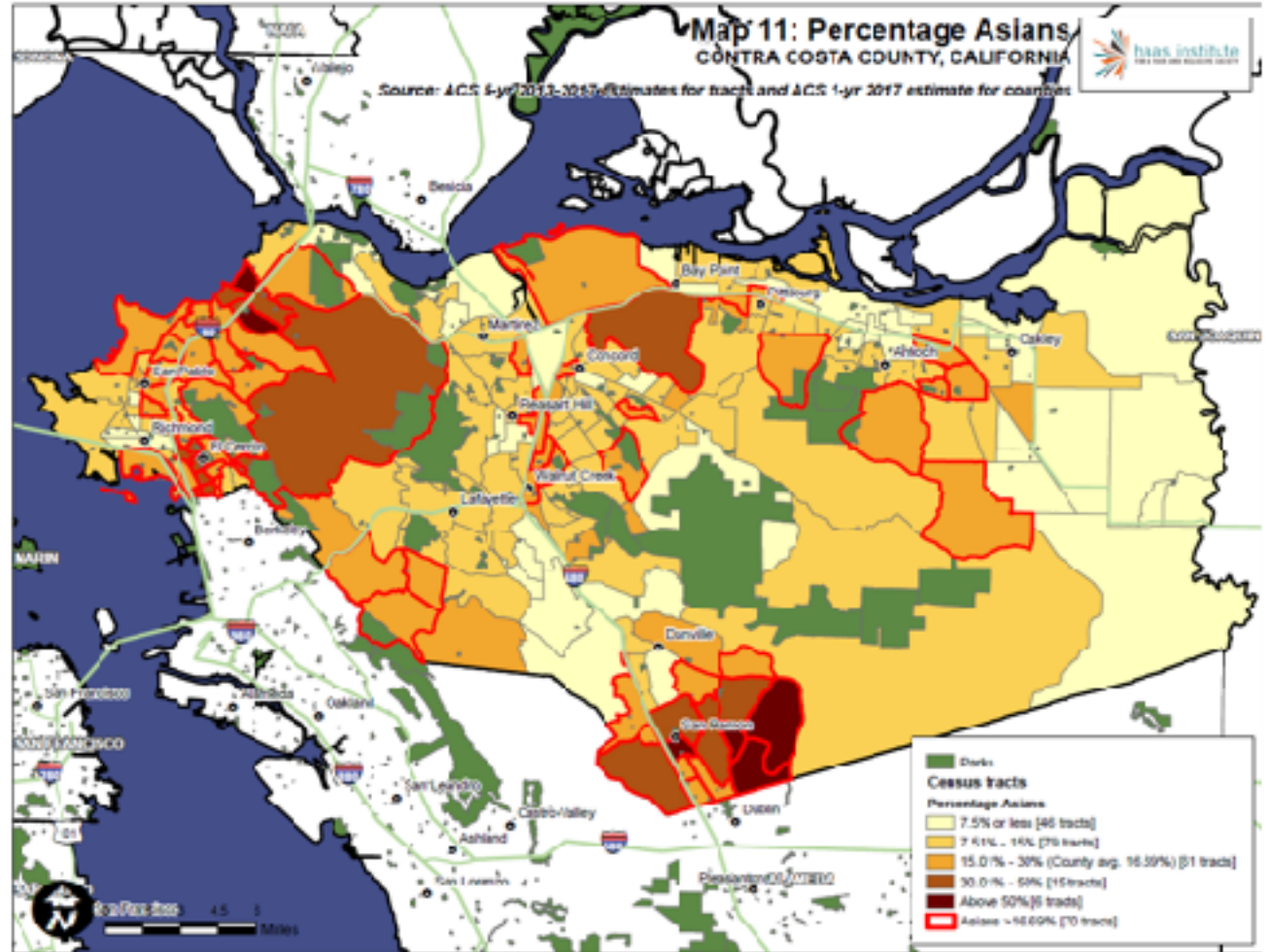
Percentage Latino



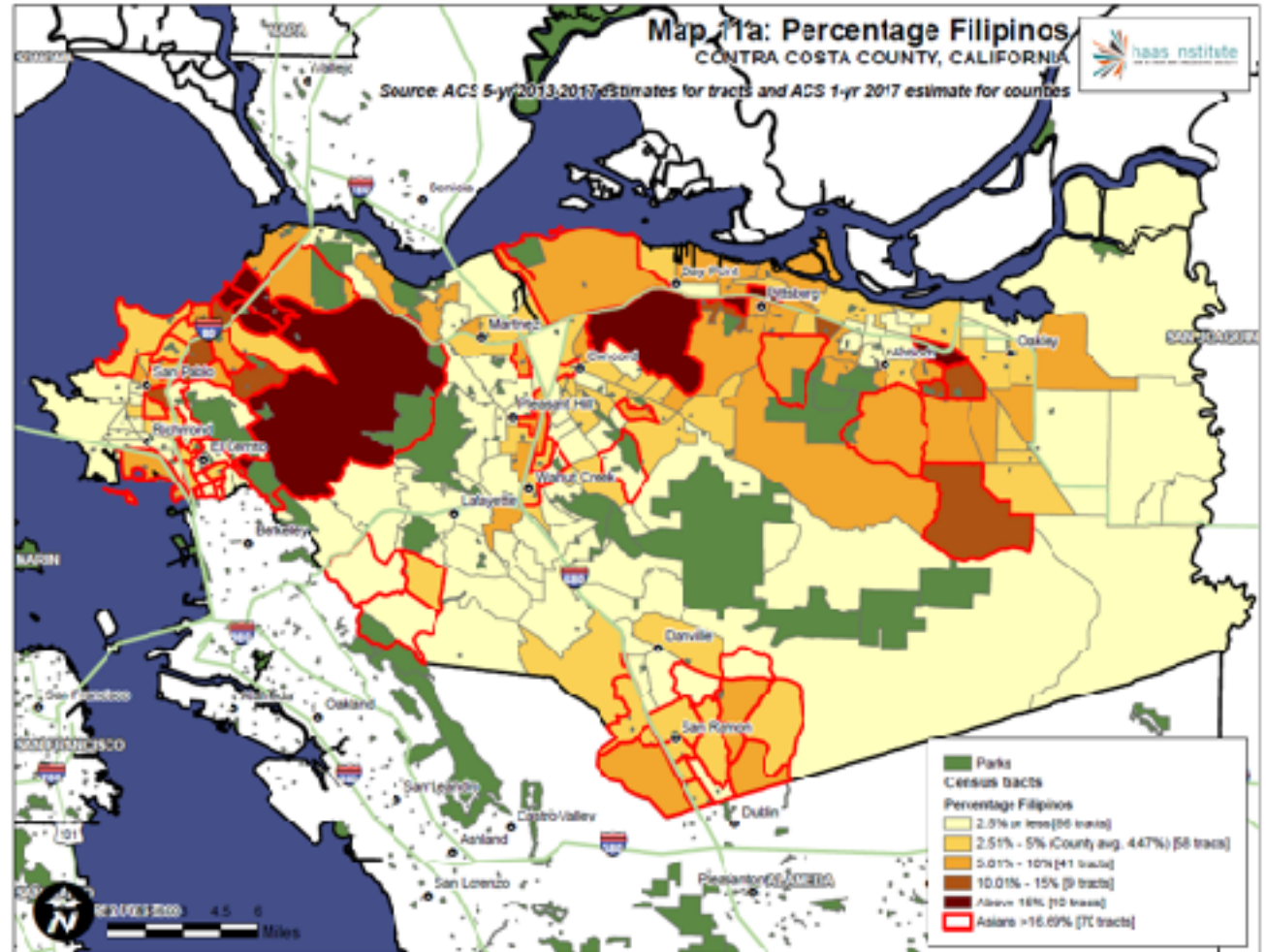
Change in Percentage Latino Since 2010



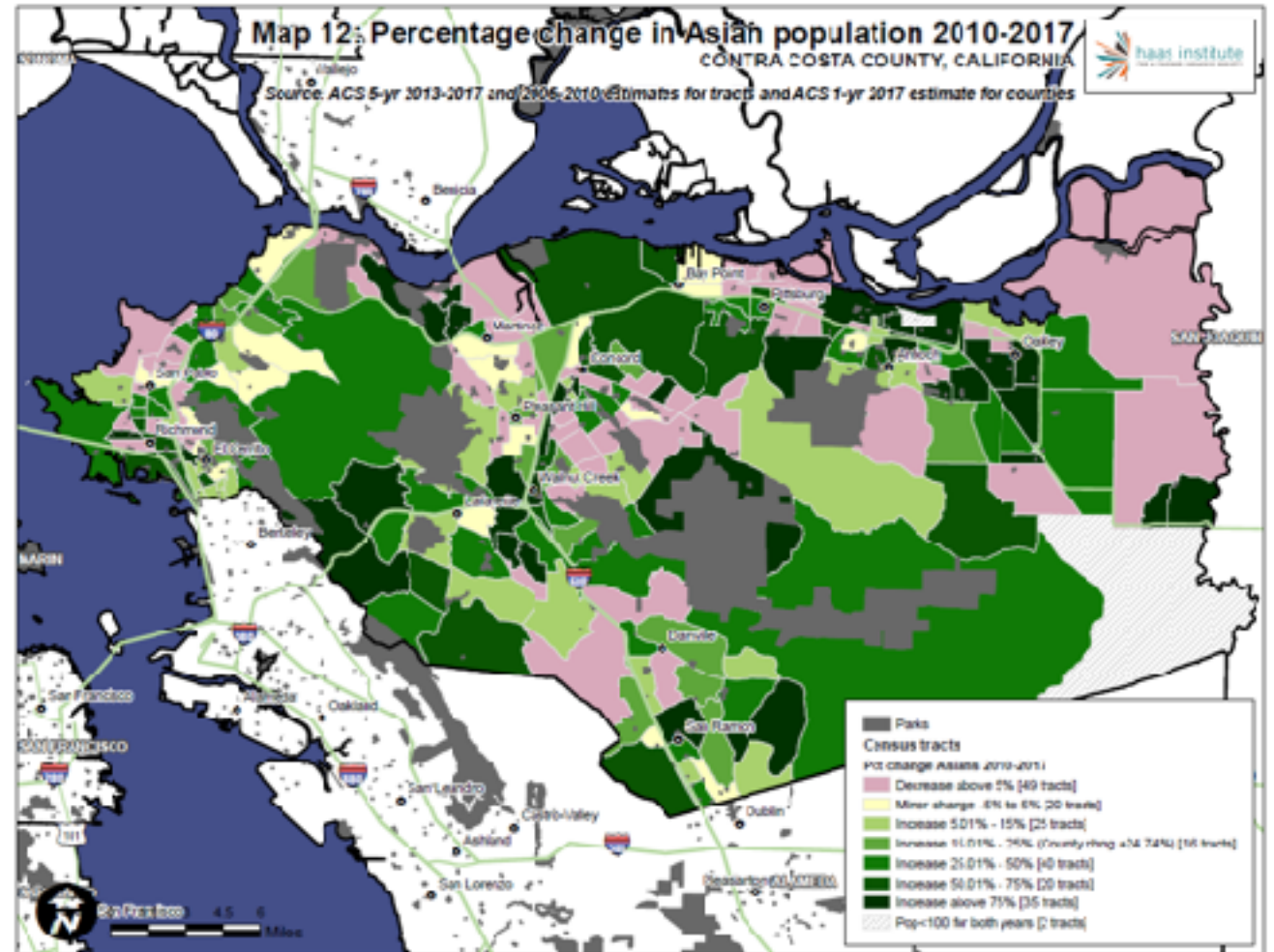
Percentage Asian American



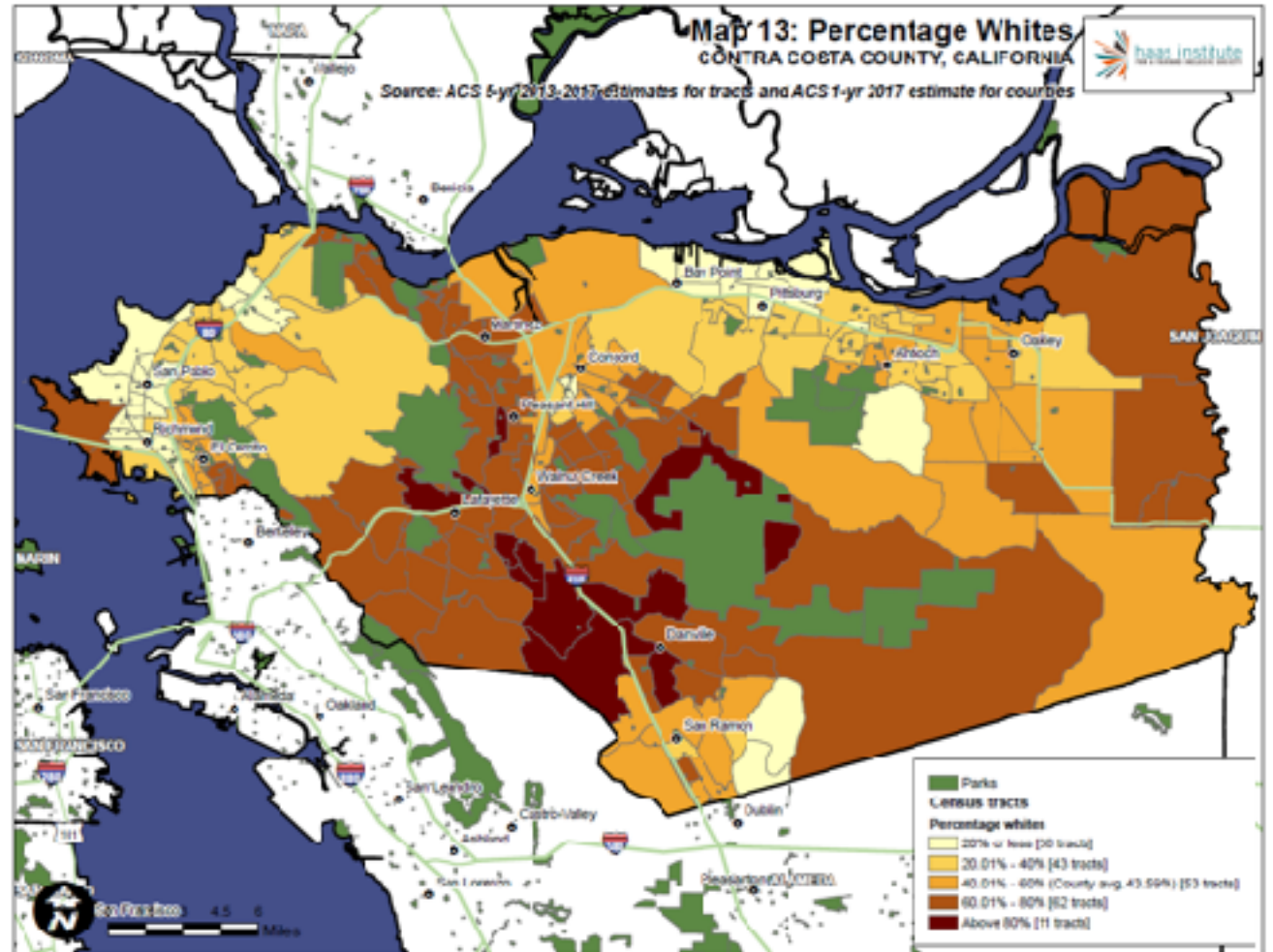
Percentage Filipino



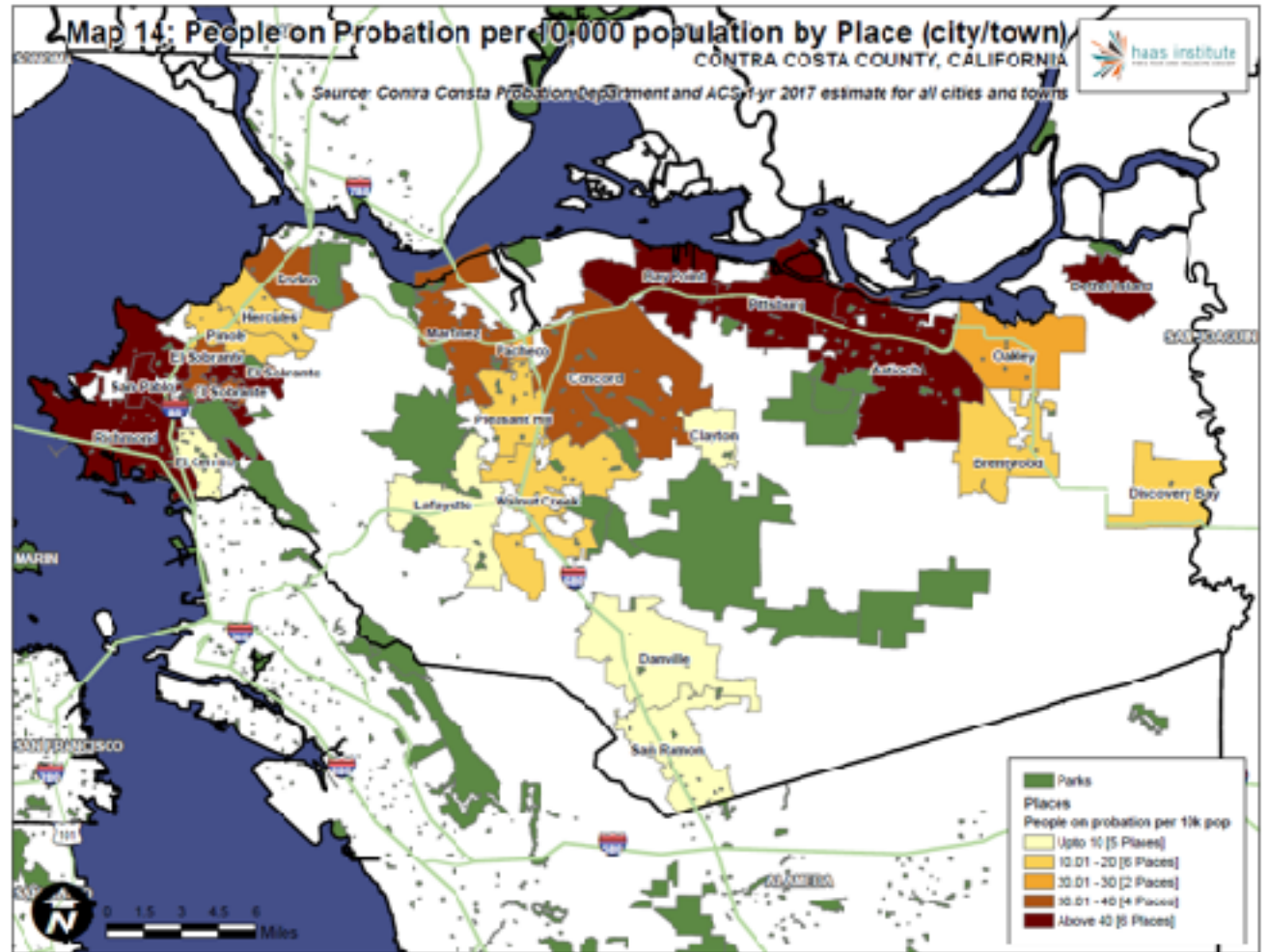
Change in Percentage Asian American Since 2010



Percentage White



Percentage People on Probation

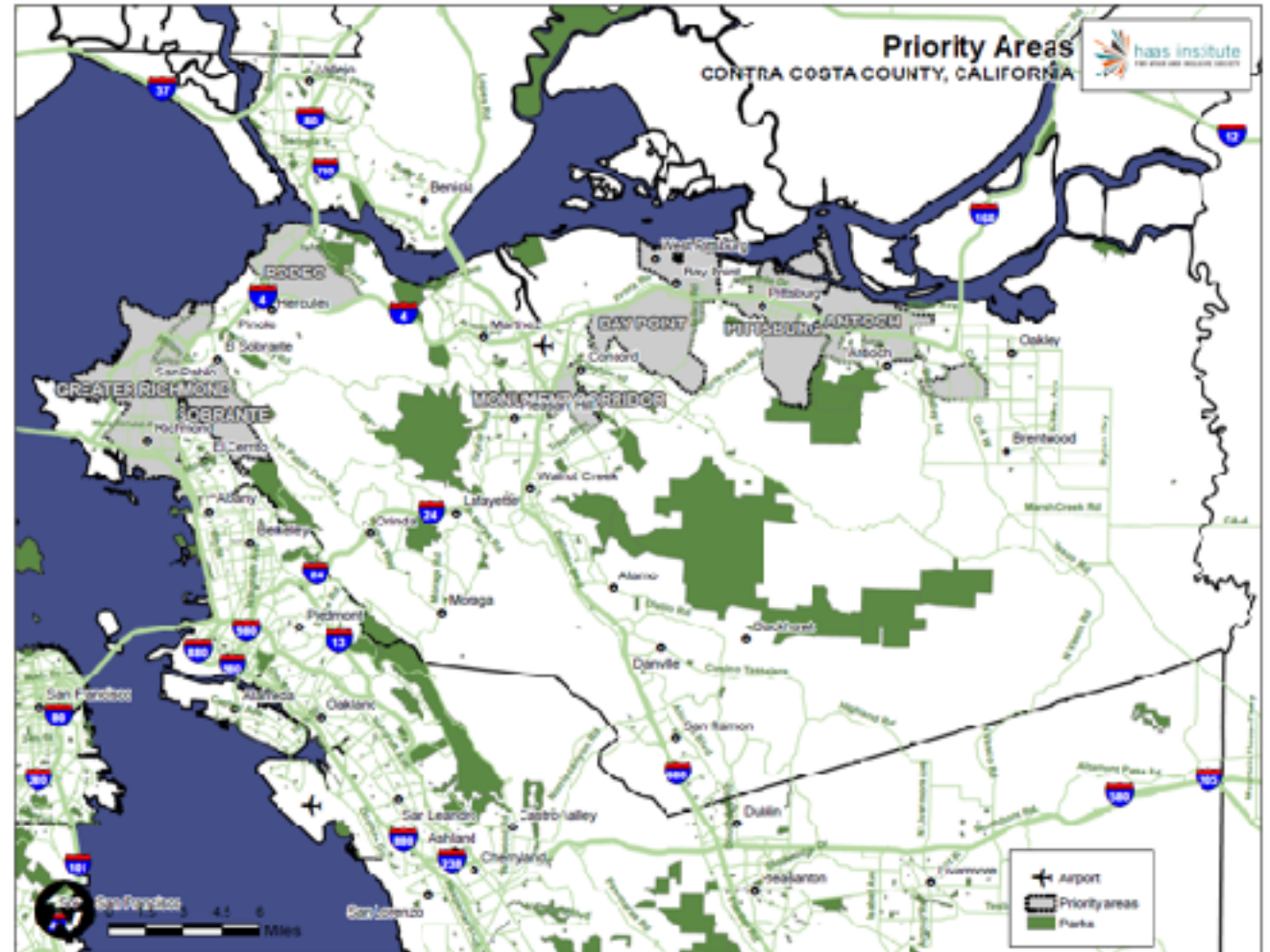


Phase 2: Analyze
civic
engagement in
the priority areas

- Identified Census Tracts with an above average percentage of at least eight of the eleven “key communities”
- Grouped these Census Tracts into larger areas, creating 7 Priority Areas
- Analyzed voting rates and political boundaries

Priority Areas (and population)

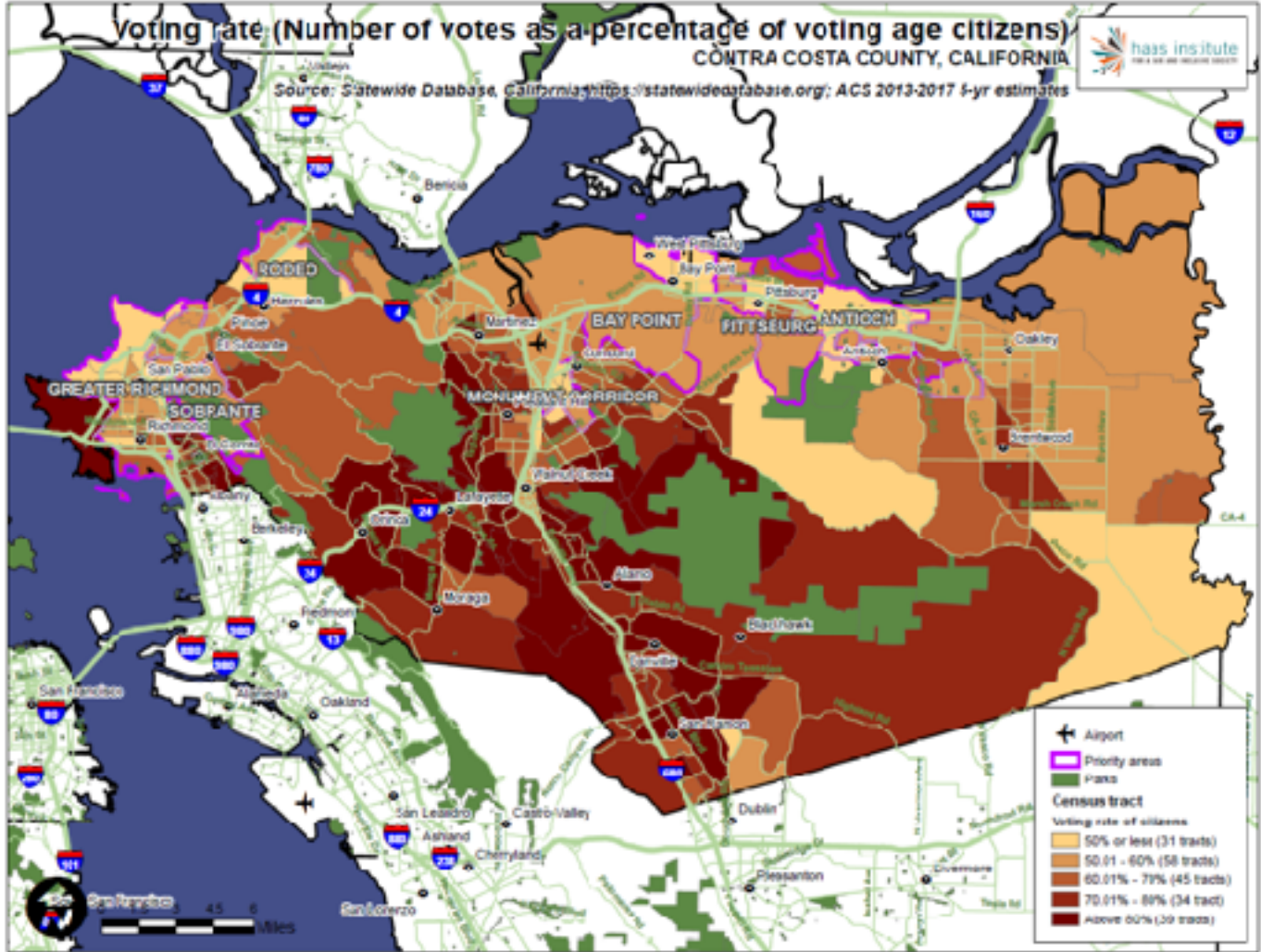
- Greater Richmond (122,360)
- Sobrante (29,560)
- Rodeo (10,630)
- Monument Corridor (33,660)
- Bay Point (32,270)
- Pittsburg (41,250)
- Antioch (54,900)



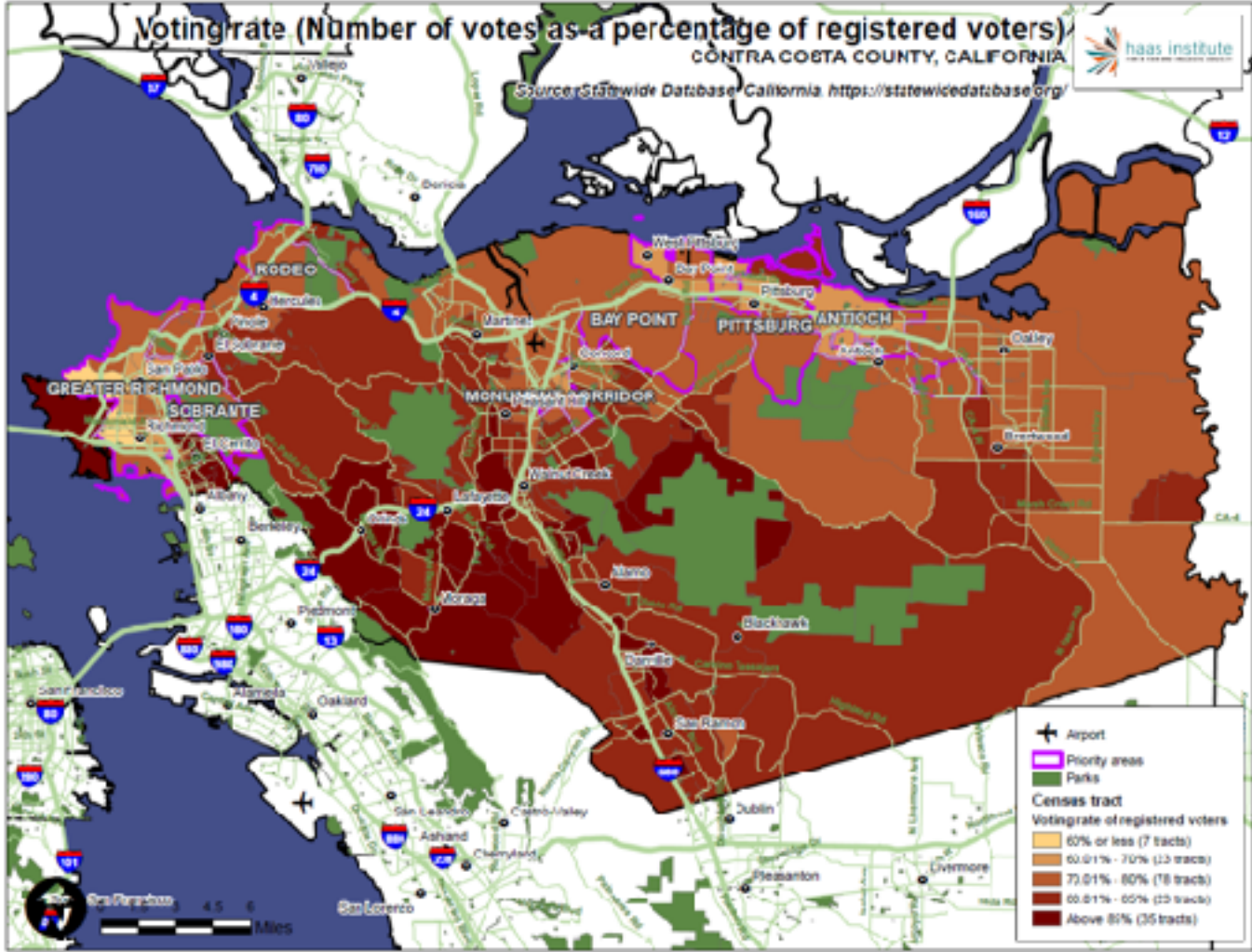
Priority Area
Demographics Overall

	Total Priority Areas	Non-priority areas	County Total
Total population in 2017	324,638	799,040	1,123,678
Households with children	36%	31%	33%
Single-parent households	28%	13%	18%
Renters	51%	27%	34%
On probation	4%	1.5%	2.4%
25 years old with less than college degree	47%	21%	29%
Foreign born	33%	21%	24%
Without health insurance	12%	5%	7%
Earning less than \$50,000 per year	43%	22%	29%
Black	14%	5%	8%
Latino	43%	16%	24%
Asian	15%	17%	16%

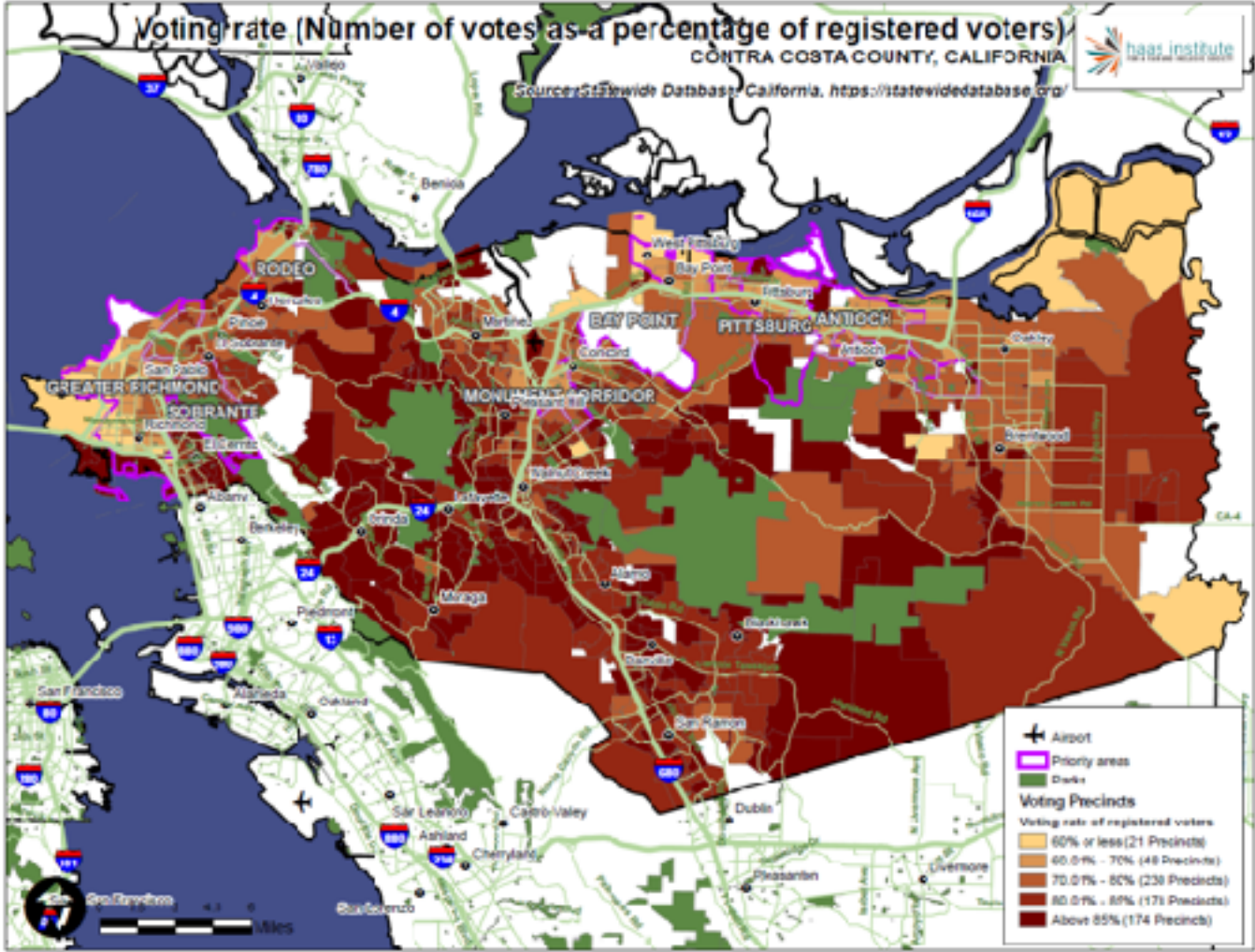
Voting Rate of Eligible Voters in 2016



Voting Rate of Registered Voters in 2016 by Census Tract



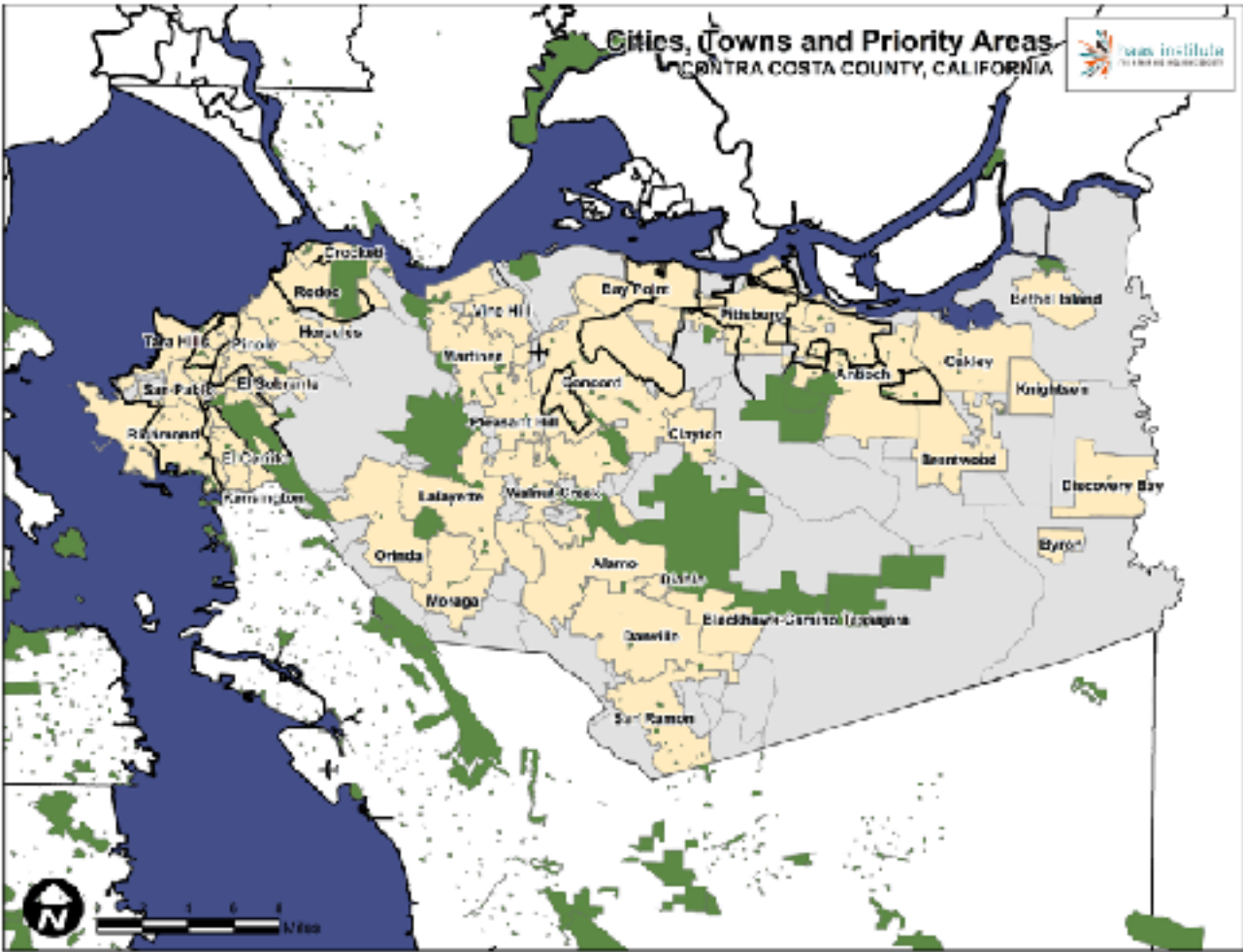
Voting Rate
of Registered
Voters in
2016 by
Precinct



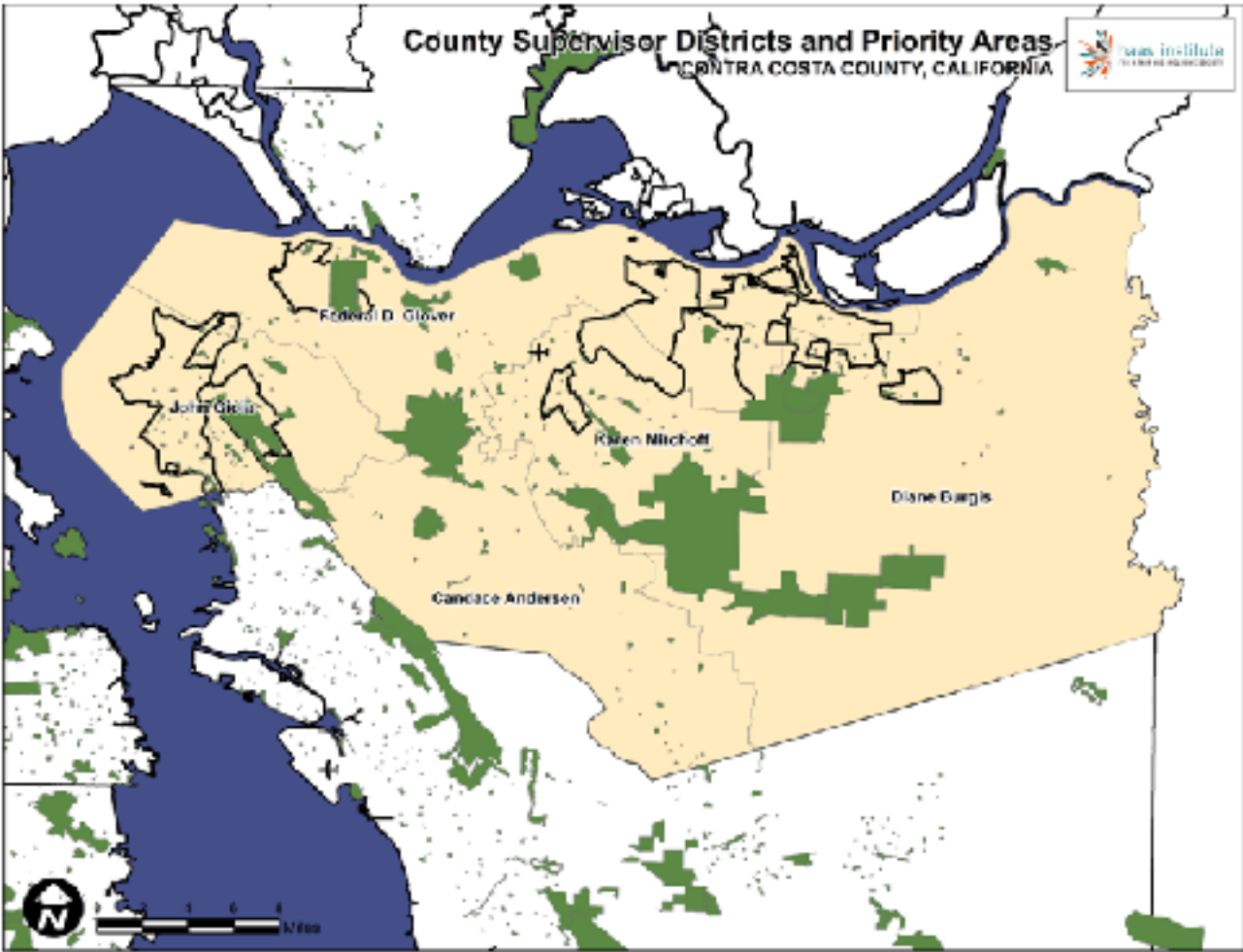
Voting Rates by Priority Area

Priority Areas	Voting age citizens	Registered voters	Actual voters	Voting rate for registered voters	Voting rate for citizens
Antioch	33,313	23,541	16,333	69%	49%
Bay Point	17,381	11,296	7,876	70%	45%
Greater Richmond	62,807	49,554	33,001	67%	53%
Monument Corridor	15,955	10,702	7,805	73%	49%
Pittsburg	24,839	18,335	13,145	72%	53%
Rodeo	7,500	5,340	3,976	74%	53%
Sobrante	20,448	14,334	10,970	77%	54%
All Priority Areas	182,243	133,102	93,106	70%	51%
Non-priority Areas	561,604	477,562	388,251	81%	69%
Grand Total	743,847	610,664	481,357	79%	65%

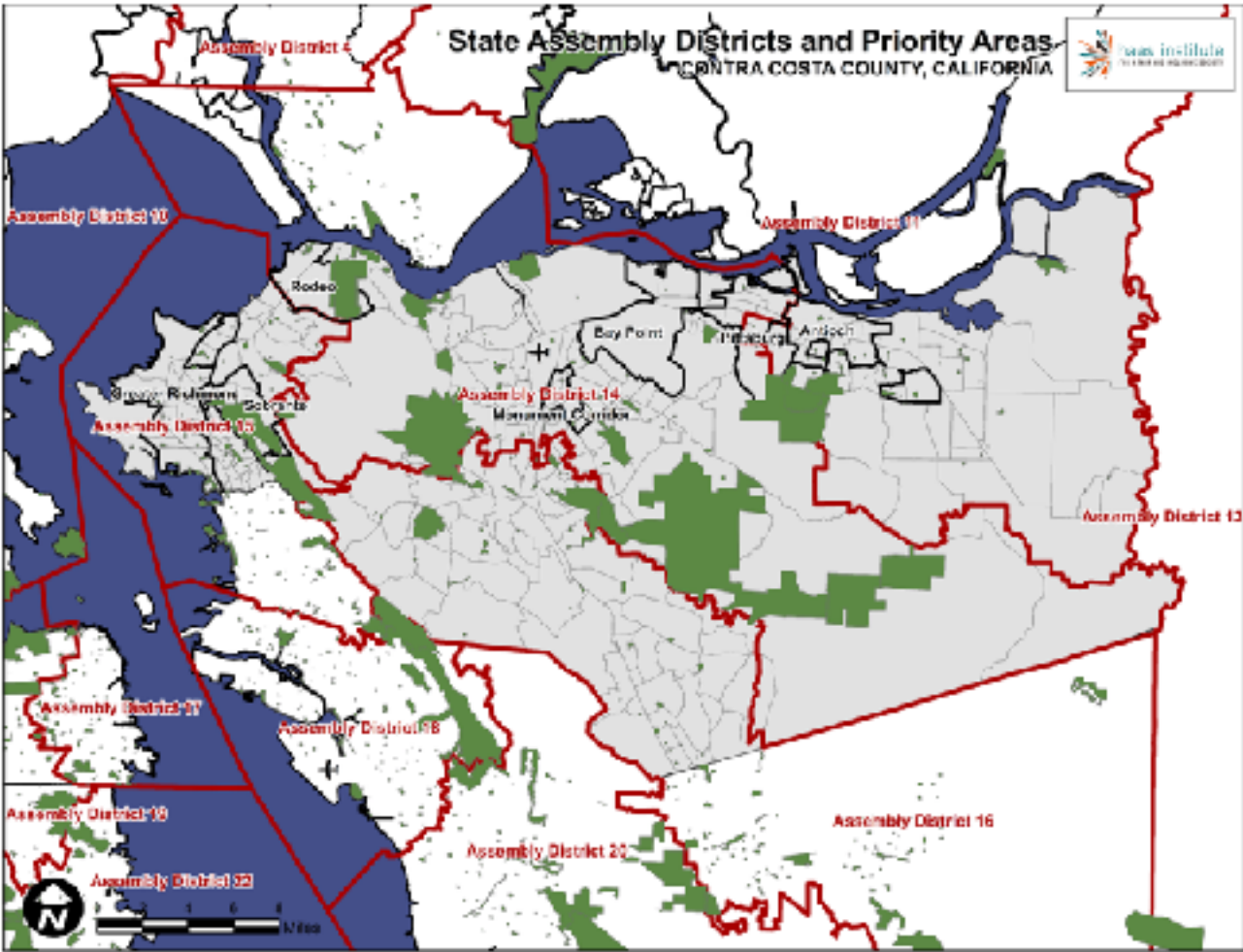
Cities and Towns with Priority Areas



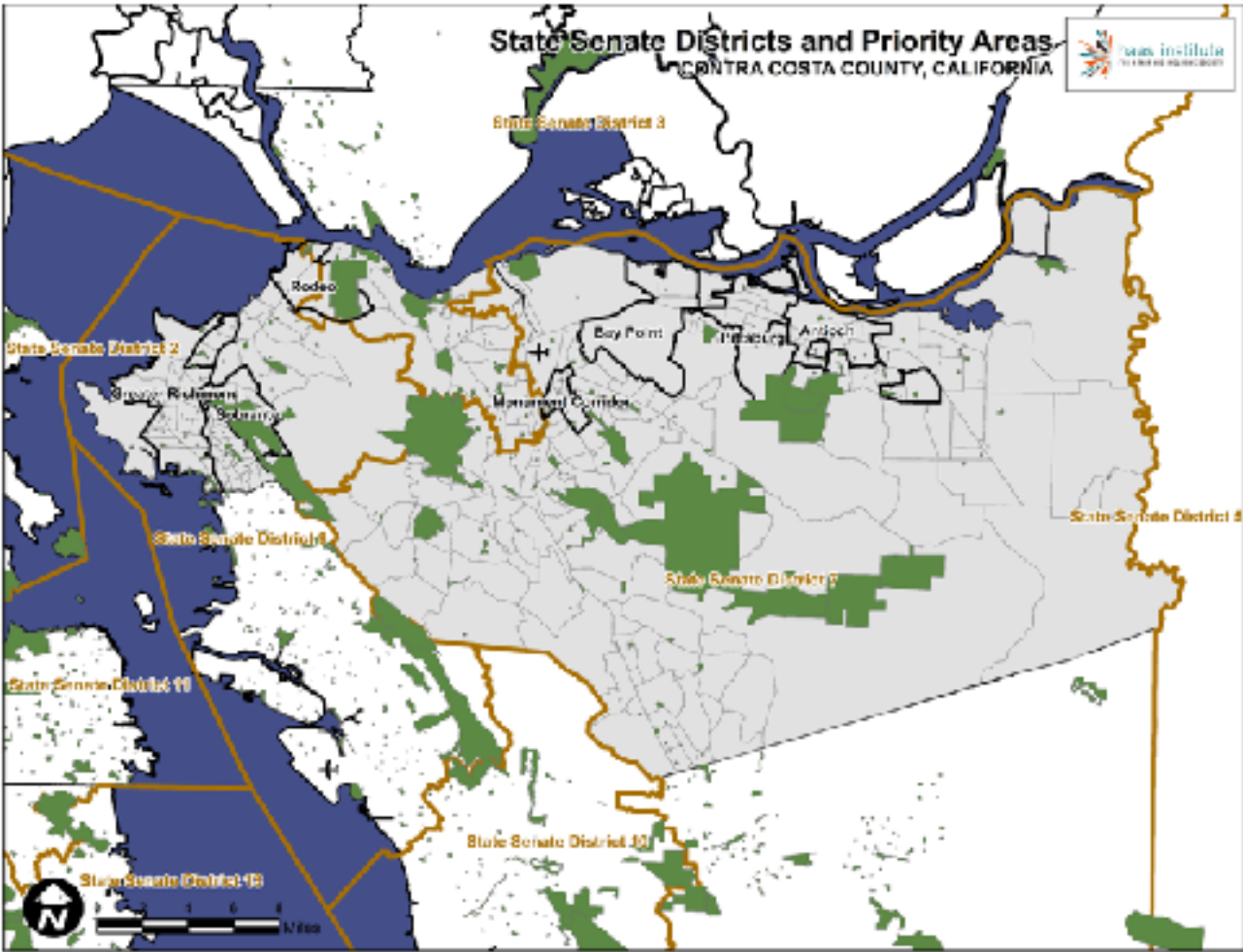
County
Supervisor
Districts
with Priority
Areas



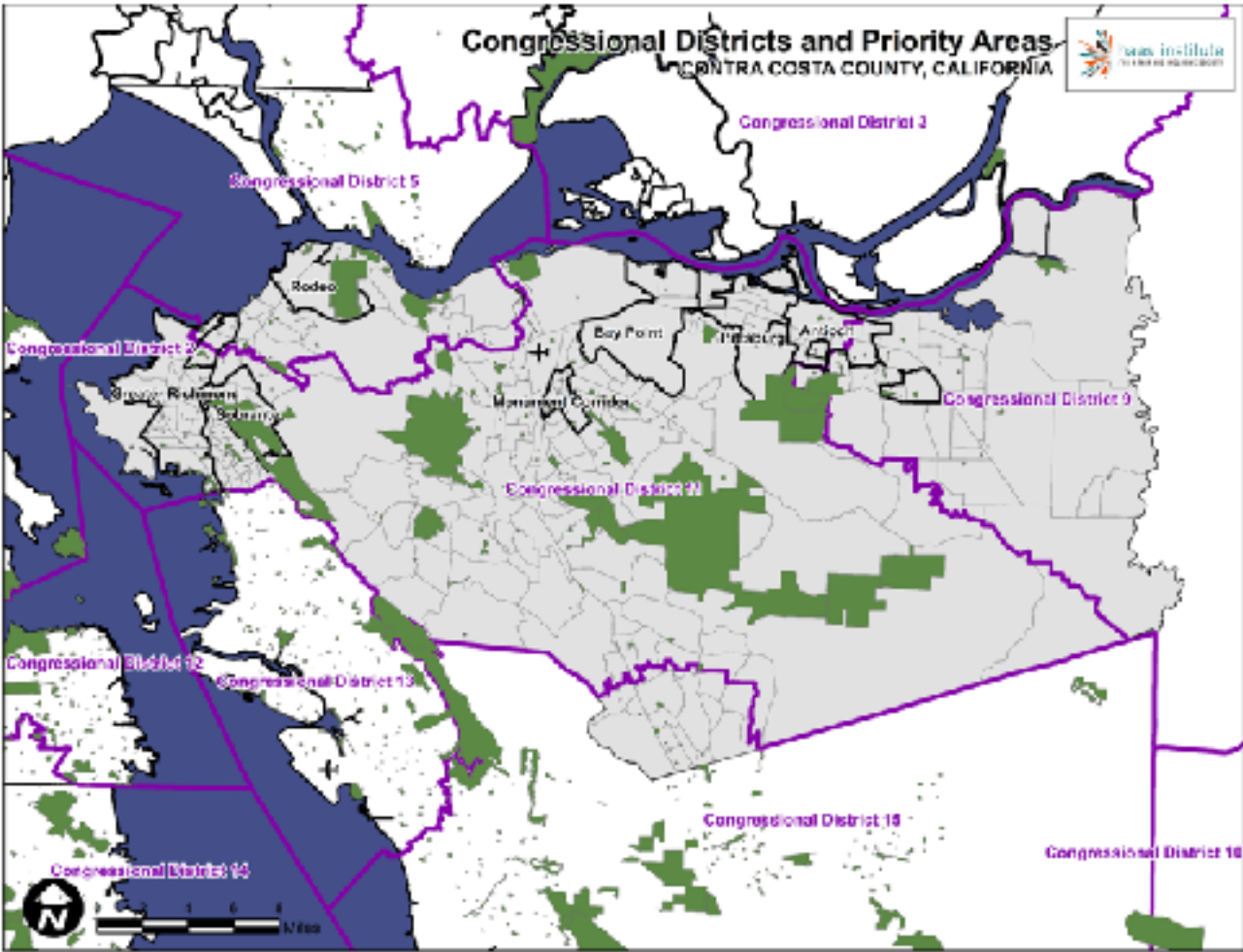
State
Assembly
Districts
with Priority
Areas



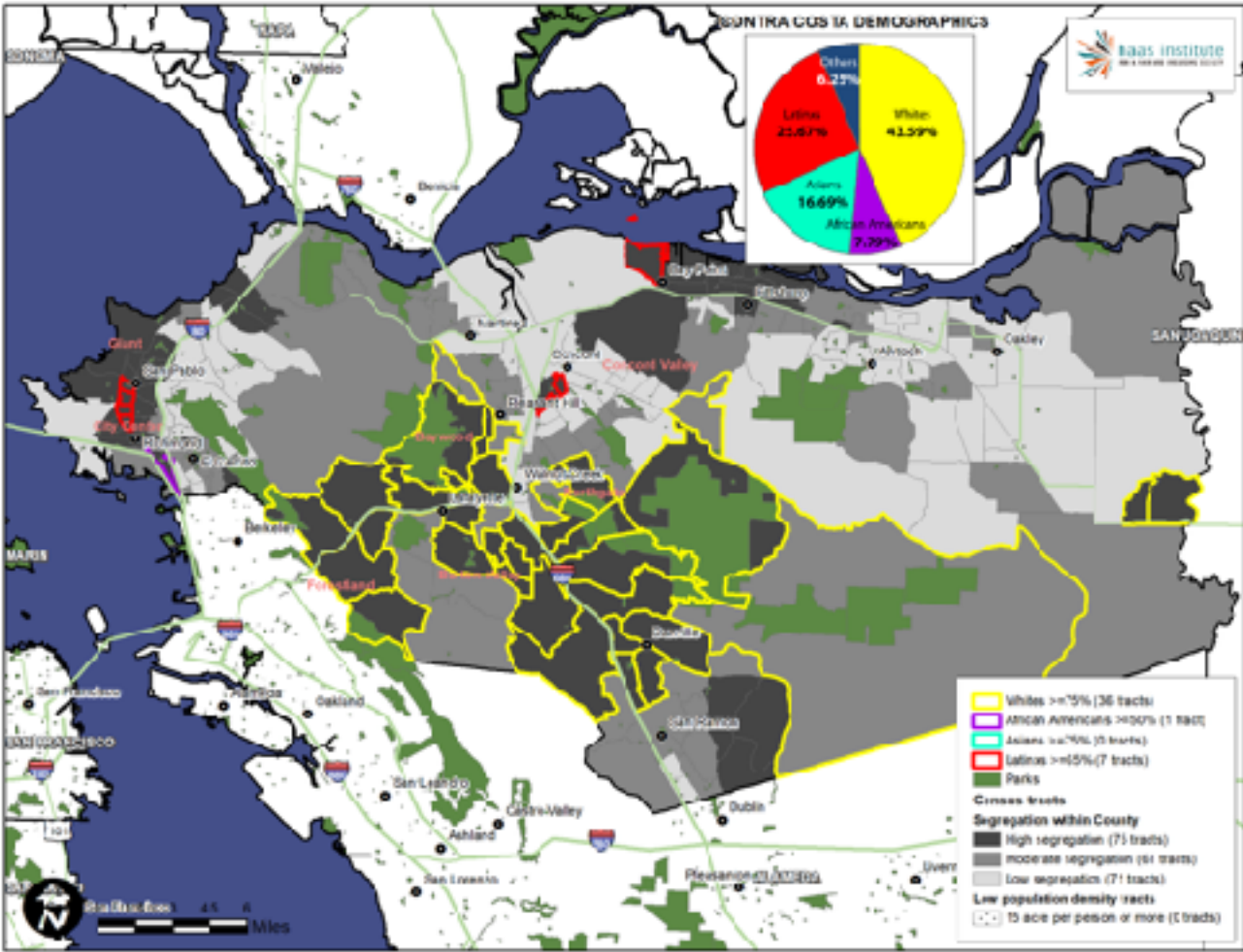
State Senate Districts with Priority Areas



Congressional Districts with Priority Areas



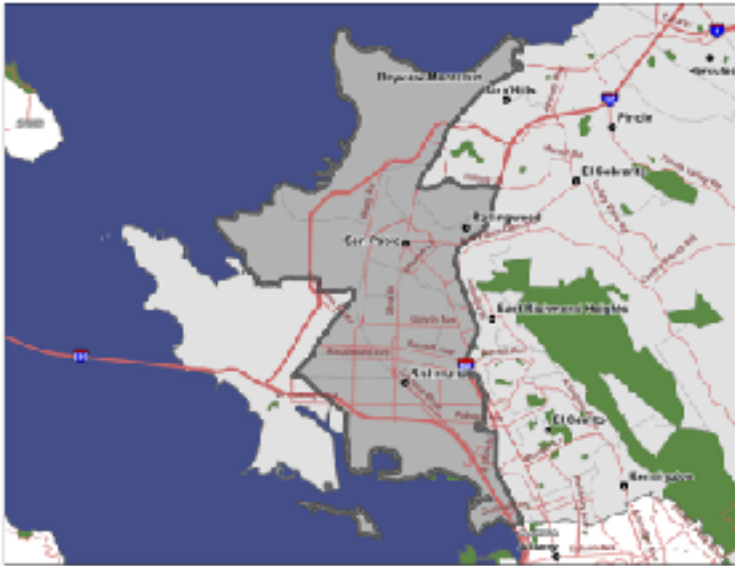
Racial Residential Segregation



Zooming in on Each Priority
Area

Greater Richmond Area

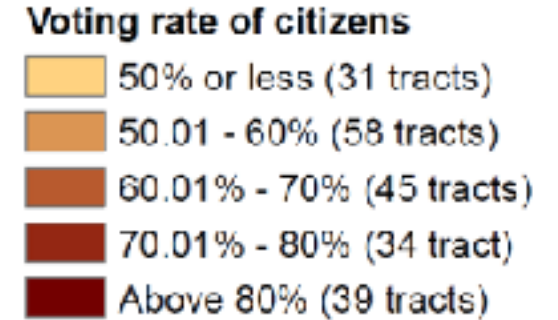
North Richmond, San Pablo, and parts of Richmond



	Greater Richmond	County Total
Total population in 2017	122,357	1,123,678
Households with children	37%	33%
Single-parent households	31%	18%
Renters	56%	34%
On probation	5.5%	2.4%
25 yrs old with less than college degree	57%	29%
Foreign born	40%	24%
Without health insurance	16%	7%
Earning less than \$50,000 per year	50%	29%
Black	18%	8%
Latino	56%	24%

Greater Richmond

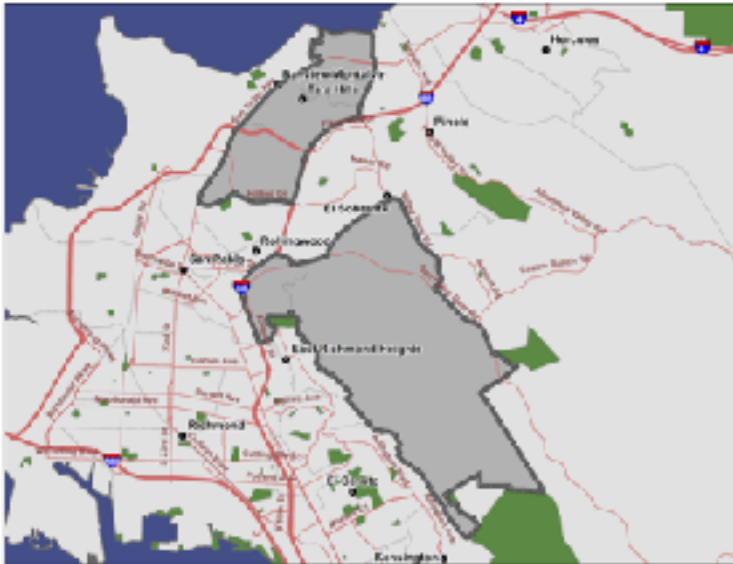
- **Richmond Mayor:** Tom Butt
- **Richmond City Council:** Melvin Willis, Eduardo Martinez, Jael Myrick, Nat Bates, Demnlus Johnson, Ben Choi
- **San Pablo Mayor:** Rich Kinney
- **San Pablo City Council:** Arturo Cruz, Elizabeth Pabon-Alvarado, Rita Xavier, Abel Pineda
- **North Richmond (unincorporated) Municipal Advisory Committee:** Don Gilmore, Karen Garcia, Annie King Meredith, Beverly Scott, Dr. Henry Clark, Lily Rahnema
- **County Supervisor:** John Gioia
- **State Senator:** Nancy Skinner (District 9)
- **State Assembly Member:** Buffy Wicks (District 15)
- **Congress Representative:** Mark DeSaulnier (District 11)



Voting age citizens	Registered voters	Actual voters	Voting rate for registered voters	Voting rate for citizens
62,807	49,554	33,001	67%	53%

Sobrante Area

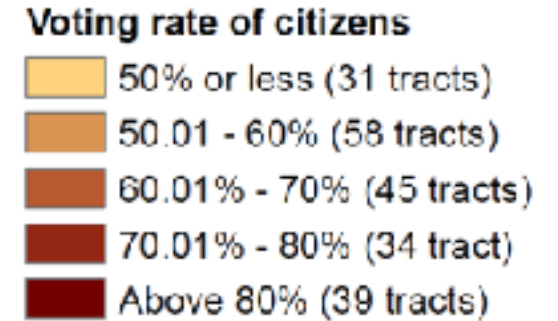
El Sobrante and northern most part of Richmond



	Sobrante	County Total
Total population in 2017	29,560	1,123,678
Households with children	26%	33%
Single-parent households	21%	18%
Renters	45%	34%
On probation	4.1%	2.4%
25 yrs old with less than college degree	36%	29%
Foreign born	31%	24%
Without health insurance	11%	7%
Earning less than \$50,000 per year	35%	29%
Black	15%	8%
Latino	30%	24%

Sobrante

- **Richmond Mayor:** Tom Butt
- **Richmond City Council:** Melvin Willis, Eduardo Martinez, Jael Myrick, Nat Bates, Demnlus Johnson, Ben Choi
- **El Sobrante (unincorporated area) Municipal Advisory Committee:** Xina Ash, Tom Lang, Tom Owens, Dr. Melinda V. McClain, Jim Hermann, Andrew Chahrour
- **County Supervisor:** John Gioia
- **State Senator:** Nancy Skinner (District 9)
- **State Assembly Member:** Buffy Wicks (District 15)
- **Congress Representative:** Mark DeSaulnier (District 11)



Voting age citizens	Registered voters	Actual voters	Voting rate for registered voters	Voting rate for citizens
20,448	14,334	10,970	77%	54%

Rodeo Area

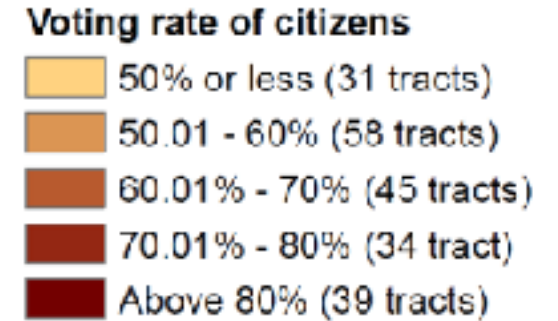
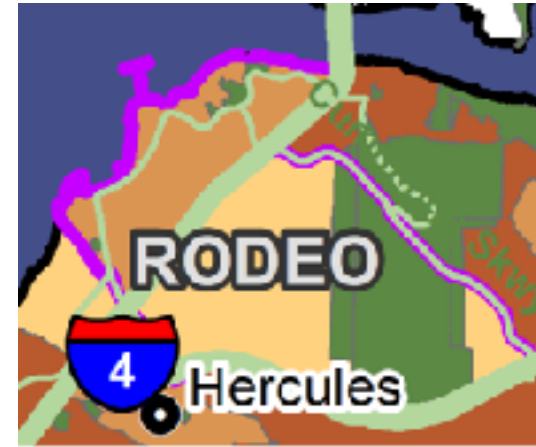
Partial area of Rodeo



	Rodeo Area	County Total
Total population in 2017	10,631	1,123,678
Households with children	32%	33%
Single-parent households	29%	18%
Renters	35%	34%
On probation	3.2%	2.4%
25 yrs old with less than college degree	41%	29%
Foreign born	25%	24%
Without health insurance	7%	7%
Earning less than \$50,000 per year	35%	29%
Black	13%	8%
Latino	32%	24%
Asian	21%	16%

Rodeo Area

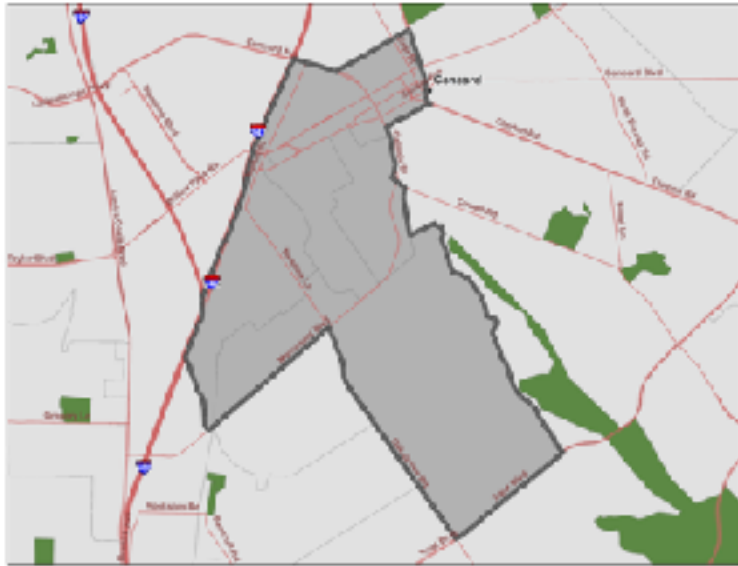
- **Rodeo (unincorporated area) Municipal Advisory Committee:** Deborah Drake, Anthony Hodge, Clover Mahn, Theresa Foglio, Barbara Vargen-Kotchevar
- **County Supervisor:** Federal Glover
- **State Senator:** Nancy Skinner (District 9)
- **State Assembly Member:** Tim Grayson (District 14)
- **Congress Representative:** Mike Thompson



Voting age citizens	Registered voters	Actual voters	Voting rate for registered voters	Voting rate for citizens
7,500	5,340	3,976	74%	53%

Monument Corridor

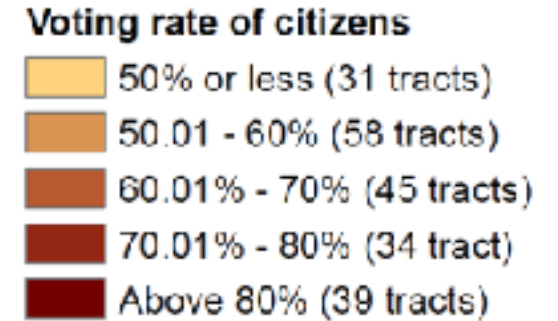
Partial area of Concord



	Monument Corridor	County Total
Total population in 2017	33,660	1,123,678
Households with children	34%	33%
Single-parent households	24%	18%
Renters	74%	34%
On probation	3.3%	2.4%
25 yrs old with less than college degree	47%	29%
Foreign born	43%	24%
Without health insurance	18%	7%
Earning less than \$50,000 per year	51%	29%
Black	4%	8%
Latino	49%	24%

Monument Corridor Area

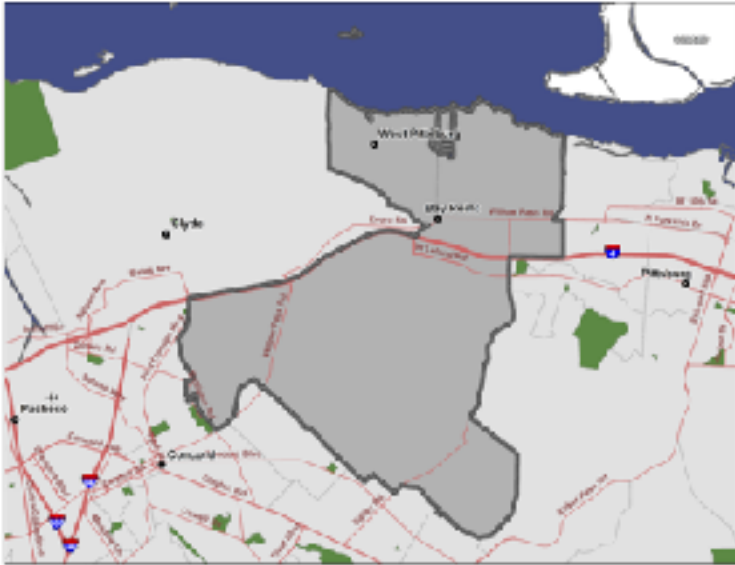
- **Concord Mayor:** Carlyn Obringer
- **Concord City Council:** Tim McGallian, Dominic Aliano, Edi E Birsan, Laura Hoffmeister
- **County Supervisor:** Karen Mitchoff
- **State Senator:** Steve Glazer (District 7)
- **State Assembly Member:** Timothy Grayson (District 14)
- **Congress Representative:** Mark DeSaulnier (District 11)



Voting age citizens	Registered voters	Actual voters	Voting rate for registered voters	Voting rate for citizens
15,955	10,702	7,805	73%	49%

Bay Point Area

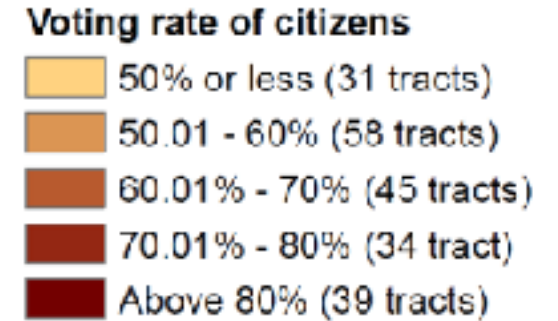
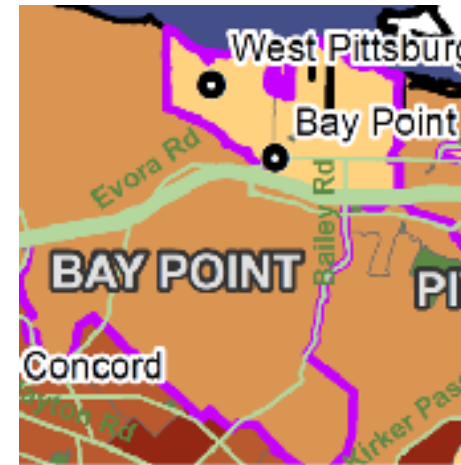
Partial Area of Bay Point



	Bay Point	County Total
Total population in 2017	32,271	1,123,678
Households with children	45%	33%
Single-parent households	33%	18%
Renters	46%	34%
On probation	4.8%	2.4%
25 yrs old with less than college degree	52%	29%
Foreign born	36%	24%
Without health insurance	14%	7%
Earning less than \$50,000 per year	46%	29%
Black	11%	8%
Latino	54%	24%

Bay Point Area

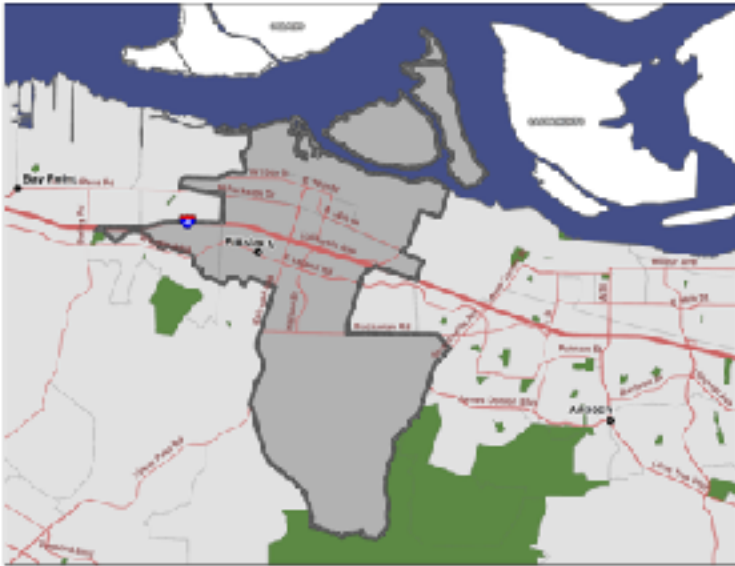
- **Bay Point (unincorporated) Municipal Advisory Committee:** Saima Shah, Eva Garcia, Lupe Lopez Garcia, Marcia Lessley, Debra Mason, Sterling Stevenson, Charles Tremaine
- **County Supervisor:** Federal Glover
- **State Senator:** Steve Glazer (District 7)
- **State Assembly Member:** Timothy Grayson (District 14)
- **Congress Representative:** Mark DeSaulnier (District 11)



Voting age citizens	Registered voters	Actual voters	Voting rate for registered voters	Voting rate for citizens
17,381	11,296	7,876	70%	45%

Pittsburg Area

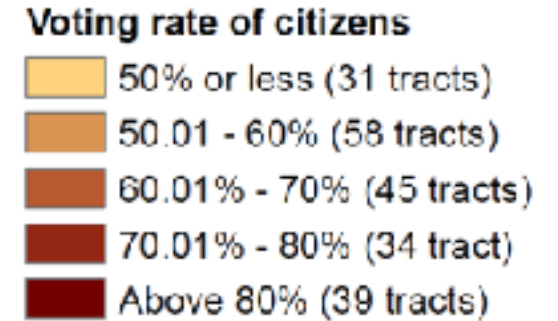
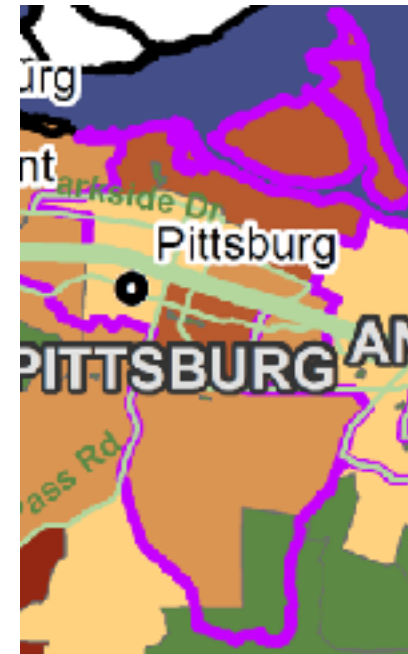
Partial area of Pittsburg



	Pittsburg Area	County Total
Total population in 2017	41,247	1,123,678
Households with children	36%	33%
Single-parent households	32%	18%
Renters	47%	34%
On probation	4.7%	2.4%
25 yrs old with less than college degree	48%	29%
Foreign born	30%	24%
Without health insurance	11%	7%
Earning less than \$50,000 per year	41%	29%
Black	20%	8%
Latino	42%	24%
Asian	13%	16%

Pittsburg Area

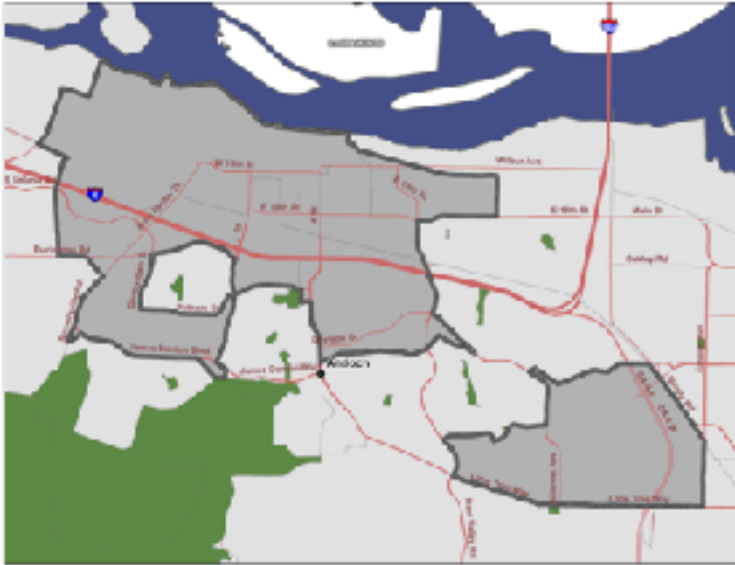
- **Pittsburg Mayor:** Juan Antonio Banales
- **Pittsburg City Council:** Jelani Killings, Merl Craft, Holland Barrett White, Shanelle Scales-Preston
- **County Supervisor:** Federal Glover
- **State Senator:** Steve Glazer (District 7)
- **State Assembly Member:** split between Jim Frazier (District 11) and Timothy Grayson (District 14)
- **Congress Representative:** Mark DeSaulnier (District 11)



Voting age citizens	Registered voters	Actual voters	Voting rate for registered voters	Voting rate for citizens
24,839	18,335	13,145	72%	53%

Antioch Area

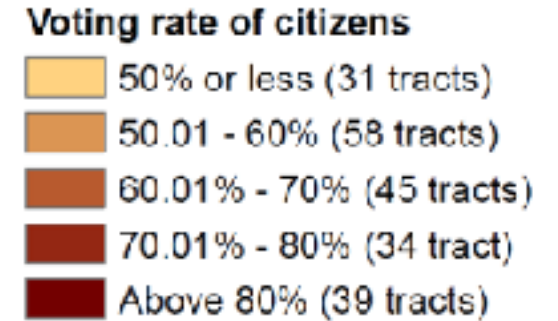
Most of City of Antioch



	Antioch	County Total
Total population in 2017	54,912	1,123,678
Households with children	40%	33%
Single-parent households	29%	18%
Renters	53%	34%
On probation	4.5%	2.4%
25 yrs old with less than college degree	49%	29%
Foreign born	22%	24%
Without health insurance	11%	7%
Earning less than \$50,000 per year	45%	29%
Black	19%	8%
Latino	39%	24%

Antioch Area

- **Antioch Mayor:** Sean Wright
- **Antioch City Council:** Joy Motts, Lamar Thorpe, Lori Ogorchock, Monica Wilson
- **County Supervisor:** Federal Glover
- **State Senator:** Steve Glazer (District 7)
- **State Assembly Member:** Jim Frazier (District 11)
- **Congress Representative:** Mark DeSaulnier (District 11)



Voting age citizens	Registered voters	Actual voters	Voting rate for registered voters	Voting rate for citizens
33,313	23,541	16,333	69%	49%