

Institutional Student Learning Outcomes (ISLO) Update

November 15, 2021

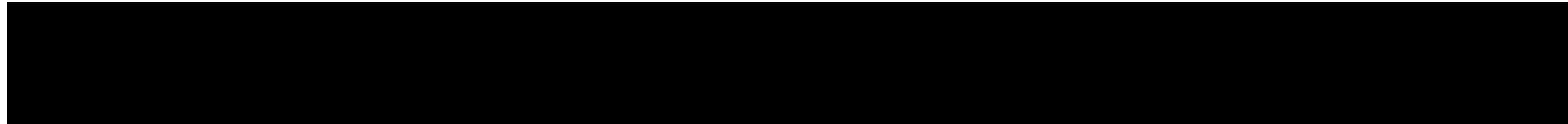
**College Assembly
From ISLO Core Group**

Mission

Los Medanos College provides our community with equitable access to educational opportunities and support services that empower students to achieve their academic and career goals in a diverse and inclusive learning environment.

Institutional Student Learning Outcomes (ISLOs) Core Group Proposal

Context & Background



SGC

1/27/2021

- Info on ISLOs presented to/discussed by SGC
- SGC asked the Planning Committee to devise a proposal to present to SGC for developing ISLOs

SGC

2/10/2021

- ISLOs Core Group proposal presented to SGC
- Proposal approved by SGC

SGC

2/24/2021

- Addendum to include GE rep on the Core Group considered by SGC, but tabled pending further discussion
- SGC asked that Core Group be put on hold

Planning Committee – 2/4/21

- Planning Committee reviewed and accepted the ISLOs Core Group membership, charges and timeline. The information was forwarded to SGC.

Outreach to Core Group members

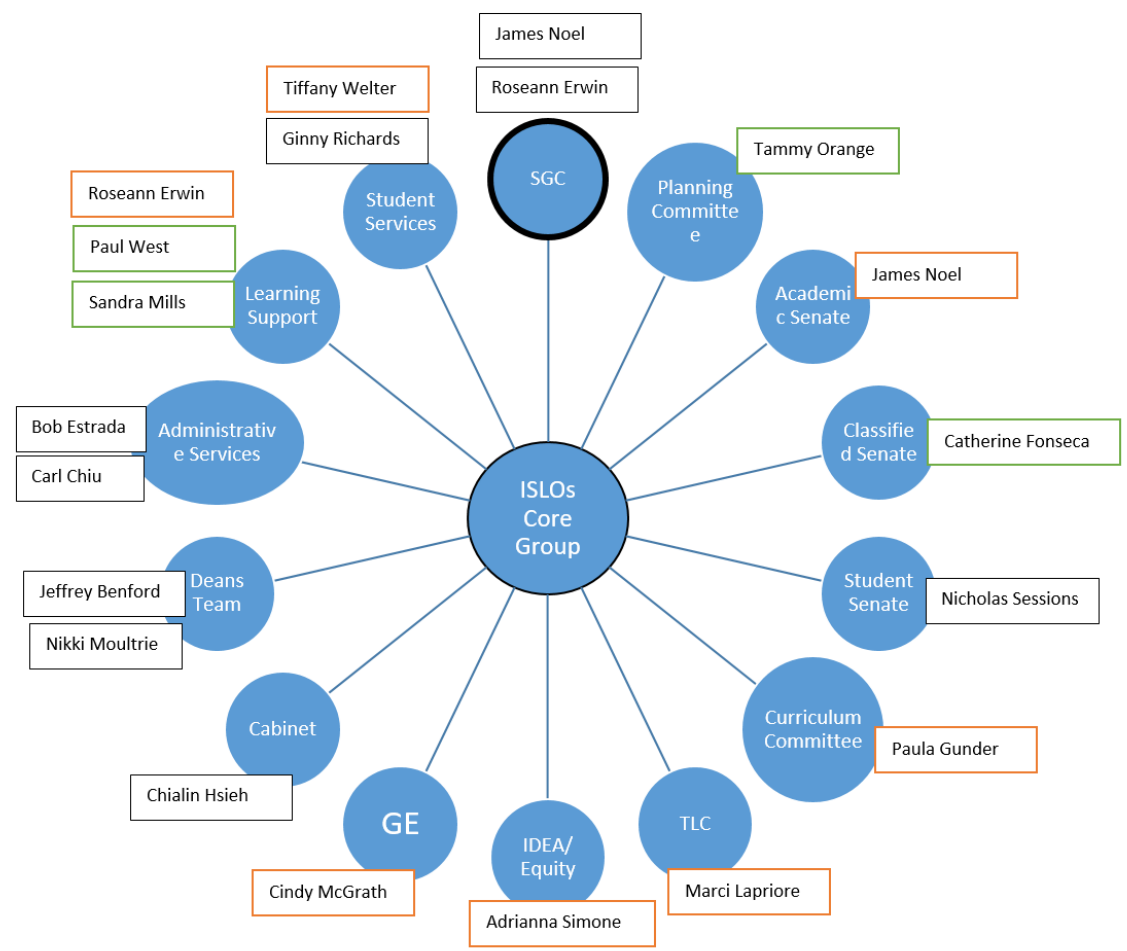
Received feedback from TLC to add GE to the Core Group: added GE rep to the Core Group membership
 2/17 – Reached out to Core Group members, including GE
 2/24 – Scheduled kick-off meeting *(15 members indicated availability to attend)*

Communication between Academic, Classified, and Student Senate Leaders

SGC has appointed the Planning Committee to establish an ISLOs Core Group to build on work already in place and to refine and enhance LMC's ISLOs by May 2021.

1. Charges:
 - a. Define of LMC's ISLOs
 - b. Embrace ACCJC Standard IIA11
 - c. Be mindful that ISLOs can be assessed/measured
 - d. Establish ISLOs by May 2021
 - e. Make recommendations to SGC
2. Timeline
 - a. Feb 2021: Establish Core Group
 - b. March 2021: Definition of LMC's ISLOs
 - c. April 2021: Draft ISLOs established (College Assembly, April 12 or 26?)
 - d. May 2021: Review and feedback from college community
 - e. August 2021: Review and feedback from college community (Opening day)
 - f. Sept 2021: Finalize ISLOs
 - g. Oct 2021: Senates and SGC approval
3. Meeting Schedule:
 - a. 6 times for Spring 2021 (February, March, April)
 - b. 2 times in Fall 2021 (August and Sept)
4. Membership: (chair-Chialin; staff-BethAnn)
 1. Curriculum Committee chair/designated member
 2. TLC chair/designated member
 3. Academic Senate President/designated member
 4. Classified Senate President/designated member
 5. Student Senate President/designated member
 6. Planning chair/designated member
 7. Equity/IDEA chair/designated member
 8. Instructional Dean
 9. Student Services Dean
 10. Administrative Services—IT
 11. Administrative Services—Book Store
 12. Student Services staff
 13. Student Services LSO
 14. Learning Support—Library
 15. Learning Support—Tutoring
 16. Learning Support—Labs
 17. GE Committee chair/designated member

5. Reporting structure



ISLO Core Group's Charge

6

- ❑ Define LMC's ISLO
- ❑ Embrace ACCJC Standard IIA11
- ❑ Be mindful that ISLOs can be assessed/measured
- ❑ Establish ISLOs by May 2021
- ❑ Make recommendations to SGC

Meeting

7

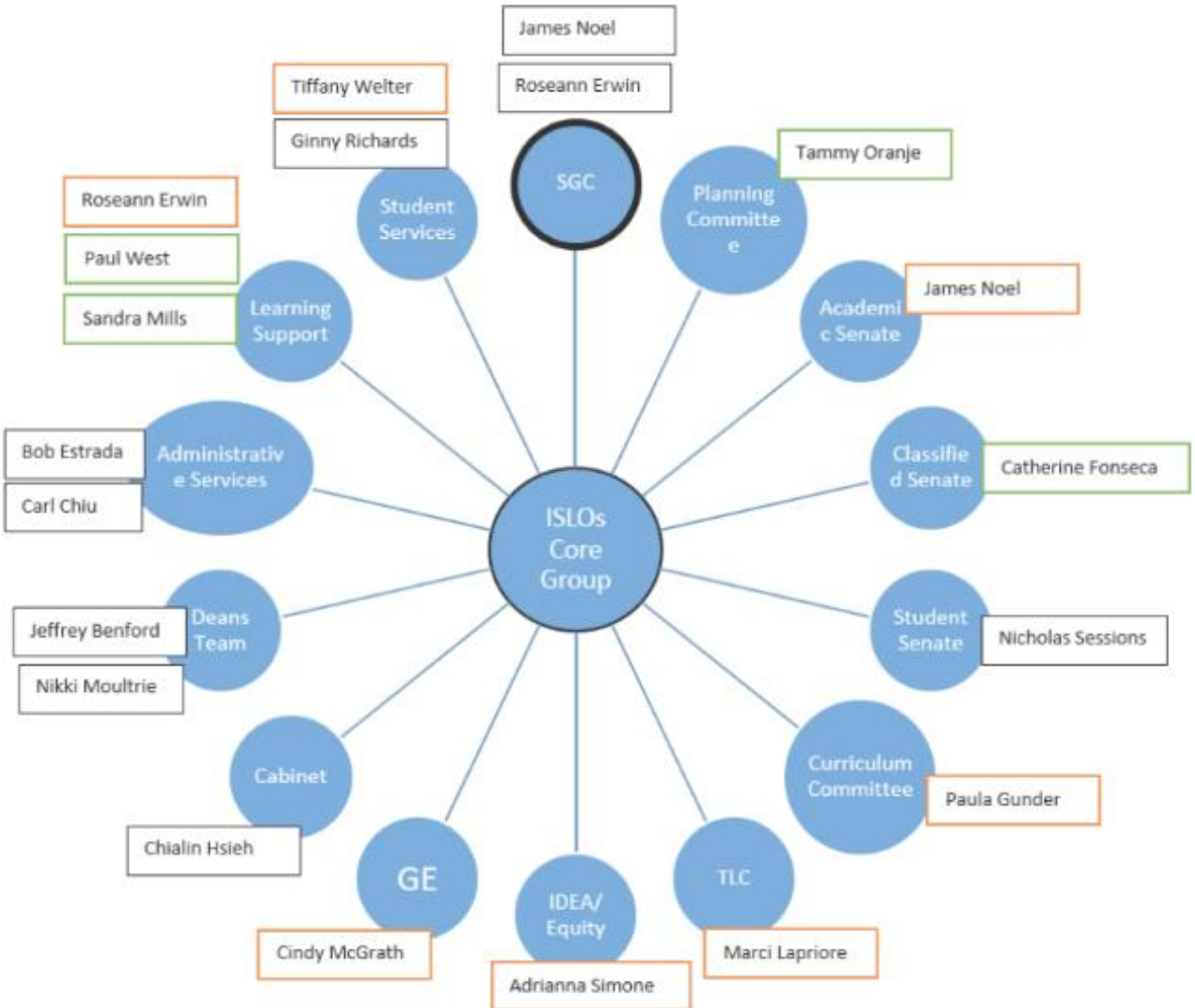
- Every 2nd and 4th Thursdays
 - April 8 and 22, 2021
 - May 6 and 20, 2021
 - Sept 10 and 23, 2021
 - October 14 and 28, 2021
 - SGC 1st Read November 10, 2021
 - College Assembly November 15, 2021
 - November 18, 2021

Core Group Members' Role

8

- ▣ Communicate with their constituencies
- ▣ Receive feedback from their constituencies
- ▣ Incorporate feedback to:
 - a. ISLO Definition
 - b. ISLO Category
 - c. ISLO Description
- ▣ Consensus on each of the above.

ISLO Core Group Membership



ISLO Definition

Institutional Student Learning Outcomes (ISLOs) identify the knowledge, skills, and abilities students will acquire, strengthen, and apply throughout their journey at Los Medanos College and beyond. With the support of LMC stakeholders, students connect their cultural wealth to well-rounded learning experiences that support them to thrive in different community spaces.

All college employees are educators and promote a campus-wide collaborative effort that impacts student learning experiences by identifying equitable strategies to improve college culture, pedagogy, processes, services, programs, and operations.

~Approved by ISLO Core group on 9.10.2021

Development of the ISLO Category

1. Studied LMC ISER IIA11 standards and response
2. Studied LMC GESLO
3. Not all programs will need to assess to all ISLOs.
 - ▣ Instructional Programs can continue using and assessing GE SLOs (which are incorporated where applicable to an ISLO);
 - ▣ Identifiers on which ISLOs are predominantly Instructional (i.e. GE SLO) and which ISLOs are predominantly for Student Services, Administrative, Instructional Support Services will be included.

ISLO Category

12

- Communication Competency
- Critical Thinking and Information Competency
- Digital Fluency
- Scientific Inquiry and Quantitative Reasoning
- Ethical Insight and Diverse Perspective
- Personal, Academic, and Career Development

~ Approved by ISLO Core group on 9.27.2021

ISLO Statement

13

Upon completion of their journey at Los Medanos College, a student will be able to:

Communication Competency

- ▣ Read critically, collaborate effectively, and communicate clearly in different modalities as a writer, speaker, visual communicator, and/or performer.

Critical Thinking and Information Competency

- ▣ Think critically, engage in analytic inquiry, use search methodology and research tools to access, identify and evaluate information and its sources.

Digital Fluency

- ▣ Apply technology competency skills to navigate the college systems, including the use of appropriate digital tools to successfully achieve academic and career goals.

OR

- ▣ Apply technology competency skills to successfully achieve academic and career goals.

~ Approved by ISLO Core group on 10.14.2021

ISLO Statement

Upon completion of their journey at Los Medanos College, a student will be able to:

Scientific Inquiry and Quantitative Reasoning

- ▣ Apply scientific inquiry, quantitative reasoning, and/or mathematical principles to a variety of lived experiences.

Ethnical Insight and Diverse Perspective

- ▣ Explore diverse social, multicultural, and global perspectives, and address ethical problems with a clear understanding of personal, social, and civic responsibilities toward principles of equity.

Personal, Academic and Career development

- ▣ Assess and value one's own achievements, cultural wealth, and well-being, and cultivate resources for personal, educational, and career growth.

Draft ISLO Recommendation

15

- <https://www.losmedanos.edu/planning/DRAFTInstitutionalStudentLearningOutcomesRecommendations11.8.21.pdf>

Next Step

16

- November 18, 2021
 - Incorporate feedback from SGC and College Assembly
- December 8, 2021
 - Final draft ISLO Statement Recommendation to SGC
- Implementation of ISLOs
 - Core Group Recommendation to SGC to determine Who, What, How, When, and How Often to assess (i.e., Teaching and Learning Committee, SSLSO, etc.)

Progress Documentation and References

17

- <https://app.mural.co/t/4cd5443/m/4cd5443/1617852014876/b97f84ba182c2df438bb64672c1786abfc76a742?sender=ub11210ce9142823513f81494>
- [SGC 1/27/2021](#)
- [Planning Committee 2/4/2021](#)
- [SGC 2/10/2021](#)

Thank You