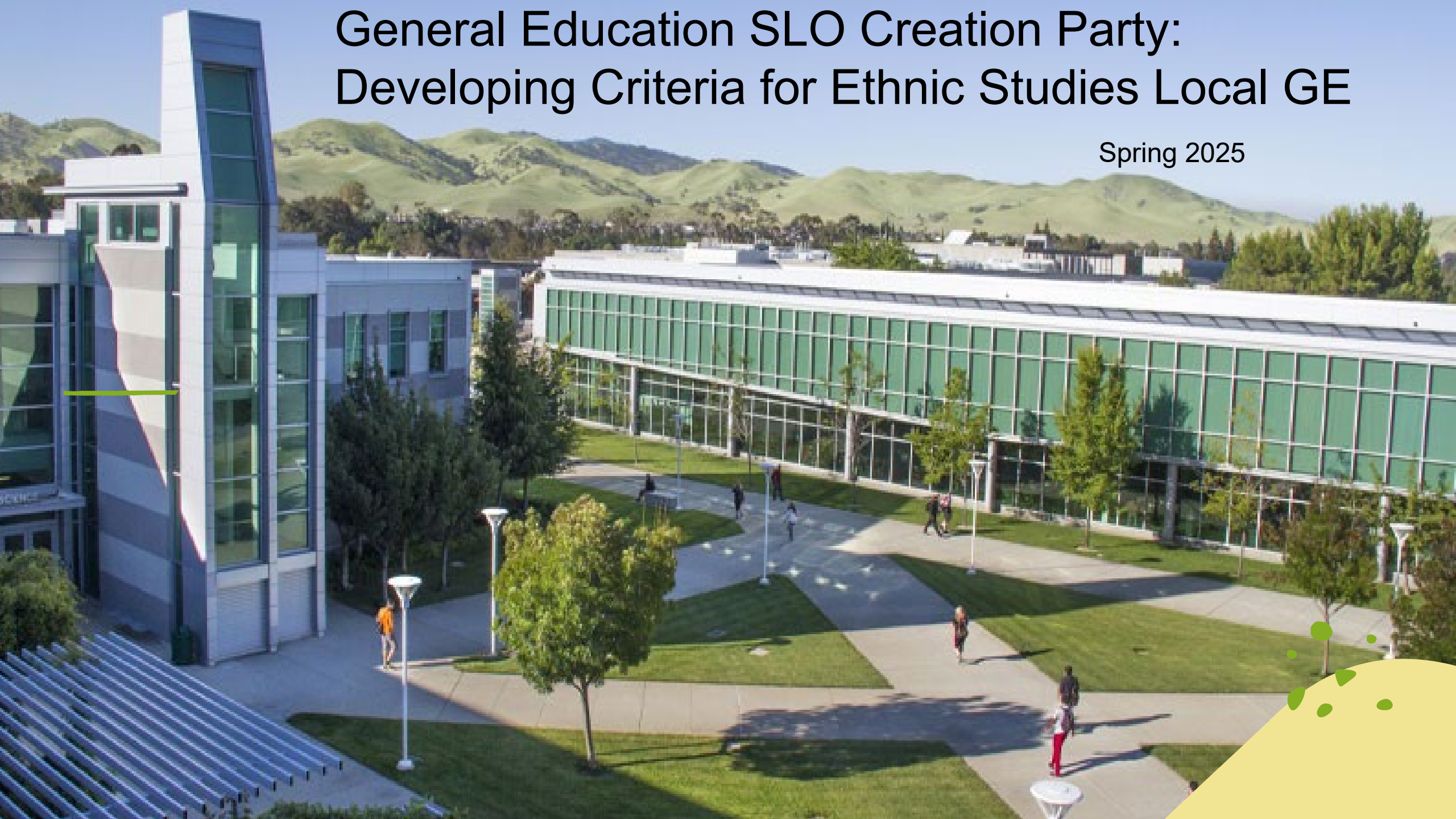


General Education SLO Creation Party: Developing Criteria for Ethnic Studies Local GE

Spring 2025



Agenda

- Icebreaker/welcome (10 minutes)
- Comparisons of old and new GE models (15 minutes)
- Workgroup/Breakout on Ethnic Studies, Diverse Perspectives, and Quantitative Reasoning (30 minutes)
- Share-out from workgroups (30 minutes)
- Questions and additional work moving forward (15 minutes)

GE Icebreaker



Please tell us your name,
department, AND why
general education is
important for students?
You can also share your
favorite GE class from
your undergraduate
education

Current Local GE Pattern

LR: Language and Rationality (6 units)

Complete two courses:

- English Composition
- Communication and Analytical Thinking

NS: Natural Sciences (3 units)

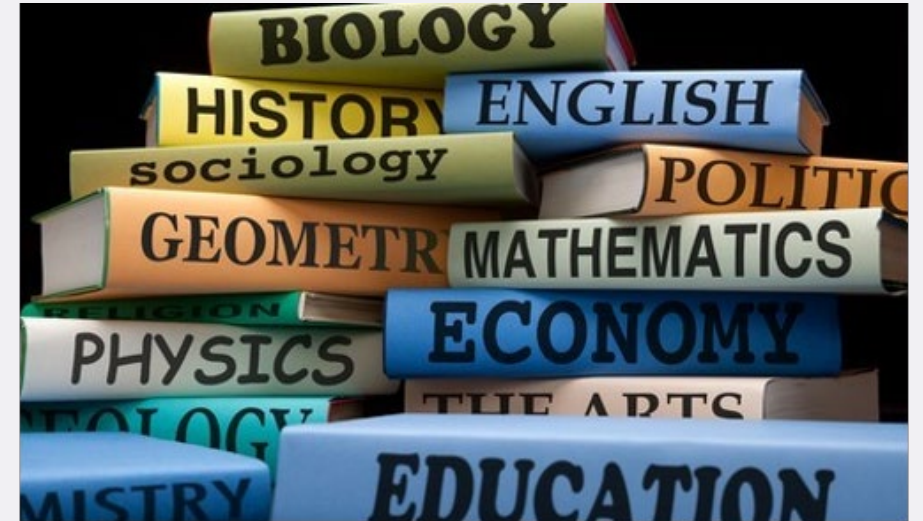
AH: Arts and Humanities (3 units)

SB: Social and Behavioral Sciences (3 units)

EM: Ethnic/Multicultural Studies (3 units)

Total: 18 Units

Catalog ends this year: 2024-2025



GE Changes!

- Title 5 Changes
- Changes between current and local GE Patterns
- CalGETC Changes



Old GE Model vs. New GE Model

LR: Language and Rationality (6 units)

Complete 2 courses

LR1: English Composition

LR2: Communication and Analytical Thinking

Complete one course from LR2a or LR2b.

- LR2a: Communication OR
- LR2b: Analytical Thinking (Math Comprehension)

NS: Natural Sciences (3 units)

AH: Arts and Humanities (3 units)

SB: Social and Behavioral Sciences (3 units)

EM: Ethnic/Multicultural Studies (3 units)

Elective Units for GE Transfer

Area 1: English Composition, Oral Communication, and Critical Thinking (6 units)

1A: English composition (3 units)

2A: Oral Communication and Critical Thinking (3 units)

Area 2: Mathematical Concepts and Quantitative Reasoning (3 units)

Area 3: Arts and Humanities (3 units)

Area 4: Social and Behavioral Sciences (3 units)

Area 5: Natural Sciences (3 units)

Area 6: Ethnic Studies (3 units)


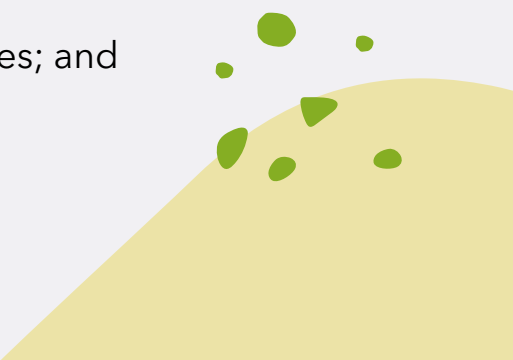
Area 7: Diverse Perspective (3 units)

§ 55061. Associate Degree Course Requirements. District governing boards may only approve associate degrees that meet the following course requirements:

- (a) A minimum of 60 semester units (90 quarter units) of degree-applicable lower division credit courses, including courses that apply to the major or area of emphasis in career technical fields and courses in composition, reading, and mathematics or quantitative reasoning not more than one level below transfer. Below transfer level course requirements must align with Education Code section 78213.
- (b) (b) A minimum of 18 semester units (27 quarter units) of focused study in a major or interdisciplinary area of emphasis.
 - (1) A “major” is a focused program of study within a specific discipline, which may include some coursework outside the primary discipline. Programs designed to provide transfer preparation must be designed to meet specific lower-division requirements in comparable baccalaureate majors.
 - (2) An “area of emphasis” is an interdisciplinary program of study encompassing a broad range of courses from multiple related academic disciplines, providing the student with an academic pathway broader than a specific major but more focused than general education.

(c) A minimum of 21 semester units (28 – 31.5 quarter units) of general education in the areas described below.

- (1) English Composition, Oral Communication, and Critical Thinking (minimum of 6 semester/8 quarter units) including:
 - (A) English Composition (minimum of 3 semester/4 quarter units). Courses fulfilling this requirement must be baccalaureate-level and include expository and argumentative writing.
 - (B) Oral Communication and Critical Thinking (minimum of 3 semester / 4 quarter units). Courses fulfilling this requirement must be baccalaureate-level and may include oral communication and critical thinking courses.
- (2) Mathematical Concepts and Quantitative Reasoning (minimum of 3 semester / 4 quarter units). Courses fulfilling this requirement must be at least college-level and may include mathematics or quantitative reasoning courses, including logic, statistics, computer languages, and related disciplines.
- (3) (3) Arts and Humanities (minimum of 3 semester / 4 quarter units). Courses in the humanities study the cultural activities and artistic expressions of human beings. Such courses develop students' awareness of how people throughout the ages and in different cultures respond to themselves and the world around them in artistic and cultural creation, and develop students' aesthetic understandings and abilities to make value judgments. Courses fulfilling this requirement may include introductory or integrative baccalaureate-level courses in the visual and performing arts, art history, foreign languages, literature, philosophy, religion, and related disciplines.

- 
- 
- (4) Social and Behavioral Sciences (minimum of 3 semester / 4 quarter units). Courses in the social and behavioral sciences focus on people as members of society and develop awareness of the methods of inquiry used by the social and behavioral sciences. They stimulate critical thinking about how people act and have acted in response to their societies and promote appreciation of how societies and social subgroups operate. Courses fulfilling this requirement may include introductory or integrative baccalaureate-level courses in cultural anthropology, cultural geography, economics, history, political science, psychology, sociology, and related disciplines.
- (5) Natural Sciences (minimum of 3 semester / 4 quarter units). Courses in the natural sciences examine the physical universe, its life forms, and its natural phenomena, helping students appreciate and understand the scientific method and the relationships between science and other human activities. Courses fulfilling this requirement may include introductory or integrative baccalaureate-level courses in astronomy, biology, chemistry, general physical science, geology, meteorology, oceanography, physical geography, physical anthropology, physics, and other scientific disciplines.
- (6) Ethnic Studies (minimum of 3 semester/4 quarter units). Courses fulfilling this requirement may include baccalaureate-level courses in the four autonomous disciplines within Ethnic Studies: Black Studies; African American Studies; Africana Studies; Native American Studies; Chicano/a/x; Latino/a/x Studies/La Raza Studies; and Asian American Studies.

Title 5 Changes & Local Degree GE Patterns

Title 5 55061

24 semester units' minimum (begins 2025 academic year)

1A = English Composition; 1 course

1B = Oral Communication and Critical Thinking; 1 course

2 = Mathematics and Quantitative Reasoning; 1 course

3 = Arts and Humanities; 1 course

4 = Social and Behavioral Sciences; 1 course

5 = Natural Sciences; 1 course

6 = Ethnic Studies; 1 course

7 = Diverse Perspectives; 1 course



CalGETC Changes

The California General Education Transfer Curriculum (Cal-GETC) is the singular general education pathway for California Community College (CCC) students to fulfill lower-division general education requirements necessary for **transfer** and admission to both the California State University (CSU) and the University of California (UC).

34 semester units' minimum.

1A = English Composition; 1 course

1B = Critical Thinking and Composition; 1 course

1C = Oral Communication; 1 course

2 = Mathematics and Quantitative Reasoning; 1 course

3 = Arts and Humanities; 2 courses, one in each area

4 = Social & Behavioral Sciences; 2 courses from different disciplines

5 = Physical and Biological Sciences; 2 courses (one with lab)

6 = Ethnic Studies; 1 course

Breakout Work

Depending on attendance, we will work as a large group or breakout into 3 teams:

1. Ethnic Studies
2. Diverse Perspectives
3. Quantitative Reasoning

YOUR TASKS:

1. Review the handout for the criteria and sample assignments. Update ones for quantitative reasoning, Ethnic Studies, and diverse perspectives. and for Print: pages 3/checklist, quantitative reasoning and diverse perspectives.

FOCUS ON:

- Title
- The actual GESLO
- Explanation
- Proposed assessment criteria
- Illustrations and examples.

Share-out from Breakout Work

Share the changes that your group worked on.

Refine the wording or identify additional work for the GE committee to focus on

Open Discussion

Questions/comments/feedback.

Work moving forward and ways that you can participate:

- Contact the GE Committee Chair, Adrianna Simone @ asimone@losmedanos.edu
- Join the GE committee!

