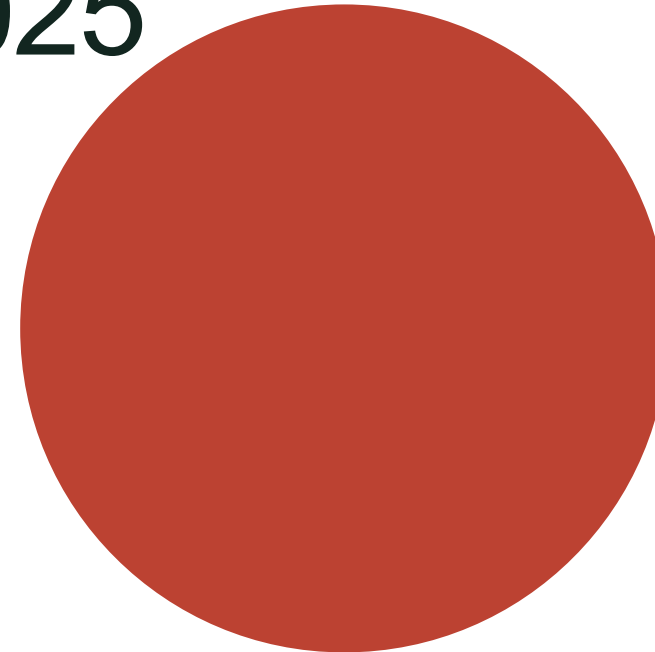

SENSE AND CCCSE SURVEYS FALL 2024 - SPRING 2025

Presentation to Academic
Senate 11.4.24



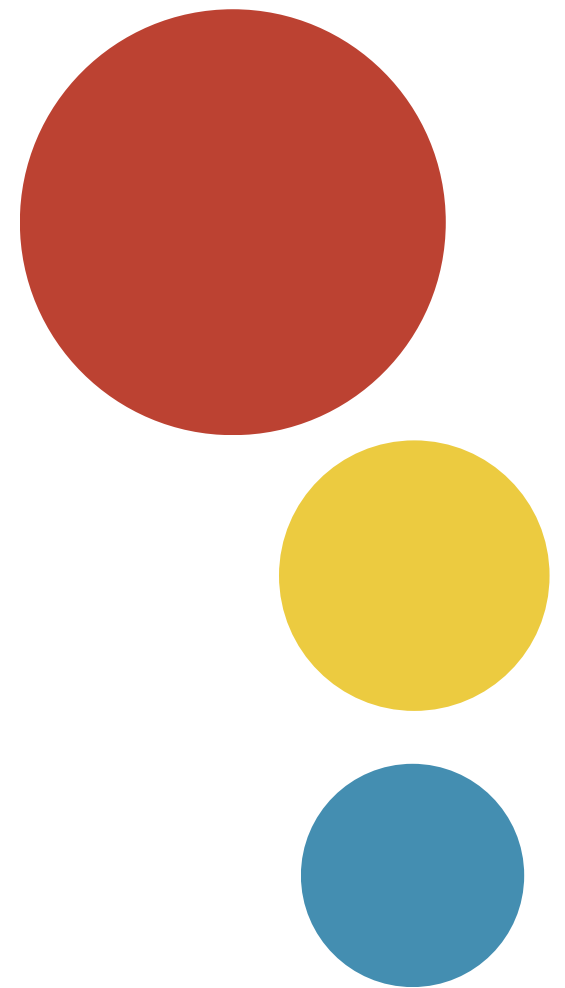
BACKGROUND

- SENSE and CCSSE are both major surveys given at hundreds of community colleges nationwide
- The survey administration is facilitated through the University of Texas at Austin
- SENSE is administered in the Fall and CCSSE in the Spring
- **LMC has been periodically administering both surveys since Fall 2012**
- LMC is currently administering SENSE this Fall 2024 and will administer CCSSE this Spring 2025



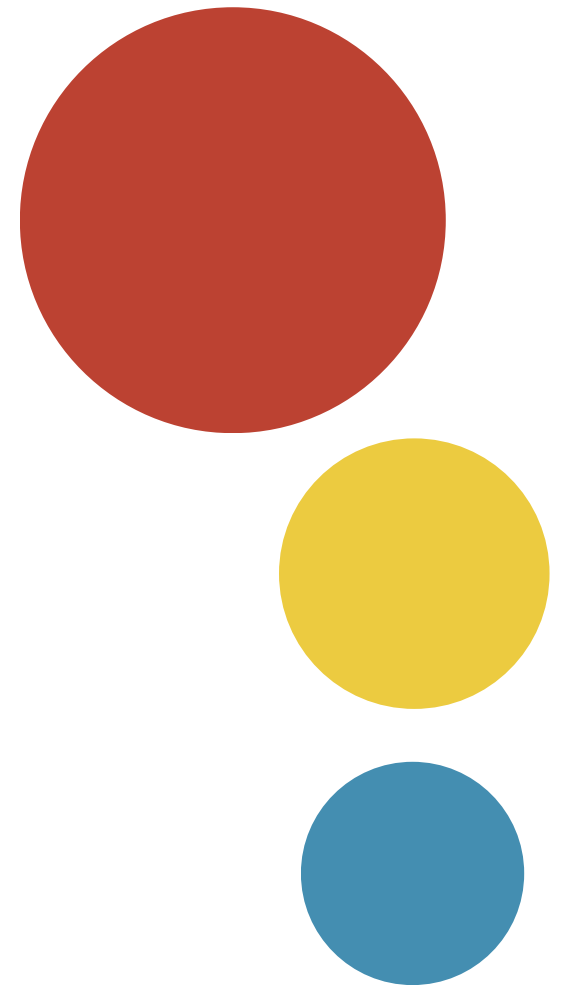
SURVEY OF ENTERING STUDENT ENGAGEMENT - SENSE

- Administered in the first portion of the Fall semester
- Is administered both in-person in courses and online
- Random sample of courses with from targeted list where entering students are most likely to enroll



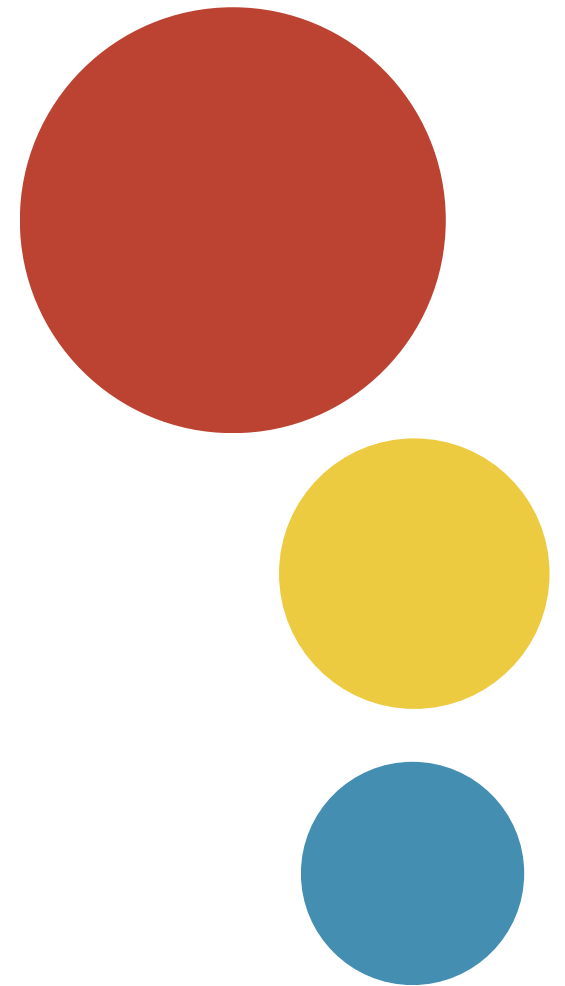
SURVEY OF ENTERING STUDENT ENGAGEMENT - SENSE

- Measures the following:
 - Early Connections
 - High Expectations and Aspirations
 - Clear Academic Plan and Pathway
 - Effective Track to College Readiness
 - Engaged Learning
 - Academic and Social Support Network



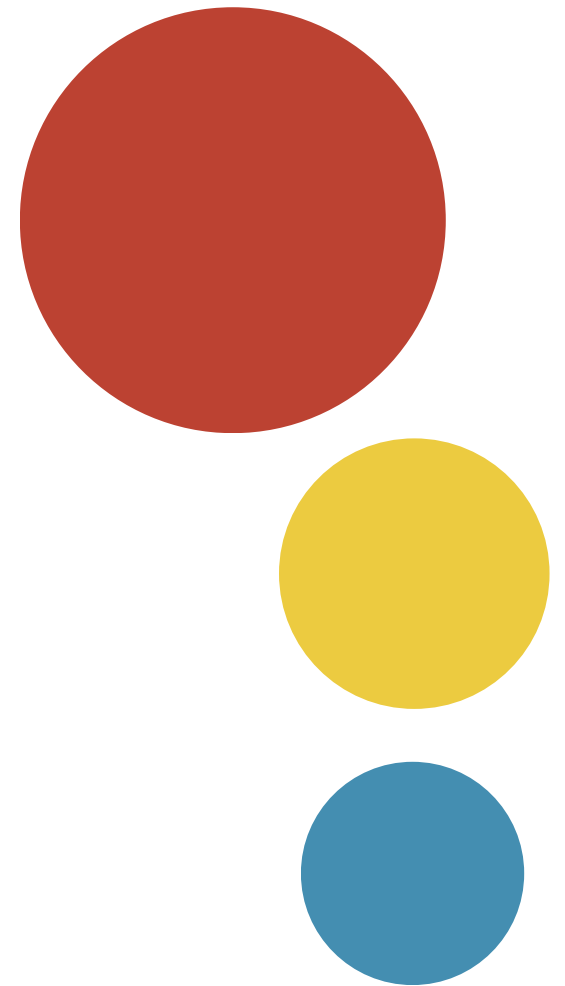
COMMUNITY COLLEGE SURVEY OF STUDENT ENGAGEMENT - CCSSE

- Administered in the first portion of the Spring semester
- Is administered both in-person in courses and online
- Random sample of courses with from targeted list where continuing students are most likely to enroll

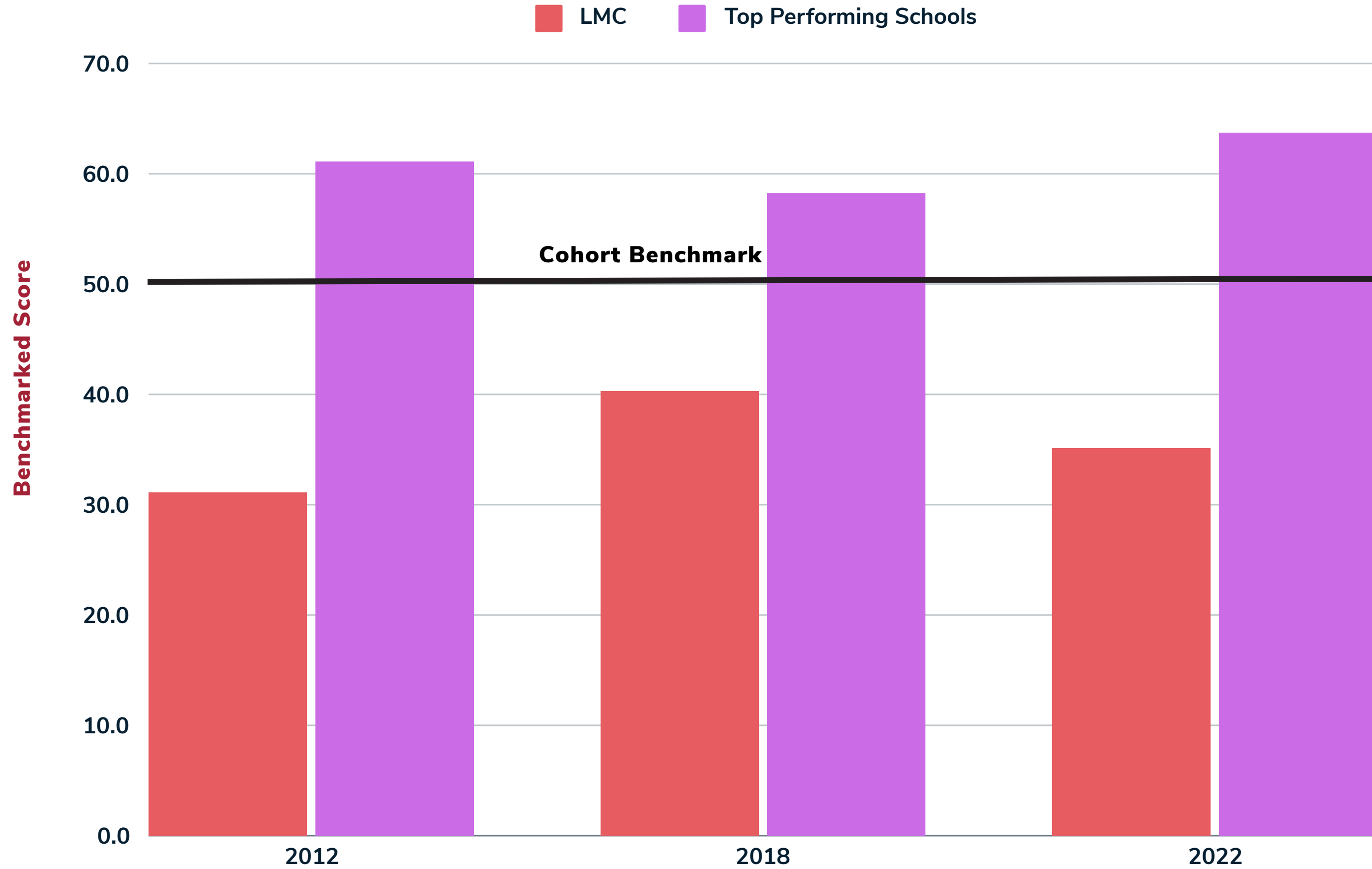


COMMUNITY COLLEGE SURVEY OF STUDENT ENGAGEMENT - CCSSE

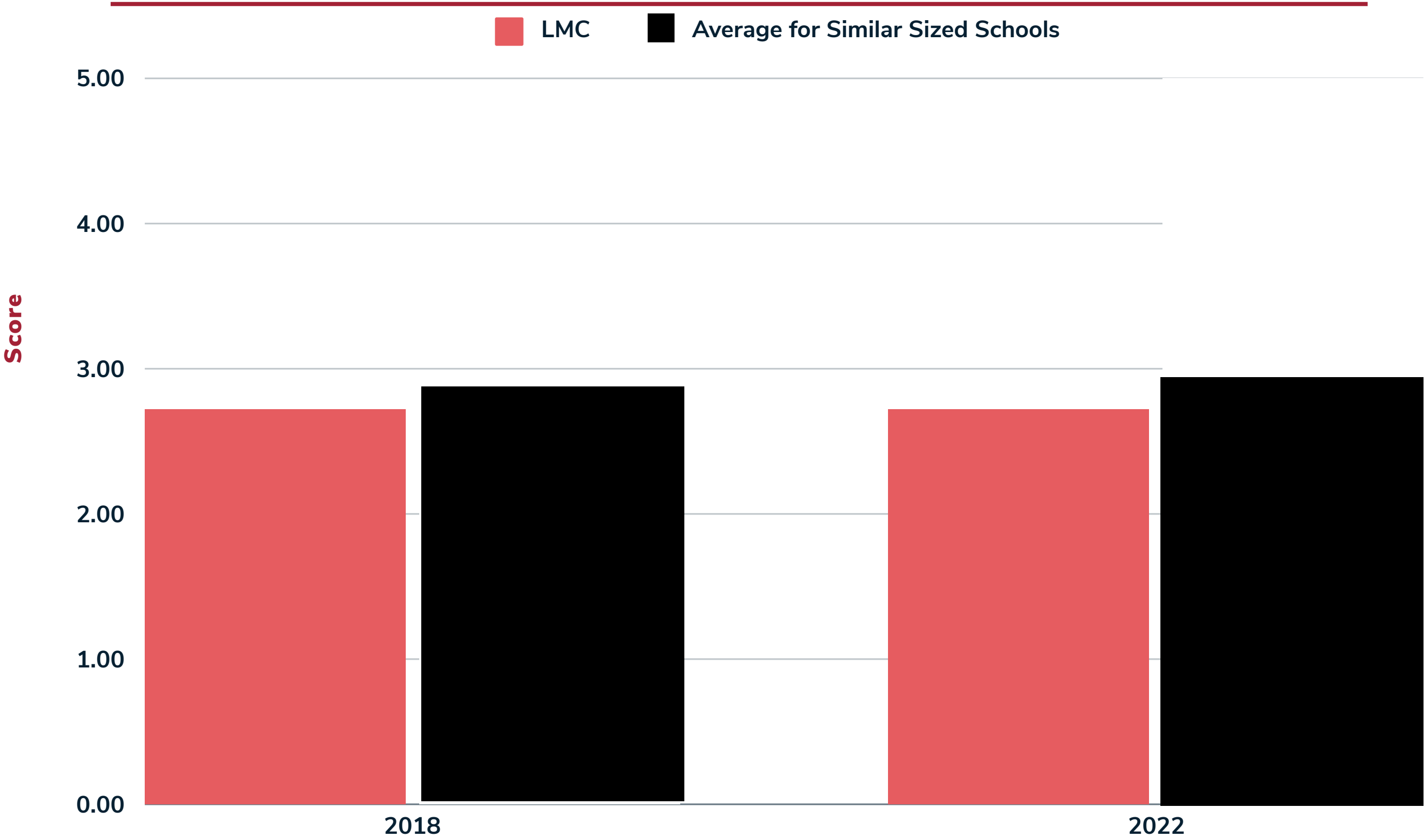
- Measures the following:
 - Active and Collaborative Learning
 - Student Effort
 - Academic Challenge
 - Student-Faculty Interaction
 - Support for Learners



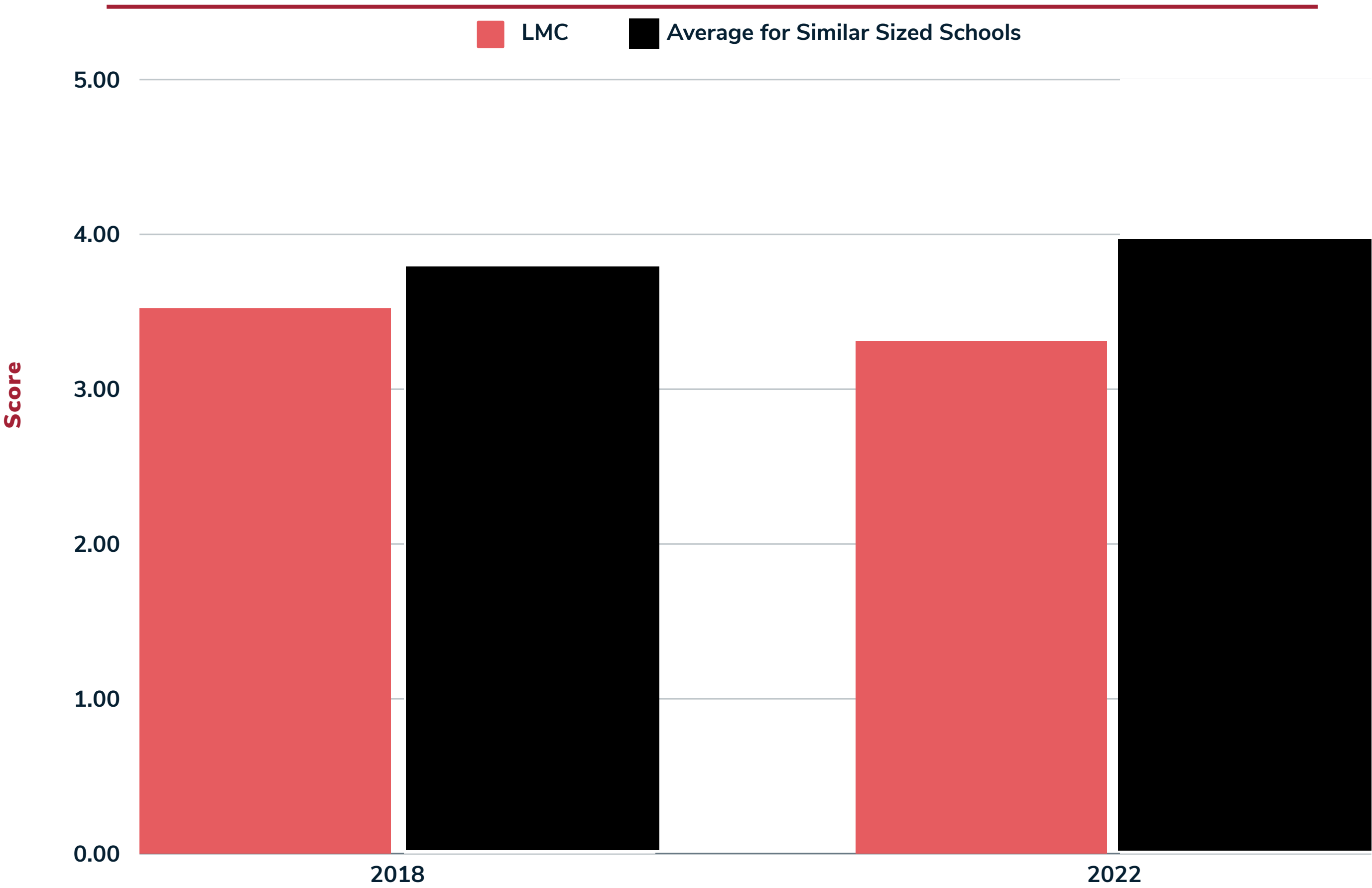
SENSE Category - Clear Academic Plan and Pathway



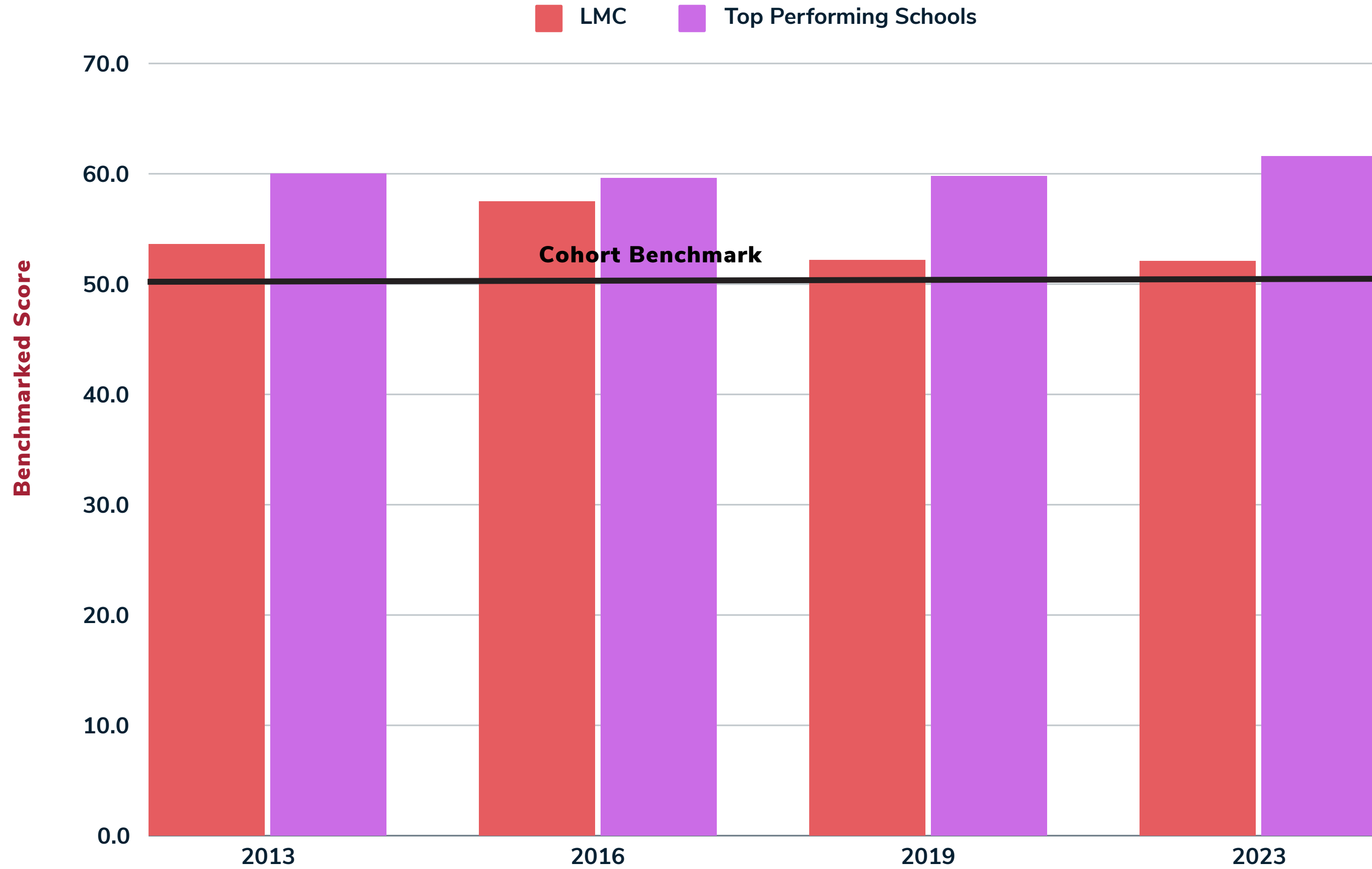
“A college staff member talked with me about my commitments outside of school (work, children, dependents, etc.) to help me figure out how many courses to take.”



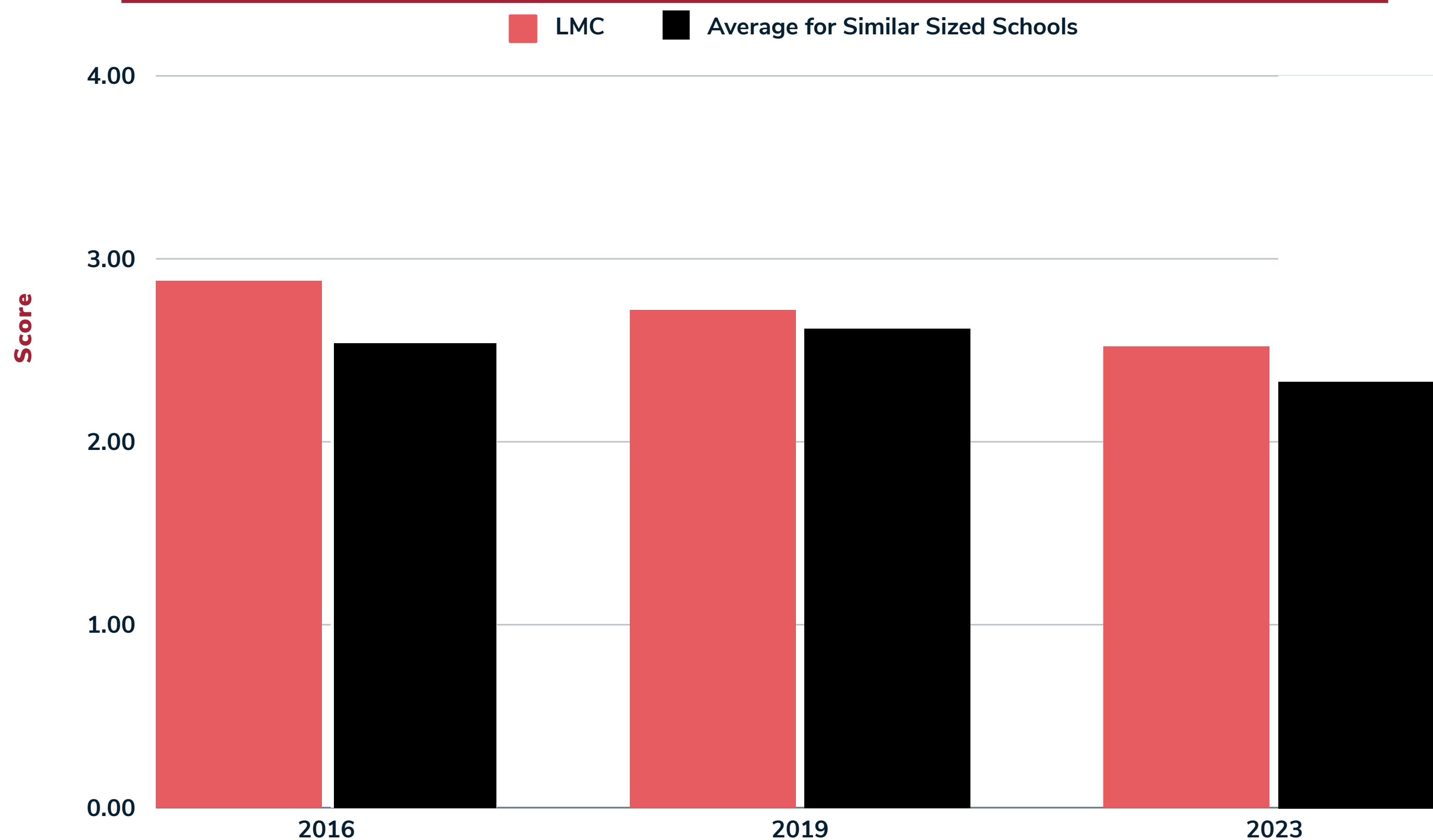
“I was able to meet with an academic advisor at times convenient for me”



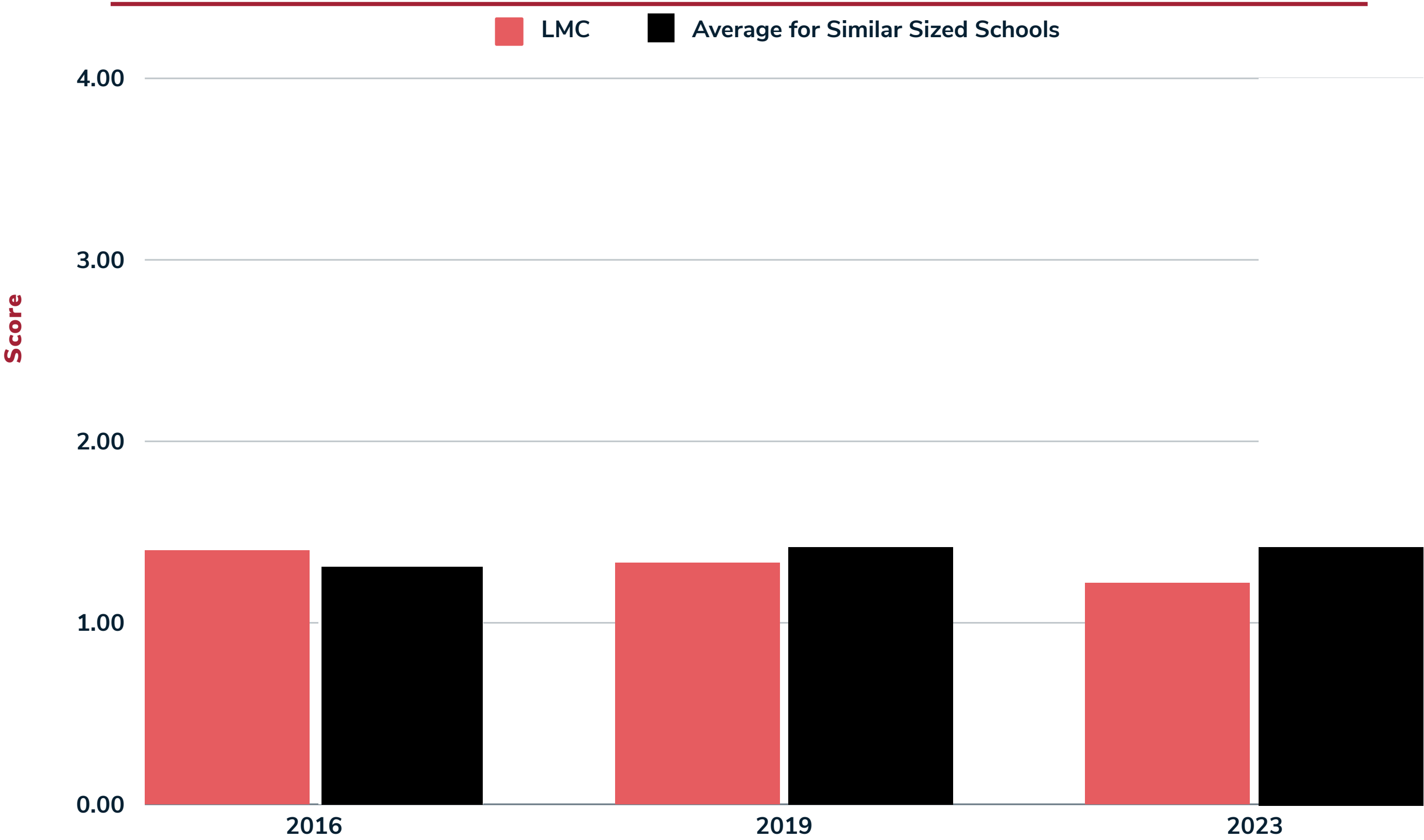
CCSSE Category - Active and Collaborative Learning



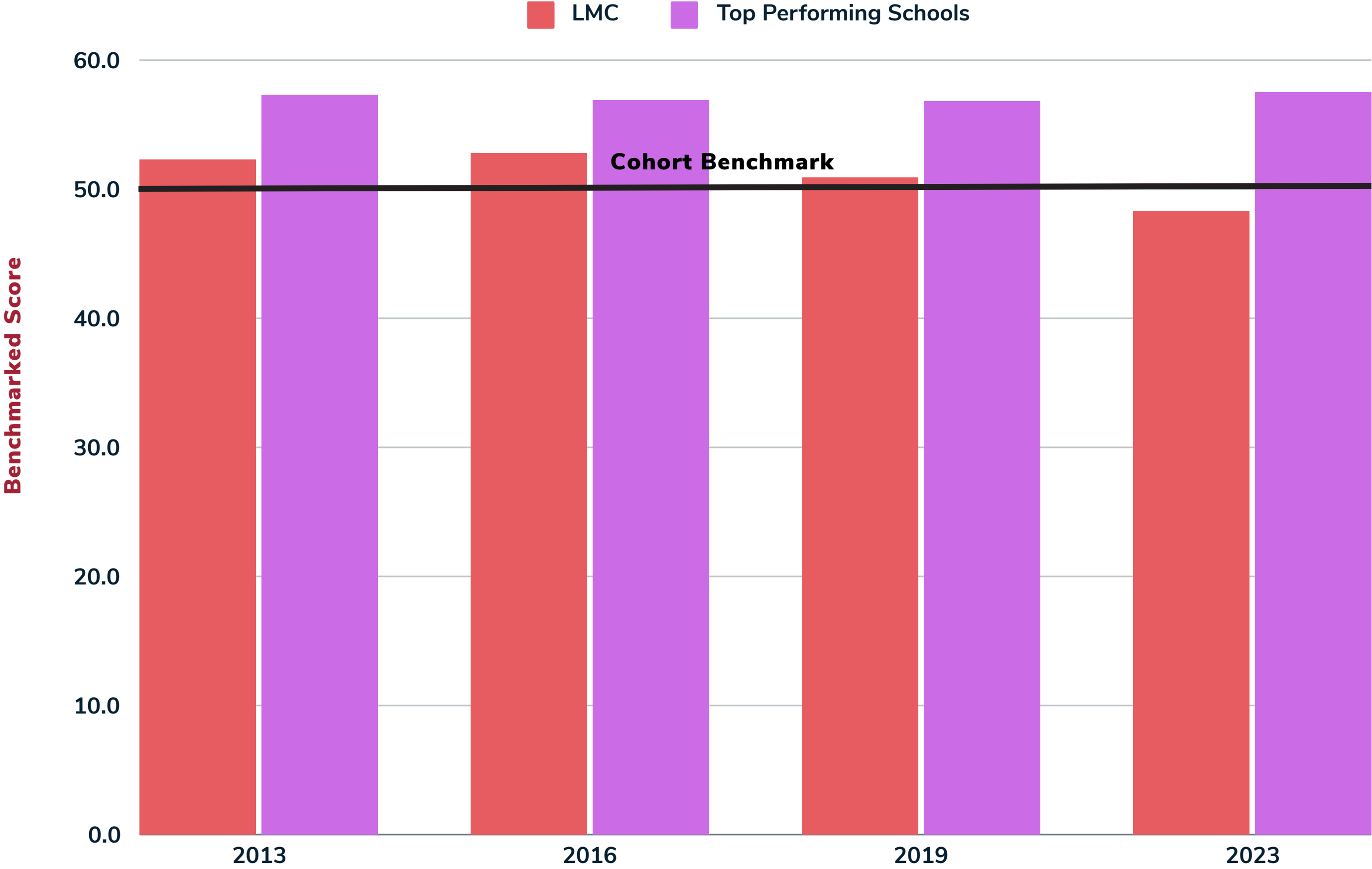
**“In your experiences at this college during the current academic year, about how often have you done each of the following:
Worked with other students on projects during class.”**



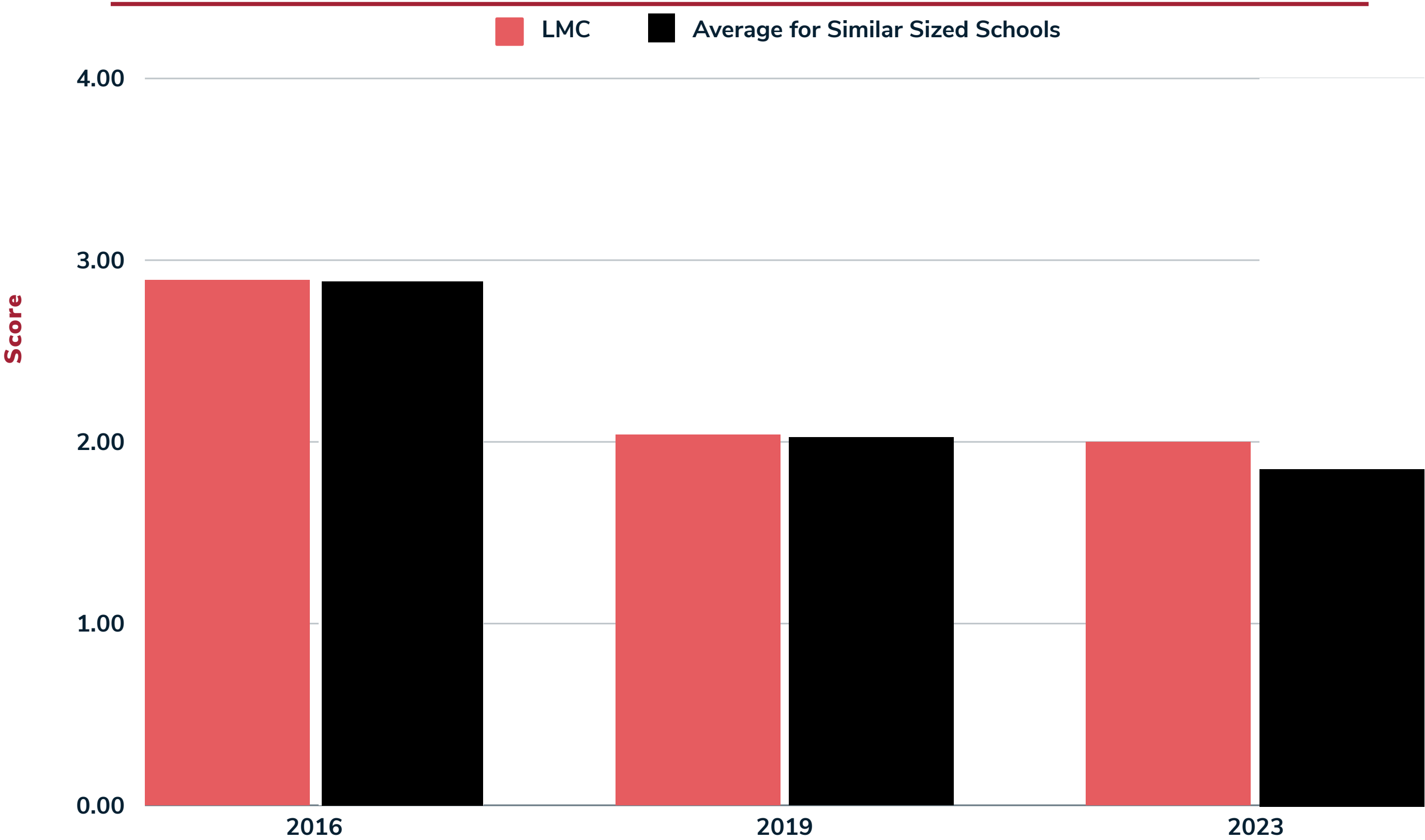
“In your experiences at this college during the current academic year, about how often have you done each of the following: Participated in a community-based project (service-learning activity) as part of a regular course.”



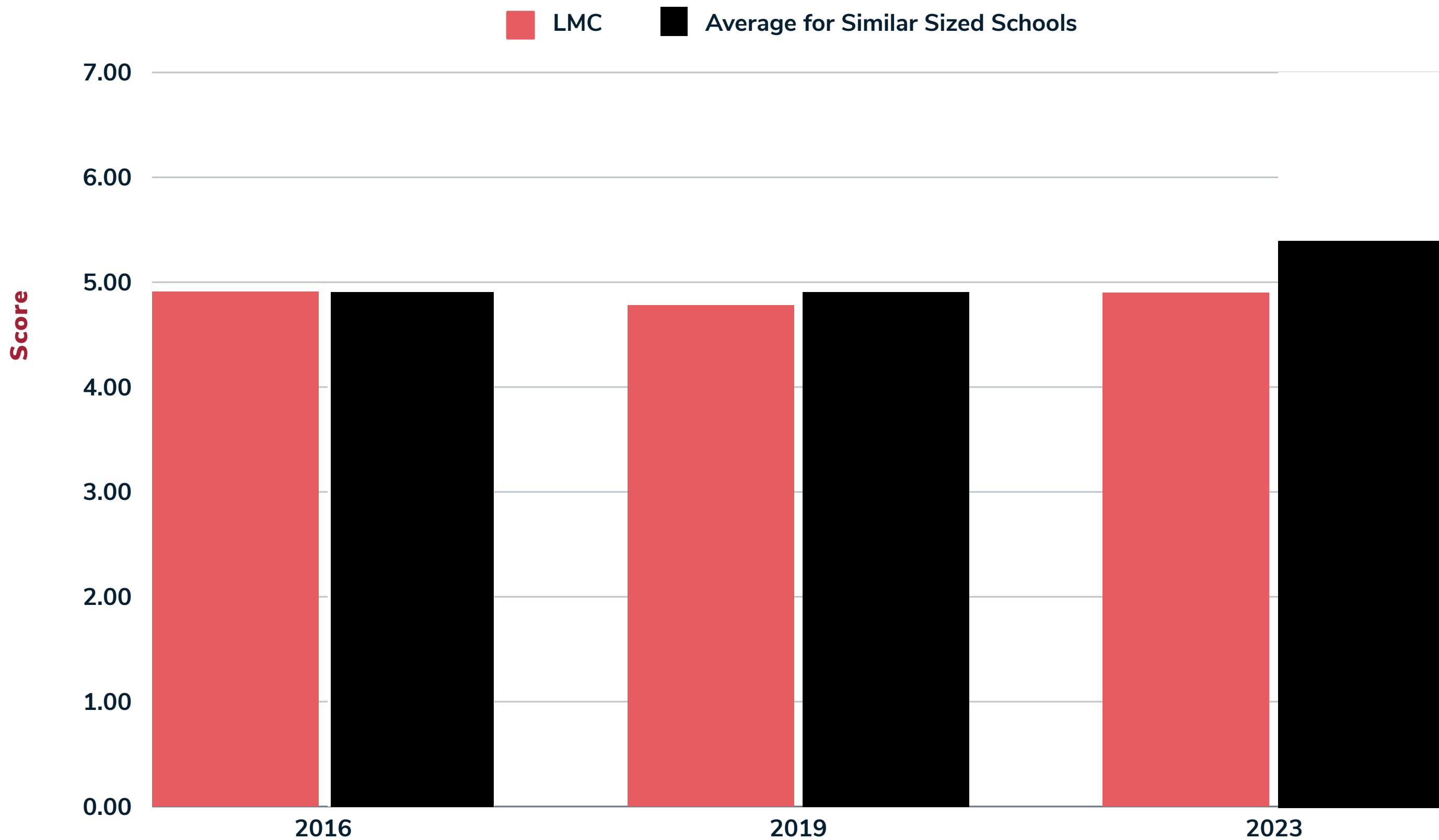
CCSSE Category - Academic Challenge



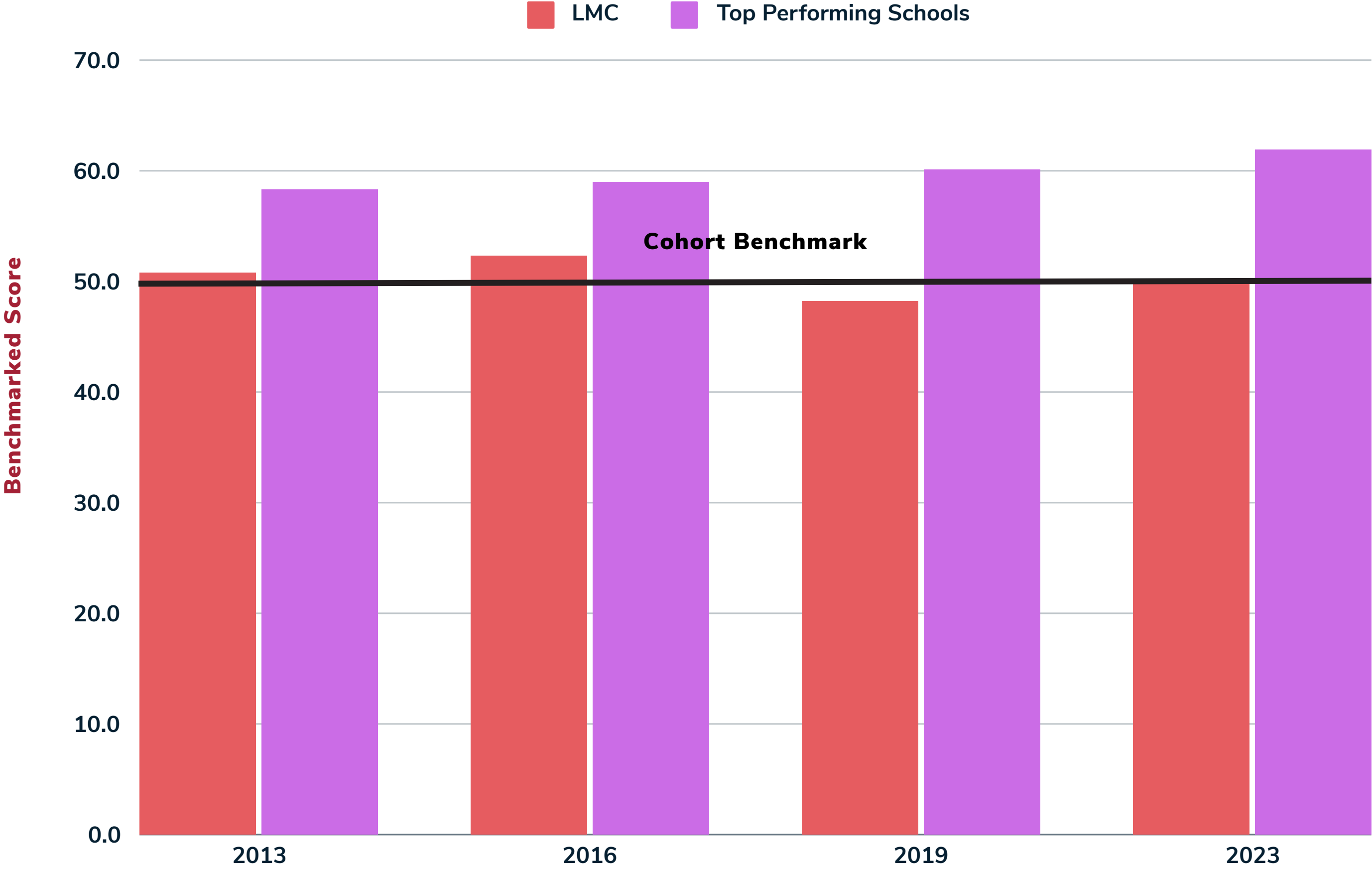
“During the current academic year, how much reading and writing have you done at this college: Number of assigned textbooks, manuals, books, or packets of course readings.”



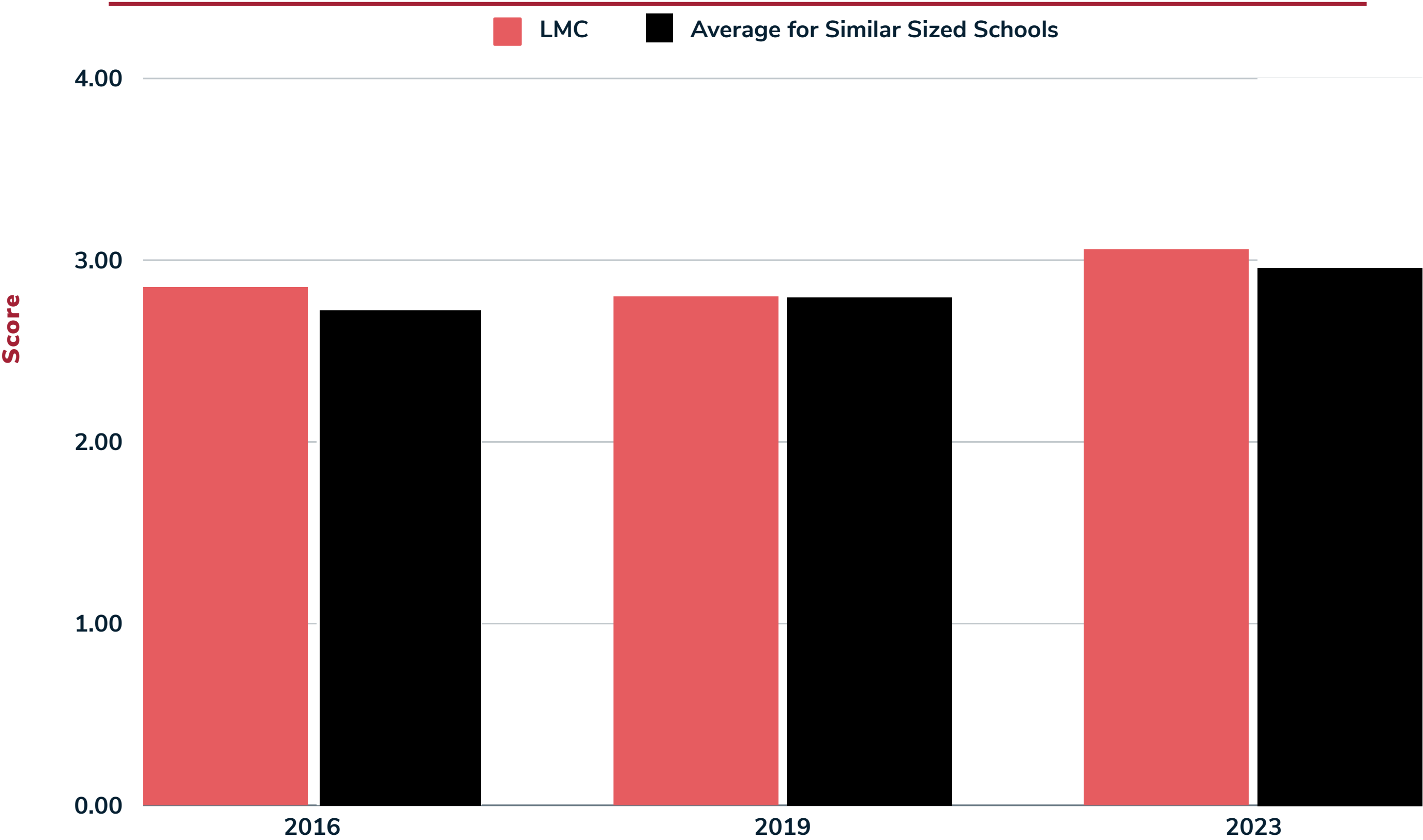
“To what extent your examinations during the current academic year have challenged you to do your best work at this college.”



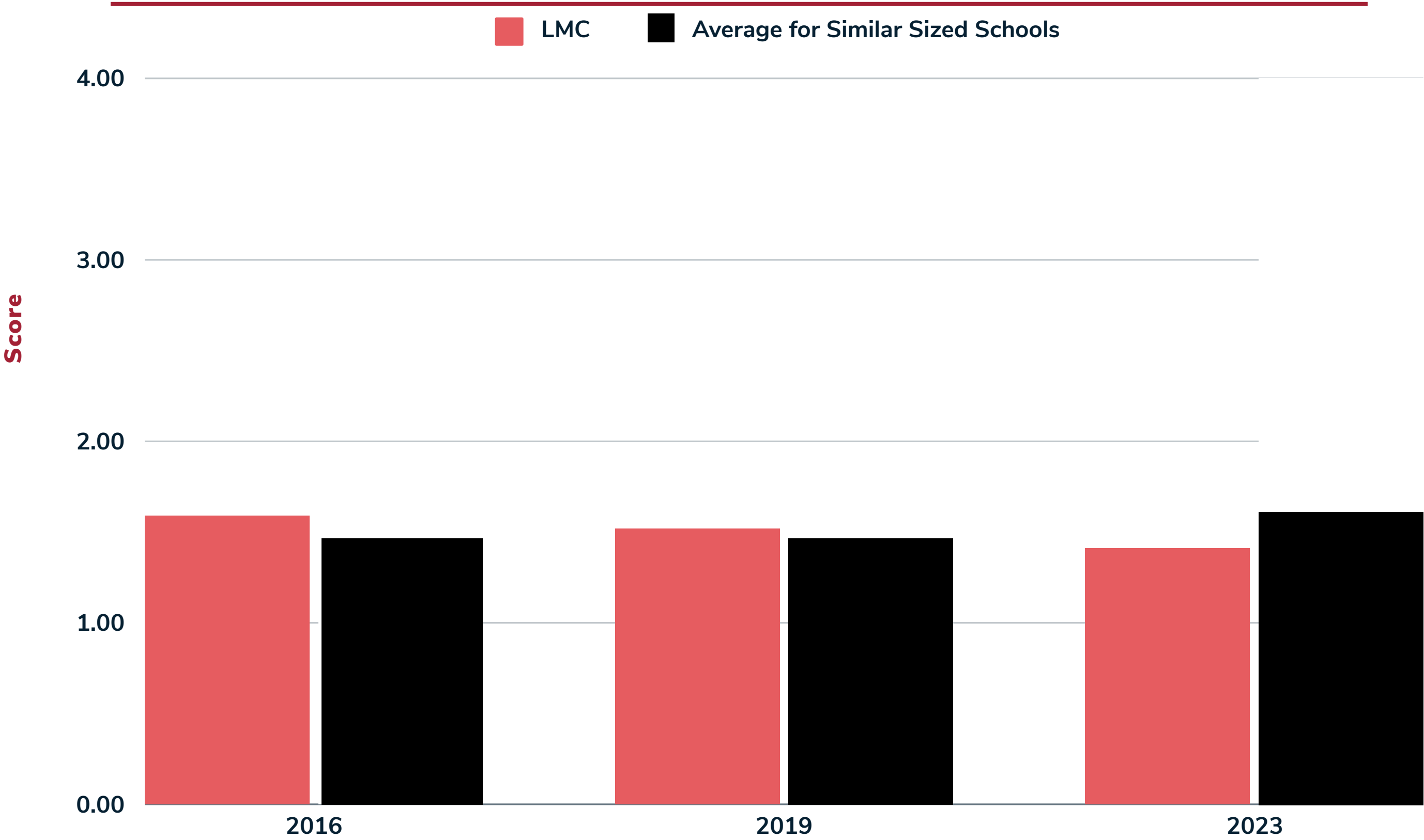
CCSSE Category - Student-Faculty Interaction



“In your experiences at this college during the current academic year, how often have you done each of the following: Received prompt feedback (written or oral) form instructors on your performance.”



“In your experiences at this college during the current academic year, how often have you done each of the following: Worked with instructors on activities other than coursework.”



TIES TO THE COLLEGE PRIORITIES

Measures are tied to priorities 1, 2, and 3

- 1. Strengthen and support effective, cross-constituent leadership to foster an anti-racist, collaborative, productive, and engaging place to learn and work. (EMP Goal #1)
- 2. Improve access to access to financial, enrollment, and academic support, and enhance social connection for students. (EMP Goal #2)
- 3. Increase Early College offerings and general enrollment. (EMP Goal #3)



USING QUESTIONS TO IMPROVE PRACTICE

- Review the questions and find those that feel most relevant to you.
- If you would like to see the results on every question by category, look for the documents titled “AllStudents_BenchmarkReport” on the data and surveys webpage.
- Which of the best practices suggested with these questions can you and your colleagues implement more regularly to support student engagement?
- <https://www.losmedanos.edu/planning/survey.aspx>

