

**Los Medanos College**

**PROGRAM PERFORMANCE PROFILE**

**Accounting**

**TOP: 0502.00**

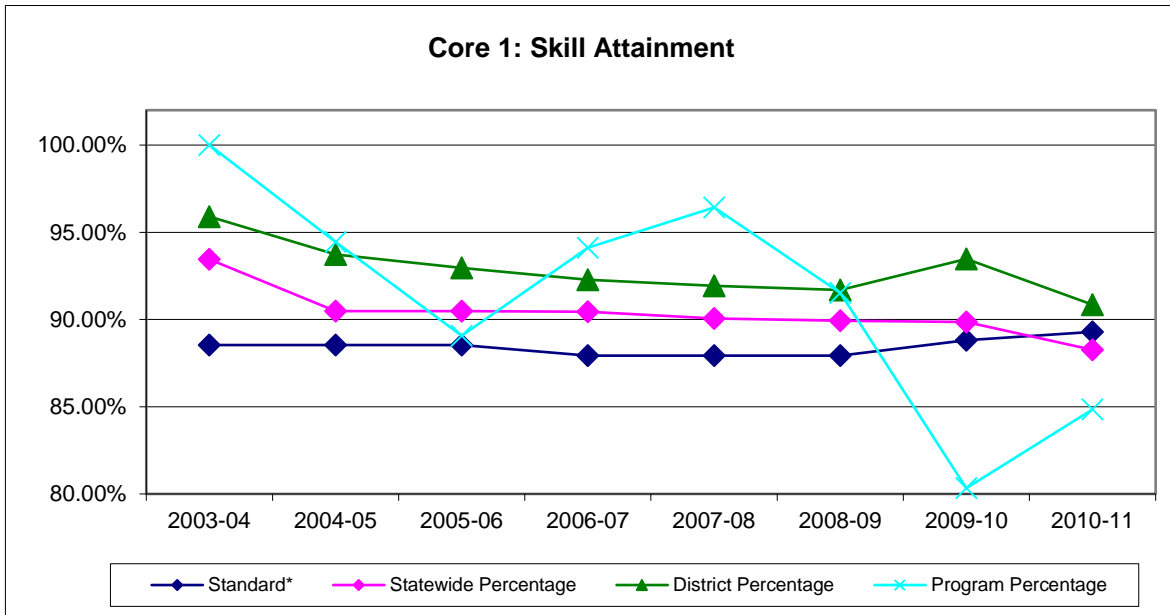
**OVERALL PERFORMANCE**

**CORE INDICATOR 1: Skill Attainment**

*(Percentage of concentrators earning a grade of "C" or better in courses)*

Year	Standard*	Statewide Percentage	District Percentage	Program Percentage	Difference from Standard	Difference from State Average	Total Enroll	Skill Attain
2003-04	88.54%	93.45%	95.90%	100.00%	11.46%	6.55%	48	48
2004-05	88.54%	90.49%	93.72%	94.44%	5.90%	3.95%	54	51
2005-06	88.54%	90.49%	92.96%	89.06%	0.52%	-1.43%	64	57
2006-07	87.93%	90.44%	92.28%	94.12%	6.19%	3.68%	51	48
2007-08	87.93%	90.06%	91.93%	96.43%	8.50%	6.37%	56	54
2008-09	87.93%	89.93%	91.69%	91.53%	3.60%	1.60%	59	54
2009-10	88.82%	89.85%	93.47%	80.33%	-8.49%	-9.52%	61	49
2010-11	89.29%	88.26%	90.85%	84.85%	-4.44%	-3.41%	66	56

\* State negotiated levels



**Los Medanos College**

**PROGRAM PERFORMANCE PROFILE**

**Accounting**

**TOP: 0502.00**

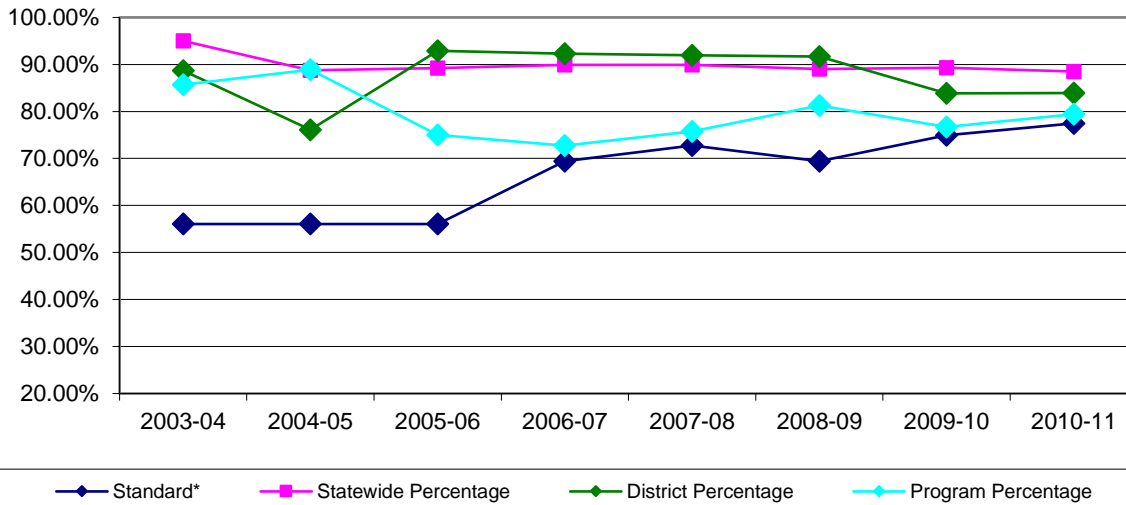
**CORE INDICATOR 2: Completions - (Certs, Degrees, Transfer)**

*(Percentage of leavers who earned a certificate, degree, or transferred)*

Year	Standard*	Statewide Percentage	District Percentage	Program Percentage	Difference from Standard	Difference from State Average	Total Enroll	Skill Attain
2003-04	56.05%	95.00%	88.69%	85.71%	29.66%	-9.29%	14	12
2004-05	56.05%	88.76%	76.12%	88.89%	32.84%	0.13%	27	24
2005-06	56.05%	89.20%	92.90%	75.00%	18.95%	-14.20%	28	21
2006-07	69.40%	89.94%	92.28%	72.73%	3.33%	-17.21%	22	16
2007-08	72.75%	89.90%	91.93%	75.76%	3.01%	-14.14%	33	25
2008-09	69.40%	89.02%	91.69%	81.25%	11.85%	-7.77%	32	26
2009-10	74.91%	89.30%	83.82%	76.67%	1.76%	-12.63%	30	23
2010-11	77.47%	88.50%	83.93%	79.41%	1.94%	-9.09%	34	27

\* State negotiated levels

**Core 2: Completions**



**Los Medanos College**

**PROGRAM PERFORMANCE PROFILE**

**Accounting**

**TOP: 0502.00**

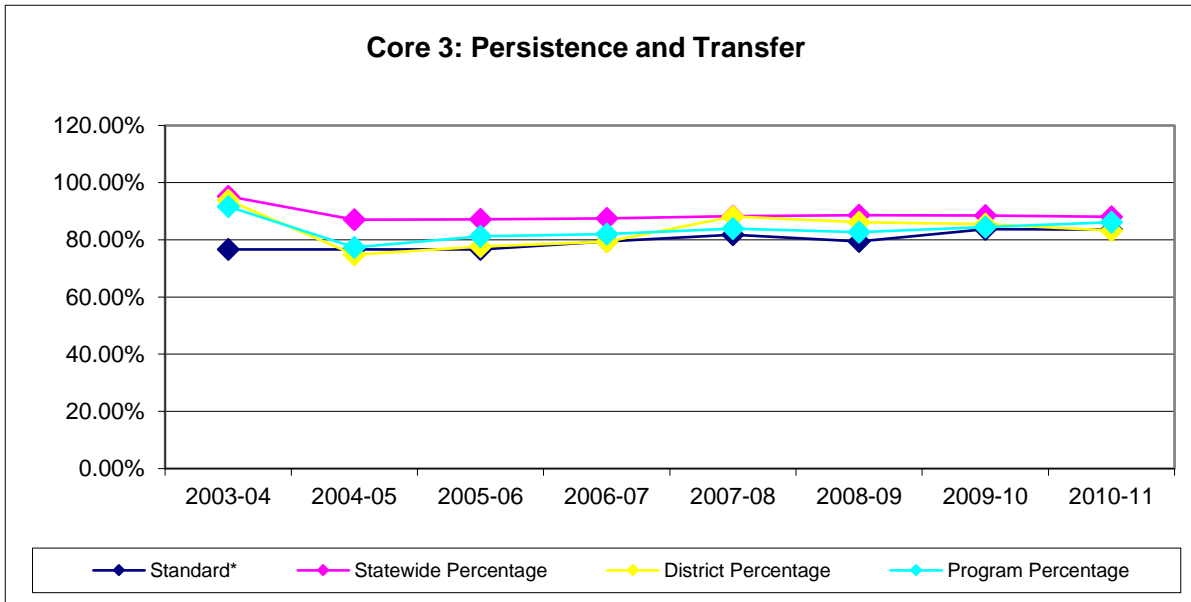
**CORE INDICATOR 3: Persistence and Transfer**

*(Percentage of concentrators who persisted in a CC or transferred)*

Year	Standard*	Statewide Percentage	District Percentage	Program Percentage	Difference from Standard	Difference from State Average	Total Enroll	Skill Attain
2003-04	76.65%	95.24%	93.85%	91.67%	15.02%	-3.57%	48	44
2004-05	76.65%	87.04%	74.79%	77.36%	0.71%	-9.68%	53	41
2005-06	76.65%	87.15%	77.61%	81.25%	4.60%	-5.90%	64	52
2006-07	79.40%	87.55%	79.38%	82.00%	2.60%	-5.55%	50	41
2007-08	81.79%	88.26%	88.18%	83.93%	2.14%	-4.33%	56	64
2008-09	79.40%	88.60%	86.16%	82.72%	3.32%	-5.88%	58	48
2009-10	83.73%	88.50%	85.47%	84.48%	0.75%	-4.02%	58	49
2010-11	83.54%	88.08%	83.30%	86.15%	2.61%	-1.93%	168	138

\* State negotiated levels

**Core 3: Persistence and Transfer**



**Los Medanos College**

**PROGRAM PERFORMANCE PROFILE**

**Accounting**

**TOP: 0502.00**

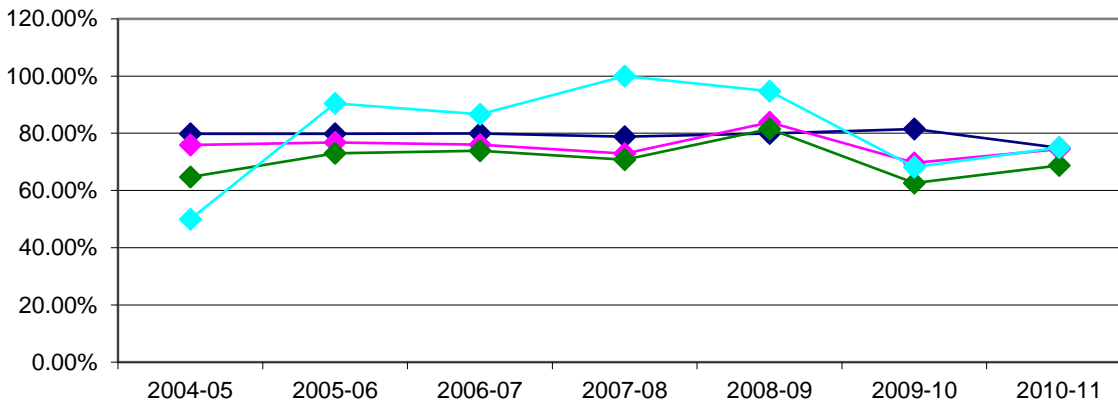
**CORE INDICATOR 4: Employment**

*(Percentage of leavers/completes employed - UI, Apprenticeship, Gov, Military)*

Year	Standard*	Statewide Percentage	District Percentage	Program Percentage	Difference from Standard	Difference from State Average	Total Enroll	Skill Attain
2003-04	79.86%	74.94%	76.00%	75.00%	-4.86%	0.06%	8	6
2004-05	79.86%	75.93%	64.76%	50.00%	-29.86%	-25.93%	18	9
2005-06	79.86%	76.81%	73.04%	90.48%	10.62%	13.67%	21	19
2006-07	79.91%	76.07%	73.91%	86.67%	6.76%	10.60%	15	13
2007-08	78.79%	72.89%	70.71%	100.00%	21.21%	27.11%	18	18
2008-09	79.91%	83.82%	81.52%	94.74%	14.83%	10.92%	19	18
2009-10	81.48%	69.66%	62.63%	68.18%	-13.30%	-1.48%	22	15
2010-11	74.91%	74.51%	68.75%	75.00%	0.09%	0.49%	20	15

\* Same as State negotiated levels

**Core 4: Employment**



◆ Standard\* 79.86% na      ◆ Statewide Percentage 74.94% na  
◆ District Percentage 76.00% na      ◆ Program Percentage 75.00% NA

**Los Medanos College**

**PROGRAM PERFORMANCE PROFILE**

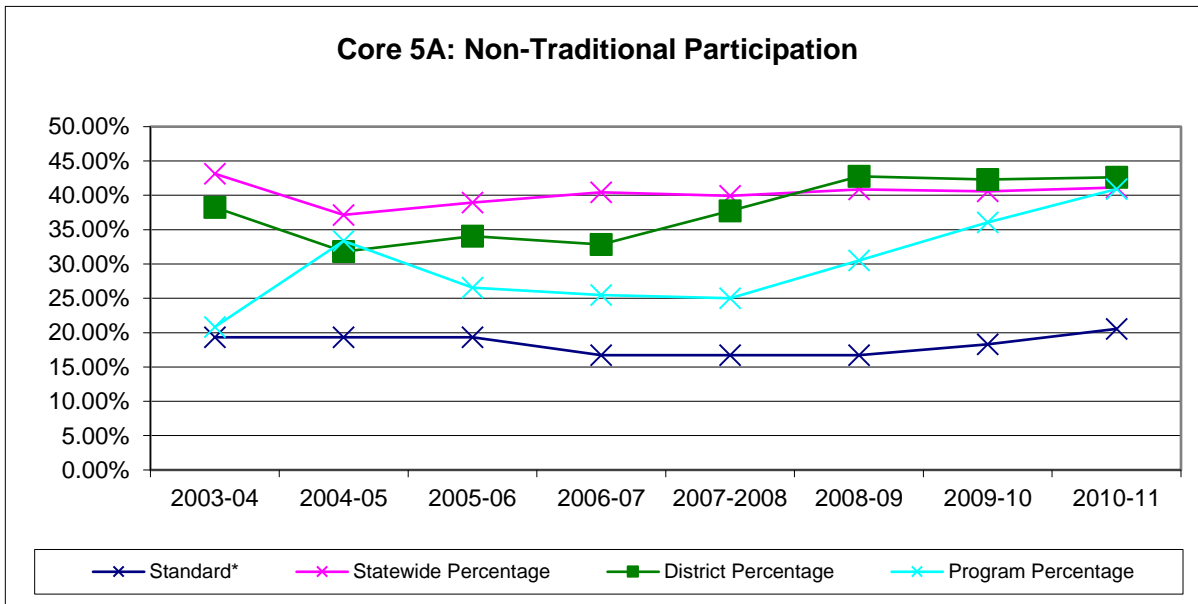
**Accounting**

**TOP: 0502.00**

**CORE INDICATOR 5A: Non-traditional Participation**  
(Percentage of concentrators in the under-represented group)

Year	Standard*	Statewide Percentage	District Percentage	Program Percentage	Difference from Standard	Difference from State Average	Total Enroll	Skill Attain
2003-04	19.34%	43.14%	38.25%	20.83%	1.49%	-22.31%	48	10
2004-05	19.34%	37.15%	31.80%	33.33%	13.99%	-3.82%	54	18
2005-06	19.34%	38.96%	34.07%	26.56%	7.22%	-12.40%	64	17
2006-07	16.72%	40.45%	32.82%	25.49%	8.77%	-14.96%	51	13
2007-2008	16.72%	39.94%	37.75%	25.00%	8.28%	-14.94%	56	14
2008-09	16.72%	40.86%	42.76%	30.51%	13.79%	-10.35%	59	18
2009-10	18.31%	40.57%	42.32%	36.07%	17.76%	-4.50%	61	22
2010-11	20.55%	41.14%	42.63%	40.91%	20.36%	-0.23%	66	27

\* State negotiated levels



**Los Medanos College**

**PROGRAM PERFORMANCE PROFILE**

**Accounting**

**TOP: 0502.00**

**CORE INDICATOR 5B: Non-traditional Completion**

*(Percentage of concentrators in the under-represented group)*

Year	Standard*	Statewide Percentage	District Percentage	Program Percentage	Difference from Standard	Difference from State Average	Total Enroll	Skill Attain
2003-04	23.28%	39.82%	38.76%	31.25%	7.97%	-8.57%	16	5
2004-05	23.28%	41.97%	37.60%	37.04%	13.76%	-4.93%	27	10
2005-06	23.28%	43.58%	38.51%	30.77%	7.49%	-12.81%	26	8
2006-07	18.69%	45.07%	38.36%	33.33%	14.64%	-11.74%	18	6
2007-2008	18.69%	45.05%	45.54%	29.63%	10.94%	-15.42%	27	8
2008-09	19.72%	45.92%	49.81%	39.29%	19.57%	-6.63%	28	11
2009-10	22.19%	45.36%	45.34%	38.46%	16.27%	-6.90%	26	10
2010-11	23.56%	45.68%	49.31%	45.95%	22.39%	0.27%	37	17

\* Same as State negotiated levels

