

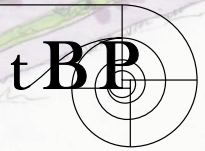
2001

Los Medanos College FACILITIES MASTER PLAN



Contra Costa
Community College
District

 tBP/Architecture



2001

Los Medanos College FACILITIES MASTER PLAN

Contra Costa
Community College
District

FACILITIES MASTER PLANNING COMMITTEE

Lokesh Bali
Tom Beckett
Kate Boisvert
Peter Garcia
Daniel Henry, *Chair*
Veronica Knott
Richard Livingston
Raúl Rodriguez
Robert Skapura
Glenn Sobolik
Sandra Trujillo-Holman
Eileen Valenzuela

PLANNING TEAM

 tBP/Architecture

1000 Burnett Avenue
Suite 140
Concord, CA 94520
(925)246-6419

2300 Newport Boulevard
Newport Beach, CA 92663
(949)673-0300

3701 Wilshire Boulevard
Suite 535
Los Angeles, CA 90010
(213)381-6400

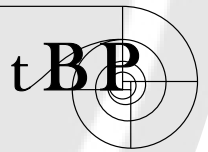


Table of Contents

LETTER FROM THE PRESIDENT	ii
INTRODUCTION	1
• Purpose	1
• Planning Process	1
• Project Goals	2
• Document Organization	2
RECOMMENDATIONS	3
• Recommended Master Plan	4
• New Building Projects	7
• Recommended Building Plan	8
• Renovation Projects	9
• Design Images	10
EXISTING ANALYSIS	12
• Existing Site Analysis	13
• Existing Building Analysis	17
APPENDIX	19
• Master Plan Building Program	20
• Educational Analysis	21
• Development Options	31



Letter from the President

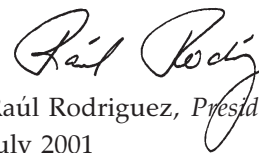
Founded 27 years ago during an era of educational experimentation and innovation, Los Medanos College has always featured a strong liberal arts tradition based on interdisciplinary collaboration along with occupational and career training that is both practical and current. The enrollment growth of the college over the years has steadily increased and will continue to expand at an even higher rate in the future.

Although the original campus complex still serves as the main hub of student instruction and service delivery, it is less and less able to fully meet the complex needs of a diverse and rapidly increasing student population. To respond to the current and anticipated needs of its students and community, Los Medanos College must embark on an era of new facilities construction and development. To guide that effort, the college has produced a Facilities Master Plan that is described in this document.

The Facilities Master Plan is primarily founded on two documents: the Educational Master Plan that was developed approximately four years ago and the Strategic Plan that is reviewed and updated every three years. The Educational Master Plan contains vital information about the future growth and needs of our educational programs. It is complemented by the unit plans and program reviews that are conducted on a regular basis to provide an assessment of programs and services. The Strategic Plan lists the major college goals that provide direction to the college community. It also identifies specific

targets to measure the progress of the college on meeting the strategic goals. In addition to these two key documents, the Facilities Master Plan was created with the input of all college constituencies. A series of open meetings was held on campus culminating in a College Assembly on this topic in spring 2001.

The Facilities Master Plan articulates a dramatic vision of what the future can hold for Los Medanos College. The plan is educationally sound, centered on the needs of students, and aesthetically pleasing. It addresses most of the deficiencies of the current situation and offers a number of bold concepts that hold the potential to positively transform the image of the college. Now that the Facilities Master Plan has been completed, the real challenge is just beginning. The challenge for everyone who cares about the future of Los Medanos College is to secure funding for the construction of new facilities, for the modernization of existing facilities, and for the landscaping and beautification of the grounds. By accomplishing these tasks, we will ensure that Los Medanos College will continue to achieve its mission of increasing the knowledge, of improving the skills, and of enhancing the lives of our students and our community.



Raúl Rodríguez, *President*
July 2001



Introduction

PURPOSE

The purpose of the Facilities Master Plan for Los Medanos College is to provide a guide for future campus development. The Plan provides a “blueprint” for the placement of future facilities and site improvements for the College.

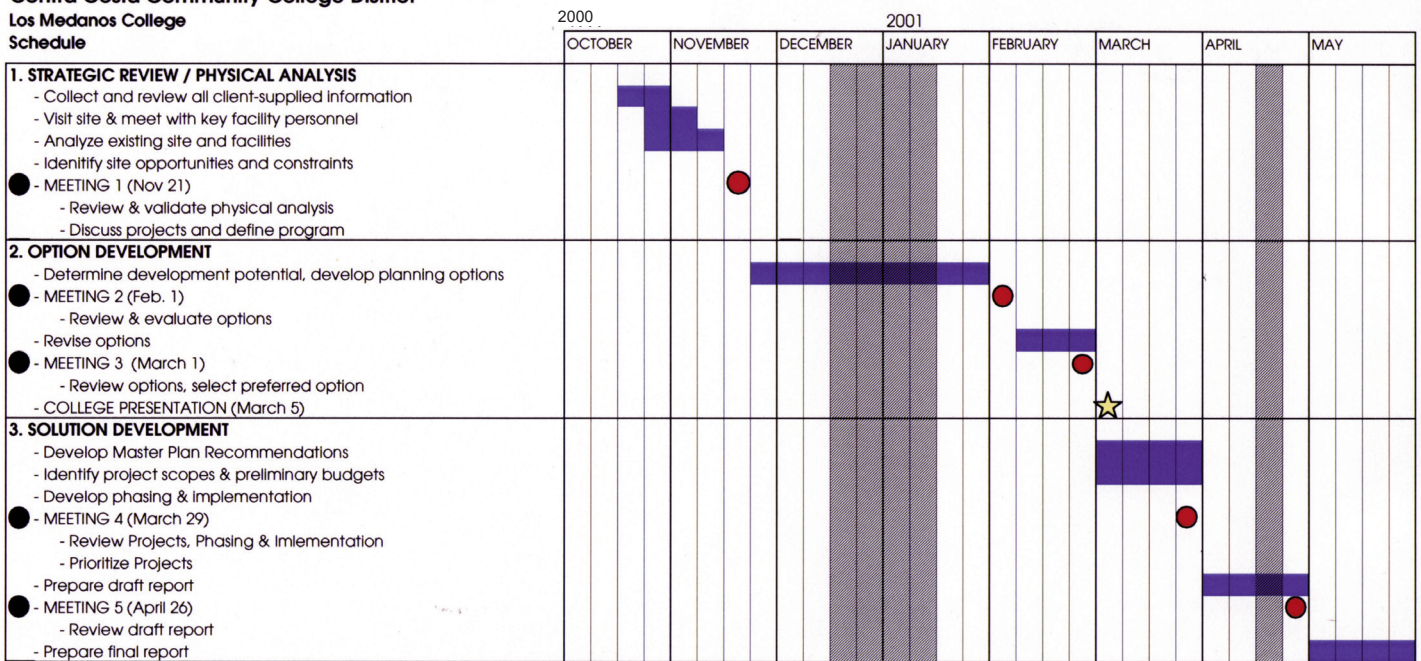
comprised of key faculty, staff, and administrators. The Committee reviewed the Analysis of Existing Physical Conditions, evaluated a series of Development Options, and made decisions that led to the development of the Master Plan Recommendations.

THE PLANNING PROCESS

The planning process has been a highly participatory one involving the many constituencies of the College. The Planning team worked closely with the Facilities Master Planning Committee,

The planning process included a series of Facilities Master Planning Committee meetings as well as presentations and discussions with the College to broaden the plan's perspective and to enhance the acceptance of proposed developments.

Contra Costa Community College District Los Medanos College Schedule



LEGEND:
■ Team work in progress ● Steering Committee Meeting
■ School Closed ★ College Presentation



Introduction

PROJECT GOALS

The following project goals were identified with the Planning Committee at the start of the Planning Process.

- Expand instructional space
- Improve the visual image of the College
- Create a welcoming "front door" to the campus
- Locate footprints for future planned facilities
- Consolidate and expand student services
- Create more unprogrammed space for students (activity areas - indoor and outdoor)
- Consider opportunities to improve campus/community relations.

DOCUMENT ORGANIZATION

The Facilities Master Plan describes a plan for site and facilities improvements that will support current and future needs at the College. This document is organized into the following sections:

RECOMMENDATIONS

The Recommendations section of this document describes the overall Master Plan Recommendations for the College. The Recommended Plan identifies the proposed projects and a set of design images serve as a guide for future development.

EXISTING ANALYSIS

The Existing Conditions section is an analysis of the existing campus, the zoning of the site and facilities, and vehicular and pedestrian circulation.

APPENDIX

This section includes information that was used in the planning process. A program summary of facilities needs describe the instructional needs at the college, and sketches of development options that were discussed in the preparation of the Facilities Master Plan.



Recommendations

The Facilities Master Plan Recommendations for Los Medanos College presents an overall picture of the future developed campus and includes proposed sites for new facilities, recommendations regarding renovations of existing facilities, and site development projects.

While drawings in the Plan appear specific, the forms are conceptual sketches, which highlight the location and purpose of improvements. The final design of each site and facility project will take place as projects are funded and detailed programming and design occurs.

The Recommendations are presented in a series of illustrations, which are included in this section and described below.

- **RECOMMENDED MASTER PLAN**

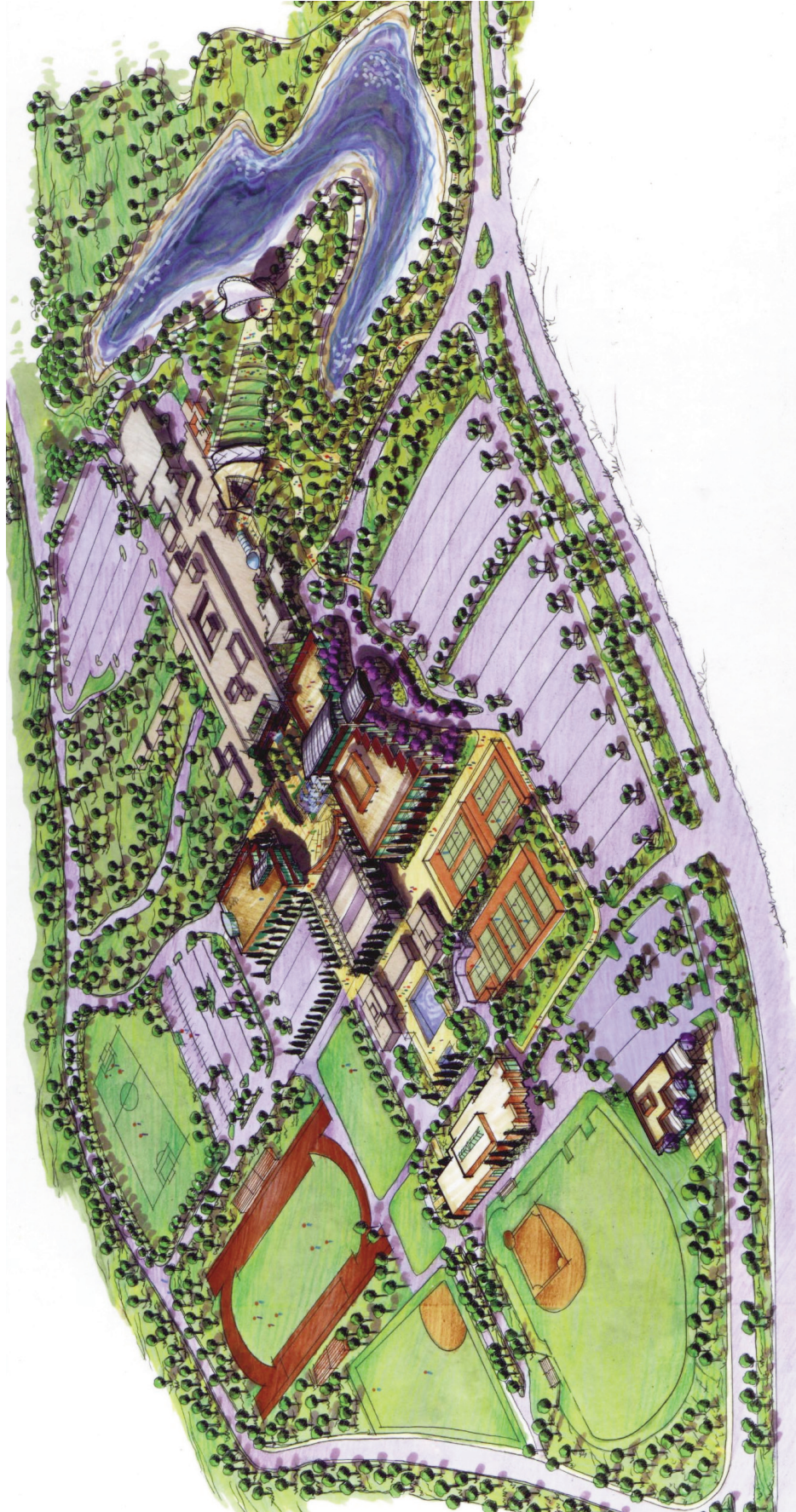
The Recommended Master Plan is an illustration of the proposed Facilities Master Plan recommendations. The graphic illustrates all of the site development and facility projects identified in the plan.

The Recommended Building Plan describes the proposed Renovations to the existing facility (Secondary Effects), which would occur as new facilities are constructed.

- **DESIGN IMAGES**

The Design Images identify the key concepts and elements discussed in the planning process as they relate to proposed projects. These images serve as a guide to future building and site development.





Los Medanos College
RECOMMENDED MASTER PLAN



Recommendations

RECOMMENDED MASTER PLAN

The Facilities Master Plan for Los Medanos College includes opportunities to expand the existing campus and develop the site while improving the overall image of the College.

Two new footprints are proposed at the front of the College to develop a welcoming gateway to the College. Together they form a friendly 'face for the campus' and a 'front door' for students to start their experience at Los Medanos College. The first floor of the proposed facilities is accessed directly from the parking area and the upper floors align with the levels of the main facility.

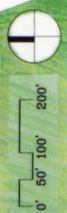
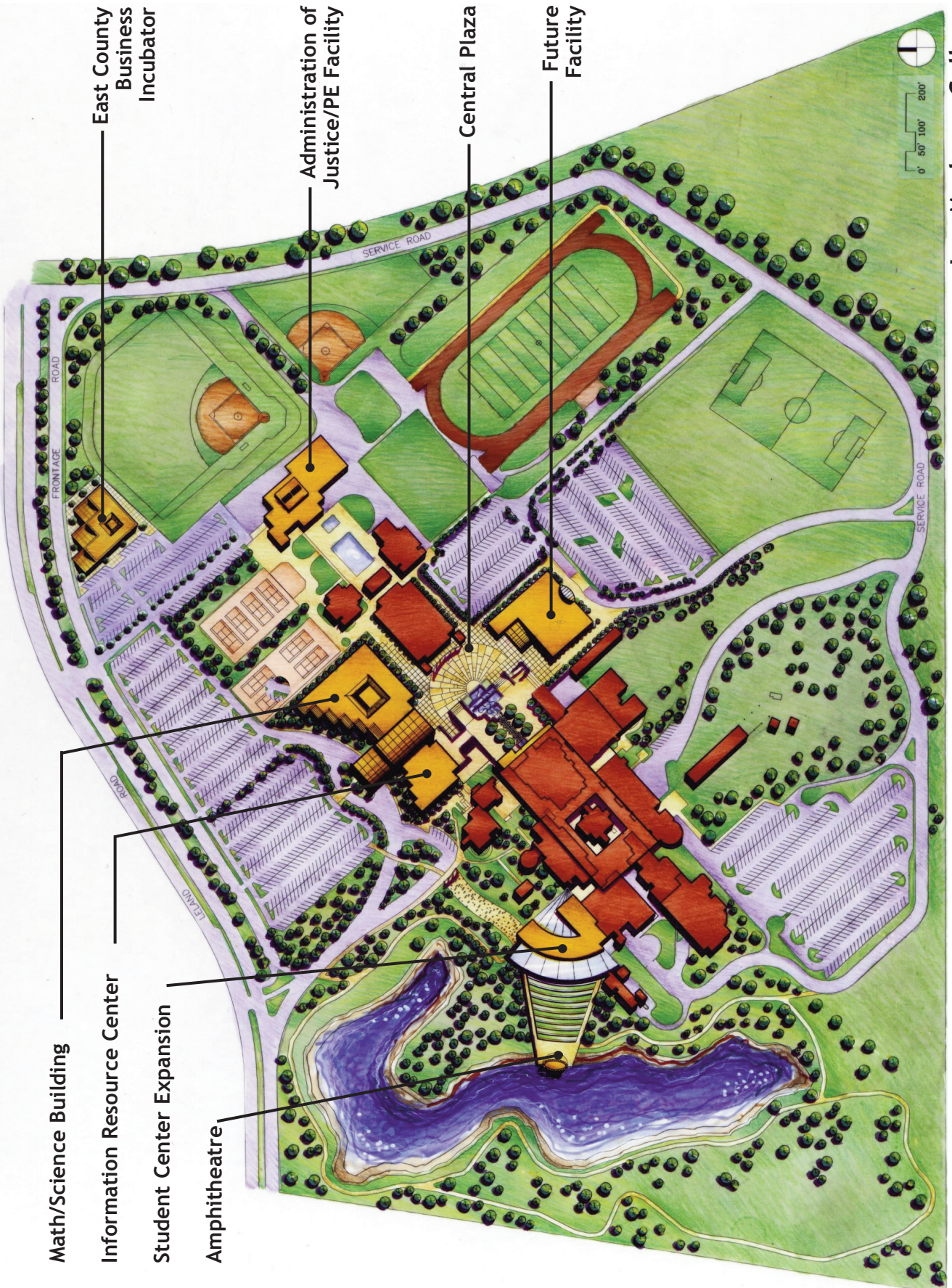
Primary vehicular access to the College is re-aligned so that as one enters the campus, a new gateway is clearly visible. A new drop-off area and short-term visitor parking will allow for easy access to the campus. In addition, the College is discussing potential development of a new Transit Center on the campus in coordination with the local transit authority. An information center, incorporated into one of the new facilities, will provide useful information to visitors to the campus.

Through the new gateway buildings, a developed outdoor plaza becomes a central focal point of the campus. Flanked by the main facility to the west, the physical education facilities to the east, and proposed facilities to the north and south, the plaza becomes a defined outdoor space.

An extension to the main facility on the west end provides the opportunity to expand the area designated for Student Activities, and take advantage of views toward the lake. A proposed outdoor amphitheatre is an extension of the facility and reaches out toward the lake, with the lake forming a backdrop to the stage.

Overall campus circulation is reconfigured to direct traffic to the perimeter and eliminate the street through the middle of the campus. This allows for a number of expansion opportunities for both facilities and parking.





Los Medanos College
RECOMMENDED MASTER PLAN

Recommendations

NEW BUILDING PROJECTS

Information Resource Center

The new Information Resources Center will replace the existing library with a modern and appropriately sized facility. It will serve all instructional programs and will greatly improve the College's learning environment and community access. The proposed 2-story building will establish the "front door" to the campus and will improve access and circulation as it will tie in with the levels of the existing structures.

Secondary Effects

Vacated space in the core building of the existing facility provides for additional labs, classrooms, and faculty offices to support instructional programs. Both should emphasize expansion of technology-focused instructional programs.

Math/Science Building

A new building will provide new facilities for Math and Science programs. This 3-story structure will form part of the new welcoming gateway to the College, and will border the newly developed central plaza.

Secondary Effects

Vacated space in the existing facility provides space for additional labs, classrooms, and faculty offices to support instructional programs. Additional space will allow for the expansion of technology-focused instructional programs, as well as for the expansion and consolidation of student services.

Student Center Expansion

A renovation and expansion of the existing Student Activities area will provide additional space for Student Offices, meeting rooms, dining areas, and the Bookstore. The proposed expansion will extend out towards the lake, creating a series of outdoor activity areas for student and community use. Student fees could be the funding source for this project.

Administration of Justice/P.E. Facility

A new facility is proposed to support the Administration of Justice and the P.E. program. The facility will replace a series of portables and includes training space for Administration of Justice as well as appropriate space for Dance, Weight Training, Fitness, Racquetball, and Offices.

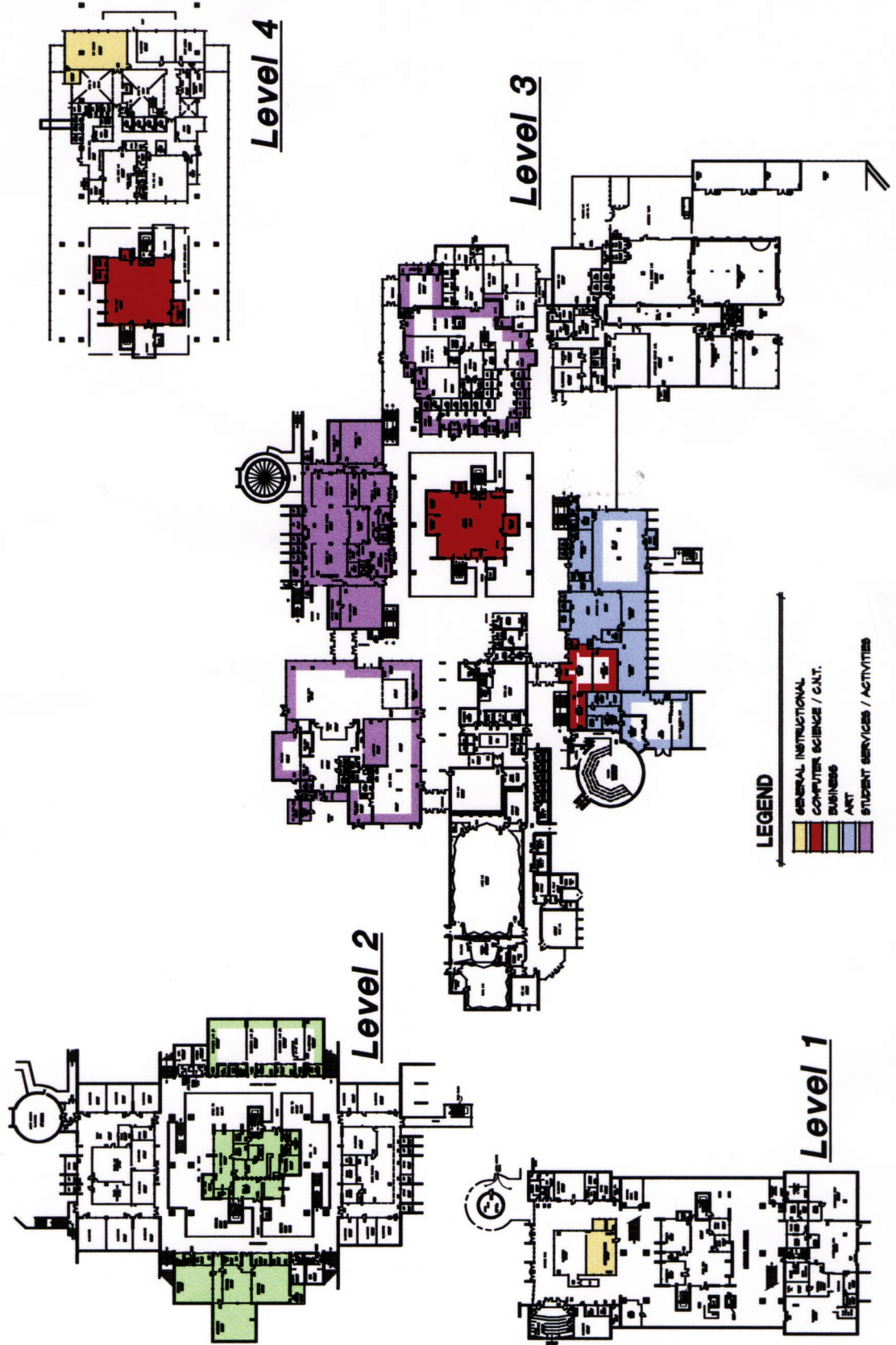
East County Business Incubator

A new 20,000 square foot facility will house a new Business Incubator facility on campus. Potential partners include the City of Antioch, the local Chambers of Commerce and the Contra Costa County Partnership.

Future Facility

A footprint on the Recommended Master Plan is identified for a future facility that will be required as the campus grows. The function of this facility will be determined in accordance with emerging needs.





Los Medanos College
RECOMMENDED BUILDING PLAN

Recommendations

RENOVATION PROJECTS

Building Lobby

A proposed renovation to the east side of the existing facility creates a new edge to the newly developed plaza, a defined entrance for guiding students and visitors and a welcoming lobby to the building.

Art Department Expansion

A renovation and expansion of the existing Art Department will provide additional dedicated lab space for two-dimensional and three-dimensional arts, spaces for lecture, critique, multi-media presentations, and large spaces for work and storage. Reconfiguration of the space will provide for easy access to the Art service area.

Student Services Renovation and Expansion

This project centralizes and expands Student Services in a One-stop Shop in the renovated Student Services facility. Functions may include Admissions, Financial Aid, Matriculation, Assessment, EOPS, DSPS, Counseling, Career Development and Student Placement. The integrated services will improve access for students, as well as foster more cohesive and coordinated staffing and administration.

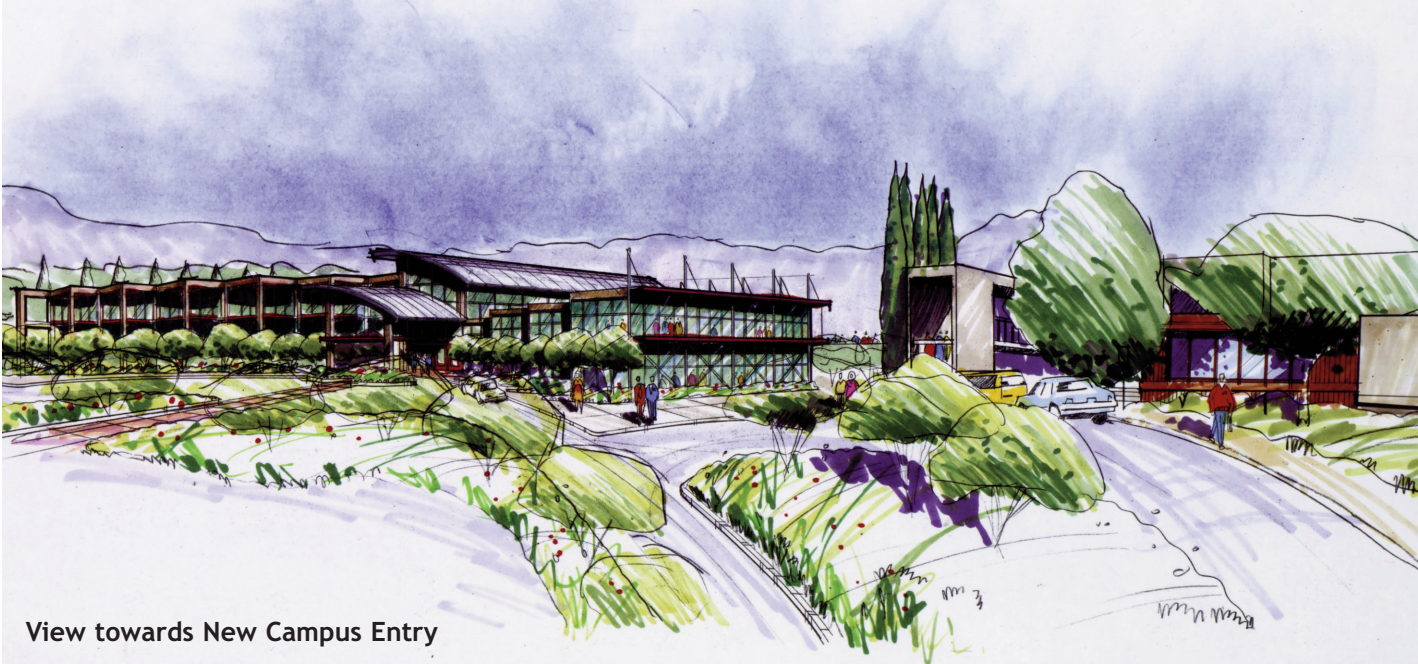
Instructional Space Renovation and Expansion

The construction of the Information Resource Center and the Math/Science/Building frees space in the main facility and allows for expansion of a number of instructional programs. Business, computer science and computer networking expand into the majority of the vacated space with the remainder allocated to expansion of general classroom and office space.

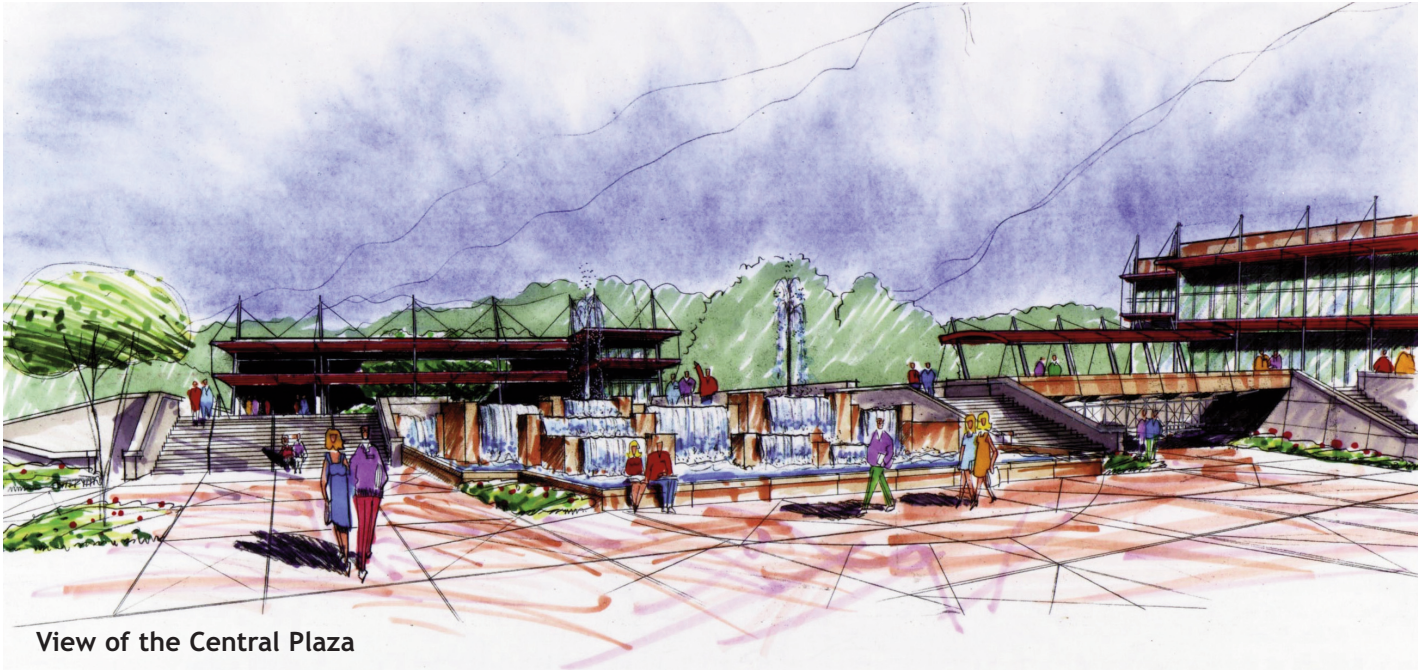


Recommendations

DESIGN IMAGES



View towards New Campus Entry

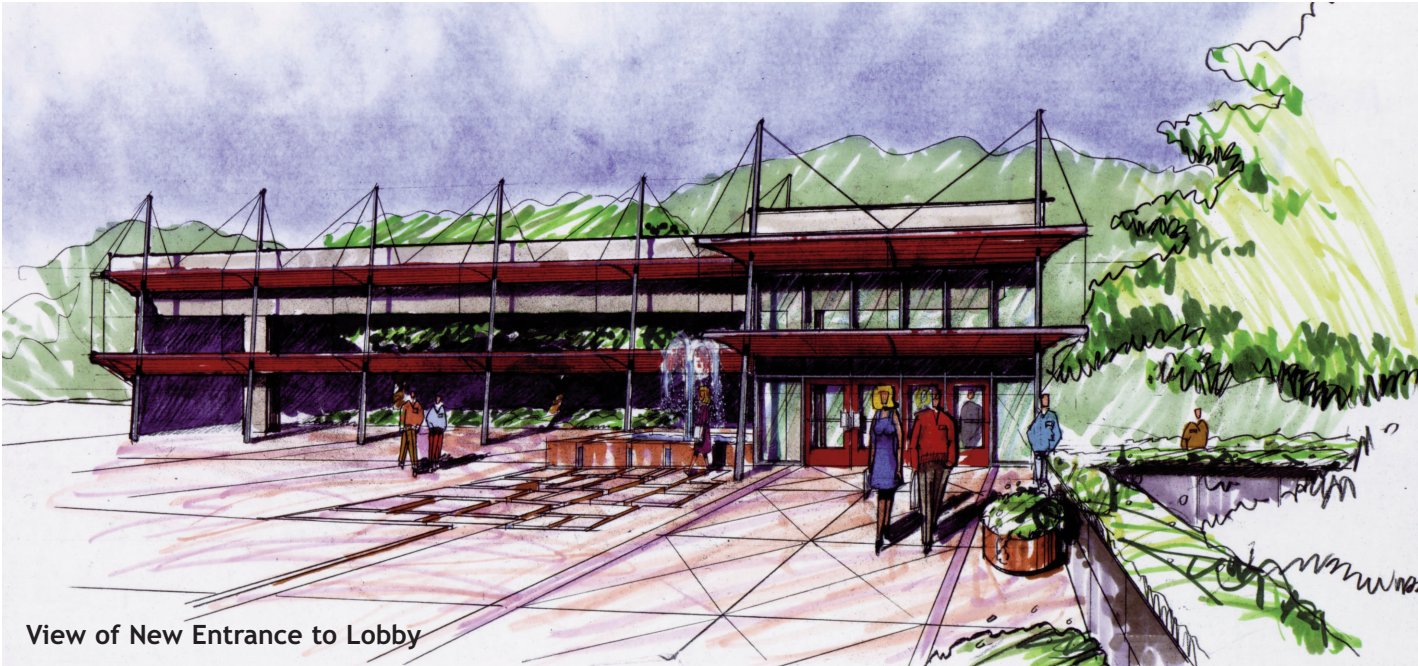


View of the Central Plaza

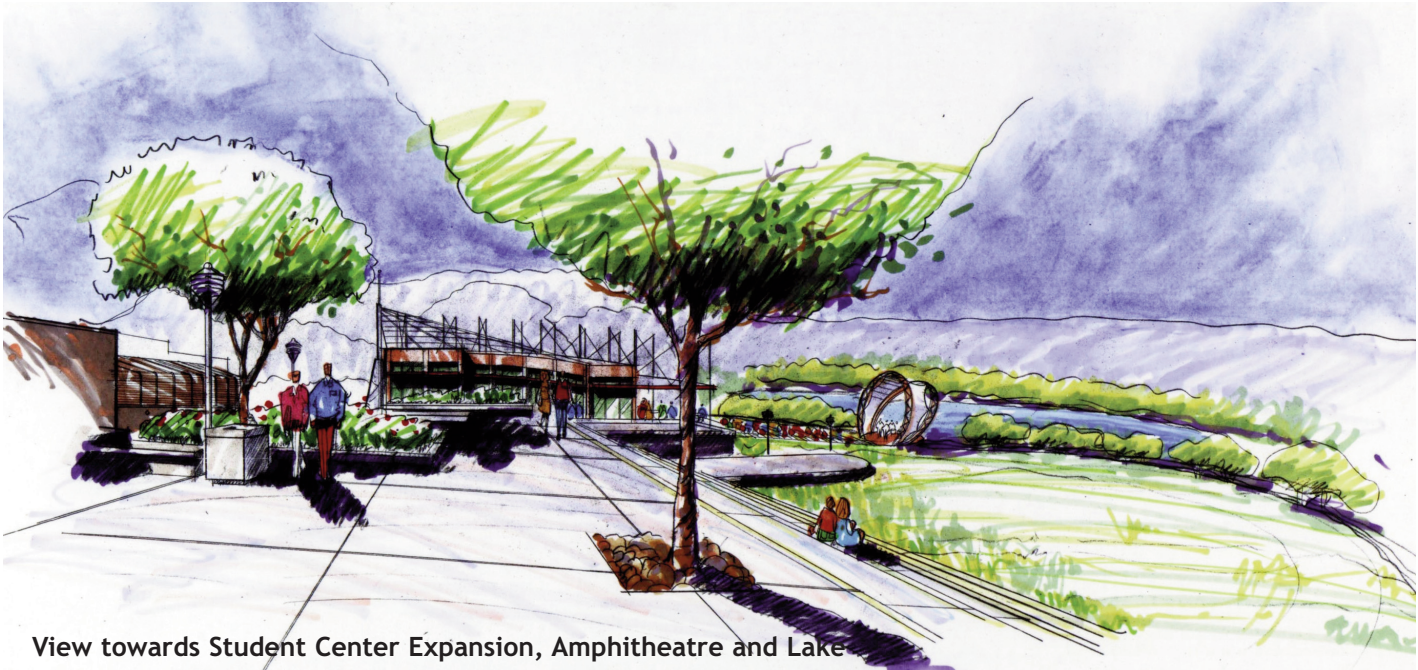


Recommendations

DESIGN IMAGES



View of New Entrance to Lobby



View towards Student Center Expansion, Amphitheatre and Lake



Existing Analysis

The Existing Analysis phase of the planning process involved a study of the existing conditions on the campus in order to identify key planning issues to be addressed in the Master Plan

Recommendations. The findings are summarized in two graphic plates, illustrating patterns and characteristics to guide future development.



Existing Analysis

EXISTING SITE ANALYSIS

Campus zoning and circulation patterns are illustrated on this graphic. Colors are used to indicate the current assigned functions of buildings and to identify the general zoning of uses on the campus. Campus entry points and major vehicular circulation routes are illustrated, along with the areas allocated for parking.

The following issues were identified in this graphic:

Campus Zoning Issues

- The campus is clearly zoned - academic areas are clustered in the main facility and athletic functions are grouped on the east side of campus.
- Parking is appropriately located on the perimeter of the campus, but is not evenly distributed.
- The lake forms a natural edge to the campus.
- Visibility of the campus is limited in its current configuration.



Existing Analysis

Vehicular Circulation Issues

- There are currently 3 access points to the campus - 1 primary and 2 secondary.
- The main vehicular entry to the campus is well-marked, yet the first view upon entering the campus is of portable facilities.
- The main campus structures are not visible from the main entry, due to the land configuration.
- The campus lacks a clear identifiable "front door".
- It is not clear to the first time visitor to the campus where to park and enter the campus
- The perimeter road is a partial loop. It is not connected due to the natural barrier formed by the lake.
- The road that bisects the campus is under-utilized.
- Circulation in the parking lot closest to the athletic fields is confusing.
- The existing public transit stop is on the front edge of the campus on Leland Road. Waiting passengers have limited protection from the elements and there is not a well-defined pedestrian path into the campus.

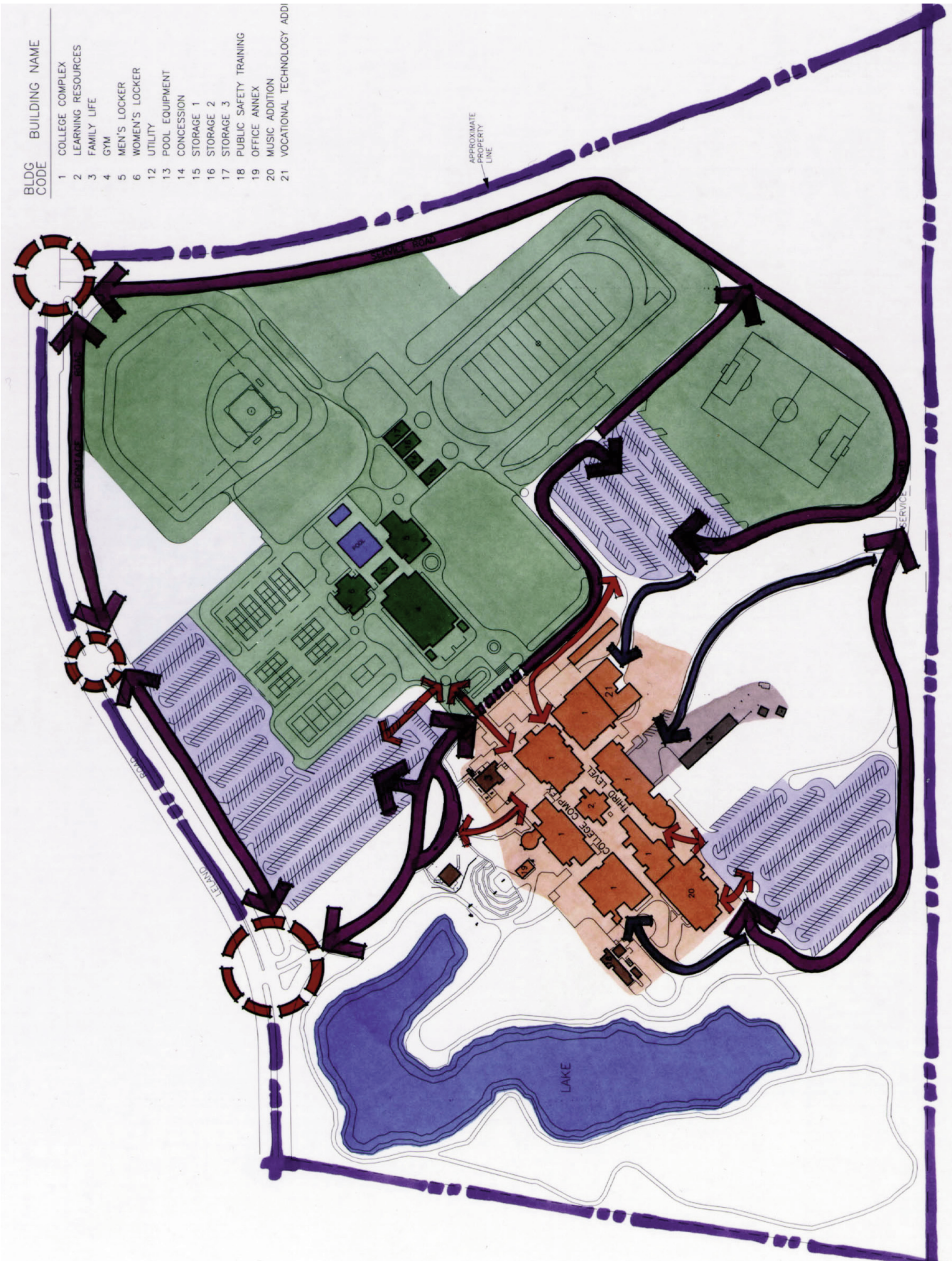


Existing Analysis

Pedestrian Circulation Issues

- There are 3 primary pedestrian entry points to the campus.
- Paths from the parking lots into the campus could be improved.
- The "front door" to the campus is very understated, with a small sign over double doors at the corner of the building.
- The pedestrian access from the existing transit stop is not well defined.





Los Medanos College
EXISTING SITE ANALYSIS

BLDG CODE	BUILDING NAME
1	COLLEGE COMPLEX
2	LEARNING RESOURCES
3	FAMILY LIFE
4	GYM
5	MEN'S LOCKER
6	WOMEN'S LOCKER
12	UTILITY
13	POOL EQUIPMENT
14	CONCESSION
15	STORAGE 1
16	STORAGE 2
17	STORAGE 3
18	PUBLIC SAFETY TRAINING
19	OFFICE ANNEX
20	MUSIC ADDITION
21	VOCATIONAL TECHNOLOGY ADDI



Existing Analysis

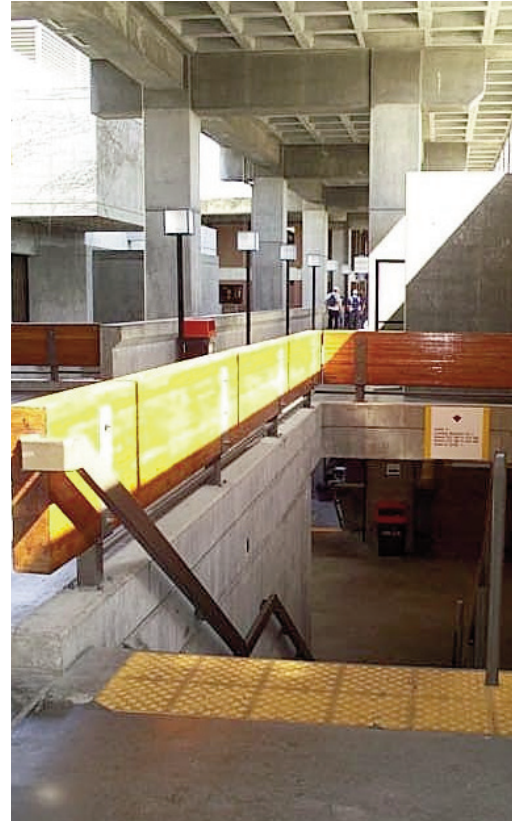


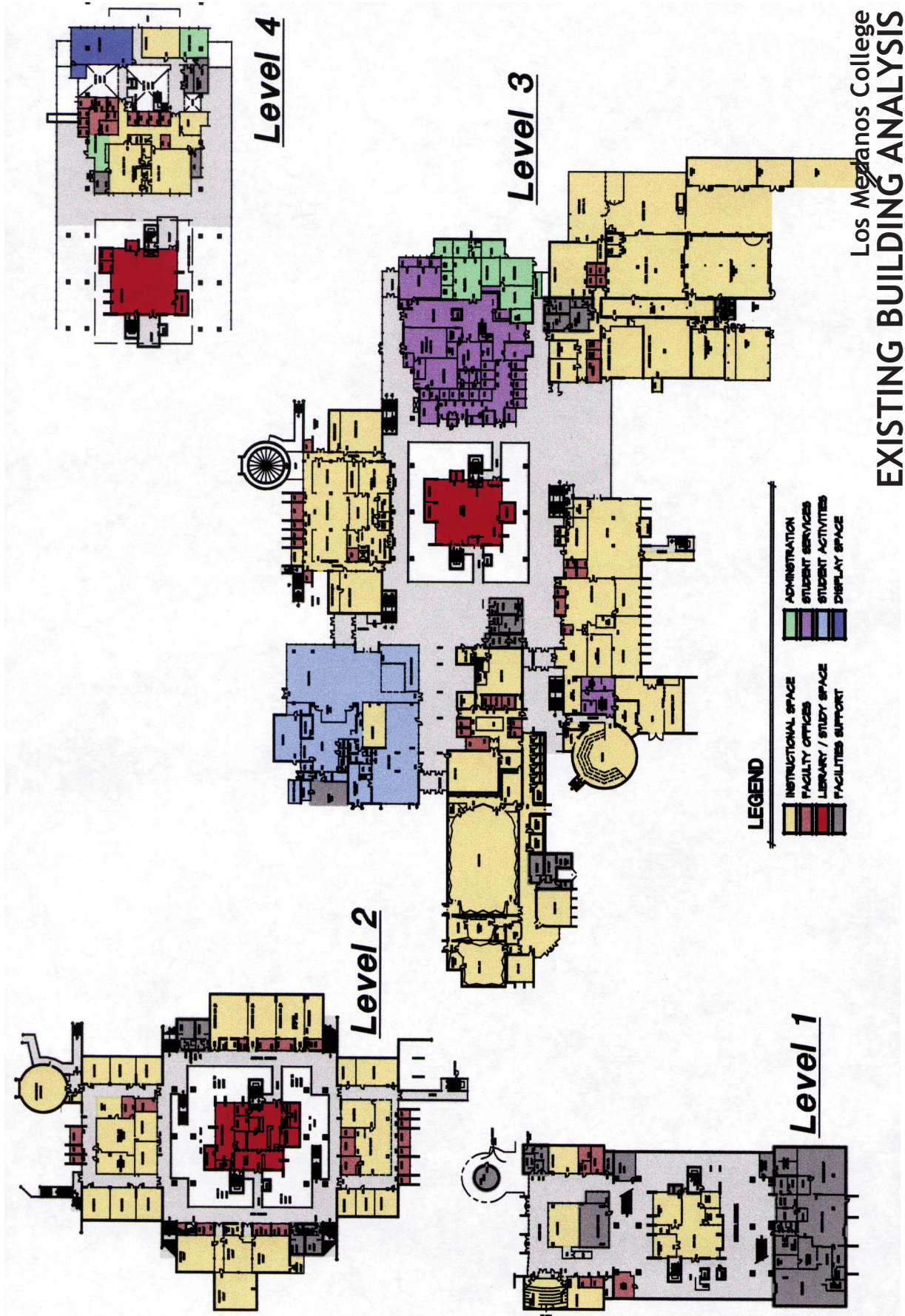
EXISTING BUILDING ANALYSIS

Campus zoning within the main campus structures are illustrated on this graphic. Colors are used to indicate the current assigned functions of areas within the building in order to identify the general zoning.

The following issues were identified in this graphic:

- The library is centrally located in the "core" building yet has limited access due to security requirements.
- The instructional areas surround the library with faculty offices distributed throughout.
- Student Services has grown over time and is currently split into three locations.
- The majority of Student Services is located adjacent to the main entrance, yet the current configuration does not provide easy access to students. Additional space is required.
- The Student Union requires additional space.
- The Art Department requires additional space, and easy access to its outdoor service yards.
- The classroom in the middle of the food service area is inappropriately located.





Appendix

This section of the document includes information that was generated during the Planning Process and used in the development of the Master Plan Recommendations.

The following is included:

MASTER PLAN BUILDING PROGRAM

A summary of the projected facility projects identifies the functions to be housed in each facility, as well as the Secondary Effects related to each of the new construction projects.

EDUCATIONAL ANALYSIS

A series of tables illustrate the quantification of the current and projected instructional programs used in the development of the Recommendations.

DEVELOPMENT OPTIONS

During the Option Development phase of the planning process, a series of options were created, reviewed and evaluated. They are included in this section for reference.



Appendix

MASTER PLAN BUILDING PROGRAM

LOS MEDANOS COLLEGE

Master Plan Building Program

Program / Project	Need	ASF*	GSF*	New	Addition	Renov	Sec Eff	Avail ASF
Childcare	Additional space to support the Child Development Center program	7,521	9,997		X		-	0
Information Resource Center	New space for the Library/Info Resource Center	20,363	26,333	X			Core Building Remodel 16,278 GSF	13,471
Math/Science Building	New space for Math & Sciences	44,548	64,130	X			Computer Area - 7,296 ASF Science Area - 12,763 ASF Math Area - 5,832 ASF	25,891
Admin. Justice/P.E.	New space for PE Dance, Fitness, Racquetball, Weight Room, AJ Training and Classroom space	24,007	28,727	X			Eliminates 5,220 ASF	0
Art Department	Additional space to support the Art program	8,164					X Computer Area - 7,296 ASF Journalism - 868 ASF	0
Student Services	Space to centralize and expand student services	12,820					X	0
Student Union	Space to expand existing student union	8,400	12,000		X			0
Total Available ASF								39,362

* ASF and GSF areas are from documentation prepared by the District.



Appendix

EDUCATIONAL ANALYSIS

Projection for Future Instructional Program

The following represents a quantifiable approach to actualizing a vision for the future. Class sections, WSCH per section, FTES, and percentage breakdowns for lecture and laboratory are used as the basis for the projections.

The projections have also taken in to account the actual performance of each discipline in recent years and melded this with comparisons with 58 community colleges in California from the Maas Companies database, and the pedagogical changes that are anticipated in the future. It should be noted that some instructional disciplines have been projected to demonstrate greater growth than others as a function of past performance, projected need, and statewide perspective. The increase of approximately 50% in student enrollment by the year 2010, therefore, will not come as linear or relational relative to its application to each instructional discipline.

The projected instructional program has been designed to provide a snapshot of what the College will look like with a 12,000 student enrollment and a 15,000 student enrollment.

The following reference sources were used to arrive at these projections:

1. 2000 Contra Costa Community College District Report 17 ASF/OCSF Summary and the Capacities Summary (an inventory of facilities that is recorded with the State Chancellor's Office)
2. The Weekly Student Contact Hours (WSCH) Comparison Report (published by the State)
3. Performance data provided via Los Medanos College
4. Data from the Los Medanos College Admissions and Records Office
5. The Maas Companies database that is comprised of information from 58 of the 72 community college districts within the State, for which the Maas Companies have completed educational and facility master plans.



Appendix

EDUCATIONAL ANALYSIS

TABLE A
TITLE 5-ADMINISTRATIVE CODE
ASSIGNABLE SQUARE FEET (ASF) FOR
LABORATORY SPACE

Instructional Discipline	TOPS CODE	ASF/Station	ASF/100 WSCH
Agriculture	0100	115	4.92
Biological Science	0400	55	233
Business / Mgt.	0500	30	128
Communications	0600	50	214
Computer Info. Systems	0700	40	171
Education/PE	0800	75	321
Engineering/Tech	0900	75	321
Auto Mechanic	0947	200	856
Auto Technology	0948	75	556
Aviation Maintenance	0950	175	749
Fine/Applied Arts	1000	60	257
Foreign Language	1100	35	150
Health Occupations	1200	50	214
Consumer Ed/Child Dev.	1300	60	257
Law	1400	35	150
Humanities	1500	35	150
Library Science	1600	35	150
Mathematics	1700	35	150
Physical Science	1900	60	257
Psychology	2000	35	150
Public Affairs/Services	2100	50	214
Social Science	2200	35	150
Commercial Services	3000	50	214
Interdisciplinary	4900	60	257
Welding	5341	90	385

Source: Maas Companies - Calculations based on California Code of Regulations Title 5, Chapter 8 Section 57028

Appendix

EDUCATIONAL ANALYSIS

TABLE B
STATE-WIDE AVERAGE
LECTURE/LABORATORY WSCH RATIO

Instructional Discipline by Tops	TOPS CODES	Statewide Averages	
		% WSCH Lecture	% WSCH Lab
Agriculture	0100	20	80
Biological Science	0400	40	60
Business / Mgt.	0500	85	15
Communications	0600	80	20
Computer Info. Systems	0700	50	50
Education /PE	0800	25	75
Engineering/Tech	0900	35	65
Fine/Applied Arts	1000	40	60
Foreign Language	1100	85	15
Health Occupations	1200	40	60
Consumer Ed/Child Dev	1300	75	25
Law	1400	80	20
Humanities	1500	90	10
Library Science	1600	50	50
Mathematics	1700	90	10
Physical Science	1900	40	60
Psychology	2000	95	5
Public Affairs/ Services	2100	95	5
Social Science	2200	95	5
Commercial Services	3000	40	60
Interdisciplinary	4900	60	40

Source: Maas Companies - Calculations based on Chancellor's Office CCAF-320 Data Files

Appendix

EDUCATIONAL ANALYSIS

**TABLE C
LOS MEDANOS COLLEGE
FACILITIES INVENTORY – OCTOBER 2000**

Room use Category	Description	Assignable Square Footage (ASF)
000	Inactive Area	0
100	Classroom	21,281
210-255	Laboratory/Laboratory Service	65,490
300	Office/Conference	26,309
400	Library	11,098
510	Armory	48
520-525	Physical Education (Indoor)	33,028
530-535	Instructional Media (AV/TV)	3,494
540-595	Clinic/Demonstration	3,513
610-615	Assembly/Exhibition	4,186
630-690	Merchandise/Lounge/Meeting Room	16,832
710-770	Physical Plant/Shops/Data Process.	9,390
TOTAL	ASF	194,669

Source: Space Inventory and Building Facilities Report

Appendix

EDUCATIONAL ANALYSIS

TABLE D
LOS MEDANOS LECTURE AND LABORATORY WSCH
BY INSTRUCTIONAL DISCIPLINE
FALL--2000

Instructional Discipline	TOPS CODE	# of "Net" Sections*	Lecture WSCH	Laboratory WSCH	Total WSCH
Biological Science	0400	27	2,316	3,473	5,789
Business / Mgt.	0500	89	4,788	845	5,633
Communications	0600	2	226	56	282
Computer Info. Systems	0700	85	4,571	4,572	9,143
Education/PE	0800	50	1,127	3,382	4,509
Engineering/Tech	0900	35	826	1,533	2,359
Fine/Applied Arts	1000	90	2,921	4,382	7,303
Foreign Language	1100	19	1,133	200	1,333
Health Occupations	1200	38	1,410	2,116	3,526
Consumer Ed/Child Dev.	1300	34	1,692	564	2,256
Humanities	1500	86	7,642	849	8,491
Mathematics	1700	60	6,150	683	6,833
Physical Science	1900	20	1,074	1,611	2,685
Psychology	2000	20	1,544	81	1,625
Public Affairs/Services	2100	83	2,521	133	2,654
Social Science	2200	28	2,960	156	3,116
Commercial Services	3000	47	4,191	6,287	10,478
Interdisciplinary	4900	27	693	462	1,155
TOTAL		840	47,785	31,385	79,170

Source: Analysis, CCAF-320, The Maas Companies data base

* Class sections are projected on the basis of "net" number of sections. Excluded are off-campus work experience, combined and open enrollment courses, and sections with zero attendance.

Appendix

EDUCATIONAL ANALYSIS

TABLE E
PROJECTION OF LECTURE AND LABORATORY WSCH
BY INSTRUCTIONAL DISCIPLINE
15,000 STUDENTS

Instructional Discipline	TOPS CODE	# of "Net" Sections*	Lecture WSCH	Laboratory WSCH	Total WSCH
Biological Science	0400	44	3,731	5,596	9,327
Business / Mgt.	0500	138	10,557	1,863	12,420
Communications	0600	3	338	85	423
Computer Info. Systems	0700	156	8,970	8,970	17,940
Education/PE	0800	81	2,329	6,986	9,315
Engineering/Tech	0900	62	1,722	3,198	4,920
Fine/Applied Arts	1000	137	4,430	6,646	11,076
Foreign Language	1100	30	1,788	316	2,104
Health Occupations	1200	57	2,116	3,173	5,289
Consumer Ed/Child Dev.	1300	54	4,455	1,485	5,940
Humanities	1500	131	11,597	1,288	12,885
Mathematics	1700	96	9,839	1,093	10,932
Physical Science	1900	32	1,691	2,537	4,228
Psychology	2000	33	2,548	134	2,682
Public Affairs/Services	2100	125	10,408	548	10,956
Social Science	2200	44	4,600	242	4,842
Commercial Services	3000	71	6,287	9,430	15,717
Interdisciplinary	4900	45	2,484	1,656	4,140
TOTAL		1,339	89,890	55,246	145,136

Source: Maas Companies Projections

* Class sections are projected on the basis of "net" number of sections. Excluded are off-campus, work experience, combined and open enrollment courses, and sections with zero attendance.

Appendix

EDUCATIONAL ANALYSIS

TABLE F
PROJECTION OF LECTURE AND LABORATORY
ASSIGNABLE SQUARE FEET FOR 15,000 STUDENTS

Instructional Discipline	TOPS CODE	# of Sections	Lecture ASF	Laboratory ASF	Total ASF
Biological Science	0400	44	1,600	13,039	14,639
Business / Mgt.	0500	138	4,529	2,385	6,914
Communications	0600	3	145	182	327
Computer Info. Systems	0700	156	3,848	15,339	19,187
Education/PE	0800	81	999	22,425	23,424
Engineering/Tech	0900	62	739	15,350	16,089
Fine/Applied Arts	1000	137	1,900	17,080	18,980
Foreign Language	1100	30	767	474	1,241
Health Occupations	1200	57	908	6,790	7,698
Consumer Ed/Child Dev.	1300	54	1,911	1,488	3,399
Humanities	1500	131	4,975	1,932	6,907
Mathematics	1700	96	4,221	1,640	5,861
Physical Science	1900	32	725	6,520	7,245
Psychology	2000	33	1,093	201	1,294
Public Affairs/Services	2100	125	4,465	1,173	5,638
Social Science	2200	44	1,973	363	2,336
Commercial Services	3000	71	2,697	20,180	22,877
Interdisciplinary	4900	45	1,066	4,256	5,322
TOTAL		1,339	38,561	130,817	169,378

Source: Maas Companies Projections

* Class sections are projected on the basis of "net" number of sections. Excluded are off-campus, work experience, combined and open enrollment courses, and sections with zero attendance.

Appendix

EDUCATIONAL ANALYSIS

**TABLE G
LOS MEDANOS COLLEGE
BUILDING REQUIREMENTS
TO MEET NEEDS OF 15,000 STUDENTS**

Space Category	Description	Current Space Inventory	ASF for 15,000 Students	Additional ASF Needed for 15,000 Students
100	Classroom	21,281	38,561	17,280
210-230	Laboratory/Lab. Service	65,309	130,817	65,508
235-255	Non-Class Laboratory	181	1,425	1,244
300	Office/Conference	26,309	44,025	17,716
400	Library	11,098	32,810	21,712
510	Armory	48	48	0
520-525	Physical Education (Indoor)	33,028	35,000	1,972
530-535	Instructional Media (AV/TV)	3,494	7,330	3,836
540-555	Child Care, Clinic	3,513	6,000	2,487
610-625	Assembly/Exhibition	4,186	15,000	10,814
630-635	Food Service	7,968	9,000	1,032
650-655	Lounge/Lounge Service	1,088	6,530	5,442
660-665	Bookstore	4,321	9,500	5,179
670-690	Meeting /Recreation	3,455	5,000	1,545
710-715	Data Processing/Comp	829	4,000	3,171
720-770	Physical Plant	8,561	9,700	1,139
800	Health Service	0	1,200	1,200
TOTAL		194,669	355,946	161,277

Source: Space Inventory and Report 17, Chancellor's Office, California Community Colleges and Maas Companies calculations based on California Code of Regulations Title 5, Chapter 8 Section 57028

Appendix

EDUCATIONAL ANALYSIS

**TABLE H
LOS MEDANOS COLLEGE
BUILDING REQUIREMENTS
TO MEET NEEDS OF 10,000 STUDENTS**

Space Category	Description	Current Space Inventory	ASF for 10,000 Students	Additional ASF Needed for 10,000 Students
100	Classroom	21,281	25,707	4,426
210-230	Laboratory/Lab. Service	65,309	87,211	21,902
235-255	Non-Class Laboratory	181	1,425	1,244
300	Office/Conference	26,309	29,350	3,041
400	Library	11,098	21,873	10,775
510	Armory	48	48	0
520-525	Physical Education (Indoor)	33,028	35,000	1,972
530-535	Instructional Media (AV/TV)	3,494	4,887	1,393
540-555	Child Care, Clinic	3,513	6,000	2,487
610-625	Assembly/Exhibition	4,186	10,000	5,814
630-635	Food Service	7,968	8,000	32
650-655	Lounge/Lounge Service	1,088	4,353	3,265
660-665	Bookstore	4,321	6,000	1,679
670-690	Meeting /Recreation	3,455	3,500	45
710-715	Data Processing/Comp	829	3,000	2,171
720-770	Physical Plant	8,561	9,000	439
800	Health Service	0	1,200	1,200
TOTAL		194,669	256,554	61,885

Source: Space Inventory and Report 17, Chancellor's Office, California Community Colleges and Maas Companies calculations based on California Code of Regulations Title 5, Chapter 8 Section 57028

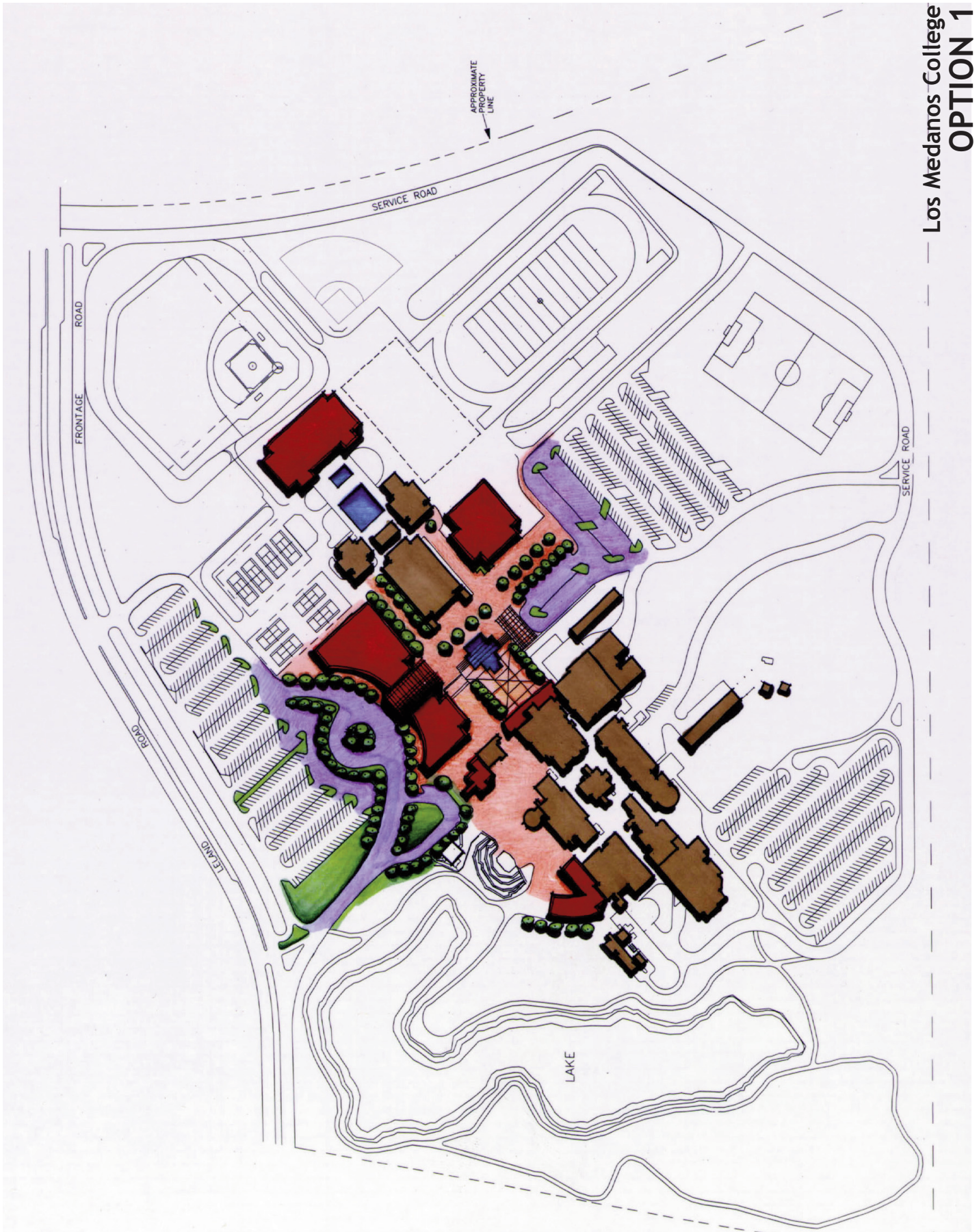
Appendix

EDUCATIONAL ANALYSIS

**TABLE I
LOS MEDANOS COLLEGE
BUILDING REQUIREMENTS
TO MEET NEEDS OF 12,000 STUDENTS**

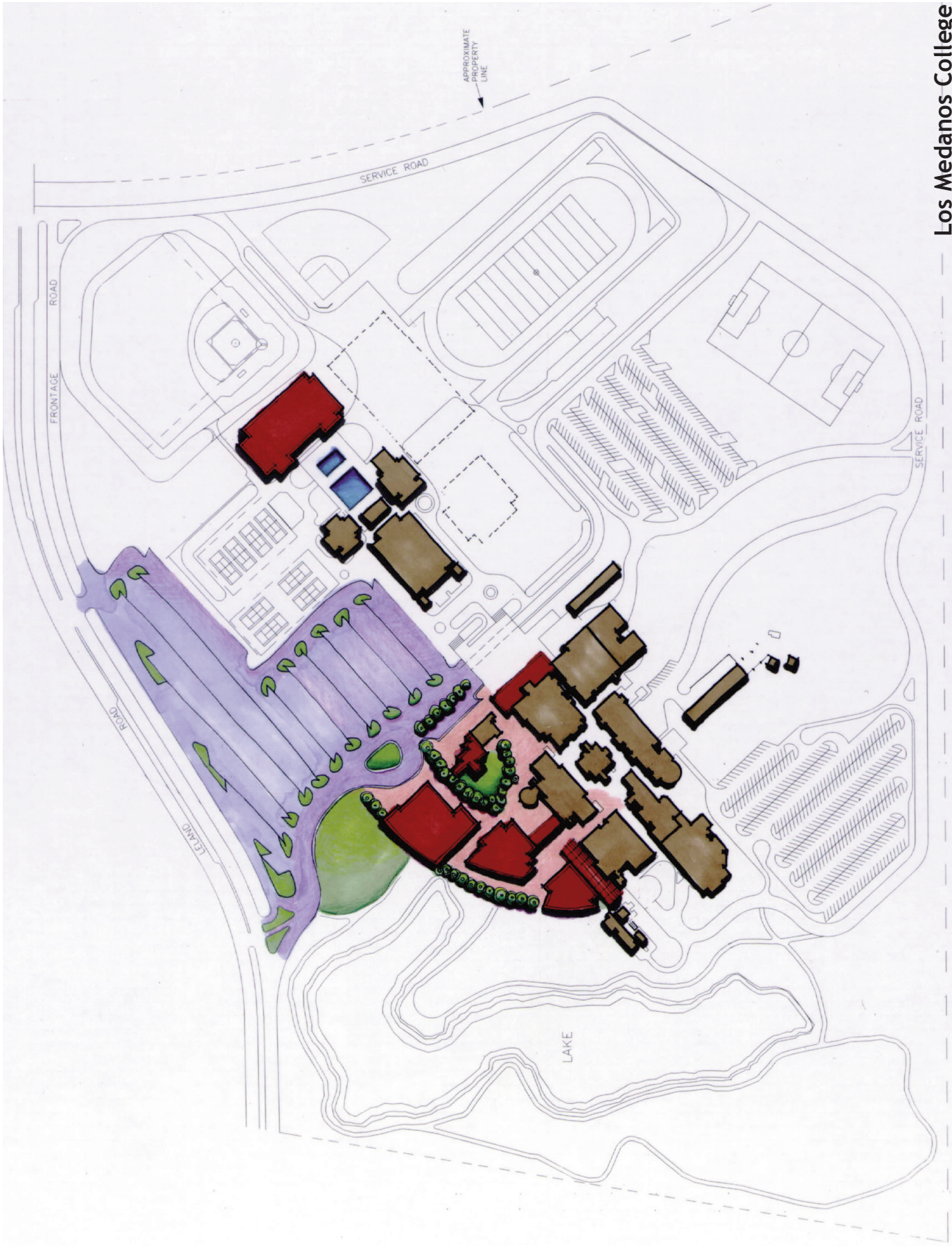
Space Category	Description	Current Space Inventory	ASF for 12,000 Students	Additional ASF Needed for 12,000 Students
100	Classroom	21,281	30,849	9,568
210-230	Laboratory/Lab. Service	65,309	104,654	39,345
235-255	Non-Class Laboratory	181	1,425	1,244
300	Office/Conference	26,309	35,220	8,911
400	Library	11,098	26,248	15,150
510	Armory	48	48	0
520-525	Physical Education (Indoor)	33,028	35,000	1,972
530-535	Instructional Media (AV/TV)	3,494	5,864	2,370
540-555	Child Care, Clinic	3,513	6,000	2,487
610-625	Assembly/Exhibition	4,186	12,000	7,814
630-635	Food Service	7,968	8,200	232
650-655	Lounge/Lounge Service	1,088	5,224	4,136
660-665	Bookstore	4,321	7,600	3,279
670-690	Meeting /Recreation	3,455	4,000	545
710-715	Data Processing/Comp	829	3,200	2,371
720-770	Physical Plant	8,561	9,000	439
800	Health Service	0	1,200	1,200
TOTAL		194,669	295,732	101,063

Source: Space Inventory and Report 17, Chancellor's Office, California Community Colleges and Maas Companies calculations based on California Code of Regulations Title 5, Chapter 8 Section 57028



Los Medanos College
OPTION 1





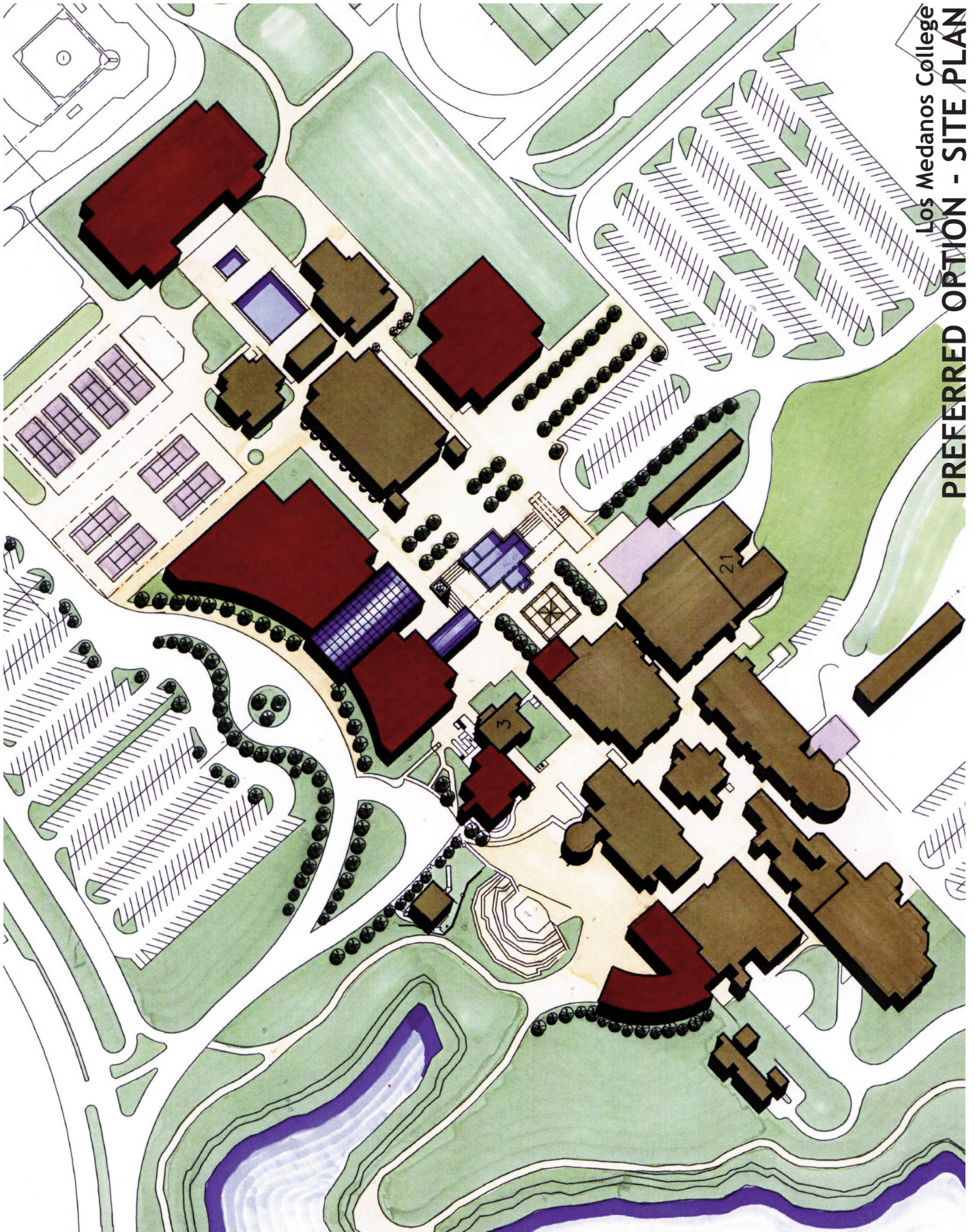
Los Medanos College
OPTION 2





Los Medanos College
OPTION 3





Los Medanos College
PREFERRED OPTION - SITE PLAN

