



Contra Costa Community College District

**ACCREDITATION INFORMATION FOR
LOS MEDANOS COLLEGE
(Including Brentwood Center)**

August 2013

District Research
Contra Costa Community College District
500 Court Street
Martinez, California 94553

TABLE OF CONTENTS

| | |
|---|----|
| LEVEL 1 ACCREDITATION TABLES – AGGREGATED BY MEASURE AND INSTRUCTION METHOD | 1 |
| All Courses | 2 |
| Basic Skills Courses | 2 |
| Career and Technical Education (CTE) Courses | 3 |
| Degree Applicable Courses | 3 |
| Awards | 3 |
| | |
| FIGURES..... | 4 |
| Course Success Rate by Type of Course and Instruction Method..... | 5 |
| Course Success Rate by Demographic Group..... | 6 |
| Basic Skills Course Success Rate by Demographic Group..... | 7 |
| Career and Technical Education (CTE) Course Success Rate by Demographic Group | 8 |
| Degree Applicable Course Success Rate by Demographic Group | 9 |
| Persistence Rates by Type of Course..... | 10 |
| Fall-to-Spring Persistence Rate for All Courses by Demographic Group..... | 11 |
| Fall-to-Fall Persistence Rate for All Courses by Demographic Group | 12 |
| Number of Awards by Year by Demographic Group | 13 |
| | |
| LEVEL 2 ACCREDITATION TABLES – AGGREGATED BY MEASURE AND DEMOGRAPHIC GROUP | 14 |
| All Courses by Gender | 15 |
| All Courses by Age Group | 15 |
| All Courses by Race/Ethnicity | 16 |
| Basic Skills Courses by Gender | 17 |
| Basic Skills Courses by Age Group | 17 |
| Basic Skills Courses by Race/Ethnicity | 18 |
| Career and Technical Education (CTE) Courses by Gender | 19 |
| Career and Technical Education (CTE) Courses by Age Group | 19 |
| Career and Technical Education (CTE) Courses by Race/Ethnicity..... | 20 |
| Degree Applicable Courses by Gender | 21 |
| Degree Applicable Courses by Age Group..... | 21 |
| Degree Applicable Courses by Race/Ethnicity..... | 22 |

| | |
|-------------------------------------|----|
| Persistence by Gender..... | 23 |
| Persistence by Age Group | 23 |
| Persistence by Race/Ethnicity | 24 |
| Awards by Gender | 25 |
| Awards by Age Group..... | 25 |
| Awards by Race/Ethnicity..... | 25 |

| | |
|--|----|
| LEVEL 3 ACCREDITATION TABLES – AGGREGATED BY MEASURE, DEMOGRAPHIC GROUP AND INSTRUCTION METHOD | 26 |
| All Courses by Gender and Instruction Method..... | 27 |
| All Courses by Age Group and Instruction Method..... | 28 |
| All Courses by Race/Ethnicity and Instruction Method..... | 29 |
| Basic Skills Courses by Gender and Instruction Method..... | 30 |
| Basic Skills Courses by Age Group and Instruction Method..... | 31 |
| Basic Skills Courses by Race/Ethnicity and Instruction Method..... | 32 |
| Career and Technical Education (CTE) Courses by Gender and Instruction Method..... | 33 |
| Career and Technical Education (CTE) Courses by Age Group and Instruction Method..... | 34 |
| Career and Technical Education (CTE) Courses by Race/Ethnicity and Instruction Method | 35 |
| Degree Applicable Courses by Gender and Instruction Method..... | 36 |
| Degree Applicable Courses by Age Group and Instruction Method | 37 |
| Degree Applicable Courses by Race/Ethnicity and Instruction Method | 38 |
| Persistence by Gender and Instruction Method | 39 |
| Persistence by Age Group and Instruction Method | 40 |
| Persistence by Race/Ethnicity and Instruction Method | 41 |
| Awards by Gender and Type of Award..... | 42 |
| Awards by Age Group and Type of Award | 42 |
| Awards by Race/Ethnicity and Type of Award | 42 |
| APPENDIX A – Operational Definitions | 43 |

LEVEL 1 ACCREDITATION TABLES – AGGREGATED BY MEASURE AND INSTRUCTION METHOD

Information in this section:

- Success Rate by Traditional and Online Instruction Methods for All Courses, Basic Skill Courses, CTE Courses and Degree Applicable Courses
- Retention Rate by Traditional and Online Instruction Methods for All Courses, Basic Skill Courses, CTE Courses and Degree Applicable Courses
- Fall-to-Spring Persistence Rate by Traditional and Online Instruction Methods for All Courses, Basic Skill Courses, CTE Courses and Degree Applicable Courses
- Fall-to-Fall Persistence Rate by Traditional and Online Instruction Methods for All Courses, Basic Skill Courses, CTE Courses and Degree Applicable Courses
- Total Success Rate for All Courses, Basic Skill Courses, CTE Courses and Degree Applicable Courses
- Total Retention Rate for All Courses, Basic Skill Courses, CTE Courses and Degree Applicable Courses
- Total Fall-to-Spring Persistence Rate for All Courses, Basic Skill Courses, CTE Courses and Degree Applicable Courses
- Total Fall-to-Fall Persistence Rate for All Courses, Basic Skill Courses, CTE Courses and Degree Applicable Courses
- Awards by Type
- Total Awards

Los Medanos College including Brentwood Center
Level 1 Accrediation Tables - Aggregated by Measure and Instruction Method

| ALL COURSES | Instr. Method | 2007FA | 2008FA | 2009FA | 2010FA | 2011FA | 2012FA |
|---------------------------------|---------------|--------|--------|--------|--------|--------|--------|
| Success Rate | Traditional | 68% | 69% | 69% | 69% | 72% | 71% |
| | Online | 58% | 57% | 60% | 62% | 61% | 63% |
| Retention Rate | Traditional | 84% | 85% | 83% | 83% | 86% | 86% |
| | Online | 79% | 79% | 78% | 78% | 81% | 81% |
| Fall-to-Spring Persistence Rate | Traditional | 63% | 67% | 67% | 70% | 71% | 70% |
| | Online | 65% | 67% | 73% | 72% | 73% | 71% |
| Fall-to-Fall Persistence Rate | Traditional | 46% | 50% | 48% | 49% | 51% | na |
| | Online | 47% | 49% | 53% | 50% | 51% | na |
| Success Rate | Total | 67% | 69% | 69% | 69% | 71% | 70% |
| Retention Rate | Total | 83% | 84% | 83% | 82% | 86% | 85% |
| Fall-to-Spring Persistence Rate | Total | 62% | 66% | 67% | 69% | 70% | 69% |
| Fall-to-Fall Persistence Rate | Total | 45% | 49% | 48% | 49% | 51% | na |

| BASIC SKILLS COURSES | Instr. Method | 2007FA | 2008FA | 2009FA | 2010FA | 2011FA | 2012FA |
|---------------------------------|---------------|--------|--------|--------|--------|--------|--------|
| Success Rate | Traditional | 56% | 61% | 64% | 61% | 65% | 60% |
| | Online | 67% | 68% | 72% | 57% | 61% | 55% |
| Retention Rate | Traditional | 80% | 82% | 82% | 79% | 83% | 80% |
| | Online | 83% | 89% | 88% | 83% | 76% | 75% |
| Fall-to-Spring Persistence Rate | Traditional | 67% | 72% | 68% | 70% | 70% | 68% |
| | Online | 72% | 65% | 78% | 56% | 71% | 70% |
| Fall-to-Fall Persistence Rate | Traditional | 50% | 56% | 50% | 50% | 54% | na |
| | Online | 52% | 57% | 50% | 41% | 50% | na |
| Success Rate | Total | 57% | 61% | 64% | 61% | 65% | 60% |
| Retention Rate | Total | 80% | 82% | 82% | 79% | 82% | 80% |
| Fall-to-Spring Persistence Rate | Total | 67% | 72% | 68% | 70% | 70% | 68% |
| Fall-to-Fall Persistence Rate | Total | 50% | 56% | 50% | 50% | 54% | na |

See Addendum A for data and group definitions.

Los Medanos College including Brentwood Center
Level 1 Accrediation Tables - Aggregated by Measure and Instruction Method

| CTE COURSES | Instr. Method | 2007FA | 2008FA | 2009FA | 2010FA | 2011FA | 2012FA |
|---------------------------------|---------------|--------|--------|--------|--------|--------|--------|
| Success Rate | Traditional | 75% | 74% | 75% | 72% | 74% | 73% |
| | Online | 56% | 54% | 57% | 60% | 59% | 63% |
| Retention Rate | Traditional | 89% | 89% | 88% | 86% | 87% | 87% |
| | Online | 82% | 82% | 77% | 79% | 82% | 82% |
| Fall-to-Spring Persistence Rate | Traditional | 58% | 63% | 65% | 68% | 70% | 67% |
| | Online | 57% | 64% | 69% | 67% | 68% | 65% |
| Fall-to-Fall Persistence | Traditional | 41% | 45% | 41% | 46% | 48% | na |
| | Online | 39% | 44% | 47% | 45% | 46% | na |
| Success Rate | Total | 73% | 72% | 73% | 71% | 72% | 71% |
| Retention Rate | Total | 88% | 88% | 87% | 85% | 87% | 87% |
| Fall-to-Spring Persistence Rate | Total | 58% | 63% | 65% | 67% | 69% | 67% |
| Fall-to-Fall Persistence Rate | Total | 40% | 45% | 42% | 45% | 47% | na |

| DEGREE APPL. COURSES | Instr. Method | 2007FA | 2008FA | 2009FA | 2010FA | 2011FA | 2012FA |
|---------------------------------|---------------|--------|--------|--------|--------|--------|--------|
| Success Rate | Traditional | 68% | 69% | 69% | 70% | 73% | 72% |
| | Online | 58% | 56% | 60% | 62% | 61% | 63% |
| Retention Rate | Traditional | 83% | 84% | 83% | 83% | 86% | 86% |
| | Online | 79% | 79% | 77% | 78% | 81% | 81% |
| Fall-to-Spring Persistence Rate | Traditional | 65% | 69% | 69% | 71% | 71% | 71% |
| | Online | 65% | 67% | 73% | 72% | 73% | 71% |
| Fall-to-Fall Persistence | Traditional | 48% | 51% | 51% | 50% | 51% | na |
| | Online | 47% | 49% | 53% | 50% | 51% | na |
| Success Rate | Total | 67% | 68% | 68% | 69% | 72% | 71% |
| Retention Rate | Total | 83% | 84% | 82% | 83% | 86% | 86% |
| Fall-to-Spring Persistence Rate | Total | 64% | 68% | 68% | 70% | 71% | 70% |
| Fall-to-Fall Persistence Rate | Total | 47% | 50% | 50% | 49% | 51% | na |

| AWARDS | 2007-08 | 2008-09 | 2009-10 | 2010-11 | 2011-12 | 2012-13 |
|---|---------|---------|---------|---------|---------|---------|
| Less than 1-year certificate | 388 | 341 | 243 | 379 | 465 | 497 |
| At least 1 but less than 2-year certificate | 24 | 42 | 40 | 94 | 93 | 84 |
| Associates degree | 391 | 452 | 361 | 594 | 634 | 699 |
| Total | 803 | 835 | 644 | 1,067 | 1,192 | 1,280 |

See Addendum A for data and group definitions.

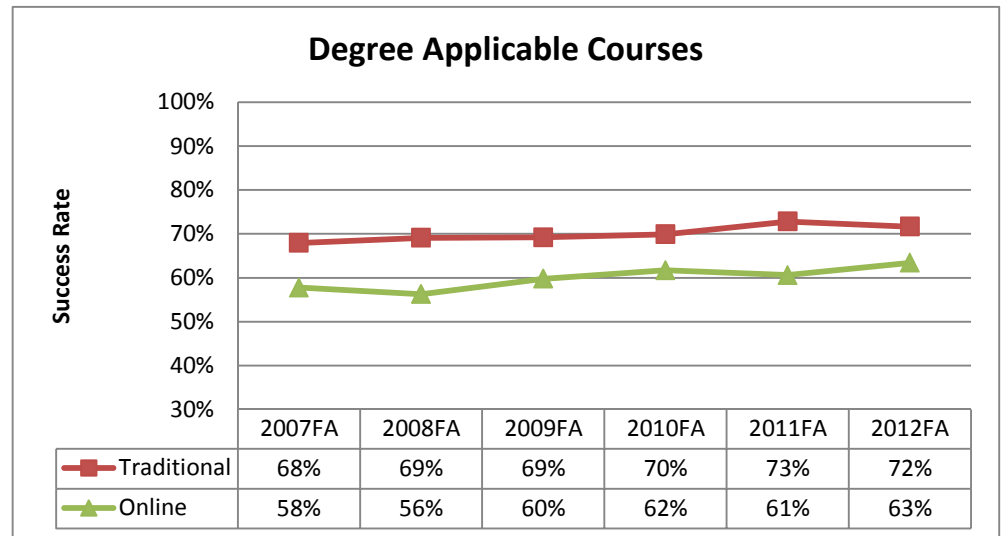
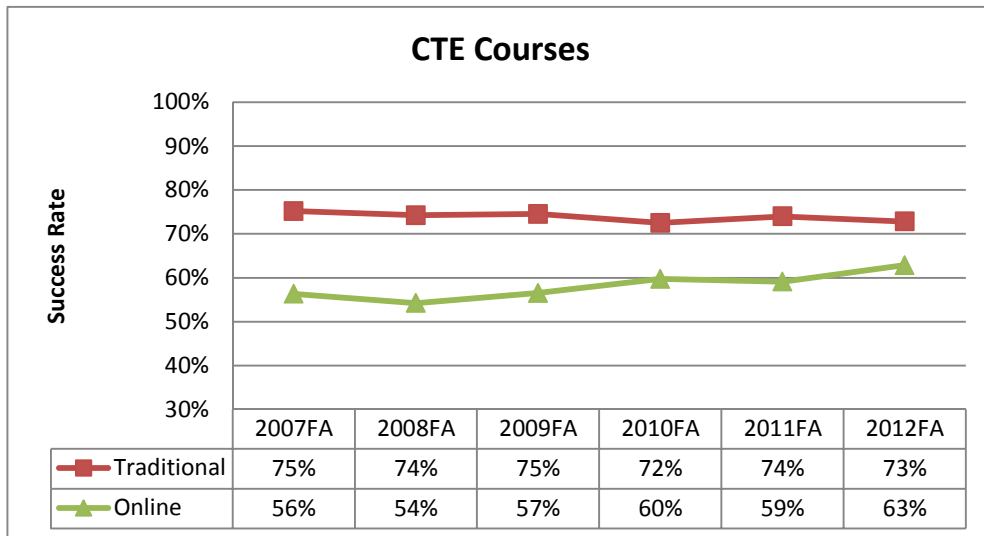
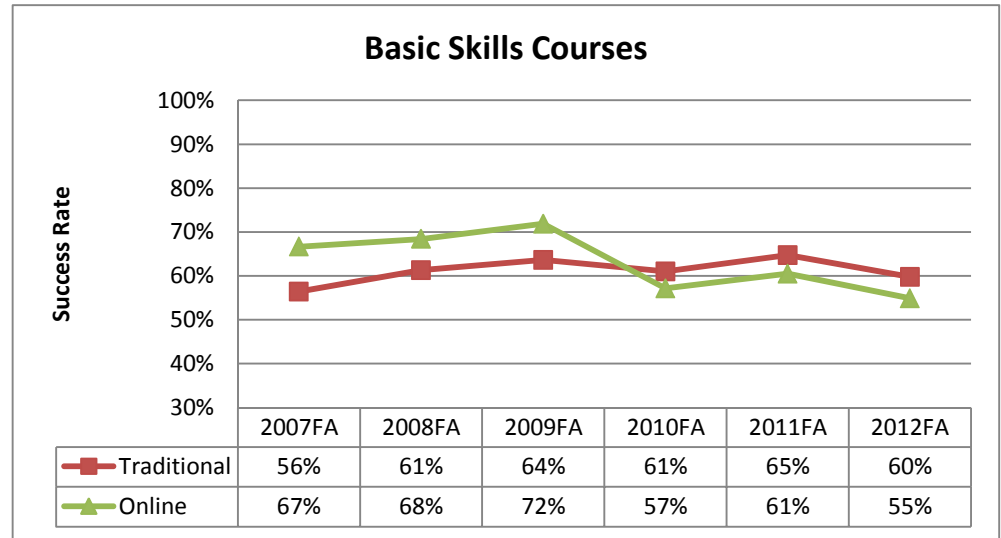
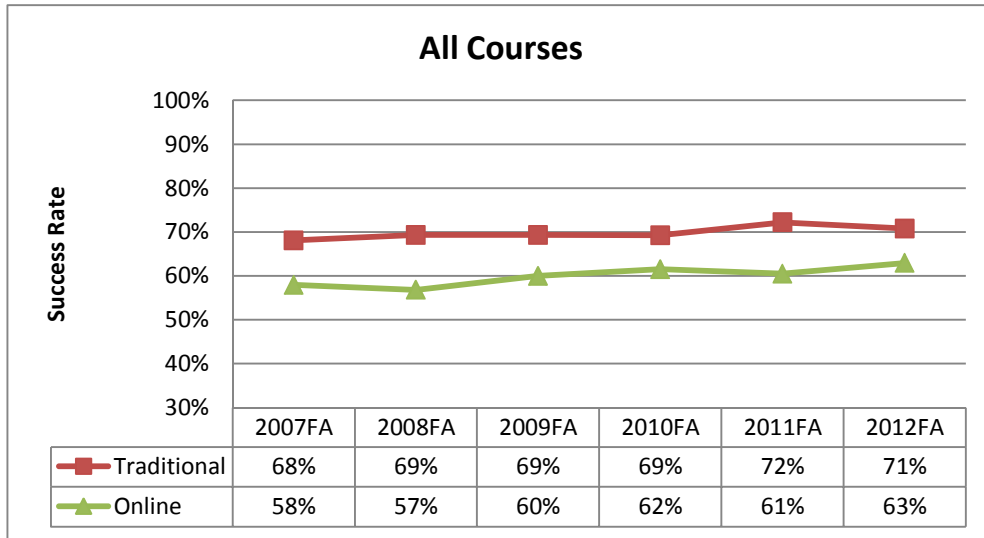
Source: District Research. Based on information from Datatel Colleague. 7/30/2013 JD

FIGURES

Information in this section:

- Course Success Rate by Type of Course and Instruction Method
- Course Success Rate by Demographic Group
- Basic Skills Course Success Rate by Demographic Group
- Career and Technical Education (CTE) Course Success Rate by Demographic Group
- Degree Applicable Course Success Rate by Demographic Group
- Persistence Rates by Type of Course
- Fall-to-Spring Persistence Rate for All Courses by Demographic Group
- Fall-to-Fall Persistence Rate for All Courses by Demographic Group
- Number of Awards by Year by Demographic Group

Los Medanos College including Brentwood Center Course Success Rate by Type of Course and Instruction Method



Course Success Rate: Percentage of students who receive a passing/satisfactory grade.

Numerator: A, B, C, CR, IA, IB, IC, IP, P

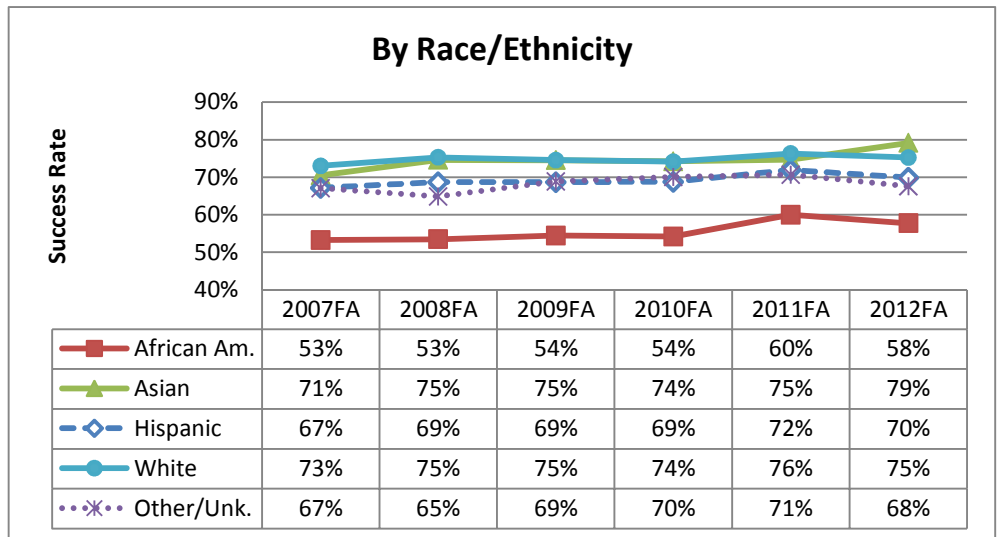
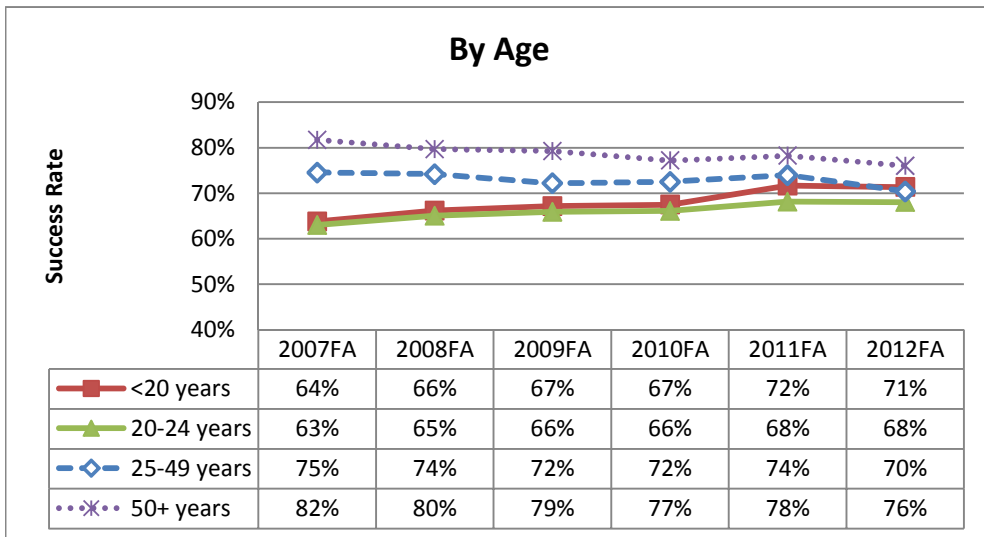
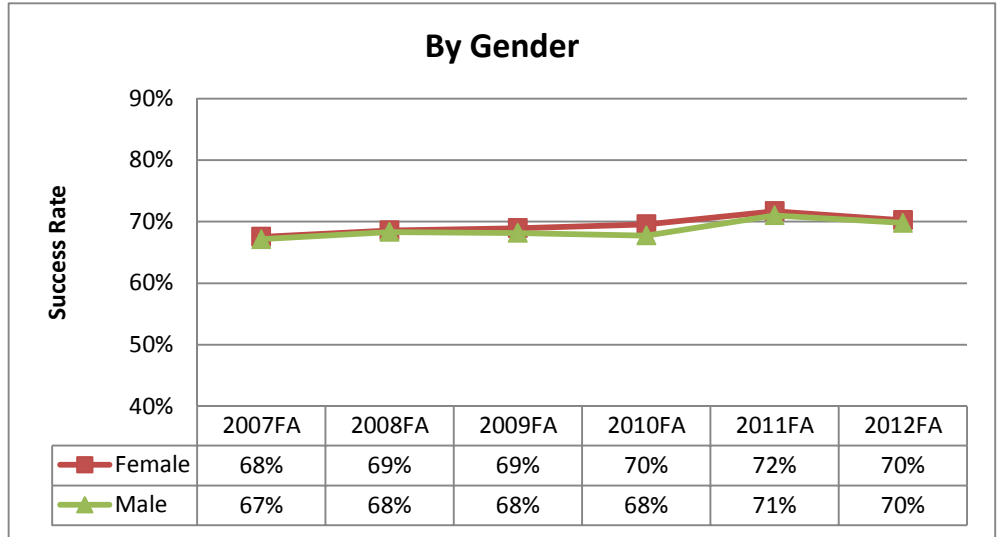
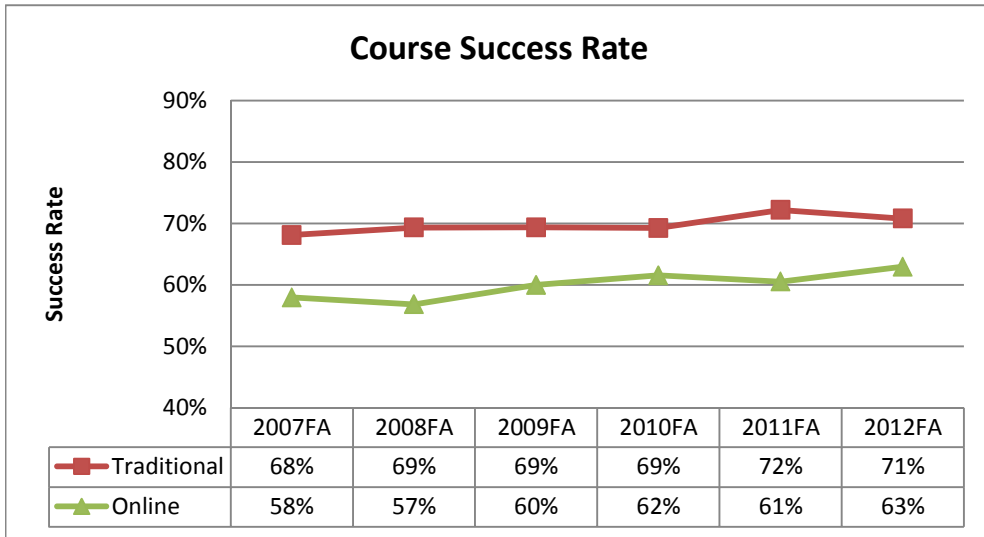
Denominator: A, B, C, CR, D, F, IA, IB, IC, ID, IF, IN, P, NC, NP, P, W

Excluded grade notations: MW, RD

See Addendum A for course and group definitions.

Source: District Research, CCCCD. Based on information from Colleague. Run date 7/30/2013 JD

Los Medanos College including Brentwood Center Course Success Rate by Demographic Group



Course Success Rate: Percentage of students who receive a passing/satisfactory grade.

Numerator: A, B, C, CR, IA, IB, IC, IP, P

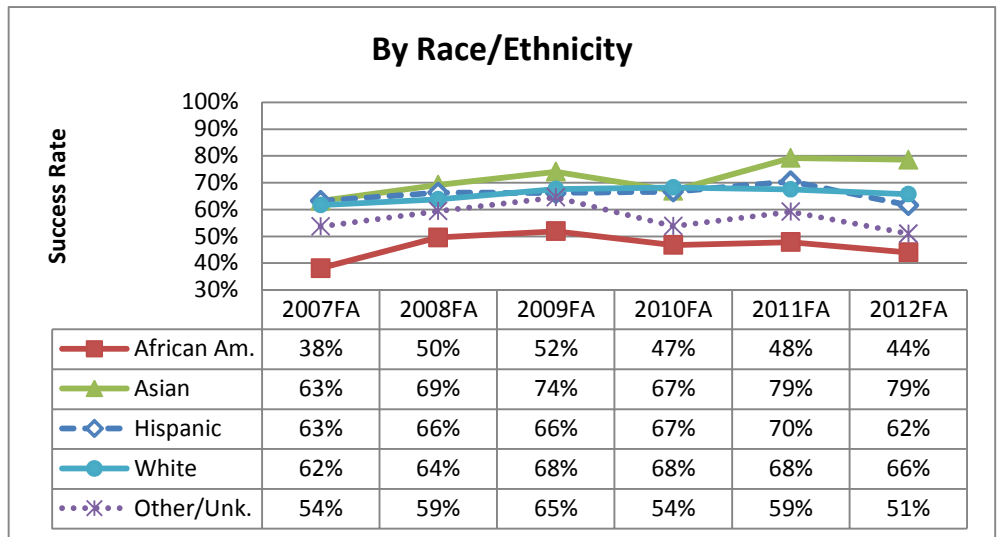
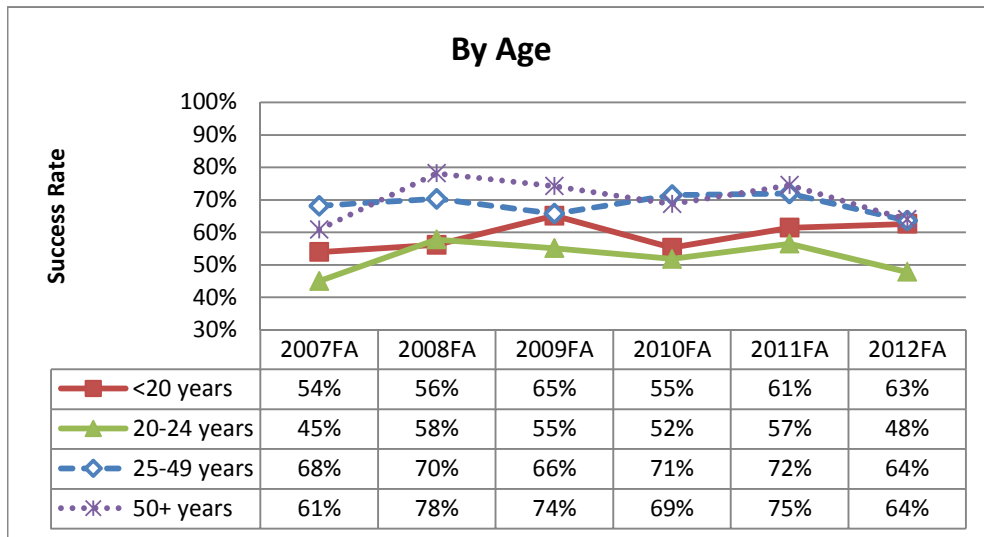
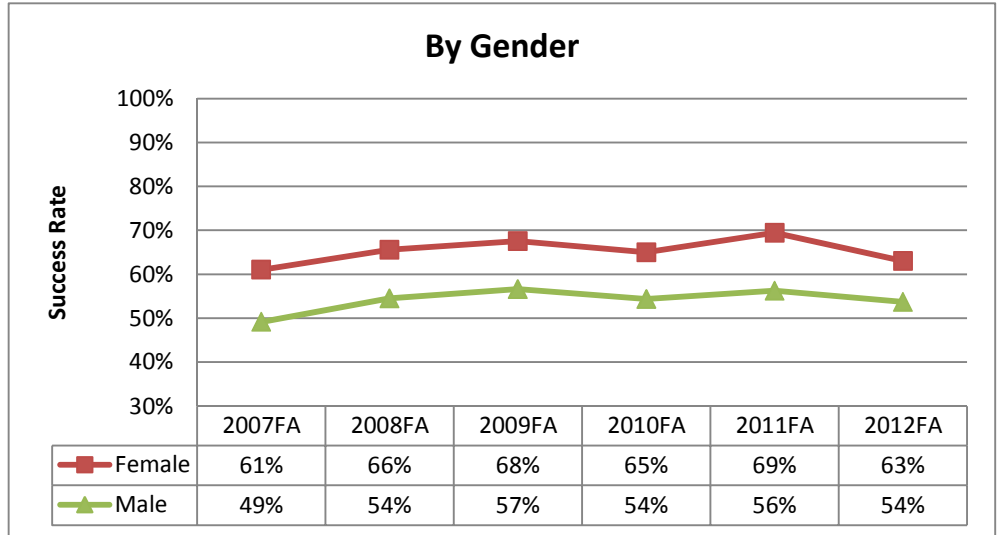
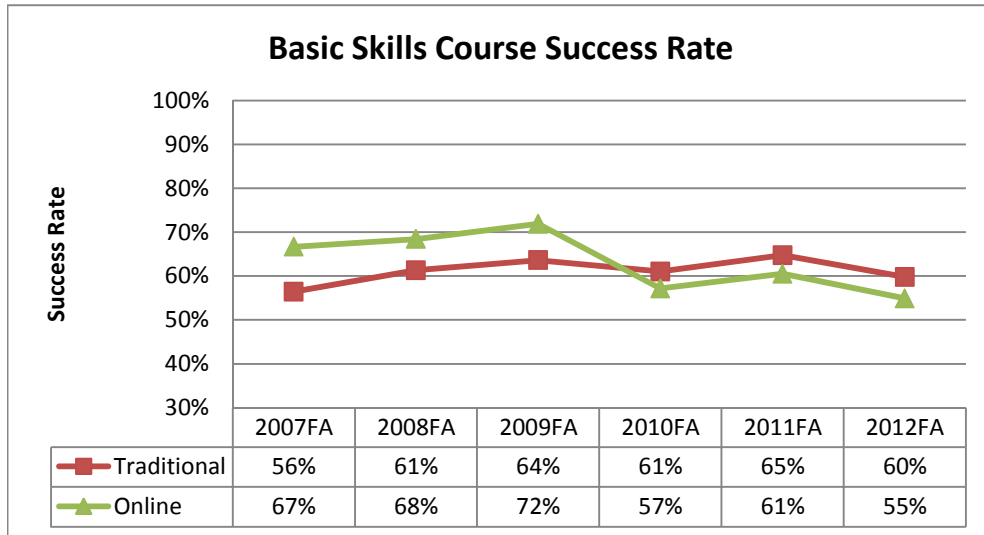
Denominator: A, B, C, CR, D, F, IA, IB, IC, ID, IF, IN, P, NC, NP, P, W

Excluded grade notations: MW, RD

See Addendum A for course and group definitions.

Source: District Research, CCCCD. Based on information from Colleague. Run date 7/30/2013 JD

Los Medanos College including Brentwood Center Basic Skills Course Success Rate by Demographic Group



Course Success Rate: Percentage of students who receive a passing/satisfactory grade.

Numerator: A, B, C, CR, IA, IB, IC, IP, P

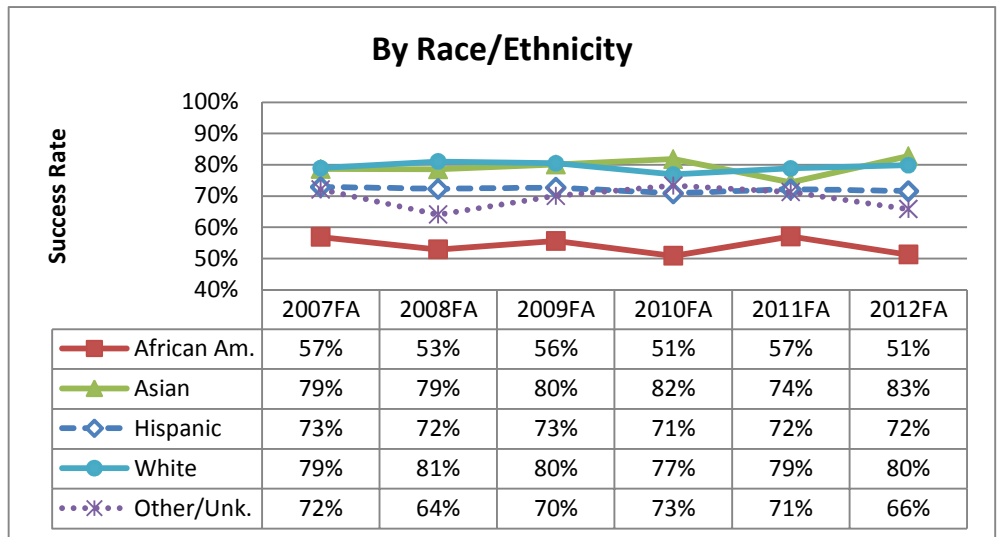
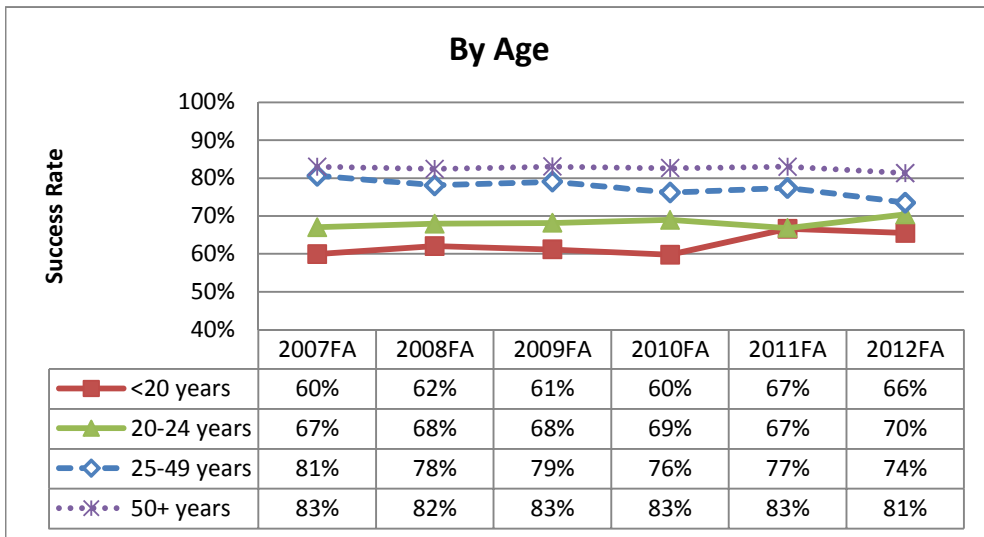
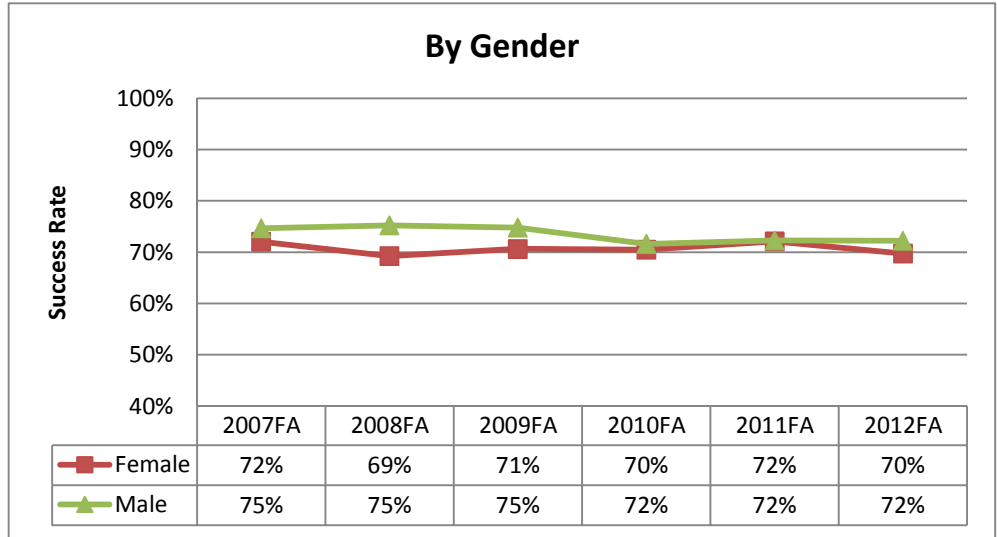
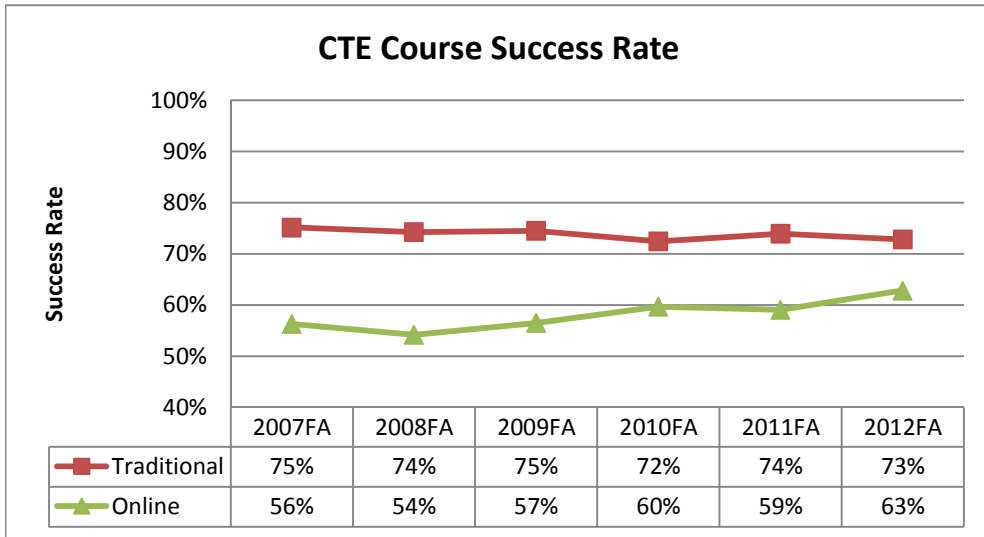
Denominator: A, B, C, CR, D, F, IA, IB, IC, ID, IF, IN, P, NC, NP, P, W

Excluded grade notations: MW, RD

See Addendum A for course and group definitions.

Source: District Research, CCCCD. Based on information from Colleague. Run date 7/30/2013 JD

Los Medanos College including Brentwood Center Career and Technical Education (CTE) Course Success Rate by Demographic Group



Course Success Rate: Percentage of students who receive a passing/satisfactory grade.

Numerator: A, B, C, CR, IA, IB, IC, IP, P

Denominator: A, B, C, CR, D, F, IA, IB, IC, ID, IF, IN, P, NC, NP, P, W

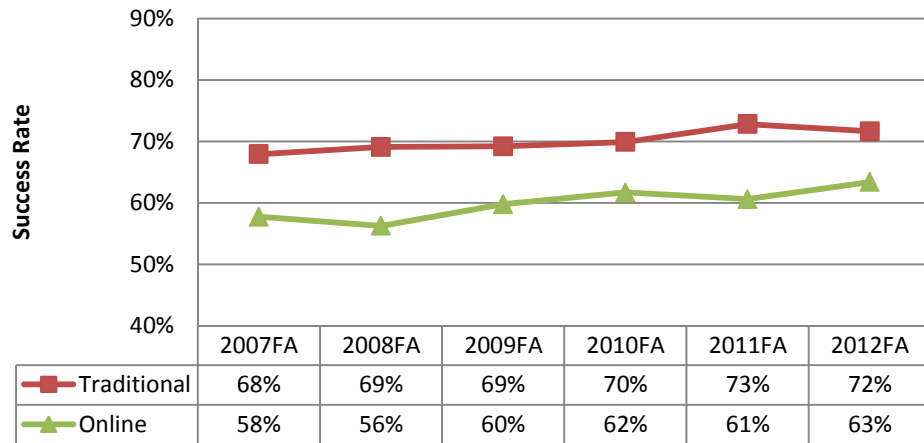
Excluded grade notations: MW, RD

See Addendum A for course and group definitions.

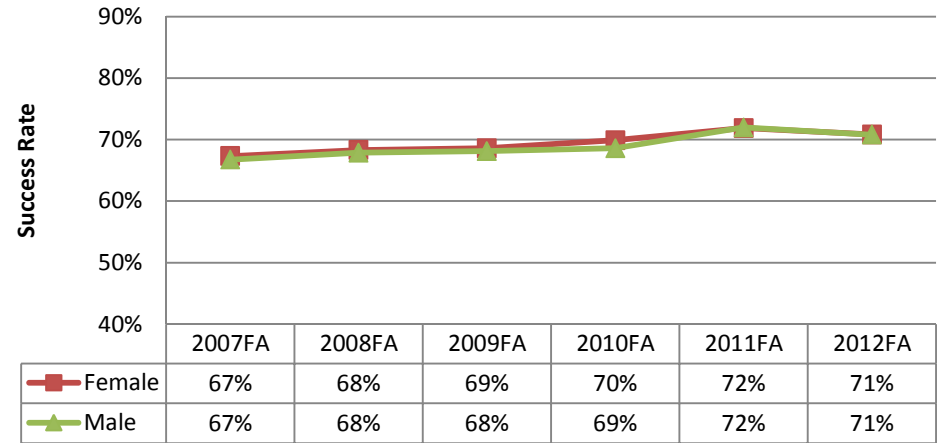
Source: District Research, CCCCD. Based on information from Colleague. Run date 7/30/2013 JD

Los Medanos College including Brentwood Center Degree Applicable Course Success Rate by Demographic Group

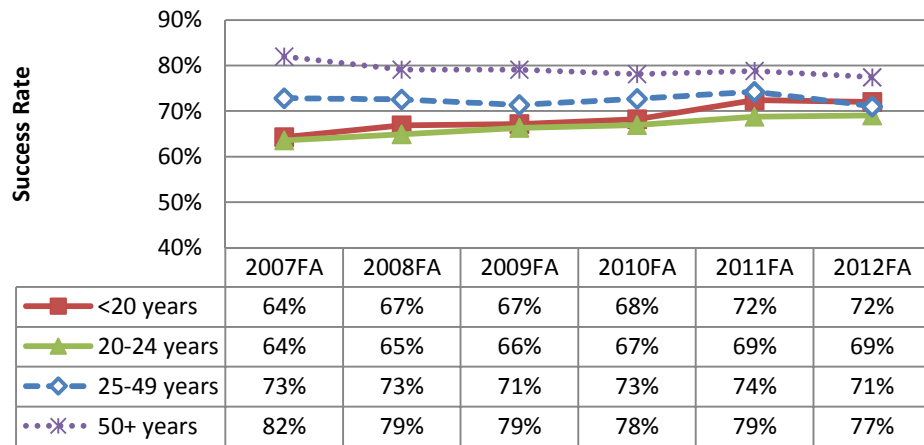
Degree Applicable Course Success Rate



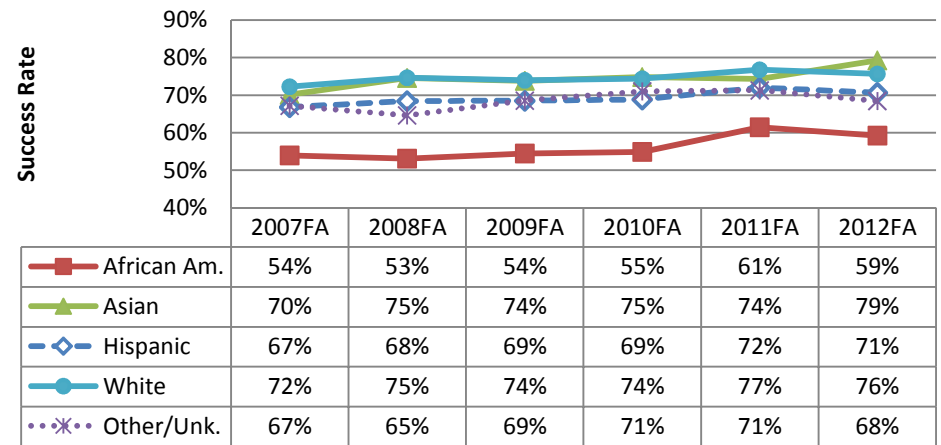
By Gender



By Age



By Race/Ethnicity



Course Success Rate: Percentage of students who receive a passing/satisfactory grade.

Numerator: A, B, C, CR, IA, IB, IC, IP, P

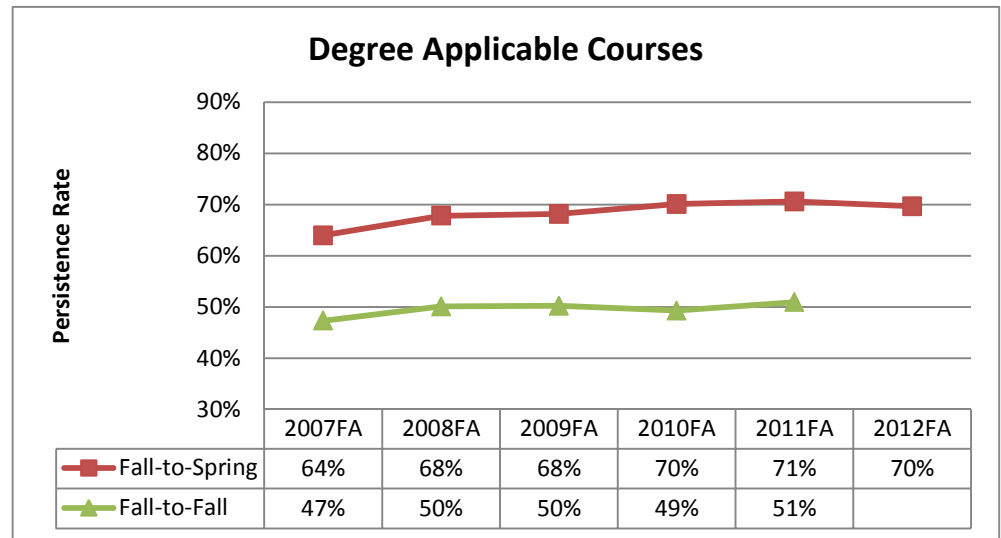
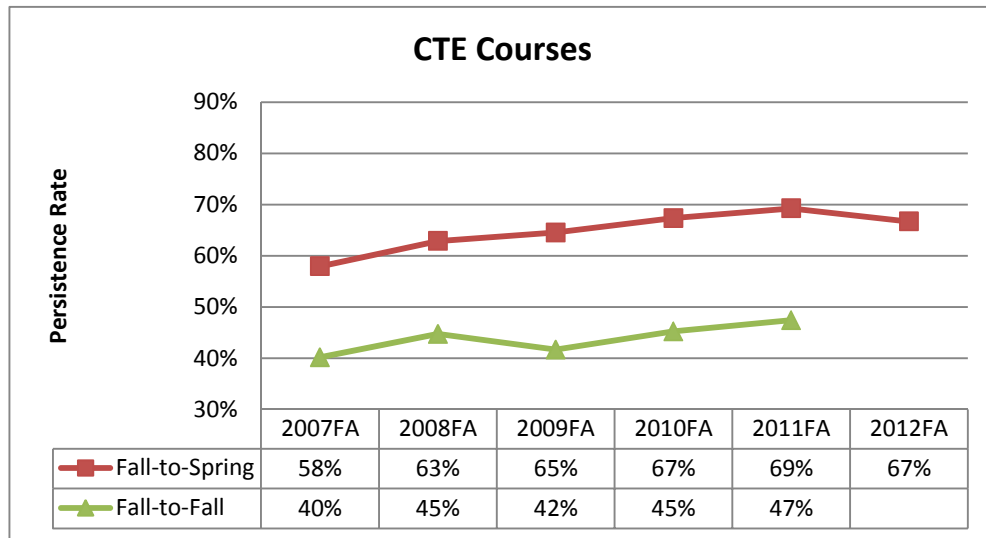
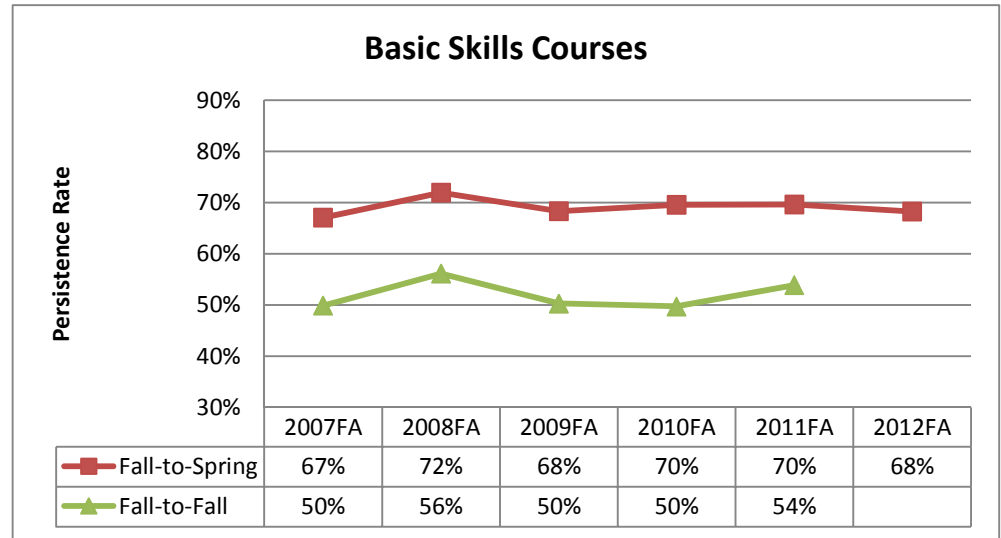
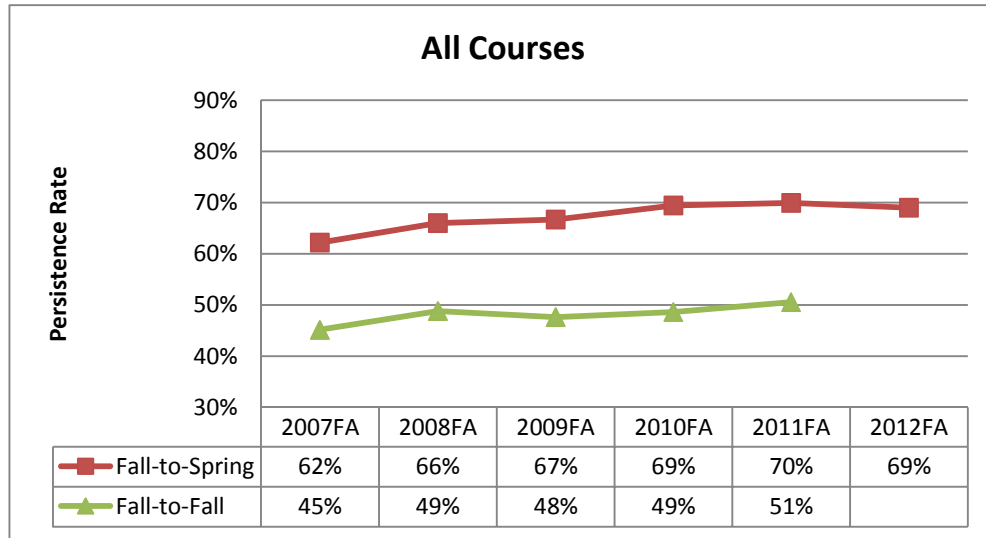
Denominator: A, B, C, CR, D, F, IA, IB, IC, ID, IF, IN, P, NC, NP, P, W

Excluded grade notations: MW, RD

See Addendum A for course and group definitions.

Source: District Research, CCCCD. Based on information from Colleague. Run date 7/30/2013 JD

Los Medanos College including Brentwood Center Persistence Rates by Type of Course



Persistence Rate: Percentage of students who are enrolled as census for an initial and a subsequent term.

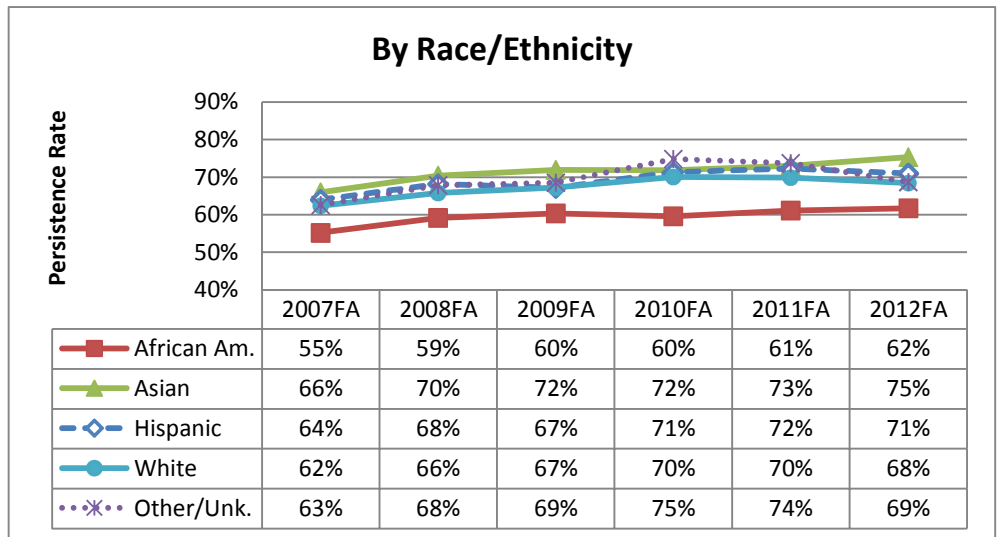
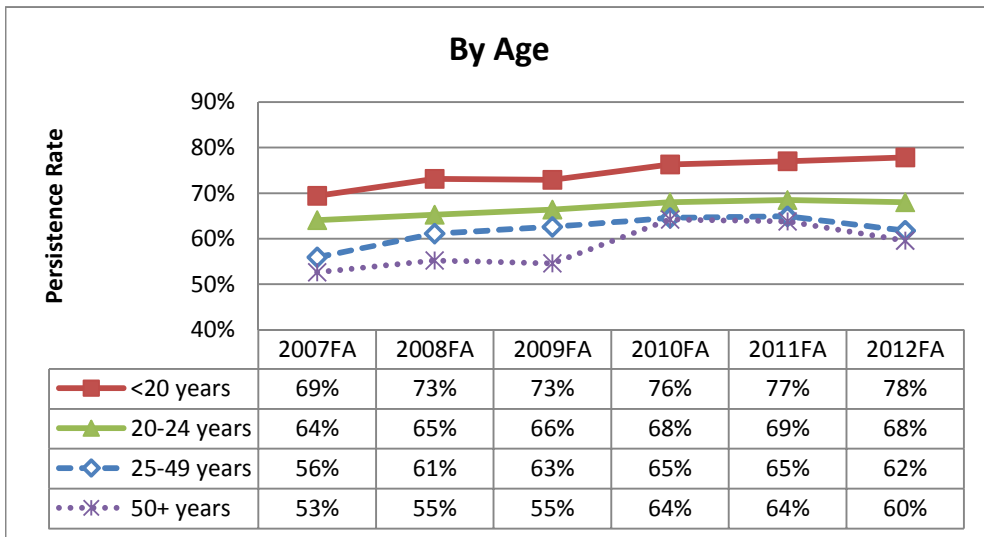
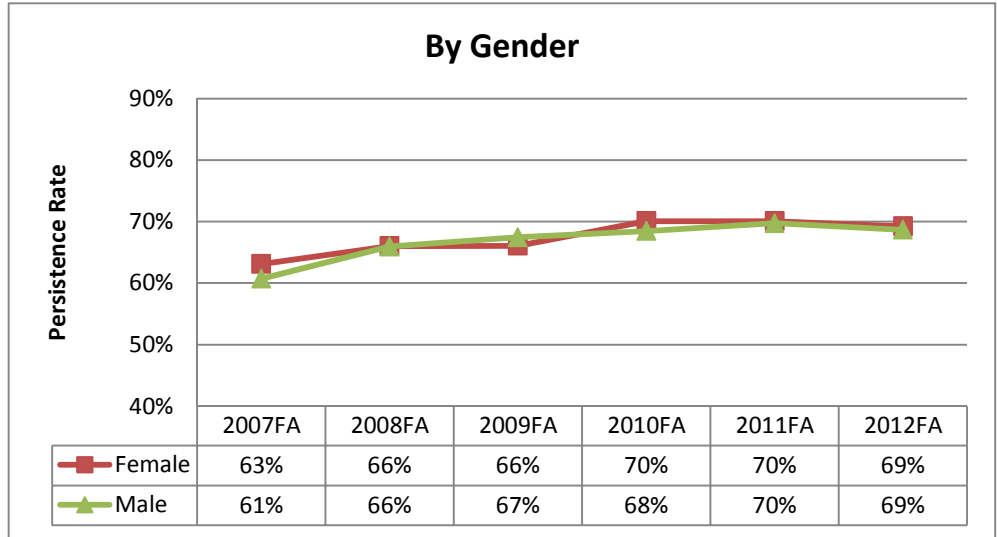
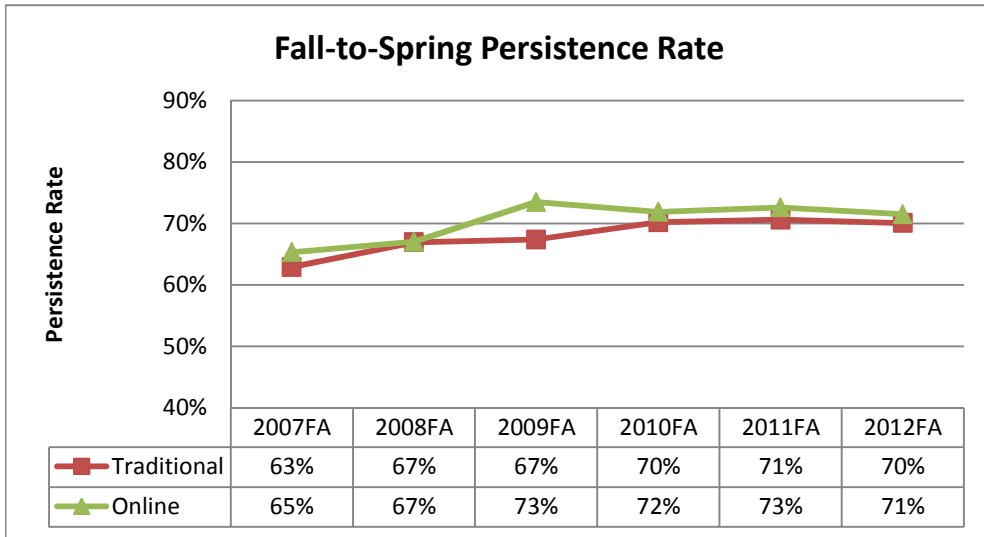
Numerator: The number of students who receive a grade of A, B, C, D, F, FW, I*, P/CR, NP/NC, RD, or W in at least one class in the subsequent primary term.

Denominator: The number of students who receive a grade of A, B, C, D, F, FW, I*, P/CR, NP/NC, RD, W in at least one class in the initial primary term.

See Addendum A for course and group definitions.

Source: District Research, CCCCD. Based on information from Colleague. Run date 7/30/2013 JD

Los Medanos College including Brentwood Center Fall-to-Spring Persistence Rate for All Courses by Demographic Group



Persistence Rate: Percentage of students who are enrolled as of census for an initial and a subsequent term.

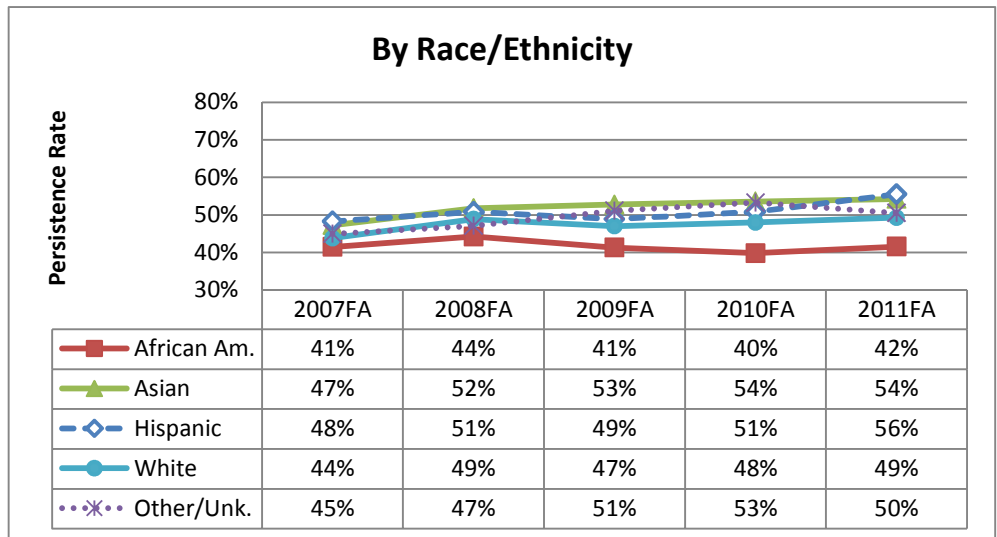
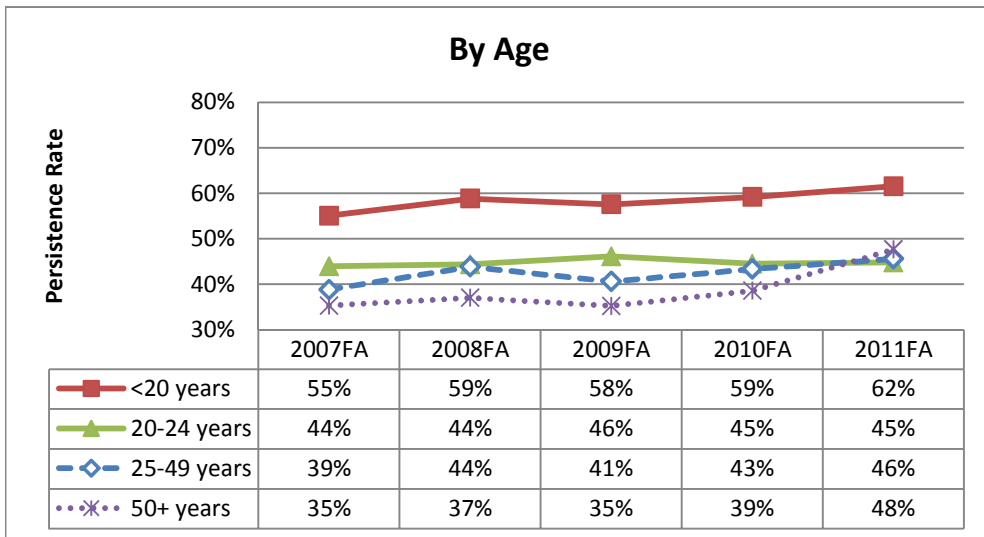
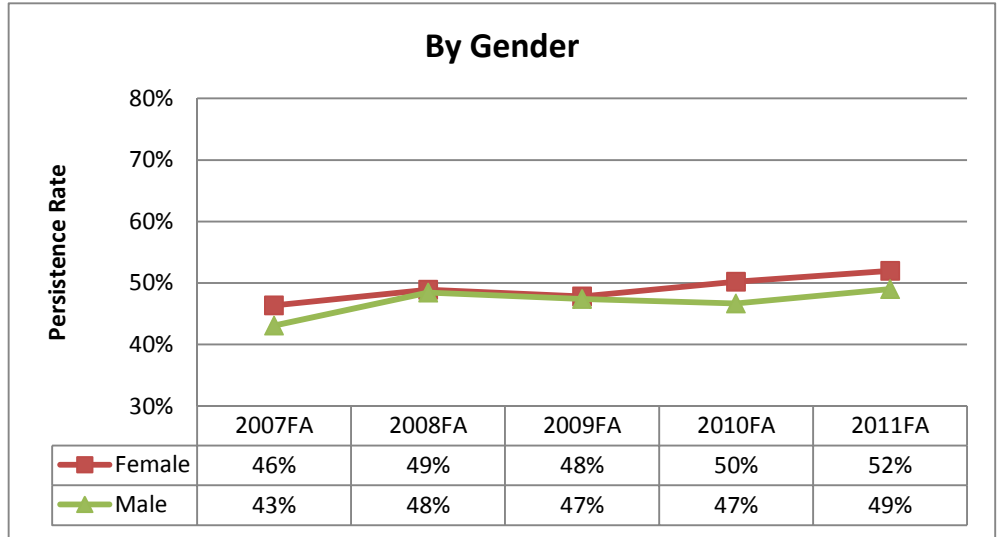
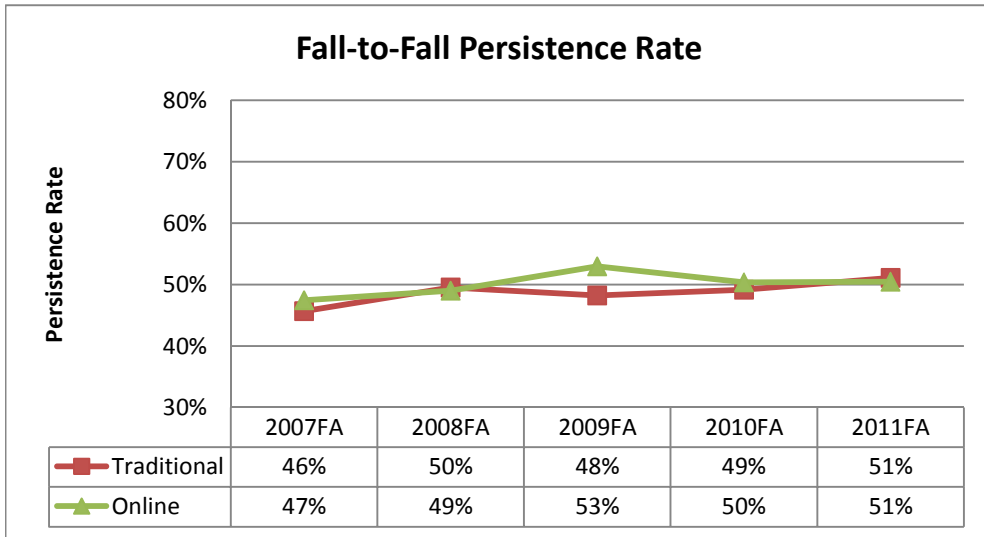
Numerator: The number of students who receive a grade of A, B, C, D, F, FW, I*, P/CR, NP/NC, RD, or W in at least one class in the subsequent primary term.

Denominator: The number of students who receive a grade of A, B, C, D, F, FW, I*, P/CR, NP/NC, RD, W in at least one class in the initial primary term.

See Addendum A for course and group definitions.

Source: District Research, CCCCD. Based on information from Colleague. Run date 7/30/2013 JD

Los Medanos College including Brentwood Center Fall-to-Fall Persistence Rate for All Courses by Demographic Group



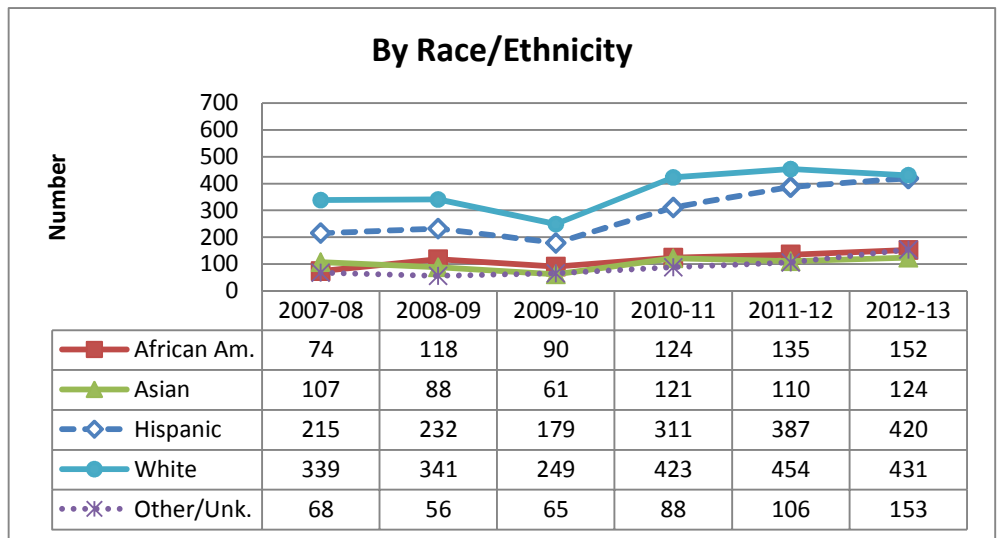
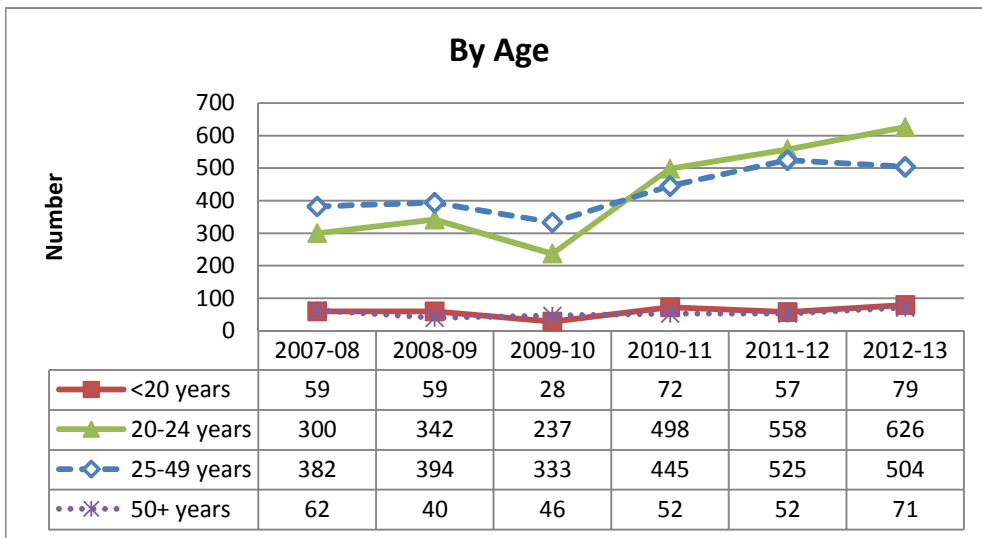
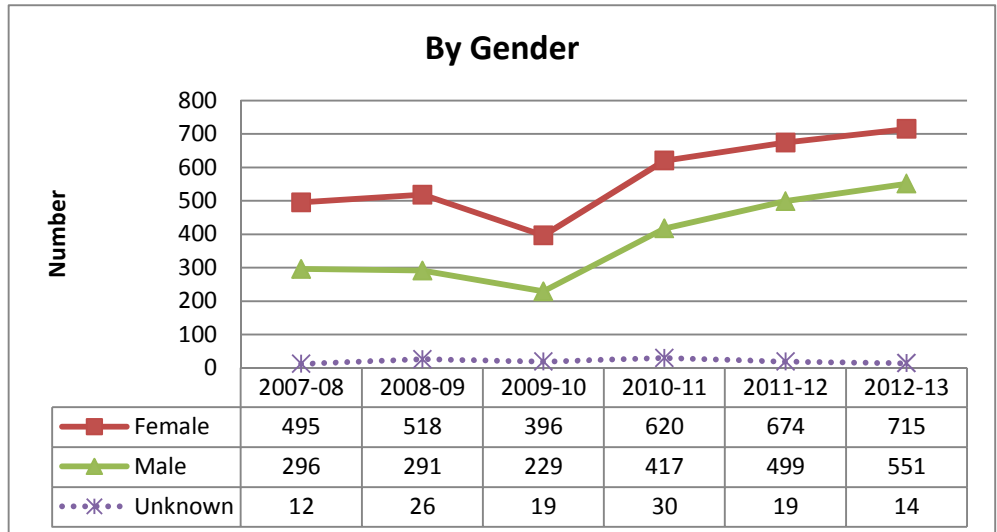
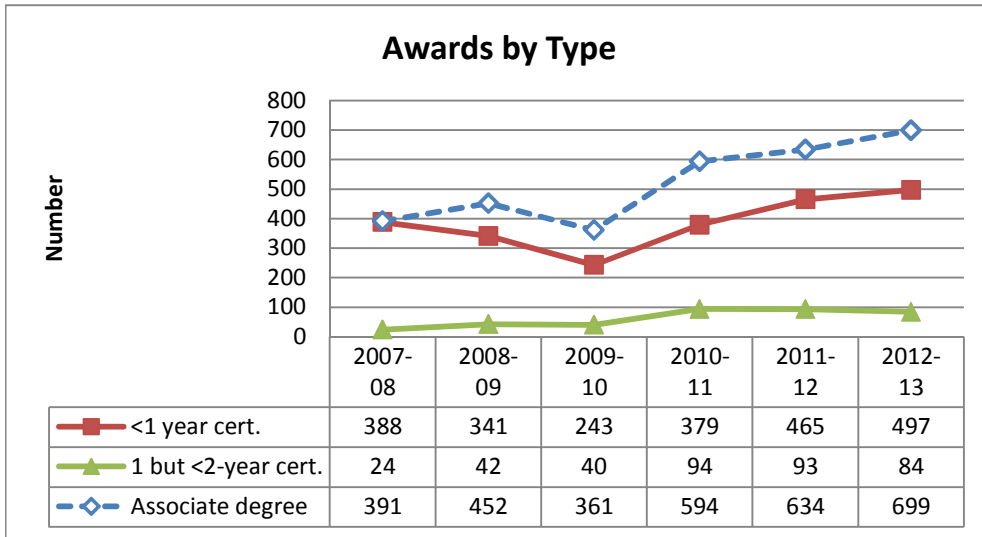
Persistence Rate: Percentage of students who are enrolled as of census for an initial and a subsequent term.

Numerator: The number of students who receive a grade of A, B, C, D, F, FW, I*, P/CR, NP/NC, RD, or W in at least one class in the subsequent primary term.

Denominator: The number of students who receive a grade of A, B, C, D, F, FW, I*, P/CR, NP/NC, RD, W in at least one class in the initial primary term.

See Addendum A for course and group definitions.

Los Medanos College including Brentwood Center Number of Awards by Year by Demographic Group



Awards:

Associate Degree includes Associate of Arts (A.A.) degree and Associate of Science (A.S.) degree.

Less than 1-year certificate includes certificates ranging 6 to fewer than 30 units.

At least 1 year but less than 2-year certificate includes certificates ranging from 30 to 60 or more units.

See Addendum A for course and group definitions.

Source: District Research, CCCCD. Based on information from Colleague. Run date 7/30/2013 JD

LEVEL 2 ACCREDITATION TABLES – AGGREGATED BY MEASURE AND DEMOGRAPHIC GROUP

Information in this section:

- Success Rate by Gender, Age Group, and Race/Ethnicity for All Courses, Basic Skill Courses, CTE Courses and Degree Applicable Courses
- Retention Rate by Gender, Age Group, and Race/Ethnicity for All Courses, Basic Skill Courses, CTE Courses and Degree Applicable Courses
- Number of Enrollments by Gender, Age Group, and Race/Ethnicity for All Courses, Basic Skill Courses, CTE Courses and Degree Applicable Courses
- Number of Successful Course Completion Enrollments by Gender, Age Group, and Race/Ethnicity for All Courses, Basic Skill Courses, CTE Courses and Degree Applicable Courses
- Number of Course Completion Enrollments by Gender, Age Group, and Race/Ethnicity for All Courses, Basic Skill Courses, CTE Courses and Degree Applicable Courses
- Fall-to-Spring Persistence Rate by Gender, Age Group, and Race/Ethnicity
- Fall-to-Fall Persistence Rate by Gender, Age Group, and Race/Ethnicity
- Number of Unduplicated Students by Fall Term by Gender, Age Group, and Race/Ethnicity
- Number of Unduplicated Students Continuing from Fall to Spring by Gender, Age Group, and Race/Ethnicity
- Number of Unduplicated Students Continuing from Fall to the Following Fall by Gender, Age Group, and Race/Ethnicity
- Awards by Gender, Age Group, and Race/Ethnicity

Los Medanos College including Brentwood Center
Level 2 Accreditation Tables - Aggregated by Measure and Demographic Group

| ALL COURSES BY GENDER | | | | | | | |
|---------------------------------|--------------------|---------------|---------------|---------------|---------------|---------------|---------------|
| ALL COURSES | GENDER | 2007FA | 2008FA | 2009FA | 2010FA | 2011FA | 2012FA |
| Success Rate | Female | 68% | 69% | 69% | 70% | 72% | 70% |
| | Male | 67% | 68% | 68% | 68% | 71% | 70% |
| | Gender Unknown | 69% | 72% | 73% | 67% | 68% | 79% |
| Retention Rate | Female | 83% | 84% | 83% | 82% | 85% | 84% |
| | Male | 83% | 84% | 83% | 82% | 86% | 86% |
| | Gender Unknown | 85% | 86% | 85% | 80% | 84% | 91% |
| Number of Enrollments | Female | 12,915 | 14,216 | 15,492 | 14,368 | 13,007 | 12,619 |
| | Male | 9,180 | 10,733 | 12,449 | 11,995 | 10,490 | 10,716 |
| | Gender Unknown | 622 | 647 | 610 | 486 | 309 | 261 |
| Number Successful | Female | 8,722 | 9,748 | 10,677 | 9,996 | 9,325 | 8,861 |
| | Male | 6,164 | 7,332 | 8,485 | 8,124 | 7,448 | 7,475 |
| | Gender Unknown | 429 | 465 | 446 | 327 | 210 | 207 |
| Number Retained | Female | 10,755 | 11,987 | 12,832 | 11,841 | 11,086 | 10,651 |
| | Male | 7,640 | 9,019 | 10,286 | 9,893 | 9,015 | 9,198 |
| | Gender Unknown | 531 | 557 | 516 | 391 | 259 | 238 |
| ALL COURSES BY AGE GROUP | | | | | | | |
| ALL COURSES | AGE GROUP | 2007FA | 2008FA | 2009FA | 2010FA | 2011FA | 2012FA |
| Success Rate | < 20 years old | 64% | 66% | 67% | 67% | 72% | 71% |
| | 20 to 24 years old | 63% | 65% | 66% | 66% | 68% | 68% |
| | 25 to 49 years old | 75% | 74% | 72% | 72% | 74% | 70% |
| | 50 + years old | 82% | 80% | 79% | 77% | 78% | 76% |
| | Age Unknown | 100% | 67% | 67% | 67% | | |
| Retention Rate | < 20 years old | 83% | 84% | 84% | 83% | 87% | 88% |
| | 20 to 24 years old | 80% | 81% | 81% | 80% | 83% | 83% |
| | 25 to 49 years old | 86% | 87% | 83% | 84% | 86% | 84% |
| | 50 + years old | 90% | 90% | 87% | 85% | 88% | 87% |
| | Age Unknown | 100% | 100% | 92% | 100% | | |
| Number of Enrollments | < 20 years old | 8,800 | 10,608 | 11,411 | 10,389 | 8,879 | 8,796 |
| | 20 to 24 years old | 6,460 | 7,153 | 8,063 | 8,487 | 7,872 | 8,126 |
| | 25 to 49 years old | 6,452 | 6,872 | 7,979 | 7,019 | 6,191 | 5,865 |
| | 50 + years old | 1,000 | 960 | 1,086 | 951 | 864 | 809 |
| | Age Unknown | 5 | 3 | 12 | 3 | | |
| Number Successful | < 20 years old | 5,611 | 7,023 | 7,667 | 7,011 | 6,364 | 6,276 |
| | 20 to 24 years old | 4,071 | 4,655 | 5,312 | 5,612 | 5,364 | 5,528 |
| | 25 to 49 years old | 4,811 | 5,100 | 5,760 | 5,088 | 4,579 | 4,124 |
| | 50 + years old | 817 | 765 | 861 | 734 | 676 | 615 |
| | Age Unknown | 5 | 2 | 8 | 2 | | |
| Number Retained | < 20 years old | 7,280 | 8,958 | 9,533 | 8,614 | 7,706 | 7,736 |
| | 20 to 24 years old | 5,170 | 5,784 | 6,516 | 6,823 | 6,556 | 6,705 |
| | 25 to 49 years old | 5,571 | 5,955 | 6,633 | 5,878 | 5,340 | 4,942 |
| | 50 + years old | 900 | 863 | 941 | 807 | 758 | 704 |
| | Age Unknown | 5 | 3 | 11 | 3 | | |

See Addendum A for data and group definitions.

na = Not available.

Source: District Research. Based on information from Datatel Colleague. 7/30/2013 JD

Los Medanos College including Brentwood Center
Level 2 Accreditation Tables - Aggregated by Measure and Demographic Group

| ALL COURSES BY RACE/ETHNICITY | | | | | | | |
|--------------------------------------|-----------------------|---------------|---------------|---------------|---------------|---------------|---------------|
| ALL COURSES | RACE/ETHNICITY | 2007FA | 2008FA | 2009FA | 2010FA | 2011FA | 2012FA |
| Success Rate | African American | 53% | 53% | 54% | 54% | 60% | 58% |
| | Asian | 71% | 75% | 75% | 74% | 75% | 79% |
| | Hispanic | 67% | 69% | 69% | 69% | 72% | 70% |
| | White | 73% | 75% | 75% | 74% | 76% | 75% |
| | Other/Undeclared | 67% | 65% | 69% | 70% | 71% | 68% |
| Retention Rate | African American | 78% | 77% | 76% | 75% | 82% | 80% |
| | Asian | 84% | 87% | 85% | 85% | 87% | 89% |
| | Hispanic | 83% | 85% | 83% | 83% | 86% | 85% |
| | White | 86% | 87% | 85% | 85% | 87% | 87% |
| | Other/Undeclared | 82% | 83% | 83% | 83% | 85% | 84% |
| Number of Enrollments | African American | 3,662 | 4,583 | 4,984 | 4,512 | 4,062 | 3,895 |
| | Asian | 2,563 | 2,866 | 2,997 | 2,845 | 2,547 | 2,544 |
| | Hispanic | 6,333 | 7,299 | 7,927 | 7,813 | 7,346 | 7,830 |
| | White | 8,210 | 8,615 | 8,930 | 8,123 | 6,993 | 6,597 |
| | Other/Undeclared | 1,949 | 2,233 | 3,713 | 3,556 | 2,858 | 2,730 |
| Number Successful | African American | 1,951 | 2,451 | 2,713 | 2,445 | 2,438 | 2,246 |
| | Asian | 1,807 | 2,139 | 2,234 | 2,112 | 1,903 | 2,013 |
| | Hispanic | 4,252 | 5,017 | 5,444 | 5,376 | 5,283 | 5,475 |
| | White | 5,998 | 6,489 | 6,660 | 6,022 | 5,339 | 4,964 |
| | Other/Undeclared | 1,307 | 1,449 | 2,557 | 2,492 | 2,020 | 1,845 |
| Number Retained | African American | 2,848 | 3,532 | 3,781 | 3,388 | 3,338 | 3,130 |
| | Asian | 2,142 | 2,506 | 2,545 | 2,422 | 2,224 | 2,274 |
| | Hispanic | 5,281 | 6,169 | 6,607 | 6,495 | 6,284 | 6,669 |
| | White | 7,049 | 7,501 | 7,606 | 6,867 | 6,086 | 5,725 |
| | Other/Undeclared | 1,606 | 1,855 | 3,095 | 2,953 | 2,428 | 2,289 |

See Addendum A for data and group definitions.

na = Not available.

Source: District Research. Based on information from Datatel Colleague. 7/30/2013 JD

Los Medanos College including Brentwood Center
Level 2 Accreditation Tables - Aggregated by Measure and Demographic Group

| BASIC SKILLS COURSES BY GENDER | | | | | | | |
|--|--------------------|---------------|---------------|---------------|---------------|---------------|---------------|
| BASIC SKILLS | GENDER | 2007FA | 2008FA | 2009FA | 2010FA | 2011FA | 2012FA |
| Success Rate | Female | 61% | 66% | 68% | 65% | 69% | 63% |
| | Male | 49% | 54% | 57% | 54% | 56% | 54% |
| | Gender Unknown | 54% | 70% | 69% | 62% | 69% | 72% |
| Retention Rate | Female | 82% | 84% | 83% | 82% | 85% | 82% |
| | Male | 77% | 78% | 80% | 75% | 77% | 77% |
| | Gender Unknown | 84% | 85% | 85% | 77% | 92% | 84% |
| Number of Enrollments | Female | 957 | 1,043 | 1,488 | 1,246 | 1,074 | 1,003 |
| | Male | 537 | 734 | 865 | 769 | 631 | 646 |
| | Gender Unknown | 56 | 88 | 84 | 53 | 26 | 25 |
| Number Successful | Female | 584 | 684 | 1,005 | 810 | 746 | 632 |
| | Male | 264 | 400 | 490 | 418 | 355 | 347 |
| | Gender Unknown | 30 | 62 | 58 | 33 | 18 | 18 |
| Number Retained | Female | 781 | 877 | 1,230 | 1,018 | 914 | 819 |
| | Male | 414 | 576 | 692 | 578 | 489 | 500 |
| | Gender Unknown | 47 | 75 | 71 | 41 | 24 | 21 |
| BASIC SKILLS COURSES BY AGE GROUP | | | | | | | |
| BASIC SKILLS | AGE GROUP | 2007FA | 2008FA | 2009FA | 2010FA | 2011FA | 2012FA |
| Success Rate | < 20 years old | 54% | 56% | 65% | 55% | 61% | 63% |
| | 20 to 24 years old | 45% | 58% | 55% | 52% | 57% | 48% |
| | 25 to 49 years old | 68% | 70% | 66% | 71% | 72% | 64% |
| | 50 + years old | 61% | 78% | 74% | 69% | 75% | 64% |
| Retention Rate | < 20 years old | 80% | 81% | 85% | 77% | 83% | 85% |
| | 20 to 24 years old | 74% | 78% | 75% | 76% | 79% | 71% |
| | 25 to 49 years old | 85% | 84% | 81% | 83% | 84% | 81% |
| | 50 + years old | 80% | 94% | 84% | 80% | 85% | 81% |
| Number of Enrollments | < 20 years old | 729 | 880 | 977 | 753 | 640 | 698 |
| | 20 to 24 years old | 307 | 379 | 510 | 467 | 400 | 385 |
| | 25 to 49 years old | 468 | 519 | 818 | 749 | 585 | 505 |
| | 50 + years old | 46 | 87 | 132 | 99 | 106 | 86 |
| Number Successful | < 20 years old | 393 | 494 | 636 | 416 | 393 | 437 |
| | 20 to 24 years old | 138 | 219 | 281 | 242 | 226 | 184 |
| | 25 to 49 years old | 319 | 365 | 538 | 535 | 421 | 321 |
| | 50 + years old | 28 | 68 | 98 | 68 | 79 | 55 |
| Number Retained | < 20 years old | 582 | 716 | 835 | 579 | 529 | 591 |
| | 20 to 24 years old | 226 | 295 | 381 | 355 | 314 | 272 |
| | 25 to 49 years old | 397 | 435 | 666 | 624 | 494 | 407 |
| | 50 + years old | 37 | 82 | 111 | 79 | 90 | 70 |

See Addendum A for data and group definitions.

na = Not available.

Source: District Research. Based on information from Datatel Colleague. 7/30/2013 JD

Los Medanos College including Brentwood Center
Level 2 Accreditation Tables - Aggregated by Measure and Demographic Group

| BASIC SKILLS COURSES BY RACE/ETHNICITY | | | | | | | |
|---|-----------------------|---------------|---------------|---------------|---------------|---------------|---------------|
| BASIC SKILLS | RACE/ETHNICITY | 2007FA | 2008FA | 2009FA | 2010FA | 2011FA | 2012FA |
| Success Rate | African American | 38% | 50% | 52% | 47% | 48% | 44% |
| | Asian | 63% | 69% | 74% | 67% | 79% | 79% |
| | Hispanic | 63% | 66% | 66% | 67% | 70% | 62% |
| | White | 62% | 64% | 68% | 68% | 68% | 66% |
| | Other/Undeclared | 54% | 59% | 65% | 54% | 59% | 51% |
| Retention Rate | African American | 69% | 72% | 74% | 68% | 72% | 68% |
| | Asian | 81% | 89% | 85% | 85% | 92% | 89% |
| | Hispanic | 85% | 86% | 85% | 84% | 85% | 82% |
| | White | 80% | 83% | 82% | 82% | 85% | 83% |
| | Other/Undeclared | 82% | 81% | 84% | 75% | 83% | 81% |
| Number of Enrollments | African American | 336 | 448 | 551 | 496 | 420 | 361 |
| | Asian | 155 | 159 | 224 | 203 | 212 | 196 |
| | Hispanic | 644 | 719 | 916 | 801 | 661 | 688 |
| | White | 279 | 379 | 427 | 369 | 296 | 280 |
| | Other/Undeclared | 136 | 160 | 319 | 199 | 142 | 149 |
| Number Successful | African American | 128 | 222 | 286 | 232 | 201 | 159 |
| | Asian | 98 | 110 | 166 | 136 | 168 | 154 |
| | Hispanic | 407 | 477 | 606 | 534 | 466 | 424 |
| | White | 172 | 242 | 289 | 252 | 200 | 184 |
| | Other/Undeclared | 73 | 95 | 206 | 107 | 84 | 76 |
| Number Retained | African American | 233 | 324 | 407 | 338 | 304 | 247 |
| | Asian | 125 | 142 | 191 | 172 | 194 | 175 |
| | Hispanic | 549 | 618 | 778 | 674 | 560 | 566 |
| | White | 224 | 314 | 350 | 304 | 251 | 231 |
| | Other/Undeclared | 111 | 130 | 267 | 149 | 118 | 121 |

See Addendum A for data and group definitions.

na = Not available.

Source: District Research. Based on information from Datatel Colleague. 7/30/2013 JD

Los Medanos College including Brentwood Center
Level 2 Accreditation Tables - Aggregated by Measure and Demographic Group

CAREER AND TECHNICAL EDUCATION COURSES BY GENDER

| CTE | GENDER | 2007FA | 2008FA | 2009FA | 2010FA | 2011FA | 2012FA |
|-----------------------|----------------|--------|--------|--------|--------|--------|--------|
| Success Rate | Female | 72% | 69% | 71% | 70% | 72% | 70% |
| | Male | 75% | 75% | 75% | 72% | 72% | 72% |
| | Gender Unknown | 72% | 79% | 80% | 75% | 77% | 90% |
| Retention Rate | Female | 88% | 88% | 86% | 85% | 86% | 86% |
| | Male | 88% | 88% | 89% | 85% | 87% | 87% |
| | Gender Unknown | 89% | 93% | 89% | 86% | 89% | 98% |
| Number of Enrollments | Female | 3,406 | 3,400 | 3,471 | 2,827 | 2,419 | 2,374 |
| | Male | 3,022 | 3,078 | 3,642 | 3,252 | 2,817 | 2,846 |
| | Gender Unknown | 171 | 149 | 148 | 99 | 53 | 58 |
| Number Successful | Female | 2,453 | 2,354 | 2,452 | 1,993 | 1,744 | 1,656 |
| | Male | 2,257 | 2,316 | 2,723 | 2,328 | 2,037 | 2,052 |
| | Gender Unknown | 123 | 117 | 119 | 74 | 41 | 52 |
| Number Retained | Female | 2,999 | 2,994 | 2,993 | 2,396 | 2,074 | 2,035 |
| | Male | 2,660 | 2,715 | 3,224 | 2,780 | 2,454 | 2,479 |
| | Gender Unknown | 153 | 138 | 132 | 85 | 47 | 57 |

CAREER AND TECHNICAL EDUCATION COURSES BY AGE GROUP

| CTE | AGE GROUP | 2007FA | 2008FA | 2009FA | 2010FA | 2011FA | 2012FA |
|-----------------------|--------------------|--------|--------|--------|--------|--------|--------|
| Success Rate | < 20 years old | 60% | 62% | 61% | 60% | 67% | 66% |
| | 20 to 24 years old | 67% | 68% | 68% | 69% | 67% | 70% |
| | 25 to 49 years old | 81% | 78% | 79% | 76% | 77% | 74% |
| | 50 + years old | 83% | 82% | 83% | 83% | 83% | 81% |
| | Age Unknown | 100% | 50% | 75% | | | |
| Retention Rate | < 20 years old | 84% | 84% | 85% | 81% | 86% | 86% |
| | 20 to 24 years old | 84% | 85% | 86% | 83% | 84% | 85% |
| | 25 to 49 years old | 91% | 91% | 89% | 88% | 88% | 88% |
| | 50 + years old | 92% | 94% | 91% | 89% | 89% | 92% |
| | Age Unknown | 100% | 100% | 88% | | | |
| Number of Enrollments | < 20 years old | 1,356 | 1,459 | 1,409 | 1,298 | 1,201 | 1,122 |
| | 20 to 24 years old | 1,621 | 1,705 | 1,979 | 1,793 | 1,543 | 1,679 |
| | 25 to 49 years old | 3,101 | 3,013 | 3,335 | 2,616 | 2,175 | 2,146 |
| | 50 + years old | 517 | 448 | 530 | 471 | 370 | 331 |
| | Age Unknown | 4 | 2 | 8 | | | |
| Number Successful | < 20 years old | 813 | 905 | 862 | 776 | 800 | 735 |
| | 20 to 24 years old | 1,087 | 1,159 | 1,349 | 1,237 | 1,031 | 1,182 |
| | 25 to 49 years old | 2,500 | 2,353 | 2,637 | 1,993 | 1,684 | 1,574 |
| | 50 + years old | 429 | 369 | 440 | 389 | 307 | 269 |
| | Age Unknown | 4 | 1 | 6 | | | |
| Number Retained | < 20 years old | 1,136 | 1,230 | 1,196 | 1,056 | 1,033 | 963 |
| | 20 to 24 years old | 1,362 | 1,451 | 1,693 | 1,496 | 1,290 | 1,421 |
| | 25 to 49 years old | 2,835 | 2,745 | 2,973 | 2,290 | 1,921 | 1,884 |
| | 50 + years old | 475 | 419 | 480 | 419 | 331 | 303 |
| | Age Unknown | 4 | 2 | 7 | | | |

See Addendum A for data and group definitions.

na = Not available.

Source: District Research. Based on information from Datatel Colleague. 7/30/2013 JD

**Los Medanos College including Brentwood Center
Level 2 Accreditation Tables - Aggregated by Measure and Demographic Group**

| CAREER AND TECHNICAL EDUCATION COURSES BY RACE/ETHNICITY | | | | | | | |
|---|-----------------------|---------------|---------------|---------------|---------------|---------------|---------------|
| CTE | RACE/ETHNICITY | 2007FA | 2008FA | 2009FA | 2010FA | 2011FA | 2012FA |
| Success Rate | African American | 57% | 53% | 56% | 51% | 57% | 51% |
| | Asian | 79% | 79% | 80% | 82% | 74% | 83% |
| | Hispanic | 73% | 72% | 73% | 71% | 72% | 72% |
| | White | 79% | 81% | 80% | 77% | 79% | 80% |
| | Other/Undeclared | 72% | 64% | 70% | 73% | 71% | 66% |
| Retention Rate | African American | 82% | 81% | 80% | 75% | 80% | 80% |
| | Asian | 88% | 89% | 91% | 90% | 88% | 92% |
| | Hispanic | 88% | 88% | 88% | 87% | 86% | 87% |
| | White | 91% | 92% | 90% | 87% | 89% | 90% |
| | Other/Undeclared | 87% | 85% | 87% | 85% | 87% | 83% |
| Number of Enrollments | African American | 1,079 | 1,168 | 1,325 | 1,030 | 846 | 906 |
| | Asian | 618 | 652 | 724 | 671 | 558 | 544 |
| | Hispanic | 1,681 | 1,606 | 1,737 | 1,606 | 1,440 | 1,412 |
| | White | 2,705 | 2,622 | 2,681 | 2,212 | 1,871 | 1,755 |
| | Other/Undeclared | 516 | 579 | 794 | 659 | 574 | 661 |
| Number Successful | African American | 614 | 618 | 737 | 524 | 483 | 462 |
| | Asian | 486 | 512 | 580 | 549 | 415 | 450 |
| | Hispanic | 1,226 | 1,161 | 1,263 | 1,138 | 1,040 | 1,011 |
| | White | 2,135 | 2,125 | 2,158 | 1,701 | 1,475 | 1,402 |
| | Other/Undeclared | 372 | 371 | 556 | 483 | 409 | 435 |
| Number Retained | African American | 889 | 947 | 1,062 | 771 | 676 | 718 |
| | Asian | 546 | 583 | 659 | 607 | 491 | 500 |
| | Hispanic | 1,477 | 1,418 | 1,528 | 1,392 | 1,239 | 1,230 |
| | White | 2,453 | 2,407 | 2,410 | 1,929 | 1,671 | 1,576 |
| | Other/Undeclared | 447 | 492 | 690 | 562 | 498 | 547 |

See Addendum A for data and group definitions.

na = Not available.

Source: District Research. Based on information from Datatel Colleague. 7/30/2013 JD

**Los Medanos College including Brentwood Center
Level 2 Accreditation Tables - Aggregated by Measure and Demographic Group**

| DEGREE APPLICABLE COURSES BY GENDER | | | | | | | |
|---|--------------------|---------------|---------------|---------------|---------------|---------------|---------------|
| DEGREE APPL. | GENDER | 2007FA | 2008FA | 2009FA | 2010FA | 2011FA | 2012FA |
| Success Rate | Female | 67% | 68% | 69% | 70% | 72% | 71% |
| | Male | 67% | 68% | 68% | 69% | 72% | 71% |
| | Gender Unknown | 70% | 71% | 72% | 68% | 68% | 80% |
| Retention Rate | Female | 83% | 84% | 82% | 82% | 85% | 85% |
| | Male | 83% | 84% | 82% | 83% | 86% | 86% |
| | Gender Unknown | 85% | 86% | 84% | 81% | 83% | 92% |
| Number of Enrollments | Female | 11,315 | 12,576 | 13,426 | 12,931 | 11,850 | 11,538 |
| | Male | 8,148 | 9,444 | 11,193 | 11,114 | 9,829 | 10,003 |
| | Gender Unknown | 536 | 537 | 497 | 428 | 283 | 236 |
| Number Successful | Female | 7,618 | 8,589 | 9,207 | 9,036 | 8,515 | 8,170 |
| | Male | 5,438 | 6,410 | 7,625 | 7,624 | 7,074 | 7,079 |
| | Gender Unknown | 375 | 383 | 359 | 293 | 192 | 189 |
| Number Retained | Female | 9,358 | 10,539 | 11,038 | 10,646 | 10,100 | 9,763 |
| | Male | 6,736 | 7,899 | 9,205 | 9,215 | 8,498 | 8,635 |
| | Gender Unknown | 455 | 460 | 416 | 345 | 235 | 217 |
| DEGREE APPLICABLE COURSES BY AGE GROUP | | | | | | | |
| DEGREE APPL. | AGE GROUP | 2007FA | 2008FA | 2009FA | 2010FA | 2011FA | 2012FA |
| Success Rate | < 20 years old | 64% | 67% | 67% | 68% | 72% | 72% |
| | 20 to 24 years old | 64% | 65% | 66% | 67% | 69% | 69% |
| | 25 to 49 years old | 73% | 73% | 71% | 73% | 74% | 71% |
| | 50 + years old | 82% | 79% | 79% | 78% | 79% | 77% |
| | Age Unknown | 100% | 67% | 56% | 67% | | |
| Retention Rate | < 20 years old | 83% | 85% | 83% | 83% | 87% | 88% |
| | 20 to 24 years old | 80% | 81% | 81% | 81% | 84% | 83% |
| | 25 to 49 years old | 85% | 85% | 82% | 84% | 86% | 85% |
| | 50 + years old | 90% | 89% | 86% | 85% | 88% | 88% |
| | Age Unknown | 100% | 100% | 89% | 100% | | |
| Number of Enrollments | < 20 years old | 7,822 | 9,447 | 10,223 | 9,495 | 8,174 | 7,995 |
| | 20 to 24 years old | 5,928 | 6,559 | 7,352 | 7,953 | 7,451 | 7,725 |
| | 25 to 49 years old | 5,334 | 5,714 | 6,622 | 6,182 | 5,582 | 5,334 |
| | 50 + years old | 912 | 834 | 910 | 840 | 755 | 723 |
| | Age Unknown | 3 | 3 | 9 | 3 | | |
| Number Successful | < 20 years old | 5,027 | 6,316 | 6,866 | 6,478 | 5,917 | 5,759 |
| | 20 to 24 years old | 3,767 | 4,256 | 4,873 | 5,322 | 5,124 | 5,333 |
| | 25 to 49 years old | 3,886 | 4,148 | 4,727 | 4,495 | 4,145 | 3,786 |
| | 50 + years old | 748 | 660 | 720 | 656 | 595 | 560 |
| | Age Unknown | 3 | 2 | 5 | 2 | | |
| Number Retained | < 20 years old | 6,459 | 7,983 | 8,491 | 7,905 | 7,117 | 7,050 |
| | 20 to 24 years old | 4,732 | 5,286 | 5,936 | 6,403 | 6,224 | 6,418 |
| | 25 to 49 years old | 4,533 | 4,884 | 5,437 | 5,178 | 4,826 | 4,513 |
| | 50 + years old | 822 | 742 | 787 | 717 | 666 | 634 |
| | Age Unknown | 3 | 3 | 8 | 3 | | |

See Addendum A for data and group definitions.

na = Not available.

Source: District Research. Based on information from Datatel Colleague. 7/30/2013 JD

**Los Medanos College including Brentwood Center
Level 2 Accreditation Tables - Aggregated by Measure and Demographic Group**

| DEGREE APPLICABLE COURSES BY RACE/ETHNICITY | | | | | | | |
|--|-----------------------|---------------|---------------|---------------|---------------|---------------|---------------|
| DEGREE APPL. | RACE/ETHNICITY | 2007FA | 2008FA | 2009FA | 2010FA | 2011FA | 2012FA |
| Success Rate | African American | 54% | 53% | 54% | 55% | 61% | 59% |
| | Asian | 70% | 75% | 74% | 75% | 74% | 79% |
| | Hispanic | 67% | 68% | 69% | 69% | 72% | 71% |
| | White | 72% | 75% | 74% | 74% | 77% | 76% |
| | Other/Undeclared | 67% | 65% | 69% | 71% | 71% | 68% |
| Retention Rate | African American | 78% | 77% | 75% | 76% | 83% | 82% |
| | Asian | 83% | 87% | 84% | 85% | 87% | 89% |
| | Hispanic | 83% | 84% | 83% | 83% | 86% | 85% |
| | White | 85% | 86% | 85% | 85% | 87% | 87% |
| | Other/Undeclared | 81% | 83% | 83% | 83% | 85% | 84% |
| Number of Enrollments | African American | 3,187 | 3,996 | 4,304 | 3,937 | 3,620 | 3,500 |
| | Asian | 2,304 | 2,628 | 2,659 | 2,617 | 2,326 | 2,337 |
| | Hispanic | 5,437 | 6,305 | 6,806 | 6,900 | 6,631 | 7,082 |
| | White | 7,358 | 7,656 | 8,061 | 7,689 | 6,675 | 6,291 |
| | Other/Undeclared | 1,713 | 1,972 | 3,286 | 3,330 | 2,710 | 2,567 |
| Number Successful | African American | 1,718 | 2,121 | 2,344 | 2,160 | 2,223 | 2,069 |
| | Asian | 1,615 | 1,959 | 1,963 | 1,958 | 1,729 | 1,851 |
| | Hispanic | 3,632 | 4,313 | 4,665 | 4,752 | 4,773 | 5,002 |
| | White | 5,316 | 5,715 | 5,966 | 5,720 | 5,124 | 4,759 |
| | Other/Undeclared | 1,150 | 1,274 | 2,253 | 2,363 | 1,932 | 1,757 |
| Number Retained | African American | 2,488 | 3,076 | 3,248 | 2,979 | 3,016 | 2,853 |
| | Asian | 1,913 | 2,289 | 2,242 | 2,226 | 2,021 | 2,089 |
| | Hispanic | 4,487 | 5,289 | 5,626 | 5,719 | 5,675 | 6,048 |
| | White | 6,265 | 6,614 | 6,820 | 6,504 | 5,817 | 5,470 |
| | Other/Undeclared | 1,396 | 1,630 | 2,723 | 2,778 | 2,304 | 2,155 |

See Addendum A for data and group definitions.

na = Not available.

Source: District Research. Based on information from Datatel Colleague. 7/30/2013 JD

Los Medanos College including Brentwood Center
Level 2 Accreditation Tables - Aggregated by Measure and Demographic Group

| PERSISTENCE BY GENDER | | | | | | | |
|--|--------------------|---------------|---------------|---------------|---------------|---------------|---------------|
| PERSISTENCE | GENDER | 2007FA | 2008FA | 2009FA | 2010FA | 2011FA | 2012FA |
| Fall-to-Spring Persistence Rate | Female | 63% | 66% | 66% | 70% | 70% | 69% |
| | Male | 61% | 66% | 67% | 68% | 70% | 69% |
| | Gender Unknown | 64% | 68% | 68% | 74% | 73% | 71% |
| Fall-to-Fall Persistence Rate | Female | 46% | 49% | 48% | 50% | 52% | na |
| | Male | 43% | 48% | 47% | 47% | 49% | na |
| | Gender Unknown | 50% | 53% | 49% | 51% | 46% | na |
| Number of Unduplicated Students | Female | 5,348 | 5,661 | 6,150 | 5,427 | 5,068 | 4,778 |
| | Male | 3,561 | 4,066 | 4,628 | 4,325 | 3,919 | 3,897 |
| | Gender Unknown | 230 | 241 | 246 | 176 | 127 | 103 |
| Number of Students Continuing to Spring | Female | 3,375 | 3,737 | 4,063 | 3,803 | 3,551 | 3,309 |
| | Male | 2,162 | 2,681 | 3,122 | 2,961 | 2,733 | 2,676 |
| | Gender Unknown | 147 | 164 | 168 | 130 | 93 | 73 |
| Number of Students Continuing to Fall | Female | 2,479 | 2,769 | 2,940 | 2,724 | 2,633 | na |
| | Male | 1,534 | 1,969 | 2,193 | 2,018 | 1,921 | na |
| | Gender Unknown | 116 | 128 | 120 | 90 | 58 | na |
| PERSISTENCE BY AGE GROUP | | | | | | | |
| PERSISTENCE | AGE_GROUP | 2007FA | 2008FA | 2009FA | 2010FA | 2011FA | 2012FA |
| Fall-to-Spring Persistence Rate | < 20 years old | 69% | 73% | 73% | 76% | 77% | 78% |
| | 20 to 24 years old | 64% | 65% | 66% | 68% | 69% | 68% |
| | 25 to 49 years old | 56% | 61% | 63% | 65% | 65% | 62% |
| | 50 + years old | 53% | 55% | 55% | 64% | 64% | 60% |
| | Age Unknown | 20% | 0% | 20% | 0% | | |
| Fall-to-Fall Persistence Rate | < 20 years old | 55% | 59% | 58% | 59% | 62% | na |
| | 20 to 24 years old | 44% | 44% | 46% | 45% | 45% | na |
| | 25 to 49 years old | 39% | 44% | 41% | 43% | 46% | na |
| | 50 + years old | 35% | 37% | 35% | 39% | 48% | na |
| | Age Unknown | 0% | 0% | 20% | 0% | | na |
| Number of Unduplicated Students | < 20 years old | 2,953 | 3,480 | 3,779 | 3,251 | 2,954 | 2,852 |
| | 20 to 24 years old | 2,406 | 2,624 | 3,056 | 3,144 | 3,024 | 2,980 |
| | 25 to 49 years old | 3,197 | 3,310 | 3,589 | 3,066 | 2,708 | 2,553 |
| | 50 + years old | 578 | 551 | 590 | 464 | 428 | 393 |
| | Age Unknown | 5 | 3 | 10 | 3 | | |
| Number of Students Continuing to Spring | < 20 years old | 2,050 | 2,544 | 2,755 | 2,480 | 2,274 | 2,220 |
| | 20 to 24 years old | 1,542 | 1,712 | 2,029 | 2,137 | 2,072 | 2,027 |
| | 25 to 49 years old | 1,787 | 2,022 | 2,245 | 1,979 | 1,758 | 1,577 |
| | 50 + years old | 304 | 304 | 322 | 298 | 273 | 234 |
| | Age Unknown | 1 | - | 2 | - | | |
| Number of Students Continuing to Fall | < 20 years old | 1,626 | 2,047 | 2,175 | 1,924 | 1,818 | na |
| | 20 to 24 years old | 1,058 | 1,164 | 1,410 | 1,400 | 1,355 | na |
| | 25 to 49 years old | 1,241 | 1,451 | 1,458 | 1,329 | 1,235 | na |
| | 50 + years old | 204 | 204 | 208 | 179 | 204 | na |
| | Age Unknown | - | - | 2 | - | | na |

See Addendum A for data and group definitions.

na = Not available.

Source: District Research. Based on information from Datatel Colleague. 7/30/2013 JD

**Los Medanos College including Brentwood Center
Level 2 Accreditation Tables - Aggregated by Measure and Demographic Group**

| PERSISTENCE BY RACE/ETHNICITY | | | | | | | |
|--|-----------------------|---------------|---------------|---------------|---------------|---------------|---------------|
| PERSISTENCE | RACE/ETHNICITY | 2007FA | 2008FA | 2009FA | 2010FA | 2011FA | 2012FA |
| Fall-to-Spring Persistence Rate | African American | 55% | 59% | 60% | 60% | 61% | 62% |
| | Asian | 66% | 70% | 72% | 72% | 73% | 75% |
| | Hispanic | 64% | 68% | 67% | 71% | 72% | 71% |
| | White | 62% | 66% | 67% | 70% | 70% | 68% |
| | Other/Undeclared | 63% | 68% | 69% | 75% | 74% | 69% |
| Fall-to-Fall Persistence Rate | African American | 41% | 44% | 41% | 40% | 42% | na |
| | Asian | 47% | 52% | 53% | 54% | 54% | na |
| | Hispanic | 48% | 51% | 49% | 51% | 56% | na |
| | White | 44% | 49% | 47% | 48% | 49% | na |
| | Other/Undeclared | 45% | 47% | 51% | 53% | 50% | na |
| Number of Unduplicated Students | African American | 1,361 | 1,669 | 1,860 | 1,673 | 1,504 | 1,353 |
| | Asian | 1,035 | 1,097 | 1,166 | 1,090 | 999 | 936 |
| | Hispanic | 2,554 | 2,849 | 3,115 | 2,930 | 2,810 | 2,926 |
| | White | 3,415 | 3,503 | 3,577 | 3,067 | 2,747 | 2,566 |
| | Other/Undeclared | 774 | 850 | 1,306 | 1,168 | 1,054 | 997 |
| Number of Students Continuing to Spring | African American | 751 | 987 | 1,123 | 997 | 919 | 835 |
| | Asian | 683 | 772 | 839 | 783 | 730 | 705 |
| | Hispanic | 1,635 | 1,942 | 2,091 | 2,091 | 2,031 | 2,077 |
| | White | 2,131 | 2,304 | 2,405 | 2,149 | 1,920 | 1,756 |
| | Other/Undeclared | 484 | 577 | 895 | 874 | 777 | 685 |
| Number of Students Continuing to Fall | African American | 564 | 738 | 768 | 666 | 625 | na |
| | Asian | 489 | 568 | 615 | 584 | 542 | na |
| | Hispanic | 1,233 | 1,448 | 1,522 | 1,489 | 1,560 | na |
| | White | 1,495 | 1,712 | 1,681 | 1,471 | 1,353 | na |
| | Other/Undeclared | 348 | 400 | 667 | 622 | 532 | na |

See Addendum A for data and group definitions.

na = Not available.

Source: District Research. Based on information from Datatel Colleague. 7/30/2013 JD

**Los Medanos College including Brentwood Center
Level 2 Accreditation Tables - Aggregated by Measure and Demographic Group**

| AWARDS BY GENDER | | | | | | | |
|-------------------------|----------------|----------------|----------------|----------------|----------------|----------------|----------------|
| ALL AWARDS | GENDER | 2007-08 | 2008-09 | 2009-10 | 2010-11 | 2011-12 | 2012-13 |
| | Female | 495 | 518 | 396 | 620 | 674 | 715 |
| | Male | 296 | 291 | 229 | 417 | 499 | 551 |
| | Gender Unknown | 12 | 26 | 19 | 30 | 19 | 14 |

| AWARDS BY AGE GROUP | | | | | | | |
|----------------------------|--------------------|----------------|----------------|----------------|----------------|----------------|----------------|
| ALL AWARDS | AGE_GROUP | 2007-08 | 2008-09 | 2009-10 | 2010-11 | 2011-12 | 2012-13 |
| | < 20 years old | 59 | 59 | 28 | 72 | 57 | 79 |
| | 20 to 24 years old | 300 | 342 | 237 | 498 | 558 | 626 |
| | 25 to 49 years old | 382 | 394 | 333 | 445 | 525 | 504 |
| | 50 + years old | 62 | 40 | 46 | 52 | 52 | 71 |

| AWARDS BY RACE/ETHNICITY | | | | | | | |
|---------------------------------|-----------------------|----------------|----------------|----------------|----------------|----------------|----------------|
| ALL AWARDS | RACE/ETHNICITY | 2007-08 | 2008-09 | 2009-10 | 2010-11 | 2011-12 | 2012-13 |
| | African American | 74 | 118 | 90 | 124 | 135 | 152 |
| | Asian | 107 | 88 | 61 | 121 | 110 | 124 |
| | Hispanic | 215 | 232 | 179 | 311 | 387 | 420 |
| | White | 339 | 341 | 249 | 423 | 454 | 431 |
| | Other/Undeclared | 68 | 56 | 65 | 88 | 106 | 153 |

See Addendum A for data and group definitions.

na = Not available.

Source: District Research. Based on information from Datatel Colleague. 7/30/2013 JD

LEVEL 3 ACCREDITATION TABLES – AGGREGATED BY MEASURE AND DEMOGRAPHIC GROUP

Information in this section:

- Success Rate by Gender, Age Group, and Race/Ethnicity and by Traditional and Online Instruction Methods for All Courses, Basic Skill Courses, CTE Courses and Degree Applicable Courses
- Retention Rate by Gender, Age Group, and Race/Ethnicity and by Traditional and Online Instruction Methods for All Courses, Basic Skill Courses, CTE Courses and Degree Applicable Courses
- Number of Enrollments by Gender, Age Group, and Race/Ethnicity and by Traditional and Online Instruction Methods for All Courses, Basic Skill Courses, CTE Courses and Degree Applicable Courses
- Number of Successful Course Completion Enrollments by Gender, Age Group, and Race/Ethnicity and by Traditional and Online Instruction Methods for All Courses, Basic Skill Courses, CTE Courses and Degree Applicable Courses
- Number of Course Completion Enrollments by Gender, Age Group, and Race/Ethnicity and by Traditional and Online Instruction Methods for All Courses, Basic Skill Courses, CTE Courses and Degree Applicable Courses
- Fall-to-Spring Persistence Rate by Gender, Age Group, and Race/Ethnicity and Traditional and Online Instruction Methods
- Fall-to-Fall Persistence Rate by Gender, Age Group, and Race/Ethnicity and Traditional and Online Instruction Methods
- Number of Unduplicated Students by Fall Term by Gender, Age Group, and Race/Ethnicity and Traditional and Online Instruction Methods
- Number of Unduplicated Students Continuing from Fall to Spring by Gender, Age Group, and Race/Ethnicity and Traditional and Online Instruction Methods
- Number of Unduplicated Students Continuing from Fall to the Following Fall by Gender, Age Group, and Race/Ethnicity and Traditional and Online Instruction Methods
- Type of Awards by Gender, Age Group, and Race/Ethnicity

Los Medanos College including Brentwood Center
Level 3 Accreditation Tables - Aggregated by Measure, Demographic Group and Instruction Method

| ALL COURSES BY GENDER | | | | | | | | | |
|------------------------------|-------------------|----------------------|---------------|---------------|---------------|---------------|---------------|---------------|--------|
| ALL COURSES | GENDER | Instr. Method | 2007FA | 2008FA | 2009FA | 2010FA | 2011FA | 2012FA | |
| Success Rate | Female | Traditional | 68% | 69% | 70% | 70% | 73% | 71% | |
| | | Online | 60% | 58% | 60% | 64% | 61% | 62% | |
| | Male | Traditional | 68% | 69% | 69% | 68% | 72% | 70% | |
| | | Online | 54% | 54% | 60% | 58% | 61% | 64% | |
| | Gender Unknown | Traditional | 70% | 73% | 74% | 68% | 69% | 80% | |
| | | Online | 51% | 47% | 63% | 53% | 33% | 68% | |
| | Retention Rate | Female | Traditional | 84% | 85% | 83% | 83% | 86% | 85% |
| | | | Online | 80% | 80% | 78% | 80% | 80% | 80% |
| Male | | Traditional | 84% | 84% | 83% | 83% | 86% | 86% | |
| | | Online | 76% | 80% | 77% | 76% | 83% | 81% | |
| Gender Unknown | | Traditional | 86% | 87% | 85% | 81% | 85% | 91% | |
| | | Online | 74% | 66% | 77% | 75% | 67% | 89% | |
| Number of Enrollments | | Female | Traditional | 11,810 | 13,074 | 14,158 | 13,186 | 11,902 | 11,333 |
| | | | Online | 1,105 | 1,142 | 1,334 | 1,182 | 1,105 | 1,286 |
| | Male | Traditional | 8,766 | 10,274 | 11,731 | 11,312 | 9,824 | 9,991 | |
| | | Online | 414 | 459 | 718 | 683 | 666 | 725 | |
| | Gender Unknown | Traditional | 583 | 615 | 580 | 450 | 297 | 242 | |
| | | Online | 39 | 32 | 30 | 36 | 12 | 19 | |
| | Number Successful | Female | Traditional | 8,061 | 9,083 | 9,877 | 9,239 | 8,655 | 8,063 |
| | | | Online | 661 | 665 | 800 | 757 | 670 | 798 |
| Male | | Traditional | 5,942 | 7,084 | 8,055 | 7,730 | 7,043 | 7,008 | |
| | | Online | 222 | 248 | 430 | 394 | 405 | 467 | |
| Gender Unknown | | Traditional | 409 | 450 | 427 | 308 | 206 | 194 | |
| | | Online | 20 | 15 | 19 | 19 | 4 | 13 | |
| Number Retained | | Female | Traditional | 9,870 | 11,078 | 11,793 | 10,898 | 10,202 | 9,617 |
| | | | Online | 885 | 909 | 1,039 | 943 | 884 | 1,034 |
| | Male | Traditional | 7,324 | 8,653 | 9,730 | 9,373 | 8,464 | 8,614 | |
| | | Online | 316 | 366 | 556 | 520 | 551 | 584 | |
| | Gender Unknown | Traditional | 502 | 536 | 493 | 364 | 251 | 221 | |
| | | Online | 29 | 21 | 23 | 27 | 8 | 17 | |

See Addendum A for data and group definitions.

na = Not available.

Source: District Research. Based on information from Datatel Colleague. 7/30/2013 JD

Los Medanos College including Brentwood Center
Level 3 Accreditation Tables - Aggregated by Measure, Demographic Group and Instruction Method

| | | ALL COURSES BY AGE GROUP | | | | | | | |
|-----------------------|--------------------|---------------------------------|---------------|---------------|---------------|---------------|---------------|---------------|-------|
| ALL COURSES | AGE GROUP | Instr. Method | 2007FA | 2008FA | 2009FA | 2010FA | 2011FA | 2012FA | |
| Success Rate | < 20 years old | Traditional | 64% | 67% | 68% | 68% | 72% | 72% | |
| | | Online | 53% | 53% | 61% | 56% | 59% | 64% | |
| | 20 to 24 years old | Traditional | 64% | 66% | 67% | 66% | 69% | 69% | |
| | | Online | 49% | 54% | 56% | 62% | 58% | 63% | |
| | 25 to 49 years old | Traditional | 76% | 76% | 74% | 74% | 76% | 72% | |
| | | Online | 63% | 58% | 59% | 62% | 60% | 62% | |
| | 50 + years old | Traditional | 83% | 80% | 79% | 78% | 79% | 79% | |
| | | Online | 72% | 77% | 82% | 74% | 77% | 64% | |
| | Age unknown | Traditional | 100% | 67% | 67% | 67% | | | |
| | Retention Rate | < 20 years old | Traditional | 83% | 85% | 84% | 83% | 87% | 88% |
| | | | Online | 77% | 77% | 79% | 76% | 81% | 84% |
| | | 20 to 24 years old | Traditional | 80% | 81% | 81% | 81% | 84% | 83% |
| Online | | | 73% | 76% | 76% | 77% | 78% | 78% | |
| 25 to 49 years old | | Traditional | 87% | 87% | 84% | 84% | 87% | 85% | |
| | | Online | 82% | 82% | 77% | 79% | 82% | 81% | |
| 50 + years old | | Traditional | 91% | 90% | 87% | 85% | 87% | 88% | |
| | | Online | 86% | 89% | 87% | 83% | 89% | 84% | |
| Age unknown | | Traditional | 100% | 100% | 92% | 100% | | | |
| Number of Enrollments | | < 20 years old | Traditional | 8,446 | 10,188 | 10,765 | 9,918 | 8,484 | 8,380 |
| | | | Online | 354 | 420 | 646 | 471 | 395 | 416 |
| | | 20 to 24 years old | Traditional | 6,051 | 6,669 | 7,483 | 7,897 | 7,305 | 7,409 |
| | Online | | 409 | 484 | 580 | 590 | 567 | 717 | |
| | 25 to 49 years old | Traditional | 5,810 | 6,244 | 7,228 | 6,334 | 5,508 | 5,114 | |
| | | Online | 642 | 628 | 751 | 685 | 683 | 751 | |
| | 50 + years old | Traditional | 847 | 859 | 981 | 796 | 726 | 663 | |
| | | Online | 153 | 101 | 105 | 155 | 138 | 146 | |
| | Age unknown | Traditional | 5 | 3 | 12 | 3 | | | |
| | Number Successful | < 20 years old | Traditional | 5,424 | 6,801 | 7,272 | 6,747 | 6,130 | 6,010 |
| | | | Online | 187 | 222 | 395 | 264 | 234 | 266 |
| | | 20 to 24 years old | Traditional | 3,871 | 4,394 | 4,987 | 5,245 | 5,034 | 5,077 |
| Online | | | 200 | 261 | 325 | 367 | 330 | 451 | |
| 25 to 49 years old | | Traditional | 4,405 | 4,733 | 5,317 | 4,663 | 4,170 | 3,656 | |
| | | Online | 406 | 367 | 443 | 425 | 409 | 468 | |
| 50 + years old | | Traditional | 707 | 687 | 775 | 620 | 570 | 522 | |
| | | Online | 110 | 78 | 86 | 114 | 106 | 93 | |
| Age unknown | | Traditional | 5 | 2 | 8 | 2 | | | |
| Number Retained | | < 20 years old | Traditional | 7,007 | 8,634 | 9,021 | 8,254 | 7,388 | 7,387 |
| | | | Online | 273 | 324 | 512 | 360 | 318 | 349 |
| | | 20 to 24 years old | Traditional | 4,870 | 5,416 | 6,078 | 6,366 | 6,114 | 6,149 |
| | Online | | 300 | 368 | 438 | 457 | 442 | 556 | |
| | 25 to 49 years old | Traditional | 5,046 | 5,441 | 6,056 | 5,334 | 4,780 | 4,334 | |
| | | Online | 525 | 514 | 577 | 544 | 560 | 608 | |
| | 50 + years old | Traditional | 768 | 773 | 850 | 678 | 635 | 582 | |
| | | Online | 132 | 90 | 91 | 129 | 123 | 122 | |
| | Age unknown | Traditional | 5 | 3 | 11 | 3 | | | |

See Addendum A for data and group definitions.

na = Not available.

Source: District Research. Based on information from Datatel Colleague. 7/30/2013 JD

Los Medanos College including Brentwood Center
Level 3 Accreditation Tables - Aggregated by Measure, Demographic Group and Instruction Method

| ALL COURSES BY RACE/ETHNICITY | | | | | | | | | |
|--------------------------------------|-----------------------|----------------------|---------------|---------------|---------------|---------------|---------------|---------------|-------|
| ALL COURSES | RACE/ETHNICITY | Instr. Method | 2007FA | 2008FA | 2009FA | 2010FA | 2011FA | 2012FA | |
| Success Rate | African American | Traditional | 54% | 54% | 55% | 55% | 61% | 60% | |
| | | Online | 42% | 40% | 45% | 40% | 44% | 42% | |
| | Asian | Traditional | 71% | 75% | 75% | 74% | 76% | 80% | |
| | | Online | 58% | 67% | 62% | 75% | 57% | 67% | |
| | Hispanic | Traditional | 68% | 69% | 69% | 69% | 73% | 70% | |
| | | Online | 55% | 59% | 62% | 62% | 59% | 66% | |
| | White | Traditional | 74% | 76% | 75% | 75% | 77% | 76% | |
| | | Online | 65% | 62% | 68% | 68% | 71% | 72% | |
| | Other/Undeclared | Traditional | 68% | 66% | 70% | 71% | 72% | 68% | |
| | | Online | 60% | 54% | 53% | 64% | 58% | 62% | |
| | Retention Rate | African American | Traditional | 78% | 77% | 76% | 76% | 82% | 82% |
| | | | Online | 76% | 77% | 70% | 65% | 80% | 71% |
| | | Asian | Traditional | 84% | 88% | 86% | 85% | 88% | 89% |
| | | | Online | 78% | 83% | 74% | 87% | 79% | 89% |
| Hispanic | | Traditional | 84% | 85% | 83% | 83% | 86% | 85% | |
| | | Online | 75% | 76% | 81% | 80% | 78% | 81% | |
| White | | Traditional | 86% | 88% | 86% | 85% | 87% | 87% | |
| | | Online | 82% | 81% | 81% | 81% | 84% | 84% | |
| Other/Undeclared | | Traditional | 83% | 83% | 84% | 83% | 85% | 84% | |
| | | Online | 78% | 79% | 77% | 80% | 80% | 79% | |
| Number of Enrollments | | African American | Traditional | 3,392 | 4,281 | 4,595 | 4,184 | 3,754 | 3,498 |
| | | | Online | 270 | 302 | 389 | 328 | 308 | 397 |
| | | Asian | Traditional | 2,419 | 2,720 | 2,822 | 2,692 | 2,377 | 2,343 |
| | | | Online | 144 | 146 | 175 | 153 | 170 | 201 |
| | Hispanic | Traditional | 6,049 | 6,971 | 7,416 | 7,327 | 6,883 | 7,283 | |
| | | Online | 284 | 328 | 511 | 486 | 463 | 547 | |
| | White | Traditional | 7,511 | 7,957 | 8,191 | 7,419 | 6,338 | 5,934 | |
| | | Online | 699 | 658 | 739 | 704 | 655 | 663 | |
| | Other/Undeclared | Traditional | 1,788 | 2,034 | 3,445 | 3,326 | 2,671 | 2,508 | |
| | | Online | 161 | 199 | 268 | 230 | 187 | 222 | |
| | Number Successful | African American | Traditional | 1,837 | 2,331 | 2,538 | 2,315 | 2,303 | 2,081 |
| | | | Online | 114 | 120 | 175 | 130 | 135 | 165 |
| | | Asian | Traditional | 1,724 | 2,041 | 2,126 | 1,997 | 1,806 | 1,879 |
| | | | Online | 83 | 98 | 108 | 115 | 97 | 134 |
| Hispanic | | Traditional | 4,095 | 4,825 | 5,127 | 5,074 | 5,010 | 5,113 | |
| | | Online | 157 | 192 | 317 | 302 | 273 | 362 | |
| White | | Traditional | 5,545 | 6,079 | 6,154 | 5,546 | 4,873 | 4,485 | |
| | | Online | 453 | 410 | 506 | 476 | 466 | 479 | |
| Other/Undeclared | | Traditional | 1,211 | 1,341 | 2,414 | 2,345 | 1,912 | 1,707 | |
| | | Online | 96 | 108 | 143 | 147 | 108 | 138 | |
| Number Retained | | African American | Traditional | 2,644 | 3,298 | 3,509 | 3,174 | 3,093 | 2,847 |
| | | | Online | 204 | 234 | 272 | 214 | 245 | 283 |
| | | Asian | Traditional | 2,029 | 2,385 | 2,416 | 2,289 | 2,089 | 2,096 |
| | | | Online | 113 | 121 | 129 | 133 | 135 | 178 |
| | Hispanic | Traditional | 5,067 | 5,919 | 6,192 | 6,108 | 5,923 | 6,226 | |
| | | Online | 214 | 250 | 415 | 387 | 361 | 443 | |
| | White | Traditional | 6,476 | 6,968 | 7,011 | 6,294 | 5,534 | 5,169 | |
| | | Online | 573 | 533 | 595 | 573 | 552 | 556 | |
| | Other/Undeclared | Traditional | 1,480 | 1,697 | 2,888 | 2,770 | 2,278 | 2,114 | |
| | | Online | 126 | 158 | 207 | 183 | 150 | 175 | |

See Addendum A for data and group definitions.

na = Not available.

Source: District Research. Based on information from Datatel Colleague. 7/30/2013 JD

Los Medanos College including Brentwood Center
Level 3 Accreditation Tables - Aggregated by Measure, Demographic Group and Instruction Method

| BASIC SKILLS COURSES BY GENDER | | | | | | | | | |
|---------------------------------------|-------------------|---------------|-------------|--------|--------|--------|--------|--------|-----|
| BASIC SKILLS | GENDER | Instr. Method | 2007FA | 2008FA | 2009FA | 2010FA | 2011FA | 2012FA | |
| Success Rate | Female | Traditional | 61% | 65% | 68% | 65% | 70% | 63% | |
| | | Online | 67% | 69% | 70% | 52% | 55% | 57% | |
| | Male | Traditional | 49% | 54% | 56% | 54% | 56% | 54% | |
| | | Online | 67% | 67% | 78% | 78% | 78% | 50% | |
| | Gender Unknown | Traditional | 54% | 70% | 69% | 63% | 69% | 72% | |
| | | Online | | | | | | | |
| | Retention Rate | Female | Traditional | 82% | 84% | 83% | 82% | 85% | 82% |
| | | | Online | 81% | 85% | 91% | 84% | 72% | 78% |
| Male | | Traditional | 77% | 78% | 80% | 75% | 77% | 78% | |
| | | Online | 89% | 100% | 78% | 78% | 89% | 65% | |
| Gender Unknown | | Traditional | 84% | 85% | 85% | 77% | 92% | 84% | |
| | | Online | | | | 100% | | | |
| Number of Enrollments | | Female | Traditional | 936 | 1,017 | 1,465 | 1,221 | 1,045 | 952 |
| | | | Online | 21 | 26 | 23 | 25 | 29 | 51 |
| | Male | Traditional | 528 | 722 | 856 | 760 | 622 | 626 | |
| | | Online | 9 | 12 | 9 | 9 | 9 | 20 | |
| | Gender Unknown | Traditional | 56 | 88 | 84 | 52 | 26 | 25 | |
| | | Online | | | | 1 | | | |
| | Number Successful | Female | Traditional | 570 | 666 | 989 | 797 | 730 | 603 |
| | | | Online | 14 | 18 | 16 | 13 | 16 | 29 |
| Male | | Traditional | 258 | 392 | 483 | 411 | 348 | 337 | |
| | | Online | 6 | 8 | 7 | 7 | 7 | 10 | |
| Gender Unknown | | Traditional | 30 | 62 | 58 | 33 | 18 | 18 | |
| | | Online | | | | | | | |
| Number Retained | | Female | Traditional | 764 | 855 | 1,209 | 997 | 893 | 779 |
| | | | Online | 17 | 22 | 21 | 21 | 21 | 40 |
| | Male | Traditional | 406 | 564 | 685 | 571 | 481 | 487 | |
| | | Online | 8 | 12 | 7 | 7 | 8 | 13 | |
| | Gender Unknown | Traditional | 47 | 75 | 71 | 40 | 24 | 21 | |
| | | Online | | | | 1 | | | |

See Addendum A for data and group definitions.

na = Not available.

Source: District Research. Based on information from Datatel Colleague. 7/30/2013 JD

Los Medanos College including Brentwood Center
Level 3 Accreditation Tables - Aggregated by Measure, Demographic Group and Instruction Method

| BASIC SKILLS COURSES BY AGE GROUP | | | | | | | | | |
|--|--------------------|----------------------|---------------|---------------|---------------|---------------|---------------|---------------|-----|
| BASIC SKILLS | AGE GROUP | Instr. Method | 2007FA | 2008FA | 2009FA | 2010FA | 2011FA | 2012FA | |
| Success Rate | < 20 years old | Traditional | 53% | 56% | 65% | 55% | 61% | 63% | |
| | | Online | 100% | 45% | 75% | 57% | 75% | 55% | |
| | 20 to 24 years old | Traditional | 45% | 57% | 55% | 51% | 57% | 47% | |
| | | Online | 57% | 80% | 78% | 78% | 50% | 58% | |
| | 25 to 49 years old | Traditional | 69% | 70% | 66% | 72% | 72% | 64% | |
| | | Online | 57% | 73% | 67% | 47% | 62% | 57% | |
| | 50 + years old | Traditional | 62% | 78% | 74% | 69% | 74% | 66% | |
| | | Online | | 100% | | | 100% | 25% | |
| | Retention Rate | < 20 years old | Traditional | 80% | 81% | 85% | 77% | 83% | 85% |
| | | | Online | 100% | 73% | 88% | 86% | 100% | 90% |
| 20 to 24 years old | | Traditional | 74% | 77% | 74% | 76% | 79% | 71% | |
| | | Online | 71% | 100% | 89% | 78% | 67% | 58% | |
| 25 to 49 years old | | Traditional | 85% | 84% | 81% | 83% | 85% | 81% | |
| | | Online | 79% | 91% | 87% | 84% | 76% | 74% | |
| 50 + years old | | Traditional | 80% | 94% | 84% | 80% | 85% | 83% | |
| | | Online | 100% | 100% | | | 100% | 50% | |
| Number of Enrollments | | < 20 years old | Traditional | 721 | 869 | 969 | 746 | 636 | 678 |
| | | | Online | 8 | 11 | 8 | 7 | 4 | 20 |
| | 20 to 24 years old | Traditional | 300 | 364 | 501 | 458 | 388 | 373 | |
| | | Online | 7 | 15 | 9 | 9 | 12 | 12 | |
| | 25 to 49 years old | Traditional | 454 | 508 | 803 | 730 | 564 | 470 | |
| | | Online | 14 | 11 | 15 | 19 | 21 | 35 | |
| | 50 + years old | Traditional | 45 | 86 | 132 | 99 | 105 | 82 | |
| | | Online | 1 | 1 | | | 1 | 4 | |
| | Number Successful | < 20 years old | Traditional | 385 | 489 | 630 | 412 | 390 | 426 |
| | | | Online | 8 | 5 | 6 | 4 | 3 | 11 |
| 20 to 24 years old | | Traditional | 134 | 207 | 274 | 235 | 220 | 177 | |
| | | Online | 4 | 12 | 7 | 7 | 6 | 7 | |
| 25 to 49 years old | | Traditional | 311 | 357 | 528 | 526 | 408 | 301 | |
| | | Online | 8 | 8 | 10 | 9 | 13 | 20 | |
| 50 + years old | | Traditional | 28 | 67 | 98 | 68 | 78 | 54 | |
| | | Online | | 1 | | | 1 | 1 | |
| Number Retained | | < 20 years old | Traditional | 574 | 708 | 828 | 573 | 525 | 573 |
| | | | Online | 8 | 8 | 7 | 6 | 4 | 18 |
| | 20 to 24 years old | Traditional | 221 | 280 | 373 | 348 | 306 | 265 | |
| | | Online | 5 | 15 | 8 | 7 | 8 | 7 | |
| | 25 to 49 years old | Traditional | 386 | 425 | 653 | 608 | 478 | 381 | |
| | | Online | 11 | 10 | 13 | 16 | 16 | 26 | |
| | 50 + years old | Traditional | 36 | 81 | 111 | 79 | 89 | 68 | |
| | | Online | 1 | 1 | | | 1 | 2 | |

See Addendum A for data and group definitions.

na = Not available.

Source: District Research. Based on information from Datatel Colleague. 7/30/2013 JD

Los Medanos College including Brentwood Center
Level 3 Accreditation Tables - Aggregated by Measure, Demographic Group and Instruction Method

| BASIC SKILLS COURSES BY RACE/ETHNICITY | | | | | | | | | |
|---|-----------------------|----------------------|---------------|---------------|---------------|---------------|---------------|---------------|------|
| BASIC SKILLS | RACE/ETHNICITY | Instr. Method | 2007FA | 2008FA | 2009FA | 2010FA | 2011FA | 2012FA | |
| Success Rate | African American | Traditional | 38% | 49% | 51% | 47% | 48% | 44% | |
| | | Online | 100% | 60% | 73% | 40% | 36% | 39% | |
| | Asian | Traditional | 63% | 69% | 74% | 67% | 79% | 78% | |
| | | Online | 100% | 100% | 60% | | 100% | 100% | |
| | Hispanic | Traditional | 63% | 66% | 66% | 66% | 70% | 62% | |
| | | Online | 50% | 80% | 75% | 100% | 71% | 56% | |
| | White | Traditional | 62% | 64% | 67% | 69% | 68% | 65% | |
| | | Online | 60% | 67% | 80% | 59% | 54% | 74% | |
| | Other/Undeclared | Traditional | 53% | 60% | 65% | 54% | 58% | 53% | |
| | | Online | 75% | 50% | 50% | 67% | 100% | 22% | |
| | Retention Rate | African American | Traditional | 69% | 72% | 74% | 68% | 72% | 69% |
| | | | Online | 100% | 80% | 91% | 70% | 73% | 56% |
| | | Asian | Traditional | 80% | 89% | 86% | 85% | 91% | 89% |
| | | | Online | 100% | 100% | 60% | | 100% | 100% |
| Hispanic | | Traditional | 85% | 86% | 85% | 84% | 85% | 82% | |
| | | Online | 67% | 100% | 100% | 100% | 71% | 78% | |
| White | | Traditional | 80% | 83% | 82% | 82% | 86% | 82% | |
| | | Online | 80% | 92% | 90% | 88% | 69% | 83% | |
| Other/Undeclared | | Traditional | 81% | 81% | 84% | 74% | 82% | 81% | |
| | | Online | 100% | 75% | 100% | 100% | 100% | 78% | |
| Number of Enrollments | | African American | Traditional | 333 | 438 | 540 | 486 | 409 | 343 |
| | | | Online | 3 | 10 | 11 | 10 | 11 | 18 |
| | | Asian | Traditional | 153 | 157 | 219 | 202 | 210 | 193 |
| | | | Online | 2 | 2 | 5 | 1 | 2 | 3 |
| | Hispanic | Traditional | 638 | 709 | 912 | 797 | 654 | 670 | |
| | | Online | 6 | 10 | 4 | 4 | 7 | 18 | |
| | White | Traditional | 264 | 367 | 417 | 352 | 283 | 257 | |
| | | Online | 15 | 12 | 10 | 17 | 13 | 23 | |
| | Other/Undeclared | Traditional | 132 | 156 | 317 | 196 | 137 | 140 | |
| | | Online | 4 | 4 | 2 | 3 | 5 | 9 | |
| | Number Successful | African American | Traditional | 125 | 216 | 278 | 228 | 197 | 152 |
| | | | Online | 3 | 6 | 8 | 4 | 4 | 7 |
| | | Asian | Traditional | 96 | 108 | 163 | 136 | 166 | 151 |
| | | | Online | 2 | 2 | 3 | | 2 | 3 |
| Hispanic | | Traditional | 404 | 469 | 603 | 530 | 461 | 414 | |
| | | Online | 3 | 8 | 3 | 4 | 5 | 10 | |
| White | | Traditional | 163 | 234 | 281 | 242 | 193 | 167 | |
| | | Online | 9 | 8 | 8 | 10 | 7 | 17 | |
| Other/Undeclared | | Traditional | 70 | 93 | 205 | 105 | 79 | 74 | |
| | | Online | 3 | 2 | 1 | 2 | 5 | 2 | |
| Number Retained | | African American | Traditional | 230 | 316 | 397 | 331 | 296 | 237 |
| | | | Online | 3 | 8 | 10 | 7 | 8 | 10 |
| | | Asian | Traditional | 123 | 140 | 188 | 172 | 192 | 172 |
| | | | Online | 2 | 2 | 3 | | 2 | 3 |
| | Hispanic | Traditional | 545 | 608 | 774 | 670 | 555 | 552 | |
| | | Online | 4 | 10 | 4 | 4 | 5 | 14 | |
| | White | Traditional | 212 | 303 | 341 | 289 | 242 | 212 | |
| | | Online | 12 | 11 | 9 | 15 | 9 | 19 | |
| | Other/Undeclared | Traditional | 107 | 127 | 265 | 146 | 113 | 114 | |
| | | Online | 4 | 3 | 2 | 3 | 5 | 7 | |

See Addendum A for data and group definitions.

na = Not available.

Source: District Research. Based on information from Datatel Colleague. 7/30/2013 JD

Los Medanos College including Brentwood Center
Level 3 Accreditation Tables - Aggregated by Measure, Demographic Group and Instruction Method

| CAREER AND TECHNICAL EDUCATION COURSES BY GENDER | | | | | | | | | |
|---|-------------------|---------------|-------------|--------|--------|--------|--------|--------|-------|
| CTE | GENDER | Instr. Method | 2007FA | 2008FA | 2009FA | 2010FA | 2011FA | 2012FA | |
| Success Rate | Female | Traditional | 74% | 72% | 72% | 72% | 74% | 72% | |
| | | Online | 61% | 55% | 58% | 60% | 60% | 60% | |
| | Male | Traditional | 76% | 77% | 76% | 73% | 74% | 73% | |
| | | Online | 47% | 51% | 53% | 58% | 58% | 67% | |
| | Gender Unknown | Traditional | 78% | 80% | 83% | 75% | 77% | 90% | |
| | | Online | 35% | 50% | 44% | 73% | | 88% | |
| | Retention Rate | Female | Traditional | 88% | 89% | 87% | 85% | 86% | 87% |
| | | | Online | 85% | 81% | 78% | 81% | 82% | 81% |
| Male | | Traditional | 89% | 88% | 89% | 86% | 87% | 88% | |
| | | Online | 74% | 84% | 77% | 76% | 83% | 85% | |
| Gender Unknown | | Traditional | 93% | 94% | 91% | 86% | 89% | 98% | |
| | | Online | 65% | 75% | 56% | 82% | | 100% | |
| Number of Enrollments | | Female | Traditional | 2,933 | 2,920 | 3,027 | 2,400 | 2,035 | 1,865 |
| | | | Online | 473 | 480 | 444 | 427 | 384 | 509 |
| | Male | Traditional | 2,840 | 2,902 | 3,442 | 3,042 | 2,597 | 2,566 | |
| | | Online | 182 | 176 | 200 | 210 | 220 | 280 | |
| | Gender Unknown | Traditional | 148 | 141 | 139 | 88 | 53 | 50 | |
| | | Online | 23 | 8 | 9 | 11 | | 8 | |
| | Number Successful | Female | Traditional | 2,164 | 2,088 | 2,193 | 1,736 | 1,515 | 1,349 |
| | | | Online | 289 | 266 | 259 | 257 | 229 | 307 |
| Male | | Traditional | 2,172 | 2,226 | 2,617 | 2,206 | 1,909 | 1,865 | |
| | | Online | 85 | 90 | 106 | 122 | 128 | 187 | |
| Gender Unknown | | Traditional | 115 | 113 | 115 | 66 | 41 | 45 | |
| | | Online | 8 | 4 | 4 | 8 | | 7 | |
| Number Retained | | Female | Traditional | 2,595 | 2,603 | 2,645 | 2,051 | 1,759 | 1,624 |
| | | | Online | 404 | 391 | 348 | 345 | 315 | 411 |
| | Male | Traditional | 2,526 | 2,567 | 3,071 | 2,620 | 2,272 | 2,241 | |
| | | Online | 134 | 148 | 153 | 160 | 182 | 238 | |
| | Gender Unknown | Traditional | 138 | 132 | 127 | 76 | 47 | 49 | |
| | | Online | 15 | 6 | 5 | 9 | | 8 | |

See Addendum A for data and group definitions.

na = Not available.

Source: District Research. Based on information from Datatel Colleague. 7/30/2013 JD

Los Medanos College including Brentwood Center
Level 3 Accreditation Tables - Aggregated by Measure, Demographic Group and Instruction Method

| CAREER AND TECHNICAL EDUCATION COURSES BY AGE GROUP | | | | | | | | | |
|--|--------------------|--------------------|-------------|--------|--------|--------|--------|--------|-------|
| CTE | AGE GROUP | Instr. Method | 2007FA | 2008FA | 2009FA | 2010FA | 2011FA | 2012FA | |
| Success Rate | < 20 years old | Traditional | 62% | 63% | 62% | 62% | 68% | 65% | |
| | | Online | 37% | 46% | 49% | 34% | 53% | 69% | |
| | 20 to 24 years old | Traditional | 70% | 70% | 70% | 70% | 69% | 72% | |
| | | Online | 38% | 48% | 48% | 61% | 45% | 63% | |
| | 25 to 49 years old | Traditional | 82% | 81% | 81% | 78% | 80% | 76% | |
| | | Online | 65% | 55% | 58% | 60% | 59% | 61% | |
| | 50 + years old | Traditional | 86% | 83% | 83% | 83% | 83% | 88% | |
| | | Online | 73% | 77% | 87% | 81% | 84% | 65% | |
| | Age unknown | Traditional | 100% | 50% | 75% | | | | |
| | Retention Rate | < 20 years old | Traditional | 85% | 85% | 86% | 83% | 87% | 85% |
| | | | Online | 75% | 81% | 76% | 67% | 78% | 90% |
| | | 20 to 24 years old | Traditional | 85% | 86% | 86% | 84% | 84% | 86% |
| Online | | | 70% | 77% | 75% | 76% | 76% | 78% | |
| 25 to 49 years old | | Traditional | 92% | 92% | 91% | 88% | 89% | 89% | |
| | | Online | 86% | 83% | 76% | 82% | 83% | 83% | |
| 50 + years old | | Traditional | 93% | 94% | 90% | 89% | 88% | 95% | |
| | | Online | 88% | 91% | 92% | 89% | 94% | 82% | |
| Age unknown | | Traditional | 100% | 100% | 88% | | | | |
| Number of Enrollments | | < 20 years old | Traditional | 1,248 | 1,363 | 1,304 | 1,196 | 1,121 | 1,016 |
| | | | Online | 108 | 96 | 105 | 102 | 80 | 106 |
| | | 20 to 24 years old | Traditional | 1,489 | 1,533 | 1,819 | 1,640 | 1,411 | 1,457 |
| | Online | | 132 | 172 | 160 | 153 | 132 | 222 | |
| | 25 to 49 years old | Traditional | 2,776 | 2,687 | 3,008 | 2,323 | 1,873 | 1,772 | |
| | | Online | 325 | 326 | 327 | 293 | 302 | 374 | |
| | 50 + years old | Traditional | 404 | 378 | 469 | 371 | 280 | 236 | |
| | | Online | 113 | 70 | 61 | 100 | 90 | 95 | |
| | Age unknown | Traditional | 4 | 2 | 8 | | | | |
| | Number Successful | < 20 years old | Traditional | 773 | 861 | 811 | 741 | 758 | 662 |
| | | | Online | 40 | 44 | 51 | 35 | 42 | 73 |
| | | 20 to 24 years old | Traditional | 1,037 | 1,077 | 1,273 | 1,143 | 971 | 1,043 |
| Online | | | 50 | 82 | 76 | 94 | 60 | 139 | |
| 25 to 49 years old | | Traditional | 2,290 | 2,173 | 2,448 | 1,816 | 1,505 | 1,347 | |
| | | Online | 210 | 180 | 189 | 177 | 179 | 227 | |
| 50 + years old | | Traditional | 347 | 315 | 387 | 308 | 231 | 207 | |
| | | Online | 82 | 54 | 53 | 81 | 76 | 62 | |
| Age unknown | | Traditional | 4 | 1 | 6 | | | | |
| Number Retained | | < 20 years old | Traditional | 1,055 | 1,152 | 1,116 | 988 | 971 | 868 |
| | | | Online | 81 | 78 | 80 | 68 | 62 | 95 |
| | | 20 to 24 years old | Traditional | 1,270 | 1,319 | 1,573 | 1,379 | 1,190 | 1,248 |
| | Online | | 92 | 132 | 120 | 117 | 100 | 173 | |
| | 25 to 49 years old | Traditional | 2,554 | 2,474 | 2,723 | 2,050 | 1,671 | 1,573 | |
| | | Online | 281 | 271 | 250 | 240 | 250 | 311 | |
| | 50 + years old | Traditional | 376 | 355 | 424 | 330 | 246 | 225 | |
| | | Online | 99 | 64 | 56 | 89 | 85 | 78 | |
| | Age unknown | Traditional | 4 | 2 | 7 | | | | |

See Addendum A for data and group definitions.

na = Not available.

Source: District Research. Based on information from Datatel Colleague. 7/30/2013 JD

Los Medanos College including Brentwood Center
Level 3 Accreditation Tables - Aggregated by Measure, Demographic Group and Instruction Method

| CAREER AND TECHNICAL EDUCATION COURSES BY AGE RACE/ETHNICITY | | | | | | | | | |
|---|-----------------------|----------------------|---------------|---------------|---------------|---------------|---------------|---------------|-----|
| CTE | RACE/ETHNICITY | Instr. Method | 2007FA | 2008FA | 2009FA | 2010FA | 2011FA | 2012FA | |
| Success Rate | African American | Traditional | 59% | 55% | 57% | 54% | 59% | 54% | |
| | | Online | 42% | 39% | 44% | 32% | 41% | 38% | |
| | Asian | Traditional | 82% | 80% | 81% | 82% | 77% | 87% | |
| | | Online | 49% | 61% | 63% | 72% | 53% | 60% | |
| | Hispanic | Traditional | 74% | 73% | 75% | 72% | 74% | 73% | |
| | | Online | 53% | 58% | 52% | 58% | 55% | 65% | |
| | White | Traditional | 81% | 83% | 81% | 78% | 80% | 80% | |
| | | Online | 65% | 65% | 74% | 71% | 72% | 78% | |
| | Other/Undeclared | Traditional | 74% | 68% | 74% | 74% | 73% | 66% | |
| | | Online | 62% | 43% | 31% | 68% | 51% | 66% | |
| | Retention Rate | African American | Traditional | 83% | 81% | 81% | 76% | 80% | 81% |
| | | | Online | 78% | 80% | 71% | 65% | 80% | 73% |
| | | Asian | Traditional | 90% | 90% | 92% | 90% | 89% | 93% |
| | | | Online | 76% | 80% | 78% | 91% | 77% | 86% |
| Hispanic | | Traditional | 88% | 89% | 89% | 87% | 87% | 88% | |
| | | Online | 79% | 82% | 75% | 82% | 79% | 83% | |
| White | | Traditional | 91% | 92% | 90% | 88% | 90% | 90% | |
| | | Online | 86% | 86% | 86% | 83% | 87% | 88% | |
| Other/Undeclared | | Traditional | 88% | 86% | 89% | 86% | 88% | 83% | |
| | | Online | 81% | 77% | 66% | 81% | 77% | 81% | |
| Number of Enrollments | | African American | Traditional | 924 | 1,002 | 1,185 | 895 | 738 | 730 |
| | | | Online | 155 | 166 | 140 | 135 | 108 | 176 |
| | | Asian | Traditional | 563 | 598 | 673 | 628 | 496 | 460 |
| | | | Online | 55 | 54 | 51 | 43 | 62 | 84 |
| | Hispanic | Traditional | 1,576 | 1,493 | 1,594 | 1,467 | 1,304 | 1,234 | |
| | | Online | 105 | 113 | 143 | 139 | 136 | 178 | |
| | White | Traditional | 2,415 | 2,374 | 2,439 | 1,949 | 1,616 | 1,484 | |
| | | Online | 290 | 248 | 242 | 263 | 255 | 271 | |
| | Other/Undeclared | Traditional | 443 | 496 | 717 | 591 | 531 | 573 | |
| | | Online | 73 | 83 | 77 | 68 | 43 | 88 | |
| | Number Successful | African American | Traditional | 549 | 553 | 676 | 481 | 439 | 395 |
| | | | Online | 65 | 65 | 61 | 43 | 44 | 67 |
| | | Asian | Traditional | 459 | 479 | 548 | 518 | 382 | 400 |
| | | | Online | 27 | 33 | 32 | 31 | 33 | 50 |
| Hispanic | | Traditional | 1,170 | 1,095 | 1,189 | 1,057 | 965 | 896 | |
| | | Online | 56 | 66 | 74 | 81 | 75 | 115 | |
| White | | Traditional | 1,946 | 1,965 | 1,980 | 1,515 | 1,292 | 1,191 | |
| | | Online | 189 | 160 | 178 | 186 | 183 | 211 | |
| Other/Undeclared | | Traditional | 327 | 335 | 532 | 437 | 387 | 377 | |
| | | Online | 45 | 36 | 24 | 46 | 22 | 58 | |
| Number Retained | | African American | Traditional | 768 | 815 | 962 | 683 | 590 | 590 |
| | | | Online | 121 | 132 | 100 | 88 | 86 | 128 |
| | | Asian | Traditional | 504 | 540 | 619 | 568 | 443 | 428 |
| | | | Online | 42 | 43 | 40 | 39 | 48 | 72 |
| | Hispanic | Traditional | 1,394 | 1,325 | 1,421 | 1,278 | 1,131 | 1,082 | |
| | | Online | 83 | 93 | 107 | 114 | 108 | 148 | |
| | White | Traditional | 2,205 | 2,194 | 2,202 | 1,711 | 1,449 | 1,338 | |
| | | Online | 248 | 213 | 208 | 218 | 222 | 238 | |
| | Other/Undeclared | Traditional | 388 | 428 | 639 | 507 | 465 | 476 | |
| | | Online | 59 | 64 | 51 | 55 | 33 | 71 | |

See Addendum A for data and group definitions.

na = Not available.

Source: District Research. Based on information from Datatel Colleague. 7/30/2013 JD

Los Medanos College including Brentwood Center
Level 3 Accreditation Tables - Aggregated by Measure, Demographic Group and Instruction Method

| DEGREE APPLICABLE COURSES BY GENDER | | | | | | | | | |
|--|-------------------|---------------|-------------|--------|--------|--------|--------|--------|--------|
| DEGREE APPL. | GENDER | Instr. Method | 2007FA | 2008FA | 2009FA | 2010FA | 2011FA | 2012FA | |
| Success Rate | Female | Traditional | 68% | 69% | 70% | 70% | 73% | 72% | |
| | | Online | 60% | 58% | 60% | 64% | 61% | 62% | |
| | Male | Traditional | 67% | 69% | 69% | 69% | 73% | 71% | |
| | | Online | 53% | 53% | 59% | 57% | 61% | 65% | |
| | Gender Unknown | Traditional | 71% | 73% | 73% | 70% | 69% | 81% | |
| | | Online | 51% | 45% | 63% | 54% | 33% | 68% | |
| | Retention Rate | Female | Traditional | 83% | 84% | 83% | 83% | 86% | 85% |
| | | | Online | 80% | 79% | 78% | 80% | 80% | 80% |
| Male | | Traditional | 83% | 84% | 83% | 83% | 87% | 87% | |
| | | Online | 76% | 79% | 77% | 76% | 83% | 81% | |
| Gender Unknown | | Traditional | 86% | 87% | 84% | 81% | 84% | 92% | |
| | | Online | 74% | 65% | 77% | 74% | 67% | 89% | |
| Number of Enrollments | | Female | Traditional | 10,248 | 11,477 | 12,141 | 11,800 | 10,795 | 10,335 |
| | | | Online | 1,067 | 1,099 | 1,285 | 1,131 | 1,055 | 1,203 |
| | Male | Traditional | 7,744 | 8,999 | 10,487 | 10,442 | 9,177 | 9,302 | |
| | | Online | 404 | 445 | 706 | 672 | 652 | 701 | |
| | Gender Unknown | Traditional | 497 | 506 | 467 | 393 | 271 | 217 | |
| | | Online | 39 | 31 | 30 | 35 | 12 | 19 | |
| | Number Successful | Female | Traditional | 6,981 | 7,955 | 8,438 | 8,307 | 7,872 | 7,419 |
| | | | Online | 637 | 634 | 769 | 729 | 643 | 751 |
| Male | | Traditional | 5,223 | 6,172 | 7,205 | 7,238 | 6,679 | 6,624 | |
| | | Online | 215 | 238 | 420 | 386 | 395 | 455 | |
| Gender Unknown | | Traditional | 355 | 369 | 340 | 274 | 188 | 176 | |
| | | Online | 20 | 14 | 19 | 19 | 4 | 13 | |
| Number Retained | | Female | Traditional | 8,505 | 9,668 | 10,041 | 9,745 | 9,252 | 8,795 |
| | | | Online | 853 | 871 | 997 | 901 | 848 | 968 |
| | Male | Traditional | 6,429 | 7,547 | 8,659 | 8,704 | 7,959 | 8,067 | |
| | | Online | 307 | 352 | 546 | 511 | 539 | 568 | |
| | Gender Unknown | Traditional | 426 | 440 | 393 | 319 | 227 | 200 | |
| | | Online | 29 | 20 | 23 | 26 | 8 | 17 | |

See Addendum A for data and group definitions.

na = Not available.

Source: District Research. Based on information from Datatel Colleague. 7/30/2013 JD

Los Medanos College including Brentwood Center
Level 3 Accreditation Tables - Aggregated by Measure, Demographic Group and Instruction Method

| DEGREE APPLICABLE COURSES BY AGE GROUP | | | | | | | | | |
|---|--------------------|----------------------|---------------|---------------|---------------|---------------|---------------|---------------|-------|
| DEGREE APPL. | AGE GROUP | Instr. Method | 2007FA | 2008FA | 2009FA | 2010FA | 2011FA | 2012FA | |
| Success Rate | < 20 years old | Traditional | 65% | 67% | 68% | 69% | 73% | 72% | |
| | | Online | 51% | 53% | 61% | 56% | 59% | 65% | |
| | 20 to 24 years old | Traditional | 65% | 66% | 67% | 67% | 70% | 70% | |
| | | Online | 49% | 53% | 55% | 62% | 58% | 63% | |
| | 25 to 49 years old | Traditional | 74% | 74% | 73% | 74% | 76% | 72% | |
| | | Online | 63% | 58% | 59% | 63% | 60% | 63% | |
| | 50 + years old | Traditional | 84% | 79% | 79% | 79% | 79% | 81% | |
| | | Online | 72% | 77% | 83% | 74% | 77% | 65% | |
| | Age unknown | Traditional | 100% | 67% | 56% | 67% | | | |
| | Retention Rate | < 20 years old | Traditional | 83% | 85% | 83% | 84% | 87% | 88% |
| | | | Online | 76% | 77% | 79% | 76% | 81% | 84% |
| | | 20 to 24 years old | Traditional | 80% | 81% | 81% | 81% | 84% | 84% |
| Online | | | 73% | 75% | 75% | 77% | 78% | 78% | |
| 25 to 49 years old | | Traditional | 85% | 86% | 83% | 84% | 87% | 85% | |
| | | Online | 82% | 81% | 77% | 79% | 82% | 81% | |
| 50 + years old | | Traditional | 91% | 89% | 86% | 86% | 88% | 88% | |
| | | Online | 86% | 89% | 87% | 83% | 90% | 85% | |
| Age unknown | | Traditional | 100% | 100% | 89% | 100% | | | |
| Number of Enrollments | | < 20 years old | Traditional | 7,482 | 9,040 | 9,590 | 9,036 | 7,788 | 7,608 |
| | | | Online | 340 | 407 | 633 | 459 | 386 | 387 |
| | | 20 to 24 years old | Traditional | 5,530 | 6,094 | 6,787 | 7,380 | 6,902 | 7,027 |
| | Online | | 398 | 465 | 565 | 573 | 549 | 698 | |
| | 25 to 49 years old | Traditional | 4,714 | 5,111 | 5,902 | 5,529 | 4,933 | 4,638 | |
| | | Online | 620 | 603 | 720 | 653 | 649 | 696 | |
| | 50 + years old | Traditional | 760 | 734 | 807 | 687 | 620 | 581 | |
| | | Online | 152 | 100 | 103 | 153 | 135 | 142 | |
| | Age unknown | Traditional | 3 | 3 | 9 | 3 | | | |
| | Number Successful | < 20 years old | Traditional | 4,852 | 6,100 | 6,480 | 6,220 | 5,689 | 5,508 |
| | | | Online | 175 | 216 | 386 | 258 | 228 | 251 |
| | | 20 to 24 years old | Traditional | 3,573 | 4,010 | 4,560 | 4,968 | 4,803 | 4,893 |
| Online | | | 194 | 246 | 313 | 354 | 321 | 440 | |
| 25 to 49 years old | | Traditional | 3,493 | 3,801 | 4,303 | 4,086 | 3,756 | 3,350 | |
| | | Online | 393 | 347 | 424 | 409 | 389 | 436 | |
| 50 + years old | | Traditional | 638 | 583 | 635 | 543 | 491 | 468 | |
| | | Online | 110 | 77 | 85 | 113 | 104 | 92 | |
| Age unknown | | Traditional | 3 | 2 | 5 | 2 | | | |
| Number Retained | | < 20 years old | Traditional | 6,199 | 7,669 | 7,990 | 7,555 | 6,806 | 6,726 |
| | | | Online | 260 | 314 | 501 | 350 | 311 | 324 |
| | | 20 to 24 years old | Traditional | 4,440 | 4,936 | 5,512 | 5,960 | 5,795 | 5,875 |
| | Online | | 292 | 350 | 424 | 443 | 429 | 543 | |
| | 25 to 49 years old | Traditional | 4,027 | 4,394 | 4,886 | 4,660 | 4,292 | 3,947 | |
| | | Online | 506 | 490 | 551 | 518 | 534 | 566 | |
| | 50 + years old | Traditional | 691 | 653 | 697 | 590 | 545 | 514 | |
| | | Online | 131 | 89 | 90 | 127 | 121 | 120 | |
| | Age unknown | Traditional | 3 | 3 | 8 | 3 | | | |

See Addendum A for data and group definitions.

na = Not available.

Source: District Research. Based on information from Datatel Colleague. 7/30/2013 JD

Los Medanos College including Brentwood Center
Level 3 Accreditation Tables - Aggregated by Measure, Demographic Group and Instruction Method

| DEGREE APPLICABLE COURSES BY RACE/ETHNICITY | | | | | | | | | |
|--|-----------------------|----------------------|---------------|---------------|---------------|---------------|---------------|---------------|-------|
| DEGREE APPL. | RACE/ETHNICITY | Instr. Method | 2007FA | 2008FA | 2009FA | 2010FA | 2011FA | 2012FA | |
| Success Rate | African American | Traditional | 55% | 54% | 55% | 56% | 63% | 61% | |
| | | Online | 41% | 39% | 44% | 40% | 44% | 42% | |
| | Asian | Traditional | 71% | 75% | 75% | 75% | 76% | 80% | |
| | | Online | 57% | 66% | 62% | 75% | 57% | 66% | |
| | Hispanic | Traditional | 67% | 69% | 69% | 69% | 73% | 71% | |
| | | Online | 55% | 57% | 62% | 62% | 59% | 67% | |
| | White | Traditional | 73% | 76% | 75% | 75% | 77% | 76% | |
| | | Online | 65% | 62% | 68% | 68% | 72% | 72% | |
| | Other/Undeclared | Traditional | 68% | 66% | 70% | 71% | 72% | 69% | |
| | | Online | 59% | 54% | 54% | 64% | 56% | 64% | |
| | Retention Rate | African American | Traditional | 78% | 77% | 76% | 77% | 84% | 83% |
| | | | Online | 75% | 77% | 69% | 65% | 80% | 72% |
| | | Asian | Traditional | 83% | 87% | 85% | 85% | 88% | 90% |
| | | | Online | 78% | 83% | 74% | 87% | 79% | 89% |
| Hispanic | | Traditional | 83% | 84% | 83% | 83% | 86% | 86% | |
| | | Online | 75% | 75% | 81% | 79% | 78% | 81% | |
| White | | Traditional | 85% | 87% | 85% | 85% | 87% | 87% | |
| | | Online | 82% | 81% | 80% | 81% | 85% | 84% | |
| Other/Undeclared | | Traditional | 82% | 83% | 83% | 84% | 85% | 84% | |
| | | Online | 77% | 80% | 78% | 79% | 80% | 79% | |
| Number of Enrollments | | African American | Traditional | 2,923 | 3,708 | 3,933 | 3,626 | 3,326 | 3,132 |
| | | | Online | 264 | 288 | 371 | 311 | 294 | 368 |
| | | Asian | Traditional | 2,163 | 2,485 | 2,491 | 2,466 | 2,161 | 2,144 |
| | | | Online | 141 | 143 | 168 | 151 | 165 | 193 |
| | Hispanic | Traditional | 5,161 | 5,994 | 6,306 | 6,427 | 6,184 | 6,560 | |
| | | Online | 276 | 311 | 500 | 473 | 447 | 522 | |
| | White | Traditional | 6,684 | 7,015 | 7,343 | 7,010 | 6,043 | 5,661 | |
| | | Online | 674 | 641 | 718 | 679 | 632 | 630 | |
| | Other/Undeclared | Traditional | 1,558 | 1,780 | 3,022 | 3,106 | 2,529 | 2,357 | |
| | | Online | 155 | 192 | 264 | 224 | 181 | 210 | |
| | Number Successful | African American | Traditional | 1,609 | 2,010 | 2,181 | 2,035 | 2,093 | 1,915 |
| | | | Online | 109 | 111 | 163 | 125 | 130 | 154 |
| | | Asian | Traditional | 1,535 | 1,864 | 1,859 | 1,844 | 1,635 | 1,724 |
| | | | Online | 80 | 95 | 104 | 114 | 94 | 127 |
| Hispanic | | Traditional | 3,480 | 4,135 | 4,355 | 4,460 | 4,510 | 4,654 | |
| | | Online | 152 | 178 | 310 | 292 | 263 | 348 | |
| White | | Traditional | 4,876 | 5,317 | 5,477 | 5,260 | 4,671 | 4,303 | |
| | | Online | 440 | 398 | 489 | 460 | 453 | 456 | |
| Other/Undeclared | | Traditional | 1,059 | 1,170 | 2,111 | 2,220 | 1,830 | 1,623 | |
| | | Online | 91 | 104 | 142 | 143 | 102 | 134 | |
| Number Retained | | African American | Traditional | 2,290 | 2,854 | 2,992 | 2,777 | 2,780 | 2,589 |
| | | | Online | 198 | 222 | 256 | 202 | 236 | 264 |
| | | Asian | Traditional | 1,803 | 2,171 | 2,117 | 2,094 | 1,891 | 1,918 |
| | | | Online | 110 | 118 | 125 | 132 | 130 | 171 |
| | Hispanic | Traditional | 4,279 | 5,056 | 5,222 | 5,343 | 5,325 | 5,625 | |
| | | Online | 208 | 233 | 404 | 376 | 350 | 423 | |
| | White | Traditional | 5,712 | 6,097 | 6,244 | 5,953 | 5,282 | 4,941 | |
| | | Online | 553 | 517 | 576 | 551 | 535 | 529 | |
| | Other/Undeclared | Traditional | 1,276 | 1,477 | 2,518 | 2,601 | 2,160 | 1,989 | |
| | | Online | 120 | 153 | 205 | 177 | 144 | 166 | |

See Addendum A for data and group definitions.

na = Not available.

Source: District Research. Based on information from Datatel Colleague. 7/30/2013 JD

Los Medanos College including Brentwood Center
Level 3 Accreditation Tables - Aggregated by Measure, Demographic Group and Instruction Method

| PERSISTENCE BY GENDER | | | | | | | | | |
|--|--|---------------|-------------|--------|--------|--------|--------|--------|-------|
| PERSISTENCE | GENDER | Instr. Method | 2007FA | 2008FA | 2009FA | 2010FA | 2011FA | 2012FA | |
| Fall-to-Spring Persistence Rate | Female | Traditional | 64% | 67% | 67% | 71% | 71% | 71% | |
| | | Online | 65% | 66% | 72% | 72% | 71% | 70% | |
| | Male | Traditional | 61% | 67% | 68% | 69% | 70% | 69% | |
| | | Online | 66% | 69% | 75% | 71% | 75% | 73% | |
| | Gender Unknown | Traditional | 64% | 68% | 69% | 73% | 74% | 72% | |
| | | Online | 67% | 68% | 81% | 80% | 75% | 86% | |
| | Fall-to-Fall Persistence Rate | Female | Traditional | 47% | 50% | 49% | 51% | 53% | na |
| | | | Online | 47% | 49% | 52% | 50% | 50% | na |
| Male | | Traditional | 43% | 49% | 48% | 47% | 49% | na | |
| | | Online | 48% | 50% | 55% | 51% | 51% | na | |
| Gender Unknown | | Traditional | 50% | 54% | 49% | 52% | 46% | na | |
| | | Online | 57% | 48% | 59% | 60% | 67% | na | |
| Number of Unduplicated Students | | Female | Traditional | 5,104 | 5,403 | 5,890 | 5,230 | 4,841 | 4,535 |
| | | | Online | 753 | 797 | 1,010 | 900 | 854 | 969 |
| | Male | Traditional | 3,478 | 3,982 | 4,530 | 4,238 | 3,832 | 3,791 | |
| | | Online | 319 | 357 | 606 | 575 | 532 | 623 | |
| | Gender Unknown | Traditional | 222 | 238 | 242 | 172 | 125 | 99 | |
| | | Online | 21 | 25 | 27 | 25 | 12 | 14 | |
| | Number of Students Continuing to Spring | Female | Traditional | 3,262 | 3,627 | 3,937 | 3,711 | 3,436 | 3,203 |
| | | | Online | 491 | 527 | 732 | 648 | 605 | 679 |
| Male | | Traditional | 2,133 | 2,651 | 3,080 | 2,930 | 2,683 | 2,628 | |
| | | Online | 209 | 246 | 453 | 410 | 401 | 457 | |
| Gender Unknown | | Traditional | 143 | 163 | 166 | 126 | 92 | 71 | |
| | | Online | 14 | 17 | 22 | 20 | 9 | 12 | |
| Number of Students Continuing to Fall | | Female | Traditional | 2,400 | 2,692 | 2,858 | 2,658 | 2,552 | na |
| | | | Online | 355 | 389 | 523 | 448 | 429 | na |
| | Male | Traditional | 1,512 | 1,946 | 2,168 | 1,996 | 1,888 | na | |
| | | Online | 152 | 177 | 332 | 293 | 269 | na | |
| | Gender Unknown | Traditional | 112 | 128 | 119 | 89 | 57 | na | |
| | | Online | 12 | 12 | 16 | 15 | 8 | na | |

See Addendum A for data and group definitions.

na = Not available.

Source: District Research. Based on information from Datatel Colleague. 7/30/2013 JD

Los Medanos College including Brentwood Center
Level 3 Accreditation Tables - Aggregated by Measure, Demographic Group and Instruction Method

| | | PERSISTENCE BY AGE GROUP | | | | | | | |
|------------------------------|----------------------------|---------------------------------|---------------|---------------|---------------|---------------|---------------|---------------|-------|
| PERSISTENCE | AGE_GROUP | Instr. Method | 2007FA | 2008FA | 2009FA | 2010FA | 2011FA | 2012FA | |
| Fall-to-Spring Persistence R | < 20 years old | Traditional | 70% | 73% | 73% | 77% | 77% | 78% | |
| | | Online | 80% | 79% | 81% | 82% | 79% | 85% | |
| | 20 to 24 years old | Traditional | 65% | 66% | 67% | 68% | 69% | 69% | |
| | | Online | 68% | 69% | 75% | 71% | 74% | 72% | |
| | 25 to 49 years old | Traditional | 57% | 62% | 63% | 66% | 66% | 63% | |
| | | Online | 57% | 58% | 67% | 65% | 68% | 63% | |
| | 50 + years old | Traditional | 54% | 57% | 55% | 66% | 65% | 61% | |
| | | Online | 47% | 45% | 59% | 65% | 65% | 61% | |
| | Age unknown | Traditional | 20% | 0% | 20% | 0% | | | |
| | Fall-to-Fall Persistence R | < 20 years old | Traditional | 55% | 59% | 58% | 59% | 62% | na |
| | | | Online | 64% | 64% | 61% | 62% | 61% | na |
| | | 20 to 24 years old | Traditional | 44% | 45% | 47% | 45% | 45% | na |
| | | | Online | 45% | 44% | 53% | 46% | 49% | na |
| | | 25 to 49 years old | Traditional | 39% | 45% | 41% | 44% | 46% | na |
| Online | | | 43% | 44% | 46% | 47% | 45% | na | |
| 50 + years old | | Traditional | 37% | 38% | 34% | 40% | 49% | na | |
| | | Online | 28% | 33% | 49% | 40% | 50% | na | |
| Age unknown | | Traditional | 0% | 0% | 20% | 0% | | na | |
| Number of Unduplicated R | | < 20 years old | Traditional | 2,922 | 3,428 | 3,731 | 3,218 | 2,926 | 2,817 |
| | | | Online | 273 | 335 | 560 | 410 | 349 | 365 |
| | | 20 to 24 years old | Traditional | 2,337 | 2,557 | 2,966 | 3,082 | 2,960 | 2,902 |
| | | | Online | 322 | 360 | 459 | 487 | 464 | 596 |
| | | 25 to 49 years old | Traditional | 3,016 | 3,122 | 3,415 | 2,923 | 2,535 | 2,360 |
| | Online | | 419 | 424 | 548 | 510 | 491 | 556 | |
| | 50 + years old | Traditional | 524 | 513 | 540 | 414 | 377 | 346 | |
| | | Online | 79 | 60 | 76 | 93 | 94 | 89 | |
| | Age unknown | Traditional | 5 | 3 | 10 | 3 | | | |
| | Number of Students Cont | < 20 years old | Traditional | 2,034 | 2,518 | 2,736 | 2,464 | 2,261 | 2,206 |
| | | | Online | 218 | 265 | 452 | 337 | 277 | 312 |
| | | 20 to 24 years old | Traditional | 1,512 | 1,686 | 1,984 | 2,111 | 2,037 | 1,990 |
| | | | Online | 219 | 250 | 344 | 348 | 342 | 432 |
| | | 25 to 49 years old | Traditional | 1,708 | 1,945 | 2,162 | 1,919 | 1,669 | 1,495 |
| Online | | | 240 | 248 | 366 | 333 | 335 | 350 | |
| 50 + years old | | Traditional | 283 | 292 | 299 | 273 | 244 | 211 | |
| | | Online | 37 | 27 | 45 | 60 | 61 | 54 | |
| Age unknown | | Traditional | 1 | - | 2 | - | | | |
| Number of Students Cont | | < 20 years old | Traditional | 1,609 | 2,026 | 2,157 | 1,914 | 1,805 | na |
| | | | Online | 174 | 216 | 342 | 256 | 213 | na |
| | | 20 to 24 years old | Traditional | 1,039 | 1,148 | 1,387 | 1,384 | 1,332 | na |
| | | | Online | 144 | 157 | 241 | 222 | 226 | na |
| | | 25 to 49 years old | Traditional | 1,182 | 1,399 | 1,413 | 1,281 | 1,176 | na |
| | Online | | 179 | 185 | 251 | 241 | 220 | na | |
| | 50 + years old | Traditional | 194 | 193 | 186 | 164 | 184 | na | |
| | | Online | 22 | 20 | 37 | 37 | 47 | na | |
| | Age unknown | Traditional | - | - | 2 | - | | na | |

See Addendum A for data and group definitions.

na = Not available.

Source: District Research. Based on information from Datatel Colleague. 7/30/2013 JD

Los Medanos College including Brentwood Center
Level 3 Accreditation Tables - Aggregated by Measure, Demographic Group and Instruction Method

| PERSISTENCE BY RACE/ETHNICITY | | | | | | | | | |
|--|--|----------------------|---------------|---------------|---------------|---------------|---------------|---------------|-------|
| PERSISTENCE | RACE/ETHNICITY | Instr. Method | 2007FA | 2008FA | 2009FA | 2010FA | 2011FA | 2012FA | |
| Fall-to-Spring Persistence Rate | African American | Traditional | 56% | 60% | 61% | 61% | 62% | 63% | |
| | | Online | 54% | 61% | 66% | 65% | 61% | 66% | |
| | Asian | Traditional | 66% | 71% | 73% | 72% | 74% | 76% | |
| | | Online | 75% | 68% | 73% | 79% | 69% | 84% | |
| | Hispanic | Traditional | 64% | 69% | 68% | 72% | 73% | 71% | |
| | | Online | 70% | 71% | 80% | 75% | 77% | 77% | |
| | White | Traditional | 64% | 67% | 68% | 71% | 71% | 70% | |
| | | Online | 63% | 66% | 71% | 69% | 74% | 68% | |
| | Other/Undeclared | Traditional | 62% | 69% | 69% | 75% | 74% | 70% | |
| | | Online | 75% | 69% | 78% | 78% | 77% | 65% | |
| | Fall-to-Fall Persistence Rate | African American | Traditional | 42% | 44% | 42% | 40% | 42% | na |
| | | | Online | 37% | 51% | 49% | 43% | 40% | na |
| | | Asian | Traditional | 48% | 53% | 54% | 54% | 55% | na |
| | | | Online | 51% | 48% | 53% | 59% | 53% | na |
| Hispanic | | Traditional | 49% | 52% | 49% | 51% | 56% | na | |
| | | Online | 56% | 50% | 56% | 53% | 58% | na | |
| White | | Traditional | 45% | 50% | 48% | 49% | 50% | na | |
| | | Online | 45% | 51% | 52% | 47% | 50% | na | |
| Other/Undeclared | | Traditional | 45% | 49% | 51% | 54% | 51% | na | |
| | | Online | 52% | 40% | 57% | 58% | 45% | na | |
| Number of Unduplicated Students | | African American | Traditional | 1,305 | 1,613 | 1,798 | 1,627 | 1,443 | 1,298 |
| | | | Online | 171 | 188 | 295 | 251 | 241 | 292 |
| | | Asian | Traditional | 1,007 | 1,061 | 1,131 | 1,066 | 967 | 906 |
| | | | Online | 102 | 121 | 147 | 133 | 130 | 153 |
| | Hispanic | Traditional | 2,500 | 2,780 | 3,047 | 2,857 | 2,742 | 2,844 | |
| | | Online | 225 | 259 | 420 | 396 | 394 | 470 | |
| | White | Traditional | 3,254 | 3,358 | 3,418 | 2,942 | 2,615 | 2,416 | |
| | | Online | 487 | 480 | 569 | 535 | 478 | 508 | |
| | Other/Undeclared | Traditional | 738 | 811 | 1,268 | 1,148 | 1,031 | 961 | |
| | | Online | 108 | 131 | 212 | 185 | 155 | 183 | |
| | Number of Students Continuing to Spring | African American | Traditional | 730 | 965 | 1,099 | 985 | 899 | 817 |
| | | | Online | 93 | 114 | 195 | 163 | 147 | 192 |
| | | Asian | Traditional | 667 | 758 | 820 | 771 | 714 | 693 |
| | | | Online | 76 | 82 | 107 | 105 | 90 | 129 |
| Hispanic | | Traditional | 1,609 | 1,912 | 2,059 | 2,058 | 1,990 | 2,032 | |
| | | Online | 157 | 185 | 334 | 296 | 304 | 361 | |
| White | | Traditional | 2,071 | 2,246 | 2,327 | 2,089 | 1,846 | 1,685 | |
| | | Online | 307 | 319 | 406 | 370 | 355 | 347 | |
| Other/Undeclared | | Traditional | 461 | 560 | 878 | 864 | 762 | 675 | |
| | | Online | 81 | 90 | 165 | 144 | 119 | 119 | |
| Number of Students Continuing to Fall | | African American | Traditional | 549 | 716 | 756 | 656 | 611 | na |
| | | | Online | 64 | 95 | 144 | 108 | 97 | na |
| | | Asian | Traditional | 479 | 558 | 606 | 574 | 529 | na |
| | | | Online | 52 | 58 | 78 | 78 | 69 | na |
| | Hispanic | Traditional | 1,216 | 1,433 | 1,499 | 1,467 | 1,530 | na | |
| | | Online | 126 | 130 | 234 | 208 | 229 | na | |
| | White | Traditional | 1,449 | 1,664 | 1,634 | 1,431 | 1,303 | na | |
| | | Online | 221 | 243 | 295 | 254 | 241 | na | |
| | Other/Undeclared | Traditional | 331 | 395 | 650 | 615 | 524 | na | |
| | | Online | 56 | 52 | 120 | 108 | 70 | na | |

See Addendum A for data and group definitions.

na = Not available.

Source: District Research. Based on information from Datatel Colleague. 7/30/2013 JD

Los Medanos College including Brentwood Center
Level 3 Accreditation Tables - Aggregated by Measure, Demographic Group and Instruction Method

| AWARDS BY GENDER | | | | | | | |
|---------------------------------|--------------------|---------|---------|---------|---------|---------|---------|
| AWARDS | GENDER | 2007-08 | 2008-09 | 2009-10 | 2010-11 | 2011-12 | 2012-13 |
| Less than 1-year | Female | 220 | 176 | 144 | 162 | 188 | 231 |
| | Male | 163 | 160 | 89 | 209 | 270 | 263 |
| | Gender Unknown | 5 | 5 | 10 | 8 | 7 | 3 |
| At least 1 but less than 2- | Female | 12 | 27 | 8 | 45 | 43 | 21 |
| | Male | 11 | 14 | 30 | 47 | 49 | 63 |
| | Gender Unknown | 1 | 1 | 2 | 2 | 1 | |
| Associates degree | Female | 263 | 315 | 244 | 413 | 443 | 463 |
| | Male | 122 | 117 | 110 | 161 | 180 | 225 |
| | Gender Unknown | 6 | 20 | 7 | 20 | 11 | 11 |
| AWARDS BY AGE GROUP | | | | | | | |
| AWARDS | AGE_GROUP | 2007-08 | 2008-09 | 2009-10 | 2010-11 | 2011-12 | 2012-13 |
| Less than 1-year | < 20 years old | 31 | 35 | 11 | 46 | 46 | 53 |
| | 20 to 24 years old | 97 | 98 | 53 | 140 | 183 | 188 |
| | 25 to 49 years old | 217 | 184 | 155 | 168 | 211 | 215 |
| | 50 + years old | 43 | 24 | 24 | 25 | 25 | 41 |
| At least 1 but less than 2- | < 20 years old | | 1 | | 1 | 1 | 1 |
| | 20 to 24 years old | 3 | 9 | 10 | 15 | 28 | 12 |
| | 25 to 49 years old | 17 | 28 | 24 | 68 | 58 | 57 |
| | 50 + years old | 4 | 4 | 6 | 10 | 6 | 14 |
| Associates degree | < 20 years old | 28 | 23 | 17 | 25 | 10 | 25 |
| | 20 to 24 years old | 200 | 235 | 174 | 343 | 347 | 426 |
| | 25 to 49 years old | 148 | 182 | 154 | 209 | 256 | 232 |
| | 50 + years old | 15 | 12 | 16 | 17 | 21 | 16 |
| AWARDS BY RACE/ETHNICITY | | | | | | | |
| AWARDS | RACE/ETHNICITY | 2007-08 | 2008-09 | 2009-10 | 2010-11 | 2011-12 | 2012-13 |
| Less than 1-year | African American | 37 | 50 | 42 | 39 | 49 | 48 |
| | Asian | 31 | 31 | 18 | 36 | 32 | 42 |
| | Hispanic | 106 | 88 | 75 | 109 | 136 | 155 |
| | White | 185 | 147 | 84 | 163 | 212 | 206 |
| | Other/Undeclared | 29 | 25 | 24 | 32 | 36 | 46 |
| At least 1 but less than 2- | African American | 3 | 11 | 4 | 11 | 6 | 9 |
| | Asian | 5 | 4 | 3 | 19 | 17 | 11 |
| | Hispanic | 8 | 10 | 8 | 14 | 26 | 28 |
| | White | 6 | 16 | 23 | 42 | 33 | 29 |
| | Other/Undeclared | 2 | 1 | 2 | 8 | 11 | 7 |
| Associates degree | African American | 34 | 57 | 44 | 74 | 80 | 95 |
| | Asian | 71 | 53 | 40 | 66 | 61 | 71 |
| | Hispanic | 101 | 134 | 96 | 188 | 225 | 237 |
| | White | 148 | 178 | 142 | 218 | 209 | 196 |
| | Other/Undeclared | 37 | 30 | 39 | 48 | 59 | 100 |

See Addendum A for data and group definitions.

na = Not available.

Source: District Research. Based on information from Datatel Colleague. 7/30/2013 JD

Operational Definitions

Course Success Rate

Definition: Percentage of students who receive a passing/satisfactory grade.

Numerator: A, B, C, CR, IA, IB, IC, IP, P

Denominator: A, B, C, CR, D, F, IA, IB, IC, ID, IF, IN, P, NC, NP, P, W

Excluded grade notations: MW, RD

Course Retention Rate

Definition: Percentage of students who do not withdraw from class and who receive a valid grade.

Numerator: A, B, C, CR, D, F, I*, NC, NP, P, RD

Denominator: A, B, C, CR, D, F, I*, NC, NP, P, RD, W

Excluded grade notations: MW

Persistence Rate

Definition: Percentage of students who are enrolled as of census for an initial and a subsequent term.

Numerator: The number of students who receive a grade of A, B, C, D, F, FW, I*, P/CR, NP/NC, RD, or W in at least one class in the subsequent primary term.

Denominator: The number of students who receive a grade of A, B, C, D, F, FW, I*, P/CR, NP/NC, RD, W in at least one class in the initial primary term.

Note: Persistence is commonly calculated for two adjacent terms, e.g., Fall 2010 to Spring 2011. This is called “term-to-term” persistence. An annual persistence rate is also popular, e.g., Fall 2010 to Fall 2011. Summer session terms are ignored. Both term-to-term and annual rates are provided for your college.

*Includes IA, IB, IC, ID, IF, IN, and IP

Group Definitions

Basic Skills

CCCCO Data Element CB08. Course Basic Skills Status = B, meaning the course is coded as a basic skills course. In Colleague, COURSE_TYPE = B. All other CB08 notations are excluded.

Career and Technical Education (CTE)

CCCCO Data Element CB09. Course Sam Priority Code is A=Apprenticeship, or B=Advanced Occupational, or C=Clearly Occupational. In Colleague, COURSE_LEVEL = A or B or C. All other CB09 notations are excluded.

Degree Applicable

CCCCO Data Element CB04. Course Credit Status = D, meaning the course is coded as credit degree applicable. In Colleague, CREDIT_TYPE = D. All other CB04 notations are excluded.

Instruction Method

Online: CCCCCO Data Element XF01. Session Instruction Method = 71 or 72, meaning the course is coded as internet-based distance education. In Colleague, CSM_INSTR_METHOD = 71 or 72 or 71L or 72L or the classroom is coded CSM_ROOM = ONLINE. All other CB04 notations are counted in the “traditional” category.

Traditional: CCCCCO Data Element XF01. Session Instruction Method. This category includes lecture 02, lab 04, tutoring 11, work experience 20, independent study 40, field experience 90, and all other distance education methods that are not internet based. Session instruction methods 71 or 72 are excluded from this category.

Group Definitions (continued)

Award Groups

CCCCO Data Element SP02. Student Program Award.

Associate Degree = notations A or S, Associate of Arts (A.A.) degree or Associate of Science (A.S.) degree;

Less than 1-year certificate = notations E or B or L or O, certificates ranging 6 to fewer than 30 units;

At least 1 year but less than 4-year certificate = notations T or F, certificates ranging from 30 to 60+ units;

Noncredit awards are excluded.

Race/Ethnicity Groups

Asian includes, Asian, Filipino and Pacific Islander.

Other/Undeclared includes American Indian, multi-ethnicity, and unknown.

Designations of African American, Hispanic, and white have not been grouped.

For complete definitions of all data elements listed above, go to the California Community Colleges, Chancellor's Office (CCCCO) Data Element Dictionary at:

<http://extranet.cccco.edu/Divisions/TechResearchInfoSys/MIS/DED.aspx>