



Contra Costa Community College District

# **ACCREDITATION INFORMATION FOR BRENTWOOD CENTER**

August 2013

District Research  
Contra Costa Community College District  
500 Court Street  
Martinez, California 94553

# TABLE OF CONTENTS

LEVEL 1 ACCREDITATION TABLES – AGGREGATED BY MEASURE AND INSTRUCTION METHOD .....	1
All Courses .....	2
Basic Skills Courses .....	2
Career and Technical Education (CTE) Courses .....	3
Degree Applicable Courses .....	3
Awards .....	3
FIGURES.....	4
Course Success Rate by Type of Course and Instruction Method.....	5
Course Success Rate by Demographic Group.....	6
Basic Skills Course Success Rate by Demographic Group.....	7
Career and Technical Education (CTE) Course Success Rate by Demographic Group .....	8
Degree Applicable Course Success Rate by Demographic Group .....	9
Persistence Rates by Type of Course.....	10
Fall-to-Spring Persistence Rate for All Courses by Demographic Group.....	11
Fall-to-Fall Persistence Rate for All Courses by Demographic Group .....	12
Number of Awards by Year by Demographic Group (See LMC Report Pg. 13)	
LEVEL 2 ACCREDITATION TABLES – AGGREGATED BY MEASURE AND DEMOGRAPHIC GROUP .....	13
All Courses by Gender .....	14
All Courses by Age Group .....	14
All Courses by Race/Ethnicity .....	15
Basic Skills Courses by Gender .....	16
Basic Skills Courses by Age Group .....	16
Basic Skills Courses by Race/Ethnicity .....	17
Career and Technical Education (CTE) Courses by Gender .....	18
Career and Technical Education (CTE) Courses by Age Group .....	18
Career and Technical Education (CTE) Courses by Race/Ethnicity.....	19
Degree Applicable Courses by Gender .....	20
Degree Applicable Courses by Age Group.....	20
Degree Applicable Courses by Race/Ethnicity.....	21

Persistence by Gender.....	22
Persistence by Age Group .....	22
Persistence by Race/Ethnicity .....	23
Awards by Gender (See LMC Report Pg. 25)	
Awards by Age Group (See LMC Report Pg. 25)	
Awards by Race/Ethnicity (See LMC Report Pg. 25)	

LEVEL 3 ACCREDITATION TABLES – AGGREGATED BY MEASURE, DEMOGRAPHIC GROUP AND INSTRUCTION METHOD .....	24
All Courses by Gender and Instruction Method.....	25
All Courses by Age Group and Instruction Method.....	26
All Courses by Race/Ethnicity and Instruction Method.....	27
Basic Skills Courses by Gender and Instruction Method.....	28
Basic Skills Courses by Age Group and Instruction Method.....	28
Basic Skills Courses by Race/Ethnicity and Instruction Method.....	29
Career and Technical Education (CTE) Courses by Gender and Instruction Method.....	30
Career and Technical Education (CTE) Courses by Age Group and Instruction Method.....	30
Career and Technical Education (CTE) Courses by Race/Ethnicity and Instruction Method .....	31
Degree Applicable Courses by Gender and Instruction Method.....	32
Degree Applicable Courses by Age Group and Instruction Method .....	33
Degree Applicable Courses by Race/Ethnicity and Instruction Method .....	34
Persistence by Gender and Instruction Method .....	35
Persistence by Age Group and Instruction Method .....	36
Persistence by Race/Ethnicity and Instruction Method.....	37
Awards by Gender and Type of Award (See LMC Report Pg. 42)	
Awards by Age Group and Type of Award (See LMC Report Pg. 42)	
Awards by Race/Ethnicity and Type of Award (See LMC Report Pg. 42)	
APPENDIX A – Operational Definitions .....	38

# LEVEL 1 ACCREDITATION TABLES – AGGREGATED BY MEASURE AND INSTRUCTION METHOD

---

Information in this section:

- Success Rate by Traditional and Online Instruction Methods for All Courses, Basic Skill Courses, CTE Courses and Degree Applicable Courses
- Retention Rate by Traditional and Online Instruction Methods for All Courses, Basic Skill Courses, CTE Courses and Degree Applicable Courses
- Fall-to-Spring Persistence Rate by Traditional and Online Instruction Methods for All Courses, Basic Skill Courses, CTE Courses and Degree Applicable Courses
- Fall-to-Fall Persistence Rate by Traditional and Online Instruction Methods for All Courses, Basic Skill Courses, CTE Courses and Degree Applicable Courses
- Total Success Rate for All Courses, Basic Skill Courses, CTE Courses and Degree Applicable Courses
- Total Retention Rate for All Courses, Basic Skill Courses, CTE Courses and Degree Applicable Courses
- Total Fall-to-Spring Persistence Rate for All Courses, Basic Skill Courses, CTE Courses and Degree Applicable Courses
- Total Fall-to-Fall Persistence Rate for All Courses, Basic Skill Courses, CTE Courses and Degree Applicable Courses
- Awards by Type (See College Report)
- Total Awards (See College Report)

**Brentwood Center**  
**Level 1 Accrediation Tables - Aggregated by Measure and Instruction Method**

<b>ALL COURSES</b>	Instr. Method	2007FA	2008FA	2009FA	2010FA	2011FA	2012FA
Success Rate	Traditional	69%	70%	69%	70%	75%	72%
	Online	72%	63%	62%	69%	84%	81%
Retention Rate	Traditional	84%	84%	82%	83%	87%	85%
	Online	80%	74%	76%	84%	90%	88%
Fall-to-Spring Persistence Rate	Traditional	67%	73%	74%	73%	75%	73%
	Online	61%	71%	72%	67%	76%	74%
Fall-to-Fall Persistence Rate	Traditional	50%	55%	54%	54%	54%	na
	Online	48%	57%	53%	48%	53%	na
Success Rate	Total	69%	70%	68%	70%	75%	72%
Retention Rate	Total	84%	84%	82%	83%	87%	85%
Fall-to-Spring Persistence Rate	Total	67%	73%	73%	72%	75%	73%
Fall-to-Fall Persistence Rate	Total	50%	55%	54%	54%	54%	na

<b>BASIC SKILLS COURSES</b>	Instr. Method	2007FA	2008FA	2009FA	2010FA	2011FA	2012FA
Success Rate	Traditional	66%	59%	67%	71%	71%	70%
	Online						
Retention Rate	Traditional	87%	74%	83%	83%	83%	84%
	Online						
Fall-to-Spring Persistence Rate	Traditional	68%	75%	71%	74%	69%	69%
	Online						
Fall-to-Fall Persistence Rate	Traditional	55%	61%	56%	50%	56%	na
	Online						na
Success Rate	Total	66%	59%	67%	71%	71%	70%
Retention Rate	Total	87%	74%	83%	83%	83%	84%
Fall-to-Spring Persistence Rate	Total	68%	75%	71%	74%	69%	69%
Fall-to-Fall Persistence Rate	Total	55%	61%	56%	50%	56%	na

See Addendum A for data and group definitions.

**Brentwood Center**  
**Level 1 Accrediation Tables - Aggregated by Measure and Instruction Method**

<b>CTE COURSES</b>	Instr. Method	2007FA	2008FA	2009FA	2010FA	2011FA	2012FA
Success Rate	Traditional	73%	71%	71%	74%	75%	78%
	Online						
Retention Rate	Traditional	89%	85%	84%	87%	89%	92%
	Online						
Fall-to-Spring Persistence Rate	Traditional	55%	67%	69%	63%	69%	66%
	Online						
Fall-to-Fall Persistence	Traditional	38%	49%	45%	47%	48%	na
	Online						na
Success Rate	Total	73%	71%	71%	74%	75%	78%
Retention Rate	Total	89%	85%	84%	87%	89%	92%
Fall-to-Spring Persistence Rate	Total	55%	67%	69%	63%	69%	66%
Fall-to-Fall Persistence Rate	Total	38%	49%	45%	47%	48%	na

<b>DEGREE APPL. COURSES</b>	Instr. Method	2007FA	2008FA	2009FA	2010FA	2011FA	2012FA
Success Rate	Traditional	69%	71%	69%	70%	75%	72%
	Online	72%	63%	62%	69%	84%	81%
Retention Rate	Traditional	83%	85%	82%	83%	87%	85%
	Online	80%	74%	76%	84%	90%	88%
Fall-to-Spring Persistence Rate	Traditional	68%	73%	75%	73%	76%	73%
	Online	61%	71%	72%	67%	76%	74%
Fall-to-Fall Persistence	Traditional	51%	55%	55%	55%	55%	na
	Online	48%	57%	53%	48%	53%	na
Success Rate	Total	69%	71%	69%	70%	75%	72%
Retention Rate	Total	83%	84%	82%	83%	87%	85%
Fall-to-Spring Persistence Rate	Total	67%	73%	74%	72%	76%	73%
Fall-to-Fall Persistence Rate	Total	51%	55%	54%	54%	55%	na

<b>AWARDS</b>	2007-08	2008-09	2009-10	2010-11	2011-12	2012-13
(See LMC)						

See Addendum A for data and group definitions.

Source: District Research. Based on information from Datatel Colleague. 7/30/2013 JD

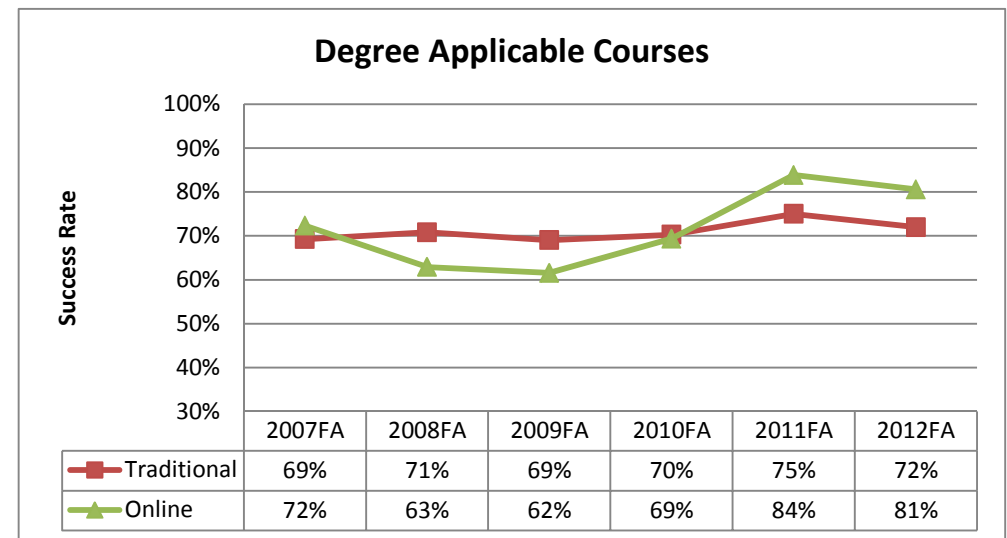
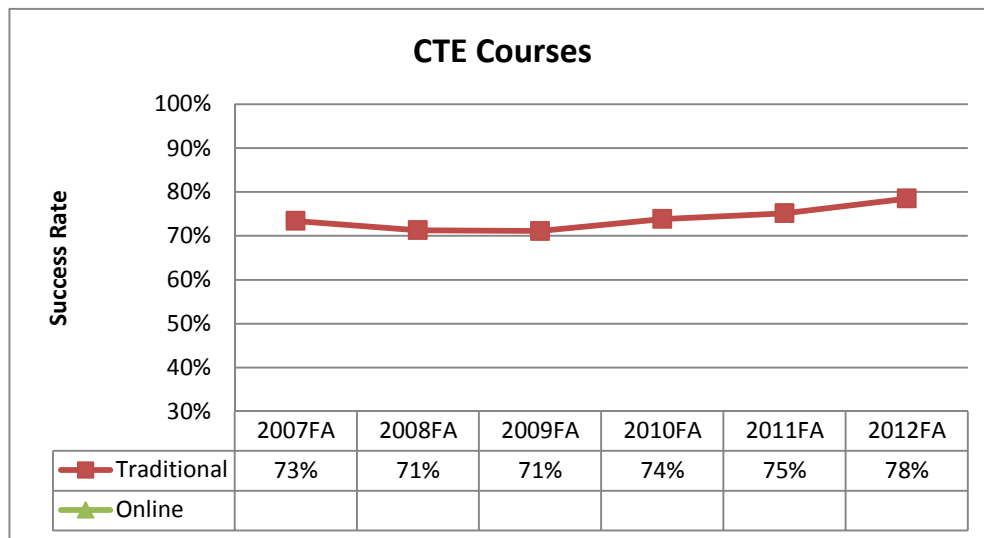
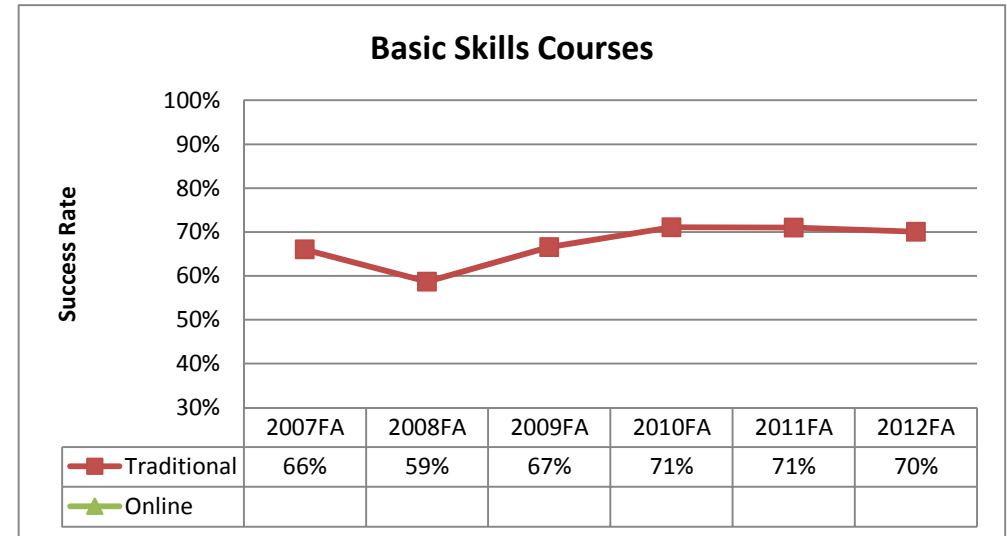
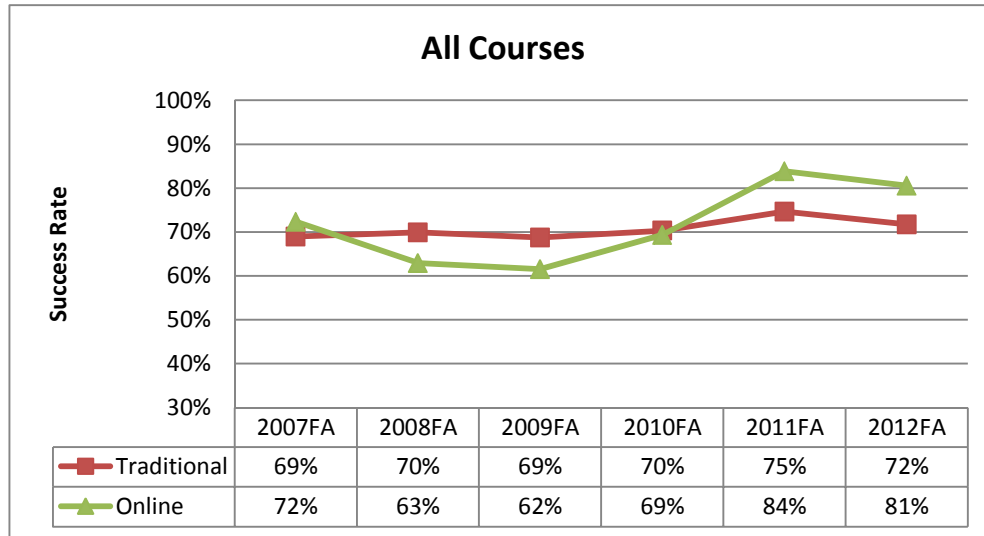
# FIGURES

---

Information in this section:

- Course Success Rate by Type of Course and Instruction Method
- Course Success Rate by Demographic Group
- Basic Skills Course Success Rate by Demographic Group
- Career and Technical Education (CTE) Course Success Rate by Demographic Group
- Degree Applicable Course Success Rate by Demographic Group
- Persistence Rates by Type of Course
- Fall-to-Spring Persistence Rate for All Courses by Demographic Group
- Fall-to-Fall Persistence Rate for All Courses by Demographic Group
- Number of Awards by Year by Demographic Group (See College Report)

## Brentwood Center Course Success Rate by Type of Course and Instruction Method



**Course Success Rate:** Percentage of students who receive a passing/satisfactory grade.

**Numerator:** A, B, C, CR, IA, IB, IC, IP, P

**Denominator:** A, B, C, CR, D, F, IA, IB, IC, ID, IF, IN, P, NC, NP, P, W

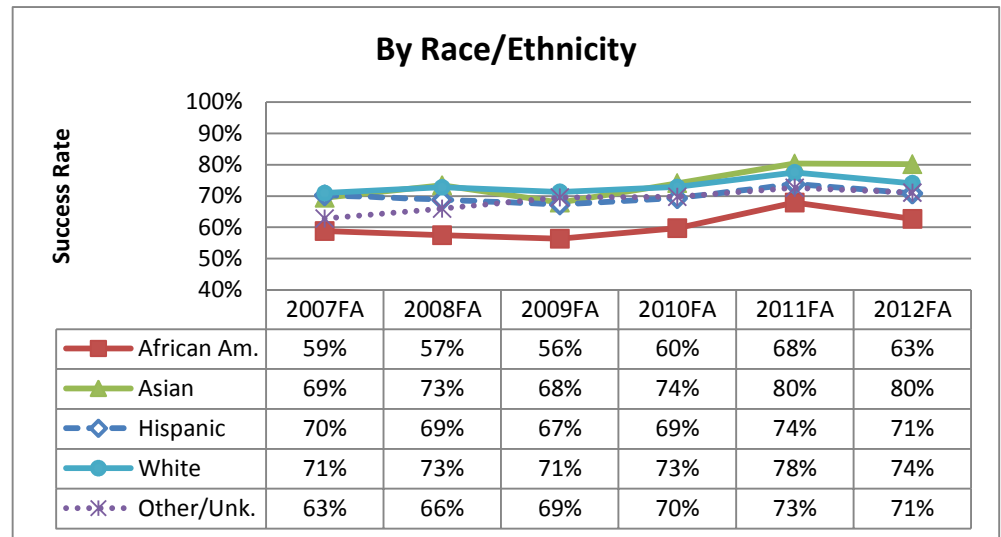
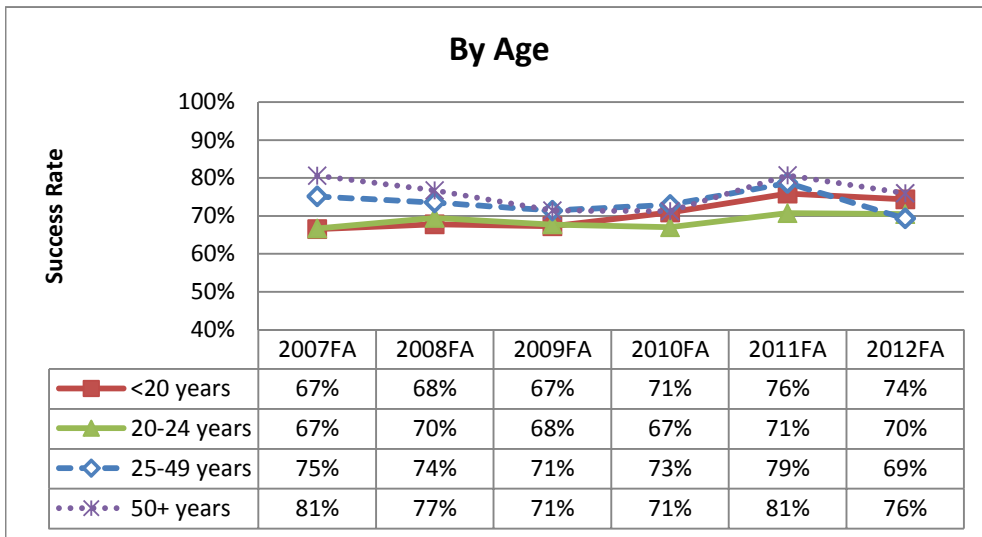
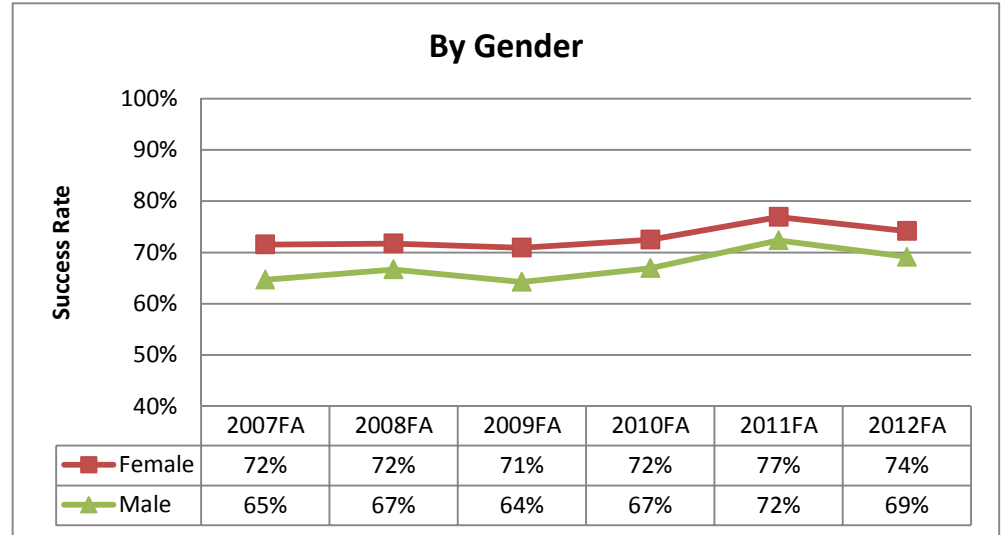
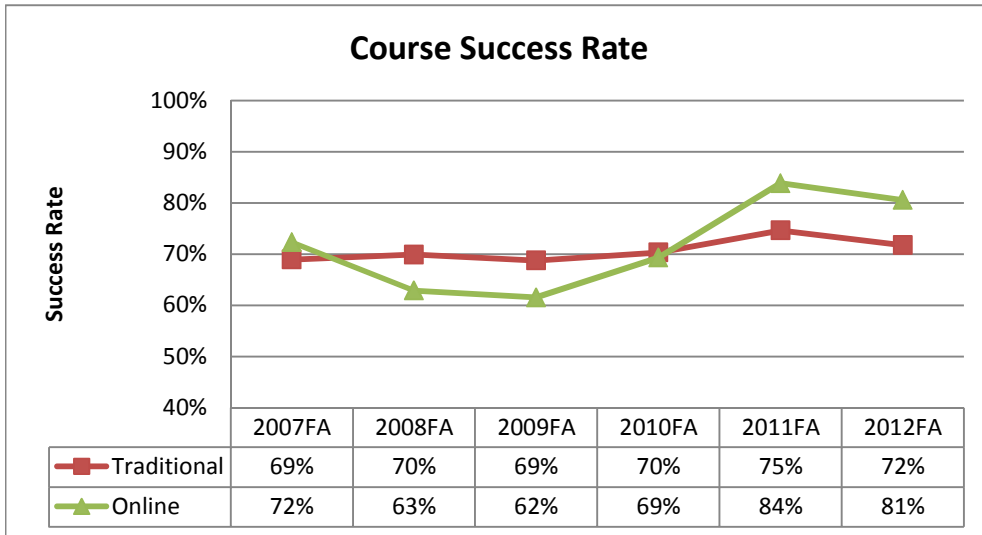
Excluded grade notations: MW, RD

See Addendum A for course and group definitions.

Source: District Research, CCCCD. Based on information from Colleague. Run date 7/30/2013 JD



## Brentwood Center Course Success Rate by Demographic Group



**Course Success Rate:** Percentage of students who receive a passing/satisfactory grade.

**Numerator:** A, B, C, CR, IA, IB, IC, IP, P

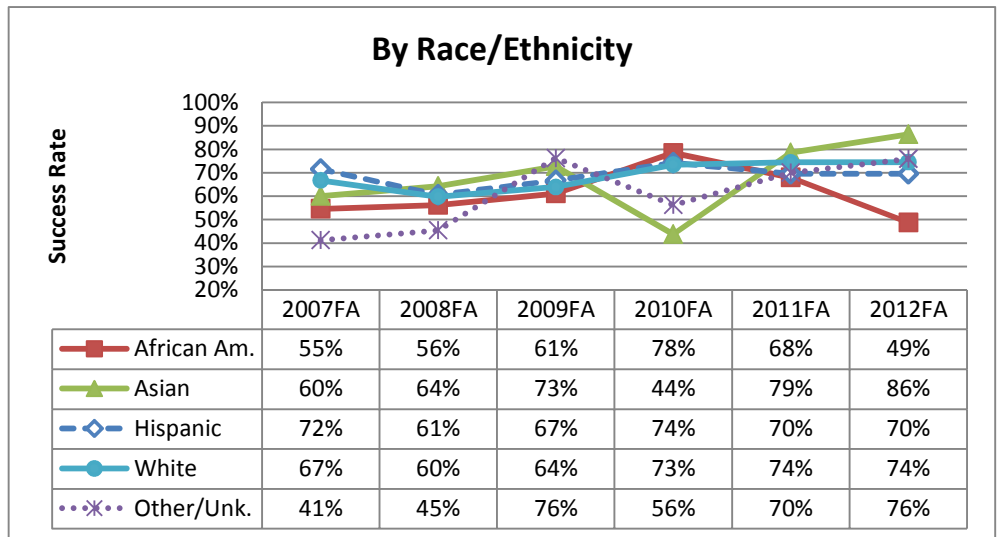
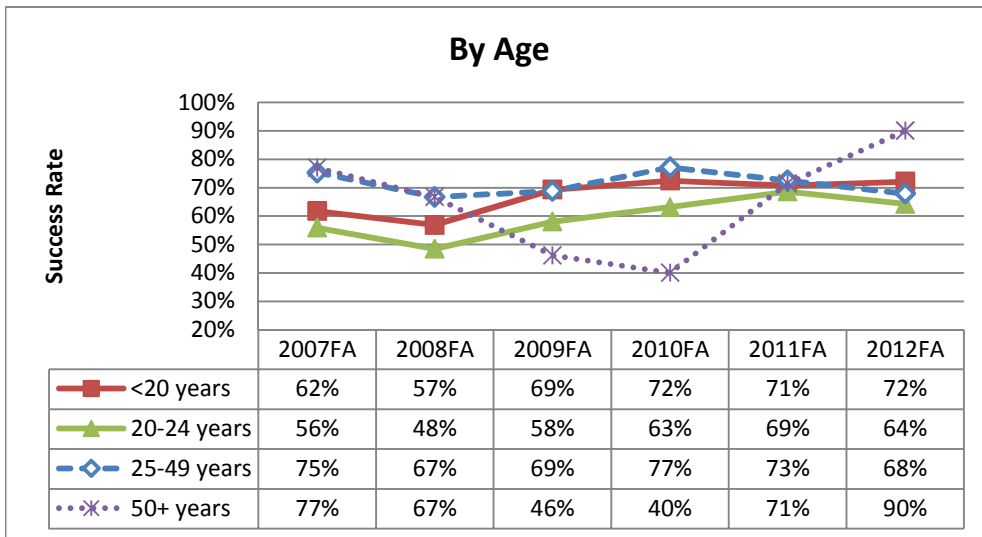
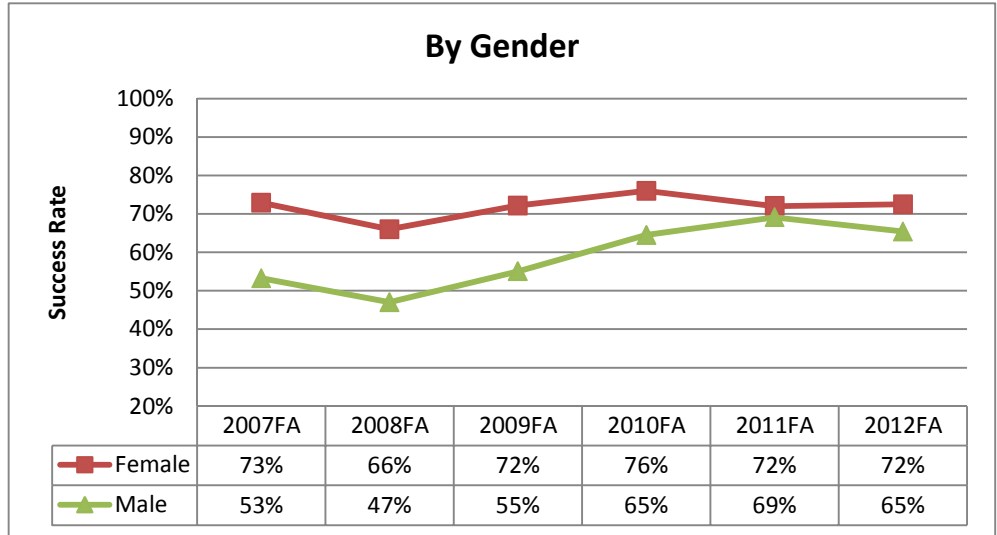
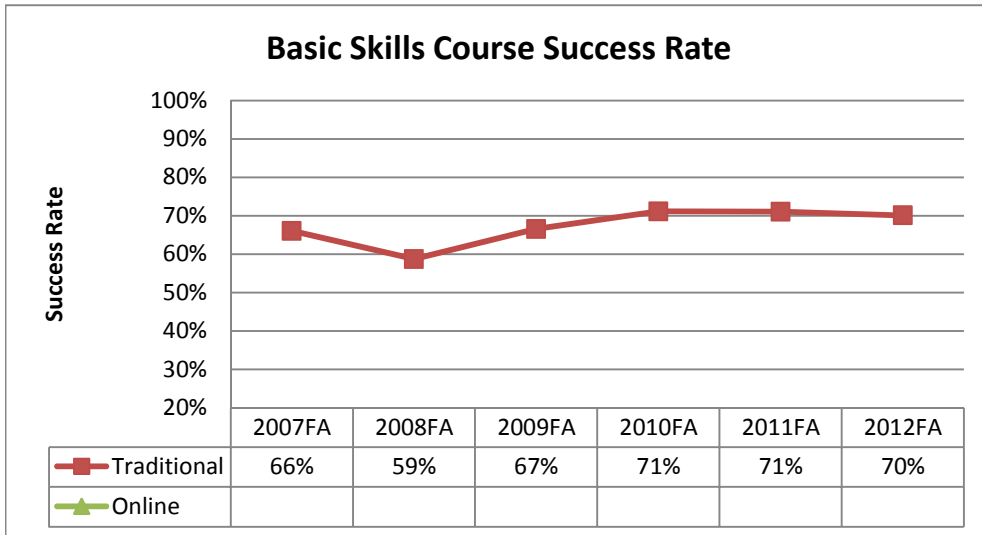
**Denominator:** A, B, C, CR, D, F, IA, IB, IC, ID, IF, IN, P, NC, NP, P, W

Excluded grade notations: MW, RD

See Addendum A for course and group definitions.

Source: District Research, CCCCD. Based on information from Colleague. Run date 7/30/2013 JD

## Brentwood Center Basic Skills Course Success Rate by Demographic Group



**Course Success Rate:** Percentage of students who receive a passing/satisfactory grade.

**Numerator:** A, B, C, CR, IA, IB, IC, IP, P

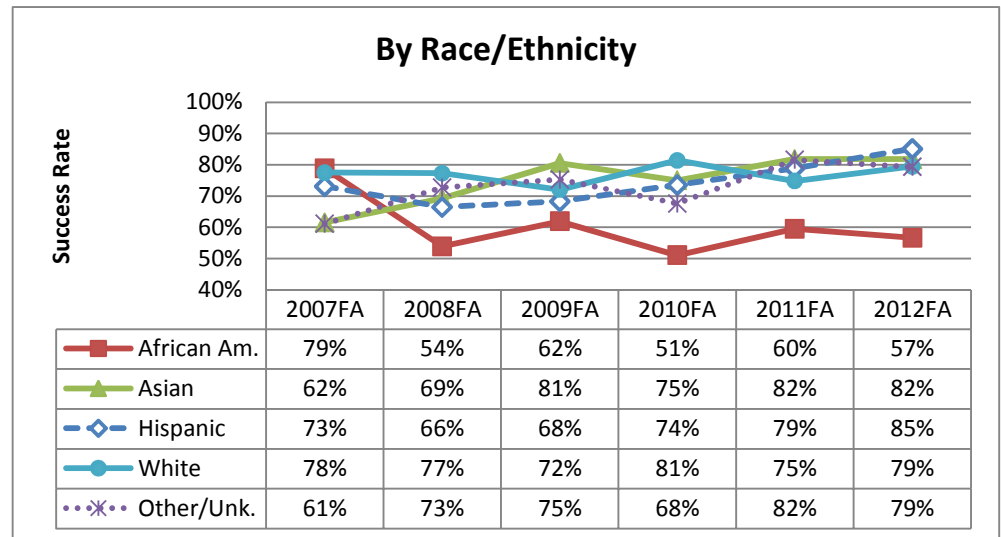
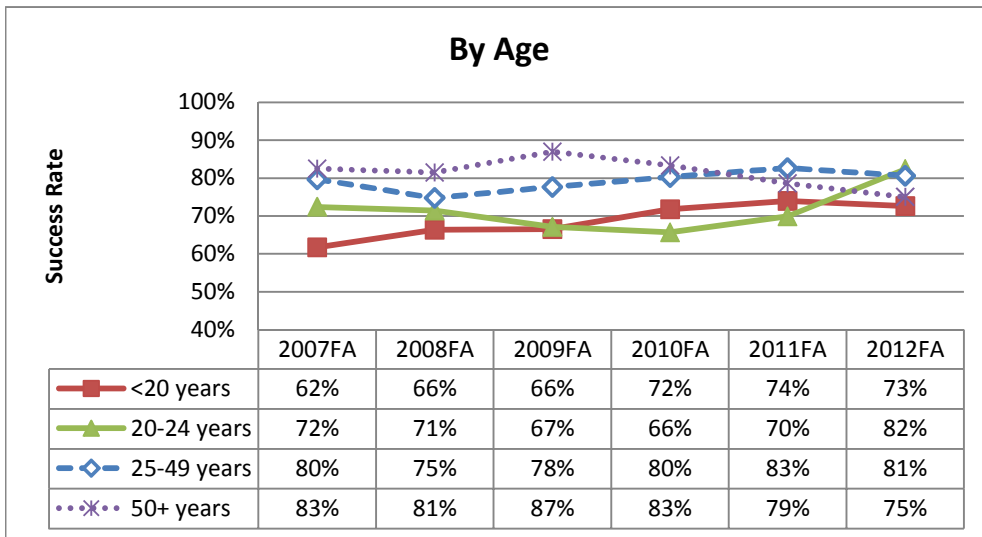
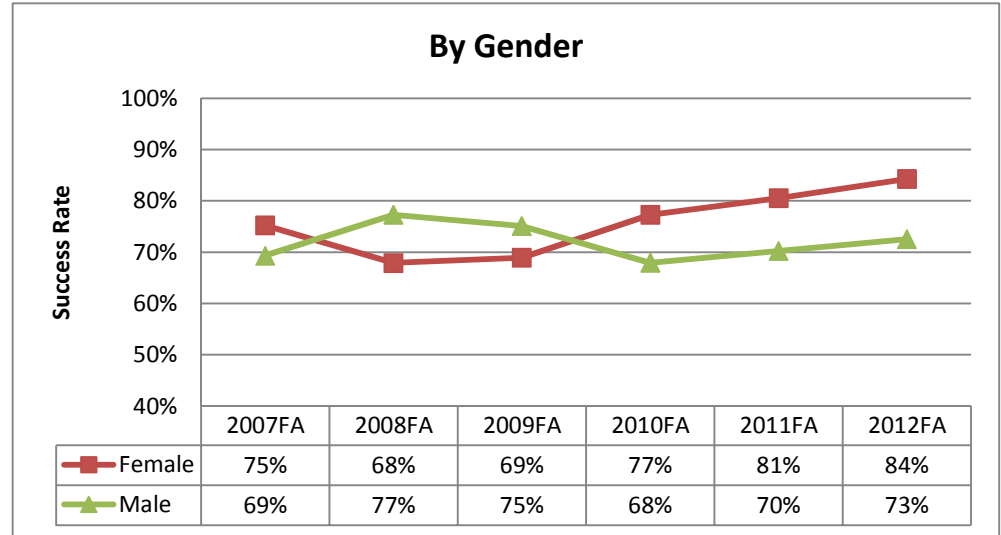
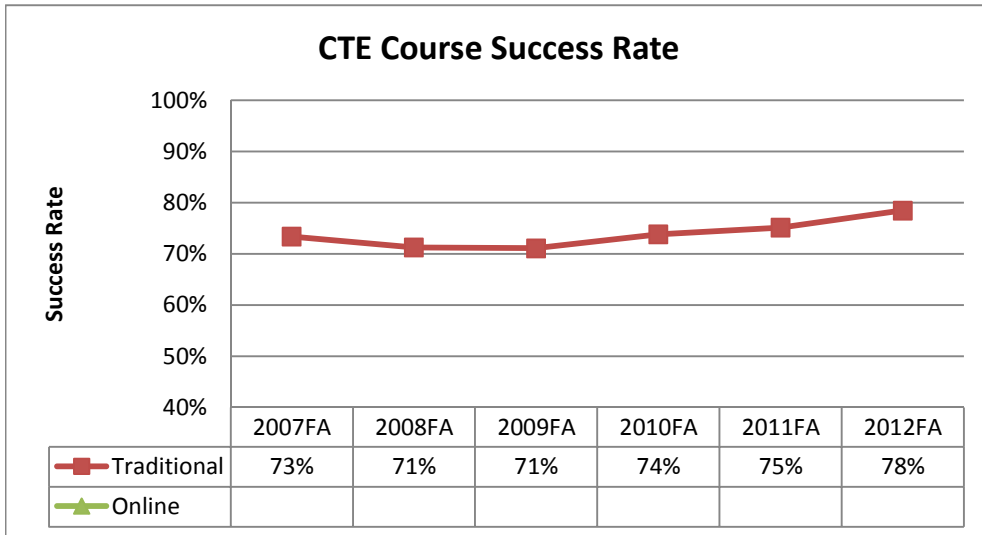
**Denominator:** A, B, C, CR, D, F, IA, IB, IC, ID, IF, IN, P, NC, NP, P, W

Excluded grade notations: MW, RD

See Addendum A for course and group definitions.

Source: District Research, CCCCD. Based on information from Colleague. Run date 7/30/2013 JD

## Brentwood Center Career and Technical Education (CTE) Course Success Rate by Demographic Group



**Course Success Rate:** Percentage of students who receive a passing/satisfactory grade.

**Numerator:** A, B, C, CR, IA, IB, IC, IP, P

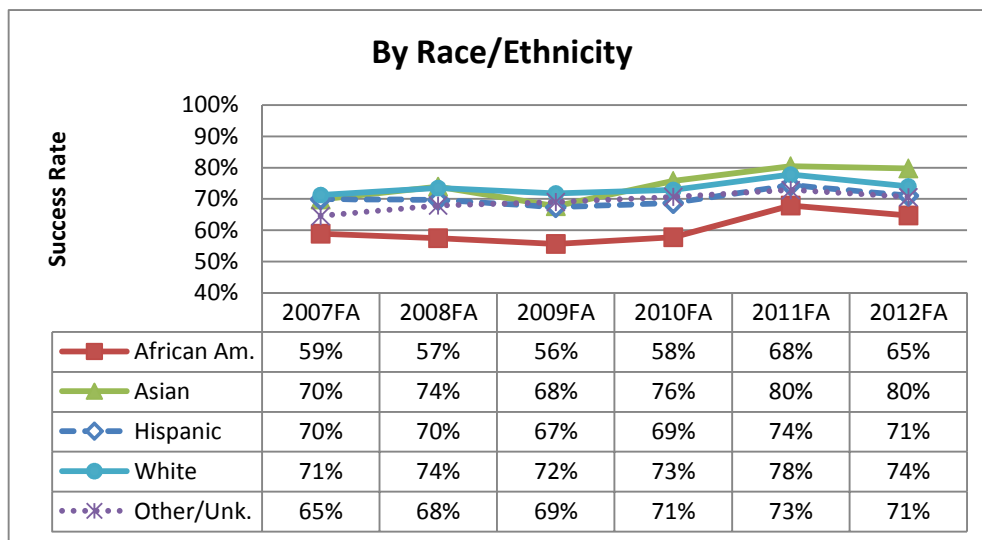
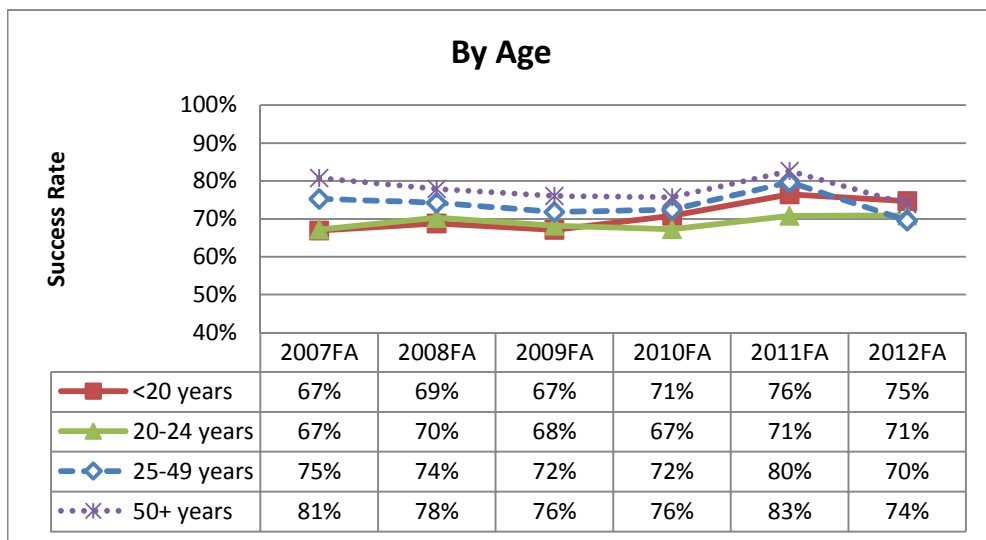
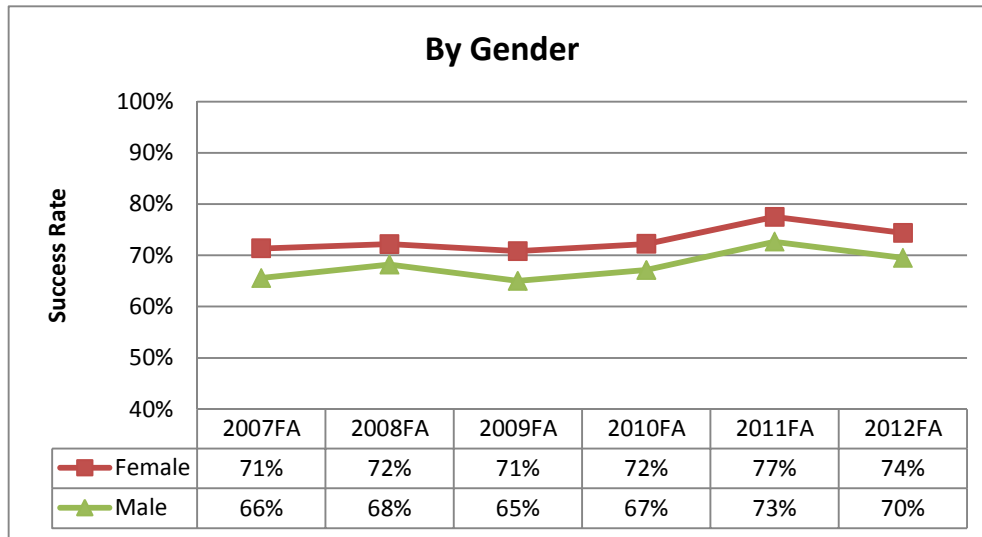
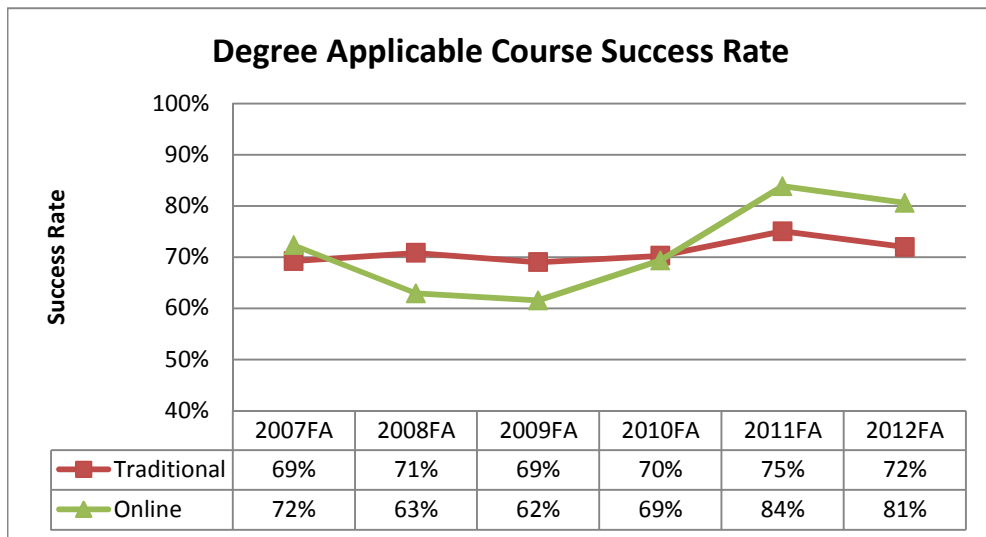
**Denominator:** A, B, C, CR, D, F, IA, IB, IC, ID, IF, IN, P, NC, NP, P, W

Excluded grade notations: MW, RD

See Addendum A for course and group definitions.

Source: District Research, CCCCD. Based on information from Colleague. Run date 7/30/2013 JD

## Brentwood Center Degree Applicable Course Success Rate by Demographic Group



**Course Success Rate:** Percentage of students who receive a passing/satisfactory grade.

**Numerator:** A, B, C, CR, IA, IB, IC, IP, P

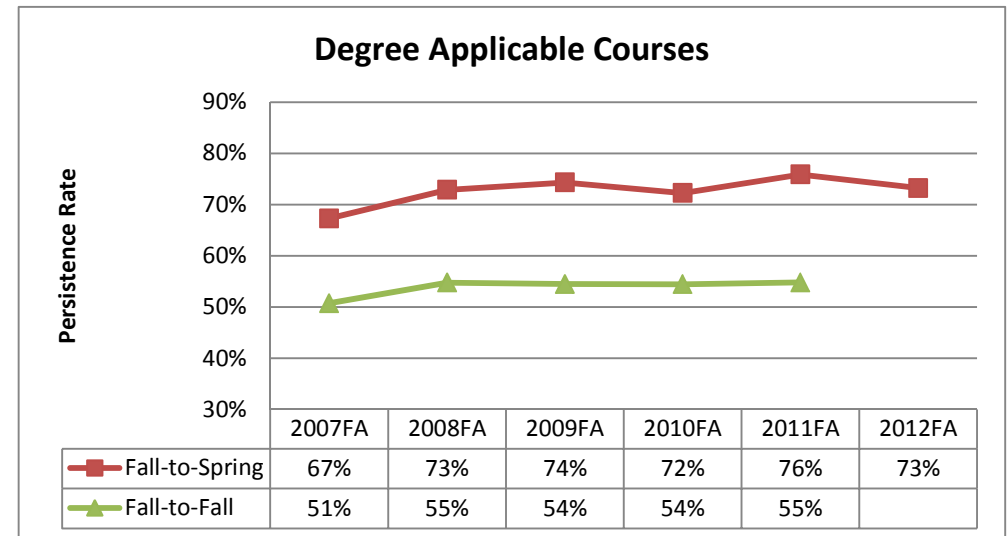
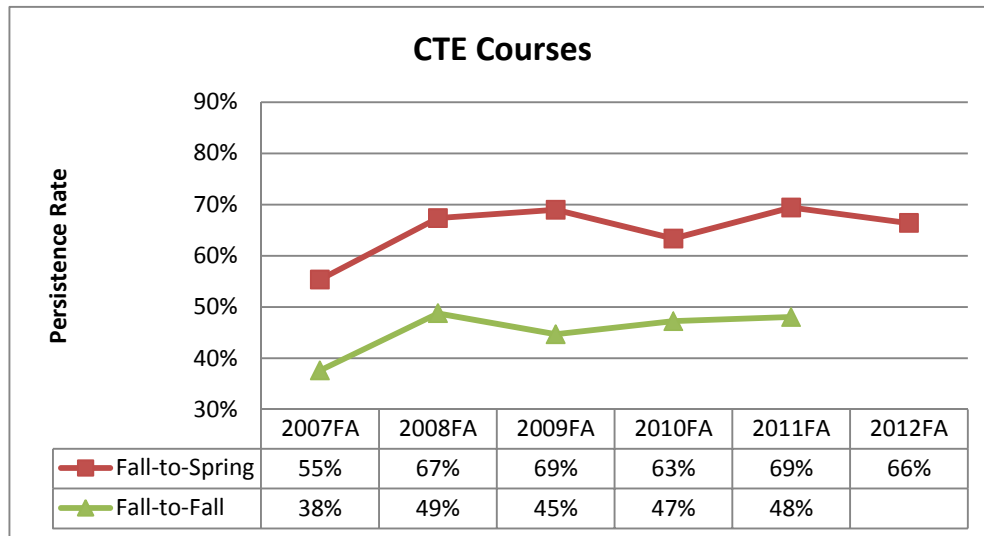
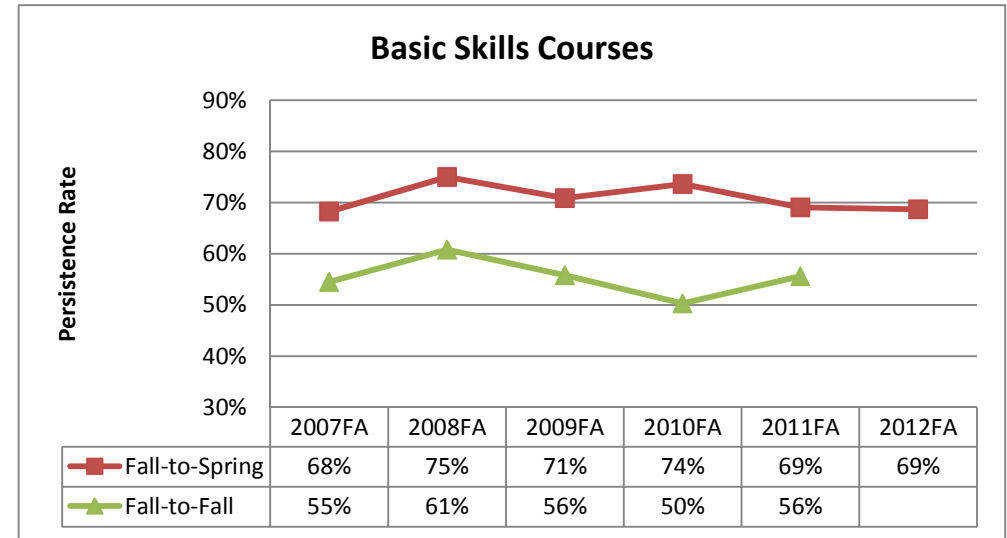
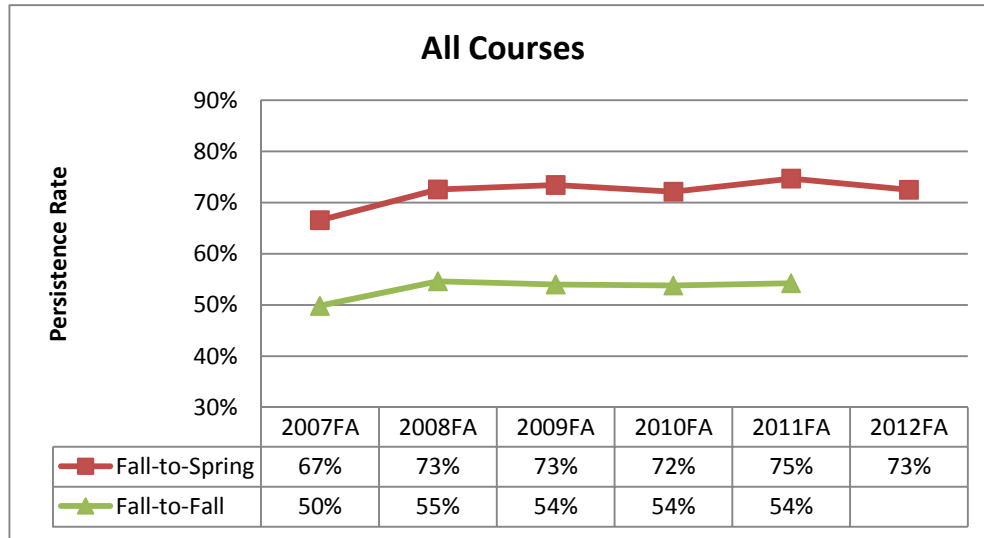
**Denominator:** A, B, C, CR, D, F, IA, IB, IC, ID, IF, IN, P, NC, NP, P, W

Excluded grade notations: MW, RD

See Addendum A for course and group definitions.

Source: District Research, CCCCD. Based on information from Colleague. Run date 7/30/2013 JD

## Brentwood Center Persistence Rates by Type of Course



**Persistence Rate:** Percentage of students who are enrolled as census for an initial and a subsequent term.

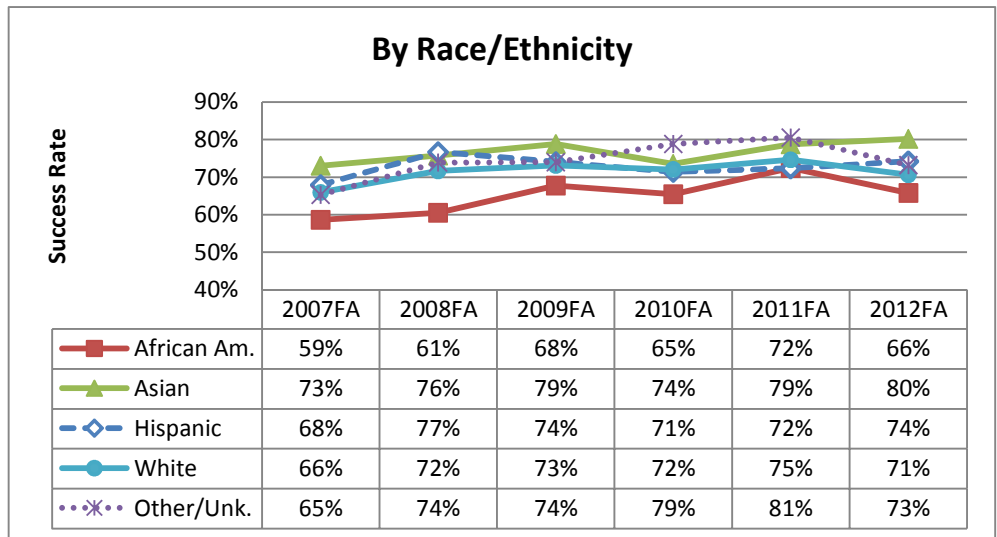
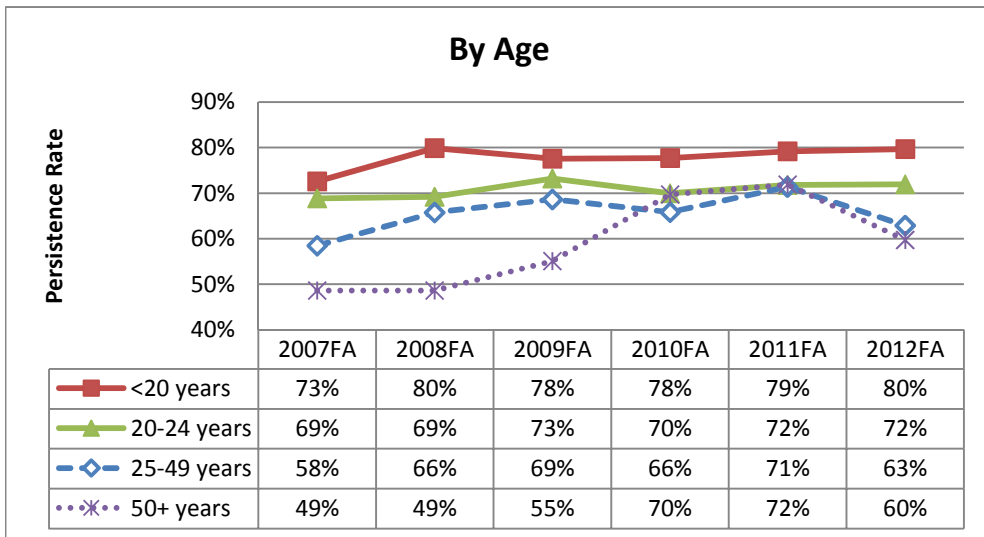
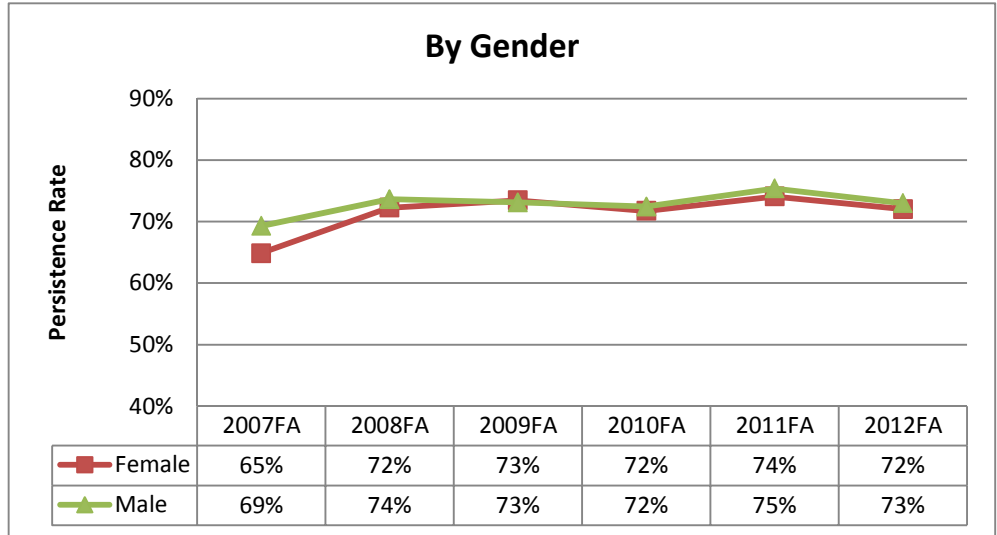
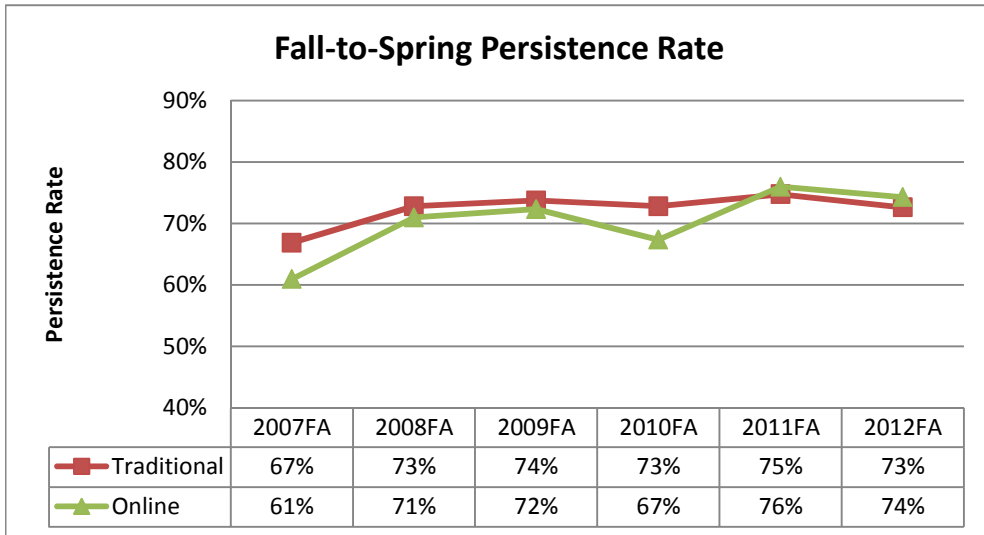
**Numerator:** The number of students who receive a grade of A, B, C, D, F, FW, I\*, P/CR, NP/NC, RD, or W in at least one class in the subsequent primary term.

**Denominator:** The number of students who receive a grade of A, B, C, D, F, FW, I\*, P/CR, NP/NC, RD, W in at least one class in the initial primary term.

See Addendum A for course and group definitions.

Source: District Research, CCCCD. Based on information from Colleague. Run date 7/30/2013 JD

## Brentwood Center Fall-to-Spring Persistence Rate for All Courses by Demographic Group



**Persistence Rate:** Percentage of students who are enrolled as of census for an initial and a subsequent term.

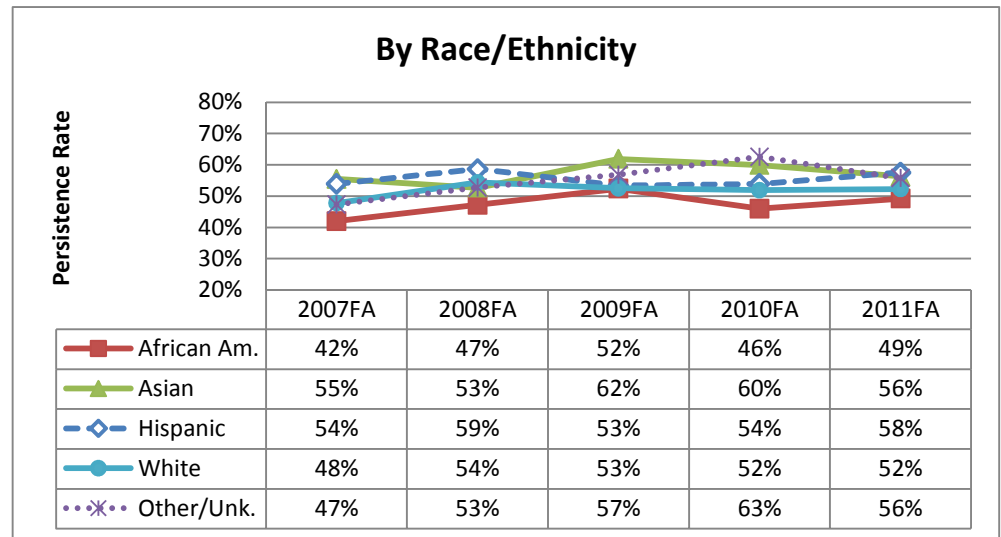
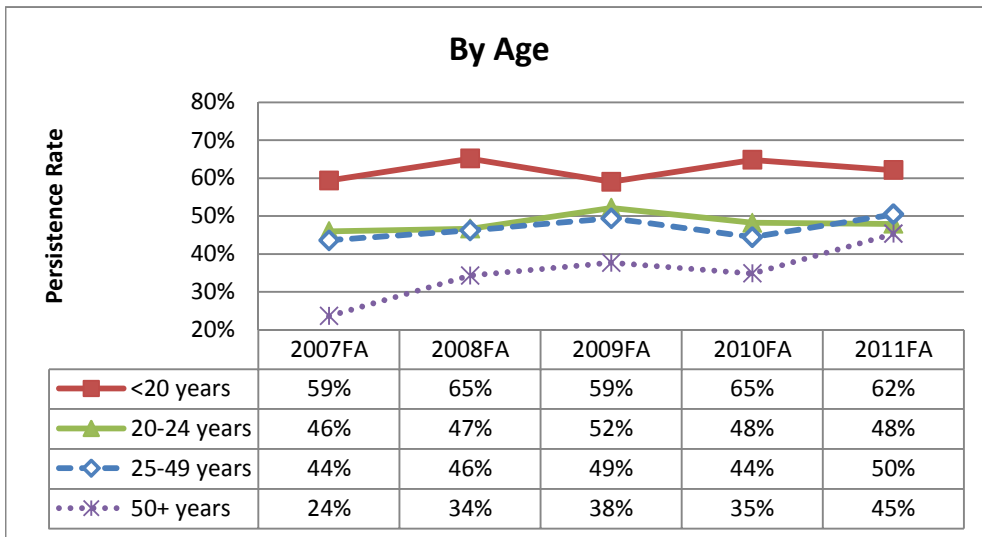
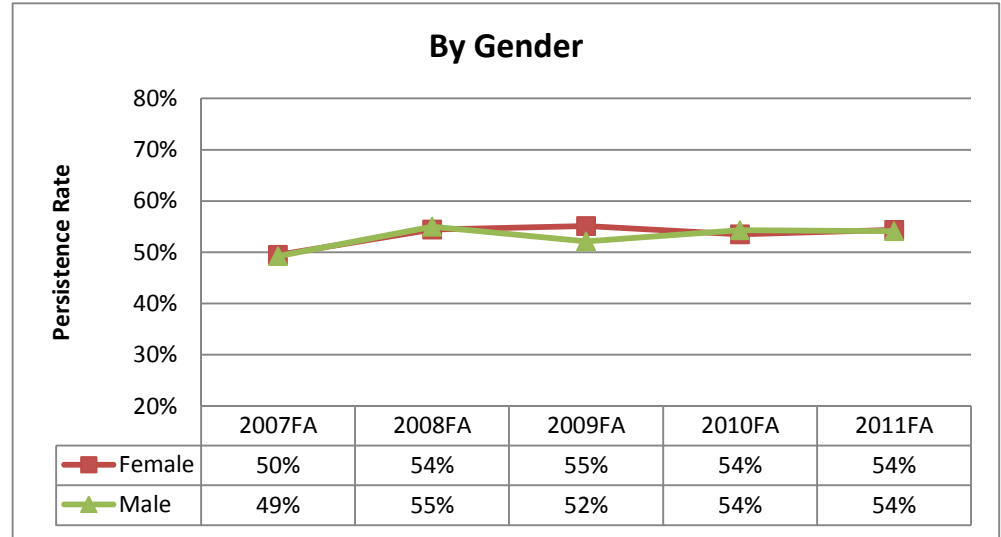
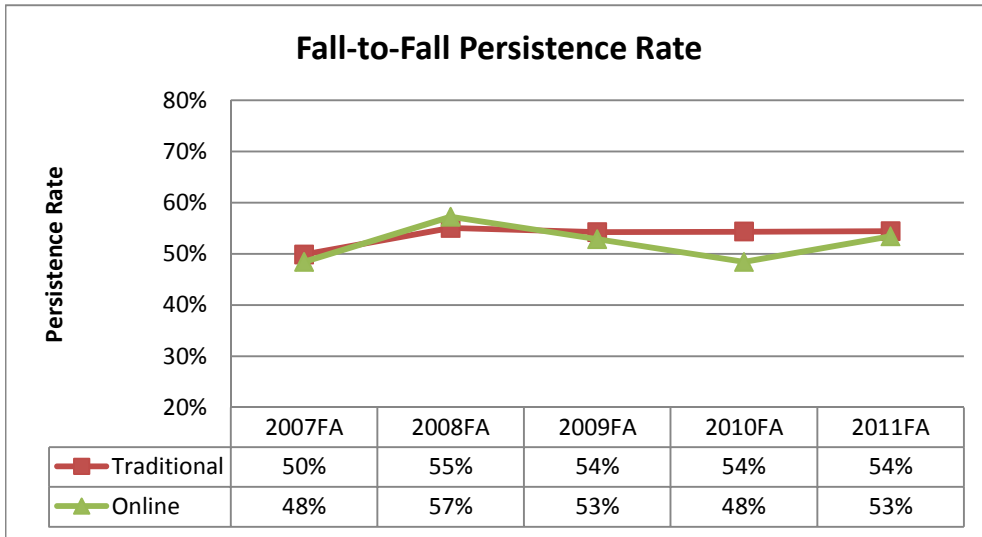
**Numerator:** The number of students who receive a grade of A, B, C, D, F, FW, I\*, P/CR, NP/NC, RD, or W in at least one class in the subsequent primary term.

**Denominator:** The number of students who receive a grade of A, B, C, D, F, FW, I\*, P/CR, NP/NC, RD, W in at least one class in the initial primary term.

See Addendum A for course and group definitions.

Source: District Research, CCCCD. Based on information from Colleague. Run date 7/30/2013 JD

## Brentwood Center Fall-to-Fall Persistence Rate for All Courses by Demographic Group



**Persistence Rate:** Percentage of students who are enrolled as of census for an initial and a subsequent term.

**Numerator:** The number of students who receive a grade of A, B, C, D, F, FW, I\*, P/CR, NP/NC, RD, or W in at least one class in the subsequent primary term.

**Denominator:** The number of students who receive a grade of A, B, C, D, F, FW, I\*, P/CR, NP/NC, RD, W in at least one class in the initial primary term.

See Addendum A for course and group definitions.

Source: District Research, CCCCD. Based on information from Colleague. Run date 7/30/2013 JD

# LEVEL 2 ACCREDITATION TABLES – AGGREGATED BY MEASURE AND DEMOGRAPHIC GROUP

---

Information in this section:

- Success Rate by Gender, Age Group, and Race/Ethnicity for All Courses, Basic Skill Courses, CTE Courses and Degree Applicable Courses
- Retention Rate by Gender, Age Group, and Race/Ethnicity for All Courses, Basic Skill Courses, CTE Courses and Degree Applicable Courses
- Number of Enrollments by Gender, Age Group, and Race/Ethnicity for All Courses, Basic Skill Courses, CTE Courses and Degree Applicable Courses
- Number of Successful Course Completion Enrollments by Gender, Age Group, and Race/Ethnicity for All Courses, Basic Skill Courses, CTE Courses and Degree Applicable Courses
- Number of Course Completion Enrollments by Gender, Age Group, and Race/Ethnicity for All Courses, Basic Skill Courses, CTE Courses and Degree Applicable Courses
- Fall-to-Spring Persistence Rate by Gender, Age Group, and Race/Ethnicity
- Fall-to-Fall Persistence Rate by Gender, Age Group, and Race/Ethnicity
- Number of Unduplicated Students by Fall Term by Gender, Age Group, and Race/Ethnicity
- Number of Unduplicated Students Continuing from Fall to Spring by Gender, Age Group, and Race/Ethnicity
- Number of Unduplicated Students Continuing from Fall to the Following Fall by Gender, Age Group, and Race/Ethnicity
- Awards by Gender, Age Group, and Race/Ethnicity (See College Report)



**Brentwood Center**  
**Level 2 Accreditation Tables - Aggregated by Measure and Demographic Group**

<b>ALL COURSES BY GENDER</b>							
ALL COURSES	GENDER	2007FA	2008FA	2009FA	2010FA	2011FA	2012FA
Success Rate	Female	72%	72%	71%	72%	77%	74%
	Male	65%	67%	64%	67%	72%	69%
	Gender Unknown	69%	66%	75%	69%	76%	84%
Retention Rate	Female	85%	84%	84%	83%	87%	85%
	Male	81%	82%	79%	83%	86%	86%
	Gender Unknown	84%	81%	86%	83%	87%	94%
Number of Enrollments	Female	1,858	2,279	2,382	2,378	1,929	1,924
	Male	1,062	1,401	1,564	1,560	1,462	1,432
	Gender Unknown	87	108	71	58	38	31
Number Successful	Female	1,329	1,635	1,689	1,724	1,484	1,427
	Male	687	934	1,005	1,044	1,058	990
	Gender Unknown	60	71	53	40	29	26
Number Retained	Female	1,582	1,925	1,990	1,972	1,682	1,638
	Male	859	1,155	1,242	1,289	1,257	1,225
	Gender Unknown	73	88	61	48	33	29
<b>ALL COURSES BY AGE GROUP</b>							
ALL COURSES	AGE GROUP	2007FA	2008FA	2009FA	2010FA	2011FA	2012FA
Success Rate	< 20 years old	67%	68%	67%	71%	76%	74%
	20 to 24 years old	67%	70%	68%	67%	71%	70%
	25 to 49 years old	75%	74%	71%	73%	79%	69%
	50 + years old	81%	77%	71%	71%	81%	76%
	Age unknown		100%				
Retention Rate	< 20 years old	83%	84%	84%	84%	89%	90%
	20 to 24 years old	81%	82%	80%	81%	84%	83%
	25 to 49 years old	86%	83%	80%	81%	87%	80%
	50 + years old	92%	87%	75%	85%	87%	82%
	Age unknown		100%				
Number of Enrollments	< 20 years old	1,410	1,970	1,970	1,875	1,508	1,522
	20 to 24 years old	795	905	1,076	1,147	1,086	1,104
	25 to 49 years old	709	825	886	894	752	682
	50 + years old	93	86	84	80	83	79
	Age unknown		2	1			
Number Successful	< 20 years old	938	1,336	1,325	1,330	1,144	1,132
	20 to 24 years old	530	629	729	769	768	778
	25 to 49 years old	533	607	633	652	592	473
	50 + years old	75	66	60	57	67	60
	Age unknown		2				
Number Retained	< 20 years old	1,173	1,663	1,662	1,583	1,335	1,363
	20 to 24 years old	643	744	863	931	909	920
	25 to 49 years old	612	684	705	727	656	544
	50 + years old	86	75	63	68	72	65
	Age unknown		2				

See Addendum A for data and group definitions.

na = Not available.

Source: District Research. Based on information from Datatel Colleague. 7/30/2013 JD

**Brentwood Center**  
**Level 2 Accreditation Tables - Aggregated by Measure and Demographic Group**

<b>ALL COURSES BY RACE/ETHNICITY</b>							
<b>ALL COURSES</b>	<b>RACE/ETHNICITY</b>	<b>2007FA</b>	<b>2008FA</b>	<b>2009FA</b>	<b>2010FA</b>	<b>2011FA</b>	<b>2012FA</b>
Success Rate	African American	59%	57%	56%	60%	68%	63%
	Asian	69%	73%	68%	74%	80%	80%
	Hispanic	70%	69%	67%	69%	74%	71%
	White	71%	73%	71%	73%	78%	74%
	Other/Undeclared	63%	66%	69%	70%	73%	71%
Retention Rate	African American	77%	72%	77%	76%	83%	81%
	Asian	85%	84%	78%	83%	90%	89%
	Hispanic	84%	85%	81%	83%	86%	86%
	White	85%	85%	83%	84%	88%	86%
	Other/Undeclared	77%	82%	84%	83%	86%	84%
Number of Enrollments	African American	216	343	348	387	364	319
	Asian	252	282	280	301	229	293
	Hispanic	917	1,113	1,135	1,171	1,046	1,167
	White	1,367	1,718	1,677	1,631	1,377	1,273
	Other/Undeclared	255	332	577	506	413	335
Number Successful	African American	127	197	196	231	247	200
	Asian	175	207	190	223	184	235
	Hispanic	644	766	764	812	772	827
	White	970	1,251	1,196	1,189	1,068	943
	Other/Undeclared	160	219	401	353	300	238
Number Retained	African American	167	248	269	293	301	257
	Asian	213	238	219	251	206	261
	Hispanic	774	947	924	977	897	1,004
	White	1,163	1,463	1,398	1,367	1,214	1,090
	Other/Undeclared	197	272	483	421	354	280

See Addendum A for data and group definitions.

na = Not available.

Source: District Research. Based on information from Datatel Colleague. 7/30/2013 JD

**Brentwood Center**  
**Level 2 Accreditation Tables - Aggregated by Measure and Demographic Group**

<b>BASIC SKILLS COURSES BY GENDER</b>							
BASIC SKILLS	GENDER	2007FA	2008FA	2009FA	2010FA	2011FA	2012FA
Success Rate	Female	73%	66%	72%	76%	72%	72%
	Male	53%	47%	55%	65%	69%	65%
	Gender Unknown	54%	64%	73%	63%	80%	100%
Retention Rate	Female	89%	81%	82%	85%	84%	84%
	Male	82%	64%	83%	81%	80%	85%
	Gender Unknown	92%	73%	91%	75%	80%	100%
Number of Enrollments	Female	166	153	212	183	193	207
	Male	77	100	109	124	123	130
	Gender Unknown	13	11	11	8	5	4
Number Successful	Female	121	101	153	139	139	150
	Male	41	47	60	80	85	85
	Gender Unknown	7	7	8	5	4	4
Number Retained	Female	147	124	174	155	163	173
	Male	63	64	90	101	99	111
	Gender Unknown	12	8	10	6	4	4
<b>BASIC SKILLS COURSES BY AGE GROUP</b>							
BASIC SKILLS	AGE GROUP	2007FA	2008FA	2009FA	2010FA	2011FA	2012FA
Success Rate	< 20 years old	62%	57%	69%	72%	71%	72%
	20 to 24 years old	56%	48%	58%	63%	69%	64%
	25 to 49 years old	75%	67%	69%	77%	73%	68%
	50 + years old	77%	67%	46%	40%	71%	90%
Retention Rate	< 20 years old	82%	76%	88%	84%	81%	90%
	20 to 24 years old	82%	55%	78%	77%	88%	76%
	25 to 49 years old	95%	78%	80%	86%	83%	79%
	50 + years old	92%	89%	46%	80%	79%	90%
Number of Enrollments	< 20 years old	128	153	163	156	154	183
	20 to 24 years old	34	33	50	57	51	70
	25 to 49 years old	81	69	106	92	102	78
	50 + years old	13	9	13	10	14	10
Number Successful	< 20 years old	79	87	113	113	109	132
	20 to 24 years old	19	16	29	36	35	45
	25 to 49 years old	61	46	73	71	74	53
	50 + years old	10	6	6	4	10	9
Number Retained	< 20 years old	105	116	144	131	125	164
	20 to 24 years old	28	18	39	44	45	53
	25 to 49 years old	77	54	85	79	85	62
	50 + years old	12	8	6	8	11	9

See Addendum A for data and group definitions.

na = Not available.

Source: District Research. Based on information from Datatel Colleague. 7/30/2013 JD

**Brentwood Center**  
**Level 2 Accreditation Tables - Aggregated by Measure and Demographic Group**

<b>BASIC SKILLS COURSES BY RACE/ETHNICITY</b>							
<b>BASIC SKILLS</b>	<b>RACE/ETHNICITY</b>	<b>2007FA</b>	<b>2008FA</b>	<b>2009FA</b>	<b>2010FA</b>	<b>2011FA</b>	<b>2012FA</b>
Success Rate	African American	55%	56%	61%	78%	68%	49%
	Asian	60%	64%	73%	44%	79%	86%
	Hispanic	72%	61%	67%	74%	70%	70%
	White	67%	60%	64%	73%	74%	74%
	Other/Undeclared	41%	45%	76%	56%	70%	76%
Retention Rate	African American	82%	66%	85%	81%	83%	59%
	Asian	80%	79%	82%	75%	79%	95%
	Hispanic	91%	81%	82%	87%	80%	86%
	White	87%	73%	79%	83%	87%	89%
	Other/Undeclared	65%	59%	88%	75%	87%	90%
Number of Enrollments	African American	22	32	54	37	53	41
	Asian	10	14	22	16	14	22
	Hispanic	123	104	117	136	138	151
	White	84	92	97	94	86	98
	Other/Undeclared	17	22	42	32	30	29
Number Successful	African American	12	18	33	29	36	20
	Asian	6	9	16	7	11	19
	Hispanic	88	63	78	101	96	105
	White	56	55	62	69	64	73
	Other/Undeclared	7	10	32	18	21	22
Number Retained	African American	18	21	46	30	44	24
	Asian	8	11	18	12	11	21
	Hispanic	112	84	96	118	110	130
	White	73	67	77	78	75	87
	Other/Undeclared	11	13	37	24	26	26

See Addendum A for data and group definitions.

na = Not available.

Source: District Research. Based on information from Datatel Colleague. 7/30/2013 JD

**Brentwood Center**  
**Level 2 Accreditation Tables - Aggregated by Measure and Demographic Group**

**CAREER AND TECHNICAL EDUCATION COURSES BY GENDER**

CTE	GENDER	2007FA	2008FA	2009FA	2010FA	2011FA	2012FA
Success Rate	Female	75%	68%	69%	77%	81%	84%
	Male	69%	77%	75%	68%	70%	73%
	Gender Unknown	83%	53%	60%	86%	100%	67%
Retention Rate	Female	91%	83%	83%	87%	91%	94%
	Male	87%	89%	86%	86%	86%	88%
	Gender Unknown	92%	73%	80%	100%	100%	100%
Number of Enrollments	Female	295	327	325	242	144	121
	Male	163	229	205	156	168	113
	Gender Unknown	12	15	10	7	2	3
Number Successful	Female	222	222	224	187	116	102
	Male	113	177	154	106	118	82
	Gender Unknown	10	8	6	6	2	2
Number Retained	Female	267	273	270	210	131	114
	Male	142	203	176	134	145	100
	Gender Unknown	11	11	8	7	2	3

**CAREER AND TECHNICAL EDUCATION COURSES BY AGE GROUP**

CTE	AGE GROUP	2007FA	2008FA	2009FA	2010FA	2011FA	2012FA
Success Rate	< 20 years old	62%	66%	66%	72%	74%	73%
	20 to 24 years old	72%	71%	67%	66%	70%	82%
	25 to 49 years old	80%	75%	78%	80%	83%	81%
	50 + years old	83%	81%	87%	83%	79%	75%
	Age unknown		100%				
Retention Rate	< 20 years old	89%	85%	86%	84%	92%	90%
	20 to 24 years old	86%	84%	81%	85%	86%	95%
	25 to 49 years old	91%	85%	84%	89%	87%	88%
	50 + years old	90%	93%	91%	94%	86%	92%
	Age unknown		100%				
Number of Enrollments	< 20 years old	128	205	197	138	142	73
	20 to 24 years old	105	140	140	102	83	85
	25 to 49 years old	197	198	179	147	75	67
	50 + years old	40	27	23	18	14	12
	Age unknown		1	1			
Number Successful	< 20 years old	79	136	131	99	105	53
	20 to 24 years old	76	100	94	67	58	70
	25 to 49 years old	157	148	139	118	62	54
	50 + years old	33	22	20	15	11	9
	Age unknown		1				
Number Retained	< 20 years old	114	174	169	116	130	66
	20 to 24 years old	90	118	113	87	71	81
	25 to 49 years old	180	169	151	131	65	59
	50 + years old	36	25	21	17	12	11
	Age unknown		1				

See Addendum A for data and group definitions.

na = Not available.

Source: District Research. Based on information from Datatel Colleague. 7/30/2013 JD

**Brentwood Center**  
**Level 2 Accreditation Tables - Aggregated by Measure and Demographic Group**

<b>CAREER AND TECHNICAL EDUCATION COURSES BY RACE/ETHNICITY</b>							
CTE	RACE/ETHNICITY	2007FA	2008FA	2009FA	2010FA	2011FA	2012FA
Success Rate	African American	79%	54%	62%	51%	60%	57%
	Asian	62%	69%	81%	75%	82%	82%
	Hispanic	73%	66%	68%	74%	79%	85%
	White	78%	77%	72%	81%	75%	79%
	Other/Undeclared	61%	73%	75%	68%	82%	79%
Retention Rate	African American	94%	77%	78%	79%	76%	83%
	Asian	79%	82%	89%	81%	91%	91%
	Hispanic	89%	86%	82%	87%	91%	99%
	White	93%	88%	84%	90%	89%	88%
	Other/Undeclared	83%	84%	90%	84%	95%	93%
Number of Enrollments	African American	33	52	63	47	42	30
	Asian	39	39	36	32	22	33
	Hispanic	175	152	123	117	85	67
	White	187	273	229	172	127	78
	Other/Undeclared	36	55	89	37	38	29
Number Successful	African American	26	28	39	24	25	17
	Asian	24	27	29	24	18	27
	Hispanic	128	101	84	86	67	57
	White	145	211	165	140	95	62
	Other/Undeclared	22	40	67	25	31	23
Number Retained	African American	31	40	49	37	32	25
	Asian	31	32	32	26	20	30
	Hispanic	155	130	101	102	77	66
	White	173	239	192	155	113	69
	Other/Undeclared	30	46	80	31	36	27

See Addendum A for data and group definitions.

na = Not available.

Source: District Research. Based on information from Datatel Colleague. 7/30/2013 JD

**Brentwood Center**  
**Level 2 Accreditation Tables - Aggregated by Measure and Demographic Group**

<b>DEGREE APPLICABLE COURSES BY GENDER</b>							
DEGREE APPL.	GENDER	2007FA	2008FA	2009FA	2010FA	2011FA	2012FA
Success Rate	Female	71%	72%	71%	72%	77%	74%
	Male	66%	68%	65%	67%	73%	70%
	Gender Unknown	73%	66%	75%	70%	76%	81%
Retention Rate	Female	85%	85%	84%	83%	88%	85%
	Male	81%	84%	79%	83%	86%	86%
	Gender Unknown	82%	82%	85%	84%	88%	93%
Number of Enrollments	Female	1,682	2,117	2,165	2,195	1,736	1,717
	Male	982	1,299	1,454	1,436	1,339	1,302
	Gender Unknown	73	97	60	50	33	27
Number Successful	Female	1,200	1,528	1,533	1,585	1,345	1,277
	Male	644	886	945	964	973	905
	Gender Unknown	53	64	45	35	25	22
Number Retained	Female	1,426	1,792	1,811	1,817	1,519	1,465
	Male	793	1,089	1,151	1,188	1,158	1,114
	Gender Unknown	60	80	51	42	29	25
<b>DEGREE APPLICABLE COURSES BY AGE GROUP</b>							
DEGREE APPL.	AGE GROUP	2007FA	2008FA	2009FA	2010FA	2011FA	2012FA
Success Rate	< 20 years old	67%	69%	67%	71%	76%	75%
	20 to 24 years old	67%	70%	68%	67%	71%	71%
	25 to 49 years old	75%	74%	72%	72%	80%	70%
	50 + years old	81%	78%	76%	76%	83%	74%
	Age unknown		100%				
Retention Rate	< 20 years old	83%	85%	84%	84%	89%	90%
	20 to 24 years old	81%	83%	80%	81%	83%	84%
	25 to 49 years old	85%	83%	79%	81%	88%	80%
	50 + years old	92%	87%	80%	86%	88%	81%
	Age unknown		100%				
Number of Enrollments	< 20 years old	1,277	1,813	1,804	1,719	1,354	1,339
	20 to 24 years old	758	871	1,025	1,090	1,035	1,034
	25 to 49 years old	624	750	778	802	650	604
	50 + years old	78	77	71	70	69	69
	Age unknown		2	1			
Number Successful	< 20 years old	855	1,247	1,211	1,217	1,035	1,000
	20 to 24 years old	509	612	699	733	733	733
	25 to 49 years old	470	557	559	581	518	420
	50 + years old	63	60	54	53	57	51
	Age unknown		2				
Number Retained	< 20 years old	1,063	1,543	1,515	1,452	1,210	1,199
	20 to 24 years old	613	725	823	887	864	867
	25 to 49 years old	531	624	618	648	571	482
	50 + years old	72	67	57	60	61	56
	Age unknown		2				

See Addendum A for data and group definitions.

na = Not available.

Source: District Research. Based on information from Datatel Colleague. 7/30/2013 JD

**Brentwood Center**  
**Level 2 Accreditation Tables - Aggregated by Measure and Demographic Group**

<b>DEGREE APPLICABLE COURSES BY RACE/ETHNICITY</b>							
DEGREE APPL.	RACE/ETHNICITY	2007FA	2008FA	2009FA	2010FA	2011FA	2012FA
Success Rate	African American	59%	57%	56%	58%	68%	65%
	Asian	70%	74%	68%	76%	80%	80%
	Hispanic	70%	70%	67%	69%	74%	71%
	White	71%	74%	72%	73%	78%	74%
	Other/Undeclared	65%	68%	69%	71%	73%	71%
Retention Rate	African American	77%	73%	76%	75%	83%	84%
	Asian	85%	85%	78%	84%	91%	89%
	Hispanic	83%	86%	81%	83%	87%	86%
	White	85%	86%	84%	84%	88%	85%
	Other/Undeclared	78%	83%	83%	84%	86%	83%
Number of Enrollments	African American	192	310	293	350	311	278
	Asian	242	268	257	285	215	271
	Hispanic	789	1,007	1,017	1,035	908	1,016
	White	1,277	1,620	1,577	1,537	1,291	1,175
	Other/Undeclared	237	308	535	474	383	306
Number Successful	African American	113	178	163	202	211	180
	Asian	169	198	174	216	173	216
	Hispanic	552	702	685	711	676	722
	White	910	1,191	1,132	1,120	1,004	870
	Other/Undeclared	153	209	369	335	279	216
Number Retained	African American	147	226	222	263	257	233
	Asian	205	227	200	239	195	240
	Hispanic	658	861	827	859	787	874
	White	1,084	1,390	1,318	1,289	1,139	1,003
	Other/Undeclared	185	257	446	397	328	254

See Addendum A for data and group definitions.

na = Not available.

Source: District Research. Based on information from Datatel Colleague. 7/30/2013 JD



**Brentwood Center**  
**Level 2 Accreditation Tables - Aggregated by Measure and Demographic Group**

<b>PERSISTENCE BY GENDER</b>							
<b>PERSISTENCE</b>	<b>GENDER</b>	<b>2007FA</b>	<b>2008FA</b>	<b>2009FA</b>	<b>2010FA</b>	<b>2011FA</b>	<b>2012FA</b>
Fall-to-Spring Persistence Rate	Female	65%	72%	73%	72%	74%	72%
	Male	69%	74%	73%	72%	75%	73%
	Gender Unknown	74%	65%	79%	79%	84%	83%
Fall-to-Fall Persistence Rate	Female	50%	54%	55%	54%	54%	na
	Male	49%	55%	52%	54%	54%	na
	Gender Unknown	66%	56%	57%	56%	56%	na
Number of Unduplicated Students	Female	1,220	1,424	1,518	1,514	1,315	1,291
	Male	658	857	971	994	955	914
	Gender Unknown	53	63	47	43	25	23
Number of Students Continuing to Spring	Female	791	1,029	1,115	1,086	974	930
	Male	456	631	710	720	720	667
	Gender Unknown	39	41	37	34	21	19
Number of Students Continuing to Fall	Female	604	775	837	810	715	na
	Male	324	471	506	540	517	na
	Gender Unknown	35	35	27	24	14	na
<b>PERSISTENCE BY AGE GROUP</b>							
<b>PERSISTENCE</b>	<b>AGE_GROUP</b>	<b>2007FA</b>	<b>2008FA</b>	<b>2009FA</b>	<b>2010FA</b>	<b>2011FA</b>	<b>2012FA</b>
Fall-to-Spring Persistence Rate	< 20 years old	73%	80%	78%	78%	79%	80%
	20 to 24 years old	69%	69%	73%	70%	72%	72%
	25 to 49 years old	58%	66%	69%	66%	71%	63%
	50 + years old	49%	49%	55%	70%	72%	60%
	Age unknown		0%	0%			
Fall-to-Fall Persistence Rate	< 20 years old	59%	65%	59%	65%	62%	na
	20 to 24 years old	46%	47%	52%	48%	48%	na
	25 to 49 years old	44%	46%	49%	44%	50%	na
	50 + years old	24%	34%	38%	35%	45%	na
	Age unknown		0%	0%			na
Number of Unduplicated Students	< 20 years old	780	1,079	1,110	1,071	942	895
	20 to 24 years old	526	600	702	759	730	735
	25 to 49 years old	553	593	654	655	559	531
	50 + years old	72	70	69	66	64	67
	Age unknown		2	1			
Number of Students Continuing to Spring	< 20 years old	566	862	861	832	746	713
	20 to 24 years old	362	415	514	531	524	529
	25 to 49 years old	323	390	449	431	399	334
	50 + years old	35	34	38	46	46	40
	Age unknown		-	-			
Number of Students Continuing to Fall	< 20 years old	463	703	655	694	585	na
	20 to 24 years old	242	280	366	366	350	na
	25 to 49 years old	241	274	323	291	282	na
	50 + years old	17	24	26	23	29	na
	Age unknown		-	-			na

See Addendum A for data and group definitions.

na = Not available.

Source: District Research. Based on information from Datatel Colleague. 7/30/2013 JD

**Brentwood Center**  
**Level 2 Accreditation Tables - Aggregated by Measure and Demographic Group**

<b>PERSISTENCE BY RACE/ETHNICITY</b>							
<b>PERSISTENCE</b>	<b>RACE/ETHNICITY</b>	<b>2007FA</b>	<b>2008FA</b>	<b>2009FA</b>	<b>2010FA</b>	<b>2011FA</b>	<b>2012FA</b>
Fall-to-Spring Persistence Rate	African American	59%	61%	68%	65%	72%	66%
	Asian	73%	76%	79%	74%	79%	80%
	Hispanic	68%	77%	74%	71%	72%	74%
	White	66%	72%	73%	72%	75%	71%
	Other/Undeclared	65%	74%	74%	79%	81%	73%
Fall-to-Fall Persistence Rate	African American	42%	47%	52%	46%	49%	na
	Asian	55%	53%	62%	60%	56%	na
	Hispanic	54%	59%	53%	54%	58%	na
	White	48%	54%	53%	52%	52%	na
	Other/Undeclared	47%	53%	57%	63%	56%	na
Number of Unduplicated Students	African American	150	233	254	272	254	225
	Asian	182	186	194	227	174	207
	Hispanic	586	699	744	757	709	769
	White	846	1,023	1,013	988	880	807
	Other/Undeclared	167	203	331	307	278	220
Number of Students Continuing to Spring	African American	88	141	172	178	184	148
	Asian	133	141	153	167	137	166
	Hispanic	398	536	551	541	513	571
	White	558	733	741	712	657	570
	Other/Undeclared	109	150	245	242	224	161
Number of Students Continuing to Fall	African American	63	110	133	125	125	na
	Asian	101	98	120	136	98	na
	Hispanic	316	410	397	408	408	na
	White	404	556	532	513	460	na
	Other/Undeclared	79	107	188	192	155	na

See Addendum A for data and group definitions.

na = Not available.

Source: District Research. Based on information from Datatel Colleague. 7/30/2013 JD

# LEVEL 3 ACCREDITATION TABLES – AGGREGATED BY MEASURE AND DEMOGRAPHIC GROUP

---

Information in this section:

- Success Rate by Gender, Age Group, and Race/Ethnicity and by Traditional and Online Instruction Methods for All Courses, Basic Skill Courses, CTE Courses and Degree Applicable Courses
- Retention Rate by Gender, Age Group, and Race/Ethnicity and by Traditional and Online Instruction Methods for All Courses, Basic Skill Courses, CTE Courses and Degree Applicable Courses
- Number of Enrollments by Gender, Age Group, and Race/Ethnicity and by Traditional and Online Instruction Methods for All Courses, Basic Skill Courses, CTE Courses and Degree Applicable Courses
- Number of Successful Course Completion Enrollments by Gender, Age Group, and Race/Ethnicity and by Traditional and Online Instruction Methods for All Courses, Basic Skill Courses, CTE Courses and Degree Applicable Courses
- Number of Course Completion Enrollments by Gender, Age Group, and Race/Ethnicity and by Traditional and Online Instruction Methods for All Courses, Basic Skill Courses, CTE Courses and Degree Applicable Courses
- Fall-to-Spring Persistence Rate by Gender, Age Group, and Race/Ethnicity and Traditional and Online Instruction Methods
- Fall-to-Fall Persistence Rate by Gender, Age Group, and Race/Ethnicity and Traditional and Online Instruction Methods
- Number of Unduplicated Students by Fall Term by Gender, Age Group, and Race/Ethnicity and Traditional and Online Instruction Methods
- Number of Unduplicated Students Continuing from Fall to Spring by Gender, Age Group, and Race/Ethnicity and Traditional and Online Instruction Methods
- Number of Unduplicated Students Continuing from Fall to the Following Fall by Gender, Age Group, and Race/Ethnicity and Traditional and Online Instruction Methods
- Type of Awards by Gender, Age Group, and Race/Ethnicity (See College Report)

**Brentwood Center**  
**Level 3 Accreditation Tables - Aggregated by Measure, Demographic Group and Instruction Method**

<b>ALL COURSES BY GENDER</b>									
ALL COURSES	GENDER	Instr. Method	2007FA	2008FA	2009FA	2010FA	2011FA	2012FA	
Success Rate	Female	Traditional	71%	72%	71%	72%	77%	74%	
		Online	72%	68%	60%	76%	88%	79%	
	Male	Traditional	65%	67%	64%	67%	72%	69%	
		Online	69%	50%	62%	60%	79%	82%	
	Gender Unknown	Traditional	69%	64%	74%	71%	76%	83%	
		Online	100%	100%	80%			100%	
	Retention Rate	Female	Traditional	85%	85%	84%	83%	87%	85%
			Online	79%	81%	75%	84%	89%	87%
Male		Traditional	81%	83%	79%	83%	86%	85%	
		Online	81%	60%	78%	83%	91%	90%	
Gender Unknown		Traditional	83%	81%	86%	82%	87%	93%	
		Online	100%	100%	80%	100%		100%	
Number of Enrollments		Female	Traditional	1,812	2,201	2,262	2,259	1,856	1,837
			Online	47	79	121	119	73	87
	Male	Traditional	1,046	1,359	1,481	1,481	1,405	1,381	
		Online	16	40	82	78	57	51	
	Gender Unknown	Traditional	84	103	65	56	38	30	
		Online	2	4	5	2		1	
	Number Successful	Female	Traditional	1,295	1,582	1,617	1,633	1,420	1,358
			Online	34	54	73	91	64	69
Male		Traditional	676	913	953	997	1,013	948	
		Online	11	20	51	47	45	42	
Gender Unknown		Traditional	58	66	48	40	29	25	
		Online	2	4	4			1	
Number Retained		Female	Traditional	1,546	1,862	1,900	1,872	1,617	1,562
			Online	37	64	91	100	65	76
	Male	Traditional	846	1,130	1,177	1,224	1,205	1,179	
		Online	13	24	64	65	52	46	
	Gender Unknown	Traditional	70	83	56	46	33	28	
		Online	2	4	4	2		1	

See Addendum A for data and group definitions.

na = Not available.

Source: District Research. Based on information from Datatel Colleague. 7/30/2013 JD

**Brentwood Center**

**Level 3 Accreditation Tables - Aggregated by Measure, Demographic Group and Instruction Method**

<b>ALL COURSES BY AGE GROUP</b>									
<b>ALL COURSES</b>	<b>AGE GROUP</b>	<b>Instr. Method</b>	<b>2007FA</b>	<b>2008FA</b>	<b>2009FA</b>	<b>2010FA</b>	<b>2011FA</b>	<b>2012FA</b>	
Success Rate	< 20 years old	Traditional	67%	68%	68%	71%	76%	74%	
		Online	65%	64%	62%	69%	84%	89%	
	20 to 24 years old	Traditional	67%	70%	68%	67%	70%	70%	
		Online	70%	60%	61%	70%	78%	75%	
	25 to 49 years old	Traditional	75%	74%	72%	73%	78%	69%	
		Online	77%	60%	57%	73%	92%	80%	
	50 + years old	Traditional	80%	77%	70%	74%	81%	75%	
		Online	100%	80%	82%	50%	80%	100%	
	Age unknown	Traditional		100%					
	Retention Rate	< 20 years old	Traditional	83%	85%	85%	84%	88%	89%
			Online	82%	71%	81%	87%	93%	100%
		20 to 24 years old	Traditional	81%	82%	81%	81%	84%	83%
Online			74%	76%	73%	87%	80%	85%	
25 to 49 years old		Traditional	86%	83%	80%	81%	87%	80%	
		Online	82%	77%	70%	80%	100%	83%	
50 + years old		Traditional	92%	88%	74%	87%	87%	82%	
		Online	100%	80%	82%	70%	80%	100%	
Age unknown		Traditional		100%					
Number of Enrollments		< 20 years old	Traditional	1,393	1,911	1,875	1,798	1,464	1,486
			Online	17	59	95	77	44	36
		20 to 24 years old	Traditional	772	880	1,020	1,094	1,041	1,045
	Online		23	25	56	53	45	59	
	25 to 49 years old	Traditional	687	790	840	835	716	641	
		Online	22	35	46	59	36	41	
	50 + years old	Traditional	90	81	73	70	78	76	
		Online	3	5	11	10	5	3	
	Age unknown	Traditional		2	1				
	Number Successful	< 20 years old	Traditional	927	1,298	1,266	1,277	1,107	1,100
			Online	11	38	59	53	37	32
		20 to 24 years old	Traditional	514	614	695	732	733	734
Online			16	15	34	37	35	44	
25 to 49 years old		Traditional	516	586	607	609	559	440	
		Online	17	21	26	43	33	33	
50 + years old		Traditional	72	62	51	52	63	57	
		Online	3	4	9	5	4	3	
Age unknown		Traditional		2					
Number Retained		< 20 years old	Traditional	1,159	1,621	1,585	1,516	1,294	1,327
			Online	14	42	77	67	41	36
		20 to 24 years old	Traditional	626	725	822	885	873	870
	Online		17	19	41	46	36	50	
	25 to 49 years old	Traditional	594	657	673	680	620	510	
		Online	18	27	32	47	36	34	
	50 + years old	Traditional	83	71	54	61	68	62	
		Online	3	4	9	7	4	3	
	Age unknown	Traditional		2					

See Addendum A for data and group definitions.

na = Not available.

Source: District Research. Based on information from Datatel Colleague. 7/30/2013 JD

**Brentwood Center**

**Level 3 Accreditation Tables - Aggregated by Measure, Demographic Group and Instruction Method**

<b>ALL COURSES BY RACE/ETHNICITY</b>									
<b>ALL COURSES</b>	<b>RACE/ETHNICITY</b>	<b>Instr. Method</b>	<b>2007FA</b>	<b>2008FA</b>	<b>2009FA</b>	<b>2010FA</b>	<b>2011FA</b>	<b>2012FA</b>	
Success Rate	African American	Traditional	60%	58%	56%	60%	67%	62%	
		Online		55%	55%	44%	83%	81%	
	Asian	Traditional	70%	73%	69%	74%	81%	80%	
		Online	60%	86%	50%	67%	67%	89%	
	Hispanic	Traditional	70%	69%	68%	70%	73%	70%	
		Online	67%	61%	51%	65%	84%	83%	
	White	Traditional	71%	73%	72%	73%	77%	74%	
		Online	83%	59%	66%	75%	85%	78%	
	Other/Undeclared	Traditional	63%	66%	69%	69%	72%	71%	
		Online	67%	75%	81%	79%	82%	75%	
	Retention Rate	African American	Traditional	78%	72%	77%	76%	82%	80%
			Online	33%	82%	77%	63%	94%	88%
		Asian	Traditional	85%	84%	79%	84%	90%	89%
			Online	60%	100%	60%	78%	100%	100%
Hispanic		Traditional	85%	86%	82%	83%	86%	86%	
		Online	78%	65%	77%	86%	89%	92%	
White		Traditional	85%	86%	84%	84%	88%	86%	
		Online	89%	71%	75%	86%	90%	86%	
Other/Undeclared		Traditional	77%	82%	84%	83%	86%	84%	
		Online	67%	88%	86%	89%	82%	75%	
Number of Enrollments		African American	Traditional	213	332	326	371	346	303
			Online	3	11	22	16	18	16
		Asian	Traditional	247	275	270	292	226	284
			Online	5	7	10	9	3	9
	Hispanic	Traditional	899	1,082	1,082	1,108	1,009	1,115	
		Online	18	31	53	63	37	52	
	White	Traditional	1,331	1,659	1,575	1,548	1,316	1,223	
		Online	36	59	102	83	61	50	
	Other/Undeclared	Traditional	252	316	556	478	402	323	
		Online	3	16	21	28	11	12	
	Number Successful	African American	Traditional	127	191	184	224	232	187
			Online		6	12	7	15	13
		Asian	Traditional	172	201	185	217	182	227
			Online	3	6	5	6	2	8
Hispanic		Traditional	632	747	737	771	741	784	
		Online	12	19	27	41	31	43	
White		Traditional	940	1,216	1,129	1,127	1,016	904	
		Online	30	35	67	62	52	39	
Other/Undeclared		Traditional	158	207	384	331	291	229	
		Online	2	12	17	22	9	9	
Number Retained		African American	Traditional	166	239	252	283	284	243
			Online	1	9	17	10	17	14
		Asian	Traditional	210	231	213	244	203	252
			Online	3	7	6	7	3	9
	Hispanic	Traditional	760	927	883	923	864	956	
		Online	14	20	41	54	33	48	
	White	Traditional	1,131	1,421	1,321	1,296	1,159	1,047	
		Online	32	42	77	71	55	43	
	Other/Undeclared	Traditional	195	258	465	396	345	271	
		Online	2	14	18	25	9	9	

See Addendum A for data and group definitions.

na = Not available.

Source: District Research. Based on information from Datatel Colleague. 7/30/2013 JD

**Brentwood Center**

**Level 3 Accreditation Tables - Aggregated by Measure, Demographic Group and Instruction Method**

<b>BASIC SKILLS COURSES BY GENDER</b>								
BASIC SKILLS	GENDER	Instr. Method	2007FA	2008FA	2009FA	2010FA	2011FA	2012FA
Success Rate	Female	Traditional	73%	66%	72%	76%	72%	72%
	Male	Traditional	53%	47%	55%	65%	69%	65%
	Gender Unknown	Traditional	54%	64%	73%	63%	80%	100%
Retention Rate	Female	Traditional	89%	81%	82%	85%	84%	84%
	Male	Traditional	82%	64%	83%	81%	80%	85%
	Gender Unknown	Traditional	92%	73%	91%	75%	80%	100%
Number of Enrollments	Female	Traditional	166	153	212	183	193	207
	Male	Traditional	77	100	109	124	123	130
	Gender Unknown	Traditional	13	11	11	8	5	4
Number Successful	Female	Traditional	121	101	153	139	139	150
	Male	Traditional	41	47	60	80	85	85
	Gender Unknown	Traditional	7	7	8	5	4	4
Number Retained	Female	Traditional	147	124	174	155	163	173
	Male	Traditional	63	64	90	101	99	111
	Gender Unknown	Traditional	12	8	10	6	4	4
<b>BASIC SKILLS COURSES BY AGE GROUP</b>								
BASIC SKILLS	AGE GROUP	Instr. Method	2007FA	2008FA	2009FA	2010FA	2011FA	2012FA
Success Rate	< 20 years old	Traditional	62%	57%	69%	72%	71%	72%
	20 to 24 years old	Traditional	56%	48%	58%	63%	69%	64%
	25 to 49 years old	Traditional	75%	67%	69%	77%	73%	68%
	50 + years old	Traditional	77%	67%	46%	40%	71%	90%
Retention Rate	< 20 years old	Traditional	82%	76%	88%	84%	81%	90%
	20 to 24 years old	Traditional	82%	55%	78%	77%	88%	76%
	25 to 49 years old	Traditional	95%	78%	80%	86%	83%	79%
	50 + years old	Traditional	92%	89%	46%	80%	79%	90%
Number of Enrollments	< 20 years old	Traditional	128	153	163	156	154	183
	20 to 24 years old	Traditional	34	33	50	57	51	70
	25 to 49 years old	Traditional	81	69	106	92	102	78
	50 + years old	Traditional	13	9	13	10	14	10
Number Successful	< 20 years old	Traditional	79	87	113	113	109	132
	20 to 24 years old	Traditional	19	16	29	36	35	45
	25 to 49 years old	Traditional	61	46	73	71	74	53
	50 + years old	Traditional	10	6	6	4	10	9
Number Retained	< 20 years old	Traditional	105	116	144	131	125	164
	20 to 24 years old	Traditional	28	18	39	44	45	53
	25 to 49 years old	Traditional	77	54	85	79	85	62
	50 + years old	Traditional	12	8	6	8	11	9

See Addendum A for data and group definitions.

na = Not available.

Source: District Research. Based on information from Datatel Colleague. 7/30/2013 JD

**Brentwood Center**

**Level 3 Accreditation Tables - Aggregated by Measure, Demographic Group and Instruction Method**

<b>BASIC SKILLS COURSES BY RACE/ETHNICITY</b>								
<b>BASIC SKILLS</b>	<b>RACE/ETHNICITY</b>	<b>Instr. Method</b>	<b>2007FA</b>	<b>2008FA</b>	<b>2009FA</b>	<b>2010FA</b>	<b>2011FA</b>	<b>2012FA</b>
Success Rate	African American	Traditional	55%	56%	61%	78%	68%	49%
	Asian	Traditional	60%	64%	73%	44%	79%	86%
	Hispanic	Traditional	72%	61%	67%	74%	70%	70%
	White	Traditional	67%	60%	64%	73%	74%	74%
	Other/Undeclared	Traditional	41%	45%	76%	56%	70%	76%
Retention Rate	African American	Traditional	82%	66%	85%	81%	83%	59%
	Asian	Traditional	80%	79%	82%	75%	79%	95%
	Hispanic	Traditional	91%	81%	82%	87%	80%	86%
	White	Traditional	87%	73%	79%	83%	87%	89%
	Other/Undeclared	Traditional	65%	59%	88%	75%	87%	90%
Number of Enrollments	African American	Traditional	22	32	54	37	53	41
	Asian	Traditional	10	14	22	16	14	22
	Hispanic	Traditional	123	104	117	136	138	151
	White	Traditional	84	92	97	94	86	98
	Other/Undeclared	Traditional	17	22	42	32	30	29
Number Successful	African American	Traditional	12	18	33	29	36	20
	Asian	Traditional	6	9	16	7	11	19
	Hispanic	Traditional	88	63	78	101	96	105
	White	Traditional	56	55	62	69	64	73
	Other/Undeclared	Traditional	7	10	32	18	21	22
Number Retained	African American	Traditional	18	21	46	30	44	24
	Asian	Traditional	8	11	18	12	11	21
	Hispanic	Traditional	112	84	96	118	110	130
	White	Traditional	73	67	77	78	75	87
	Other/Undeclared	Traditional	11	13	37	24	26	26

See Addendum A for data and group definitions.

na = Not available.

Source: District Research. Based on information from Datatel Colleague. 7/30/2013 JD



**Brentwood Center**

**Level 3 Accreditation Tables - Aggregated by Measure, Demographic Group and Instruction Method**

<b>CAREER AND TECHNICAL EDUCATION COURSES BY GENDER</b>								
CTE	GENDER	Instr. Method	2007FA	2008FA	2009FA	2010FA	2011FA	2012FA
Success Rate	Female	Traditional	75%	68%	69%	77%	81%	84%
	Male	Traditional	69%	77%	75%	68%	70%	73%
	Gender Unknown	Traditional	83%	53%	60%	86%	100%	67%
Retention Rate	Female	Traditional	91%	83%	83%	87%	91%	94%
	Male	Traditional	87%	89%	86%	86%	86%	88%
	Gender Unknown	Traditional	92%	73%	80%	100%	100%	100%
Number of Enrollments	Female	Traditional	295	327	325	242	144	121
	Male	Traditional	163	229	205	156	168	113
	Gender Unknown	Traditional	12	15	10	7	2	3
Number Successful	Female	Traditional	222	222	224	187	116	102
	Male	Traditional	113	177	154	106	118	82
	Gender Unknown	Traditional	10	8	6	6	2	2
Number Retained	Female	Traditional	267	273	270	210	131	114
	Male	Traditional	142	203	176	134	145	100
	Gender Unknown	Traditional	11	11	8	7	2	3
<b>CAREER AND TECHNICAL EDUCATION COURSES BY AGE GROUP</b>								
CTE	AGE GROUP	Instr. Method	2007FA	2008FA	2009FA	2010FA	2011FA	2012FA
Success Rate	< 20 years old	Traditional	62%	66%	66%	72%	74%	73%
	20 to 24 years old	Traditional	72%	71%	67%	66%	70%	82%
	25 to 49 years old	Traditional	80%	75%	78%	80%	83%	81%
	50 + years old	Traditional	83%	81%	87%	83%	79%	75%
	Age unknown	Traditional		100%				
Retention Rate	< 20 years old	Traditional	89%	85%	86%	84%	92%	90%
	20 to 24 years old	Traditional	86%	84%	81%	85%	86%	95%
	25 to 49 years old	Traditional	91%	85%	84%	89%	87%	88%
	50 + years old	Traditional	90%	93%	91%	94%	86%	92%
	Age unknown	Traditional		100%				
Number of Enrollments	< 20 years old	Traditional	128	205	197	138	142	73
	20 to 24 years old	Traditional	105	140	140	102	83	85
	25 to 49 years old	Traditional	197	198	179	147	75	67
	50 + years old	Traditional	40	27	23	18	14	12
	Age unknown	Traditional		1	1			
Number Successful	< 20 years old	Traditional	79	136	131	99	105	53
	20 to 24 years old	Traditional	76	100	94	67	58	70
	25 to 49 years old	Traditional	157	148	139	118	62	54
	50 + years old	Traditional	33	22	20	15	11	9
	Age unknown	Traditional		1				
Number Retained	< 20 years old	Traditional	114	174	169	116	130	66
	20 to 24 years old	Traditional	90	118	113	87	71	81
	25 to 49 years old	Traditional	180	169	151	131	65	59
	50 + years old	Traditional	36	25	21	17	12	11
	Age unknown	Traditional		1				

See Addendum A for data and group definitions.

na = Not available.

Source: District Research. Based on information from Datatel Colleague. 7/30/2013 JD

**Brentwood Center**

**Level 3 Accreditation Tables - Aggregated by Measure, Demographic Group and Instruction Method**

<b>CAREER AND TECHNICAL EDUCATION COURSES BY RACE/ETHNICITY</b>								
CTE	RACE/ETHNICITY	Instr. Method	2007FA	2008FA	2009FA	2010FA	2011FA	2012FA
Success Rate	African American	Traditional	79%	54%	62%	51%	60%	57%
	Asian	Traditional	62%	69%	81%	75%	82%	82%
	Hispanic	Traditional	73%	66%	68%	74%	79%	85%
	White	Traditional	78%	77%	72%	81%	75%	79%
	Other/Undeclared	Traditional	61%	73%	75%	68%	82%	79%
Retention Rate	African American	Traditional	94%	77%	78%	79%	76%	83%
	Asian	Traditional	79%	82%	89%	81%	91%	91%
	Hispanic	Traditional	89%	86%	82%	87%	91%	99%
	White	Traditional	93%	88%	84%	90%	89%	88%
	Other/Undeclared	Traditional	83%	84%	90%	84%	95%	93%
Number of Enrollments	African American	Traditional	33	52	63	47	42	30
	Asian	Traditional	39	39	36	32	22	33
	Hispanic	Traditional	175	152	123	117	85	67
	White	Traditional	187	273	229	172	127	78
	Other/Undeclared	Traditional	36	55	89	37	38	29
Number Successful	African American	Traditional	26	28	39	24	25	17
	Asian	Traditional	24	27	29	24	18	27
	Hispanic	Traditional	128	101	84	86	67	57
	White	Traditional	145	211	165	140	95	62
	Other/Undeclared	Traditional	22	40	67	25	31	23
Number Retained	African American	Traditional	31	40	49	37	32	25
	Asian	Traditional	31	32	32	26	20	30
	Hispanic	Traditional	155	130	101	102	77	66
	White	Traditional	173	239	192	155	113	69
	Other/Undeclared	Traditional	30	46	80	31	36	27

See Addendum A for data and group definitions.

na = Not available.

Source: District Research. Based on information from Datatel Colleague. 7/30/2013 JD

**Brentwood Center**  
**Level 3 Accreditation Tables - Aggregated by Measure, Demographic Group and Instruction Method**

<b>DEGREE APPLICABLE COURSES BY GENDER</b>									
DEGREE APPL.	GENDER	Instr. Method	2007FA	2008FA	2009FA	2010FA	2011FA	2012FA	
Success Rate	Female	Traditional	71%	72%	71%	72%	77%	74%	
		Online	72%	68%	60%	76%	88%	79%	
	Male	Traditional	66%	69%	65%	68%	72%	69%	
		Online	69%	49%	62%	60%	79%	82%	
	Gender Unknown	Traditional	72%	65%	75%	73%	76%	81%	
		Online	100%	100%	80%			100%	
	Retention Rate	Female	Traditional	85%	85%	84%	83%	87%	85%
			Online	79%	81%	75%	84%	89%	87%
Male		Traditional	81%	85%	79%	83%	86%	85%	
		Online	81%	59%	78%	83%	91%	90%	
Gender Unknown		Traditional	82%	82%	85%	83%	88%	92%	
		Online	100%	100%	80%	100%		100%	
Number of Enrollments		Female	Traditional	1,635	2,038	2,044	2,076	1,663	1,630
			Online	47	79	121	119	73	87
	Male	Traditional	966	1,258	1,372	1,358	1,282	1,251	
		Online	16	41	82	78	57	51	
	Gender Unknown	Traditional	71	93	55	48	33	26	
		Online	2	4	5	2		1	
	Number Successful	Female	Traditional	1,166	1,474	1,460	1,494	1,281	1,208
			Online	34	54	73	91	64	69
Male		Traditional	633	866	894	917	928	863	
		Online	11	20	51	47	45	42	
Gender Unknown		Traditional	51	60	41	35	25	21	
		Online	2	4	4			1	
Number Retained		Female	Traditional	1,389	1,728	1,720	1,717	1,454	1,389
			Online	37	64	91	100	65	76
	Male	Traditional	780	1,065	1,087	1,123	1,106	1,068	
		Online	13	24	64	65	52	46	
	Gender Unknown	Traditional	58	76	47	40	29	24	
		Online	2	4	4	2		1	

See Addendum A for data and group definitions.

na = Not available.

Source: District Research. Based on information from Datatel Colleague. 7/30/2013 JD

**Brentwood Center**

**Level 3 Accreditation Tables - Aggregated by Measure, Demographic Group and Instruction Method**

<b>DEGREE APPLICABLE COURSES BY AGE GROUP</b>									
<b>DEGREE APPL.</b>	<b>AGE GROUP</b>	<b>Instr. Method</b>	<b>2007FA</b>	<b>2008FA</b>	<b>2009FA</b>	<b>2010FA</b>	<b>2011FA</b>	<b>2012FA</b>	
Success Rate	< 20 years old	Traditional	67%	69%	67%	71%	76%	74%	
		Online	65%	64%	62%	69%	84%	89%	
	20 to 24 years old	Traditional	67%	71%	69%	67%	71%	71%	
		Online	70%	60%	61%	70%	78%	75%	
	25 to 49 years old	Traditional	75%	75%	73%	72%	79%	69%	
		Online	77%	60%	57%	73%	92%	80%	
	50 + years old	Traditional	80%	78%	75%	80%	83%	73%	
		Online	100%	80%	82%	50%	80%	100%	
	Age unknown	Traditional		100%					
	Retention Rate	< 20 years old	Traditional	83%	86%	84%	84%	89%	89%
			Online	82%	71%	81%	87%	93%	100%
		20 to 24 years old	Traditional	81%	83%	81%	81%	84%	84%
Online			74%	76%	73%	87%	80%	85%	
25 to 49 years old		Traditional	85%	83%	80%	81%	87%	80%	
		Online	82%	77%	70%	80%	100%	83%	
50 + years old		Traditional	92%	88%	80%	88%	89%	80%	
		Online	100%	80%	82%	70%	80%	100%	
Age unknown		Traditional		100%					
Number of Enrollments		< 20 years old	Traditional	1,260	1,754	1,709	1,642	1,310	1,303
			Online	17	59	95	77	44	36
		20 to 24 years old	Traditional	735	846	969	1,037	990	975
	Online		23	25	56	53	45	59	
	25 to 49 years old	Traditional	602	715	732	743	614	563	
		Online	22	35	46	59	36	41	
	50 + years old	Traditional	75	72	60	60	64	66	
		Online	3	5	11	10	5	3	
	Age unknown	Traditional		2	1				
	Number Successful	< 20 years old	Traditional	844	1,209	1,152	1,164	998	968
			Online	11	38	59	53	37	32
		20 to 24 years old	Traditional	493	597	665	696	698	689
Online			16	15	34	37	35	44	
25 to 49 years old		Traditional	453	536	533	538	485	387	
		Online	17	21	26	43	33	33	
50 + years old		Traditional	60	56	45	48	53	48	
		Online	3	4	9	5	4	3	
Age unknown		Traditional		2					
Number Retained		< 20 years old	Traditional	1,049	1,501	1,438	1,385	1,169	1,163
			Online	14	42	77	67	41	36
		20 to 24 years old	Traditional	596	706	782	841	828	817
	Online		17	19	41	46	36	50	
	25 to 49 years old	Traditional	513	597	586	601	535	448	
		Online	18	27	32	47	36	34	
	50 + years old	Traditional	69	63	48	53	57	53	
		Online	3	4	9	7	4	3	
	Age unknown	Traditional		2					

See Addendum A for data and group definitions.

na = Not available.

Source: District Research. Based on information from Datatel Colleague. 7/30/2013 JD

Brentwood Center

Level 3 Accreditation Tables - Aggregated by Measure, Demographic Group and Instruction Method

DEGREE APPLICABLE COURSES BY RACE/ETHNICITY									
DEGREE APPL.	RACE/ETHNICITY	Instr. Method	2007FA	2008FA	2009FA	2010FA	2011FA	2012FA	
Success Rate	African American	Traditional	60%	58%	56%	58%	67%	64%	
		Online		55%	55%	44%	83%	81%	
	Asian	Traditional	70%	74%	68%	76%	81%	79%	
		Online	60%	86%	50%	67%	67%	89%	
	Hispanic	Traditional	70%	70%	68%	69%	74%	70%	
		Online	67%	61%	51%	65%	84%	83%	
	White	Traditional	71%	74%	72%	73%	77%	74%	
		Online	83%	59%	66%	75%	85%	78%	
	Other/Undeclared	Traditional	65%	67%	68%	70%	73%	70%	
		Online	67%	75%	81%	79%	82%	75%	
	Retention Rate	African American	Traditional	77%	73%	76%	76%	82%	84%
			Online	33%	82%	77%	63%	94%	88%
		Asian	Traditional	85%	84%	79%	84%	91%	88%
			Online	60%	100%	60%	78%	100%	100%
Hispanic		Traditional	84%	86%	82%	83%	87%	86%	
		Online	78%	65%	77%	86%	89%	92%	
White		Traditional	85%	86%	84%	84%	88%	85%	
		Online	89%	71%	75%	86%	90%	86%	
Other/Undeclared		Traditional	78%	83%	83%	83%	86%	83%	
		Online	67%	88%	86%	89%	82%	75%	
Number of Enrollments		African American	Traditional	189	299	271	334	293	262
			Online	3	11	22	16	18	16
		Asian	Traditional	237	261	247	276	212	262
			Online	5	7	10	9	3	9
	Hispanic	Traditional	771	976	964	972	871	964	
		Online	18	31	53	63	37	52	
	White	Traditional	1,241	1,561	1,475	1,454	1,230	1,125	
		Online	36	59	102	83	61	50	
	Other/Undeclared	Traditional	234	292	514	446	372	294	
		Online	3	16	21	28	11	12	
	Number Successful	African American	Traditional	113	172	151	195	196	167
			Online		6	12	7	15	13
		Asian	Traditional	166	192	169	210	171	208
			Online	3	6	5	6	2	8
Hispanic		Traditional	540	683	658	670	645	679	
		Online	12	19	27	41	31	43	
White		Traditional	880	1,156	1,065	1,058	952	831	
		Online	30	35	67	62	52	39	
Other/Undeclared		Traditional	151	197	352	313	270	207	
		Online	2	12	17	22	9	9	
Number Retained		African American	Traditional	146	217	205	253	240	219
			Online	1	9	17	10	17	14
		Asian	Traditional	202	220	194	232	192	231
			Online	3	7	6	7	3	9
	Hispanic	Traditional	644	841	786	805	754	826	
		Online	14	20	41	54	33	48	
	White	Traditional	1,052	1,348	1,241	1,218	1,084	960	
		Online	32	42	77	71	55	43	
	Other/Undeclared	Traditional	183	243	428	372	319	245	
		Online	2	14	18	25	9	9	

See Addendum A for data and group definitions.

na = Not available.

Source: District Research. Based on information from Datatel Colleague. 7/30/2013 JD

**Brentwood Center**

**Level 3 Accreditation Tables - Aggregated by Measure, Demographic Group and Instruction Method**

<b>PERSISTENCE BY GENDER</b>									
PERSISTENCE	GENDER	Instr. Method	2007FA	2008FA	2009FA	2010FA	2011FA	2012FA	
Fall-to-Spring Persistence Rate	Female	Traditional	65%	73%	74%	72%	74%	72%	
		Online	59%	68%	73%	69%	75%	76%	
	Male	Traditional	69%	74%	74%	73%	75%	74%	
		Online	63%	73%	71%	66%	77%	70%	
	Gender Unknown	Traditional	73%	65%	80%	81%	84%	83%	
		Online	100%	100%	80%	50%		100%	
	Fall-to-Fall Persistence Rate	Female	Traditional	50%	55%	55%	54%	55%	na
			Online	50%	54%	55%	47%	54%	na
Male		Traditional	49%	55%	53%	55%	54%	na	
		Online	38%	60%	51%	50%	53%	na	
Gender Unknown		Traditional	65%	56%	61%	55%	56%	na	
		Online	100%	75%	40%	100%		na	
Number of Unduplicated Students		Female	Traditional	1,190	1,394	1,466	1,467	1,286	1,249
			Online	46	79	121	118	72	85
	Male	Traditional	653	842	941	964	930	897	
		Online	16	40	80	76	57	50	
	Gender Unknown	Traditional	52	63	44	42	25	23	
		Online	2	4	5	2		1	
	Number of Students Continuing to Spring	Female	Traditional	776	1,011	1,079	1,061	953	896
			Online	27	54	88	81	54	65
Male		Traditional	453	621	693	705	701	660	
		Online	10	29	57	50	44	35	
Gender Unknown		Traditional	38	41	35	34	21	19	
		Online	2	4	4	1		1	
Number of Students Continuing to Fall		Female	Traditional	591	764	806	795	701	na
			Online	23	43	66	55	39	na
	Male	Traditional	321	467	496	526	505	na	
		Online	6	24	41	38	30	na	
	Gender Unknown	Traditional	34	35	27	23	14	na	
		Online	2	3	2	2		na	

See Addendum A for data and group definitions.

na = Not available.

Source: District Research. Based on information from Datatel Colleague. 7/30/2013 JD

**Brentwood Center**

**Level 3 Accreditation Tables - Aggregated by Measure, Demographic Group and Instruction Method**

		<b>PERSISTENCE BY AGE GROUP</b>							
<b>PERSISTENCE</b>	<b>AGE_GROUP</b>	<b>Instr. Method</b>	<b>2007FA</b>	<b>2008FA</b>	<b>2009FA</b>	<b>2010FA</b>	<b>2011FA</b>	<b>2012FA</b>	
Fall-to-Spring Persistence Rate	< 20 years old	Traditional	73%	80%	78%	78%	79%	80%	
		Online	76%	78%	75%	83%	68%	86%	
	20 to 24 years old	Traditional	69%	69%	74%	71%	72%	72%	
		Online	61%	72%	71%	55%	80%	75%	
	25 to 49 years old	Traditional	58%	66%	69%	67%	71%	63%	
		Online	57%	57%	70%	59%	81%	63%	
	50 + years old	Traditional	51%	48%	54%	73%	71%	61%	
		Online	0%	75%	64%	60%	80%	67%	
	Age unknown	Traditional		0%	0%				
	Fall-to-Fall Persistence Rate	< 20 years old	Traditional	59%	65%	59%	65%	62%	na
			Online	59%	69%	52%	55%	55%	na
		20 to 24 years old	Traditional	46%	47%	53%	49%	48%	na
Online			43%	52%	48%	45%	50%	na	
25 to 49 years old		Traditional	43%	47%	49%	45%	51%	na	
		Online	52%	43%	61%	46%	58%	na	
50 + years old		Traditional	25%	34%	36%	34%	46%	na	
		Online	0%	25%	55%	30%	40%	na	
Age unknown		Traditional		0%	0%			na	
Number of Unduplicated Students		< 20 years old	Traditional	777	1,066	1,080	1,055	927	883
			Online	17	59	93	76	44	35
		20 to 24 years old	Traditional	511	588	681	733	715	712
	Online		23	25	56	51	44	57	
	25 to 49 years old	Traditional	538	576	630	626	540	508	
		Online	21	35	46	59	36	41	
	50 + years old	Traditional	69	67	59	59	59	66	
		Online	3	4	11	10	5	3	
	Age unknown	Traditional		2	1				
	Number of Students Continuing to Spring	< 20 years old	Traditional	565	854	840	821	734	704
			Online	13	46	70	63	30	30
		20 to 24 years old	Traditional	354	406	503	519	514	510
Online			14	18	40	28	35	43	
25 to 49 years old		Traditional	313	381	432	417	385	321	
		Online	12	20	32	35	29	26	
50 + years old		Traditional	35	32	32	43	42	40	
		Online	-	3	7	6	4	2	
Age unknown		Traditional		-	-				
Number of Students Continuing to Fall		< 20 years old	Traditional	461	698	641	688	576	na
			Online	10	41	48	42	24	na
		20 to 24 years old	Traditional	235	276	358	356	341	na
	Online		10	13	27	23	22	na	
	25 to 49 years old	Traditional	233	269	309	280	276	na	
		Online	11	15	28	27	21	na	
	50 + years old	Traditional	17	23	21	20	27	na	
		Online	-	1	6	3	2	na	
	Age unknown	Traditional		-	-			na	

See Addendum A for data and group definitions.

na = Not available.

Source: District Research. Based on information from Datatel Colleague. 7/30/2013 JD

## Operational Definitions

### Course Success Rate

Definition: Percentage of students who receive a passing/satisfactory grade.

Numerator: A, B, C, CR, IA, IB, IC, IP, P

Denominator: A, B, C, CR, D, F, IA, IB, IC, ID, IF, IN, P, NC, NP, P, W

Excluded grade notations: MW, RD

### Course Retention Rate

Definition: Percentage of students who do not withdraw from class and who receive a valid grade.

Numerator: A, B, C, CR, D, F, I\*, NC, NP, P, RD

Denominator: A, B, C, CR, D, F, I\*, NC, NP, P, RD, W

Excluded grade notations: MW

### Persistence Rate

Definition: Percentage of students who are enrolled as of census for an initial and a subsequent term.

Numerator: The number of students who receive a grade of A, B, C, D, F, FW, I\*, P/CR, NP/NC, RD, or W in at least one class in the subsequent primary term.

Denominator: The number of students who receive a grade of A, B, C, D, F, FW, I\*, P/CR, NP/NC, RD, W in at least one class in the initial primary term.

Note: Persistence is commonly calculated for two adjacent terms, e.g., Fall 2010 to Spring 2011. This is called “term-to-term” persistence. An annual persistence rate is also popular, e.g., Fall 2010 to Fall 2011. Summer session terms are ignored. Both term-to-term and annual rates are provided for your college.

\*Includes IA, IB, IC, ID, IF, IN, and IP

## Group Definitions

### Basic Skills

CCCCO Data Element CB08. Course Basic Skills Status = B, meaning the course is coded as a basic skills course. In Colleague, COURSE\_TYPE = B. All other CB08 notations are excluded.

### Career and Technical Education (CTE)

CCCCO Data Element CB09. Course Sam Priority Code is A=Apprenticeship, or B=Advanced Occupational, or C=Clearly Occupational. In Colleague, COURSE\_LEVEL = A or B or C. All other CB09 notations are excluded.

### Degree Applicable

CCCCO Data Element CB04. Course Credit Status = D, meaning the course is coded as credit degree applicable. In Colleague, CREDIT\_TYPE = D. All other CB04 notations are excluded.

### Instruction Method

Online: CCCCCO Data Element XF01. Session Instruction Method = 71 or 72, meaning the course is coded as internet-based distance education. In Colleague, CSM\_INSTR\_METHOD = 71 or 72 or 71L or 72L or the classroom is coded CSM\_ROOM = ONLINE. All other CB04 notations are counted in the “traditional” category.

Traditional: CCCCCO Data Element XF01. Session Instruction Method. This category includes lecture 02, lab 04, tutoring 11, work experience 20, independent study 40, field experience 90, and all other distance education methods that are not internet based. Session instruction methods 71 or 72 are excluded from this category.



## Group Definitions (continued)

**Award Groups**

CCCCO Data Element SP02. Student Program Award.

Associate Degree = notations A or S, Associate of Arts (A.A.) degree or Associate of Science (A.S.) degree;

Less than 1-year certificate = notations E or B or L or O, certificates ranging 6 to fewer than 30 units;

At least 1 year but less than 4-year certificate = notations T or F, certificates ranging from 30 to 60+ units;

Noncredit awards are excluded.

**Race/Ethnicity Groups**

Asian includes, Asian, Filipino and Pacific Islander.

Other/Undeclared includes American Indian, multi-ethnicity, and unknown.

Designations of African American, Hispanic, and white have not been grouped.

For complete definitions of all data elements listed above, go to the California Community Colleges, Chancellor's Office (CCCCO) Data Element Dictionary at:

<http://extranet.cccco.edu/Divisions/TechResearchInfoSys/MIS/DED.aspx>

**Brentwood Center**

**Level 3 Accreditation Tables - Aggregated by Measure, Demographic Group and Instruction Method**

<b>PERSISTENCE BY RACE/ETHNICITY</b>									
<b>PERSISTENCE</b>	<b>RACE/ETHNICITY</b>	<b>Instr. Method</b>	<b>2007FA</b>	<b>2008FA</b>	<b>2009FA</b>	<b>2010FA</b>	<b>2011FA</b>	<b>2012FA</b>	
Fall-to-Spring Persistence Rate	African American	Traditional	59%	61%	68%	66%	72%	65%	
		Online	33%	55%	77%	63%	83%	75%	
	Asian	Traditional	73%	76%	79%	74%	79%	80%	
		Online	100%	86%	60%	56%	67%	100%	
	Hispanic	Traditional	68%	77%	74%	72%	72%	75%	
		Online	61%	74%	70%	72%	70%	76%	
	White	Traditional	66%	72%	74%	73%	75%	71%	
		Online	57%	72%	72%	60%	78%	67%	
	Other/Undeclared	Traditional	65%	75%	74%	79%	81%	73%	
		Online	67%	63%	80%	86%	73%	73%	
	Fall-to-Fall Persistence Rate	African American	Traditional	41%	47%	52%	46%	49%	na
			Online	67%	55%	59%	38%	50%	na
		Asian	Traditional	55%	53%	63%	60%	56%	na
			Online	80%	57%	40%	56%	67%	na
Hispanic		Traditional	54%	59%	54%	54%	57%	na	
		Online	56%	52%	45%	48%	68%	na	
White		Traditional	48%	54%	53%	53%	53%	na	
		Online	43%	69%	55%	43%	48%	na	
Other/Undeclared		Traditional	47%	54%	57%	63%	56%	na	
		Online	0%	25%	60%	68%	36%	na	
Number of Unduplicated Students		African American	Traditional	147	228	243	267	248	216
			Online	3	11	22	16	18	16
		Asian	Traditional	179	184	192	222	171	202
			Online	5	7	10	9	3	9
	Hispanic	Traditional	577	686	722	736	695	749	
		Online	18	31	53	60	37	51	
	White	Traditional	825	1,006	969	947	855	789	
		Online	35	58	101	83	60	49	
	Other/Undeclared	Traditional	167	195	325	301	272	213	
		Online	3	16	20	28	11	11	
	Number of Students Continuing to Spring	African American	Traditional	87	138	165	177	178	141
			Online	1	6	17	10	15	12
		Asian	Traditional	130	140	152	165	135	161
			Online	5	6	6	5	2	9
Hispanic		Traditional	393	526	536	529	503	559	
		Online	11	23	37	43	26	39	
White		Traditional	548	723	714	691	638	558	
		Online	20	42	73	50	47	33	
Other/Undeclared		Traditional	109	146	240	238	221	156	
		Online	2	10	16	24	8	8	
Number of Students Continuing to Fall		African American	Traditional	61	108	127	124	122	na
			Online	2	6	13	6	9	na
		Asian	Traditional	98	98	120	133	96	na
			Online	4	4	4	5	2	na
	Hispanic	Traditional	311	407	388	400	399	na	
		Online	10	16	24	29	25	na	
	White	Traditional	397	548	510	498	450	na	
		Online	15	40	56	36	29	na	
	Other/Undeclared	Traditional	79	105	184	189	153	na	
		Online	-	4	12	19	4	na	

See Addendum A for data and group definitions.

na = Not available.

Source: District Research. Based on information from Datatel Colleague. 7/30/2013 JD