

Welcome

Student Services Core Functions *Workshop*

Tuesday, March 10, 2008
10:00am-12:00pm

Today's Objectives

By the end of this workshop, we will have:

1. Defined "retention"
2. Shared current retention practices
3. Identified new integration strategies

Table Task #1

1. Read the *California Department of Education's* definition of retention.
2. Question: does this definition seem adequate for you? Briefly explain your answer.

Retention Definition

Student is retained in the course to end of term. A, B, C, D, CR, I grade notations
(Approved June 1996)

Definition Source: *The Research and Planning Group for California Community Colleges*

Table Task #1- Share Out

What revisions did you make to the DOE definition of retention?

Table Task #2-Map Current Retention Practices-- When? Who? What? Why?

Step 1

• What are your student's facts?

Step 2

• What issues did your student face?

Step 3

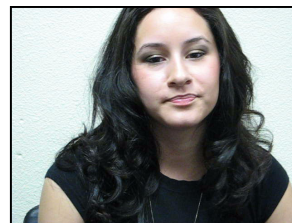
• What did your departments do to support and retain your student?

Table Task #2 Map Sample

- Scenario– student submits a Mid-semester Progress Report to EOPS with a D in English 70

<u>When</u>	<u>Who</u>	<u>What</u>	<u>Why</u>
1) At Midterm	1) EOPS	2) Scheduled counseling meeting	1) Identify challenges 2) Develop success strategy

Scenario A– Ytzali Gutierrez



Scenario B: Cynthia Coleman



Scenario C: Justin Hendricks



Table Task #2-Share Out

What did your student services department do to support and retain your student?

Retention from LMC to the State

- Refer to handout– “Core Retention Rates”
- Source: Excerpted from the “Institutional Effectiveness” report produced by The Office of Institutional Research of Los Medanos College, October 2008

Table Task #3

- Review the facts of your student.

Question:

What could your department do that *is not being done* to better support and retain your student?

About Our Student Scenarios

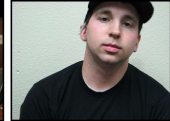
Yztali



Cynthia



Justin



Acknowledgments

Core Functions Retention Planning Team:

- Teresa Archaga, Career Development
- Dave Belman, Student Life
- Jeffrey Benford, EOPS
- Loretta Canto-Williams, Financial Aid
- Phil Gottlieb, Counseling
- Eva Monteverde, Financial Aid
- Newin Orante, Student Development

Wrap Up

- Lexicon follow-up
- Next session 3/10/09- 10a-12p

Thank you for

participating

today!