

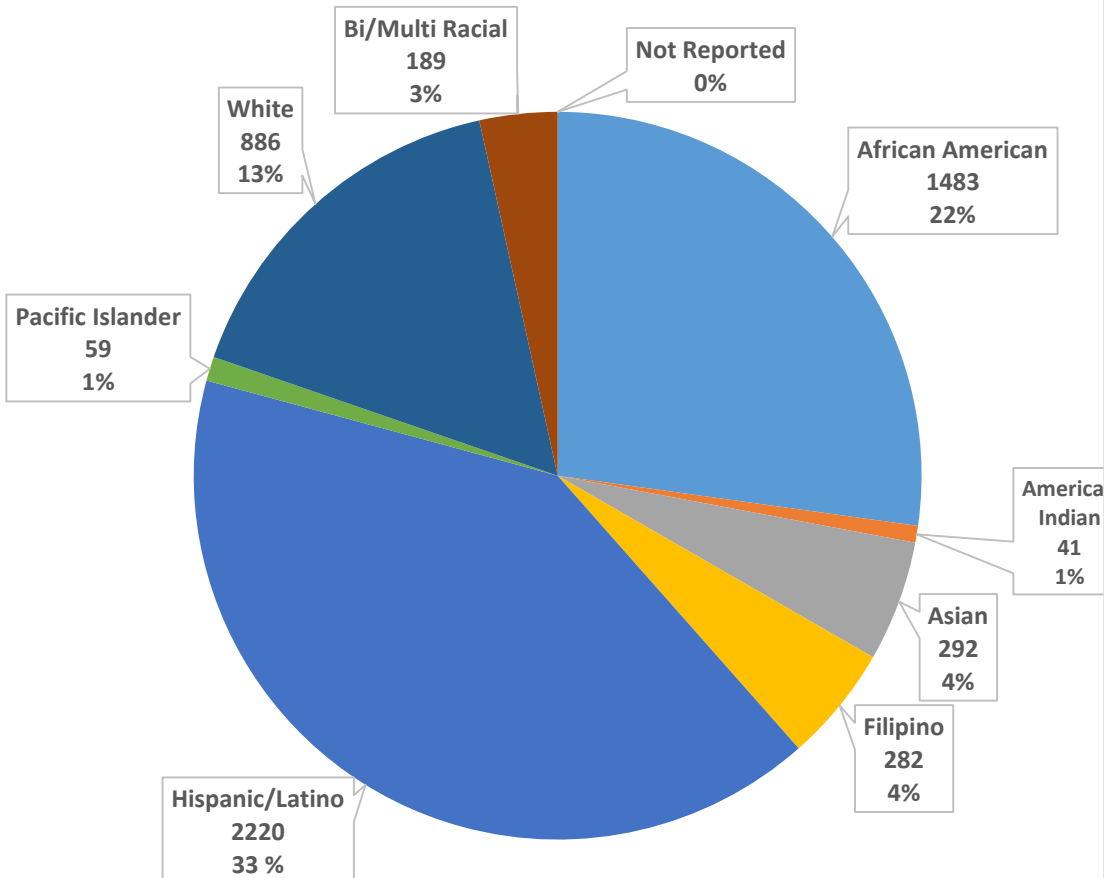
# Counselor Conference

Los Medanos College Spring 2018

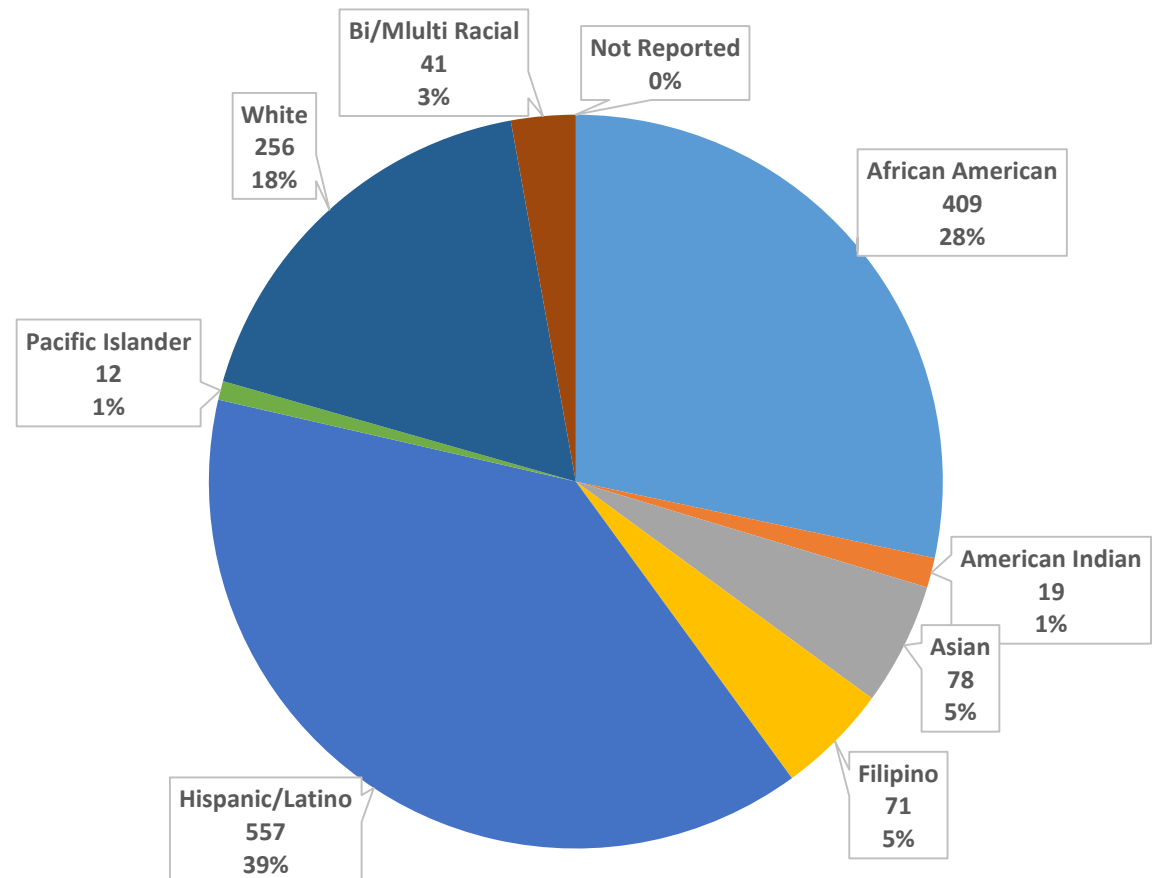
# Antioch Unified Total High School and Seniors\*

\* California Department of Education

## Antioch Unified Total Percentage of HS Students by Ethnicity



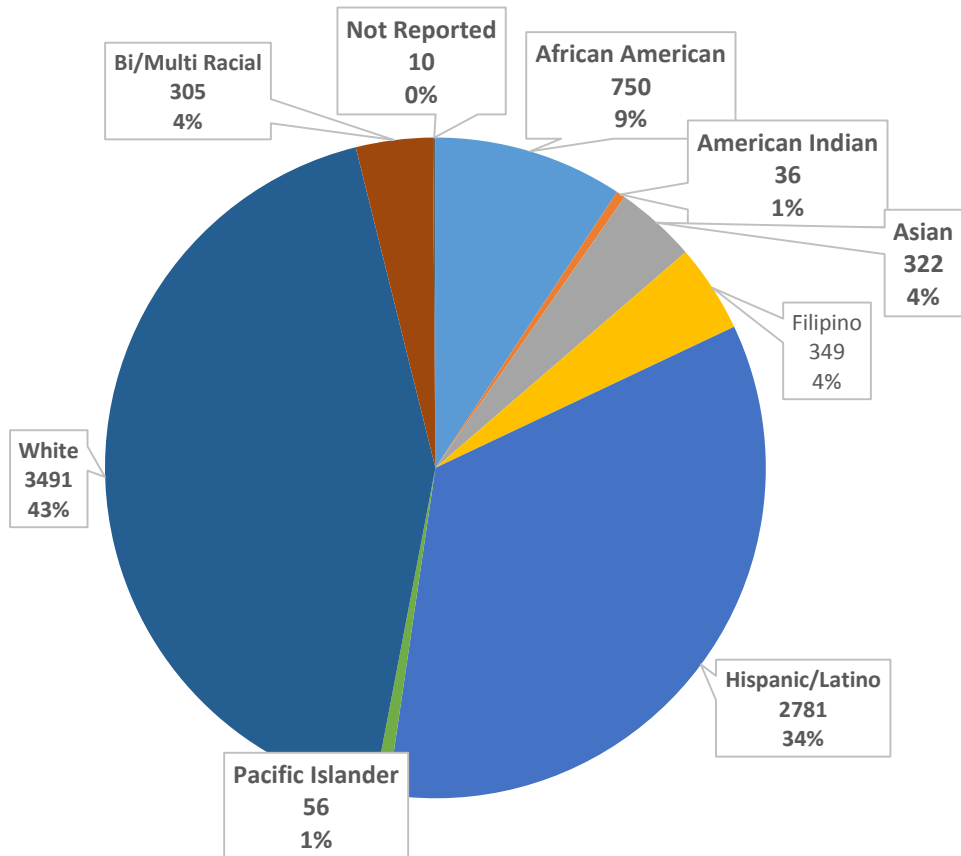
## Antioch Unified Total Percentage of 12<sup>th</sup> Graders by Ethnicity



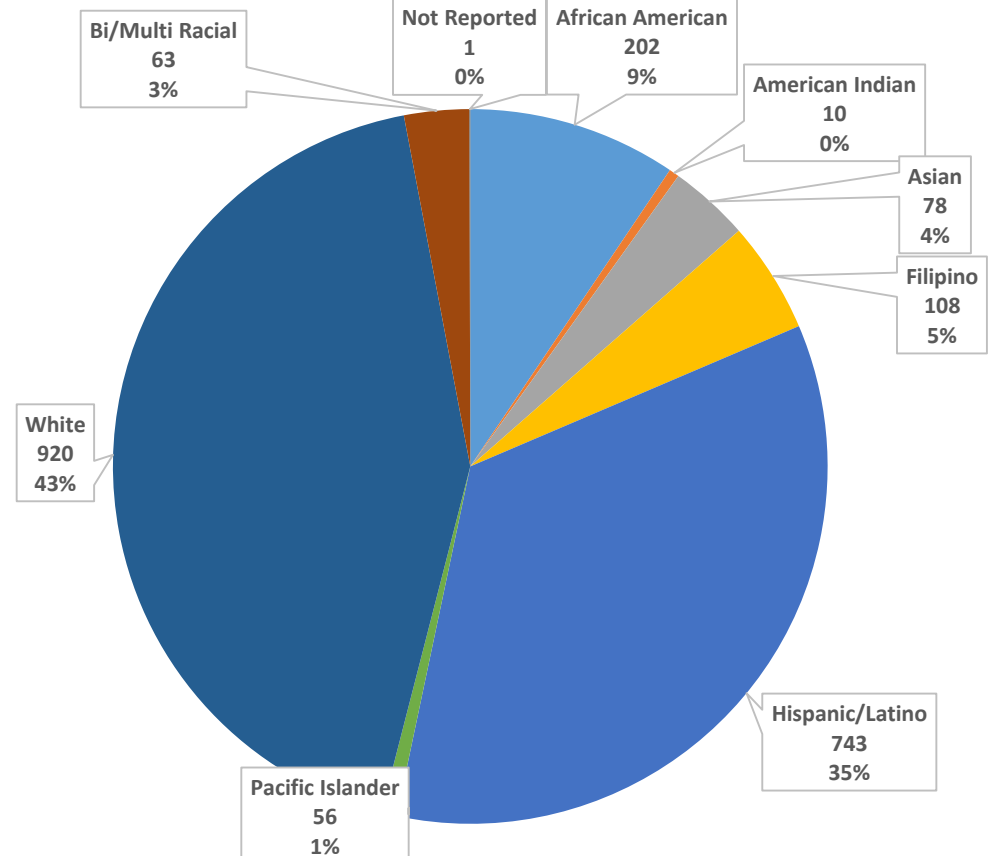
# Liberty Union District Total and 12<sup>th</sup> Grade\*

\* California Department of Education

### Liberty Union Total Percentage of Students by Background



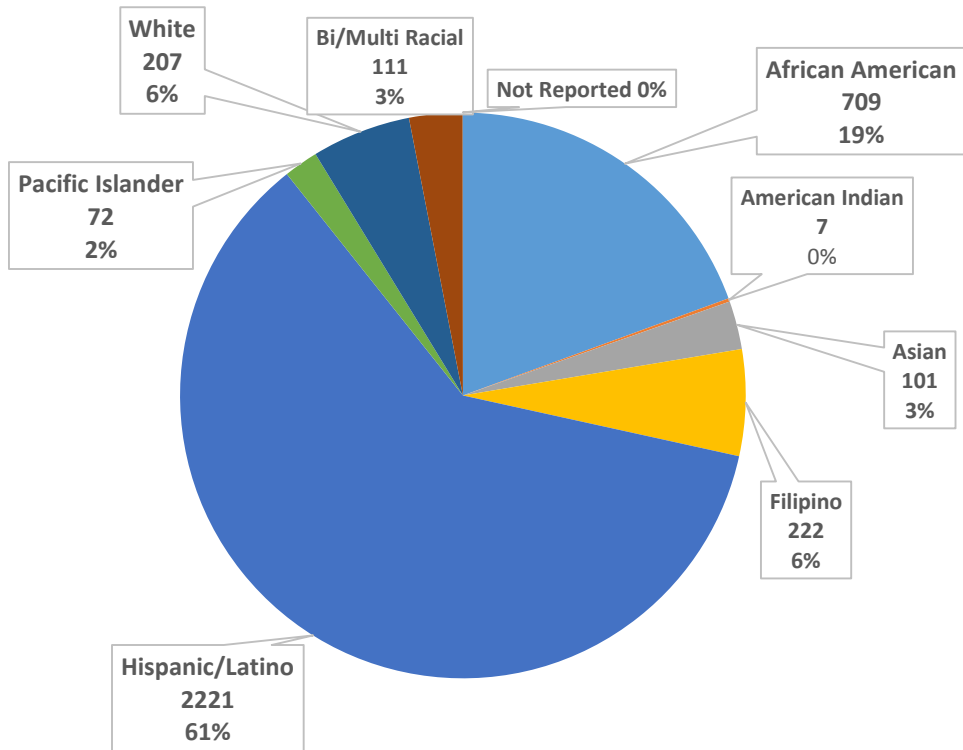
### Liberty Union Total Percentage of Seniors by Background



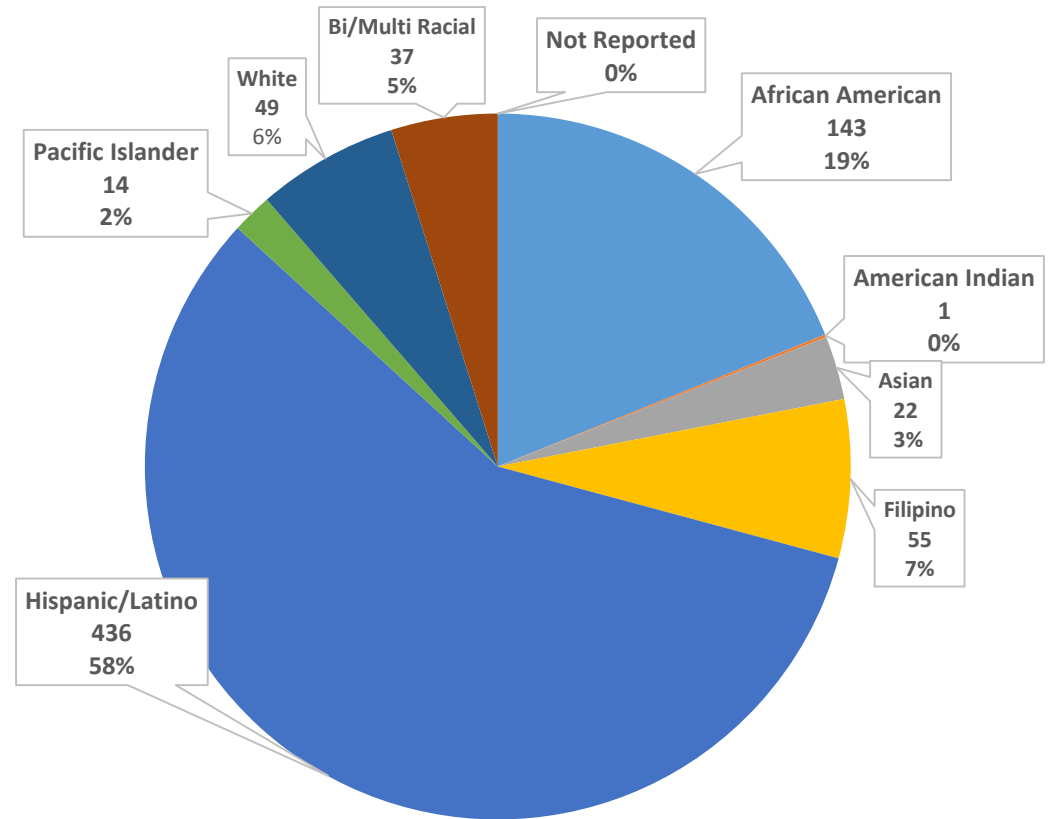
# Pittsburg Unified Total HS and 12<sup>th</sup> Graders\*

\* California Department of Education

### Pittsburg Total Percentage of HS Students by Ethnicity



### Pittsburg Unified Total Percentage of Seniors by Ethnicity



## LMC Quick Facts

### Student Profile - Fall 2016

**Unduplicated Student Head Count** 8,688

**Full Time Equivalent Students (FTES)** 3,530

#### Gender Ratio

Female 54%

Male 45%

Unknown 1%

#### Age Grouping

|              | #     | %   |
|--------------|-------|-----|
| 19 and under | 2,910 | 34% |
| 20 to 24     | 3,068 | 35% |
| 25 to 49     | 2,355 | 27% |
| 50 and over  | 355   | 4%  |

**Average Student Age** 24

**Median Student Age** 21

#### Racial/Ethnic Composition of Student Body

African American 1,268 15%

American Indian/Alaskan 17 0%

Asian 393 4%

Filipino 424 5%

Hispanic 3,569 41%

Multi-Ethnicity 683 8%

Pacific Islander 45 0%

Unknown 55 1%

White Non-Hispanic 2,234 26%

#### Unit Load

0.1 - 2.9 328 4%

3.0 - 5.9 2,004 23%

6.0 - 8.9 1,757 20%

9.0 - 11.9 1,637 19%

12.0 - 14.9 2,173 25%

15+ 789 9%

Non-Credit 0 0%

**Average Cumulative GPA** 2.73

#### Educational Objective

Long-Term Goal<sup>1</sup> 82%

Short-Term Goal<sup>2</sup> 15%

Undecided/Unknown 3%

#### Course Outcomes

Success Rate 73%

Retention Rate 86%

#### Awards (2015-16)

AA/AS Degrees 1,219

Certificates 954

Total Awards 2,173

#### Transfer to 4-Year Public Institutions (2015-16)

University of California 100

California State University 412

In-state private or out-of-state Not available

Total Transfers 512

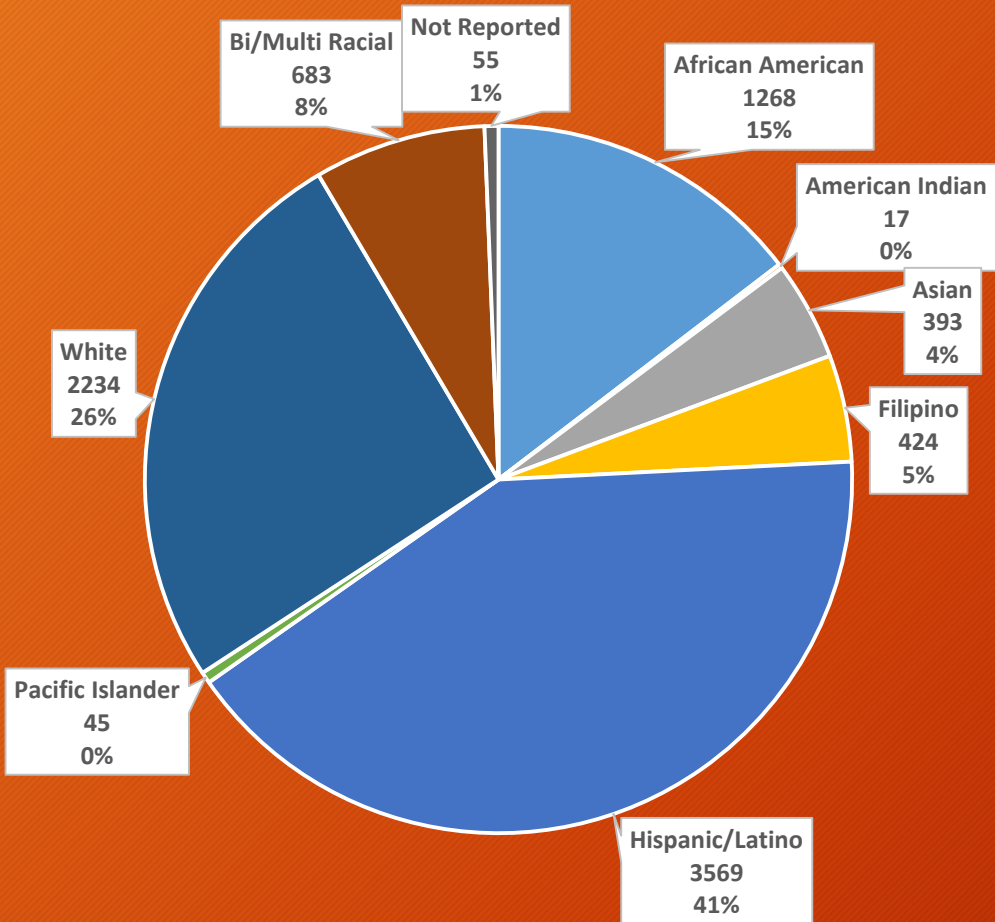
Los Medanos College Feeder High School  
2016 Graduates Enrolled at LMC

| District Top Feeder High Schools         | Number of 2016 Graduates Enrolled at LMC |
|--|--|
| <b>Antioch Unified School District</b>   | <b>527</b>                               |
| Antioch High                             | 140                                      |
| Deer Valley High                         | 295                                      |
| Dozier-Libbey Medical High               | 56                                       |
| Live Oak High                            | 14                                       |
| Prospects High                           | 22                                       |
|  |  |
| <b>Liberty Union School District</b>     | <b>708</b>                               |
| Freedom High                             | 254                                      |
| Heritage High                            | 224                                      |
| Independence High                        | 27                                       |
| Liberty High                             | 203                                      |
|  |  |
| <b>Pittsburg Unified School District</b> | <b>281</b>                               |
| Pittsburg High                           | 277                                      |
| Black Diamond High                       | 4  |

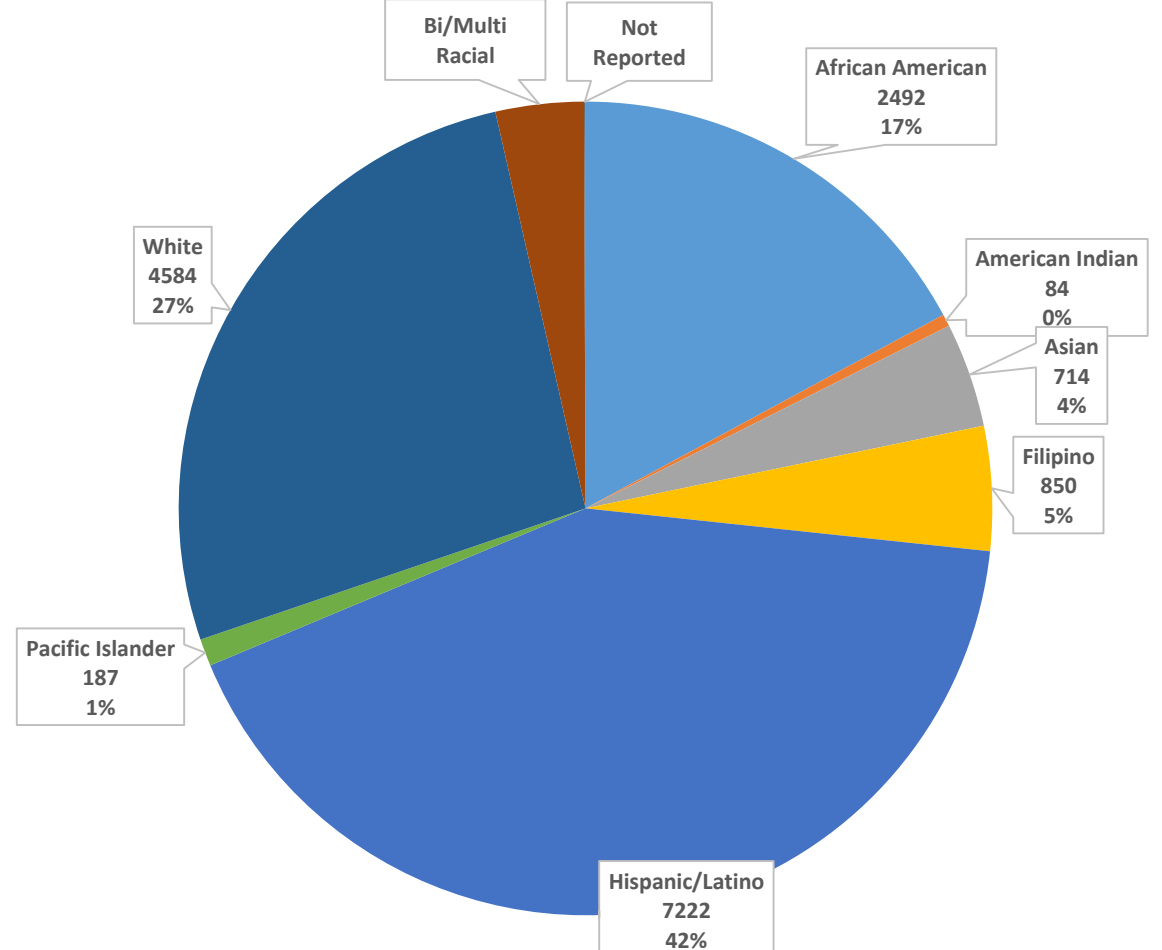
# Ethnic Distribution: LMC Students and Total East County HS Students\*

\* California Department of Education and CCCCD

### LMC Total Percentage of Students by Ethnicity



### East County Total Percentage of HS Students by Ethnicity







# Fall 2017 Average Accepted GPA

|                             | UC Berkeley                        | UC Davis                           | UCLA                               | UC Santa Cruz                      |
|-----------------------------|------------------------------------|------------------------------------|------------------------------------|------------------------------------|
| Los Medanos                 | <b>3.65</b><br>28% Acceptance Rate | <b>3.45</b><br>70% Acceptance Rate | <b>3.69</b><br>32% Acceptance Rate | <b>3.34</b><br>60% Acceptance Rate |
| Average, Local High Schools | <b>4.17</b>                        | <b>4.12</b>                        | <b>4.22</b>                        | <b>3.89</b>                        |

# Los Medanos Transfer is Growing...

Hispanic/Latinx  
Student Transfer

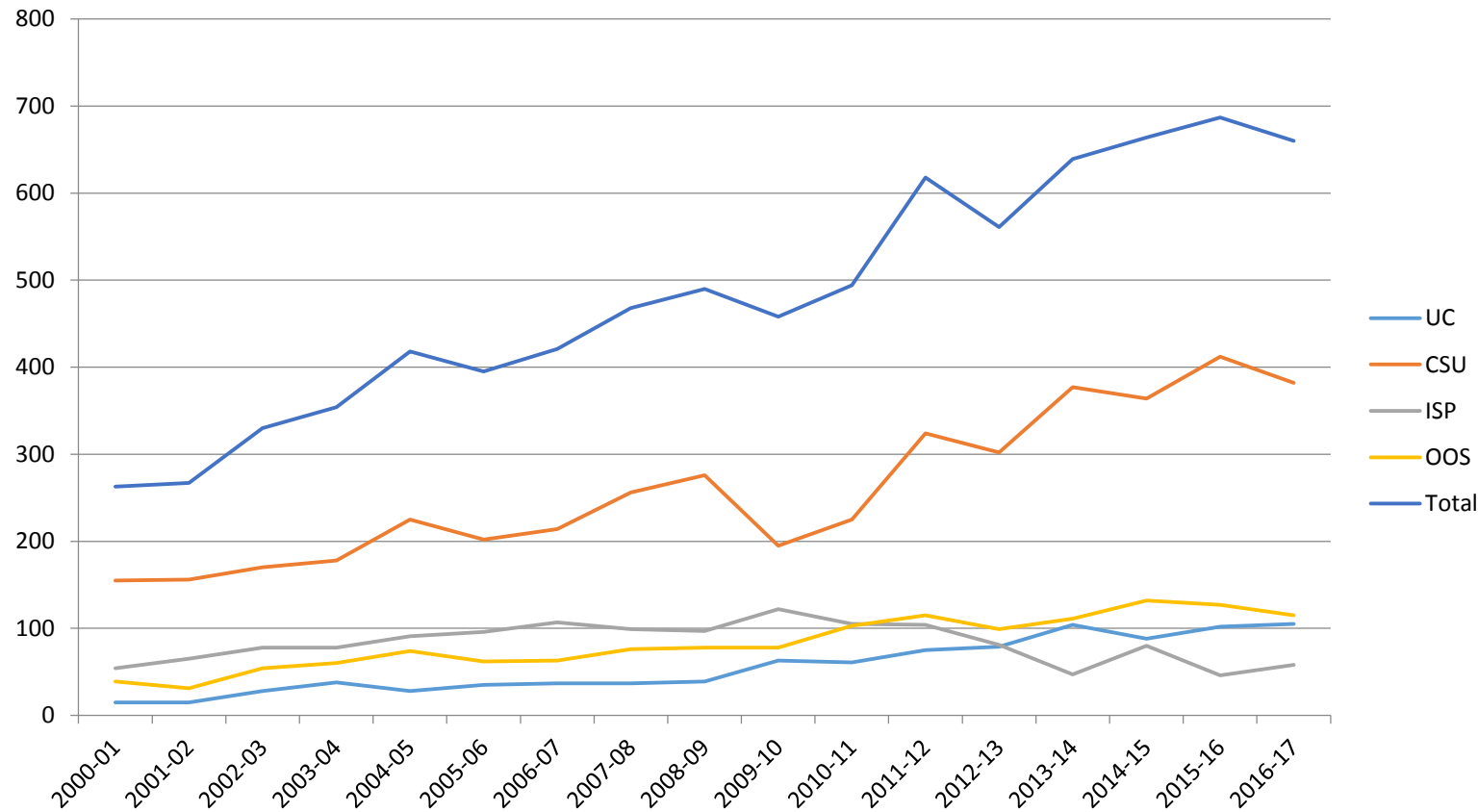
- 42% increase in transfer to CSU & UC since 2012

Black/African  
American  
Student Transfer

- 38% increase in transfer to CSU & UC since 2012

# Los Medanos Transfer is Growing...

**LMC Annual Transfers  
2000-01 to Present**



**Change in Transfer**  
73% increase in last  
10 years