



# CONTRA COSTA COMMUNITY COLLEGE DISTRICT

Facilities Master Planning

**AUGUST 16, 2023**

---

**steinberg  
hart**

# AGENDA

- 01** Process + Engagement
- 02** Planning Foundation
- 03** Initial Analysis
- 04** Next Steps
- 05** We Want to Hear from You!



# INTRODUCTIONS

Meet the Team



**Rob**

Principal in Charge



**Nicole**

Senior Planner



**Benedetta**

Senior Planner



**Jessa**

Planner

## COMPREHENSIVE EXPERTISE

Outreach

Campus Assessments

Sustainability

Landscape

Cost Estimating

Pedagogy & Technology

Space Utilization

# INTRODUCTIONS

Meet the Team



**Rob**

Principal in Charge



**Nicole**

Senior Planner



**Benedetta**

Senior Planner



**Jessa**

Planner

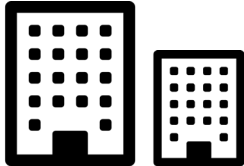
## COMPREHENSIVE EXPERTISE

- Outreach
- Campus Assessments
- Sustainability
- Landscape
- Cost Estimating
- Pedagogy & Technology
- Space Utilization

# OUR TASK



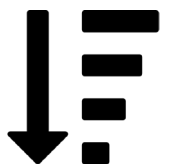
UNDERSTAND THE **WHY**, NOT JUST THE WHAT



TRANSLATE THE STRATEGIC & EDUCATIONAL PLANS INTO A **PHYSICAL PLAN**



**SUPPORT** THE CAMPUS'S EVER-CHANGING NEEDS



ESTABLISH A **FRAMEWORK** FOR IMPLEMENTATION THAT SUPPORTS DAY-TO-DAY DECISIONS



**MAXIMIZE** STATE FUNDING

# PROCESS & ENGAGEMENT

Stakeholder Groups

## STEERING COMMITTEE

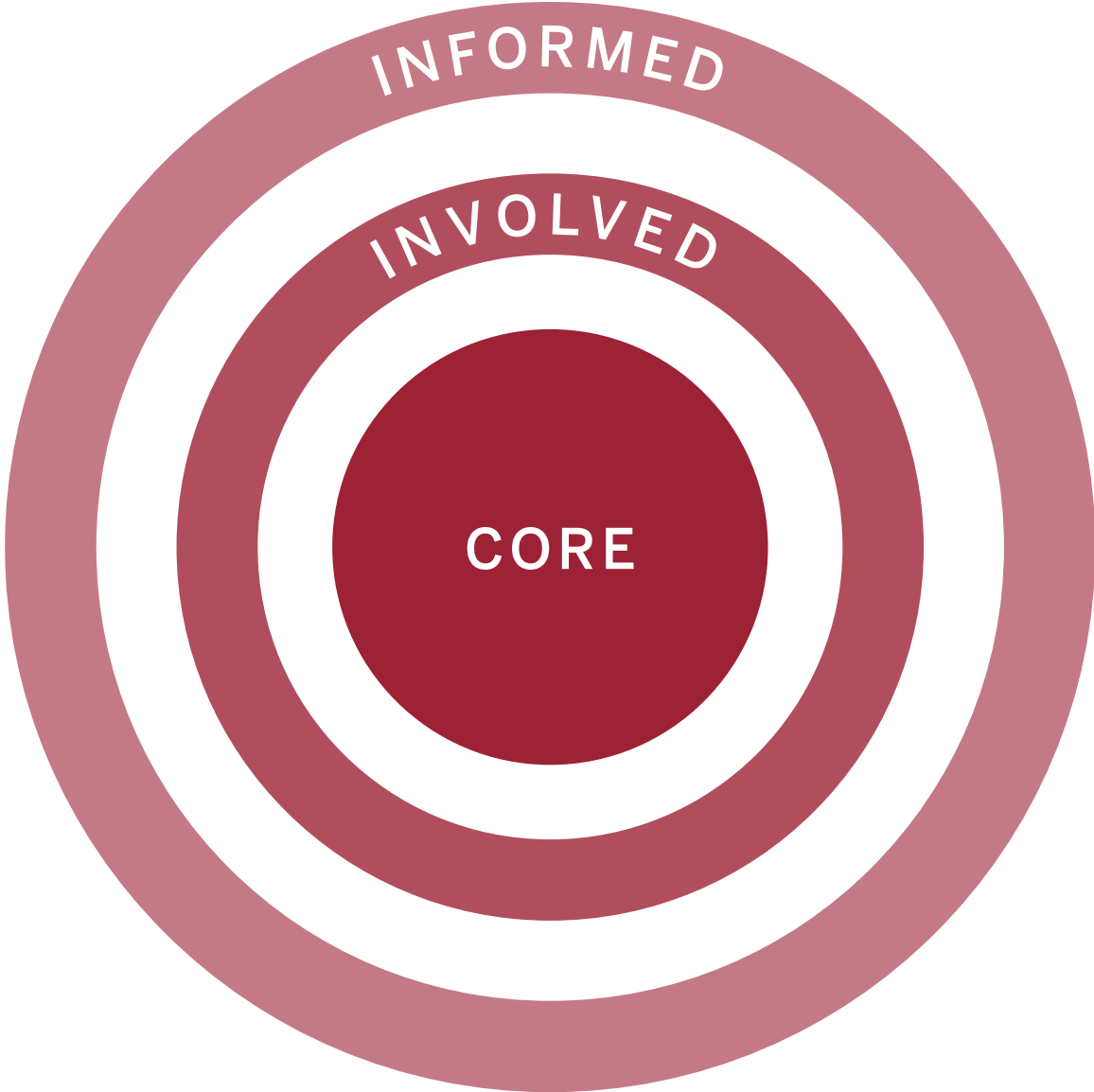
- President’s Cabinet
- District Leadership

## INVOLVED

- Presidents Council
- Academic Senate
- Classified Senate
- Associated Students

## INFORMED

- Campus Community
- External Community
- Other Additinal Stakeholder Groups



Governing Board will be providing feedback and approval

# PROCESS & ENGAGEMENT

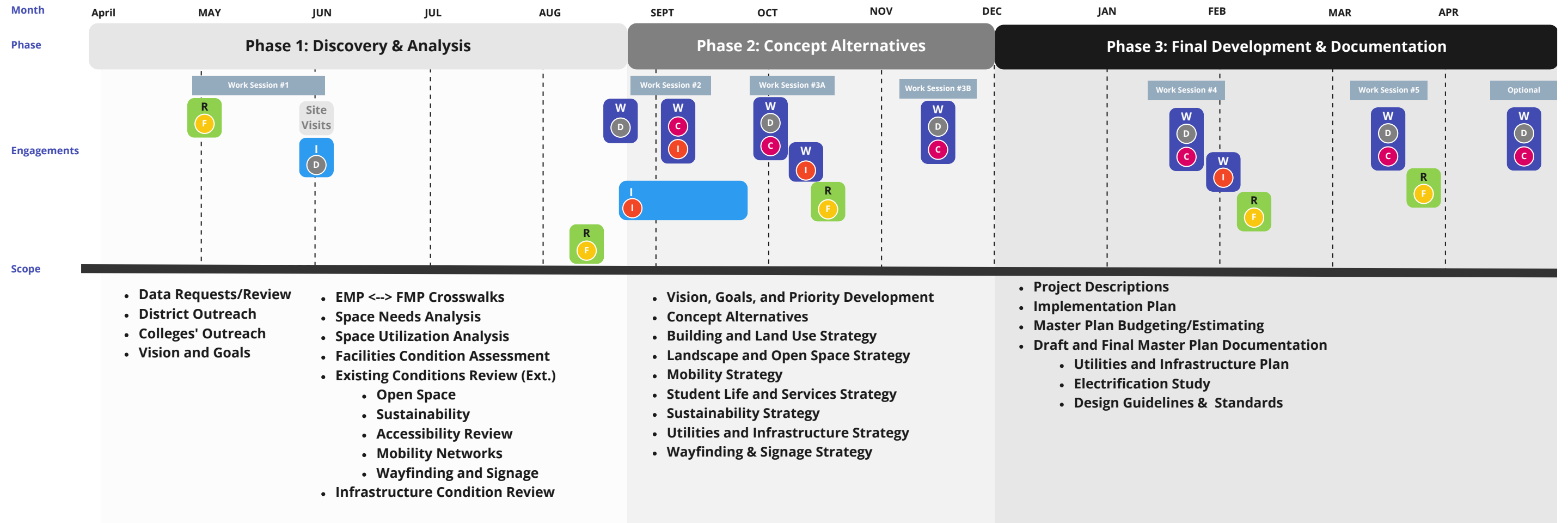
## Stakeholder Groups

	Stakeholder	Meeting Day	Meeting Time	Interview Schedule
Committee	Career Technical Education	2nd Tuesday	1:00 PM	12-Sep
	Curriculum	Sep/6,20 Oct/4,18 Nov/1,15,29	2:30 - 4:30 pm	6-Sep
	Distance Education	1st & 3rd Monday	2:15 - 3:00 pm	18-Sep
	Equal Employment Opportunity (EEO)	2nd Tuesday	2:30 - 4:30 pm	12-Sep
	General Education	2nd & 4th Wednesday	1:00 - 2:25 pm	13-Sep
	Institutional Development for Equity & Access (IDEA)	3rd Thursday	2:30 - 3:50 pm	8/24 or 9/21
	Planning	1st Thursday	1:00 - 3:00 pm	7-Sep
	Professional Development (PDAC)	4th Thursday	2:00 - 3:00 pm	31-Aug
	Safety & Security	3rd Thursday	3:00 - 4:30 pm	8/24 or 9/21
	Shared Governance Council	2nd & 4th Wednesdays	2:00 - 4:00 pm	13-Sep
	Strategic Enrollment Management	1st & 3rd Tuesday	3:30 - 5:00 pm	8/22 or 9/5
	Sustainability	3rd Wednesday	2:00 - 3:00 pm	8/23 or 9/20
	Teaching and Learning	2nd Tuesday	2:30 - 3:55 pm	12-Sep
	Technology Advisory Group (TAG)	4th Tuesday	2:00 PM	29-Aug
Senate	Academic Senate	Mon - Aug 28, 2023 Mon - Sep 11, 2023 Mon - Sep 25, 2023 Mon - Oct 9, 2023 - No Meeting Mon - Oct 16, 2023 Mon - Oct 30, 2023 Mon - Nov 13, 2023 Mon - Nov 27, 2023	3:00 - 4:30 pm	Sept 11, October 16, Nov 27
	Classified Senate	usually same as Academic Senate (above)		Sept 11, October 16, Nov 28
	LMCAS			

	Stakeholder	Meeting Day	Meeting Time	Interview Schedule
Other Groups	Athletics			
	Basic Needs Center			
	Brentwood (meeting at Brentwood...and need to identify specific individuals)			
	Building & Grounds			
	Child Development Center			
	Counseling			
	Career Technical Education			
	College Complex - Instructional			
	College complex - Operational			
	Information Technology & Systems			
	Learning Communities			
	Library			
	Math			
	Nursing			
	Performing Arts Center			
	Police Services			
	Sciences			
	SSLT			
Student Services (as a division)				
Student Groups			August 16th, AM	
Tutoring				
Veterans				

# PROCESS & ENGAGEMENT

## Timeline



### KEY

#### Engagement Groups

- D District Leadership
- C Core Group / Steering Committee
- I Involved / Senates & SBG
- F Informed / College Assembly

#### Engagement Types

- W Workshop
- I Interview
- R Road Show
- S Survey

**Workshop:** Virtual or in person presentation of process intended to elicit feedback. Occur every 4-6 weeks throughout the project. Focused on working through the design and planning process and garnering feedback from key stakeholders at important milestones of the project.

**Interview:** Virtual or in person interview for the purpose of analysis and assessment of current conditions. A series of one-on-one or group interviews that help us understand how the campuses and its facilities are being used today, and areas for change or improvement.

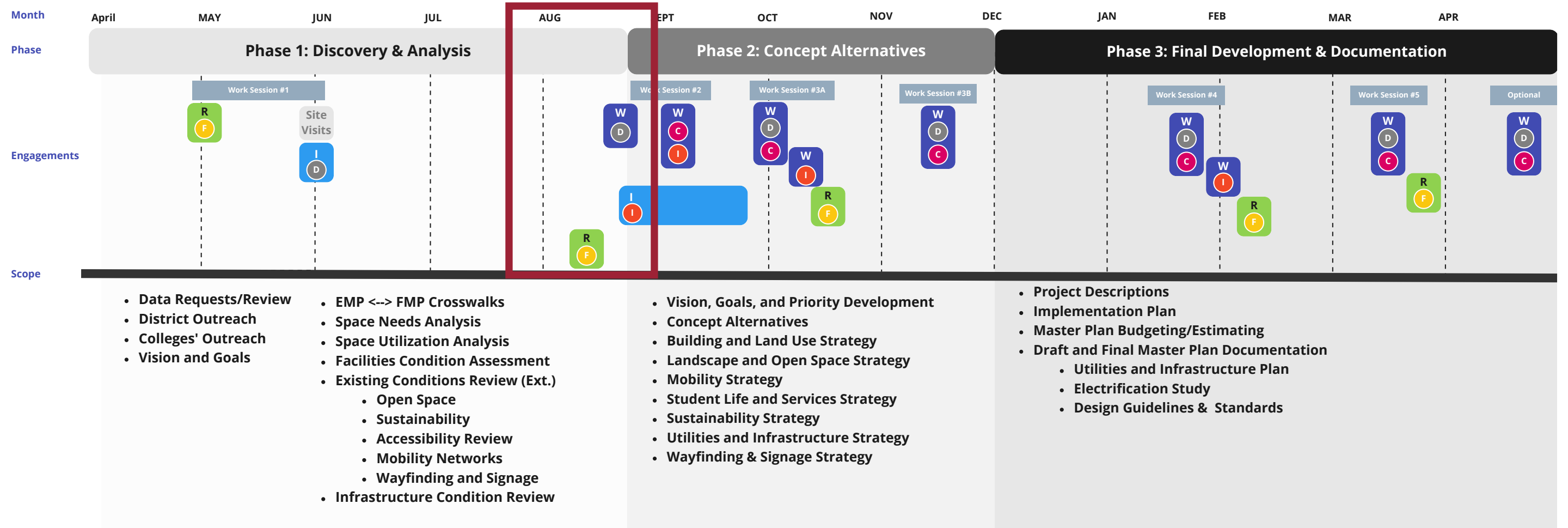
**Road Show:** Virtual or in person presentation to inform the 4CD community. A series of presentations to the campus or greater community for each College, intended to give project updates and solicit feedback.

**Survey:** Online survey and questionnaires to collect information from larger groups. Indented to fill in information from stakeholders that would otherwise be challenging to meet with one-on-one.



# PROCESS & ENGAGEMENT

## Timeline



### KEY

Engagement Groups	Engagement Types
<b>D</b> District Leadership	<b>W</b> Workshop
<b>C</b> Core Group / Steering Committee	<b>I</b> Interview
<b>I</b> Involved / Senates & SBG	<b>R</b> Road Show
<b>F</b> Informed / College Assembly	<b>S</b> Survey

**Workshop:** Virtual or in person presentation of process intended to elicit feedback. Occur every 4-6 weeks throughout the project. Focused on working through the design and planning process and garnering feedback from key stakeholders at important milestones of the project.

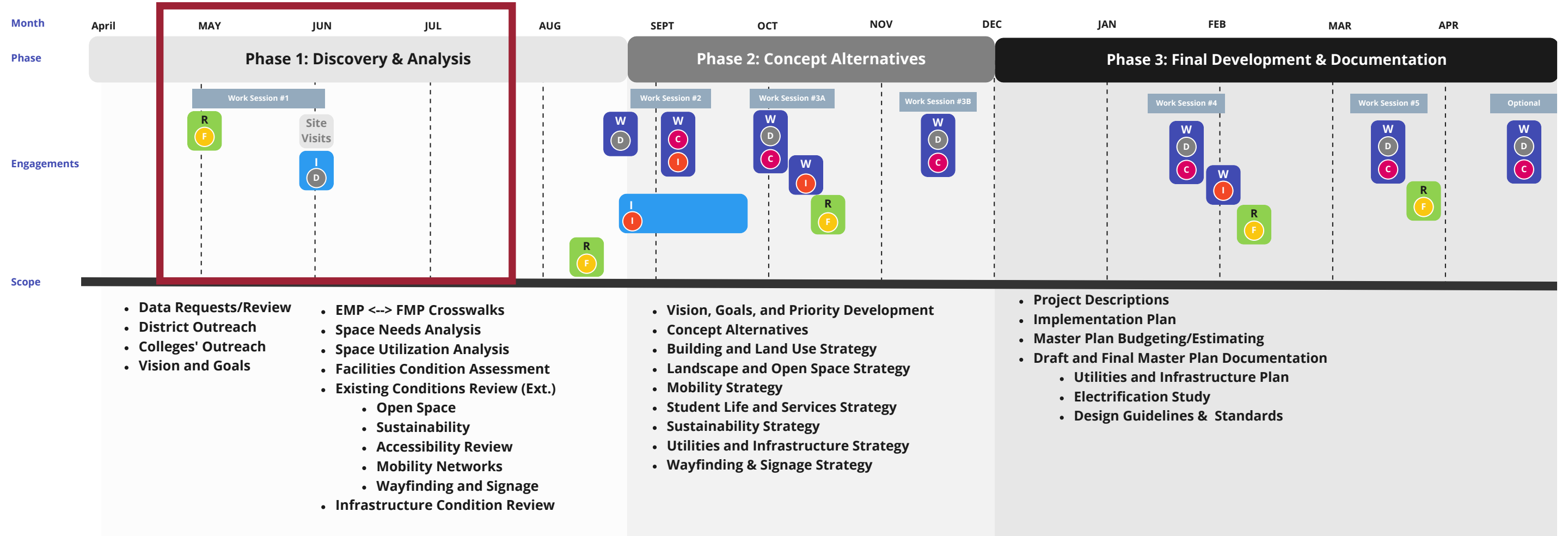
**Interview:** Virtual or in person interview for the purpose of analysis and assessment of current conditions. A series of one-on-one or group interviews that help us understand how the campuses and its facilities are being used today, and areas for change or improvement.

**Road Show:** Virtual or in person presentation to inform the 4CD community. A series of presentations to the campus or greater community for each College, intended to give project updates and solicit feedback.

**Survey:** Online survey and questionnaires to collect information from larger groups. Indented to fill in information from stakeholders that would otherwise be challenging to meet with one-on-one.

# PROCESS & ENGAGEMENT

## Timeline



### KEY

#### Engagement Groups

- D** District Leadership
- C** Core Group / Steering Committee
- I** Involved / Senates & SBG
- F** Informed / College Assembly

#### Engagement Types

- W** Workshop
- I** Interview
- R** Road Show
- S** Survey

**Workshop:** Virtual or in person presentation of process intended to elicit feedback. Occur every 4-6 weeks throughout the project. Focused on working through the design and planning process and garnering feedback from key stakeholders at important milestones of the project.

**Interview:** Virtual or in person interview for the purpose of analysis and assessment of current conditions. A series of one-on-one or group interviews that help us understand how the campuses and its facilities are being used today, and areas for change or improvement.

**Road Show:** Virtual or in person presentation to inform the 4CD community. A series of presentations to the campus or greater community for each College, intended to give project updates and solicit feedback.

**Survey:** Online survey and questionnaires to collect information from larger groups. Indented to fill in information from stakeholders that would otherwise be challenging to meet with one-on-one.

# PROCESS & ENGAGEMENT

Discovery & Analysis Phase

1

## PROJECT OVERVIEW

2

## CAMPUS TOURS & INTERVIEWS

3

## GATHERING DATA & RESEARCH



### CONTRA COSTA COMMUNITY COLLEGE DISTRICT

Facilities Master Planning

MONDAY MAY 1, 2023



**FUSION** Home Planning Assessment Space Inventory Project Scheduled Maintenance Admin

Assessment Schedule for 2023 - 2028 [Change cycle](#)

Contra Costa College | Diablo Valley College | Los Medanos College | Contra Costa District Office\* | San Ramon Center | Brentwood Education C

Assessment Schedule Deficiencies

Deficiency List     Out of total 257

Updated	Building	Room No	Major Class	Deficiency	Assessor Notes	District Notes	Estimated Amount	Additional Cost	Repair Cost	Commands
4/2020	CHEMICAL STORAGE BLDG.		Ceiling Suspension Systems	(L1) Ceilings beyond expected useful life			\$64,660.80	\$65,713.70	\$130,374.50	<input type="button" value="Edit"/> <input type="button" value="Check"/> <input type="button" value="Manage"/>
4/2020	CHEMICAL STORAGE BLDG.		Detection Systems	(L1) Detection system Past useful Life			\$22,526.40	\$12,916.76	\$35,443.16	<input type="button" value="Edit"/> <input type="button" value="Check"/> <input type="button" value="Manage"/>
4/2020	CHEMICAL STORAGE BLDG.		Flooring	(L1) Flooring beyond expected useful life			\$40,857.60	\$23,427.97	\$64,285.57	<input type="button" value="Edit"/> <input type="button" value="Check"/> <input type="button" value="Manage"/>
4/2020	CHEMICAL STORAGE BLDG.		Walls And Ceilings, Interior	(L1) Walls and finish beyond useful life			\$44,916.00	\$25,755.08	\$70,671.08	<input type="button" value="Edit"/> <input type="button" value="Check"/> <input type="button" value="Manage"/>
4/2020	CHEMICAL STORAGE BLDG.		Roof Coatings	(L1) Roofing beyond expected useful life			\$122,755.20	\$70,388.51	\$193,143.71	<input type="button" value="Edit"/> <input type="button" value="Check"/> <input type="button" value="Manage"/>
4/2020	CHILD DEVELOPMENT CENTER		Walls And Ceilings, Interior	(L1) Walls and finish beyond useful life			\$105,444.08	\$60,462.22	\$165,906.30	<input type="button" value="Edit"/> <input type="button" value="Check"/> <input type="button" value="Manage"/>
4/2020	CUSTODIAL OFFICES		Detection Systems	(L1) Special Electrical sys beyond exp useful life			\$52,116.48	\$20,245.61	\$72,362.09	<input type="button" value="Edit"/> <input type="button" value="Check"/> <input type="button" value="Manage"/>
4/2020	CUSTODIAL OFFICES		Flooring	(L1) Flooring beyond expected useful life			\$5,595.84	\$3,208.69	\$8,804.53	<input type="button" value="Edit"/> <input type="button" value="Check"/> <input type="button" value="Manage"/>
4/2020	CUSTODIAL OFFICES		Roof Coatings	(L1) Roofing beyond expected useful life			\$40,089.60	\$15,573.54	\$55,663.14	<input type="button" value="Edit"/> <input type="button" value="Check"/> <input type="button" value="Manage"/>

# PLANNING FOUNDATION

---

02

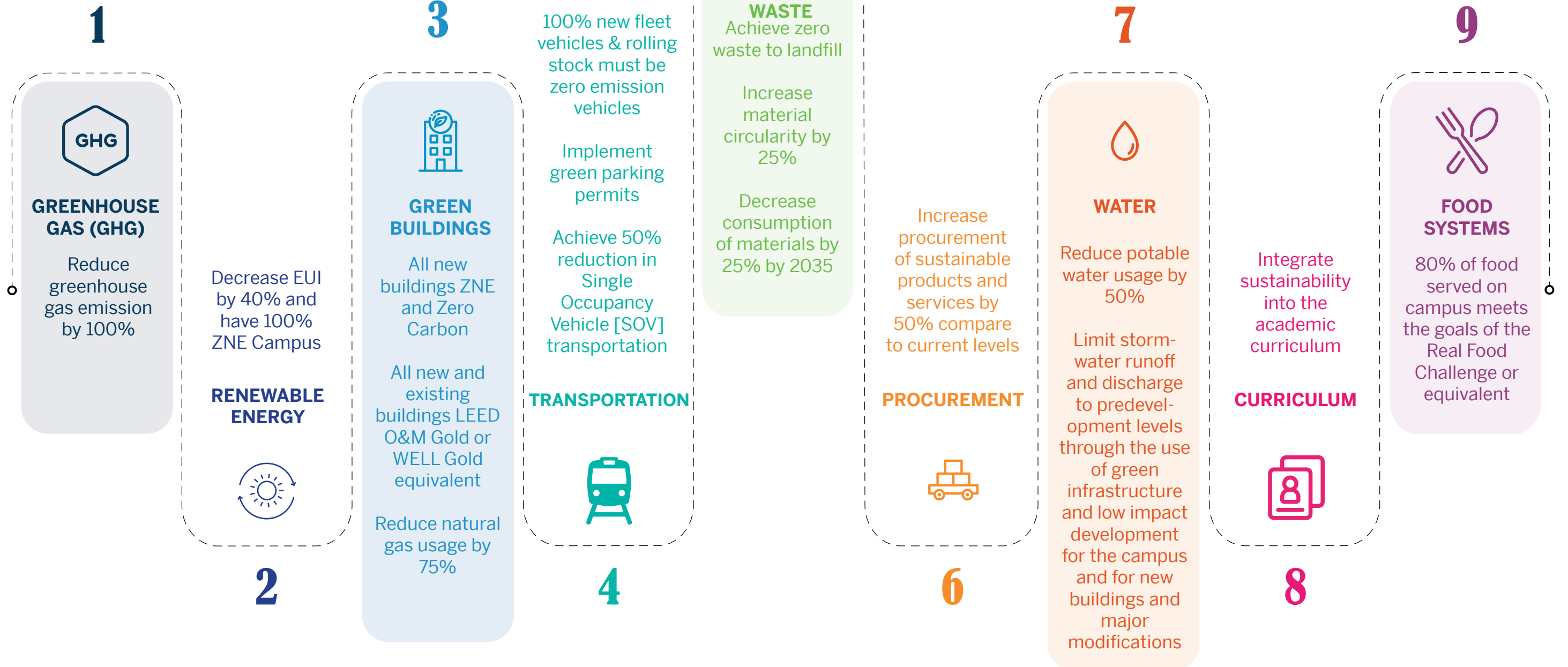
# PLANNING FOUNDATION

District Strategic Directions 2020-2050

1. IMPROVE **STUDENT LEARNING** AND COMPLETION ACROSS DISTRICT COLLEGES
2. DECREASE **EQUITY GAPS** FOR ALL STUDENTS
3. ADVANCE EXISTING **COMMUNITY PARTNERSHIPS** AND CREATE NEW EDUCATIONAL COLLABORATIONS TO **STRENGTHEN STUDENT PATHWAYS**
4. CULTIVATE A CULTURE OF **ENGAGEMENT** THROUGHOUT THE DISTRICT
5. RESPONSIBLY, EFFECTIVELY, AND SUSTAINABLY **STEWARD DISTRICT RESOURCES**

# PLANNING FOUNDATION

2035 Disitrcwide Updated Sustainability Goals



# PLANNING FOUNDATION

LMC Vision and Mission

## Our Mission

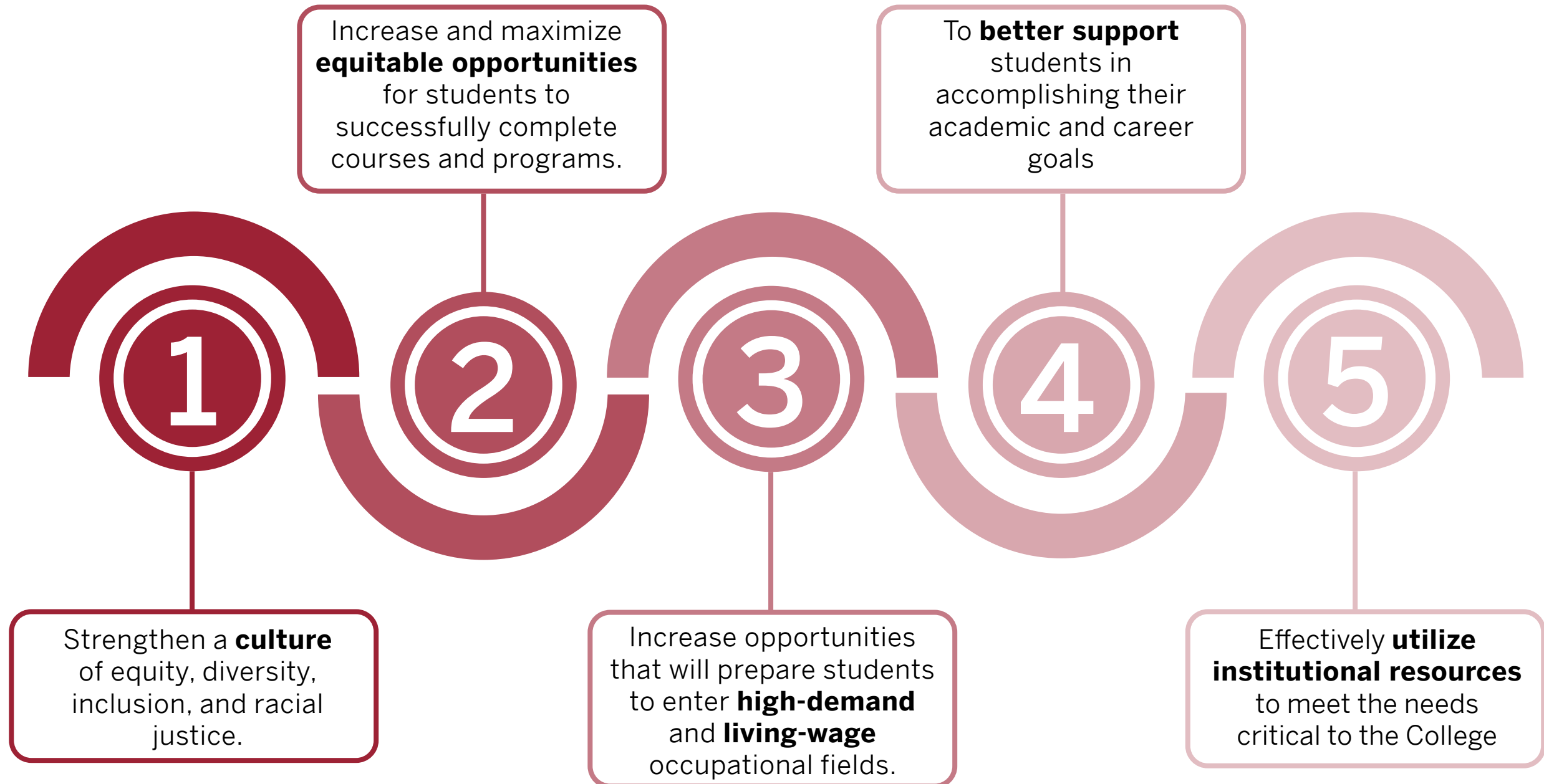
Los Medanos College provides our community with equitable access to educational opportunities and support services that empower students to achieve their academic and career goals in a diverse and inclusive learning environment.

## Our Vision

Los Medanos College will be a leader in providing innovative, dynamic, and equitable educational experiences, support services, and career opportunities that empower students and transform our community.

# PLANNING FOUNDATION

LMC Educational Plan | Goals



\*Source: LMC Educational Master Plan | 2020-2025



# INITIAL ANALYSIS






---

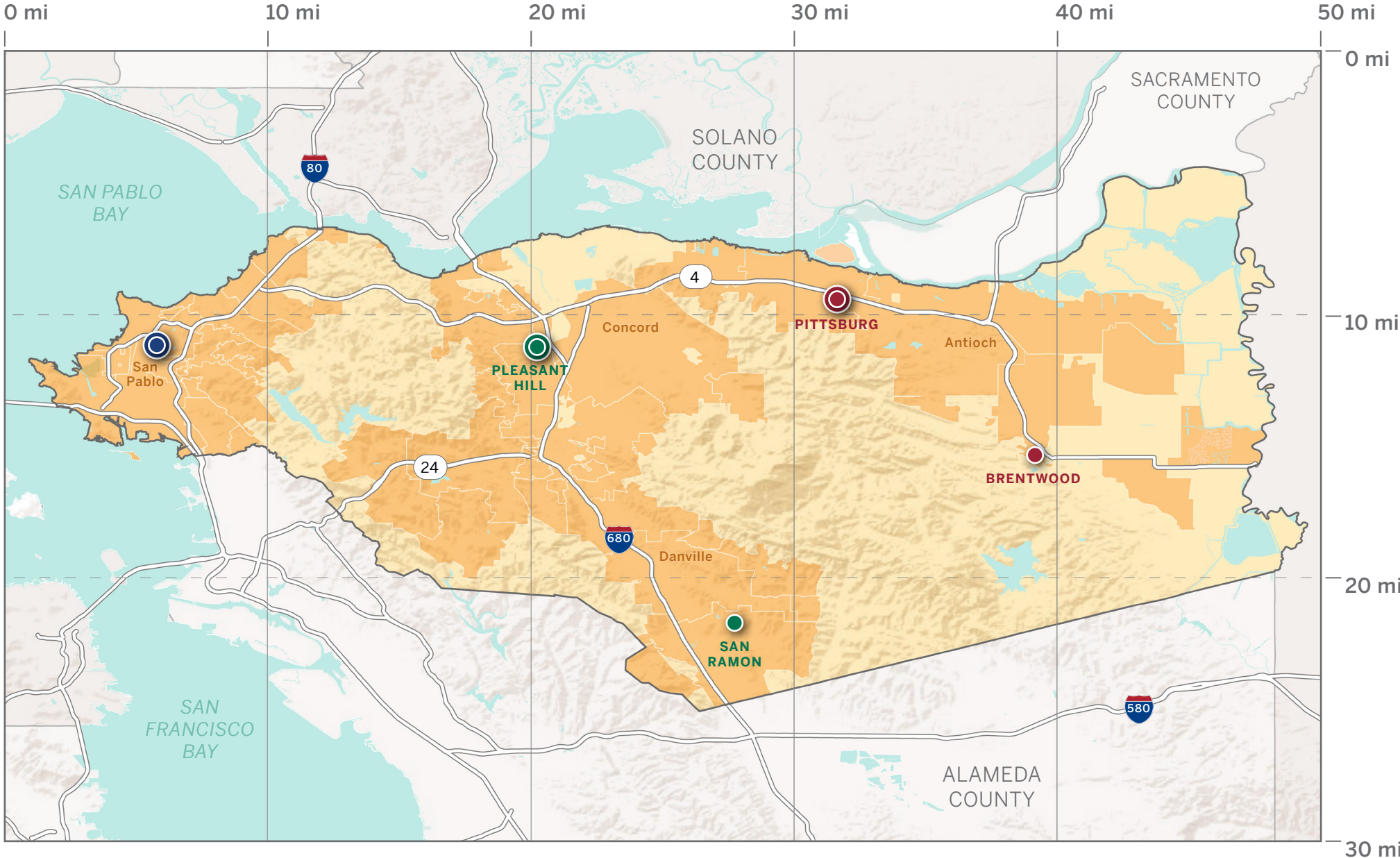
03

# REGIONAL CONTEXT

## District Map

### LEGEND






-  Contra Costa County
-  City Limits
-  Contra Costa College
-  Diablo Valley College
-  Los Medanos College

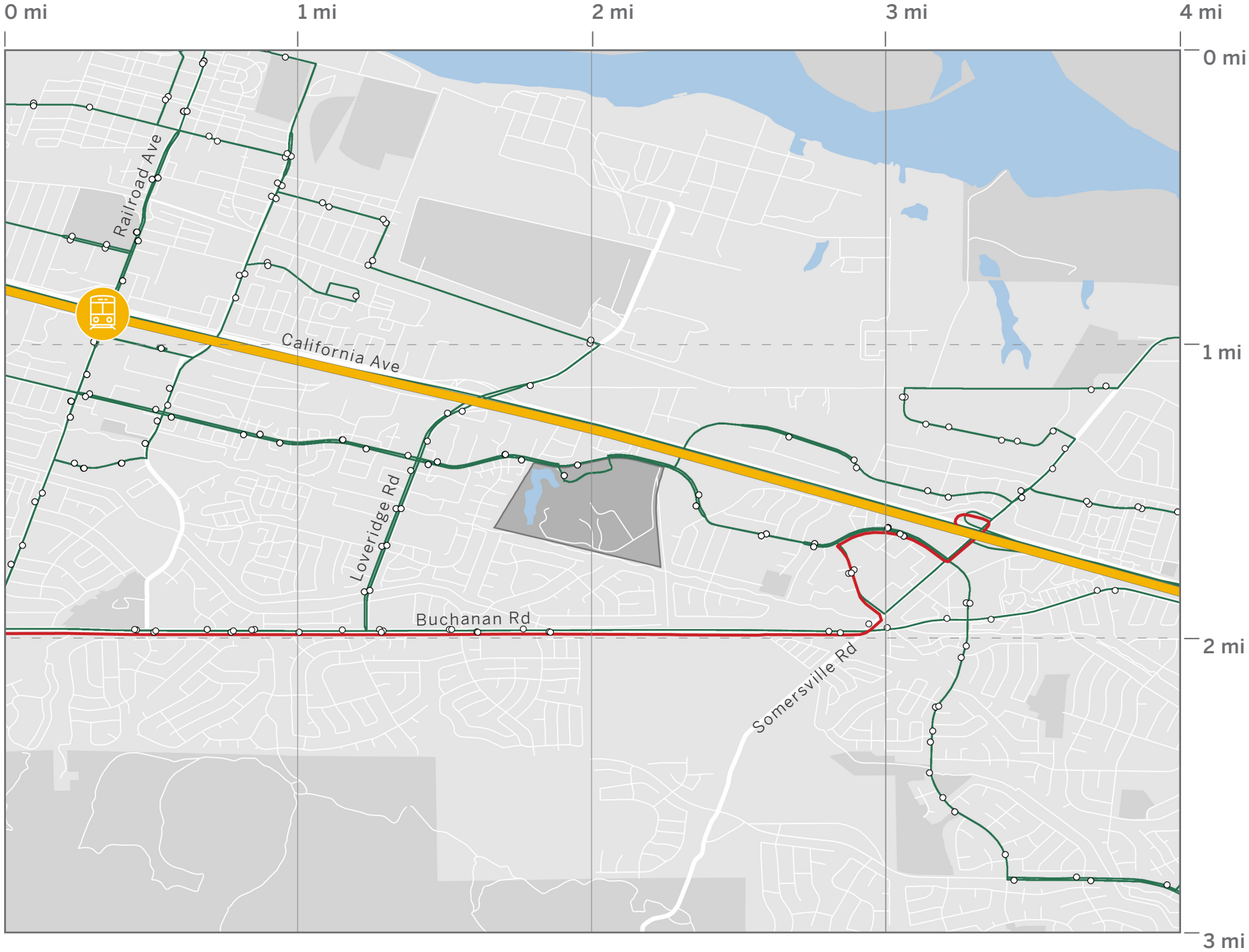


# NEIGHBORHOOD CONTEXT

## Transit Network

### LEGEND

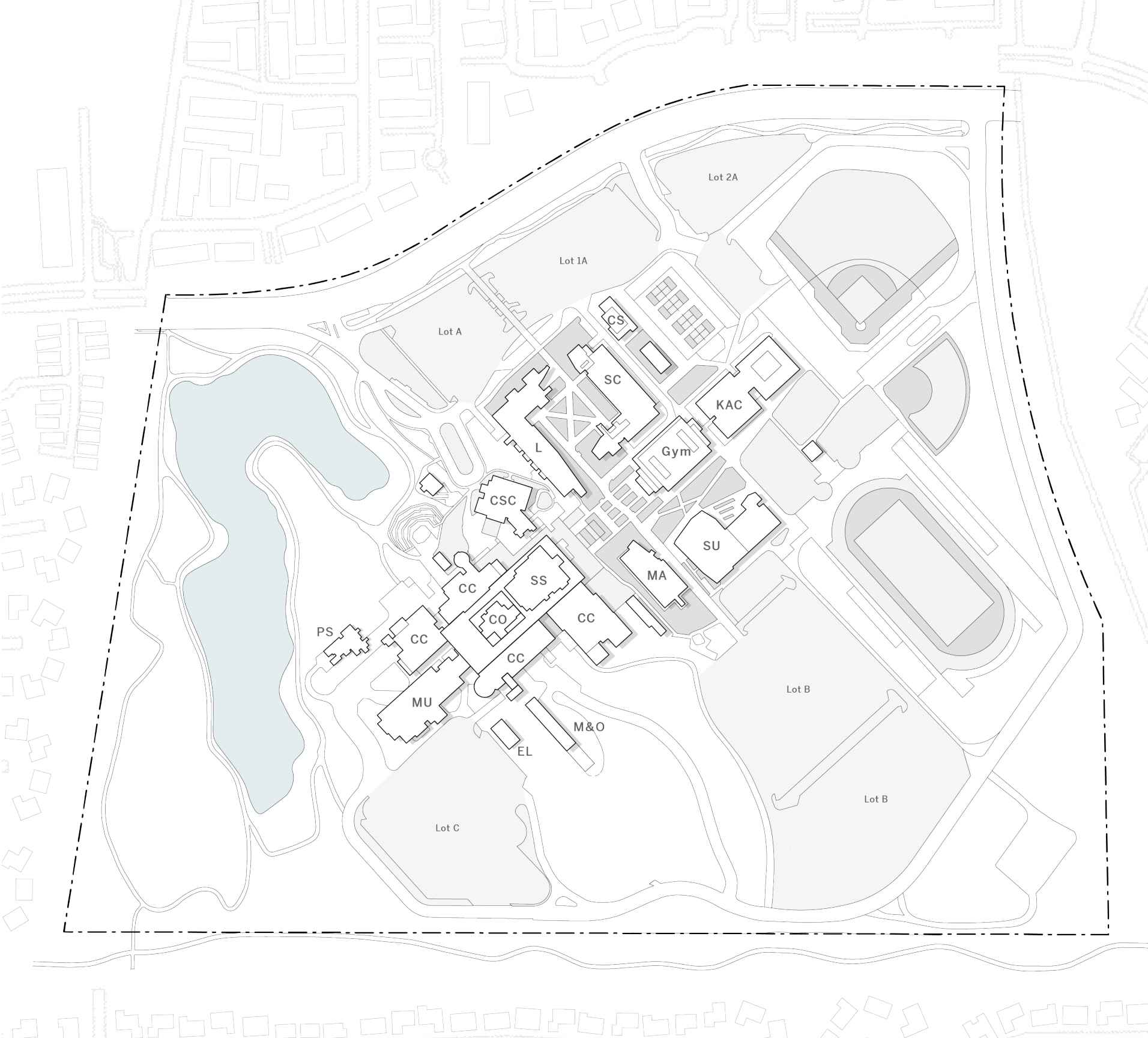
-  BART Yellow Line *Antioch-SFO+Millbrae*
-  BART Station *Pittsburg Center*
-  Tri Delta Bus Line
-  County Connection Bus Line
-  Bus Stop



# PITTSBURG CAMPUS

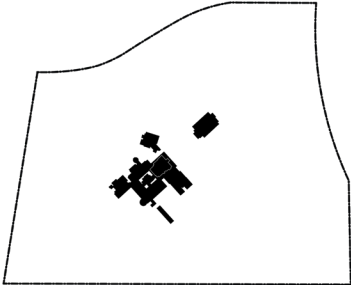
## Buildings

CC	College Complex
CO	College Core
CS	Campus Safety
CSC	Child Services Center
EL	ETEC Lab
Gym	Gym
KAC	Kinesiology & Athletics Complex
L	Library
MA	Math
MU	Music
M&O	Maintenance
PS	Classrooms
SC	Science
SS	Student Services
SU	Student Union

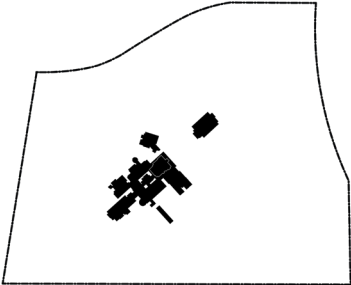


# CAMPUS ANALYSIS

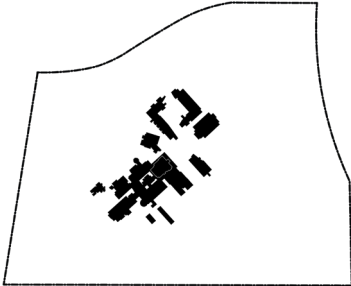
Building Age



1970s



1990s



2000s



Present

## LEGEND

- 1970s
- 1980s-1990s
- 2000s
- 2010s-Present



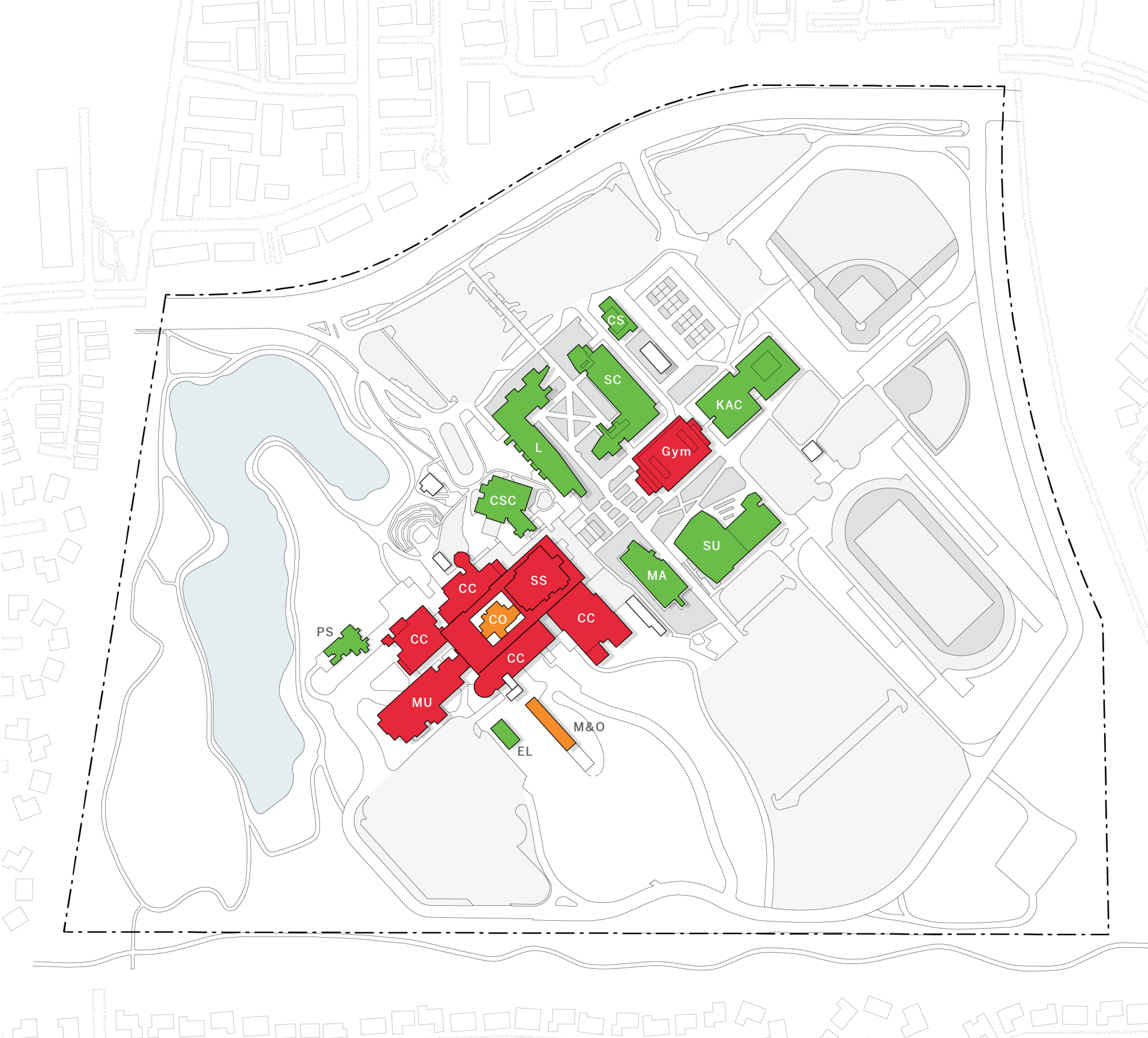
# CAMPUS ANALYSIS

## Facilities Condition Index

- Facilities Condition Index (FCI) is a formula measuring the ratio of the cost to correct existing facility deficiencies against the current replacement value of the facility
- The higher the FCI score, the poorer the condition of a facility

### LEGEND

- Good (0-5%)
- Fair (5-10%)
- Poor (10-30%)
- Critical (>30%)










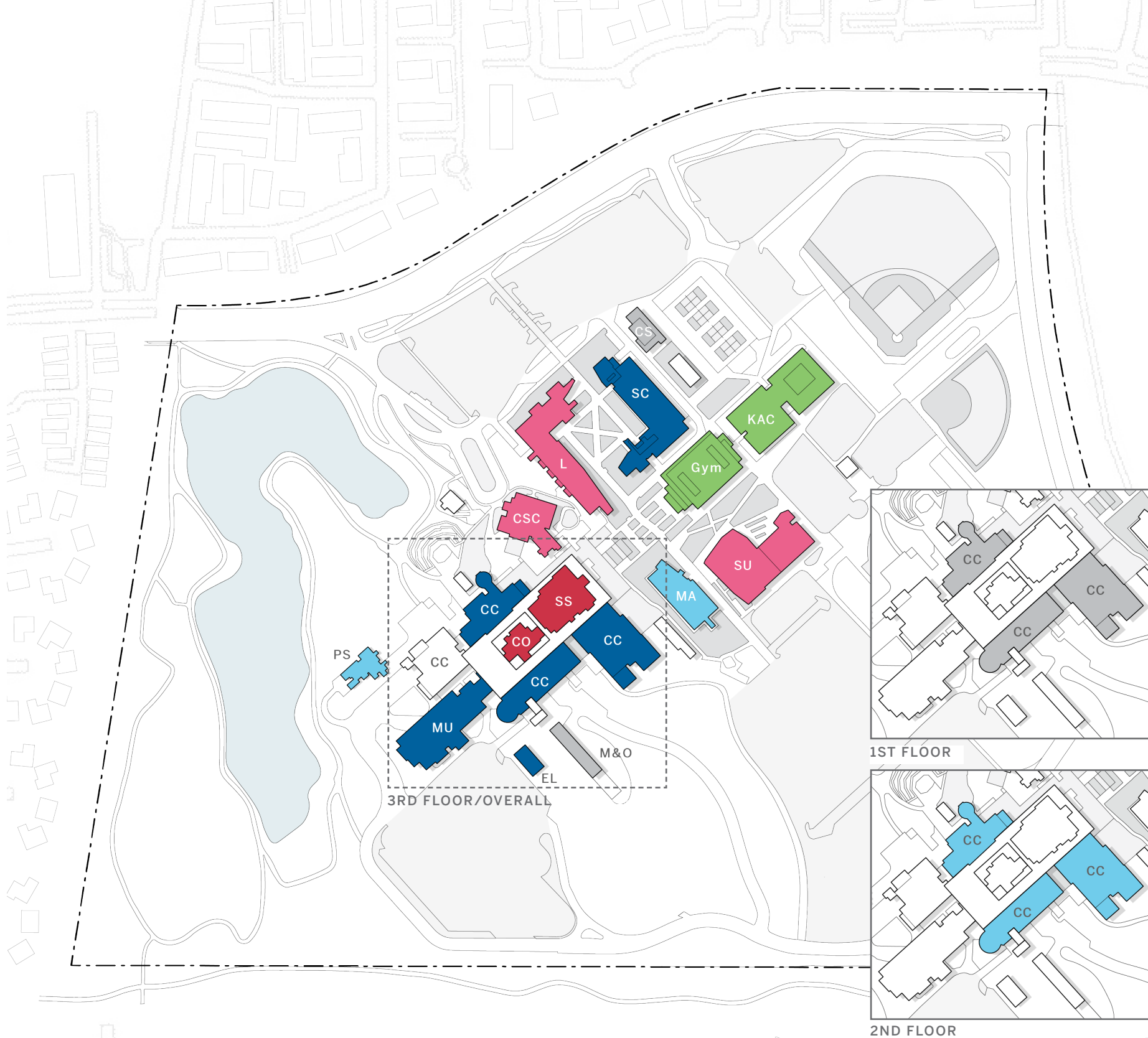
# CAMPUS ANALYSIS

## Primary Building Use

- Offices, instructional spaces, and special/ student spaces are dispersed throughout individual buildings and across campus
- Special Use includes Library, Community Service, Child Care, Assembly Service, Logistical Services, Food Services, and more

## LEGEND

-  Classroom
-  Lab
-  Office
-  Special Use
-  Athletics
-  Support
-  Inactive/Unknown



# EXTENSIVE ANALYSIS

What you will see next

## SEPTEMBER

- Physical Analysis (regional, neighborhood, campus)
  - Building Use
  - Land Use
  - Landscape & Open Space
  - Mobility (Pedestrian, Transit, Vehicular, ADA, Bike, Multi-modal)
  - Parking
- Demographics Analysis
  - County
  - District
  - College
- Enrollment Analysis
- WSCH Analysis

## OCTOBER

- Space Utilization
- Sustainability
- Wayfinding
- Facilities Condition

**INCLUSIVE OF CAMPUS & CENTER**



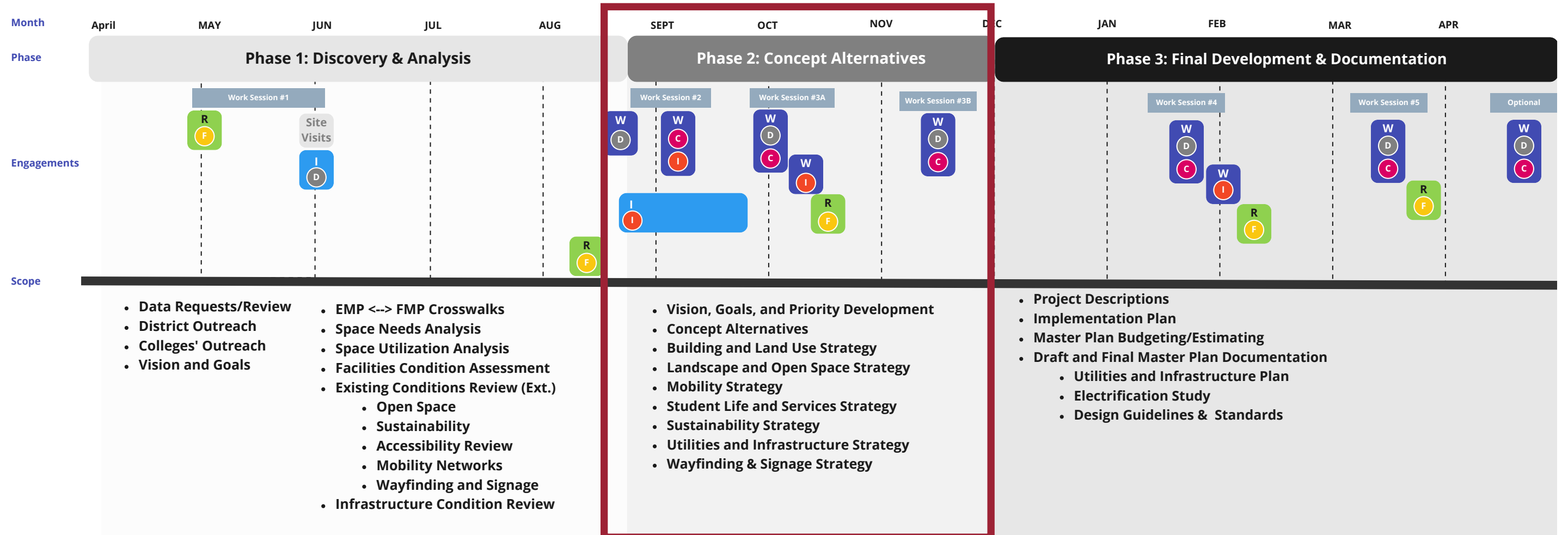
# NEXT STEPS

---

04

# PROCESS & ENGAGEMENT

## Timeline



### KEY

#### Engagement Groups

- D** District Leadership
- C** Core Group / Steering Committee
- I** Involved / Senates & SBG
- F** Informed / College Assembly

#### Engagement Types

- W** Workshop
- I** Interview
- R** Road Show
- S** Survey

**Workshop:** Virtual or in person presentation of process intended to elicit feedback. Occur every 4-6 weeks throughout the project. Focused on working through the design and planning process and garnering feedback from key stakeholders at important milestones of the project.

**Interview:** Virtual or in person interview for the purpose of analysis and assessment of current conditions. A series of one-on-one or group interviews that help us understand how the campuses and its facilities are being used today, and areas for change or improvement.

**Road Show:** Virtual or in person presentation to inform the 4CD community. A series of presentations to the campus or greater community for each College, intended to give project updates and solicit feedback.

**Survey:** Online survey and questionnaires to collect information from larger groups. Indented to fill in information from stakeholders that would otherwise be challenging to meet with one-on-one.

**WE WANT TO HEAR FROM YOU**

---

**05**