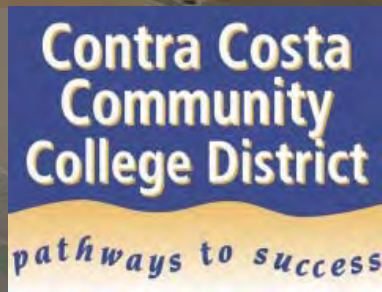
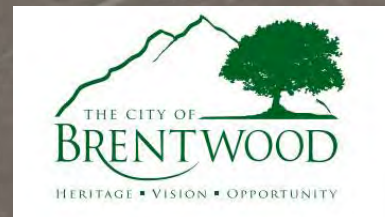


Contra Costa CCD, Los Medanos College Brentwood Center Community Meeting #2 January 5, 2017



AGENDA

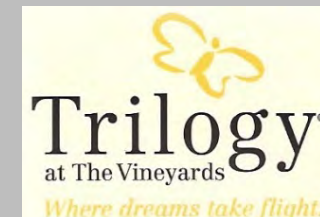
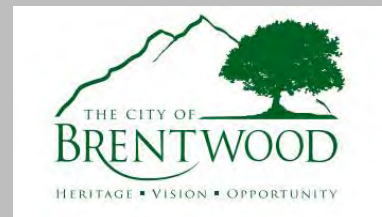
1. Introductions

- Los Medanos College
- Shea Homes

2. Project Update, CCCCD Chief Facilities Planner, Ray Pyle

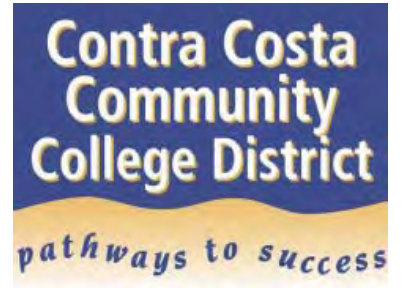
3. Design Development, Ratcliff

4. Discussion & Next Steps



History & Overview

HISTORY



- 1989** CCCCD began offering classes in Liberty Union HS Adult Center
- 1991** CCC Board of Governors approves community colleges' long range plan with two centers in District
- 2001** Opened classes in current center on Sand Creek Road
- Feb '08** Brentwood Center expected to reach Full Time Equivalent Students (FTES) for state approval in '08-09
- Oct '08** LMC released a Request for Interest for a Far East County site for the new center
- Jul '09** District Board approved recommendation for Pioneer Square
- Sep '09** Pioneer Square site appraised at \$7.5M. Cost for 17.5 acres for college site comes in at \$4.9M.
Utilities and street improvements are already planned and paid for
- Oct '10** Brentwood Planning Commission approves the Pioneer Square site
- Nov '10** District Board approves purchase agreement for Pioneer Square site
- Jul '11** Close of escrow and recording of deeds
- Aug '11** Needs Study submitted to CCC Chancellor's Office (CO) for Board of Governors (BOG) consideration
- Mar '12** CCCCO BOG approves Brentwood Educational Center as a state approved center

PROJECT OVERVIEW

A new “Education Center”

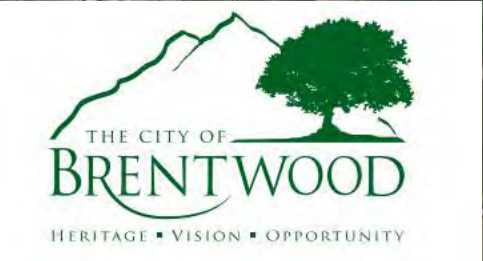
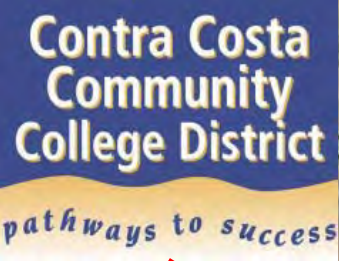
- Not a new full-size District College
- 17.5 acres

Two phases over time

- Phase 1: Current project under design
 - Construct one new building, approximately 55,000 square feet, one story
 - Construct new parking – 600 to 700 spaces with landscape and lighting
- Phase 2: Future project – tentatively ten to twenty years later
 - Construct one new building
 - Additional parking as needed
- No real estate expansion beyond current 17.5 acres

NEW BRENTWOOD CENTER PROJECT SCHEDULE:

- Project Validation/ Programing: *COMPLETE*
- **Design:** **April 2016 – September 2017**
- Division of the State Architect (DSA): October 2017 – March 2018
- Bid Phase: April 2018 – June 2018
- Construction Phase: July 2018 – December 2019
- Occupancy: Spring / Summer 2020



Partnerships



Design Development



Bill Blessing
Principal-in-Charge



Patricia Alarcón
Project Manager

RATCLIFF

PROJECT GOALS

- Create a center that is ***connected to the local history*** and community
- Create a ***sustainable center***, connected to nature, promoting health and wellness
- Provide learning ***environments that are flexible and technology rich*** and promote collaboration
- Provide learning environments that ***support broadening curriculum*** and student research
- Provide soft space, learning environments and student services that ***support the existing sense of community***

Site Development Planning

Site Plan

674 standard spaces

14 accessible spaces
(includes 3 vans)

1 emergency vehicle

TOTAL PARKING:
~689 spaces

8 Golf cart parking



Site Circulation



Building Entry



Pedestrian Circulation



Vehicular Circulation



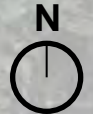
Loading area



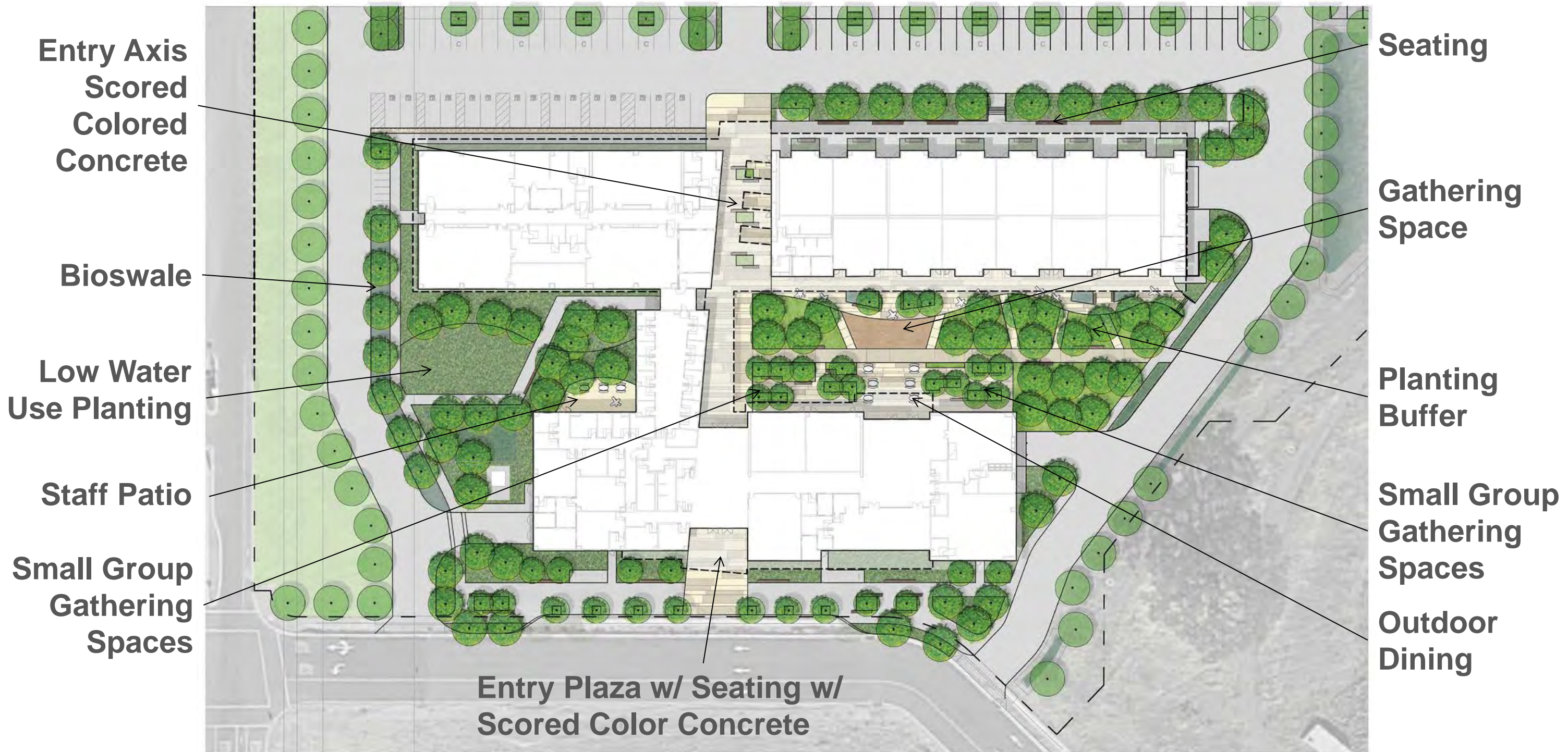
Transformer



Vehicular gate



LANDSCAPE PLAN: BUILDING

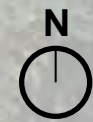


Building Planning

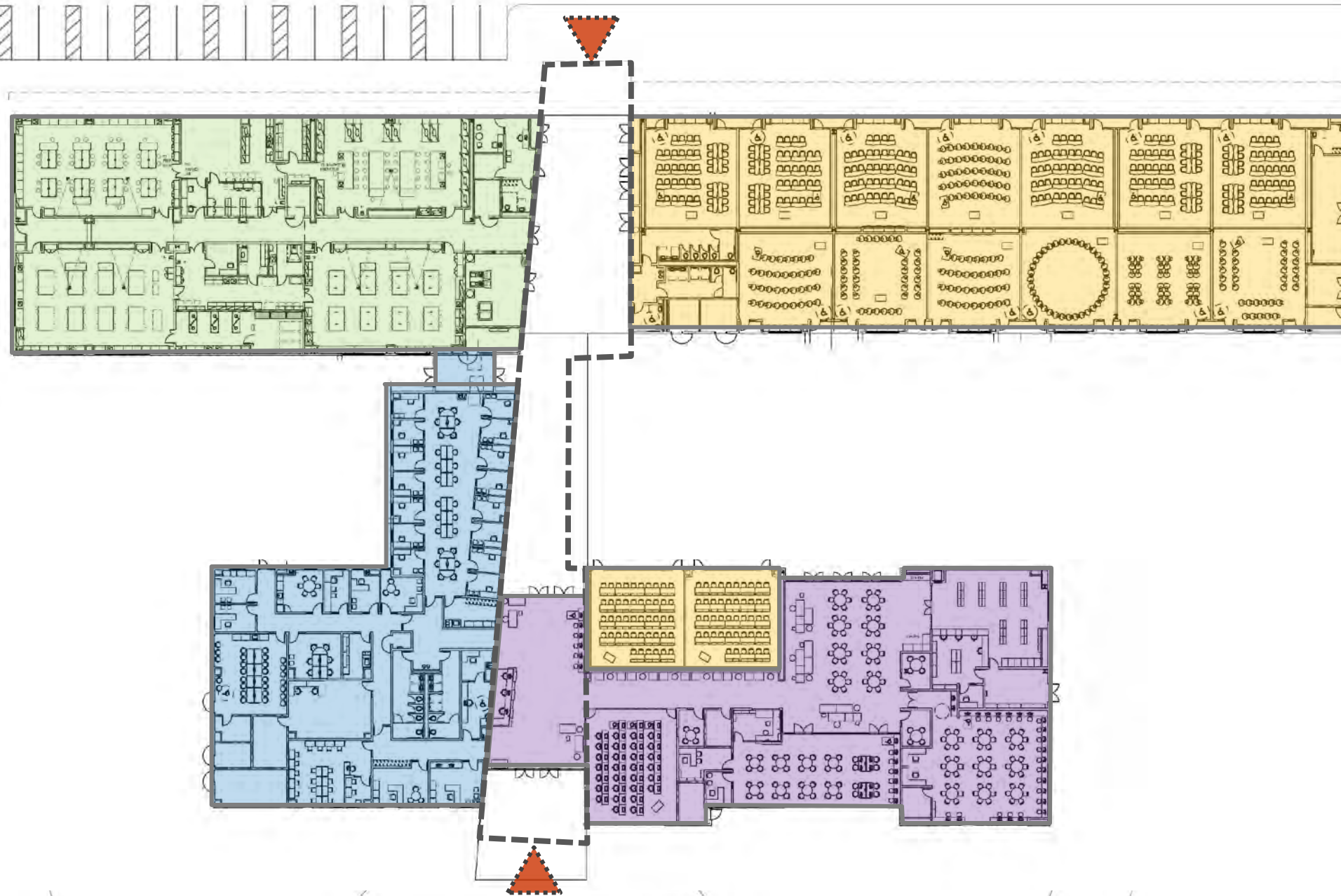
Relative Building Footprint

Club Los Meganos:
~45,350 SF






Brentwood Center:
~54,700 SF

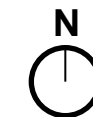


FLOOR PLAN: OVERALL



Total Area: 54,710 GSF

-  Entry
-  Classrooms (15)
 - (9) Large/ 45-seat
 - (6) Medium/ 35-seat
-  Science Labs
 - (4) Labs + Support
-  Student Support
-  Admin/ Faculty



Building Materiality





Trilogi at The Vineyards

Club Los Meganos

Weddings at Club Los Meganos

Vista Dorado

Chianti Ln

Barbaresco Lane

Barbaresco Lane

Barbaresco Lane

Tiempavillo Ln

Navarra Way

Rioja Way

Marsh Creek

Sparrowk Livestock

Marsh Creek Rd

Vasco Rd

Sh Heritage Hwy

4

4







CENTER MATERIAL PALETTE



Building Massing

AERIAL LOOKING NORTH



VIEW FROM MIWOK LOOKING NORTHWEST



VIEW FROM MIWOK LOOKING NORTHWEST



VIEW FROM VINEYARD



CENTER SOUTH ENTRY



CENTER NORTH ENTRY





NEW BRENTWOOD CENTER PROJECT SCHEDULE:

- Project Validation/ Programing: *COMPLETE*
- **Design:** **April 2016 – September 2017**
- Division of the State Architect (DSA): October 2017 – March 2018
- Bid Phase: April 2018 – June 2018
- Construction Phase: July 2018 – December 2019
- Occupancy: Spring / Summer 2020

Discussion & Next Steps

