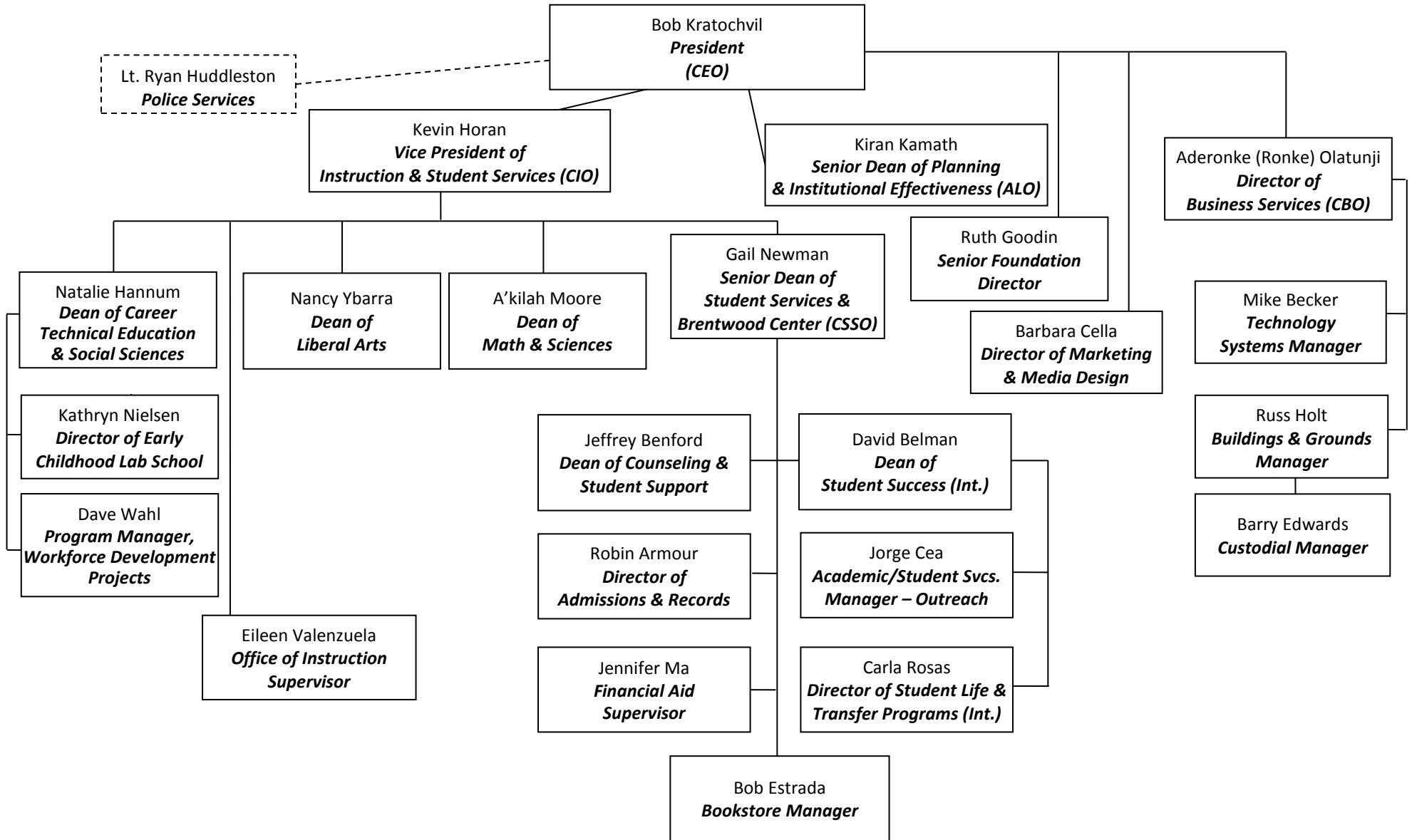
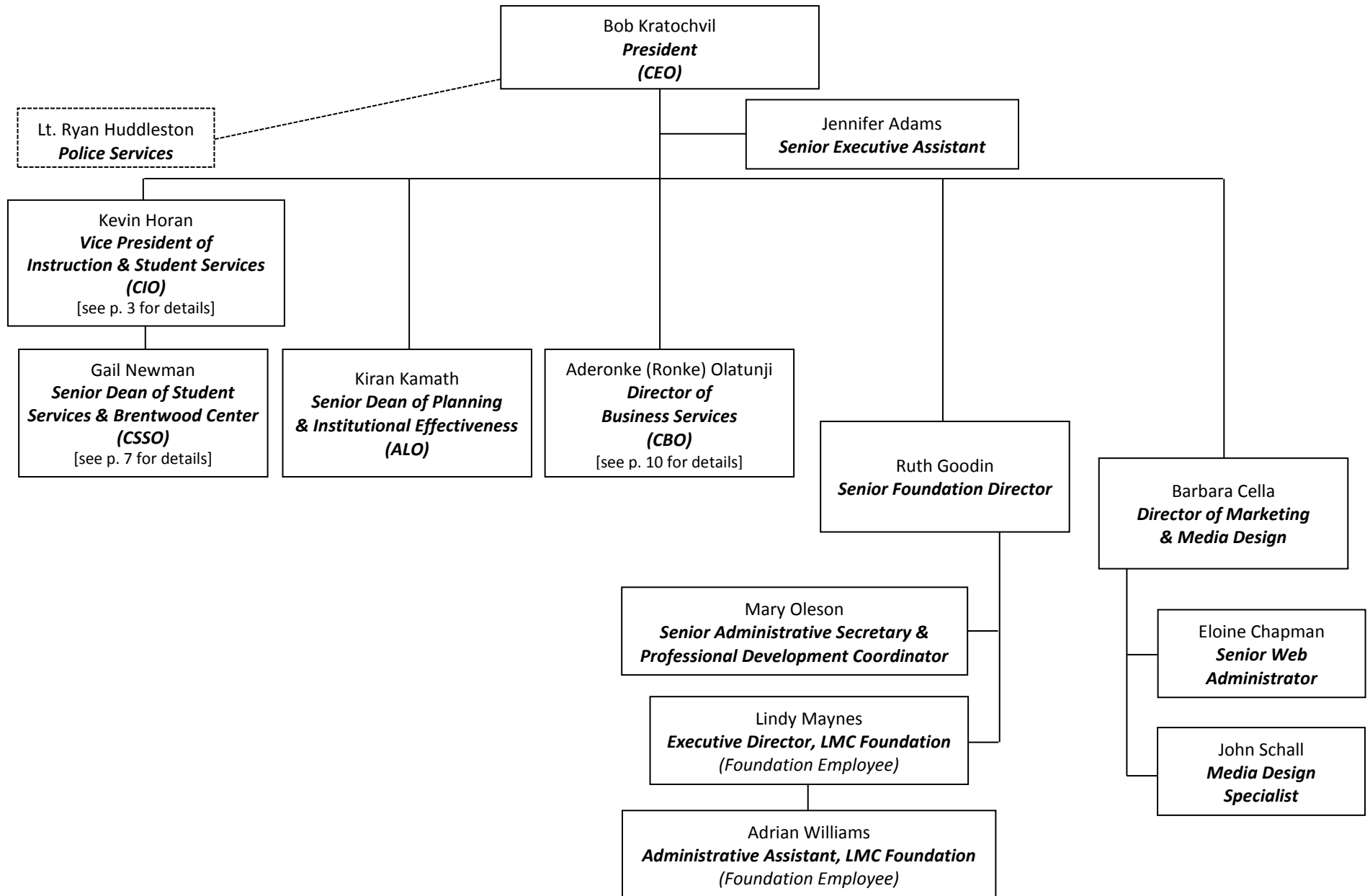


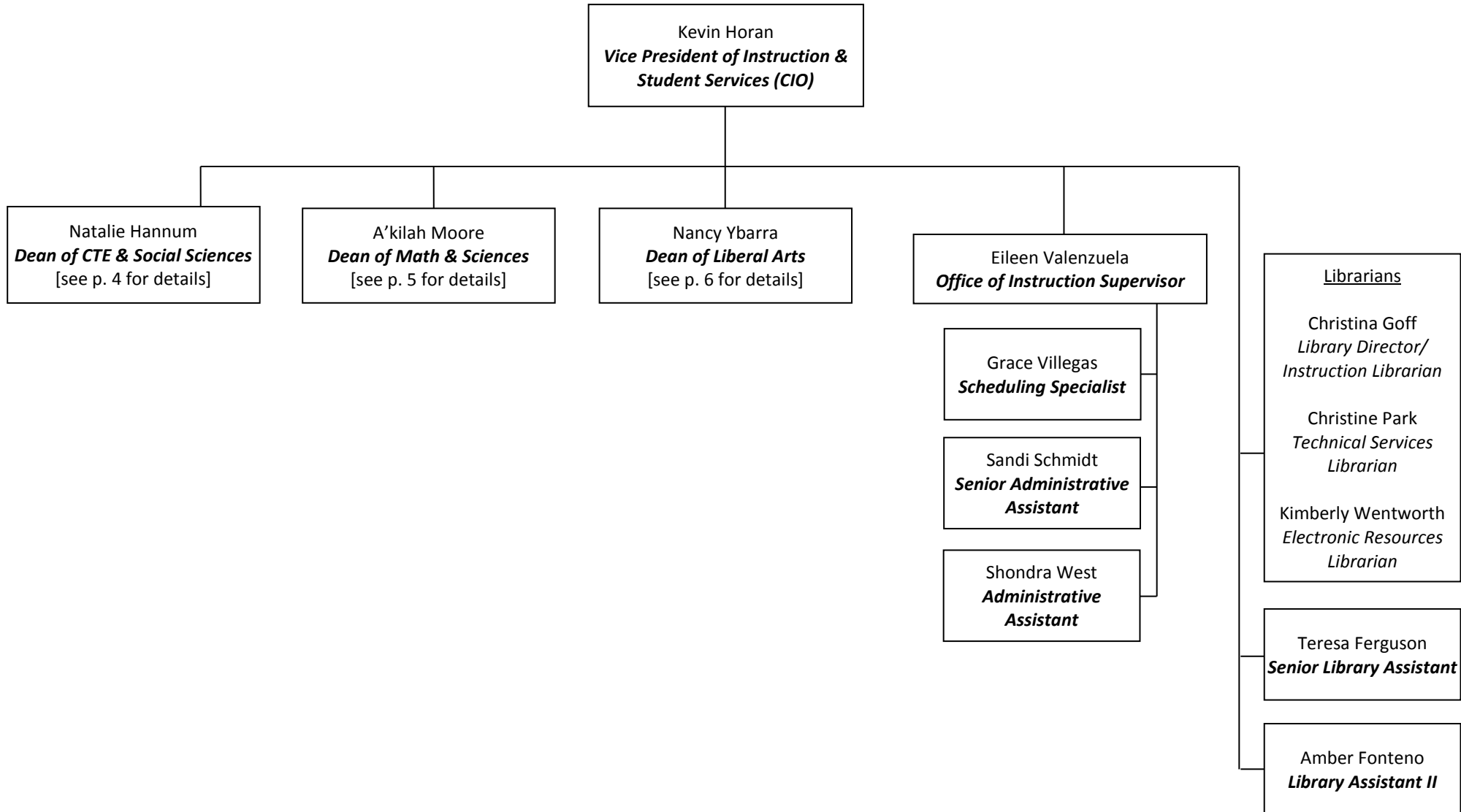
ADMINISTRATION



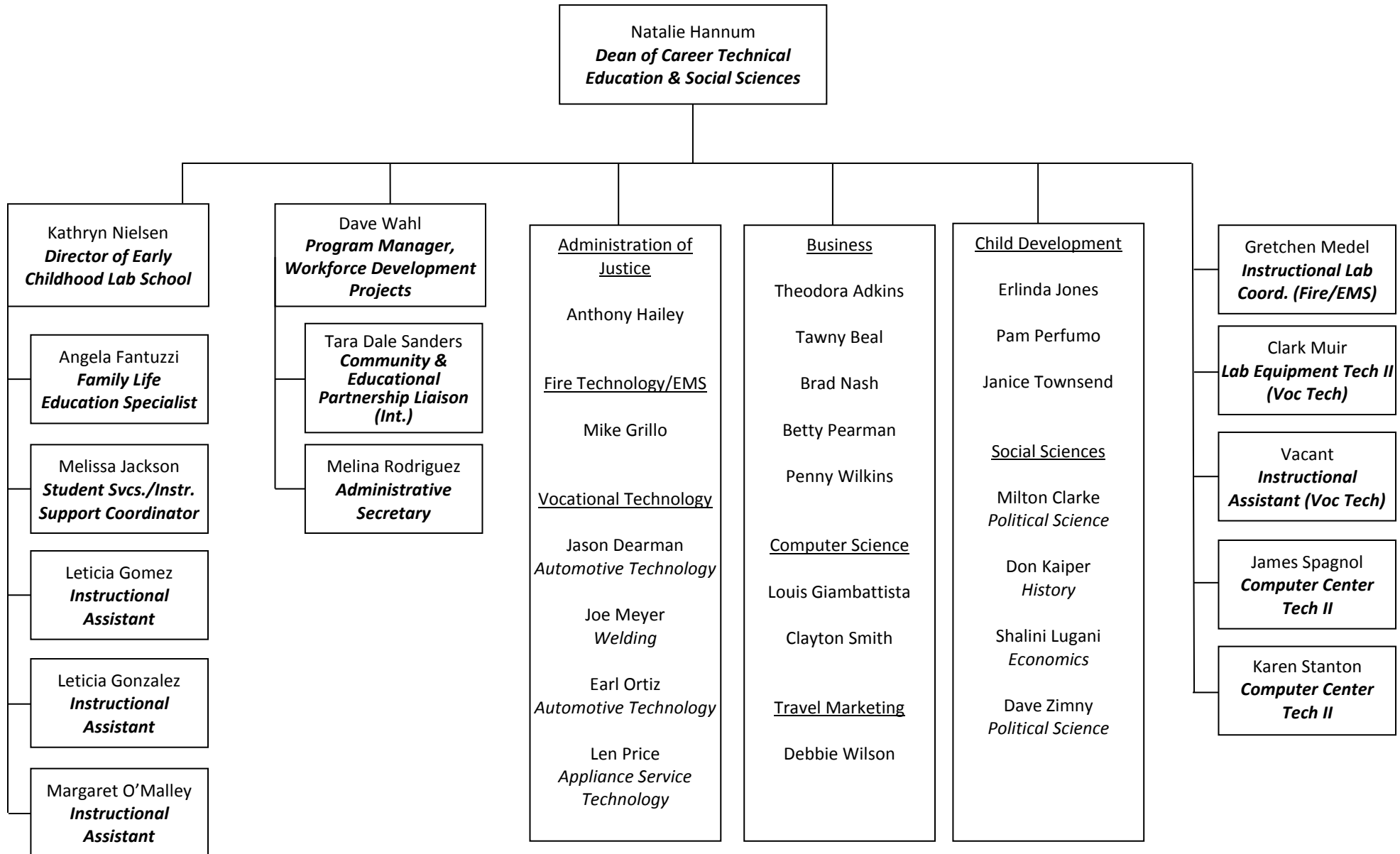
**PRESIDENT'S OFFICE, DIRECT REPORTS & CABINET**



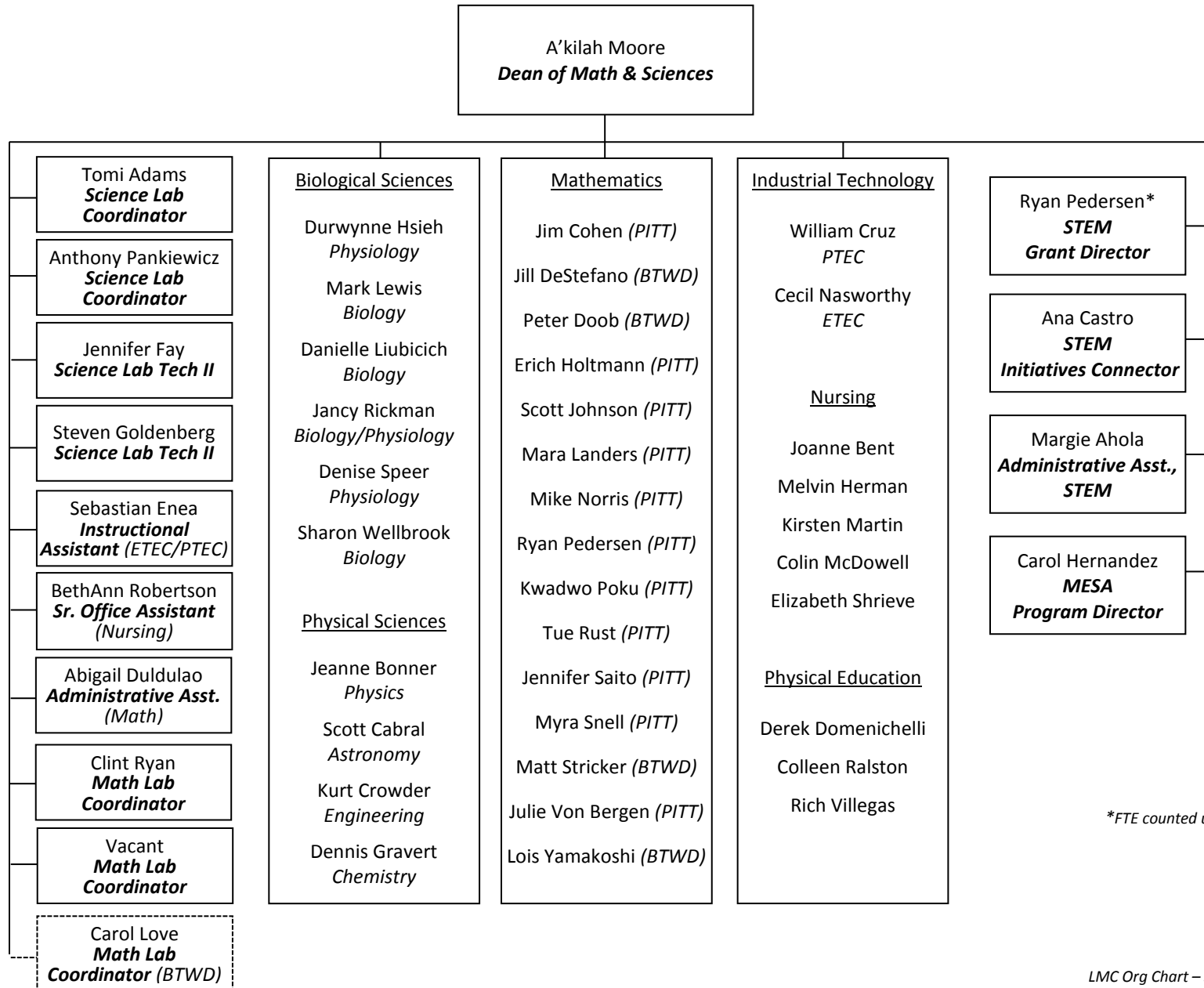
OFFICE OF INSTRUCTION



CAREER TECHNICAL EDUCATION & SOCIAL SCIENCES



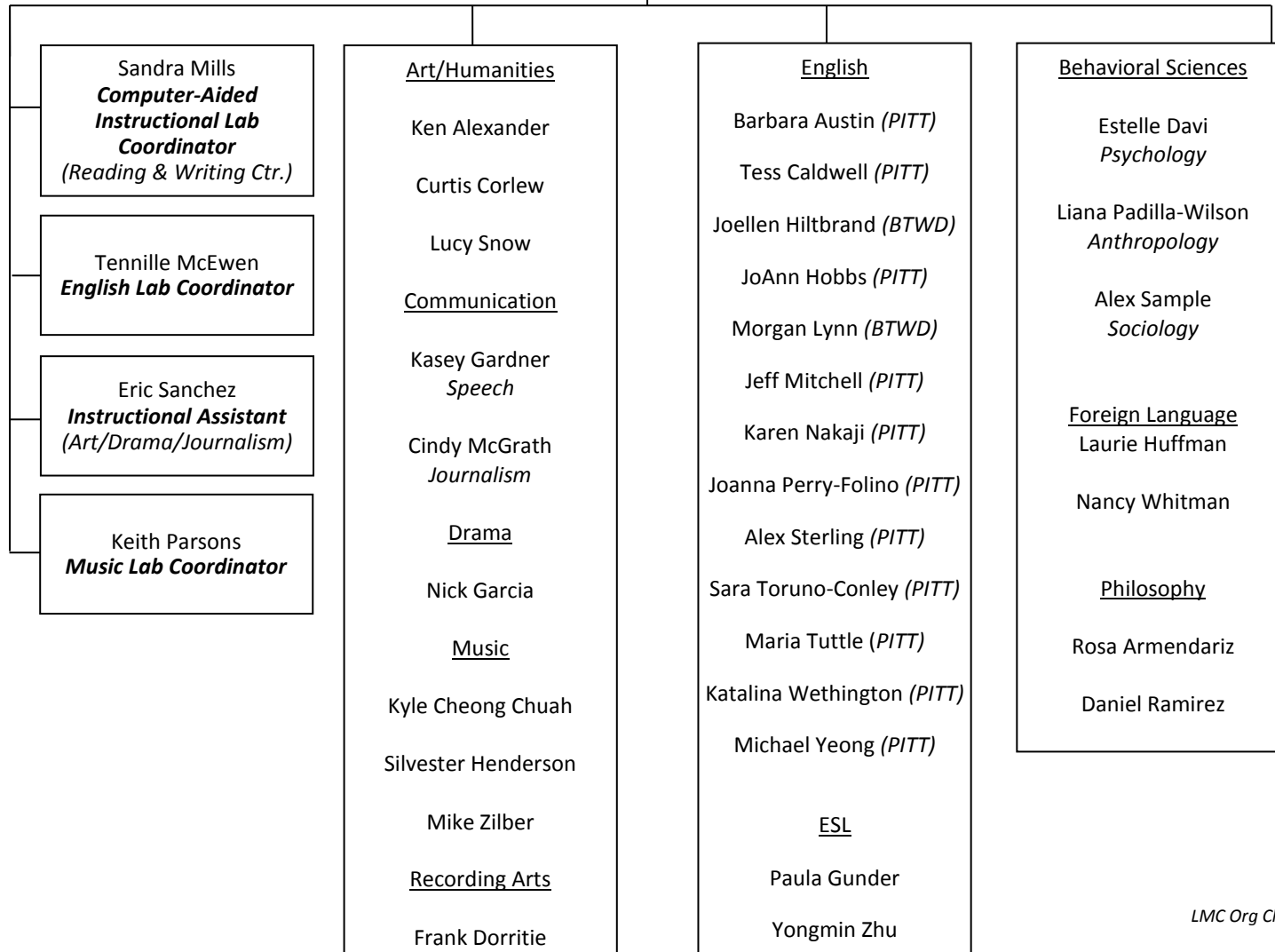
**MATH & SCIENCES**



\*FTE counted under Math Department

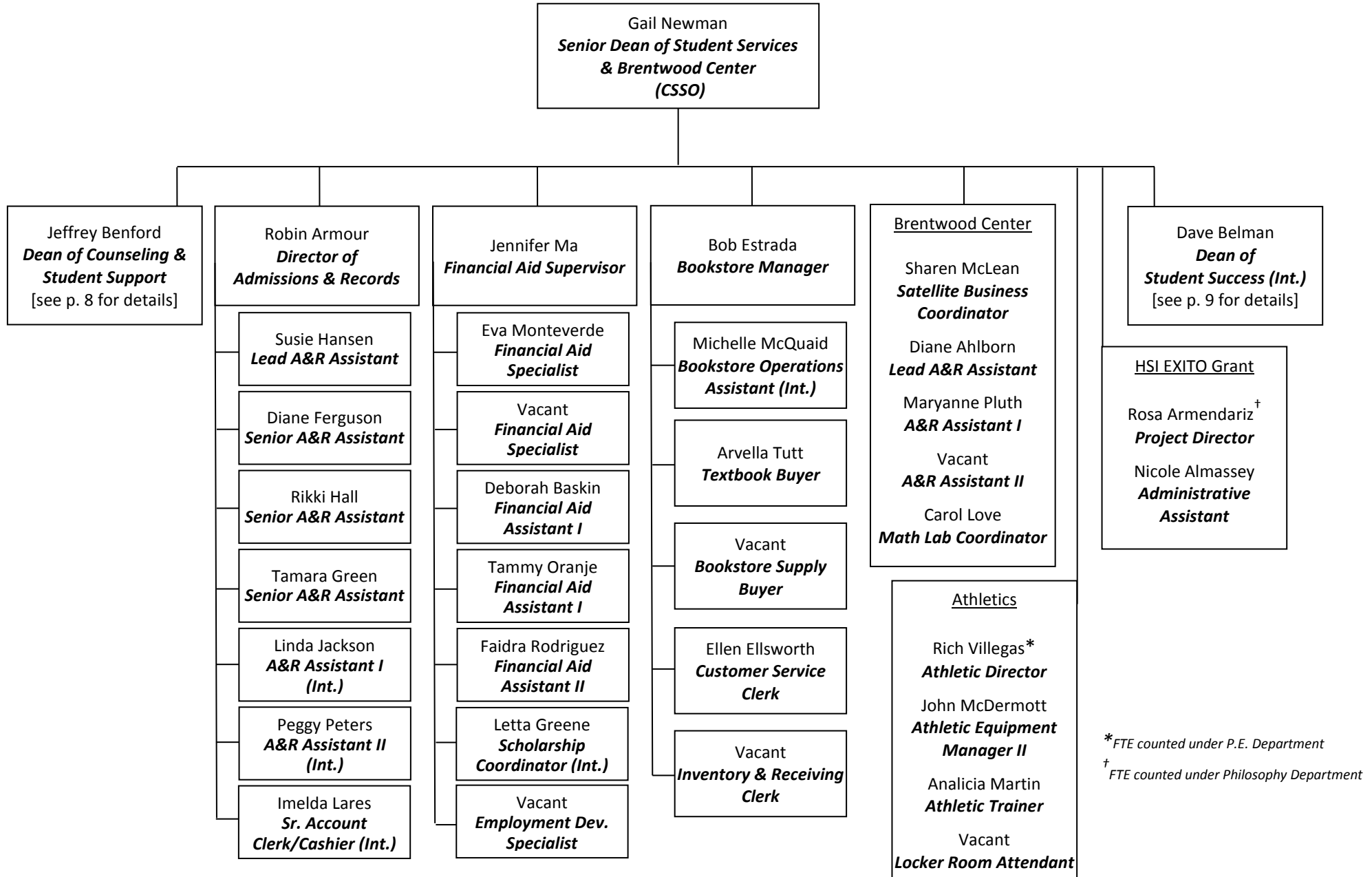
**LIBERAL ARTS**

Nancy Ybarra  
*Dean of Liberal Arts*



# LOS MEDANOS COLLEGE

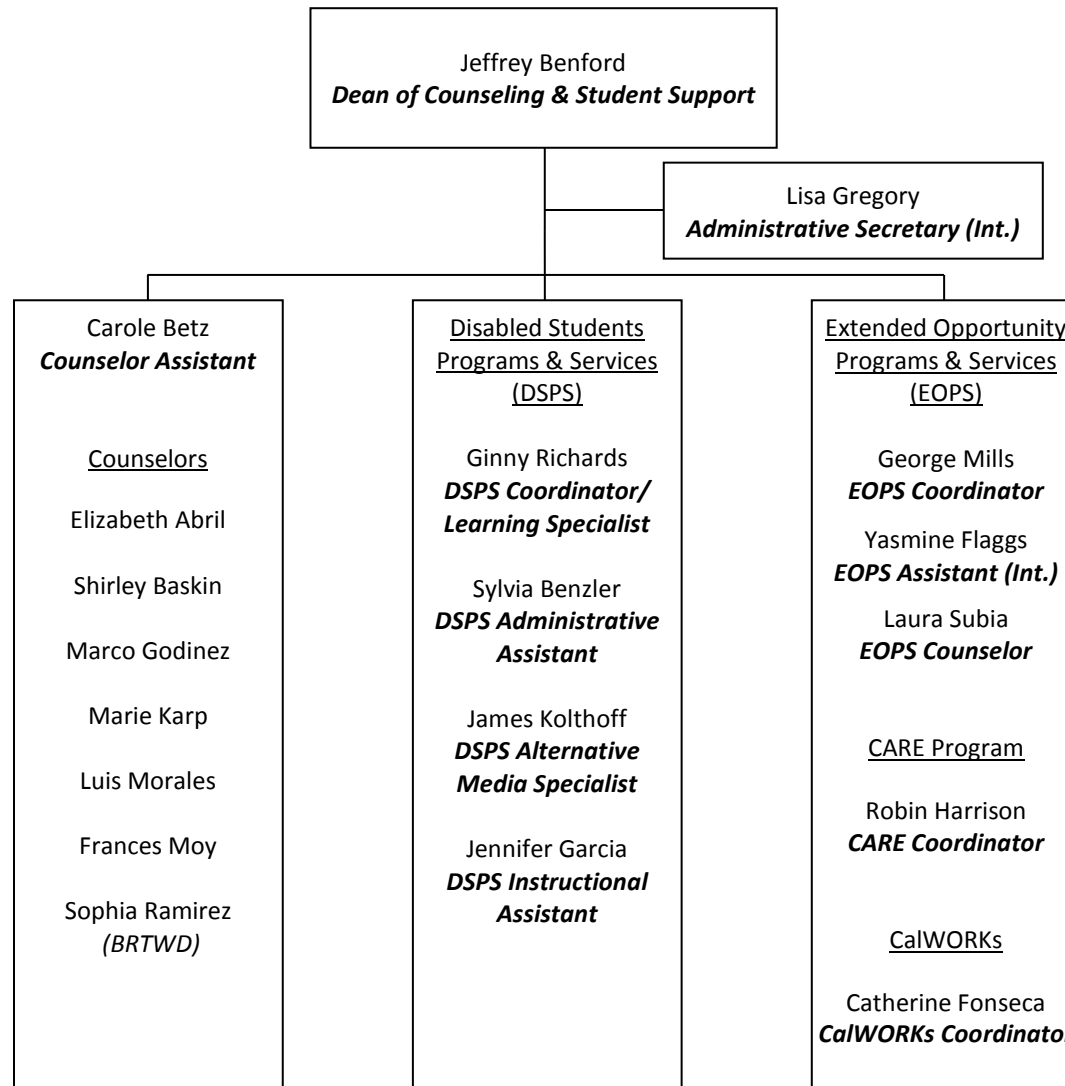
## STUDENT SERVICES



\*FTE counted under P.E. Department

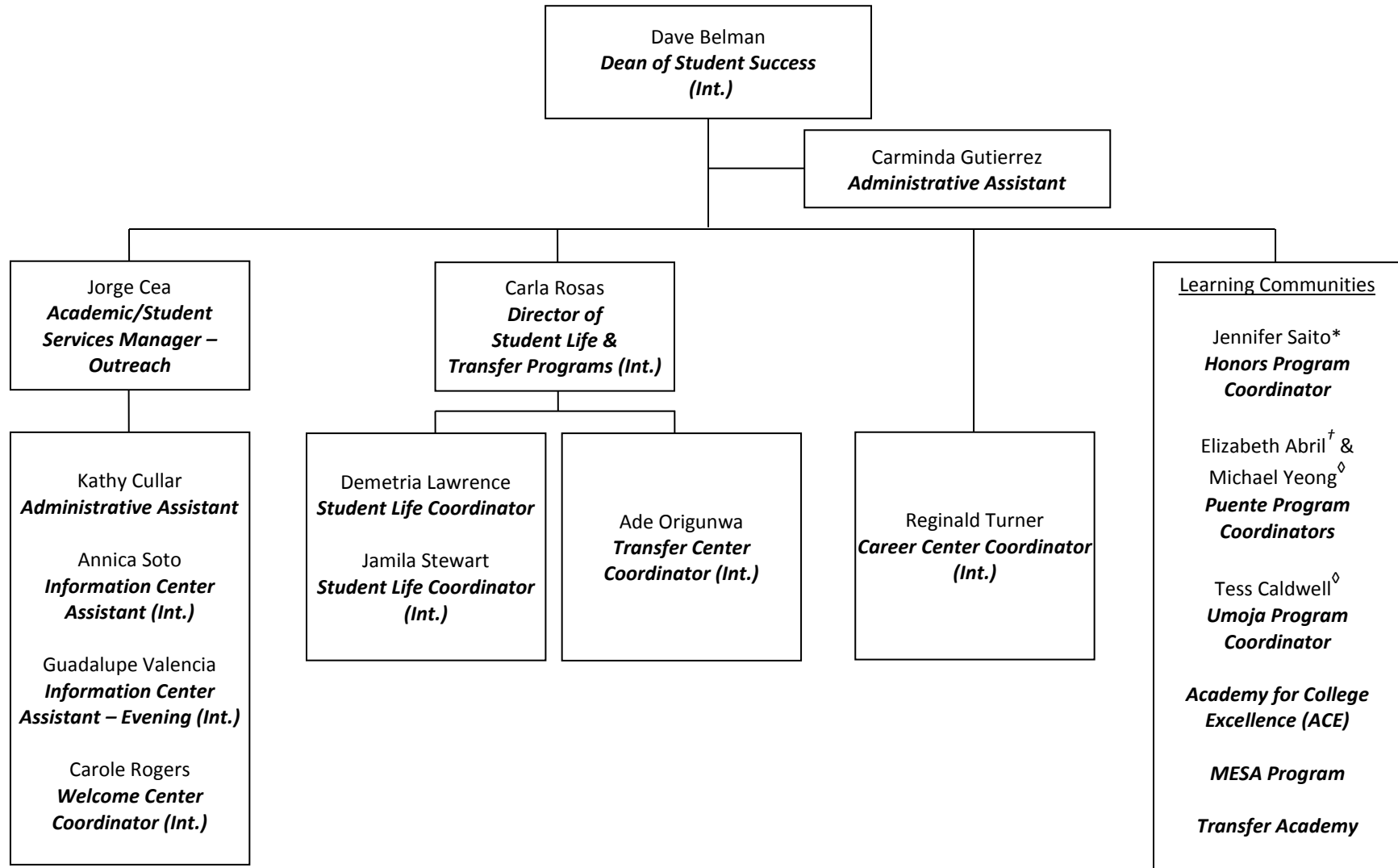
† FTE counted under Philosophy Department

**COUNSELING & STUDENT SUPPORT**





**STUDENT SUCCESS**



\* FTE counted under Math Department

† FTE counted under Counseling Department

◊ FTE counted under English Department

**BUSINESS SERVICES**

