

SUMMER CLASSES 2020



LOS MEDANOS
COLLEGE

www.losmedanos.edu

LOS MEDANOS COLLEGE Important Dates

Contra Costa Community College District

Los Medanos College is proud to be part of the Contra Costa Community College District. The District Office is located at 500 Court Street in Martinez, California 94553.

Other colleges in the district include:

Contra Costa College in San Pablo, and Diablo Valley College in Pleasant Hill and San Ramon.

Board of Trustees

John E. Márquez, *Ward 1*
Vicki Gordon, *Ward 2*
Rebecca Barrett, *Ward 3*
Andy Li, *Ward 4*
Greg Enholm, *Ward 5*
Shreejal Luitel, *Student Trustee*

Interim Chancellor

Eugene Huff

Los Medanos College

Bob Kratochvil, Ed.D., *President*

Six-week session June 17 - July 25

Summer 2020 Online Registration Dates:

DATE	PRIORITY GROUP	CRITERIA
April 20	Group 1	Priority registration for EOPS, DSPS, qualified veterans, qualified foster youth and CalWORKs, for students under 100 degree-applicable units or in good standing
April 21	Group 2	Special registration for DSPS note takers, early graduation applicants and qualified athletes, for students under 100 degree-applicable units or in good standing
April 22	Group 3a	Continuing* students with 45-75 units within the district
April 23-24	Group 3b	Continuing* students with 0-44.99 units within the district
April 27	Group 3c	Recent matriculated* high school graduates
April 28	Group 3d	Continuing* students with 75.01-99.99 units within the district
April 29	Group 3e	New matriculated* and returning* students with less than 100 units in the district
May 4	Group 4	Registration for continuing* and returning* students over 100 degree-applicable units or on 2 nd semester probation or dismissal
May 11	Group 5	New non-matriculated and exempt students

Summer 2020 Open/Online Registration Dates:

May 27	Group 6	ALL Special Admit/Concurrent high school students registration
May 28	Group 7	Open registration for all college students

Other Important Dates:

Memorial Day – Holiday, College closed	May 25
College closed on Fridays	May 29-August 14
Independence Day Observance – Holiday, College closed	July 4

* Continuing Students - Students who have been enrolled at LMC Summer 2019, Fall 2019, and Spring 2020.

* Returning students - Students who have missed more than one academic year; will need to reapply online.

* New matriculating students - Students who have completed the orientation, assessment and student education plan.



Connecting People & Resources Together

LMC is delivering Summer classes & student services remotely. Here you will find information and resources to assist with navigating LMC's online classes and service resources for students, faculty and all employees.

The Pittsburg Campus and Brentwood Center will remain closed to students, the public, and most employees until further notice. All face-to-face classes and services have been suspended to minimize the spread of COVID-19.

Students: Please connect with your instructors via Canvas and check your College email often for updates. For assistance with LMC's online support services, use the Live Chat feature on this website or call (925) 473-7434.

Visit our community resources & links page:
www.losmedanos.edu/onlineresources/index.aspx

Table of Contents

General Information

Academic Standards	33	Programs of Study.....	10
Admission Information	2	Refund Information	6
California College Promise Grant	9	Registration Information.....	2
Campus Directory.....	41	Register Online.....	12
Campus Map	43	Student Code of Conduct.....	35
Campus Policies	36	Study Abroad Opportunities.....	7
Course Offerings.....	15	Transportation Information.....	38
Directions Map	42	Verifications	36
Fees & Tuition	6		
Financial Assistance.....	9		
How to Read the Schedule.....	14		
InSite Portal and InSite Mail.....	11		
Parking Information.....	38		

Course Listing

Administration of Justice.....	15	Philosophy	27
Anthropology.....	15	Physical Science	28
Art/Graphic Communications	15	Physics	28
Biological Science.....	16	Political Science.....	28
Business.....	16	Process Technology.....	28
Child Development.....	17	Psychology	29
Computer Science.....	18	Recording Arts	29
Cooperative Education.....	18	Sign Language.....	29
Counseling.....	19	Sociology.....	30
Dramatic Arts	19	Spanish.....	30
English	20	Speech/Communications.....	31
English as a Second Language.....	21	Supervised Tutoring	32
Fire Technology.....	22	Travel	32
History.....	23		
Humanities	23		
Journalism.....	23		
Kinesiology	24		
Kinesiology-Activity	24		
Kinesiology-Dance	24		
Kinesiology-Intercollegiate Athletics.....	24		
Mathematics.....	25		
Music	26		
Nursing—Registered.....	27		
Nursing—Vocational.....	27		
Nutrition.....	27		

LOS MEDANOS COLLEGE

Mission

STATEMENT

Los Medanos College is a public community college that provides quality educational opportunities for those within the changing and diverse communities it serves.

By focusing on student learning and success as our first priorities, we aim to help students build their abilities and competencies as life-long learners. We create educational excellence through continually assessing our students' learning and our performance as an institution. To that end, we commit our resources and design our policies and procedures to support this mission.

Vision

Los Medanos College provides the premier educational opportunity for East County residents, where learning matters most.

Values

Values remind us of what matters most. Los Medanos College is an educational community that cares deeply about learning, collaboration, effective communication, and engagement with our surrounding community.

Accreditation

Los Medanos College is accredited by the Accrediting Commission for Community and Junior Colleges of the Western Association of Schools and Colleges, an institutional accrediting body recognized by the Commission on Recognition of Postsecondary Accreditation and the U.S. Department of Education.

Admission & Registration Information

Summer 2020 ONLINE REGISTRATION DATES

DATE	PRIORITY GROUP	CRITERIA
April 20	Group 1	Priority registration for EOPS, DSPS, qualified veterans, qualified foster youth and CalWORKs for students under 100 degree-applicable units or in good standing
April 21	Group 2	Special registration for DSPS note takers, early graduation applicants and qualified athletes for students under 100 degree-applicable units or in good standing
April 22	Group 3a	Continuing* students with 45-75 units within the district
April 23-24	Group 3b	Continuing* students with 0-44.99 units within the district
April 27	Group 3c	Recent matriculated* high school graduates
April 28	Group 3d	Continuing* students with 75.01-99.99 units within the district
April 29	Group 3e	New matriculated* and returning* students with less than 100 units in the district
May 4-	Group 4	Registration for continuing* and returning* students over 100 degree-applicable units or on 2 nd semester probation or dismissal
May 11	Group 5	New non-matriculated and exempt students

Summer 2020 OPEN - ONLINE REGISTRATION DATES

May 27	Group 6	ALL Special Admit/Concurrent high school students registration
May 28	Group 7	Open registration for all college students.

For more registration information: www.losmedanos.edu/admissions/instructions.asp

* Continuing students - Students who have been enrolled at LMC Summer 2019, Fall 2019, or Spring 2020.

* Returning students - Students who have missed more than one academic year; will need to reapply online.

* New matriculating students - Students who have completed the orientation, assessment and education plan.

Who May Attend

Admission is open to anyone who is:

- 18 years old or older, or
- A high school graduate or completed a high school equivalency test: GED, HiSET, TASC or the California High School Proficiency Exam or
- Students currently enrolled in the high school, at least 14 years of age and who have completed eighth grade or higher.

How to Apply

New and returning students—Applications for admissions may be submitted online at www.losmedanos.edu. After the application is uploaded, students will receive an email with the student ID and registration date.

Special admit students—New and returning students may submit a college application online. This application should be submitted prior to the online registration date. Continuing high school students need not resubmit a college application.

Student Status

New Student

You are a new student if you have never registered in classes at LMC.

Returning Student

Returning students have not attended during the past year.

Continuing Student

Continuing students must have attended within the past year.

Program Changes During Late Add Period

Registration With Add Authorization

No course may be added after the late registration period. Check InSite for Summer class registration deadlines.

An instructor's approval is required to register in a class that has reached maximum enrollment or on the first day of class. First priority for late adds will go to students on the waitlists. Late registration may be processed as follows:

HOW TO REGISTER

Online

www.losmedanos.edu
Go to InSite.

App "LMC InSite"

1. All high school students begin online registration on May 27.
2. All regular college students begin online registration on May 28.

*Remote services are closed on Fridays, May 29-August 14.

- By Web— Go to www.losmedanos.edu and log in to InSite. Select "Register from your Ed Plan" and enter the course section number and click on the "Register" button by the last day to add;

Note: Telephone Registration is no longer available.

Drops/No Shows

Students who do not attend the first class meeting may be dropped by the instructor as a "no show." However, it is the student's responsibility to drop any class which he/she is not planning to attend. Failure to do so may result in an 'F' grade and a debt on the student's account. Non-attendance does not dismiss the debt. Students must drop classes within refund deadlines to receive a refund.

Since Summer session is so short, the refund period may be the first day of the class, or the day before the first day. Please be sure you are aware of the deadlines for your class.

Since drop deadlines will vary (with or without a refund) depending upon the length of the course, students should look on InSite under **My Class Schedule**. You will also receive a schedule by email to your InSite email account.

Closed and Cancelled Classes

Any class may be closed to further registration when it reaches the maximum size. Additionally, if registration is insufficient in any class, it may be cancelled. For information regarding refunds for cancelled classes, see the refund policy.

Outstanding Debts

If you have an outstanding debt on your record, you will be blocked from registration, from graduation evaluations, degrees being conferred, and/or receiving your diploma until all debts are cleared.

Enrollment fee and nonresident tuition debts may be paid on InSite, or by contacting the Cashier's Office at (925) 473-7502. The hours of operation for phone payments are from 9:00 a.m. to 1:00 p.m. on Tuesdays. Library or Child Study Center debts must be paid by calling the Cashier's Office.

Residency

For purposes of establishing enrollment fees, students are identified as either residents or non-residents.

- **Residents:** those who have lived in California as legal residents for at least one year prior to the first day of a new semester and who can demonstrate intent to remain a California resident. Non-citizens who meet residency requirements and who desire to enroll as a California resident must provide documentation from USCIS.
- **Non-residents:** those who do not meet the California resident requirements. See page 6 regarding tuition for non-California residents.

Nonresident Tuition Exemption (AB 540/AB 68)

A student is exempt from paying nonresident tuition if the student meets all of the following four requirements:

1. The student must have:
 - Attended a combination of California high school, adult school, and California Community College for the equivalent of three years or more, or

- Attained credits earned in California from a California high school equivalent to three or more years of full-time high school course work and attended a combination of elementary, middle and/or high schools in California for a total of three or more years, and
2. The student must have:
 - Graduated from a California high school or attained the equivalent prior to the start of the term (for example, passing the GED or California High School Proficiency exam), or
 - Completed an associate degree from a California Community College, or
 - Completed the minimum requirements at a California Community College for transfer to the California State University or the University of California, and
 3. The student must register as an entering student at, or current enrollment at, an accredited institution of higher education in California, and
 4. The student must file an affidavit with the college or university stating that if the student is a non-citizen without current or valid immigration status, the student has filed an application to legalize immigration status, or will file an application as soon as the student is eligible to do so.

AB 1313

Students who owe enrollment fees or other debts will not be permitted to register for classes and will not receive certificates or degrees until their debts are paid. Graduation applications will be evaluated once the student has met their financial obligations.

Nonresident Tuition Exemption (AB 2000)

Effective January 1, 2015, students may be exempt from paying Nonresident Tuition under AB 540 if they attained credits earned in California from a California high school equivalent to three or more years of full-time high school coursework and a total of three or more years of attendance in California elementary schools, California secondary schools, or a combination of those schools. The student must also have received a diploma or equivalent in California.

AB2210 Exemption

Education Code section 68075.6 grants an immediate nonresident tuition fee exemption to eligible Special Immigrant Visa (SIV) holders and refugee students who settled in California upon entering the United States. This exemption is granted for one year from the date the student settled in California upon entering the United States.

This exemption applies to the following:

- Iraqi citizens or nationals (and their spouses and children) who were employed by or on behalf of the United States Government in Iraq (Pub.L. No. 110-181, § 1244)
- Afghan and Iraqi translators (and their spouses and children) who worked directly with the United States Armed Forces (Pub.L. No. 109-163, § 1059)
- Afghanistan nationals who were employed by or on behalf of the U.S. government or in the International Security Assistance Force (ISAF) in Afghanistan (Pub.L. No. 111-8, § 602)
- Refugee students admitted to the United States under Section 1157 of Title 8 of the United States Code

Nonresident Tuition Exemption (SB 150)

Concurrently enrolled students (high school students enrolled in college classes) who are classified as non-resident students for tuition purposes may be eligible for the SB150 waiver of non-resident tuition while still in high school. Students must be special admit part-time (enrolled in 11 units or less) students who currently reside in California and are attending high school in California. Students wishing to take advantage of this exemption should complete a residency reclassification form and attach a copy of high school transcripts showing current enrollment. Electronic forms are located on InSite in the "Student Forms" tile, as well as on the "Admissions & Records Forms" webpage, and can be submitted to the Admissions & Records Office remotely. If you have questions, please contact Admissions & Records at lmcadmissions@losmedanos.edu or (925) 473-7500.

How to Apply & Register Online and the new InSite App

The Contra Costa Community College District online admissions application service is available 24-hours a day.

APPLY Online

1. Go to our website at www.losmedanos.edu.
2. Click "Future Students".
3. Click "Apply (how to)".
4. Follow the application instructions.

REGISTER Online

1. Go to our website at www.losmedanos.edu.
2. Click on the InSite icon on the home page.
3. Click on the InSite icon on the next page.
4. Log in with your user ID and password.
5. Select one of the choices in the quicklinks.
6. You may register through student planning or one of the registration links.

NEW Portal



InSite app now available at:



Also available at <https://m.4cd.edu>

Nonresident Tuition Exemption (VACA, Veterans Access, Choice and Accountability Act, AB 13)

Veterans who qualify for Chapter 30 or Chapter 33 GI Bill, who live in California and enroll within 3 years of discharge from active duty service of 90 days or more may be eligible for exemption of payment of nonresident tuition.

DACA (Deferred Action for Childhood Arrivals)

Effective June 2014, students who have been given a C33 Visa (Deferred Action for Childhood Arrivals) may qualify for California residency with appropriate documentation. Please contact Admissions & Records for more information.

Special Admit High School Students

Students who are 14 years of age or older and those who have completed the eighth grade or higher are eligible for concurrent enrollment as 'special admit' students. High school students may register in up to seven (7) units in Fall and Spring terms or five (5) units of college coursework in summer with approval of their school principal and parent*. With appropriate approvals, special admit students may register in advanced academic and vocational credit courses (degree applicable courses only).

* Important note: By giving consent, parents of concurrently enrolled high school students agree they understand that the college is an adult learning environment and students are expected to behave accordingly. Additionally, they understand that classes will be taught at the college level and the curriculum and college procedures will not be modified nor will other accommodations be made.

Special Admit Enrollment Policies

Concurrently enrolled high school students may register in college courses with submission of a college application and proper approval forms on a space-available basis. Registration for high school students must be completed online during designated registration dates or anytime later (see registration dates on preceding page).

New special admit students must complete an application online at least 24 hours prior to registration. Continuing special admit students do not need to reapply. All special admit students must submit a completed Special Admit Form at the time of registration. The Special Admit Form must be filled out with student information and classes desired. It must also be signed by the principal or designated counselor at the student's high school. Blank forms will not be accepted.

Special Admit students must electronically submit documentation to the Admissions & Records

Office to verify prerequisites (if required) at the time of registration. Prerequisites are satisfied with a C or better in prerequisite coursework. In progress work will not be accepted.

Open Course Policy

Every course is open for registration to any person admitted to the college who meets the course prerequisites and enrollment procedures.

All courses are offered for college credit; auditing is not permitted.

Duplicate or Conflicting Courses

Students are not permitted to register in more than one section of the same course and may not register in courses that have scheduled meeting times which conflict.

Prerequisites/Advisories

Note: Some courses have prerequisites or advisories included with the course description. These are designated to assist students in the selection of course levels for their maximum success.

Important: To ensure proper placement, prerequisites for all classes will be checked at the time of registration. If you have taken a prerequisite course at an institution other than LMC, unofficial transcripts may be submitted via email to lmcadmissions@losmedanos.edu.

Prerequisites may be challenged through the end of the **fifth** business day of the term. Prerequisite Challenge forms are available via email from the Admissions & Records Office by contacting Rikki Hall at rhall@losmedanos.edu. Students must provide sufficient documentation to substantiate satisfaction of the prerequisite by other means. Once accepted, the student will be conditionally enrolled and the department chair will review the student's request. If approved, the student will remain in the class; if denied, the student will be dropped from the class for lack of prerequisite and enrollment fees will be refunded.

References to "successful completion" implies with a grade of 'C' or better. Courses in progress outside the district will not be accepted as prerequisites. Advisories are recommendations only and need not be verified.

Waitlist

Once courses with a waitlist fill to their maximum capacity, you have the option to add your name to a priority listing in the event drops should occur or the instructor agrees to add late enrollees (at the first class meeting).

Important Waitlist Details

1. All co-requisites or prerequisites must be met before being placed on a waitlist.

2. Once you have added your name to a waitlist, you can check your status (i.e. you are now # 2 of 5 students on the list) by going into "Manage My Waitlist" on InSite. **You should check your status on InSite frequently** to allow yourself the maximum amount of time to register, in the event permission is granted prior to the start of instruction (includes weekends and holidays).
3. If space becomes available in your waitlist course, you will receive notification to your InSite email account that permission has been granted to register. This email and text are a courtesy. You can access the information by checking "Manage My Waitlist". **Waitlist notifications will be sent to the student's college email account. Please check it frequently if you are on a waitlist. Students may now elect to receive text message notifications - opt in at InSite Portal**
4. Once permission is granted, you will have three (3) calendar days to register in the class via InSite (or in-person). **After three calendar days, if you have not registered in the class, your name will be removed from the waitlist** and the next student on the list will be notified that he/she is eligible to fill the open seat. Once your name is removed from the list, you no longer have priority status.
5. If you are on a waitlist at the start of instruction, you must attend the first class meeting to see if there is space available for late enrollment. If you do not attend the first class, you lose your place on the priority listing and another student may be added instead.

If approved, the instructor will grant add authorization. You may enroll on InSite once add authorization has been given.

Please note: Beginning with the first day of instruction, the option to have your name placed on a wait list is no longer available.

Transfer of Credit

If you have previous college experience and would like to transfer other college credit to LMC, you must request an official college transcript to be sent to the LMC Admissions & Records Office (Note: not required if prior coursework is within the CCCC.) Your previous coursework will then be evaluated for prerequisite course information. Students may request an evaluation by submitting a request for a Transcript Evaluation form to evaluations@losmedanos.edu or an evaluation will be completed with submission of a petition for graduation.


Veterans Benefits

Priority registration appointments are available by request to active military personnel and to honorably discharged veterans. Information on veterans benefits is available on the Veterans webpage at www.losmedanos.edu/veterans.

Accuracy and Revisions

Los Medanos College has made every reasonable effort to determine that everything stated in this schedule is accurate. Courses and programs offered, together with other matters contained herein, are subject to change without notice by the administration of Los Medanos College for reasons related to student enrollment, level of financial support, or for any other reason at the discretion of the Contra Costa Community College District and the College. The District and the College further reserve the right to add to, amend or repeal any of their rules, regulations, policies, and procedures consistent with applicable laws. At the time of publication, the fees described in the schedule are accurate. However, at any time, local or state mandated fees may be imposed or increased.

Zero Textbook Cost

Los Medanos College offers Zero Textbook Cost (ZTC) sections of courses. These sections do not require any cost for students to obtain the required textbooks/software for that section. All ZTC sections are indicated in printed and online class schedules with the  symbol.

However, the ZTC status of course sections may change before the start of the class. If a change is made it will be updated on the online schedule of classes. Additionally, if a ZTC indication is removed (and course materials are required to be purchased), all currently enrolled students in that section will be notified of the change via email.

More information regarding the Zero Textbook Cost initiative can be found at www.losmedanos.edu/OER

Add and Drop Deadlines For Summer Classes

1. Add, drop and refund deadlines will vary for Summer classes depending upon the number of class meeting days.
2. You may quickly obtain drop dates for your classes by logging into InSite, click on "My Class Schedule." Next to each course is the last day to drop for a refund, the last day to drop without a 'W' and the last day to drop with a 'W'.
3. For specific add dates: consult the course instructor; check the "My Schedule" tile on InSite; or contact Admissions & Records at lmcadmissions@losmedanos.edu or (925) 473-7500 if you have questions. For refund deadlines, contact the Cashier's Office. In general, deadline dates for Summer and other short-term classes are determined as follows:

- Last date to add
= 10% of the class meetings
- Last date to drop with a refund
= 10% of the class meetings
- Last date to drop with no 'W' on record
= the day before census*
- Last date to petition for P/NP
= 30% of the class meetings
- Last date to drop with a 'W'
= 75% of the class meetings

**Census day = 20% of the class meetings*

Reminder: To receive a refund for a Summer course, students must drop the course within 10% of the total class meetings, which in most cases is the first class meeting.

EFFECTIVE FALL 2014

the State began
mandating
enrollment priorities
as follows

- Veterans, Foster Youth, DSPS, EOPS and CalWORKs will receive the first priority
- New students who have completed assessment, orientation and an educational plan will receive a priority registration appointment
- Continuing students will maintain the current registration appointment system
- All categories of students with priority registration status will lose their registration priority if they exceed 100 units or have two consecutive semesters on probation

Fees & Tuition

Fee Type	Amount	Required
Enrollment Fee	\$46 per unit* (No maximum)	All students**
Non-Resident Tuition	\$290 per unit* (No maximum)	Non-California residents (<i>must be paid in addition to enrollment fee</i>)
Non-U.S. Citizen Tuition	\$290 per unit* (No maximum)	Those non-U.S. citizens who by law cannot establish California residency (<i>must be paid in addition to enrollment fee</i>)
Student Union Fee	\$1 per unit, to a maximum of \$10 per academic year	All students – pays for the construction and maintenance of a student center
Parking Fee Permit***	\$25 for cars \$15 for motorcycles or \$3/day both autos and motorcycles	All vehicles anywhere on campus, including dirt lots, roads, etc., except on weekends and holidays
Transcript Request <i>Rush transcripts are available for an additional fee.</i>	\$7.50 per copy (first two transcripts in district – free)	All students – Payable with written request or request on InSite
Enrollment Verification	Free \$5 \$2	Through InSite 24 hours (in person) 3-4 business days (in person)
Returned Check Fee	\$15	All students – Only cash or cashier's checks will be honored for clearing checks returned for insufficient funds. Records are held until the fee is cleared.
Materials Fee	Vary	Some classes may charge additional fees.

*The District reserves the right to change enrollment and nonresident tuition fees, based on state legislation.

**Special admit students (K-12) are exempt from enrollment fees.

***The District reserves the right to change parking fees based on CCCC Board Policy.

PLEASE NOTE: All eligible CCPG recipients remain responsible for all fees in excess of enrollment fees.

Note: Fees shown are those in effect at the time of publishing and are subject to change*. Fees may be paid in cash, by personal check, VISA, MasterCard, or Discover for the exact amount.

For more information about Financial Aid, see pages 8 & 9 or visit www.losmedanos.edu/financialaid

Student Fee and Enrollment Refunds

Fee refunds for students who withdraw from school or drop classes by the deadline for class add/drop will be automatically calculated at the District Accounting Department. Refund checks for complete or partial withdrawals from school will be processed after the first two weeks of instruction. Refund checks will be mailed to the student address on file on the students account. If the student paid by credit card on InSite, the refund will be processed as a credit to the credit card.

Don't be left behind! If you have a new address, please update your address in InSite immediately! This needs to be done prior to the time of withdrawal or change of program.

A refund will not be made if the student has other outstanding debts to the college. Refund checks will be issued monthly after the first two weeks of instruction each semester. All refund checks will be made payable to the student whether paid by cash, check, money order, cashier's check or credit card. No refund of the enrollment fee will be made to any student who withdraws from classes after the first two weeks of instruction for a full semester class, or after 10% of the class time for a short-term class. As an example, a 10-day course would need to be dropped in just **one day!** And a one-day course would need to be dropped the day before the course.

Students who register and subsequently drop all classes prior to the beginning of the semester may petition for an early refund by contacting the Cashier's Office at (925) 473-7502.

Parking Permit Refunds

Parking permit refunds will be made if the student drops all classes within 10% of the length of Summer courses. **No parking permit refunds after the refund period is over.**

Financial Aid Enrollment Fee Refunds

If subsequent to paying enrollment fees, a student becomes eligible for financial aid and receives an enrollment fee waiver, the student will automatically be mailed a full refund check according to the same refund processing cycle as enrollment fee refunds.

Enrollment Fee Deferments

If subsequent to paying enrollment fees, a student becomes eligible for an enrollment fee deferment to an outside agency, the student must have the document stating the deferment submitted by mail to the Cashier's Office. The student will then automatically be mailed a refund check of the deferred fees within two weeks after the outside agency has been billed.

Details regarding the refund policy are available on the Admissions & Records webpage.

Student Debts to the College

Students are expected to clear their financial debts promptly. Students who owe LMC money for tuition or enrollment fees, overdue library books, returned checks, or other debts will not be allowed to use college services (such as registering for classes or processing graduation) until their debts are paid.

If your debt remains unpaid, Los Medanos College may garnish your California State Tax Return through the State-mandated Chancellor's Office Tax Offset Program (COTOP). In this instance, a 25% administrative fee will be added to your delinquent balance. This balance will be forwarded for collection to the State Franchise Tax Board (FTB). In the event you are owed a State tax refund, win a California Lottery prize,

or have unclaimed property to be distributed to you by the State of California Controller's Office for the upcoming tax year, California State Government Code sections 12419.2, 12419.7, 12419.10, and 12419.11 authorize the Office of the State Controller and the FTB to collect money owed to individuals and redirect these funds to pay the individual's debt owed to the agencies/colleges.



>>>> IMPORTANT NOTE <<<<

You will **NOT** be automatically dropped from classes based on non-attendance or non-payment of fees. Failure to drop your course may result in a failing grade and a debt on your record.

All outstanding debts must be paid in full. Unpaid debts will result in a registration and transcript hold on student records.

>>>>>>>>>>>><<<<<<<<<<<<

3 | GREAT REASONS TO APPLY

- \$\$\$ can help pay for books
- Help pay tuition
- Funds never have to be paid back

Don't delay! Apply today!!!
www.losmedanos.edu/scholarships

STUDY ABROAD

Contra Costa Community College District invites you to participate in our study abroad programs.

London Fall 2020

Study Abroad Office:
 (925) 969-2507 or
 email studyabroad@dvc.edu

YOUR DREAMS ARE TOO IMPORTANT to let college pass you by.

All you need to do is ask...

Financial aid is the way many of today's students pay for college. The Office of Financial Aid can help you apply for state and federal grants, work-study programs and enrollment fee waivers.



LOS MEDANOS COLLEGE FINANCIAL AID

Grants are the primary form of financial aid available at LMC.

Grants are "free" money that students obtain by taking classes. Grants do not have to be paid back and are given to qualified students in the form of a check.

All you need to do is ask.

Office of Financial Aid can assist you in determining your eligibility for grant programs that best meet your individual needs. Start by signing up for a FSA ID at <https://fsaid.ed.gov>. After obtaining a user account, you can begin filling out your Free Application for Federal Student Aid (FAFSA) online at www.fafsa.gov. California Dream Act (AB 540 eligible) students can fill out a Dream Act application to be considered for state aid. Visit <https://dream.csac.ca.gov> to complete an application

Questions? Contact the Financial Aid Office at finaidoffice@losmedanos.edu.

There are several different types of grants available at Los Medanos College.

CALIFORNIA COLLEGE PROMISE GRANT

(Formerly known as the Board of Governors Fee Waiver)

This grant offers a waiver of enrollment fees.

It's easy to apply!

FEDERAL PELL GRANT

Offers up to \$6,195 for full-time undergraduate students pursuing a degree or certificate.

FEDERAL SUPPLEMENT EDUCATIONAL OPPORTUNITY GRANT

Offers up to \$1,000 for students enrolled at least half-time (6 units), and is awarded to those who file by March 2 and have the greatest need.

FEDERAL WORK-STUDY

Offers work on campus in an approved department and funding in the form of a monthly payroll check to assist with educational expenses.

CAL GRANTS B AND C

Offers between \$1,094 and \$1,672, respectively, for students taking 6 units or more. The application period is between October 1 and March 2. If you plan to attend LMC in the Fall, you have a second deadline of September 2.

STUDENT SUCCESS COMPLETION GRANT

Offers between \$1,298 and \$4,000 annually for students who are enrolled full-time (12 units or more) and are current Cal Grant B or C recipients.





FINANCIAL ASSISTANCE

What if you can't afford the fees? We can help you!

We know that paying for college is a big challenge. That is why the Office of Financial Aid is here to help you take advantage of all financial resources that are available.

Apply for free federal and state aid by completing the following steps::

- Visit www.fafsa.gov and complete the 2020-2021 Free Application for Federal Student Aid (FAFSA) and include LMC's school code 010340 in the appropriate section. For first time applicants, you will need to create an FSA ID username and password.
- Apply early! It will take several business days for the Office of Financial Aid to receive and process the FAFSA, so students are encouraged to apply before the semester begins. Once the review process begins, additional documents may be requested from the student.
- Students can view which documents the office is requesting via the Insite portal at m.4cd.edu. Please contact the Financial Aid Office at finaidoffice@losmedanos.edu with any questions.

Financial Aid Disbursement Options

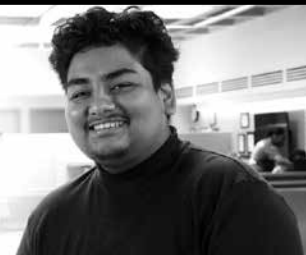
Students now have options in how they receive their financial aid disbursement:

1. Direct Deposit: Funds can be transferred directly to your existing bank account in 1-2 business days.
2. BankMobile Vibe Checking Account: You can open a checking account with the District's disbursement partner BankMobile and receive funds the same business day.

For more information, visit www.4cd.edu/bankmobile/

CCPG

California College Promise Grant
(Formerly known as the Board of Governors Fee Waiver)



WHAT'S A CCPG?

A CCPG, officially called the "California College Promise Grant", is a waiver of enrollment fees provided by the State of California for students who have been California residents for more than one year. Students who are required to pay non-resident tuition or do not meet citizenship requirements do not qualify. There are three ways to qualify for a CCPG. You only need to be eligible for one.

PLAN AHEAD!

Do not wait to apply until you want to register. Processing time for CCPG A & B is three (3) business days. The CCPG C can take up to two (2) weeks. We highly recommend that students apply online: www.losmedanos.edu/financialaid/apps.asp to expedite the process. To apply for a CCPG for Summer 2020, please complete the 2020-2021 application.

WHAT HAPPENS IF I RECEIVE A CCPG?

You will be notified of your CCPG eligibility by award letter. You may also check your eligibility on InSite. If you are eligible for a CCPG A, B, C, or D, your enrollment fees are waived, regardless of how many classes you enroll in. All other fees charged (i.e., Student Union and Parking) remain your responsibility to pay. If you have already paid your enrollment fees and qualify for a CCPG, you will receive a refund of these fees. Refund checks are automatically calculated and mailed to all students. **CCPG recipients may qualify for discounted parking if CCPG is applied before purchasing parking.**

You only need to apply once per academic year.

Applications are due no later than the last day of the semester for which you are applying.

CCPG APPLICATIONS THAT ARE NOT COMPLETE OR ACCURATE WILL NOT BE PROCESSED.

CCPG recipients may qualify for discounted parking.

CCPG A: Provide proof of TANF/CalWORKs, Supplemental Security Income (SSI), or General Relief benefits you receive. Provide income and household size information by completing section B on the back of the CCPG application. If you are considered a dependent, you must provide proof of the benefits your parents are receiving.

Acceptable documentation includes:

- Copy of current official agency verification
- Current eligibility letter

CCPG B: Provide income and household size information by completing section B on the back of the CCPG application.

CCPG C: If you don't qualify for CCPG A or B, you may qualify for CCPG C by completing a 2020-2021 FAFSA.

CCPG D: You may qualify for CCPG D if the financial aid office has verified you have been without a residence in the last 24 months (homeless).

Family size	Total Family 2017 Income	Family size	Total Family 2017 Income
1	\$18,210 or less	5	\$44,130 or less
2	\$24,690 or less	6	\$50,610 or less
3	\$31,170 or less	7	\$57,090 or less
4	\$37,650 or less	8	\$63,570 or less

Add \$6,480 for each additional family member

LMC Programs of Study

PROGRAMS OF STUDY	College Skills Certificate	Certificate of Achievement	Associate Degree	PROGRAMS OF STUDY	Certificate of Competency (non-credit)	College Skills Certificate	Certificate of Achievement	Associate Degree
Administration of Justice		•	AS-T*	Instrumentation Technology			•	AS
Basic Law Enforcement Academy Intensive		•		Transit Electrical Technology			•	
Criminal Investigations		•		Emergency Medical Services		•		
Criminal Law		•		EMS Recertification		•		
Anthropology			AA-T*	Engineering				AS
Appliance Service Technology		•	AS	English				AA-T*
Heating, Ventilation & Air Conditioning Specialist	•			English as a Second Language				
Electrical Appliance Technician	•			Advanced English for Academic & Professional Advancement		•		
Refrigeration Technician	•			Basic Vocabulary & Reading	•			
Art				Essential Pronunciation & Conversation	•			
3D Design		•		Foundational Grammar for General Communication	•			
Art History			AA-T*	Fundamental Writing Skills	•			
Fine Arts			AA	Intermediate English for College & Career Success		•		
Graphic Communications		•	AA	Fire Technology			•	AS
Studio Arts			AA-T*	Basic Fire Academy		•	•	
Automotive Technology		•	AS	Fire Prevention		•		
Air Conditioning Specialist	•			Fire Protection		•		
Automotive Chassis Specialist	•			History				AA-T*
Automotive Diesel Specialist	•			Humanities				AA
Automotive General Maintenance	•			Journalism				AA/AA-T*
Advanced Performance Engine Builder	•			Kinesiology				AA-T*
Powertrain Specialist	•			Liberal Arts				
Smog Technician Specialist	•			Arts and Humanities				AA
Biology			AS-T*	Behavioral Science and Social Science				AA
Business		•	AS	Math and Science				AA
Accounting		•	AS	Management and Supervision			•	AS
Business Administration			AS-T*	Mathematics				AS-T*
Business Information Professional Level I	•			Elementary Algebra and Arithmetic	•			
Business Information Professional Level II	•			Elementary Algebra and Prealgebra	•			
Small Business Management and Operations		•	AS	Music				AA/AA-T*
Chemistry			AS-T*	Nursing				
Child Development		•	AS-T*	Registered				AS
Assistant Teacher Permit Coursework	•			Vocational			•	
Associate Teacher Permit Coursework	•			Philosophy				AA-T*
Curriculum in Early Childhood Specialization Certificate	•			Physics				AS-T*
Specialization – Infant Toddler Care	•			Political Science				AA-T*
Specialization – School Age Care	•			Process Technology			•	AS
School-Age Development & Education Skill Certificate	•			Bridge to Advanced Manufacturing		•		
School-Age Associate Teacher	•			Psychology				AA-T*
Specialization Administration of Director Early Childhood Programs	•			Recording Arts			•	AA
Specialization - Special Needs Care & Education	•			Recording Arts Level 1		•		
				Recording Arts Level 2		•		
Communication Studies			AA-T*	Social Justice Studies				
Computer Science			AS-T*	African American Studies				AA-T*
Computer Applications Specialist		•		Chicano/a Studies				AA-T*
Computer Support Specialist			AS	LGBTQ Studies				AA-T*
Computer Support Specialist (Advanced)		•		Sociology				AA-T*
Computer Support Specialist (Basic)		•		Transfer Studies				
Computer Science – Core Competencies Foundation	•			CSU GE			•	
Game Design	•			IGETC			•	
Networking and Security			AS	Travel Marketing		•	•	AS
Networking and Security (Advanced)		•		Cruise Specialist		•		
Networking and Security (Basic)		•		Home-Based Travel Specialist		•		
Certified PC Repair Technician	•			Welding Technology			•	AS
Web Design	•			Welding Pre-Apprenticeship		•		
Drama				World Languages				
Acting			AA	American Sign Language			•	AA
Theatre Arts			AA-T*	Cultural Competence in Modern World Language		•		
Electrical/Instrumentation Technology				Spanish			•	AA-T*
Electrical Technology		•	AS					

See the Los Medanos College Catalog for information on LMC program requirements.

*Degrees designed especially for those who plan to transfer to a California State University (CSU) campus.



insite

NEED information? Think InSite first!

- ▶ Access InSite
- ▶ Check Student Email
- ▶ Get College News

InSite is the College's customized student portal, which provides access to InSite Mail (the official student email system). Check your InSite page and InSite Mail account regularly.

All communications from the College will be delivered to either your InSite Mail or posted on your InSite including:

- Online payment receipts
- Schedule changes
- Notification of Eligibility to Register from the Waitlist
- All communications from faculty
- Urgent messages from the College (emergencies, etc.)
- And much more

Visit

www.4cd.edu/insite/faqs.aspx
for InSite and InSite Mail FAQs.

Important features of InSite Mail

- Students are responsible for reading and responding to official communications sent to their InSite Mail account.
- Never worry about having access to Word again! Edit, compose, and share online documents with Office WebApps.
- Email forwarding to another account recommended.
- Set up instant alerts via text message when important items are delivered to your inbox.
- You'll have a genuine ".edu" email address which adds a professional touch to your resume.

How to activate your account

- Log on to InSite portal.
- Click on "Check my InSite Mail" to activate your new email account
- Your InSite Mail address is your user name @insite.4cd.edu



Set up instant alerts via text message.

Get the InSite App



The newest, easiest way to access your:

- Class Schedule
- Education Plan
- Registration Links
- Campus maps
- Canvas
- Grades
- Cancelled Classes
- Manage My Waitlist
- ...and More!



Also available at: <https://m.4cd.edu>



HOW TO REGISTER ONLINE

Who

You may register online* on InSite if:

- You are a continuing student from the Summer 2019, Fall 2019, Spring 2020, or
- You have submitted an application for the Summer 2020 semester.

*Excludes high-school students, who must register and provide forms in person.

When

- Registration online in semester-length and short-term classes is available on or after your registration appointment time and date, up through the day before classes begin. You may register for classes using Student Planning (prior to the beginning of classes) or InSite. After the start date of the course, if the instructor grants you an add authorization, you may enroll on InSite.

How to register online on InSite

When you click on InSite, you will see blue buttons on the left side. To find out how to access InSite, click on the button that says "Login Instructions". These instructions will demonstrate how to log into InSite and how to manage your user account.

You First Login

- Update your password
- Provide your **Challenge answers**
- Enroll your **Mobile Phone Using Text or Voice Message**
- Choose your **Cell Phone Message Options**

You will be logged into InSite

- **Verify your registration date** on the registration date tile
- Click the **Registration Tile**
- If you know which courses you want, you can use **Express Registration**. You may access a course by entering a section number and term.
- Click on **Search for Sections** or **Search and Register**.
- Select the location, the term and other search criteria to locate classes.
- Register for **Previously Selected Sections** page (this is like using a shopping cart to select your classes), choose an action (register) for each course under the preferred sections list and click on the **Submit** button. (Please note: If the course is filled, a red message will appear at the top of this screen.)

- If a course is filled you may choose to put yourself on the waitlist (see waitlist instructions).
- If the course does not have a waitlist or the waitlist is filled, you will need to check back frequently for space in the class.
- Click on my class schedule to print a copy for your records.
- Under the Main menu, click on **Student Account Information**, then click on **Make a Payment** (by credit card) or send a check to the Cashier's Office, Los Medanos College, 2700 E. Leland Road, Pittsburg, CA 94565

On InSite you are able to:

- Check your student email
- See your scheduled classes
- See important dates
- Use student planning to view your progress toward a degree or certificate and plan your courses

Fee Payment

- Fees may be paid by check or credit card (VISA, MasterCard or Discover).
- If you pay by check, mail your check to the Cashier's Office. Write your ID number on the check.

Note Regarding Financial Assistance

If you are receiving financial assistance through the college, your fee waiver must be processed before you register for classes.

Register using the Mobile App Ellucian Go

- Locate the Ellucian Go app in the **Apple "App Store"** or **Google "Play Store"**.
- Download and install Ellucian Go.
- Launch Ellucian Go. **Note:** Apple devices will prompt you to allow Notifications. Click OK to allow and continue.
- Choose your college from the list, or type your college name into the search box.
- Installation is complete after you select your college. You will be prompted to enter your InSite username and password to access items on the menu that require you to log in.

Important Note: You will NOT be automatically dropped from classes based on non-attendance or nonpayment of fees. Failure to drop your course may result in a failing grade and a debt on your record.

All outstanding debts must be paid in full. Unpaid debts will result in a registration hold on student records.

COMO REGISTRARSE POR INTERNET

Quién

Puede registrarse por Internet* en su página de InSite si:

- Actualmente está registrado como estudiante continuo desde el semestre de Verano 2019, Otoño 2019, Primavera 2020, o
- Ha sometido una solicitud para el nuevo semestre de Verano 2020.

*Excluye a estudiantes de nivel secundaria (high school), los cuales deben presentar sus formas en persona.

Cuándo

- Podrá registrarse por Internet para cursos semestrales o de periodos cortos a partir del día y horario de su cita de registro, hasta el día anterior del comienzo de clases. Puede registrarse para cursos antes del comienzo de las clases utilizando "Student Planning" (El Plan de Estudiante) o por InSite. Después del comienzo de clases, necesitará una autorización del instructor. El instructor dará el permiso por internet para poder registrarse para sus cursos.

Como registrarse por Internet en InSite

- De la página principal (www.losmedanos.edu), haga clic en InSite/ WebAdvisor. Verá botones azules en el lado izquierdo de la página. Seleccione el botón que dice "Logon Instructions." A través de este botón, podrá ver las instrucciones para iniciar su sesión en InSite y como poder manejar su cuenta de estudiante.

Primero inicie su cuenta estudiantil

- Inicie un nueva contraseña
- Proporcione sus preguntas de seguridad
- Introduzca su teléfono móvil usando texto y mensaje de voz
- Escoja las opciones para recibir mensajes por celular

Iniciar su sesión en InSite

- Verifique su fecha de registración en el cuadro que dice fecha de registración
- Haga clic en el cuadro registración
- Si ya sabe los códigos de sus clases, puede utilizar "Express Registration" (Registración Express). Introduzca los números del código del curso y seleccione el semestre apropiado.
- Si necesita buscar las clases, dirjase a buscar los códigos donde dice "Search for Sections."
- Elija el colegio donde quiere asistir, el semestre, el año, e información y datos requeridos.
- Para registrarse para **secciones que ya había seleccionado, elija** "Previously Selected Sections." (Esto es como un carrito de compra que contiene las clases que seleccionó previamente pero no han sido registradas.) Para registrarse, escoja la acción "Register" para cada una de las clases en "Preferred Sections List" y seleccione "Submit" para completar su transacción. (Nota: si el curso está lleno, un mensaje en color rojo aparecerá en la parte de arriba de la pantalla.)

- Si el curso está lleno, puede agregarse a la lista de espera llamada "Waitlist." (Por favor mire las instrucciones de la lista de espera.)
- Si la clase no tiene lista de espera o está llena, tendrá que revisarla frecuentemente para chequear si se abrió cupo.
- Haga clic en "My Class Schedule" (Mi lista de clases) para imprimir una copia de su horario de clases.
- Dirjase al "Main Menu" (Menu Principal) y elija "Student Account Information" (Información de la Cuenta de Estudiante), y haga clic en "Make a Payment" (Haga Pago) para pagar su cuenta. Puede pagar con tarjeta de crédito o puede enviar un cheque por correo a: Cashier's Office, Los Medanos College, 2700 East Leland Road, Pittsburg, CA 94565.

En su Insite puedes:

- Ver su correo electrónico
- Mirar su horario de clases
- Mirar las fechas importantes
- Usar el plan de estudios para ver su progreso hacia su título de asociado o certificado y planificar sus cursos.

Pago de Cuotas

- Las cuotas pueden ser pagadas con cheque o tarjeta de crédito (Visa, MasterCard o Discover.)
- Si paga con cheque, envíelo por correo a la Oficina del Cajero (Cashier's Office). Escriba su número estudiantil en el cheque.

Notas Sobre Ayuda Financiera

Si recibe ayuda financiera por medio del colegio, sus tramites de ayuda financiera deben ser procesados antes de registrarse para cursos.

Nota Importante: NO se le dará de baja automáticamente por no asistir a sus clases o por no haber pagado los cargos. Usted es responsable por darle de baja a sus clases. No darse de baja puede resultar en calificaciones no aprobatorias y una deuda en su cuenta estudiantil.

Todos los cargos deben ser pagados en su totalidad. La falta de pago de estos cargos se penalizará con una restricción sobre su cuenta estudiantil.

Registración usando la Aplicación Móvil Ellucian Go

- Localiza la aplicación Ellucian GO en **Apple "App Store"** o en **Google "Play Store"**.
- Instala o baja la aplicación Ellucian Go.
- **Nota:** Haz clic en Ok para permitir y continuar con las notificaciones para aparatos de Apple.
- En la lista selecciona tu colegio, o escribe el nombre de tu colegio en la caja de búsqueda "Search box".
- La instalación estará completada una vez que selecciones tu colegio. Para entrar en tu Insite tendrás que poner tu nombre de usuario y contraseña.

Nota Importante: NO se le dará de baja automáticamente por no asistir a sus clases o por no haber pagado. Sin embargo, No darse de baja puede resultar en calificaciones no aprobatorias y una deuda en su currículo.

Todos los cargos deben ser pagados en su totalidad. Cargos no pagados resultara en restricción de registros y prohibición a su cuenta y currículo de estudiante.

Online Courses - Summer Session

New to online classes? Not that experienced with computers and the internet?

We highly recommend going through these two steps by going to: www.losmedanos.edu/onlineclasses

1. a. Are you ready for an online class?
Take a quiz to see if an online course fits your needs. Check to make sure you have the computer skills you'll need to succeed.

b. Is your computer ready?
Make sure your computer and internet connection are up to speed.

2. Some things to know about online classes at LMC
a. Get to your online classroom at www.losmedanos.edu/onlineclasses.
b. Your username and initial password are the same as for InSite.

c. Online courses begin the first day of class. Your online classroom will not be accessible before that date.
d. Check to see if the instructor for your class has any special instructions.

How to Read This Schedule

SEC	DAYS	HOURS	ROOM	INSTRUCTOR	DATES
-----	------	-------	------	------------	-------

BIOLOGICAL SCIENCE

BIOSC-020 Principles of Biology: Cellular Processes - 5 Units
PREREQUISITE: MATH-029, MATH-030 or equivalent
ADVISORY: BIOSC-010, High school biology, chemistry
 LMC Degree: DA
 Transfer: UC; CSU Gen. Ed. Area B2, B3; IGETC Area 5B

As an integrated study of life forms, primarily of plants and animals, this course focuses on the cellular structures and physiology of these life forms. Laboratory experiences will supplement lecture material. Required for biological science majors. LR

0832	MW	8:00-10:25am	SC1-136	Rickman, J	Semester
	MW	10:30-12:35pm	SC1-130		
Brentwood Center					
9643	TTH	8:00-9:25am	BRT-12	Bouchard, J	Semester
	TTH	9:30-12:35pm	BRT-18		

COMPUTER SCIENCE

COMSC-012 Introduction to Network Security - 3 Units
ADVISORY: Eligibility for ENGL-100

Due to the number of attacks, hacks, and viruses, computer security should be the number one concern for computer users today. This course provides an introduction to Internet Security issues, including hacking, firewalls, and encryption. SC

0884	ONLINE		Smith, C		10/17-12/16
		+ 3 hours by arrangement each week			

- Course number, course title, & number of units
- Prerequisites are required courses that must be completed prior to enrollment.
- Advisories are recommended courses to take prior to enrollment in a specific course
- LMC DEGREE: DA means that this course is LMC degree applicable.
- The TRANSFER area tells you what areas of CSU and/or UC transfer this course satisfies.
- Section number needed for enrollment
- Days of the week the course is taught—M=Monday, T=Tuesday, W=Wednesday, TH=Thursday, F=Friday, S=Saturday,
- Time the course is taught, note that some courses have more than one start and stop time.
- Room where the course is taught; see map inside back cover for location.

SC1-136

building level room #
 BRT - Brentwood Center MA - Math Building
 CC - College Complex MU - Music Building
 CO - CORE Building PE - Physical Education Complex
 CS - Child Study Center SC - Science
 EL - ETEC Lab SS - Student Services Building
 GYM - Gymnasium
 LIB - Library Building

- SC- Student choice; credit/no credit option, by petition
- Name of instructor
- Online Course
- Additional hours or lab time are required.
- Start and stop dates of course if different from normal semester length courses.

SEC DAYS HOURS ROOM INSTRUCTOR DATES

SEC DAYS HOURS ROOM INSTRUCTOR DATES

ADMINISTRATION OF JUSTICE

ADJUS-110 Introduction to the Criminal Justice System - 3 Units

ADVISORY: Eligibility for ENGL-100

LMC Degree: ADR: Social and Behavioral Sciences; DA

Transfer: UC; CSU Gen. Ed. Area D; IGETC Area 4H, 4J; C-ID AJ 110

This course introduces students to the characteristics of the criminal justice system in the United States. Focus is placed on examining the integrated, interdisciplinary methods of crime measurement, theoretical explanations of crime, responses to crime, components of the system, and current challenges to the justice system and the evolving forces that have shaped those principals and approaches. Although justice structure and process is examined in a cross cultural context, emphasis is placed on the United States justice system, particularly the structure and function on United States police, courts, and corrections. Students are introduced to the origins and development of criminal law, legal process, and sentencing and incarceration policies. May not be repeated. LR

Online and Hybrid Sections

0148 ONLINE Hailey, A Semester

This is an ONLINE section for 9 hours each week. Email instructor at ahailey@losmedanos.edu if you have questions.

9505 ONLINE Hailey, A Semester

This is an ONLINE section for 9 hours each week. Email instructor at ahailey@losmedanos.edu if you have questions.

ADJUS-160 Community & the Justice System - 3 Units

ADVISORY: ADJUS-110; eligibility for ENGL-100

LMC Degree: ADR: Social and Behavioral Sciences; Ethnic/Multicultural Studies; DA

Transfer: UC, CSU Gen. Ed. Area D; C-ID AJ 160

This course is a theoretical and conceptual overview of multicultural concepts and issues, including those relating to culture, racial, gender, age, and sexual orientation and how their applications are put into place in criminal justice disciplines (law enforcement, the court system, and corrections). The identification of problems related to our increasingly diverse population will be examined and strategies analyzed to overcome those problems particularly related to the maintenance of social order. Conflict resolution and problem solving techniques are applied. Criminal justice agency hiring practices are defined and examined. May not be repeated. SC

Online and Hybrid Sections

0419 ONLINE Hailey, A Semester

This is an ONLINE section for 9 hours each week. Email instructor at ahailey@losmedanos.edu if you have questions.

ANTHROPOLOGY

ANTHR-006 Cultural Anthropology - 3 Units

ADVISORY: ENGL-100

LMC Degree: ADR: Social and Behavioral Sciences; DA

Transfer: UC; CSU Gen. Ed. Area D; IGETC Area 4A; C-ID ANTH 120

This course is an introduction to the study of cultural anthropology which focuses on a broad view of the learned aspects of human life. The course includes the observations and analysis of cultural traditions, i.e. child-rearing processes, life styles types and adaptations, social and family organizations, creative elements of human life, and basic anthropological theories and concepts. Students will be exposed to divergent cultures and to the status of today's vanishing cultures. Opportunities for the development of skills in critical thinking, problem-solving and effective learning will be provided throughout the course. May not be repeated. SC

Online and Hybrid Sections

9512 ONLINE Padilla-Wilson, L Semester

This is an ONLINE section for 9 hours each week. Email instructor at lpadillawilson@losmedanos.edu if you have questions.

9545 ONLINE Padilla-Wilson, L Semester

This is an ONLINE section for 9 hours each week. Email instructor at lpadillawilson@losmedanos.edu if you have questions.

ART / GRAPHIC COMMUNICATIONS

ART-005 The Visual Arts - 3 Units

ADVISORY: Eligibility for ENGL-100

LMC Degree: ADR: Arts and Humanities; DA

Transfer: UC; CSU Gen. Ed. Area C1; IGETC Area 3A

An interdisciplinary course that focuses on the creative process. Course content provides an overview of visual art from a variety of cultures looked at via thematic and technical perspectives. Learning and using the vocabulary of design to analyze and evaluate art is also emphasized. Meets Creative Art Requirement for General Education. May not be repeated. SC

Online and Hybrid Sections

0017 ONLINE Nabas, N Semester

This is an ONLINE section for 9 hours each week. Email instructor at nnabas@losmedanos.edu if you have questions.

9504 ONLINE Staff, L Semester

This is an ONLINE section for 9 hours each week.

ART-018 Art of the Ancient Americas - 3 Units

ADVISORY: Eligibility for ENGL-100

LMC Degree: ADR: Arts and Humanities, DA

Transfer: UC; CSU Gen. Ed. Area C2; IGETC Area 3B

An integrated, interdisciplinary survey of art as an aspect of cultures and civilizations from North and South America from prehistory through the 16th century. Investigates how art and architecture reflect the religious, political and philosophical perspectives of the artists and societies that created them. Meets Arts and Humanities requirement for general education. May not be repeated. LR

Online and Hybrid Sections

0089 ONLINE Nabas, N Semester

This is an ONLINE section for 9 hours each week. Email nnabas@losmedanos.edu if you have questions.

ART-020 Introduction to Drawing - 3 Units

ADVISORY: ART-010 or equivalent

LMC Degree: DA

Transfer: UC, CSU; C-ID ARTS 110

This is a studio art course that focuses on basic drawing skills and the conventions of representational, two-dimensional art. Line, shape, value, texture, illusionistic depth, and the figure will be explored using various dry and wet drawing media. Emphasis will be on fundamental skills that the student can use in the development of a personal approach to drawing. Lectures will reflect contemporary and historical uses of drawing and its various applications within the wider field of art. An optional material fee may be applied. May not be repeated. SC

Online and Hybrid Sections

0019 ONLINE Sanchez, E Semester

This is an ONLINE section for 18 hours each week. Email instructor at esanchez@losmedanos.edu if you have questions.

BIOLOGICAL SCIENCE

SEC	DAYS	HOURS	ROOM	INSTRUCTOR	DATES
ART-066	Introductory Hand-built Ceramics - 3 Units				
<i>ADVISORY: ART-011</i>					
<i>LMC Degree: DA</i>					
<i>Transfer: UC; CSU</i>					
This course explores the use of hand-building with clay as an expressive and utilitarian medium. Lectures will highlight the use of this versatile medium from contemporary, western and non-western cultures and historical perspectives, and students will research and discuss historical examples and apply them to their projects. Various forms will be investigated along with an introduction to kiln firing and glaze mixing. This course will introduce development of personal imagery as well as ceramic design, decoration, and glazing. Lab assignments focus on hand-building techniques and glazing. An mandatory material fee will be applied. Students will purchase clay and tools. May not be repeated. SC					
Online and Hybrid Sections					
0025	ONLINE			Bassett, I	Semester
<i>This is an ONLINE section for 18 hours each week. Email instructor at ibassett@losmedanos.edu if you have questions.</i>					

ART-085	Introduction to Animation - 3 Units				
<i>LMC Degree: DA</i>					
<i>Transfer: UC, CSU</i>					
Studies and practice in three-dimensional computer-based animation with emphasis on the definition of, research for, and solutions to animation problems. Includes basic history of animation. Using industry standard routines and analyses, this course develops students' understanding of motion and visual effects generated in 3D scenes. Special emphasis will be placed on animation styles, production pipelines, and story development. May not be repeated. SC					
Online and Hybrid Sections					
0044	ONLINE			Carriere, T	Semester
<i>This is an ONLINE section for 18 hours each week. Email instructor at tcarriere@losmedanos.edu if you have questions.</i>					

BIOLOGICAL SCIENCE

BIOSC-005	Biology of Health - 3 Units				
<i>LMC Degree: ADR: Natural Sciences; DA</i>					
<i>Transfer: UC; CSU Gen. Ed. Area E</i>					
This is an introductory course that covers the biological concepts and principles underlying human health and illness. We will cover not only the basic functions of the human cardiovascular, respiratory, nervous, digestive, immune, and reproductive systems, but also the effects of diet, exercise, prescription and illicit drugs, and stress on these systems and how you can make changes to improve your health. The course includes up-to-date information on biological and medical discoveries related to human health. In addition, we will discuss issues related to mental health, addiction, and sexually transmitted diseases. The local and global health consequences of some human practices will also be explored. Hands-on activities will serve to demonstrate concepts that are critical to the health and wellbeing of the whole individual. May not be repeated. LR					
Online and Hybrid Sections					
4348	ONLINE			Kenrick, M	Semester
<i>This is an ONLINE section for 12 hours each week. Email instructor at mkenrick@losmedanos.edu if you have questions.</i>					
4347	ONLINE			Kenrick, M	Semester
<i>This is an ONLINE section for 12 hours each week. Email instructor at mkenrick@losmedanos.edu if you have questions.</i>					

SEC	DAYS	HOURS	ROOM	INSTRUCTOR	DATES
BIOSC-010	General Biology - 4 Units				
<i>ADVISORY: MATH-012 or higher; eligibility for ENGL-100</i>					
<i>LMC Degree: ADR: Natural Sciences; DA</i>					
<i>Transfer: UC; CSU Gen. Ed. Area B2, B3; IGETC Area 5B, 5C</i>					
An integrated study of life forms with weekly laboratory activities. The course will focus on biological concepts, principles, and laws pertaining to life processes, as well as the scientific method used to investigate these processes. Throughout the course students will be encouraged to apply their critical thinking abilities to investigate the connections between biological theories and real world observations. This course meets the General Education Requirement for Lab Science. May not be repeated. LR					
Online and Hybrid Sections					
0039	ONLINE			Boaz, B	Semester
<i>This is an ONLINE section for 21 hours each week. Email instructor at bboaz@losmedanos.edu if you have questions.</i>					
4351	ONLINE			Heischman, R	Semester
<i>This is an ONLINE section for 21 hours each week. Email instructor at rheischman@losmedanos.edu if you have questions.</i>					
9538	ONLINE			Blaisdell, G	Semester
<i>This is an ONLINE section for 21 hours each week. Email instructor at gblaisdell@losmedanos.edu if you have questions.</i>					

BIOSC-030	Introduction to Anatomy and Physiology - 4 Units				
<i>ADVISORY: Eligibility for ENGL-100</i>					
<i>LMC Degree: DA</i>					
<i>Transfer: UC, CSU</i>					
This course is designed to cover basic anatomy and physiology. Fundamentals of body structure and function and the elegant interrelationships between body organs and how they perform will be explored. All of the systems of the body, including very basic microscopic anatomy and simple physiological chemistry will be covered in this one semester course. May not be repeated. LR					
Online and Hybrid Sections					
0220	ONLINE			Pevzner, A	Semester
<i>This is an ONLINE section for 18 hours each week. Email apevzner@losmedanos.edu if you have questions.</i>					
9542	ONLINE			Smith, M	Semester
<i>This is an ONLINE section for 18 hours each week. Email instructor at msmith@losmedanos.edu if you have questions.</i>					

BUSINESS

BUS-027	Small Business Management - 3 Units				
<i>ADVISORY: Eligibility for ENGL-100</i>					
<i>LMC Degree: DA</i>					
<i>Transfer: CSU</i>					
This course combines theory with the practical "real world" aspects of the organization, planning, operation, and management of small business in the American Free Enterprise System. The course is designed for students who (1) have an idea for a new venture and have assessed its feasibility or, (2) are now involved in managing a small business and would like to expand the business or, (3) are involved in managing a department/division of an existing medium to large sized enterprise. In this course, emphasis is placed on managing a business or department through careful planning. Students will write a business plan, and learn how the plan can be used to manage a business or department/division. May not be repeated. SC					
Online and Hybrid Sections					
0060	ONLINE			Wilkins, P	Semester
<i>This is an ONLINE section for 9 hours each week. Email instructor pwilkins@losmedanos.edu if you have questions.</i>					

SEC	DAYS	HOURS	ROOM	INSTRUCTOR	DATES
-----	------	-------	------	------------	-------

BUS-092 Business Ethics - .5 Unit

ADVISORY: Eligibility for ENGL-100

LMC Degree: DA

Transfer: CSU

A primary goal of this course is to help students define ethics, recognize the characteristics of an ethical organization and identify what it means to be an ethical employee. Students think through ethical issues that arise in the workplace and identify methods that they can employ as individuals to facilitate ethical organizational change. May not be repeated. P/NP

Online and Hybrid Sections

4000	ONLINE	Winkler, L	6/22-7/12
------	--------	------------	-----------

This class requires 3 weeks of asynchronous Canvas Discussions running from June 22- July 12 and three 1-hour live Zoom class sessions from 6:30-7:30PM on Tues June 23, 30, & July 7

BUS-093 Dealing with Difficult People - .5 Unit

ADVISORY: Eligibility for ENGL-100

LMC Degree: DA

Transfer: CSU

In this class, students explore why "difficult" people act the way they do, and learn strategies for getting along and communicating tactfully with the "difficult" people they encounter in the workplace. They will learn how to identify different personality types and why some personality types may be difficult for them to work with peacefully. Emphasis is placed on helping students recognize that often they are the "difficult" person in the workplace. Students learn that dealing with "difficult" people leads to conflict, then they learn conflict resolution techniques, and develop skills to constructively manage conflict in today's diverse and increasingly complex workplace. May not be repeated. P/NP

Online and Hybrid Sections

0108	ONLINE	Winkler, L	6/22-7/12
------	--------	------------	-----------

This class requires 3 weeks of asynchronous Canvas Discussions running from June 22- July 12 and three 1-hour live Zoom class sessions from 6:30-7:30PM on Thurs 25, July 2, & 9.

BUS-109 Introduction to Business - 3 Units

ADVISORY: BUS-018 and BUS-035C or BUS-035; eligibility for ENGL-100

LMC Degree: DA

Transfer: UC, CSU; C-ID BUS 110

A contemporary overview of major topics and main fields in business: marketing, managing, accounting, law, entrepreneurship, international trade, information and risk management. Builds a strong foundation for students to take more advanced business classes as well as provides a broad overview of how the fields are interconnected. The course places these activities within the context of the legal requirements, historical forces, cultural values, ethical considerations, economic systems and social forces of various business regions of the world. May not be repeated. SC

Online and Hybrid Sections

0111	ONLINE	Wilkins, P	Semester
------	--------	------------	----------

*This is an ONLINE section for 9 hours each week.
Email pwilkins@losmedanos.edu if you have questions.*

1024	ONLINE	Wilkins, P	Semester
------	--------	------------	----------

*This is an ONLINE section for 9 hours each week.
Email pwilkins@losmedanos.edu if you have questions.*

SEC	DAYS	HOURS	ROOM	INSTRUCTOR	DATES
-----	------	-------	------	------------	-------

BUS-160 Personal Finance - 3 Units

ADVISORY: BUS-003 or MATH-012; eligibility for ENGL-100

LMC Degree: DA

Transfer: CSU

This is an introductory personal finance course designed to help students become financially literate, and to learn decision-making strategies integral in controlling one's financial destiny. The course covers the following topics: steps in building a personal financial plan; goal setting; budgeting; evaluating financial institution services; consumer credit; life's major purchases; insurance types, needs and products; investing basics, equity and debt vehicles; income tax strategies; and retirement and estate planning. May not be repeated. SC

Online and Hybrid Sections

0112	ONLINE	Wilkins, P	Semester
------	--------	------------	----------

*This is an ONLINE section for 12 hours each week.
Email pwilkins@losmedanos.edu if you have questions.*

0118	ONLINE	Wilkins, P	Semester
------	--------	------------	----------

*This is an ONLINE section for 12 hours each week.
Email pwilkins@losmedanos.edu if you have questions.*

BUS-294 Business Law - 3 Units

ADVISORY: BUS-109; eligibility for ENGL-100

LMC Degree: DA

Transfer: UC, CSU; C-ID BUS 120

This course includes a study of the legal environment of business and the basic principles of business law. Included are contracts, agency, employment, sales, property, forms of ownership, courts, and court procedures. May not be repeated. SC

Online and Hybrid Sections

0122	ONLINE	Wilkins, P	Semester
------	--------	------------	----------

*This is an ONLINE section for 9 hours each week.
Email instructorpwilkins@losmedanos.edu if you have questions.*

CHILD DEVELOPMENT**CHDEV-001 Principles and Practices of Teaching Young Children - 3 Units**

ADVISORY: Eligibility for ENGL-100

LMC Degree: DA

Transfer: CSU; C-ID ECE 120

An examination of the underlying theoretical principles of developmentally appropriate practices applied to early childhood care and education programs and environments, emphasizing the key role of relationships, play, constructive adult-child interactions, and teaching strategies in supporting physical, social, creative and intellectual development for all children. This course includes a review of the historical roots of early childhood programs and the evolution of the professional practices promoting advocacy, ethics and professional identity. May not be repeated. SC

Online and Hybrid Sections

0047	ONLINE	Carter, C	Semester
------	--------	-----------	----------

*This is an ONLINE section for 9 hours each week.
Email ccarter@losmedanos.edu if you have questions.*

COMPUTER SCIENCE

SEC	DAYS	HOURS	ROOM	INSTRUCTOR	DATES
CHDEV-010	Child Growth and Development - 3 Units				
<i>ADVISORY: Eligibility for ENGL-100</i>					
<i>LMC Degree: ADR: Social and Behavioral Sciences; DA</i>					
<i>Transfer: UC; CSU Gen. Ed. Area D, E; IGETC Area 4G; C-ID CDEV 100</i>					
This course examines the major physical, psychosocial, and cognitive/language developmental milestones for children, both typical and atypical, from conception through adolescence. There will be an emphasis on interactions between maturational processes and environmental factors while studying developmental theories and research methodologies. Students will observe children, evaluate individual differences and analyze characteristics of development at various stages. May not be repeated. SC					
Online and Hybrid Sections					
0040		ONLINE		Bell-Dent, D	Semester
<i>This is an ONLINE section for 9 hours each week.</i>					
<i>Email dbell@contracosta.edu if you have questions.</i>					
0042		ONLINE		Ratkewicz, V	Semester
<i>This is an ONLINE section for 9 hours each week.</i>					
<i>Email vratkewicz@losmedanos.edu if you have questions.</i>					
0043		ONLINE		Jones, E	Semester
<i>This is an ONLINE section for 9 hours each week.</i>					
<i>Email ejones@losmedanos.edu if you have questions.</i>					
0028		ONLINE		Herndon, C	Semester
<i>This is an ONLINE section for 9 hours each week.</i>					
<i>Email cherndon@losmedanos.edu if you have questions.</i>					
9501		ONLINE		Hunt, C	Semester
<i>This is an ONLINE section for 9 hours each week.</i>					
<i>Email chunt@losmedanos.edu if you have questions.</i>					

CHDEV-020	Child, Family and Community - 3 Units				
<i>ADVISORY: Eligibility for ENGL-095</i>					
<i>LMC Degree: ADR: Social and Behavioral Sciences; DA</i>					
<i>Transfer: UC; CSU Gen. Ed. Area D; C-ID CDEV 110</i>					
This course examines the development of a psycho-social understanding of the child as a member of the family and as part of the community; patterns of family living in contemporary society; roles and interrelationships; diversity in both the family, community and the issues that go along with it. Required for CHDEV majors. Satisfies Dept. of Social Services Category II. May not be repeated. SC					
Online and Hybrid Sections					
0041		ONLINE		Rivera, O	Semester
<i>This is an ONLINE section for 9 hours each week.</i>					
<i>Email orivera@losmedanos.edu if you have questions.</i>					

COMPUTER SCIENCE

COMSC-060	Information Technologies - 4 Units				
<i>ADVISORY: COMSC-040; eligibility for ENGL-100</i>					
<i>LMC Degree: DA</i>					
<i>Transfer: CSU</i>					
This course presents technology tools and applications essential to fully participate in the contemporary electronic workplace. Students will be introduced to fundamental concepts and basic applications of word processing, electronic worksheets, database management, presentation software, and communications software. The course will also include working with other common technologies such as wireless, virtualization and cloud computing. May not be repeated. LR					
Online and Hybrid Sections					
0102		ONLINE		Jones, S	Semester
<i>This is an ONLINE section for 24 hours each week.</i>					
<i>Email instructor at sajones@losmedanos.edu for further information.</i>					

SEC	DAYS	HOURS	ROOM	INSTRUCTOR	DATES
COMSC-121	Introduction to Cybersecurity –Ethical Hacking - 3 Units				
<i>ADVISORY: COMSC-120; COMSC-040</i>					
<i>LMC Degree: DA</i>					
<i>Transfer: CSU</i>					
There is an exponential growth in the Information Technology sector for trained security specialists with in-depth knowledge and experience analyzing data and securing networks, computers and mobile devices. Learning techniques of threat management and incident response is mission critical to prevent data breaches. This course prepares students for an entry level I/T position focused on network and security which is required for many Information System Technician and Specialist positions. May not be repeated. LR					
Online and Hybrid Sections					
0023		ONLINE		Jones, S	6/15-8/8
<i>This is an ONLINE section for 13.5 hours each week.</i>					
<i>Email instructor at sajones@losmedanos.edu for further information.</i>					

COMSC-122	Programming Concepts & Methodologies I - 3 Units				
<i>ADVISORY: Eligibility for ENGL-100</i>					
<i>LMC Degree: DA</i>					
<i>Transfer: UC, CSU; C-ID COMP 122</i>					
This course introduces the discipline of computer science with practical hands-on problem solving using a "high-level" computer programming language. The course will include basic syntax and semantics of a "high-level" language, variables, types, expressions, assignment, basic computation, simple I/O, conditional and iterative control structures, functions and parameter passing, structured decomposition, program design, programming style, algorithms and problem solving strategies, overview of programming languages, binding, visibility, scoping, and lifetime management. May not be repeated. SC					
Online and Hybrid Sections					
0100		ONLINE		Littlefield, W	6/15-8/7
<i>This is an ONLINE section for 6.75 hours each week.</i>					
<i>Email wlittlefield@losmedanos.edu if you have questions.</i>					

COOPERATIVE EDUCATION

COOP-160	General Work Experience Education - 1-4 Units				
<i>PREREQUISITE: Approved Application</i>					
<i>ADVISORY: Eligibility for ENGL-095</i>					
<i>LMC Degree: DA</i>					
<i>Transfer: CSU</i>					
This course is for students whose work is not related to their major. General Work Experience Education provides students with opportunities to develop marketable skills in preparation for employment or advancement within their current job. To participate in cooperative work experience education, students must be employed and undertake new or expanded responsibilities. Students, with faculty and employer approval, will develop and successfully complete one learning objective for each unit of credit in which they enroll. Additionally, students must work 75 paid hours or 60 non-paid hours for each unit of credit earned. Students may earn a maximum of sixteen units of general work experience during community college attendance which may be applied as electives toward graduation. SC					
0304				Perez-Nicholas, C	6/15-8/7
0307				Almassey, N	6/15-8/7
0308				Kean, M	6/15-8/7

SEC DAYS HOURS ROOM INSTRUCTOR DATES

COUNSELING

COUNS-030 Orientation to College - 1.5 Units

ADVISORY: Completion of the LMC Assessment Test or Multiple Measures Assessment (MMAP) for English and Math or equivalent

LMC Degree: DA

Transfer: CSU

Completion of the LMC Assessment Test or Multiple Measures Assessment (MMAP) for English and Math or equivalent This course is designed for first-time students to understand navigating the higher educational system, orientation to Los Medanos College and develop skills for success in the online classroom. We will cover academic policies, resources, academic programs and services; introduction LMC's majors, degrees and transfer opportunities. The class will focus on academic goal completion, California system of higher education; standards of scholarship, formation of a comprehensive educational plan. The course covers topics including: use of student services, online learning readiness, LMC certificates, associate degrees, and requirements for transfer. May not be repeated. SC

Online and Hybrid Sections

0072 ONLINE Ramirez-Godinez, S 6/15-7/2

This is an ONLINE section for 9 hours each week.

Email the instructor at sramirez@losmedanos.edu if you have questions.

COUNS-032 Introduction to Career Exploration - 1.5 Units

LMC Degree: DA

Transfer: CSU

This course is an intense career exploration designed to engage students in their own career development. Topics include how to realistically assess, review, and interpret various areas such as interests, attitudes, values, priorities, skills and strengths, goals, and career options in the current job market. This course also covers financial literacy. May not be repeated. P/NP

Online and Hybrid Sections

0053 ONLINE Wright, S Semester

This is an ONLINE section for 4.5 hours each week

Email instructor at swright@losmedanos.edu if you have questions.

COUNS-033 Transfer Planning - 1.5 Units

LMC Degree: DA

Transfer: CSU

This course enables students to become active participants in planning their continuing education by providing students with information necessary to evaluate universities, plan required coursework, explore housing, financial aid, and to familiarize themselves with programs and services offered at universities. May not be repeated. SC

Online and Hybrid Sections

0070 ONLINE Westbrook, N Semester

This is an ONLINE section for 4.5 hours each week.

Email instructor at nwestbrook@losmedanos.edu if you have questions.

COUNS-034 College Success - 1.5 Units

LMC Degree: DA

Transfer: CSU

This course is designed to help students develop the critical thinking skills and personal confidence necessary to succeed in college. Topics will include problem solving techniques, learning styles, time-management, goal-setting, study skills and test-taking strategies, stress management and LMC support services. May not be repeated. P/NP

Online and Hybrid Sections

0052 ONLINE Wright, S Semester

This is an ONLINE section for 4.5 hours each week.

Email instructor at swright@losmedanos.edu if you have questions.

0068 ONLINE Westbrook, N Semester

This is an ONLINE section for 4.5 hours each week

Email instructor at nwestbrook@losmedanos.edu if you have questions.

SEC DAYS HOURS ROOM INSTRUCTOR DATES

COUNS-036 Career & Life Planning - 3 Units

ADVISORY: Eligibility for ENGL-100 or equivalent

LMC Degree: DA

Transfer: UC; CSU Gen. Ed. Area E

Eligibility for ENGL-100 or equivalent In this course students will engage in in-depth career and life planning. Students will learn research strategies to make effective career and major choices, using a variety of techniques to find, retrieve, and evaluate career planning information. Students will use career assessments to identify their preferred work values, interests, skills, and personality traits. Research will then focus on the exploration of labor market needs; educational and employment requirements; and career ladders within given professions resulting in an effective educational and job search plan. This course will help students develop psychological "soft skills" in the domain of human relations such as interpersonal communication, self-esteem and professional confidence, emotional intelligence, conflict resolution, and effective collaboration in team-building skills. May not be repeated. SC

Online and Hybrid Sections

0054 ONLINE Rose, R Semester

This is an ONLINE section for 9 hours each week. Email the instructor at rose@losmedanos.edu if you have questions.

0080 ONLINE Rose, R 7/13-8/6

This is an ONLINE section for 9 hours each week. Email the instructor at rose@losmedanos.edu if you have questions.

DRAMATIC ARTS

DRAMA-015 Multicultural Perspectives within Theatre - 3 Units

ADVISORY: Eligibility for ENGL-100

LMC Degree: ADR: Ethnic/Multicultural Studies; Arts and Humanities; DA

Transfer: UC; CSU Gen. Ed. Area C1; IGETC Area 3A

Drama 15 is an interdisciplinary course focusing on the relationships of expression, imagination and experience in dramatic art forms as they pertain to African American, Latino American, Asian American and Euro-American theatre. The course also explores dramatic art as a cultural force in conjunction with music, dance and movement, storytelling, spoken word, film and the visual arts in relationship to the plays which are studied throughout the course. Also included is critical analysis of both individual and collaborative contributions of actors, directors, playwrights and designers as they relate to live theatrical productions. May not be repeated. SC

Online and Hybrid Sections

0244 ONLINE Ivory, T Semester

This is an ONLINE section for 9 hours each week.

Email tivory@losmedanos.edu if you have questions.

0245 ONLINE Ivory, T Semester

This is an ONLINE section for 9 hours each week.

Email tivory@losmedanos.edu if you have questions.

0246 ONLINE Crosthwaite, J Semester

This is an ONLINE section for 9 hours each week.

Email instructor jcrosthwaite@losmedanos.edu if you have questions.

0251 ONLINE Perry, J Semester

This section is completely online for 9 hours each week.

Please email questions to jperry-Folino@losmedanos.edu.

ENGLISH

SEC	DAYS	HOURS	ROOM	INSTRUCTOR	DATES
DRAMA-016	Theatre Appreciation - 3 Units				
<i>LMC Degree: ADR: Arts and Humanities; DA</i>					
<i>Transfer: UC; CSU Gen. Ed. Area C1; IGETC Area 3A; C-ID THTR 111</i>					
An introduction to theatre appreciation in which students will explore the various aspects of the theatrical experience: the components of theatre, the various creative artists and technicians who make it happen, explore design and technical production elements including the "nuts and bolts" aspects of scenery, costumes, lighting and sound, the traditional and historical background from which theatre springs and the genre of movement of which a particular play is part. May not be repeated. SC					
Online and Hybrid Sections					
0248	ONLINE			O'Neil, S	Semester
<i>This is an ONLINE section for 9 hours each week.</i>					
<i>Email instructor soneil@losmedanos.edu if you have questions.</i>					

DRAMA-030	Chicano/a Mexican American Cinema: A Critical Analysis - 3 Units				
<i>ADVISORY: ENGL-100</i>					
<i>LMC Degree: ADR: Ethnic/Multicultural Studies; DA</i>					
<i>Transfer: UC; CSU Gen. Ed. Area C2; IGETC Area 3B.</i>					
DRAMA-030 is a critical approach to the study of Chicano/a cinema. It utilizes film screenings, lectures, classroom discussions, and readings to facilitate the study of film as both an artistic form as well as an expression of Chicano/a historical, political and social movements in the United States and to explore the ethical values examined and expressed in Chicano/a movies. May not be repeated. SC					
Online and Hybrid Sections					
0008	ONLINE			Perry, J	Semester
<i>This is an ONLINE section for 9 hours each week.</i>					
<i>Email instructor jperry-Folino@losmedanos.edu if you have questions.</i>					
0032	ONLINE			Garcia, N	Semester
<i>This is an ONLINE section for 9 hours each week.</i>					
<i>Email ngarcia@losmedanos.edu if you have questions.</i>					
0247	ONLINE			Garcia, N	Semester
<i>This is an ONLINE section for 9 hours each week.</i>					
<i>Email ngarcia@losmedanos.edu if you have questions.</i>					
0249	ONLINE			Garcia, N	Semester
<i>This section is designed for PUENTE students only. This is an ONLINE section for 9 hours each week. Email ngarcia@losmedanos.edu if you have questions.</i>					

DRAMA-060	Directing for the Stage - 3 Units				
<i>LMC Degree: DA</i>					
<i>Transfer: UC, CSU</i>					
Directing for the Stage is a comprehensive course highlighting the primary aspects of Stage Direction. Students will learn script analysis, blocking, design principles for communication with production team, leadership, and dramatic structure. In addition, students will direct scenes each week that will require a concept, target audience and will reinforce lessons in leadership, blocking, and team management within the artistic process. By the end of the class each student will have a small portfolio of their body of work. May not be repeated. SC					
Online and Hybrid Sections					
0034	ONLINE			Garcia, N	Semester
<i>This is an ONLINE section for 15 hours each week.</i>					
<i>Email ngarcia@losmedanos.edu if you have questions.</i>					

SEC	DAYS	HOURS	ROOM	INSTRUCTOR	DATES
DRAMA-070	Film as an International Art Form - 3 Units				
<i>ADVISORY: Eligibility for ENGL-100</i>					
<i>LMC Degree: ADR: Arts and Humanities; DA</i>					
<i>Transfer: UC; CSU Gen. Ed. Area C1; IGETC Area 3A</i>					
DRAMA-070 is a critical approach to the study of film that integrates both the technical elements of filmmaking with aesthetic and thematic elements through the exploration of various genres which may include but are not limited to suspense and mystery, science fiction/fantasy, survival and adventure, romance and comedies and/or Westerns. The class encompasses films from the early 20th century through the present time and may include films from the Americas, Europe, Australia and/or Asia as it explores the cultural and artistic concerns of a variety of cultures as reflected in motion pictures. Related disciplines such as editing, music scoring, screenwriting, acting for the camera are also discussed in relationship to the films being studied. May not be repeated. LR					
Online and Hybrid Sections					
0004	ONLINE			Garcia, N	Semester
<i>This is an ONLINE section for 15 hours each week.</i>					
<i>Email instructor ngarcia@losmedanos.edu if you have questions.</i>					

ENGLISH

ENGL-083	Clarity and Style in Academic Writing - 3 Units				
<i>LMC Degree: DA</i>					
Writing is hard, even for those who do it all the time. This course cannot make writing easy -- only consistent practice can do that -- but it can make it easier. To accomplish this, we will review the structure and mechanics of writing clarity and style. We will, in short, learn the art of writing. We'll practice this art over several writing projects, in which we will utilize the tools learned to compose clear and concise texts. SC					
Online and Hybrid Sections					
0077	ONLINE			Warfe, S	Semester
<i>This section is completely ONLINE.</i>					
<i>Email instructor swarfe@losmedanos.edu if you have questions.</i>					

ENGL-100	College Composition - 3 Units				
<i>PREREQUISITE: ENGL-090; ENGL-095; ENGL-100S; ESL-044; ESL-095WRV or assessment process</i>					
<i>CO-REQUISITE: ENGL-100S</i>					
<i>LMC Degree: ADR: Language and Rationality: English Composition; DA</i>					
<i>Transfer: UC; CSU Gen. Ed. Area A2; IGETC Area 1A; C-ID ENGL 100</i>					
This course provides students with the knowledge and skills necessary to understand how clarity and style impact their written work. Instruction emphasizes mechanics, style, and composition, using grammatical principles and sentence-combining techniques. Students learn to write with clarity and style through the various writing projects they complete for the class. They will also learn the recursive nature of writing by developing writing processes unique to their composition style. This course is appropriate for students wanting an introduction to college-level sentence and writing skills or for students enrolled in other English courses who want or need extra writing support. May not be repeated. SC					
Online and Hybrid Sections					
0071	ONLINE			Olgin, G	Semester
<i>This is an ONLINE section for 9 hours each week.</i>					
<i>Email golgin@losmedanos.edu if you have questions.</i>					
0073	ONLINE			Toruno-Conley, S	Semester
<i>This section is completely ONLINE.</i>					
<i>Email instructor storunoConley@losmedanos.edu if you have questions.</i>					
0074	ONLINE			Zhu, Y	Semester
<i>This section is completely ONLINE.</i>					
<i>Email instructor yzhu@losmedanos.edu if you have questions.</i>					
0076	ONLINE			Keyser, G	Semester
<i>This is an ONLINE section for 9 hours each week.</i>					
<i>Email gkeyser@losmedanos.edu if you have questions.</i>					

► Continued next page

SEC	DAYS	HOURS	ROOM	INSTRUCTOR	DATES
9530			ONLINE	Hayes, N	Semester
<i>This is an ONLINE section for 9 hours each week. Email nhayes@losmedanos.edu if you have questions.</i>					

**ENGL-100/100S Linked Courses:
College Composition - 3 Units
Support for College Composition - 1 Unit**

PREREQUISITE: ENGL-090; ENGL-095 or assessment process

CO-REQUISITE: ENGL-100

LMC Degree: NDA

Want extra help with English 100? This course will help you to improve your reading, writing, and study skills in the pursuit of completing English 100. An intensive support course, English 100S is a space for you to work alongside your instructor and classmates in producing college-level essays that engage diverse non-fiction texts.

You will become familiar with the steps of the writing process (drafting, revising, editing, and proofreading) with particular focus on revision using instructor feedback while also developing your reading skills and academic success strategies. P/NP

0097			ONLINE	Lyons, D	6/15-8/6
------	--	--	--------	----------	----------

This is an ONLINE section for 6.75 hours each week.

0101			ONLINE	Lyons, D	6/15-8/6
------	--	--	--------	----------	----------

This is an ONLINE section for 4.5 hours each week.

Email dlyons@losmedanos.edu if you have questions.

ENGL-220 Critical Thinking - 3 Units

PREREQUISITE: ENGL-100 or equivalent

LMC Degree: DA

Transfer: UC; CSU Gen. Ed. Area A3

Students critically examine popular culture artifacts using concepts of rhetoric such as rhetorical situation and rhetorical appeals. They analyze diverse, contemporary, and culturally relevant written and multi-media texts, looking for various elements of thinking, discourse, and argument, including inductive and deductive reasoning. Students evaluate and criticize diverse and culturally relevant written and multi-media texts. They identify and explain logical fallacies (formal and informal), instances of bias or deception, and various strengths and weaknesses of arguments and information sources. Finally, they demonstrate college-level writing skills in the analysis, evaluation, and advocacy of ideas. May not be repeated. LR

Online and Hybrid Sections

0237			ONLINE	Yeong, M	Semester
------	--	--	--------	----------	----------

This is an ONLINE section for 9 hours each week.

Email myeong@losmedanos.edu if you have questions.

ENGL-221 Advanced Composition and Critical Thinking - 3 Units

PREREQUISITE: ENGL-100

LMC Degree: DA

Transfer: UC; CSU Gen. Ed. Area A3; IGETC Area 1B; C-ID ENGL 105

This course is designed to provide advanced composition and critical thinking instruction beyond the English 100 level, with a focus on non-fiction reading, argument analysis, and academic writing. Students analyze and evaluate arguments from diverse perspectives on controversial, contemporary, relevant issues. Students learn to write well-reasoned, fully-developed argument essays and prepare for the level of work expected at 4-year institutions. May not be repeated. LR

Online and Hybrid Sections

0238			ONLINE	Hiltbrand, J	Semester
------	--	--	--------	--------------	----------

This section is completely ONLINE.

Email jhiltbrand@losmedanos.edu if you have questions.

0239			ONLINE	Brown, G	Semester
------	--	--	--------	----------	----------

This is an ONLINE section for 9 hours each week.

Email gbrown@losmedanos.edu if you have questions.

0240			ONLINE	Noel, J	Semester
------	--	--	--------	---------	----------

This section is completely ONLINE.

Email jnoel@losmedanos.edu if you have questions.

ENGLISH AS A SECOND LANGUAGE (ESL) - NON CREDIT

SEC	DAYS	HOURS	ROOM	INSTRUCTOR	DATES
9534			ONLINE	Ashmore, J	Semester
<i>This is an ONLINE section for 9 hours each week. Email jashmore@losmedanos.edu if you have questions.</i>					
0236			ONLINE	Buettner, J	Semester
<i>This section is completely ONLINE.</i>					

ENGL-230 Thinking and Writing Critically about Literature - 3 Units

PREREQUISITE: ENGL-100

LMC Degree: ADR: Arts and Humanities; DA

This course continues the development of students' college-level skills in reading, critical thinking, writing, and research, focusing on critically analyzing and writing about poetry, drama, fiction, and literary non-fiction texts. Essays written for the course (6,000 words minimum) draw from the readings and secondary sources to present carefully reasoned arguments. May not be repeated. SC

Online and Hybrid Sections

0048			ONLINE	Nogarr, A	Semester
------	--	--	--------	-----------	----------

This section is completely ONLINE.

Email anogarr@losmedanos.edu if you have questions.

0049			ONLINE	Hiltbrand, J	Semester
------	--	--	--------	--------------	----------

This section is completely ONLINE.

Email jhiltbrand@losmedanos.edu if you have questions.

9502			ONLINE	Scoggins, A	Semester
------	--	--	--------	-------------	----------

This is an ONLINE section for 9 hours each week.

Email ascoggins@losmedanos.edu if you have questions.

ENGLISH AS A SECOND LANGUAGE (ESL)- NON-CREDIT

ESLN-065PC Essential Pronunciation and Conversation Skills 1 - 0 Unit

ADVISORY: One year of English language instruction; level-appropriate placement by the ESL assessment process

LMC Degree: NC

This is the first in the two-course "Entering" stage of the LMC Noncredit ESL oral communication instructional sequence. This foundational English for General Purposes (EGP) course is designed to help non-native English speaking students develop aural acuity and oral intelligibility and confidence. Students will begin to learn about and practice general conversation skills and North American English pronunciation features such as voicing, aspiration, mouth and tongue position, intonation, stress, emphasis, rhythm, linking, vowels, consonants, syllables, thought groups, phonetics and spelling rules. Instructional emphasis is placed on focused awareness raising and practice of discrete sounds, connected speech patterns, and applied conversational use. This level one entering-stage pronunciation and conversation course is four levels below transfer and supports students progressing to the level two entering-stage pronunciation and conversation course, ESLN-075PC. It is recommended that students concurrently enroll in the other level one entering-stage Noncredit ESL courses – ESLN-065G, ESLN-065VR, and ESLN-065W – as offered in the schedule of classes. P/NP/SP

Online and Hybrid Sections

8803			ONLINE	Moreno, E	Semester
------	--	--	--------	-----------	----------

This is an ONLINE section for 9 hours each week.

Email emoreno@losmedanos.edu if you have questions.

► Continued next column

FIRE TECHNOLOGY

SEC	DAYS	HOURS	ROOM	INSTRUCTOR	DATES
-----	------	-------	------	------------	-------

ESLN-065VR **Basic Vocabulary and Reading Development 1 - 0 Unit**

ADVISORY: One year of English language instruction; level-appropriate placement by the ESL assessment process

LMC Degree: NC

This is the first in the two-course "Entering" stage in the LMC Noncredit ESL vocabulary and reading instructional sequence. This foundational English for General Purposes (EGP) course focuses on helping non-native English speaking language students develop beginning to high-beginning basic and critical reading skills and strategies, as well as a useful and relevant English vocabulary base. Students will work with various authentic and adapted social and multicultural texts that range in length from a) short, multi-sentence paragraphs, to b) single-page pieces, and up to c) one-page, multi-paragraph articles. Students will also engage in extensive reading and read level-appropriate English language books and articles. Students will develop a vocabulary base and will learn vocabulary learning strategies, dictionary use, context clues, idioms, and word parts appropriate to developing a beginning to high-beginning level of English language proficiency. This level one entering-stage vocabulary and reading course is four levels below transfer and supports students progressing to the level two entering-stage vocabulary and reading course, ESLN-075VR. It is recommended that students concurrently enroll in the other level one entering-stage Noncredit ESL courses – ESLN-065G, ESLN-065W, and ESLN-065PC – as offered in the schedule of classes. P/NP/SP

Online and Hybrid Sections

8805	ONLINE	Lopez, A	Semester
------	--------	----------	----------

*This is and ONLINE section for 9 hours each week.
Email alopez@losmedanos.edu if you have questions.*

ESLN-065W **Fundamental Writing Skills 1 - 0 Unit**

ADVISORY: One year of English language instruction; level-appropriate placement by the ESL assessment process

LMC Degree: NC

One year of English language instruction; level-appropriate placement by the ESL assessment process This is the first in the two-course "Entering" stage in the LMC Noncredit ESL writing skills instructional sequence. This foundational English for General Purposes (EGP) course focuses on helping non-native English-speaking language learners develop beginning to high-beginning writing skills that are essential for clear, understandable written communication. Students will learn, practice and apply basic sentence structures, punctuation and spelling rules, editing strategies, and the roles and placements of nouns, verbs, adjectives, pronouns prepositions, and conjunctions. Students will also learn level-appropriate vocabulary and practice using new words in their writing for everyday purposes. This first-level entering-stage writing skills course is four levels below transfer and supports students progressing to the second-level entering-stage writings skills course, ESLN-075W. It is recommended that students concurrently enroll in the other level one entering-level Noncredit ESL courses – ESLN-065G, ESLN-065VR, and ESLN-065CP – as offered in the schedule of classes. P/NP/SP

Online and Hybrid Sections

8801	ONLINE	Tapiarene, M	6/15-7/9
------	--------	--------------	----------

*This is and ONLINE section for 13.5 hours each week.
Email mtapiarene@losmedanos.edu if you have questions.*

SEC	DAYS	HOURS	ROOM	INSTRUCTOR	DATES
-----	------	-------	------	------------	-------

ESLN-075W **Fundamental Writing Skills 2 - 0 Unit**

ADVISORY: ESLN-065W or level-appropriate placement by the ESL assessment process

LMC Degree: NC

This is the second in the two-course "Entering" stage in the LMC Noncredit ESL writing skills instructional sequence. This foundational English for General Purposes (EGP) course focuses on helping non-native English-speaking language learners develop high-beginning to low-intermediate writing skills that are essential for comprehensible and meaningful written communication. Students continue to apply their developing understanding of sentence basics – including standard grammar, capitalization, punctuation and editing strategies – as they are guided on toward understanding paragraph basics and producing grammatically and syntactically proper simple present, past, future, and descriptive paragraphs. Students will also expand and enhance their writing through level-appropriate vocabulary building and application efforts. This level two entering-stage English for General Purposes (EGP) writing skills course is three levels below transfer. The completion of it and its level one counterpart ESLN-065W, along with the other Noncredit ESL courses, serve as a bridge into the English for Academic Purposes (EAP) Credit ESL courses. It is recommended that students concurrently enroll in the other level two entering-level Noncredit ESL courses – ESLN-075G, ESLN-075VR, and ESLN-075CP – as offered in the schedule of classes. P/NP/SP

Online and Hybrid Sections

8802	ONLINE	Scoggins, A	7/13-8/6
------	--------	-------------	----------

*This is and ONLINE section for 13.5 hours each week.
Email ascoggins@losmedanos.edu if you have questions.*

FIRE TECHNOLOGY

FIRE-101 **Fire Protection Organization - 3 Units**

ADVISORY: Eligibility for ENGL-095

LMC Degree: DA

Transfer: CSU

Survey of career opportunities in California Fire and Emergency Management Services and related fields. This is the basic core class within the fire technology program. May not be repeated. SC

Online and Hybrid Sections

0107	ONLINE	Staff, L	Semester
------	--------	----------	----------

This is an ONLINE section for 9 hours each week.

FIRE-102 **Fire Behavior and Combustion - 3 Units**

ADVISORY: FIRE-101; eligibility for ENGL-095

LMC Degree: DA

Transfer: CSU

Fundamentals and scientific principles of fire behavior, combustible materials, extinguishing agents, hazardous and toxin materials, forms of energy and fire prevention/suppression techniques of all types of fires. May not be repeated. SC

Online and Hybrid Sections

0109	ONLINE	Kelleher, J	Semester
------	--------	-------------	----------

*This is an ONLINE section for 9 hours each week.
Email jkelleher@losmedanos.edu if you have questions.*

SEC DAYS HOURS ROOM INSTRUCTOR DATES

SEC DAYS HOURS ROOM INSTRUCTOR DATES

HISTORY

HUMANITIES

HIST-029 United States History until 1865 - 3 Units
ADVISORY: Eligibility for ENGL-100
LMC Degree: ADR: Social and Behavioral Sciences; DA
Transfer: UC; CSU Gen. Ed. Area C2, D; IGETC Area 4F

This course examines the social, cultural, political, and economic history of North America from the era of European colonization to the Civil War. Particular emphasis will be placed on understanding how race, class, gender, and sexuality intersected with ideas about power. The course will present a multicultural history of the United States by examining the experiences of Native Americans, African-Americans, Euro-Americans, Hispanic-Americans and their contributions to U.S. history. The origins, nature, and impact of the U.S. Constitution on U.S. history before 1865 including the political philosophy of the framers, the operation of political institutions, and the rights and obligations of citizens will also be covered. May not be repeated. SC

Online and Hybrid Sections

0082	ONLINE	Bearden, J	Semester
<i>This is an ONLINE section for 9 hours each week.</i>			
<i>Email jbearden@losmedanos.edu if you have questions.</i>			
9510	ONLINE	Tripp, R	Semester
<i>This is an ONLINE section for 9 hours each week.</i>			
<i>Email rtripp@losmedanos.edu if you have questions.</i>			

HIST-030 United States History from 1865 - 3 Units
ADVISORY: Eligibility for ENGL-100
LMC Degree: ADR: Social and Behavioral Sciences; DA
Transfer: UC; CSU Gen. Ed. Area C2, D; IGETC Area 4F; C-ID HIST 140

This course examines the social, cultural, political, and economic history of North America from the post-Civil War to the modern era. Particular emphasis will be placed on understanding how race, class, gender, and sexuality intersected with ideas about power. The course will present a multicultural history of the United States by examining the experiences of Native Americans, African-Americans, Euro-Americans, Hispanic-Americans and their contributions to U.S. history. The origins, nature, and impact of the U.S. Constitution on U.S. history since 1865 including the operation of political institutions, and the rights and obligations of citizens will also be covered. May not be repeated. SC

Online and Hybrid Sections

0091	ONLINE	Bearden, J	Semester
<i>This is an ONLINE section for 9 hours each week.</i>			
<i>Please email jbearden@losmedanos.edu if you have any questions.</i>			
0088	ONLINE	Lemay, R	7/13-8/6
<i>This is an ONLINE section for 13.5 hours each week.</i>			
<i>Email rlemay@losmedanos.edu if you have questions.</i>			

HIST-055 History of Sexuality in North America - 3 Units
ADVISORY: Eligibility for ENGL-100
LMC Degree: ADR: Social and Behavioral Sciences; Ethnic/Multicultural Studies; DA
Transfer: UC CSU Gen. Ed. Area C2, D; IGETC Area 4D

This course surveys the social construction of sexualities in North America from the colonial period through the present. The course will focus on understanding how the expression and regulation of sexuality both structured cross-cultural contact in North America and contributed to social order and control. Particular emphasis is placed on understanding how the regulation of sexuality both contested and reinforced other hierarchies of power such as race, class, and gender. May not be repeated. LR

Online and Hybrid Sections

0083	ONLINE	Bearden, J	Semester
<i>This is an ONLINE section for 9 hours each week.</i>			
<i>Email jbearden@losmedanos.edu if you have questions.</i>			

HUMAN-020 Medieval and Renaissance Humanities - 3 Units
ADVISORY: Eligibility for ENGL-100
LMC Degree: ADR: Arts and Humanities; DA
Transfer: UC; CSU Gen. Ed. Area C2; IGETC Area 3B

An integrated interdisciplinary approach to history, religion, philosophy, literature, art and music as aspects of Western culture and civilization, that focuses on the period from the late Roman Empire through the Renaissance and Reformation. In this broad context, students will investigate the intellectual, spiritual, cultural and political foundations of the Modern World. Meets Humanities requirements for general education and CSU Humanities Area 2. May not be repeated. LR

Online and Hybrid Sections

0031	ONLINE	Alexander, K	Semester
<i>This is an ONLINE section for 9 hours each week.</i>			
<i>Email kalexander@losmedanos.edu if you have questions.</i>			

HUMAN-050 Hip Hop Culture: An American Phenomenon - 3 Units
ADVISORY: Eligibility for ENGL-100
LMC Degree: ADR: Arts and Humanities; DA
Transfer: UC, CSU Gen. Ed. Area C2; IGETC Area 3B

This broad-based interdisciplinary course addresses aspects of Hip Hop culture, including its history, philosophy, art, literature, dance and music that has created a culture and identity for American (and international) youth in all its diversity. The sheer volume of multi-ethnic, multilingual, interracial and cross class integration that Hip Hop culture has generated in the last forty years is matched by very few cultural phenomena in the history of this nation. Elements of Hip Hop have touched nearly every sector of our national culture, as well as they have reached into other continents. In light of this, it is imperative to examine the origins and evolution of Hip Hop in the US as a means of understanding its influence on contemporary national dialogues about race, gender, sexuality, class, politics and religion. Accordingly, this course, will explore the relationship of Hip Hop to contemporary social and political discourses by charting its history in the United States from the post-World War II era into the early twenty-first century – approximately 1968 to present. May not be repeated. SC

Online and Hybrid Sections

0030	ONLINE	Zuniga, L	Semester
<i>This is an ONLINE section for 9 hours each week.</i>			
<i>Email lzuniga@losmedanos.edu if you have questions.</i>			

JOURNALISM

JOURN-100 Mass Communication - 3 Units
LMC Degree: ADR: Arts and Humanities; DA
Transfer: UC; CSU Gen. Ed. Area D; IGETC Area 4G; C-ID JOUR 100

This survey of mass communication examines the origins, development, role and impact of the mass media in society — books, newspapers, magazines, radio, television, film, recordings, video games, social media — as well as the internet’s connection to convergence and globalization. It analyzes media messages within the cultural landscape: entertainment, journalism, advertising, public relations and social media. It also explores current and future trends and issues in mass communication and media literacy, and laws and ethics involved with the mass media and related industries. May not be repeated. SC

Online and Hybrid Sections

0110	ONLINE	Staff, L	Semester
<i>This section is completely ONLINE for 9 hours each week.</i>			

KINESIOLOGY

SEC	DAYS	HOURS	ROOM	INSTRUCTOR	DATES
-----	------	-------	------	------------	-------

KINESIOLOGY

KINES-100 Introduction to Kinesiology - 3 Units

ADVISORY: Eligibility for ENGL-100

LMC Degree: DA

Transfer: UC, CSU Gen. Ed. Area E; C-ID KIN 100

(formerly PE-100) This is an introductory course that will survey the discipline of kinesiology/physical education including the analysis of the nature and importance of physical activity, the knowledge base of the discipline and careers in physical activity professions. Focus will also be placed on the integrative nature of the discipline. May not be repeated. SC

Online and Hybrid Sections

5079	ONLINE	Ralston, C	Semester
------	--------	------------	----------

This is an ONLINE section for 9 hours each week.

Please email instructor cralston@losmedanos.edu if you have questions.

5085	ONLINE	Ralston, C	Semester
------	--------	------------	----------

This is an ONLINE section for 9 hours each week.

Please email instructor cralston@losmedanos.edu if you have questions.

KINESIOLOGY-ACTIVITY

KNACT-008A Strength and Conditioning A - 1 Unit

LMC Degree: DA

Transfer: UC, CSU

(formerly PE-008A) This course includes instruction in all elements of weight training. It will involve techniques, safety procedures, knowledge of muscle groups, equipment use, warm-up, strength and endurance training, exercise progression and improved fitness. May not be repeated. SC

Online and Hybrid Sections

5061	ONLINE	Villegas, R	Semester
------	--------	-------------	----------

This is an ONLINE section for 9 hours each week.

Email rvillegas@losmedanos.edu if you have questions.

KNACT-008B Strength and Conditioning B - 1 Unit

LMC Degree: DA

Transfer: UC, CSU

(formerly PE-008B) This course includes intermediate instruction for students with a basic foundation in weight training principles. Topics include techniques, safety procedures, knowledge of muscle groups, equipment use, core and auxiliary lifts, lifting programs and exercise progression. May not be repeated. SC

Online and Hybrid Sections

5065	ONLINE	Villegas, R	Semester
------	--------	-------------	----------

This is an ONLINE section for 9 hours each week.

Email rvillegas@losmedanos.edu if you have questions.

KNACT-033 Cardio Kickboxing - 1 Unit

LMC Degree: DA

Transfer: UC, CSU

(formerly PE-033) Cardio kickboxing will combine punches, kicks, sports conditioning, and drills to provide a workout that will improve cardiovascular fitness, muscular strength and flexibility. This course designed for all fitness levels. May not be repeated. SC

Online and Hybrid Sections

5060	ONLINE	Stretch, S	Semester
------	--------	------------	----------

This is an ONLINE section for 9 hours each week.

SEC	DAYS	HOURS	ROOM	INSTRUCTOR	DATES
-----	------	-------	------	------------	-------

KNACT-057A Beginning Yoga for Health and Fitness - 1 Unit

LMC Degree: DA

Transfer: UC, CSU

(formerly PE-057A) This course introduces the student to beginning yoga poses to enhance strength, flexibility, muscle control, mental concentration, and alertness. Beginning breathing and relaxation techniques will help the student reduce stress and tension. May not be repeated. SC

Online and Hybrid Sections

5090	ONLINE	Bradley, M	Semester
------	--------	------------	----------

This is an ONLINE section for 9 hours each week.

Email mbradley@losmedanos.edu if you have questions.

KNACT-057B Intermediate Yoga for Health and Fitness - 1 Unit

ADVISORY: KNACT-057A

LMC Degree: DA

Transfer: UC, CSU

(formerly PE-057B) This course introduces the student to intermediate yoga poses to enhance strength, flexibility, muscle control, mental concentration, and alertness. Intermediate breathing and relaxation techniques will help the student reduce stress and tension. May not be repeated. SC

Online and Hybrid Sections

5091	ONLINE	Bradley, M	Semester
------	--------	------------	----------

This is an ONLINE section for 9 hours each week.

Email mbradley@losmedanos.edu if you have questions.

KINESIOLOGY-DANCE

KNDAN-053 Introduction to Dance - 1 Unit

LMC Degree: DA

Transfer: UC, CSU

(formerly PE-053) Designed for the student with little experience in ballet or jazz dance, this course teaches students basic dance technique and choreography to enhance strength, flexibility and form. May not be repeated. SC

Online and Hybrid Sections

5104	ONLINE	Bradley, M	Semester
------	--------	------------	----------

This is an ONLINE section for 9 hours each week.

Email mbradley@losmedanos.edu if you have questions.

KINESIOLOGY-INTERCOLLEGIATE ATHLETICS

KNICA-006 Fitness for Athletic Competition - 1 Unit

ADVISORY: High school athletic experience

LMC Degree: DA

Transfer: UC, CSU

(formerly ATH-006) This course is designed to introduce the athlete to the elements, understanding and knowledge of athletic physical training for competition. Course activities will include endurance running, interval sprinting, weight training and plyometric training to improve one's level of fitness for the upcoming athletic season. May be repeated three times. SC

Online and Hybrid Sections

0066	ONLINE	D'Albora, A	Semester
------	--------	-------------	----------

This is an ONLINE section for 9 hours each week.

Email adalbora@losmedanos.edu if you have questions.

0027	ONLINE	Rognlien, T	Semester
------	--------	-------------	----------

This is an ONLINE section for 9 hours each week.

Email trognlien@losmedanos.edu if you have questions.

MATHEMATICS

MATH-025 Elementary Algebra - 5 Units

ADVISORY: Pre-Algebra or proficiency solving proportions, calculating with decimals, fractions and negative numbers

LMC Degree: DA

A five-unit introductory algebra course that focuses on the study of linear equations, systems of linear equations, and quadratic equations. Linear equations and systems of linear equations are constructed from information given in tabular, graphical and symbolic forms in real-world settings and these models are used to make decisions or predictions. Quadratic equations are solved using symbolic methods, such as factoring or the quadratic formula, as well as tables and graphs. The following topics are also covered: arithmetic and order of operations with real numbers; laws of exponents with integer exponents; one variable inequalities, proportional reasoning, the Pythagorean Theorem, unit analysis, perimeter, area and volume. Successful students will develop proficient skills in communication of mathematics, problem-solving, use of multiple representations, and effective learning skills. Math 25 is part of the LMC Developmental Math Program. May not be repeated. SC

Online and Hybrid Sections

0145	ONLINE	Batra, P	Semester
	<i>This is an ONLINE section for 21 hours each week.</i>		
	<i>Email pbatra@losmedanos.edu if you have questions.</i>		

MATH-026 Plane Geometry - 3 Units

PREREQUISITE: One year high school algebra, or MATH-025 with a grade of "C" or better, or MATH-029 with a grade of "C" or better, or completion of coursework at another college that is comparable to Math 25 with a grade of "C" or better, or demonstration of equivalent algebra skills based on our LMC assessment process, or equivalent assessment recommendation from another college.

LMC Degree: ADR: Language and Rationality: Communication and Analytical Thinking; DA

Plane geometry is a one semester study of lines, angles, triangles, quadrilaterals, other polygons, circles and some polygon solids and spheres; topics include perimeter, area, surface area, volume, Pythagorean Theorem, congruence and similar figures, proof and logical explanation and some geometric constructions, using a compass, straightedge, protractor, and ruler. Students may work in large or small groups with professor assistance and directed discussion using a creative problem-solving and discovery-type approach to learning geometric concepts, theory and application to solving practical problems. This course is ideal as a review as well as a first course in geometry, and preparation for study of more advanced math such as pre-calculus and trigonometry. This course satisfies the math requirement for an associate degree. May not be repeated. SC

Online and Hybrid Sections

0160	ONLINE	Crosby, B	Semester
	<i>This is an ONLINE section for 15 hours each week.</i>		
	<i>Email bcrosby@losmedanos.edu if you have questions.</i>		
9516	ONLINE	Morales, J	Semester
	<i>This is an ONLINE section for 15 hours each week.</i>		
	<i>Access to a webcam is required for this section.</i>		
	<i>Please contact the instructor by email at jamorales@losmedanos.edu for questions prior to the start of the semester.</i>		

MATH-030 Intermediate Algebra - 4 Units

ADVISORY: Recommended completion of Elementary Algebra (C or better) or LMC MATH-020 within the last 5 years.

LMC Degree: ADR: Language and Rationality: Communication and Analytical Thinking; DA

Math 30 is an intermediate algebra course with focus on linear, quadratic, exponential, and logarithmic functions. Each family of functions will be investigated from multiple perspectives that include tabular, graphical, symbolic, and verbal forms. Students will develop proficient skills in communication of mathematics, problem-solving, use of multiple representations, and effective learning skills. Math 30 is part of the LMC Developmental Math Program. A graphing calculator or graphing software is required. May not be repeated. SC

Online and Hybrid Sections

4017	ONLINE	Briones, R	Semester
	<i>This is an ONLINE section for 15 hours each week.</i>		
	<i>Email rbriones@losmedanos.edu if you have questions.</i>		
6044	ONLINE	Aderinto, A	Semester
	<i>This is an ONLINE section for 15 hours each week.</i>		
	<i>Email aaderinto@losmedanos.edu if you have questions.</i>		
9518	ONLINE	Stricker, M	Semester
	<i>This is an ONLINE section for 18 hours each week. Students are expected to complete the required assignments independently and submit them online.</i>		
	<i>Access to a webcam is required for this section. Please contact the instructor by email at mstricker@losmedanos.edu for questions prior to the start of the semester.</i>		

MATH-110 Introduction to Statistics - 4 Units

PREREQUISITE: MATH-027, MATH-110S (028), MATH-029, MATH-030 or equivalent

LMC Degree: ADR: Language and Rationality: Communication and Analytical Thinking; DA

Transfer: UC; CSU Gen. Ed. Area B4; IGETC Area 2A (formerly MATH-034) A first course in statistics with an introduction to descriptive statistics (measures of central tendency, variability, standard graphical representations of data distributions, correlation and linear regression), sampling design for reliable data production via experiments and surveys, sampling distributions, tests of significance and confidence intervals, probability as it relates to inference, applications using data from a broad range of disciplines. Use of a statistical software package or graphing calculator required. May not be repeated. SC

Online and Hybrid Sections

0007	ONLINE	Matthews, S	Semester
	<i>This is an ONLINE section for 18 hours each week.</i>		
	<i>Email smatthews@losmedanos.edu if you have questions.</i>		
0011	ONLINE	Von Bergen, J	Semester
	<i>This is an ONLINE section for 18 hours each week.</i>		
	<i>Email jvonbergen@losmedanos.edu if you have questions.</i>		
0012	ONLINE	Guerrero-Gonzalez, J	Semester
	<i>This is an ONLINE section for 18 hours each week.</i>		
	<i>Email jguerrero@losmedanos.edu if you have questions.</i>		
0013	ONLINE	Von Bergen, J	Semester
	<i>This is an ONLINE section for 18 hours each week.</i>		
	<i>Email jvonbergen@losmedanos.edu if you have questions.</i>		
0014	ONLINE	Von Bergen, J	Semester
	<i>This is an ONLINE section for 18 hours each week.</i>		
	<i>Email jvonbergen@losmedanos.edu if you have questions.</i>		
9519	ONLINE	DeStefano, J	Semester
	<i>This is an ONLINE section for 18 hours each week.</i>		
	<i>Access to a webcam is required for this section.</i>		
	<i>Please contact the instructor by email at jdestefano@losmedanos.edu for questions prior to the start of the semester.</i>		

MUSIC

SEC	DAYS	HOURS	ROOM	INSTRUCTOR	DATES
9528			ONLINE	Wolf, V	Semester

This is an ONLINE section for 18 hours each week. Students are expected to complete the required assignments independently and submit them online. Access to a webcam is required for this section. Please contact the instructor by email at vwolf@losmedanos.edu for questions prior to the start of the semester.

MATH-155 Precalculus - 4 Units
PREREQUISITE: MATH-026 and MATH-030 or MATH-029 or equivalent
CO-REQUISITE: MATH-026 or MATH-155S
LMC Degree: ADR: Language and Rationality: Communication and Analytical Thinking; DA
Transfer: UC; CSU Gen. Ed. Area B4; IGETC Area 2A
 (formerly MATH-040) MATH-155 is an in depth look at functions and their usefulness in mathematical modeling. Functions are approached numerically, graphically, symbolically, and verbally. Families of functions studied include: linear, quadratic, exponential, logarithmic, trigonometric, power, polynomial, and rational. Additional function topics: rate of change, concavity, domain/range, function transformation/combination, inverse functions, and asymptotic behavior of functions. Algebraic skills are further developed. This course is primarily intended to prepare students for calculus but may also serve as an advanced course for students not intending to continue with calculus. Use of a mathematical software package or graphing calculator is required. May not be repeated. SC

Online and Hybrid Sections

0098			ONLINE	Cohen, J	Semester
					<i>This is an ONLINE section for 18 hours each week. Email jcohen@losmedanos.edu if you have questions.</i>
0099			ONLINE	Zheng, B	Semester
					<i>This is an ONLINE section for 18 hours each week. Email bzheng@losmedanos.edu if you have questions.</i>
9521			ONLINE	Hubbard, S	Semester
					<i>This is an ONLINE section for 18 hours each week. Access to a webcam is required for this section. Please contact the instructor by email at shubbard@losmedanos.edu for questions prior to the start of the semester.</i>
9524			ONLINE	DeStefano, J	Semester
					<i>This is an ONLINE section for 18 hours each week. Access to a webcam is required for this section. Please contact the instructor by email at jpddestefano@losmedanos.edu for questions prior to the start of the semester.</i>

MATH-210 Calculus and Analytic Geometry I - 4 Units
PREREQUISITE: MATH-026 and 155 (formerly MATH-040) or equivalent or MATH-155 or the equivalent and MATH-155S
LMC Degree: ADR: Language and Rationality: Communication and Analytical Thinking; DA
Transfer: UC; CSU Gen. Ed. Area B4; IGETC Area 2; C-ID MATH 210
 (formerly MATH-050) Math-210 is an introduction to differential and integral calculus and coordinate geometry. Topics include: functions, limits, and continuity; techniques and applications of differentiation; an introduction to integration; the Fundamental Theorem of Calculus. This course is intended for students in mathematics, science and engineering majors. Use of a mathematical software package or graphing calculator is required. May not be repeated. SC

Online and Hybrid Sections

0022			ONLINE	Gonzalinajec, N	Semester
					<i>This is an ONLINE section for 18 hours each week. Email ngonzalinajec@losmedanos.edu if you have questions.</i>
0021			ONLINE	Magante, M	Semester
					<i>This is an ONLINE section for 18 hours each week. Email jmagante@losmedanos.edu if you have questions.</i>

SEC	DAYS	HOURS	ROOM	INSTRUCTOR	DATES
9520			ONLINE	Wolf, V	Semester

This is an ONLINE section for 18 hours each week. Access to a webcam is required for this section. Please contact the instructor by email at vwolf@losmedanos.edu for questions prior to the start of the semester.

MATH-220 Calculus and Analytic Geometry II - 4 Units
PREREQUISITE: MATH-210 (formerly MATH-050) or equivalent
LMC Degree: ADR: Language and Rationality: Communication and Analytical Thinking; DA
Transfer: UC; CSU Gen. Ed. Area B4; IGETC Area 3; C-ID MATH 220
 (formerly MATH-060) This course is the second of the three semester calculus sequence. The course extends the ideas of the previous course to further development of the derivative and the anti-derivative of a function; techniques of integration; polar and parametric equations; realistic applications to various fields; basic differential equations and their solutions; infinite sequences and series; and series approximation of functions. This course is intended for students in mathematics, science and engineering majors. Use of a mathematical software package or graphing calculator required. May not be repeated. SC

Online and Hybrid Sections

0024			ONLINE	Magante, M	Semester
					<i>This is an ONLINE section for 18 hours each week. Email mmagante@losmedanos.edu if you have questions.</i>

MUSIC

MUSIC-010 Music Literature - 3 Units
ADVISORY: Eligibility for ENGL-095
LMC Degree: ADR: Arts and Humanities; DA
Transfer: UC; CSU Gen. Ed. Area C1; IGETC Area 3A
 This is an interdisciplinary course providing an overview of the creative process with a focus on music. The course develops an aural analysis of music from many cultures and from past to present-day forms of musical creativity; it examines music as a reflection of the beliefs, social conditions and temper of the times. Sophistication in listening will be developed with attention to musical design, forms, style, instrumentation, and the derivation of increased pleasure from this art form. The course will allow the opportunity for creative problem-solving through critical skills thought attendance at and evaluation of contemporary exhibits and performances. May not be repeated. SC

Online and Hybrid Sections

0006			ONLINE	Chuah, C	Semester
					<i>This is an ONLINE section for 9 hours of instruction each week. Please email instructor kchuah@losmedanos.edu if you have questions.</i>

MUSIC-012 Popular Music in American Culture - 3 Units
ADVISORY: Eligibility for ENGL-100
LMC Degree: ADR: Arts and Humanities; DA
Transfer: UC; CSU Gen. Ed. Area C1; IGETC Area 3B. Also satisfies American Cultures Requirement at UCB
 A multicultural study of the evolution of America musical styles, including blues, salsa, samba, rock, jazz, pop, rhythm and blues and country and folks, with emphasis on the African American, Euro American, Latin American origins of these contemporary styles and their historical contexts. May not be repeated. LR

Online and Hybrid Sections

0010			ONLINE	Zilber, M	Semester
					<i>This is an ONLINE section for 9 hours each week. Please email instructor mzilber@losmedanos.edu if you have questions.</i>

► Continued next column

SEC	DAYS	HOURS	ROOM	INSTRUCTOR	DATES
-----	------	-------	------	------------	-------

MUSIC-015 Basic Music - 3 Units

ADVISORY: Eligibility for ENGL-100; prior or concurrent enrollment in MUSIC-030

LMC Degree: ADR: Arts and Humanities; DA

Transfer: UC (UC transferable, but may not be combined with MUSIC-013) CSU Gen. Ed. Area C1; IGETC Area 3A

This course is an introduction to music reading, functional keyboard, music theory and harmony and includes application of music theory and harmony to basic music compositions. Students will apply music theory and harmony across various styles of music, various cultures and various disciplines. Recommended for students who are not music majors or minors; or for students who are music majors needing reinforcement in basic musical concepts. The need to take this course is dependent upon theory placement exam. May not be repeated. SC

Online and Hybrid Sections

0015		ONLINE	Zuniga, L	6/15-7/8
------	--	--------	-----------	----------

This is an ONLINE section for 9 hours each week.

Email lzuniga@losmedanos.edu if you have questions.

0035		ONLINE	Henderson, S	6/15-7/9
------	--	--------	--------------	----------

This is an ONLINE section for 9 hours each week.

Please email instructor shenderson@losmedanos.edu if you have questions.

MUSIC-030 Basic Keyboard Skills - 1.5 Units

LMC Degree: DA

Transfer: UC, CSU

This course is designed to develop reading skills in basic music notation in relation to the keyboard. Study of piano technique, ensemble and solo playing, easy repertoire preparation and interpretation will be covered. Does not fulfill piano requirement for music major, however this class provides fundamental skills and a solid foundation for anyone beginning their music study. May not be repeated. LR

Online and Hybrid Sections

0018		ONLINE	Henderson, S	6/15-7/9
------	--	--------	--------------	----------

This is an ONLINE section for 9 hours each week.

Please email shenderson@losmedanos.edu if you have questions.

NURSING - REGISTERED**RNURS-020 Transition to the RN Program - .3 Unit**

PREREQUISITE: Accepted to the Registered Nursing Transition Program

LMC Degree: DA

Transfer: CSU

This RN transition course is required of nursing students who meet the admission criteria to be accepted into the third semester of the Registered Nursing program as Licensed Vocational Nurses (LVN) or as transfer students. Emphasis is on Nursing Process, the RN scope of practice, the Registered Nursing program curriculum plan and expectations, competency in drug dosage calculations, and use of campus resources. May not be repeated. P/NP

0431	M	9:00-2:50pm	CC3-340	Staff, L	8/17-8/17
------	---	-------------	---------	----------	-----------

NURSING - VOCATIONAL**VONUR-008 Medical Terminology for Healthcare Occupations - 1 Unit**

ADVISORY: ENGL-100

LMC Degree: DA

This course provides an integrated approach to learning and using medical terminology for the person interested in becoming a healthcare professional or one who works in a healthcare occupation. May not be repeated. LR

Online and Hybrid Sections

0432		ONLINE	Reno, S	Semester
------	--	--------	---------	----------

This is an ONLINE section for 3 hours each week.

Email sreno@contracosta.edu if you have questions.

SEC	DAYS	HOURS	ROOM	INSTRUCTOR	DATES
-----	------	-------	------	------------	-------

VONUR-020 Drug Dosage Calculations for Health Occupations - 2 Units

LMC Degree: DA

This course will present mathematical skills and concepts needed by the healthcare worker to safely practice in the clinical setting. Content includes interpreting medication labels, calculating drug doses, intravenous flow rates, and enteral feeding and soak solutions. This class is designed for pre RN or LVN students as well as anyone else who is presently in or interested in the Allied Health field. May not be repeated. LR

Online and Hybrid Sections

0435		ONLINE	Turrigiano, V	6/15-8/6
------	--	--------	---------------	----------

This is an ONLINE section for 4.5 hours each week.

Email vturrigiano@losmedanos.edu if you have questions.

0434		ONLINE	Turrigiano, V	6/15-8/6
------	--	--------	---------------	----------

This is an ONLINE section for 4.5 hours each week.

Email vturrigiano@losmedanos.edu if you have questions.

NUTRITION**NUTRI-055 Introduction to Nutrition - 3 Units**

ADVISORY: Eligibility for ENGL-100

LMC Degree: DA

Transfer: UC, CSU

A study of the basic principles to be utilized for personal and family needs. Topics covered include the significance of food in human life; the various nutrients and energy; nutrition throughout the life cycle; selection of an adequate diet for health and disease prevention; the problems of over-nutrition and under-nutrition; and sources of valid nutrition information. May not be repeated. LR

Online and Hybrid Sections

0115		ONLINE	Pollett, L	Semester
------	--	--------	------------	----------

This is an ONLINE section for 9 hours each week.

Please email instructor lpollett@losmedanos.edu if you have questions.

9507		ONLINE	McConnell, D	Semester
------	--	--------	--------------	----------

This is an ONLINE section for 9 hours each week.

Please email instructor dmconnell@losmedanos.edu if you have questions.

PHILOSOPHY**PHIL-100 Introduction to Philosophy - 3 Units**

ADVISORY: Eligibility for ENGL-100

LMC Degree: ADR: Arts and Humanities; DA

Transfer: UC; CSU Gen. Ed. Area C2; IGETC Area 3B

Students will critically engage with core philosophical issues and questions, found in primary texts, regarding the topics of metaphysics, epistemology and possible other topics such as ethics, political philosophy, philosophy of religion, history of philosophy, philosophy of self and a life well lived. This course provides a survey of the discipline in its methodology and subject matter, allowing students the opportunity to understand themselves, their community and the pluralistic world around them, introducing students to evaluating philosophical arguments, methods, assumptions, and principles for consistency, relevance, and truth. May not be repeated. SC

Online and Hybrid Sections

0105		ONLINE	Sherick, B	Semester
------	--	--------	------------	----------

This is an ONLINE section for 9 hours each week.

Please email bsherick@losmedanos.edu if you have questions.

PHYSICAL SCIENCE

SEC	DAYS	HOURS	ROOM	INSTRUCTOR	DATES
-----	------	-------	------	------------	-------

PHIL-110 **Critical Thinking and Composition - 3 Units**

PREREQUISITE: ENGL-100

LMC Degree: DA

Transfer: UC; CSU Gen. Ed. Area A3; IGETC Area 1B

This course provides instruction in critical thinking, including traditional logic and argumentative composition. A series of substantial writing assignments (a minimum of 6,000 words total) focus on increasing the sophistication of students' argumentative writing skills. Theoretical models of critical thinking and composition will be applied to academic fields and textbooks, electronic and print media, advertisements, ethics, politics, and multi-cultural issues. Writing assignments will be evaluated for their quality in both critical thinking and composition. May not be repeated. SC

Online and Hybrid Sections

0106	ONLINE	Smith, J	Semester
------	--------	----------	----------

This section is an ONLINE section for 9 hours each week.

Please email instructor jsmith@losmedanos.edu if you have questions.

PHYSICAL SCIENCE

PHYS-005 **General Physical Science - 3 Units**

ADVISORY: Eligibility for ENGL-100

LMC Degree: ADR: Natural Sciences; DA

Transfer: UC; CSU Gen. Ed. Area B1; IGETC Area 5A

This is an introduction to the major disciplines of physical science; physics, chemistry, earth science, and astronomy. Overarching ideas of disciplines will be emphasized, including energy and its transformations, the periodic table, plate tectonics, and the life cycles of stars. Critical thinking, relationships between the disciplines, and applications to everyday life are also emphasized. May not be repeated. LR

Online and Hybrid Sections

0085	ONLINE	Gonzalajec, T	Semester
------	--------	---------------	----------

This is an ONLINE section for 12 hours each week.

Please email tgonzalajec@losmedanos.edu if you have questions.

PHYSICS

PHYS-015 **Introduction to Physics - 4 Units**

PREREQUISITE: MATH-029 or MATH-025 or equivalent; or one year high school algebra

ADVISORY: Eligibility for ENGL-100

LMC Degree: ADR: Natural Sciences; DA

Transfer: UC; CSU Gen. Ed. Area B1, B3; IGETC Area 5A, 5C

An integrated study of physical concepts and principles with laboratory methods and techniques. An interdisciplinary approach will be used to develop an understanding of the nature of energy and matter interactions through a study of such topics as motion, thermal physics, electromagnetism, wave phenomena, and modern physics. Emphasis is placed on the creative process of scientific inquiry, on the aesthetics of science, and on the limitations and implications of scientific knowledge. Skills in critical thinking, problem-solving, and effective learning will be developed through the course. May not be repeated. SC

Online and Hybrid Sections

0033	ONLINE	Moore, R	Semester
------	--------	----------	----------

This is an ONLINE section for 18 hours each week.

Please email rmoore@losmedanos.edu if you have questions.

SEC	DAYS	HOURS	ROOM	INSTRUCTOR	DATES
-----	------	-------	------	------------	-------

POLITICAL SCIENCE

POLSC-010 **Introduction to American Government: Institutions and Ideals - 3 Units**

ADVISORY: Eligibility for ENGL-100

LMC Degree: ADR: Social and Behavioral Sciences; DA

Transfer: UC; CSU Gen. Ed. Area D; IGETC Area 4H; C-ID POLS 110

A comprehensive introduction to the issues, institutions and ideals of American government, with special emphasis on the Constitutions of the United States and the State of California. The historic development of national, state and local government since the eighteenth century will be emphasized. Special attention will be paid to the rights and obligations of citizenship and our heritage of social and ethnic diversity. The completion of Political Science (POLSC) 10 partially satisfies the American History and Institutions CSU transfer requirement. May not be repeated. SC

Online and Hybrid Sections

0133	ONLINE	Duwe, M	Semester
------	--------	---------	----------

This is an ONLINE section for 9 hours each week.

Email questions to instructor mduwe@losmedanos.edu.

0135	ONLINE	Hassan, A	Semester
------	--------	-----------	----------

This is an ONLINE section for 9 hours each week.

Please email ahassan@losmedanos.edu if you have questions.

PROCESS TECHNOLOGY

PTEC-007 **Industrial Technology Career Skills - 1 Unit**

ADVISORY: Eligibility for ENGL-100

LMC Degree: DA

Transfer: CSU

This highly interactive course gives students awareness and know-how to succeed in the industrial technology environment. The student will learn about personal and interpersonal interactions including self motivation, communication, teamwork, work/life balance, shift operations behavior, personal vision, confidence, initiative, attitude, personal appearance and positive behavior. The student will learn about working in the industrial technology environment and acquire these skills through a series of interactions with the instructor and other students utilizing a variety of learning media. May not be repeated. SC

Online and Hybrid Sections

0500	ONLINE	Martin, J	Semester
------	--------	-----------	----------

This is an ONLINE section for 3 hours each week.

Email jmartin@losmedanos.edu if you have questions.

PTEC-010 **Introduction to Process Technology - 3 Units**

ADVISORY: Eligibility for ENGL-100

LMC Degree: DA

Transfer: CSU

This introductory course will provide a clear overview of everyday life in the Process Technology industry. The student will learn about and experience first hand the variety of equipment used in typical processes and see how important safety and environmental considerations are in petrochemical operations. The class includes labs and field trips to typical chemical and petroleum manufacturing plants. The student is expected to climb ladders to the top of processing units, wear and carry safety equipment, and work in confined spaces. May not be repeated. SC

Online and Hybrid Sections

0501	ONLINE	Cruz, W	Semester
------	--------	---------	----------

This is an ONLINE section for 9 hours each week.

Email instructor at wacruz@losmedanos.edu if you have questions.

SIGN LANGUAGE

SEC	DAYS	HOURS	ROOM	INSTRUCTOR	DATES
PTEC-012					
Petrochemical Safety, Health, and Environment - 1 Unit					
ADVISORY: PTEC-010; eligibility for ENGL-100					
LMC Degree: DA					
Transfer: CSU					
This course provides an in-depth view of how important safety and environmental considerations are in the petrochemical industry. Covers the various government regulatory groups that oversee this industry and explains why the use of planning, protection, and preventative procedures enable the petrochemical industries to provide occupations that are interesting, rewarding and safe. May not be repeated. SC					
Online and Hybrid Sections					
0502			ONLINE	Cruz, W	Semester
This is an ONLINE section for 3 hours each week.					
Email instructor at wcruz@losmedanos.edu if you have questions.					

PSYCHOLOGY

PSYCH-010					
Individual and Social Processes - 3 Units					
ADVISORY: Eligibility for ENGL-100					
LMC Degree: ADR: Social and Behavioral Sciences; DA					
Transfer: UC; CSU Gen. Ed. Area D; IGETC Area 4I					
This psychology course is designed to study selected concepts and principles of Psychology. Emphasis is on the functional aspects of individual and group behavior. It will focus on Psychology as a discipline within the Behavioral Sciences and its relationship to Anthropology and Sociology. Areas of study will include the understanding of human behavior from philosophical and theoretical viewpoints, stages in human development and the social and psychological influences of one's self-concept. This course meets the graduation requirement for general education for Behavioral Sciences. May not be repeated. SC					
Online and Hybrid Sections					
0129			ONLINE	Gayton, L	Semester
This is an ONLINE section for 9 hours each week.					
Please email lgayton@losmedanos.edu if you have questions.					

PSYCH-011					
General Psychology - 3 Units					
ADVISORY: Eligibility for ENGL-100					
LMC Degree: ADR: Social and Behavioral Sciences; DA					
Transfer: UC; CSU Gen. Ed. Area D; IGETC Area 4I					
This introduction to psychology serves as a preparation for further study in this field. The focus of the course is the study of human behavior and its contributions to understanding social evolution, interpersonal relationships, and healthy and disordered functioning. The goals of this field, its evolution as a behavioral science, its varied practical applications, current controversial issues and views for understanding our present social and world conditions are discussed. To gain this understanding, the content includes the study of: motivation, mind and body relationship, individual differences, developmental stages, the role of learning and cognitive functioning, gender similarities and differences, and the value and limitations of mental health therapies. An interdisciplinary approach is used to communicate how bioscience, sociology, anthropology and current affairs are interrelated in the study and development of this discipline. May not be repeated. SC					
Online and Hybrid Sections					
0036			ONLINE	Davi, E	Semester
This is an ONLINE section for 9 hours each week.					
Please email edavi@losmedanos.edu if you have questions.					
0037			ONLINE	Davi, E	Semester
This is an ONLINE section for 9 hours each week.					
Please email edavi@losmedanos.edu if you have questions.					
9523			ONLINE	Davi, E	Semester
This is an ONLINE section for 9 hours each week.					
Email edavi@losmedanos.edu if you have questions.					

SEC	DAYS	HOURS	ROOM	INSTRUCTOR	DATES
PSYCH-017					
Introduction to Research Methods In Psychology - 3 Units					
PREREQUISITE: PSYCH-011; MATH-110					
ADVISORY: Eligibility for ENGL-100					
LMC Degree: DA					
Transfer: UC, CSU Gen. Ed. Area D; IGETC Area 4I; C-ID PSY 200					
This course is an introduction to scientific methodology in psychology and other behavioral sciences. Emphasis is placed on descriptive, experimental, and applied research. Topics include hypothesis formation, review of professional literature, research design, collection of data, statistical analysis, and scientific report writing. May not be repeated. SC					
Online and Hybrid Sections					
9503			ONLINE	Godinez, M	Semester
This is an ONLINE section for 9 hours each week.					
Please email mgodinez@losmedanos.edu if you have questions.					

RECORDING ARTS

RA-020					
Recording Arts II - 3 Units					
PREREQUISITE: RA-010					
ADVISORY: Eligibility for ENGL-100					
LMC Degree: DA					
Transfer: CSU					
This course is the second semester course in the recording arts sequence and is designed to familiarize the student with the professional recording environment and the fundamentals of engineering. Topics include: overview of recording studio design, the recording team, detailed description of the recording chain with emphasis on LMC's state-of-the-art recording system, system interconnection, microphones, microphone technique and mixing consoles. Meets the LMC Recording Arts Associate Degree and Certificate requirements. May not be repeated. LR					
Online and Hybrid Sections					
0113			ONLINE	Shiner, R	Semester
This is an ONLINE section for 9 hours each week.					
Please email rshiner@losmedanos.edu if you have questions.					

SIGN LANGUAGE

SIGN-050					
Elementary American Sign Language I - 5 Units					
ADVISORY: ENGL-095					
LMC Degree: DA					
Transfer: UC, CSU GE Area C2; IGETC Area 6A					
An intensive visual/finger/hand/ signing approach to understanding and communicating in American Sign Language as it is used in the United States, and other English speaking cultures. The content used in learning the language is drawn from the rich deaf and hearing cultures of the United States. May not be repeated. SC					
Online and Hybrid Sections					
9544			ONLINE	Keane, M	6/15-8/6
This is an ONLINE section for 11.25 hours each week.					
Please email mkeane@losmedanos.edu if you have questions.					
0207			ONLINE	Williams, J	6/15-8/6
This is an ONLINE section for 11.25 hours each week.					
Please email jwilliams@losmedanos.edu if you have questions.					
0213			ONLINE	Williams, J	6/15-8/6
This is an ONLINE section for 11.25 hours each week.					
Please email jwilliams@losmedanos.edu if you have questions.					

SOCIOLOGY

SEC	DAYS	HOURS	ROOM	INSTRUCTOR	DATES
-----	------	-------	------	------------	-------

SIGN-070 Fingerspelling I - 5 Unit

PREREQUISITE: SIGN-065, SIGN-050 or equivalent

ADVISORY: Concurrent enrollment in ENGL-095 or higher level English course.

LMC Degree: DA

Transfer: CSU

This course provides an introduction to the concentrated instruction in the expressive and receptive practice of beginning fingerspelling. May not be repeated. SC

Online and Hybrid Sections

0256	ONLINE	Keane, M	6/15-7/2
------	--------	----------	----------

This is an ONLINE section for 6 hours each week.

Please email mkeane@losmedanos.edu if you have questions.

SIGN-071 Fingerspelling II - 5 Unit

PREREQUISITE: SIGN-070

ADVISORY: Concurrent enrollment in ENGL-095 or higher level English course.

LMC Degree: DA

Transfer: CSU

This course is a continuation of the concentrated instruction in the expressive and receptive practice of advanced fingerspelling. May not be repeated. SC

Online and Hybrid Sections

0257	ONLINE	Keane, M	7/6-7/23
------	--------	----------	----------

This is an ONLINE section for 6 hours each week.

Please email mkeane@losmedanos.edu if you have questions.

SIGN-072 Deaf Culture - 3 Units

PREREQUISITE: SIGN-066, SIGN-051 or equivalent

ADVISORY: Concurrent enrollment in ENGL-095 or higher level English course.

LMC Degree: DA

Transfer: UC, CSU

This course provides an introduction to the Deaf Culture as it applies to the historical, cultural and social experiences of our Deaf community. Course will introduce issues directly related to the Deaf including education and assimilation in bilingual/bicultural settings. Course taught in American Sign Language. This course is part of a certificate in American Sign Language Proficiency. May not be repeated. SC

Online and Hybrid Sections

0255	ONLINE	Williams, J	Semester
------	--------	-------------	----------

This is an ONLINE section for 9 hours each week.

Please email jwilliams@losmedanos.edu if you have questions.

SEC	DAYS	HOURS	ROOM	INSTRUCTOR	DATES
-----	------	-------	------	------------	-------

SPANISH

SPAN-046 Spanish for the Professions - 3 Units

LMC Degree: DA

Transfer: CSU

Designed to teach present and future professional public servants the necessary vocabulary and structures for effective communication in interviews, collecting data, giving instructions, visits, general courtesies, etc. Some attention to local dialect differences. The content used in learning the language is drawn from the rich Mexican, Chicano and Latino cultures and cultural and behavioral attitudes appropriate for relating to persons of Hispanic heritage will be suggested. May not be repeated. SC

Online and Hybrid Sections

0266	ONLINE	Kline, F	Semester
------	--------	----------	----------

This is an ONLINE section for 9 hours each week.

Please email fkline@losmedanos.edu if you have questions.

SPAN-047 Spanish for Healthcare Professionals - 3 Units

LMC Degree: DA

Transfer: CSU

This beginning course in Spanish is designed for students whose professional careers and personal interest take them to the healthcare field. This course will enable students to convey conversations with Spanish-speaking patients and their families. The students will develop basic skills in the target language to carry on medical/nursing functions or tasks. This course is also helpful for students who have a basic knowledge of Spanish whose goal is to apply the target language to a healthcare setting. May not be repeated. SC

Online and Hybrid Sections

0267	ONLINE	Kline, F	Semester
------	--------	----------	----------

This is an ONLINE section for 9 hours each week.

Please email fkline@losmedanos.edu if you have questions.

SPAN-050 Elementary Spanish I - 5 Units

LMC Degree: DA

Transfer: UC; CSU Gen. Ed. Area C2; IGETC Area 6; C-ID SPAN 100

A visual/oral/aural approach to understanding, speaking, reading, and writing Spanish as it is used in Mexico, Central/South America, Spain, and the Southwestern United States. The content used in learning the language is drawn from the rich Mexican, Chicano, African, Afro-Caribbean and Latinx cultures. It is highly recommended that upon completion of SPAN-050, the second course SPAN-051 be taken the following semester. This course is equivalent to two years of high school Spanish. May not be repeated. SC

Online and Hybrid Sections

0269	ONLINE	Kline, F	6/15-8/8
------	--------	----------	----------

This is an ONLINE section for 11.25 hours each week.

Please email fkline@losmedanos.edu if you have questions.

5934	ONLINE	Coronado Barraza, V	Semester
------	--------	---------------------	----------

This is an ONLINE section for 15 hours each week.

Email vcoronado@losmedanos.edu if you have questions.

0273	ONLINE	Coronado Barraza, V	Semester
------	--------	---------------------	----------

This is an ONLINE section for 15 hours each week.

Email vcoronado@losmedanos.edu if you have questions.

SOCIOLOGY

SOCIO-015 Introduction to Sociology - 3 Units

ADVISORY: Eligibility for ENGL-100

LMC Degree: ADR: Social and Behavioral Sciences; DA

Transfer: UC; CSU Gen. Ed. Area D; IGETC Area 4J; C-ID SOCI 110

Introduction to the principles and theoretical perspectives of sociology. Topics will include sociological research methods, culture, groups, socialization, collective behavior, race and gender inequality, stratification, and urbanization. Comprehensive reading and writing exercises and assignments will provide students an opportunity to develop critical ways of looking at sociological phenomena. An examination of the various modes of inquiry used by behavioral scientists will encourage students to develop an awareness of the importance as well as the complexity of data collection and reporting. May not be repeated. SC

Online and Hybrid Sections

4335	ONLINE	Sample, A	Semester
------	--------	-----------	----------

This is an ONLINE section for 9 hours each week.

Please email asample@losmedanos.edu if you have questions.

9514	ONLINE	Sample, A	Semester
------	--------	-----------	----------

This is an ONLINE section for 9 hours each week.

Please email asample@losmedanos.edu if you have questions.

4337	ONLINE	Sample, A	Semester
------	--------	-----------	----------

This is an ONLINE section for 9 hours each week.

Please email asample@losmedanos.edu if you have questions.

SPEECH/COMMUNICATIONS

SEC	DAYS	HOURS	ROOM	INSTRUCTOR	DATES
-----	------	-------	------	------------	-------

SPAN-051 Elementary Spanish II - 5 Units
PREREQUISITE: SPAN-050 or 2 years of high school Spanish
ADVISORY: Concurrent enrollment in ENGL-095 or higher level English course.
LMC Degree: DA
Transfer: UC; CSU Gen. Ed. Area C2; IGETC Area 3B, 6; C-ID SPAN 110
 Continuation of the visual/oral/aural approach to understanding, speaking, reading, and writing Spanish. This is the second course of a four semester sequence. Course material emphasizes the cultures of Mexico, Central/South America, the Caribbean, Spain and the Chicano of the Southwestern United States. This course is equivalent to two years of high school Spanish. Please note that the department provides an exam for students who wish to challenge the prerequisite. Please contact lhuffman@losmedanos.edu or vcoronado@losmedanos.edu for more information. SC

Online and Hybrid Sections

0270	ONLINE	Huffman, L	6/15-8/8
<i>This course is ONLINE except for the final proctored exam. Students must have computer capacity/capability for video web conferencing. Email lhuffman@losmedanos.edu for syllabus prior to June 15th.</i>			
0271	ONLINE	Huffman, L	6/15-8/8
<i>This course is ONLINE except for the final proctored exam. Students must have computer capacity/capability for video web conferencing. Email lhuffman@losmedanos.edu for syllabus prior to June 15th.</i>			

SPAN-052 Intermediate Spanish I - 5 Units

PREREQUISITE: SPAN-051 or 3 years high school Spanish
LMC Degree: DA
Transfer: UC; CSU Gen. Ed. Area C2; IGETC Area 3B, 6; C-ID SPAN 200
 This course uses the communicative approach in the acquisition of Spanish. Students will gain skills in listening and understanding conversation at the intermediate level, writing, and reading. The third in a series of four semesters of college level Spanish emphasizes the literature and culture of Latin America and Spain. It is highly recommended that upon completion of SPAN-52, the fourth course SPAN-053 be taken the following semester. May not be repeated. SC

Online and Hybrid Sections

0275	ONLINE	Coronado Barraza, V	Semester
<i>This is and ONLINE section for 15 hours each week. Email vcoronado@losmedanos.edu if you have questions.</i>			

SPAN-053 Intermediate Spanish II - 5 Units

PREREQUISITE: SPAN-052 or 4 years high school Spanish
LMC Degree: DA
Transfer: UC; CSU Gen. Ed. Area C2; IGETC Area 3B, 6I C-ID SPAN 210
 This course uses the communicative approach in the acquisition of Spanish. Students will gain skills in listening and understanding conversation at the intermediate level, writing, and reading. The fourth in a series of four semesters of college level Spanish emphasizes the literature and culture of Latin America and Spain. May not be repeated. SC

Online and Hybrid Sections

0276	ONLINE	Coronado Barraza, V	Semester
<i>This is and ONLINE section for 15 hours each week. Email vcoronado@losmedanos.edu if you have questions.</i>			

SEC	DAYS	HOURS	ROOM	INSTRUCTOR	DATES
-----	------	-------	------	------------	-------

SPAN-060 Exploring Latino Cinema: A Critical Analysis - 3 Units
PREREQUISITE: SPAN-052 or 4 years of high school Spanish
ADVISORY: Concurrent enrollment in ENGL-095 or a higher level English course
LMC Degree: DA
Transfer: UC; CSU Gen. Ed. Area C1

This course uses Intermediate Spanish to explore classic and contemporary Latin American film that examines a wide variety of themes, genres and cultural experiences. Students analyze Spanish films (both with and without subtitles) that explore how culture has changed in Spanish speaking countries and in the United States and how memory and oblivion, marginalization of individuals and groups, immigration and globalization have influenced that change. Students screen film works from the United States, Mexico, the Caribbean, Central and South America and Spain and provide both oral and written analysis in Spanish of the films. May not be repeated. SC

Online and Hybrid Sections

0277	ONLINE	Huffman, L	Semester
<i>This course is completely ONLINE for 9 hours each week. Email lhuffman@losmedanos.edu for syllabus prior to June 15th.</i>			

SPEECH/COMMUNICATIONS

SPCH-110 Speech Communication - 3 Units

ADVISORY: Eligibility for ENGL-100
LMC Degree: ADR: Arts and Humanities; DA
Transfer: UC; CSU Gen. Ed. Area A1; IGETC Area 1C; C-ID COMM 110
 This course covers the fundamentals of public speaking with an emphasis on: selection and research of subjects; organization and support of ideas; and development and delivery of various forms of speeches. May not be repeated. SC

Online and Hybrid Sections

0125	ONLINE	Feere, Z	Semester
<i>This is and ONLINE section for 9 hours each week. Email zfeere@losmedanos.edu if you have questions.</i>			
0131	ONLINE	Rodolfo, S	Semester
<i>This is and ONLINE section for 9 hours each week. Email srodolfo@losmedanos.edu if you have questions.</i>			
0132	ONLINE	Rodolfo, S	Semester
<i>This is and ONLINE section for 9 hours each week. Email srodolfo@losmedanos.edu if you have questions.</i>			
4471	ONLINE	Jones, M	Semester
<i>This is and ONLINE section for 9 hours each week. Email mjones@losmedanos.edu if you have questions.</i>			
9509	ONLINE	Petersen, N	Semester
<i>This is and ONLINE section for 9 hours each week. Email npetersen@losmedanos.edu if you have questions.</i>			
9511	ONLINE	Bobadilla, T	Semester
<i>This is and ONLINE section for 9 hours each week. Email tbadilla@losmedanos.edu if you have questions.</i>			
9532	ONLINE	Petersen, N	Semester
<i>This is and ONLINE section for 9 hours each week. Email npetersen@losmedanos.edu if you have questions.</i>			
9541	ONLINE	Bobadilla, T	Semester
<i>This is and ONLINE section for 9 hours each week. Email tbadilla@losmedanos.edu if you have questions.</i>			

TRAVEL

SEC	DAYS	HOURS	ROOM	INSTRUCTOR	DATES
-----	------	-------	------	------------	-------

SPCH-120 **Argumentation and Debate - 3 Units**

ADVISORY: Eligibility for ENGL-100; SPCH-110

LMC Degree: ADR: Social and Behavioral Sciences; DA

Transfer: UC, CSU Gen. Ed. Area A1, A3; IGETC Area 1C; C-ID COMM 120

This course studies the principles of argumentation theory through lecture and in class debate performances. Issues covered include the analysis of propositions, current events, evidence, advocacy, formal traditions in public policy, and critical reasoning skills. Students will perform in class debates centered around philosophical, ethical, and/or current event issues. May not be repeated. SC

Online and Hybrid Sections

0134	ONLINE	Feere, Z	Semester
------	--------	----------	----------

This is an ONLINE section for 9 hours each week.

Email zfeere@losmedanos.edu if you have questions.

SUPERVISED TUTORING

SPTUT-020 **Supervised Tutoring - 0 Unit**

ADVISORY: Student must be referred by a counselor or instructor per Title 5, 58170(e)

LMC Degree: NC

Do you need a little help with your studies? Whether you are writing a term paper, studying for a math test or need to brush up on your child development skills you can get individualized tutoring from trained tutors in any one of the many labs at both the Pittsburg and Brentwood campuses. Ask your instructor or counselor for a referral to receive tutoring in basic skills, academic and vocational subject matter by enrolling in this free, non-credit course. P/NP

0208		Staff, L	Semester
------	--	----------	----------

Hours by arrangement: Center for Academic Support

0209		Staff, L	Semester
------	--	----------	----------

Hours by arrangement: Math Lab

9526		Staff, L	Semester
------	--	----------	----------

Hours by arrangement: Brentwood Center Math Lab

TRAVEL

TRAVL-096 **Alaska Destination Specialist - 1.5 Units**

LMC Degree: DA

Transfer: CSU

This course includes a discussion of geography, tourist attractions, activities, and accommodations for each of the major areas of Alaska. Particular emphasis is placed on each area's unique appeal. The course presents what's special about Alaska, sales strategies for tour products and niche markets, suggested itineraries, secrets of each region and local information. Resources for more in-depth research are also covered. May not be repeated. SC

Online and Hybrid Sections

0119	ONLINE	McGill, C	Semester
------	--------	-----------	----------

This is an ONLINE section for 4.5 hours a week.

Please email instructor cmcgill@losmedanos.edu when you are enrolled.

Academic Scholarship Standards

Attendance

Students are expected to be punctual and attend all courses in which they are enrolled. Students may be dropped by the instructor for failure to attend class in the following circumstances:

1. Failure to attend first class meeting.
2. Absence from three consecutive weeks of instruction.
3. At any point when it is concluded that absences have irretrievably affected the student's progress in his/her course-work.

Grades should not be used as punishment for absences. However, academic grades may be lowered to the degree that instructors can estimate the loss of cognitive, affective, or skills learning due to student absences.

Grading

The evaluation in college-level courses is a prime responsibility of the instructor. Such evaluation involves the measurements of achievement against the objectives of the course and the assignment of a letter grade to denote the student's degree of success.

The grade, as submitted by the instructor, shall be considered final and permanent. Grades cannot be changed by submitting additional course work or taking examinations after the semester (or term) is completed. Under state law, the instructor's determination is final unless the grade given was the result of 1) mistake, 2) fraud, 3) bad faith, or 4) incompetency. (Ed. Code Section 76224.)

No grade may be challenged more than one year after the end of the session in which the grade was assigned. For information on the policy regarding grade challenges, contact the Office of Student Life.

Final Grades

Final grades can be accessed at the end of instruction, following instructor grade entry online.

Students can view their final grades by logging into InSite or EllucianGo mobile app.

Students will lose their California College Promise Grant (CCPG) upon two (2) consecutive semesters on probation and will need to appeal.

Evaluative Symbols Grading Scale

Symbol & Definition	Grade Points
A Excellent	4
B Good.	3
C Satisfactory	2
D Passing, less than satisfactory.	1
F Failing.	0
P Pass (at least satisfactory — C or better — units awarded not counted in GPA)	
NP No Pass (less than satisfactory or failing — units not counted in GPA)	
SP Satisfactory Progress towards completion of the course (used for noncredit courses only and is not supplemented by any other symbol)	
W Indicates withdrawal from a course within the allowed time	
EW Excused withdrawal, such as a medical withdrawal or a withdrawal due to extenuating circumstances, may be requested at any point in the semester with supporting documentation.	
MW Military Withdrawal occurs when a student who is a member of an active or reserve US Military service receives orders compelling a withdrawal from courses	
I Incomplete — Academic work that is incomplete for unforeseeable emergency and justifiable reasons at the end of a term; student must be passing course to be eligible for incomplete. Student will not re-enroll in the course to complete pending assignments, projects or exams. A final grade is assigned when the work has been completed or after one year.	

Pass/No Pass Grade Option:

The purpose of the Pass/No Pass (P/NP) option is to allow students to take challenging courses while avoiding undue concern for their grade point averages. Students who select this option are, however, expected to complete the course, comply with attendance requirements, and comply with all other requirements of the course.

Selected courses have been labeled with "SC" to indicate student choice for the P/NP option. If students do not choose the P/NP option before the deadline, they will be issued a letter grade for the course. It is often best to discuss this choice with a counselor.

In order to exercise this option, a petition must be electronically submitted to the Admissions & Records Office at the time of registration or no later than the deadline listed for a full-semester class. Electronic forms are located on InSite in the "Student Forms" tile and can be submitted to the Admissions & Records Office remotely. Petitions for summer session and short-term courses must be filed within the first thirty percent of the course. **After the deadline has passed, the grading choice may not be reversed.**

Important information related to the P/NP option:

- A P grade represents a letter grade of A, B, or C
- A NP grade represents a letter grade of D or F
- Units earned on a P/NP basis will not be used to calculate grade point averages
- Units attempted for which NP is recorded will be considered in factoring probation and dismissal status
- Units earned on a P/NP basis will apply to the 60 units required for an associate degree
- Students should be aware that other colleges and universities may or may not limit the number of P units that will be accepted from transfer students.

Probation & Dismissal

Probation and dismissal status is based on coursework that is attempted and/or completed within the Contra Costa Community College District. Students should be aware that their academic standing is not based solely on units completed at Los Medanos College.

Categories of Probation & Dismissal

- **Probation 1 Status:** One (1) semester with cumulative GPA under 2.0 with 12 or more cumulative units attempted, and/or 50 percent or more of attempted courses resulting in a W, I, and/or NP.
- **Probation 2 Status:** Two (2) consecutive semesters with cumulative GPA under 2.0 with 12 or more cumulative units attempted, and/or 50 percent or more of attempted courses resulting in a W, I, and/or NP.
- **Dismissal Status:** Three (3) consecutive semesters with cumulative GPA under 2.0 with 12 or more cumulative units attempted, and/or 50 percent or more of attempted courses resulting in a W, I, and/or NP.

Notification of Probation and Dismissal

Students on Probation or Dismissal status are notified by the department of Student Success & Retention Programs as soon as possible, but not later than the end of the following term.

Students on Probation II and/or Dismissal status are required to meet with a Student Success & Retention counselor.

Reinstatement for Academic Probation and Dismissal

A student on Probation I, II, or Dismissal status will be required to complete the steps below prior to enrolling in courses. Requirements are based on students' respective status.

Probation I Status:

Step 1: Review notice of Probation I status emailed to InSite.4cd.edu address

Step 2: Complete online Probation I Workshop

Probation II Status:

Step 1: Review notice of Probation II status emailed to InSite.4cd.edu address

Step 2: Register and attend LMC Probation II Workshop (go to www.losmedanos.edu/student-services/engage/workshops.asp)

Step 3: Earn a minimum term GPA 2.0 or better with no grade below C, including NP, I or W

Step 4: Submit Academic Progress Report (APR) by date specified to LMC Student Success & Retention Programs (SSRP).

Step 5: Meet with a Student Success & Retention Counselor during specified dates.

NOTE: Students on Probation II will lose their registration priority but may appeal their registration date with Admissions & Records. Students will also lose their eligibility for the California College Promise Grant (CCPG). For more information on how to complete an appeal please check in with the Financial Aid Office.

Based on student cumulative GPA, one or more semesters may be required to remove a student from Probation II status.

Dismissal Status:

Step 1: Review notice of dismissal status emailed to InSite.4cd.edu address

Step 2: Register online to meet with a Student Success & Retention Coordinator (SSRP) to begin the process for reinstatement (go to www.losmedanos.edu/student-services/engage/workshops.asp).

Step 3: Complete additional requirements and submit supporting documents.

Step 4: Receive notification of Petition for Reinstatement Status (i.e. approved, denied, or pending) at InSite.4cd.edu address within 10 business days after submission of supporting documents.

Step 5: If reinstatement petition is granted, student may register for classes and must adhere to the following guidelines:

- Earn a minimum term GPA 2.0 or better with no grade below C, including no NP, I or W.
- Submit Academic Progress Report (APR) by date specified to LMC Student Retention and Support Services to maintain admissibility.
- Meet with a Student Success & Retention Counselor during specified date.

Students who fail to earn a term GPA 2.0 or better with no grade below a C, including an NP, I or W and/or fail to submit an APR will be dismissed for a period of one semester. Based on student cumulative GPA, one or more semesters may be required to remove student from dismissal status.

NOTE: Students on Dismissal will lose their registration priority but may appeal their registration date with Admissions & Records, if their Hold Release petition is approved. Students will also lose their eligibility for the California College Promise Grant (CCPG). For more information on how to complete an appeal please check in with the Financial Aid Office.

Course Repetition

Courses are not repeatable unless noted within the course descriptions listed in the catalog. Students may repeat a non-repeatable course only to alleviate a substandard grade of D, F or NC/NP.

Students are limited to enrolling in credit classes a maximum of three times. This includes students earning substandard grades or dropping with a "W." Students enrolling for a third time will be blocked from registration and required to submit a petition to repeat. Students are urged to manage course load and be aware of the number of enrollments for a specific course. Carefully consider dropping courses and understand all deadlines. Take advantage of tutoring and other support services to achieve successful completion of all courses.

When a course is repeated to alleviate a substandard grade, the previous grade will be disregarded in computing the student's grade point average. The substandard grade will remain on the student's transcript with a notation that the course has been repeated.

Courses that are repeatable are noted in the college catalog with the number of repeats allowed. Students may not repeat a course beyond the maximum repeats, even to alleviate substandard grades.

Course repetition cannot be used to make up an incomplete 'I' grade.

Withdrawals

- Students who have documented extenuating circumstances such as accidents, illness or other circumstances beyond the control of the student, may apply for a withdrawal after the 75 percent of the term (petition required).
- A 'W' shall not be assigned if the student withdraws due to the impact of fire, flood or other extraordinary conditions (petition required).
- In the case of discriminatory treatment or retaliation for discriminatory treatment a 'W' shall not be assigned.
- Active or reserve military students who receive orders compelling a withdrawal from courses will receive a military withdrawal which shall not be counted in the limit of withdrawals or progress probation.

Repeat of Biology Courses

Students who have received two substandard grades or 'W's or any combination in the same Biology 40, 45 or 50 course will be blocked from future enrollment in that course. Students may appeal the policy using the *Petition for Course Repetition* form.

Academic Renewal Policy

Based on the Academic Renewal Policy, substandard grades may be disregarded if they are not reflective of a student's demonstrated academic ability. If Academic Renewal is approved, the student's permanent record will be notated with appropriate comments and the substandard (D, F, NC/NP) unit values will not be computed in the cumulative grade point average. The "renewed" courses and the related grades will not be removed from the record, as the district is required to show a complete and accurate academic record for every student (Title 5, Section 55046). Students **MUST** meet with a counselor to review options for Academic Renewal, as this procedure is irreversible.

1. Only substandard grades will be renewed
2. You must not have received any D's, F's or NC/NP since the substandard work (minimum 2.0 since substandard work)
3. Up to 30 units may be renewed; district courses can be combined up to the maximum of 30 units, however each college will adjust their own work.
4. Courses that have already been removed from GPA by course repetition will not be renewed.
5. You must complete either:
 - a. Nine units of work with a 3.5 cumulative grade point average;
 - b. 12 units of work with a 3.0 cumulative grade point average;
 - c. 15 units of work with a 2.5 cumulative grade point average; or
 - d. 20 units of work with a 2.0 cumulative grade point average.

The unit count begins the semester after the last substandard grade was received. The course work upon which the application for alleviation is based, may have been completed within the Contra Costa Community College District or any other regionally accredited college or university, including upper division coursework.

Student Conduct and Discipline

Students shall conduct themselves consistent with the Student Code of Conduct while on campus or participating off campus in online or hybrid courses, or at college sponsored events or programs, including but not limited to field trips, student conferences, debate competitions, athletic contests, club-sponsored events, and international study programs, regardless of location. Students shall also conduct

themselves consistent with the Student Code of Conduct in any matter related to school activity or attendance.

Misconduct that constitutes grounds for disciplinary action includes, but is not limited to:

- Acts of academic dishonesty, including, but not limited to cheating, tampering, fabrication, plagiarism, or assisting others in an act of academic dishonesty
- Dishonesty, such as lying, plagiarism, knowingly furnishing false information, or reporting a false emergency to any college official,
- Forgery, alteration, misappropriation or theft, misuse of any District or college document, record, key, electronic device, or identification
- Unauthorized entry into, unauthorized use of or misuse of District property (including college facilities)
- Disruptive or abusive behavior, such as verbal harassment, habitual profanity or vulgarity, physical abuse, hate violence, intimidation, bullying, hazing, or stalking of any member of the college community, through any means, including e-mail, social media/networking, text messages, and other technological forms of communication
- Continued disruptive behavior, continued willful disobedience, habitual profanity or vulgarity, or the open and persistent defiance of the authority of, or persistent abuse of, college personnel
- Assault, battery, violence or threat of violence, or any willful misconduct which results in an injury or death of a student or District personnel or behavior that threatens the health and safety of any member of the college community
- Vandalism, graffiti, or other willful misconduct which results in cutting, defacing, or other damages to any real or personal property owned by the District or a member of the college community;
- Theft of District property, or property in the possession of, or owned by, a member of the college community
- Possession, consumption, sale, distribution or delivery of any alcoholic beverage in college buildings or on college grounds, or at college-sponsored or supervised activities
- The use, sale, distribution, or possession on campus of, or presence on campus under the influence of, any controlled substances, or any poison classified as such by Schedule D section 4160 of the Business and

Professions Code or other California laws on District property or at any District-sponsored event

- Willful or persistent smoking in any area where smoking has been prohibited by law or by regulation of the Governing Board
- Violation of District or college policies or regulations including but not limited to those concerning the formation and registration of student organizations, the use of college facilities or the time, place, and manner of public expression or the distribution of leaflets, pamphlets, or other materials
- Persistent serious misconduct where other means of correction have failed to bring about proper conduct

For a complete copy of the Student Code of Conduct, which includes additional information and expectations for student conduct call (925) 473-7468, or visit the college website at: www.losmedanos.edu/studentcodeofconduct/

Student Right-To-Know Reports

In compliance with the Student Right-to-Know and Campus Security Act of 1990 (Public Law 101-542), it is the policy of the Contra Costa Community College District and Los Medanos College to make the following information available:

- The completion or graduation rates of certificate or degree-seeking, first-time, full-time students beginning Fall 2014 and annually thereafter. Based on a cohort of first-time, full-time freshman with a declared program of study, 33.62% attained a certificate or degree or became 'transfer prepared' during a three-year period, from Fall 2014 to Spring 2017. Based on the cohort of first-time freshmen with a declared program of study, 8.58% transferred to another public institution in California (UC, CSU, or other California Community College) prior to attaining a degree or certificate or becoming "transfer-prepared" during a three-year period, from Spring 2015 to Spring 2017.
- Annual reports of criminal activity on campus and procedures for prevention of campus crime, as required by the Crime Awareness and Campus Security Act of 1991. This information is available, on request, from the campus Police Services Office or the LMC website under Campus Police.

Enrollment and Degree Verifications

Enrollment and Degree Verifications can now be done online through the National Student Clearinghouse. To obtain a free copy of the your official verification of enrollment (24 hours a day, 7 days a week), go to (www.losmedanos.edu). Log onto InSite Portal and click on “Student Planning”, then “Enrollment Verification” where you can obtain this free service.

If an organization needs to verify your enrollment or degree and will not accept your printed copy, refer them to: National Student Clearinghouse, 13353 Sunrise Valley Drive, Suite 300, Herndon, VA 20171, Web: (www.studentclearinghouse.org), E-mail: service@studentclearinghouse.org, Phone: (703) 742-4200, Fax: (703) 742-4239. Your enrollment information is sent to the Clearinghouse three times each semester. Rush requests from the Admissions & Records Office will be processed in 24 hours for \$5. Standard service is \$2 and will be processed in 3-4 business days.

Los Medanos College Campus Policies

Non-Discrimination Policy

It is the policy of the Contra Costa Community College District and Los Medanos College to provide an educational and employment environment in which no person shall be unlawfully subject to discrimination on the basis of ethnic group identification, national origin, religion, age, sex, sexual orientation, gender, race, color, medical condition, ancestry, marital status, physical or mental disability, or based on association with a person or group with one or more of these actual or perceived characteristics. This holds true for all students who are interested in participating in educational programs and/or extracurricular activities. Unlawful harassment, discrimination or denial of access of any employee/student with regard to the above characteristics is strictly prohibited. The lack of English language skills will not be a barrier to admission and participation in the college's education programs.

Inquiries regarding compliance and/or grievance procedures may be directed to the Los Medanos College Title IX Officer and Section 504/ADA Coordinator:

Contact: Tanisha M.J. Maxwell, Ph.D.
Vice President of
Student Services,

Phone: (925) 473-7421
Fax: (925) 427-1599

Requests for the elevation and addition of sports may also be directed to the Vice President of Student Services.

Inquiries/Complaint Procedures

Informal Procedure

Students who have questions about the procedures to file a complaint of unlawful discrimination or feel they have been discriminated against, may contact the local Title IX coordinator, Tanisha M.J. Maxwell, Ph.D., Vice President of Student Services, by calling (925) 473-7421. The Vice President may work with the student-complainant, respondent, and other appropriate college personnel to attempt an informal resolution. The President, or designee, will monitor the informal complainant process and any proposed resolution. The process will be completed within 30 calendar days of receiving the complaint. A record of the complaint and resolution will be kept.

Formal Procedure

Students also have the right to submit an unlawful discrimination complaint through a formal procedure. The Vice President will provide students with the District complaint form and forward the completed form to the District Vice Chancellor Human Resources.

Upon receipt of a formal complaint, the District will immediately notify the State Chancellor's Office. Within 10 calendar days of receipt, the District shall commence an investigation of the complaint and notify the complainant. The District has 90 calendar days in which to investigate the complaint and report the administrative findings to the complainant and the State Chancellor's Office. The complainant may appeal the administrative determination to the District Governing Board within 15 calendar days of notice of such determination. The District Governing Board has 45

calendar days in which to act on the appeal. Failure of the Board to act within the 45 days denotes approval of the administrative determination. The complainant has the right to file a written appeal with the State Chancellor's Office within 30 calendar days after the Governing Board issues the final District decision or permits the administrative decision to become final pursuant to the above. The Chancellor has discretion to accept or reject any such petition for review in employment discrimination cases.

Students may also contact the Office for Civil Rights at the following address: Office for Civil Rights, San Francisco Office U.S. Department of Education Old Federal Building 50 United Nations Plaza, Room 239 San Francisco, CA 94102-4102 Telephone: (415) 556-4275; Fax: (415) 437-7783 TDD: (415) 437-7786; Email: OCR.SanFrancisco@ed.gov

Inquiries/Complaints on Basis of Disability

Inquiries regarding access, treatment, or employment on the basis of disability, should be directed to the Vice President of Student Services/ADA Coordinator, Los Medanos College, 2700 East Leland Rd., Pittsburg, CA 94565, (925) 473-7421, or TDD (925) 439-5709.

Reglamento de no Discriminación

El Distrito de Colegios Comunitarios del Condado de Contra Costa y el Los Medanos College están comprometidos a ofrecer igualdad de oportunidad en sus programas educacionales y vida estudiantil. El colegio no discrimina ni apoya la discriminación por cuestiones de origen étnico, edad, sexo, discapacidad física o mental, color, nacionalidad de origen, religión, orientación sexual, estatus de veterano, o condición médica, para el acceso a y trato de cualquiera de sus programas o actividades colegiales. La falta de conocimiento del idioma inglés no serán una barrera para la admisión y participación en los programas educativos vocacionales de la institución.

Este reglamento cumple con lo estipulado en el Título VI del Acta de 1964 de la Ley de Derecho Civil, con referencia a la discriminación por raza, color, o nacionalidad de origen; el Título IX de las Enmiendas a la Educación de 1972, referente a la discriminación por sexo; la Sección 504 del Acta de Rehabilitación de 1973, referente a la discriminación por discapacidad; el Acta de Discriminación de Edad de 1975 referente a la discriminación por edad; y el Reglamento del Distrito que aplica.

Contacte: Tanisha M.J. Maxwell, Ph.D.
Vicepresidenta
de Servicios Estudiantiles

Teléfono: (925) 473-7421

Fax: (925) 427-1599

Procedimientos de Quejas

Procedimiento Informal

Los estudiantes que tengan preguntas sobre el procedimiento para someter una queja de conducta discriminatoria o creen haber sido víctimas de una acción discriminatoria pueden notificar a la Coordinadora Local del Título IX. Contacte: Tanisha M.J. Maxwell, Ph.D., Vicepresidenta de Servicios Estudiantiles, teléfono: (925) 473-7421. El estudiante tiene la opción de seguir el procedimiento informal con Vicepresidenta de Servicios Estudiantiles, quien pudiera facilitar una solución informal a la queja con el personal apropiado del colegio y el alumno demandante. El Presidente del colegio,

o persona asignada, vigilarán el proceso de resolución de la queja informal y propondrán una solución a la queja. El proceso de resolución no deberá durar más de 30 días después de haberse recibido la queja. Se mantendrá un expediente de la queja y la resolución en los archivos correspondientes.

Procedimiento Formal

Estudiantes tienen el derecho de someter una queja de conducta discriminatoria por un procedimiento formal. La Administración Superior proporcionará al alumno con el formulario de quejas del Distrito y enviará el documento al Vice Canciller de Relaciones Humanas del Distrito una vez que este haya sido llenado. Una vez que se haya recibido la queja de manera formal, el Distrito notificará inmediatamente a la Oficina del Canciller del Estado. Dentro de los 10 días siguientes de haberse recibido la queja, el Distrito deberá comenzar una investigación formal y notificar de ello al alumno demandante. El Distrito contará con 90 días para investigar la queja y reportar los resultados administrativos al demandante y a la Oficina del Canciller del Estado. El demandante tendrá derecho a apelar la decisión administrativa al Consejo Gubernamental del Distrito dentro de los

15 días siguientes a la fecha de notificación de la decisión. El Consejo Gubernamental del Distrito contará con 45 días para actuar sobre la apelación. La falta de actuación del Consejo dentro de los siguientes 45 días otorgados indicará la aprobación de la decisión administrativa tomada. El demandante tendrá derecho a someter una apelación por escrito a la Oficina del Canciller dentro de los 30 días siguientes de que el Consejo Gubernamental haya emitido la decisión final del Distrito, o, permitirá que la decisión administrativa sea final conforme a lo anterior. El Canciller tendrá la autoridad de aceptar o rechazar cualquier petición semejante en la revisión de casos de discriminación laboral.

Preguntas, Quejas a Base de Incapacidad

Las preguntas sobre el acceso, trato, o empleo de personas discapacitadas deberán ser dirigidas al Vicepresidenta de Servicios Estudiantiles/Coordinador de ADA de Los Medanos College; 2700 East Leland Rd., Pittsburg, CA 94565, (925) 473-7421, o, al TDD (925) 439-5709.

FEDERAL WORK STUDY STUDENTS

EARN and LEARN while working on campus



Benefits of the federal work study program:

- ★ Flexible schedules available that work around your class schedule
- ★ Marketable skills/added work experience
- ★ Ongoing professional development and support
- ★ Competitive pay range

Contact your **Financial Aid Coordinator** or **Federal Work Study Coordinator** for more information



College Parking Information

Parking All vehicles parked on the campus, whether in a parking lot, dirt lot, or perimeter road (Miwok Way and Los Medanos Drive) must have a valid parking permit. Be aware that there are specified student parking areas and faculty/staff parking areas. Students who park in faculty/staff spaces will be ticketed.

Fees Students may purchase a parking permit, valid for one semester. The cost is \$48.00 for automobiles and \$30.00 for motorcycles or mopeds. Full-term permits can now be purchased online through InSite. Students may now purchase a mid-term parking permit beginning March 19, 2018. The cost for automobiles is \$25.00 and \$15.00 for motorcycles or mopeds. Permits are no longer available for purchase on campus.

Upon payment, you will be emailed a 15-day temporary parking permit than can be printed out and used until the permanent parking permit arrives at your home in two to three business days. Your permit is valid at any campus parking lot in the district. Daily parking permits may be purchased from the black ticket vending machines for \$3.00. These machines are located in Lot A, Lot 1A, Lot B, Lot C and the perimeter road adjacent to the softball fields.

CCPG (formerly BOGFW) recipients may qualify for discounted parking if the waiver is applied before purchasing parking.

Disabled Parking Special parking spaces are designated for disabled persons who have a DMV placard. Disabled persons with permits may park in any legal space on campus. The van accessible spaces are for wheelchair persons only.

Enforcement A valid parking permit will be required 24 hours a day, 7 days a week including holidays. All parking and traffic regulations will be enforced 24 hours a day, 7 days a week including holidays..

Payment of fines Citations for parking violations are issued by the Campus Police. Payment of fines must be made to:

Citation Processing Center

IPARQ
P.O. Box 60309
San Diego, CA 92166

For questions, call (510) 423-7275

REMEMBER: TO AVOID A CITATION YOUR PERMIT MUST BE VISIBLE AT ALL TIMES WHILE PARKED ON CAMPUS.

For more information, please visit our website:

www.losmedanos.thepermitstore.com

Transportation to get you here.

Buses LMC is served by frequent Tri Delta Transit buses to Pittsburg/Bay Point BART and local communities. The general public (ages 6-64) cash fare is currently \$2.00 (single ride, no transfers) or \$3.75 for a day pass. Bus routes 380, 381, 387, 388, 391 serve LMC weekdays and routes 392, 393 & 394 serve LMC on weekends and holidays.*

Bus service to the Brentwood Center can be accessed by route 391 and 393 from Pittsburg, Antioch, and Oakley.

The Tri Delta Transit web site also offers a "Trip Planner" link where you can enter origin and destination and the web site will provide you with transit options and times. For more information, please visit: www.trideltatransit.com. Or call Tri Delta Transit at: (925) 754-6622.

*In addition, Tri Delta Transit offers discounts monthly and value passes.

www.trideltatransit.com

BART Tri Delta Transit Buses connect LMC to BART, which services Pittsburg, Concord, Pleasant Hill, Walnut Creek and other cities throughout the Bay Area. For specific Tri Delta Transit buses that service Los Medanos College, please see "Buses", or call BART at: (925) 676-2278 (BART).

Carpooling A healthier and faster commute option with 9 miles of High Occupancy Vehicle lanes on Highway 4, between Port Chicago Highway and Railroad Avenue.

Bicycle Secure bike racks are available at various locations on campus. Bikes can be transported by BART or bus as well. See the above numbers for more information.

The De Anza bike trail intersects the south end of the LMC Pittsburg Campus. The bike trail can be accessed from the west of campus at Leland, Crestview Drive, Railroad Avenue, Harbor Street, and Loveridge Road. The bike trail can be accessed from the east at Somersville Road, Delta Fair Boulevard, Gentry Town Drive and James Donlon Boulevard.

The Marsh Creek bike trail borders the northwest side of the Brentwood Center. The bike trail can be accessed by following the parking lot behind the campus and from Sand Creek Road.

Free trail maps: www.511contracosta.org or (925) 969-0841.

511 Contra Costa 511 Contra Costa provides commuter services and programs to eligible college students traveling to, through, or from Contra Costa County. Programs are available to students who are willing to carpool, ride transit, bike, and walk instead of driving alone to campus.

511 Contra Costa commute programs are provided free of charge to residents, college commuters, and employers in Contra Costa County on a first-come, first-serve basis while funding is available. Funds for these programs are provided by the Bay Area Air Quality Management District's Transportation Fund for Clean Air and the Contra Costa Transportation Authority.

Visit www.511contracosta.org for more information or by calling (925) 969-0841.

Notes

Lined writing area consisting of numerous horizontal lines for text entry.

Crime Awareness

Criminal activity can be greatly reduced by preventative efforts. Take steps to protect your possessions and discourage theft.

Federal law requires that crime prevention techniques and statistics be reported annually to the campus community. This report meets all requirements as set forth in the Crime Awareness and Campus Security Act of 1991. This data was prepared not only to comply with the law, but to help keep our students, faculty and staff safe and secure, and to provide an environment supportive of teaching and learning.

You are encouraged, as a member of the campus community, to report suspicious circumstances or any criminal acts committed on district properties.

The District, through its Police Services Department, is committed to fully investigate reports of criminal acts occurring on district properties.

At Los Medanos College, crimes may be reported by calling Police Services at **(925) 473-7332** or by visiting the Police Services Department in the Campus Safety Building at the front of the Pittsburg Campus.

In addition to police services, the College District provides:

Escort service upon request:

Call Police Services at **(925) 473-7332** for an escort between offices or to a parking lot.

First Aid-CPR service

Police officers and some police aides are trained in CPR and First Aid. Call **(925) 473-7332** or, in an emergency, **(925) 473-7333**.

Safety and crime prevention pamphlets

Available at the Police Services offices.

Parking permits

A parking permit is required when parked on campus (except holidays and weekends). To avoid a ticket, the parking permit must be visible at all times.

Police services office hours:

Monday – Thursday
7:30am – 10:30pm

Friday
7:30am – 5:30pm

Saturday
7:30am – 3:30pm

To contact an officer after business hours, call the Sheriff's Department at (925) 646-2441.

PITTSBURG CAMPUS CRIME STATISTICS

Crime Reported	2016		2017		2018	
	AO*	HO**	AO*	HO**	AO*	HO**
Murder & Non-negligent Manslaughter	0	0	0	0	0	0
Negligent Manslaughter	0	0	0	0	0	0
Forcible Sex Offenses	0	0	0	0	0	0
Robbery	1	0	3	0	1	0
Aggravated Assault	1	0	1	0	1	0
Burglary	7	0	12	0	3	0
Theft	57	0	52	0	16	0
Motor Vehicle Theft	12	0	9	0	0	0
Arson	0	0	0	0	0	0
Domestic Violence	0	-	0	-	0	0
Stalking	-	-	1	-	0	0
TOTALS	78	0	78	0	21	0

BRENTWOOD CENTER CRIME STATISTICS

Crime Reported	2016		2017		2018	
	AO*	HO**	AO*	HO**	AO*	HO**
Murder & Non-negligent Manslaughter	0	0	0	0	0	0
Negligent Manslaughter	0	0	0	0	0	0
Forcible Sex Offenses	0	0	0	0	0	0
Robbery	0	0	0	0	0	0
Aggravated Assault	0	0	0	0	0	0
Burglary	0	0	0	0	0	0
Theft	0	0	0	0	0	0
Motor Vehicle Theft	0	0	0	0	0	0
Arson	0	0	0	0	0	0
Domestic Violence	-	-	-	-	0	0
Stalking	-	-	-	-	0	0
TOTALS	0	0	0	0	0	0

*AO - Actual Offenses

**HO - Hate Offenses - Number of crimes (homicide, rape, assault) that manifest evidence of prejudice based on race, religion, sexual orientation or ethnicity.

NOTE - Domestic violence and stalking - STATS were mandated after 2012

FOR EMERGENCIES ONLY

Call ext. 3-7333 or 9-911 from campus phones.

Note: to secure an outside line, necessary for dialing 911, you must first dial 9 on a campus phone.

DIAL 911 FROM OTHER PHONES

(Pay phones DO NOT charge for 911 calls)

DISTRICT-WIDE MISCELLANEOUS ARRESTS

Crime	2016	2017	2018
Weapons	1	1	0
Drugs	0	0	1
Liquor Laws	0	0	0

Los Medanos College Campus Directory

PITTSBURG CAMPUS..... (925) 439-2181

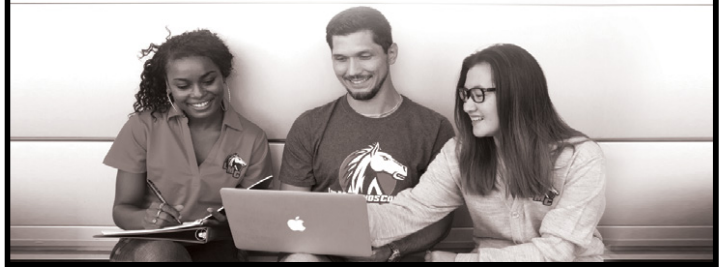
TDD (Hearing impaired phone)..... (925) 439-5709

BRENTWOOD CENTER..... (925) 513-1625



DEPARTMENT	LOCATION	PHONE	DEPARTMENT	PHONE
Admissions & Records Office	SS3-301	473-7500	INSTRUCTIONAL LABS	
Assessment Center	SS3-314	473-7431	Appliance	473-7737
Athletic Programs		473-7605	Art	473-7819/7826
Bookstore	CC3-810	473-7543 or 439-2056	Automotive	473-7741
Brentwood Center		513-1625	Biology	473-7695
CalWORKs/CARE Office	SS4-417	473-7482	Business	473-7787
Cashier's and Payment Office	SS3-308	473-7502	Computer	473-7788
Center for Academic Support	CO-300	473-7590	English	473-7870
Child Study Center		473-7640	ETEC	473-7726
Cooperative Work Experience Education & Workforce Development Programs	CC3-371	473-7415/ 473-7417	Journalism	473-7827/473-7830
Counseling Appointments	SS4-400	473-7449	Math Tutorial/Math Lab	VM 473-7665
Disabled Students Programs & Services (DSPS) • Learning/Physical (TDD Phone Hearing impaired)	SS3-321	473-7471 439-5709	MIDI (Music)	473-7813
Extended Opportunity Programs & Services (EOPS)	SS4-414	473-7480/ 473-7483	Physical Science	473-7700
Financial Aid	SS3-309	473-7525	OFFICE OF INSTRUCTION	
Foundation Office	SS3-302	473-7315	Dean of Liberal Arts	473-7408/473-7409
Library Services	L-117	473-7570/ 473-7575	Dean of Math & Sciences	473-7408/473-7409
Lost and Found/Police Services	CC1-132	473-7332	Dean of Career Technical Education & Social Sciences	473-7408/473-7409
Music and Recording Arts	MU3-712	473-7805	Vice President of Instruction	473-7319
New Student Workshops	SS3-320	473-7434	Individual instructors may be contacted at their campus phone extensions.	
Police Services/Lost and Found Emergency Line	CC1-132	473-7332 473-3333	OFFICE OF STUDENT SERVICES	
Scholarship Information	SS3-309	473-7518	Dean of Counseling & Student Support	473-7426
Student Government/Activities	GA Building	473-7552	Dean of Student Success	473-7424
Student Outreach	SS3-320	473-7430	Vice President of Student Services	473-7424
Student Retention & Support	SS3-419	473-7483		
Transfer & Career Services	SS4-435	473-7444 or 473-7443		
• Employment Center On-Campus Job Placement		473-7515		
Veterans Benefits	SS3-301	473-7496		
Veterans Resource Center	CC-821	473-7511		
Welcome Center	SS3-331	473-7439		
Welcome Desk	SS3-320	473-7434		

Live in LMC apparel



LMC BOOKSTORE (925) 439-2056

BEST PRICES. QUALITY SERVICE

FOR ALL YOUR CAMPUS NEEDS

New, used and rental textbook, college catalog & schedule, calculators, recorders, electronics & batteries, gifts, cards, snacks, school supplies and LMC clothing

Regular Store Hours

Monday-Thursday 7:45am - 7:00pm
Friday 7:45am - 3:00pm

Summer Store Hours

Monday-Thursday 7:45am - 5:00pm
Friday Closed

We accept cash, Visa and Mastercard. Personal checks are not accepted. ATM located in bookstore.

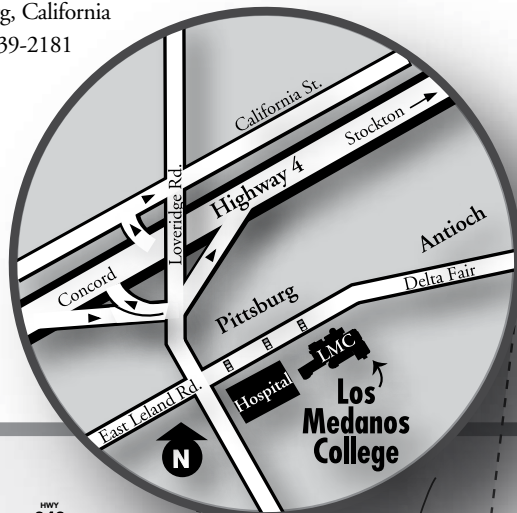


NOTE: These are NEW phone numbers
Visit www.losmedanos.edu/directory for entire directory.

Directions to Los Medanos College

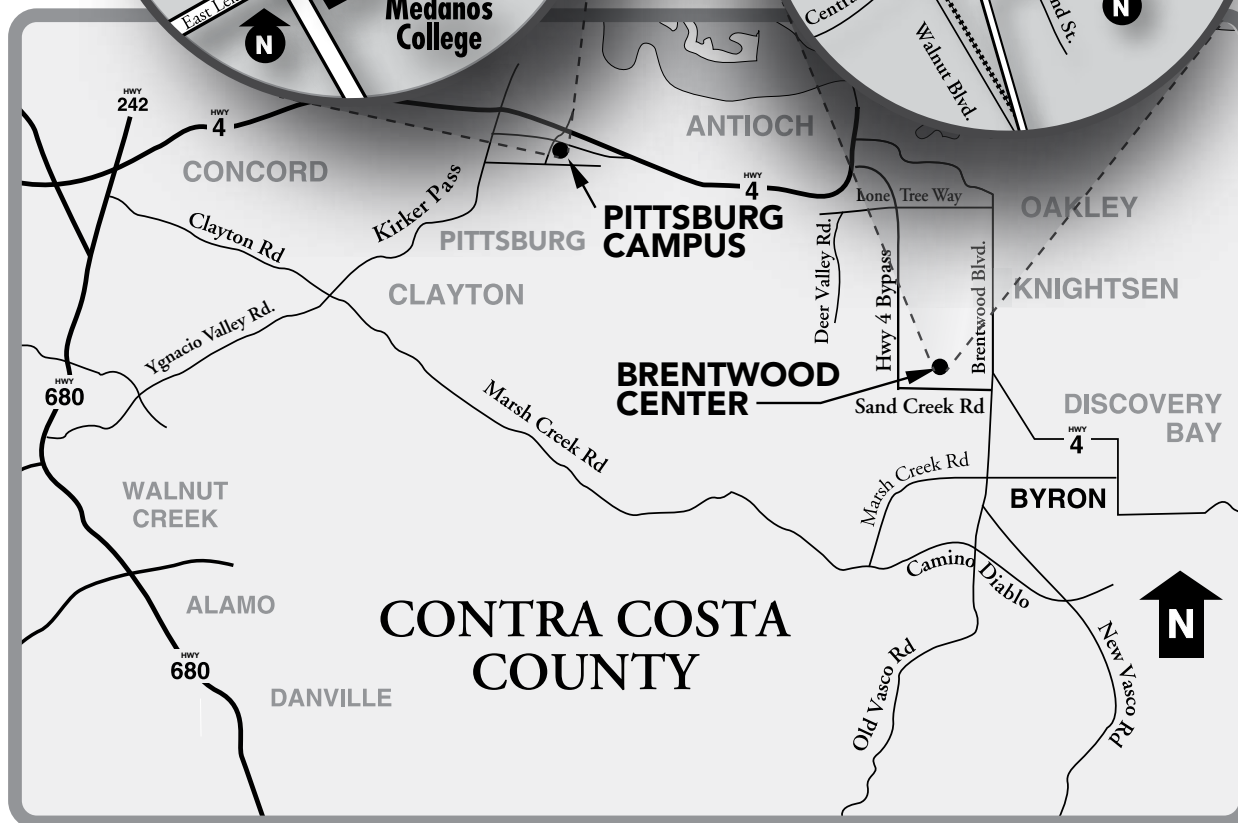
PITTSBURG CAMPUS

2700 East Leland Road
Pittsburg, California
(925) 439-2181



BRENTWOOD CENTER

101A Sand Creek Road
Brentwood, California
(925) 513-1625



VISIT US
www.losmedanos.edu



Use this QR code to access the maps link using your smart phone.

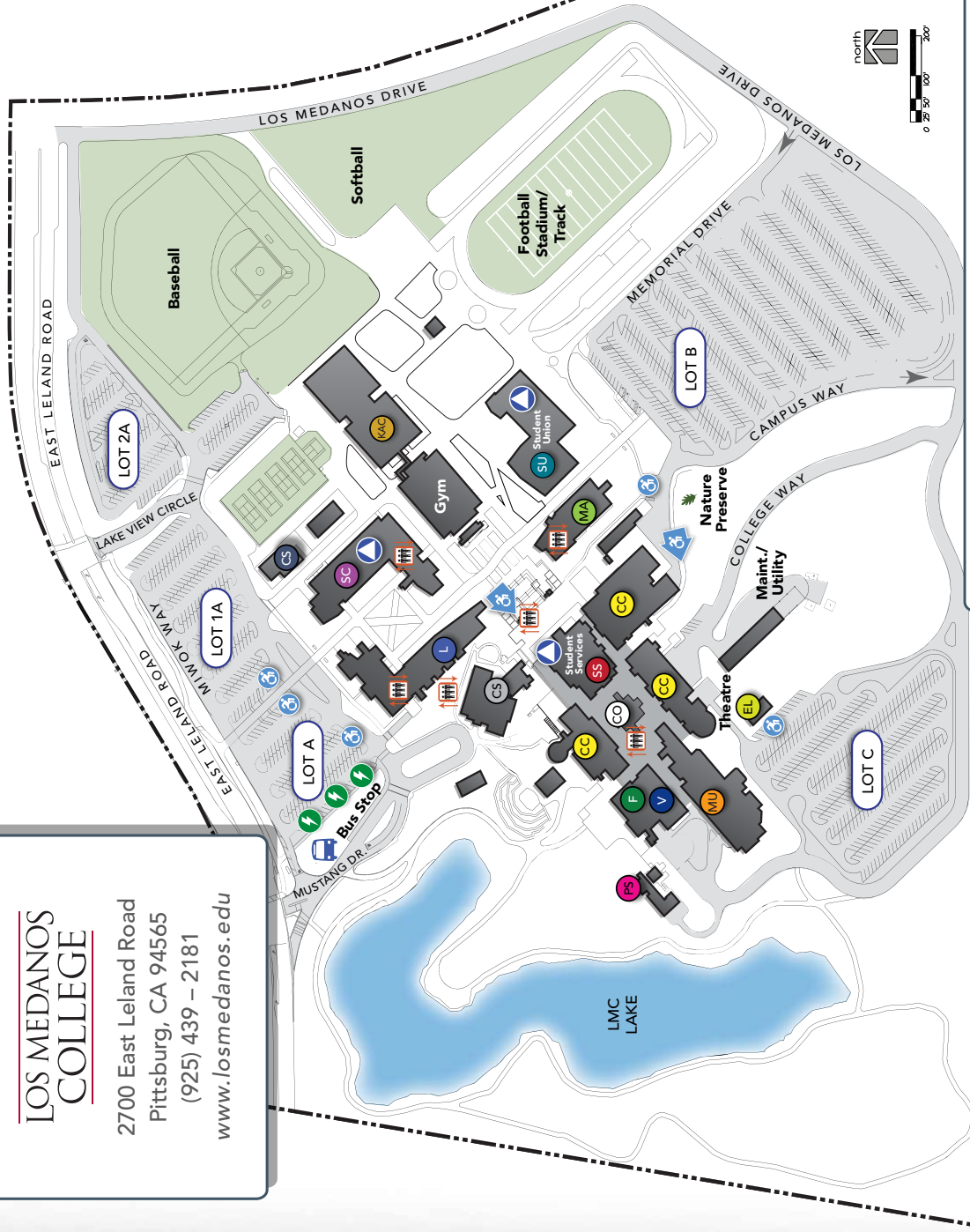
Campus Overview

**LOS MEDANOS
COLLEGE**

2700 East Leland Road
Pittsburg, CA 94565
(925) 439 – 2181
www.losmedanos.edu

Building Legend

- CC** College Complex
- CO** CORE
 - Business Services
 - Center for Academic Support
 - Equity & Inclusion
- CS** Child Study Center
- CS** Campus Safety Police Services
- EL** ETEC Lab
- F** Cafeteria
- KAC** Kinesiology & Athletics Complex
- L** Library Community Room
- MA** Math
- MU** Music Recital Hall
- PS** Classrooms
- SC** Science MESA Center
- SS** Student Services
 - Admissions/Cashier
 - Assessment Services
 - Counseling Services
 - DSFS
 - EOPS, CARE, CAWORKS
 - Financial Aid/Scholarships
 - Information/Welcome Center
 - LMC Foundation
 - Office of Instruction
 - President's Office
 - Transfer & Career Services
- SU** Student Union
 - Bookstore
 - Conference Center
 - Food Pantry
 - Honors Program
 - International Students Program
 - Lainx Empowerment Center
 - Reflection Room
 - Student Lounge
 - Student Center
 - Unoja Scholars Program
- V** Veterans Resource Center



- E-Charging Stations
- All Gender Restrooms
- Accessible Parking
- Accessible Entrance
- Bus Stop
- Elevator

Smoking restricted to parking lot areas.

Building the

FUTURE OF SUCCESS



The NEW LMC Brentwood Center

**OPENING
FALL
2020!**



More than double the size of the current Brentwood facility!

- 14 General Classrooms
- 20 Offices for Faculty & Staff
- Bookstore
- 2 Computer Lab Classrooms
- Admissions & Records Reception
- Library Resources
- 1 Open Computer Lab
- Financial Aid
- "Linger-and-Learn" Student Commons
- 4 Science Labs
- DSPS Testing Center
- English & Math Tutoring Labs

**LOS MEDANOS
COLLEGE**

Follow along with our progress
on this project @
www.losmedanos.edu/construction

